

IN THIS
ISSUE

A Lesson for the Great

BROADCAST WEEKLY

December 16th to 22nd



Cheri McKay, contralto, sings with the Merry Macs, male trio, heard over the NBC network from Chicago.

10¢

65 70 75

LEADING RADIO PROGRAM OF THE PACIFIC COAST

CHAIN PROGRAMS CLASSIFIED

PACIFIC STANDARD TIME

COMEDIANS

Allen, Fred, Wednesday, 9 p.m. NBC
 Baker, Phil, Friday, 6:30 p.m. NBC
 Benny, Jack, Sunday, 8:30 p.m. NBC
 Cook, Joe, Monday, 6:30 p.m. NBC
 Penner, Joe, Sunday, 4:30 p.m. NBC
 Wynn, Ed, Tuesday, 6:30 p.m. NBC

DRAMAS

Bible Stories, Sunday, 12 noon KGO
 Death Valley Days, Tuesday, 9:30 p.m. NBC
 Drama Hour, Monday, 8:30 p.m. KGO
 First Nighter, Friday, 7 p.m. NBC
 Grand Hotel, Sunday, 3:30 p.m. NBC
 Ladies Laugh Last, Saturday, 7:30 p.m. NBC
 Lux Radio Theatre, Sunday, 11:30 a.m. NBC
 Mary Pickford Stock Co., Wed. 5 p.m. NBC
 Memory Lane, Monday, 7:30 p.m. NBC
 One Man's Family, Wed., 7:30 p.m. KGO
 Radio Guild, Monday, 12 noon NBC
 Sunday Morning Special, Sunday, 9 a.m. NBC
 True Story Court, Friday, 8:30 p.m. CBS
 Twenty Thousand Years in Sing Sing, Wednesday,
 6 p.m. NBC
 Winning the West, Thursday, 9:15 p.m. NBC

EDUCATIONAL PROGRAMS

Commonwealth Club Luncheon, Fri., 12:45 p.m. KGO
 Education Today, Saturday, 6:45 p.m. KGO
 Curtis Institute, Wed., 1:15 p.m. CBS
 Hill, Edwin C., Mon., Wed., Fri., 8:15 p.m. CBS
 Hyde, Henry M., Sunday, 6 p.m. KGO
 Religion in the News, Saturday, 4 p.m. KGO
 Stanford University, Monday, 8 p.m. KGO
 The New World, Monday, 9:30 a.m. NBC
 University Explorer, Tuesday, 9:30 p.m. *KFRC
 Visiting America's "Little House," Monday,
 Tuesday, Thursday, 1:00 p.m. CBS
 You and Your Government, Tues., 4:30 p.m. NBC

POPULAR PROGRAMS

Adventures of Grace, Wednesday, 6:30 p.m. CBS
 American Album of Familiar Music, Sunday,
 6:30 p.m. NBC
 Atwater-Kent, Monday, 5:30 p.m. CBS
 Bernie, Ben, Tuesday, 9 p.m. NBC
 Boswell Sisters, Tuesday, 6 p.m. CBS
 Chesterfield Program, Mon., Wed., Sat., 6 p.m. CBS
 Crosby, Bing, Tuesday, 6 p.m. CBS
 Feminine Fancies, Mon. to Fri., 3 p.m. *KFRC
 Hollywood Hotel, Friday, 8:30 p.m. CBS
 Marshall's Varieties, Everett, Wed., 5:30 p.m. CBS
 Manhattan Merry-Go-Round, Sunday, 6 p.m. NBC
 March of Time, Friday, 6 p.m. CBS
 Personal Closeups, Interview by Gypsy, Sunday,
 6:15 p.m. KGO
 Sinclair Greater Minstrels, Monday, 6 p.m. NBC
 Treasures of Time, Wednesday, 8:45 p.m. CBS
 Voice of Experience; Mon. to Fri., 9 a.m.; Wed.
 8:30 p.m. CBS
 Voice of Firestone, Monday, 8:30 p.m. NBC
 Winchell, Walter, Sunday, 8:15 p.m. NBC

SKITS

Adventures of Jimmy Allen, Monday to Friday,
 inclusive, 6:45 p.m. KGO
 Amos 'n' Andy, Mon. to Fri., inclusive, 8 p.m. NBC
 Betty and Bob, Monday to Friday, 1 p.m. NBC
 Bachelor, Billy, Monday to Friday, inclusive,
 5:15 p.m. *KFRC
 Myrt and Marge, Monday to Friday, inclusive,
 8 p.m. CBS
 Orphan Annie, Elec. Transcription, Mon. to Fri.,
 inclusive 5:45 p.m. KGO
 Oxydol's Own Ma Perkins, Monday to Friday,
 1:30 p.m. NBC
 Vic and Sade, Mon. to Fri., inclusive, 11:45 a.m. NBC

SYMPHONY ORCHESTRAS

Ford Symphony Orch., Sunday, 5 p.m. CBS
 N. Y. Philharmonic Orchestra, Sunday, 12 noon CBS
 Radio City Music Hall, Sunday, 9:30 a.m. NBC
 Standard Symphony, Thursday, 8:15 p.m. NBC

VARIETY PROGRAMS

Armour Program, Friday, 6:30 p.m. NBC
 Blue Monday Jamboree, Monday, 8:30 p.m. *KFRC
 Carefree Carnival, Monday, 5:30 p.m. NBC
 Captain Henry's Showboat, Thursday, 6 p.m. NBC
 Chase & Sanborn Opera Guild, Sunday 5 p.m. NBC
 Colgate House Party, Monday, 6:30 p.m. NBC
 Crosscuts Log o' the Day, Mon., Wed., Thurs.,
 Fri. and Sat., 8:15 a.m. (Tues. 11 a.m.) KGO
 Fleischmann Hour, Thursday, 5 p.m. NBC
 Gibson Family, Saturday, 6:30 p.m. NBC
 Happy-Go-Lucky Hour, Monday to Friday, in-
 clusive, 2 p.m. *KFRC
 Hall of Fame, Sunday, 7 p.m. NBC
 Hi-Jinks, Sunday, 9 p.m. CBS
 National Barn Dance, Saturday, 8 p.m. NBC
 Palmolive Beauty Box, Tuesday, 7 p.m. NBC
 Pearce, Al, and Gang, Mon. to Fri., 2 p.m. NBC
 Roxy Revue, Saturday, 5 p.m. CBS
 Shell Show, Monday, 9 p.m. NBC
 S. & W. Merrymakers, Sunday, 7:30 p.m. *KFRC
 Town Hall Tonight, Wednesday, 9 p.m. NBC
 Waring's Pennsylvanians, Thurs., 6:30 p.m. CBS
 Whiteman, Paul, Thursday, 7 p.m. NBC

STATION DIRECTORY

• NBC Network Stations

Station	Location	Meters	Kcs.
KECA	—Los Angeles	209.7	1430
KEX	—Portland, Ore.	254.1	1180
KFI	—Los Angeles	468.5	640
KFSD	—San Diego	499.7	600
KGO	—Oakland - San Francisco	379.5	790
KGW	—Portland, Ore.	483.6	620
KHQ	—Spokane, Wash.	508.2	590
KJR	—Seattle, Wash.	309.1	970
KOA	—Denver, Colo.	361.2	830
KOMO	—Seattle, Wash.	325.9	920
KPO	—San Francisco	449.9	680
KYA	—San Francisco	243.8	1230

* CBS Network Stations

KFRC	—San Francisco	491.5	610
KGB	—San Diego, Calif.	225.4	1330
KHJ	—Los Angeles	333.1	900
KOIN	—Portland, Ore.	319.0	940
KOL	—Seattle, Wash.	236.1	1270
KSL	—Salt Lake City	265.3	1130
KVI	—Tacoma, Wash.	526	570

Independent Stations

KFOX	—Long Beach, Calif.	239.9	1250
KFWB	—Hollywood, Calif.	315.6	950
KGDM	—Stockton, Calif.	272.6	1100
KGGC	—San Francisco	211.1	1420
KJBS	—San Francisco	280.2	1070
KLX	—Oakland, Calif.	340.7	880
KNX	—Los Angeles	285.5	1050
KQW	—San Jose, Calif.	296.6	1010
KROW	—Oakland, Calif.	322.4	930
KTAB	—Oakland-San Francisco	535.4	560

BROADCAST WEEKLY

(FORMERLY RADIOCAST WEEKLY - - ESTABLISHED 1922 AS BROADCAST PROGRAM)

Published weekly by PACIFIC PERIODICAL CORPORATION

Publication Office
1114 Mission Street
SAN FRANCISCO

Telephone
UNderhill 7676

10 Cents the Copy from All
Newsdealers

\$1.50 Per Year by Subscription



O. J. NUSSER
Editor and Manager

Entered as second-class matter,
March 25, 1923, by the Postoffice,
San Francisco, California, under
Act of March 3, 1879.

Vol. XIII

San Francisco, California, December 15, 1934

No. 49

A Lesson for the Great

A CELEBRITY of the stage, screen and radio has just discovered what a teacher means when she tells a pupil to "come prepared." This particular star has been forced to postpone his return to radio because he went on the air recently without proper preparation—and out the window flew one of the juiciest commercials in recent years. It is more than just tough luck for him—it is a warning and a lesson to all stage and film stars who dare to face the microphone with anything hanging in the balance.

There are a number of lessons to the great in this episode. In the first place, stars of any great magnitude are rather foolish to do so-called "impromptu" guest appearances. Radio is such a tense taskmaster that only one's very best is acceptable—and anything short of the best is generally tragic. The microphone is not to be faced these days without hours of preparation. No longer can a star stroll up to it, say "hello folks" and drop a few alleged pearls of wisdom before resuming his seat. No less a luminary than Jane Cowl, recently appearing on the Lux Theater of the Air, demanded two full weeks of rehearsal—and got it because the sponsor of the program saw the wisdom of such a request.

Competition is terrific in radio. Let a star do a bad performance—and it is just too bad. You cannot be mediocre on radio these days. Certain of the "big name" comics have found just how much harm one weak script does

on an entire series—and some of them are off the air because they didn't heed the warning. The public picks its own hits, and those who want to stay on top had better realize they must do it with "top" material.

ONE of the holiday broadcasts worthy of editorial mention will be the Christmas Day program sponsored by the Nash Motors Company over Columbia Broadcasting System from 11:30 a. m. to 2:15 p. m., and on New Year's Day. It will be one of the longest commercial broadcasts in the history of radio.

Both of the Nash shows will be of the all-star variety and will present entertainment from at least three widely separated points—New York, Chicago and Hollywood. While all the identity of luminaries to appear on the program are not announced, it is known that Lionel Barrymore, who is far from in love with radio, has been lured into the picture with the juicy part of "Scrooge," the unamiable old gentleman in Dickens' "A Christmas Carol."

The Dickens classic is regarded as particularly appropriate for a Christmas broadcast, and it is said that Barrymore, who attained his greatest fame in playing rôles of elderly men, is keen for this impersonation. However, the Barrymore portrayal will require only a fraction of the entire broadcast.

The broadcast will go over nearly a hundred stations.

MICROPHONE GOSSIP



• • • Even an opera and radio star lives in fear of her hairdresser. Ask Gladys Swarthout, star of the Palmolive Beauty Box Theater. Miss Swarthout has her hair done every Wednesday—and is almost always late for her appointment. Dashing to the beauty salon, at the last moment, she is always worried about what Monsieur Somebody is going to say. Incidentally, here's something interesting about Miss Swarthout's coiffure—one nobody has ever seen duplicated. She worked it out herself. Her hair is bobbed and curled in such a way as to encircle her head like a halo.

• • • John Eugene Hasty, one of radio's most prolific writers, is back at his desk at the MacGregor and Sollie Broadcasting System in San Francisco following a siege of illness. Hasty, who is production manager for the system, was recently confined to a hospital for a short time. He's back at his desk now, though, authoring *Eb* and *Zeb*, *Hi-Hilarities*, the *Hawk*, the *Man About Town* and nearly a dozen other features which are released over the stations affiliated with the MacGregor and Sollie System.

• • • Al and Cal Pearce entertained Leo Tyson, the Gang's manager, and his wife; Phil Hanna and wife; Monroe Upton and wife, and Jack Dorrence and his mother at Palm Springs over a recent week-end.

In a foot-race between Al, Jack Dorrence, Phil Hanna and Monroe Upton, the big MC carried off the honors. Al admits now that in High School he used to run the mile in 4.44.

• • • Maria Peralta, songstress on the Packard Fiesta, and possessor of one of radio's finest radio voices, believes in having more than one string to her bow. Although a professional singer of wide recognition, she holds down an exacting job with the county tax assessor's office.

• • • Alyss Luthi, KYA actress, who has portrayed many different characters over that station, her current appearance being as Yolando in "Joan of Arc" was a little late to rehearsal the other day. Her alibi was that she had been given a surprise "shower" which was the first time many knew that this popular girl was to be married this December.

• • • KYA's dramatic group "The Radio Players" heard frequently over that station have a peculiarity of their own. Every member of the group is young, ranging from thirteen to twenty-nine years, yet they portray

characters of all ages and types to listening audiences. It is infrequent that a radio talent list is made entirely of younger people.

• • • Jack Carter, KNX's "Boy from London," is a happy man now. He appeared at the studios this week, walking with the aid of only an ordinary cane, having dispensed with the crutches he has been using for many weeks. He reports that he soon expects to be walking as good as ever, his knee injury being well on the road to complete recovery.

• • • College, junior college, and high school sport celebrities are presented to the radio fans at the weekly Golden Gate Junior College "Sport Broadcast," with Milton Burnham, publicity director, acting as the master of ceremonies for these programs every Friday night from 8 to 8:15 o'clock over station KTAB.

• • • Roxy (S. L. Rothafel) is returning to the theater. The veteran showman has been signed by Warners to direct the huge and renamed Roxy-Mastbaum in Philadelphia, believed to be the third largest house in the country, with its seating capacity of 5,000. His new venture will require him to commute between the Quaker City and New York, the scene of his Saturday night broadcasts over CBS. Roxy has not yet revealed his new production ideas, but observers believe that his Philadelphia activities will constitute another important chapter in a career that has made theatrical history.

• • • California Melodies, that dandy show piped from KHJ, Los Angeles, under direction of Raymond Paige, was first produced in the KFRC studios in San Francisco.

• • • The foundation for the new KNX self-supporting, single-tower radiator, is taking definite shape out at the transmitter site in Sherman Oaks. The mighty mast, when completed will stand nearly 540 feet high, more than twice the height of the present lofty twin towers.

It will be the tallest self-supporting tower for broadcasting in the country. KOL, Seattle, recently installed a 490-foot tower.

• • • Nowran McGill, KGGC manager, is the latest convert to the realm of short wave, and when not on the job, can usually be found in front of the loudspeaker listening to Buenos Aires. So ardent a fan has he become that he has started Spanish lessons with Humverto Rivas, maestro of the Spanish program, so that he can identify the great number of Spanish-speaking announcers on the short wave spectrum.

• • • The Arline Francis-Hazel Warner feud on the Al Pearce program is all in fun: The girls are really the best of friends and always ride together when the Gang is journeying to theaters.

• • • Travel programs written by Grace Sanderson Michie (formerly with KGO), and electrically transcribed by MacGregor and Sollie, are to be used on the Matson boats plying their colorful way between San Francisco and New Zealand, describing the beauty of the South Seas, Australia, and New Zealand.

Mrs. Michie is starting a new series of twenty-six world travel programs for MacGregor and Sollie. John Eugene Hasty will produce them.

• • • Jack Smart and Minerva Pious are the heavyweight and lightweight, respectively, of Fred Allen's entertaining troupe of players. Smart stands 5 feet 10 inches and weighs 230 pounds while Miss Pious is under five feet tall and weighs all of ninety-eight pounds.

• • • Eddie Holden and Reginald Sharland, who are "Frank Watanabe and the Hon. Archie" over KNX, turned grim stalkers of prey last week-end and as a result returned to the studios with their quota of ducks. Here and there the pair were seen with a handful of birds to prove their success, and a check of the situation reveals they actually bagged the fowl themselves.

• • • Pat Padgett and Pic Malone (Molasses 'n' January) are celebrating their sixth anniversary as a team in bang-up fashion. With their pockets literally bulging with telegrams of congratulations, the burnt-cork comics of Captain Henry's Maxwell House Showboat dashed from the NBC studios after their broadcast and pushed off for wildest Maine for a week of hunting. After all, the boys said, six years together is a record to shoot at!

• • • Kate Smith has cornered the Moffett market—two little Miss Moffetts now heard regularly on her Matinee Hour are Marjorie, monologist, and Adelaide, deb singer—no relation.

• • • If there were a smallpox sign hanging on the door of C Studio in NBC's San Francisco quarters every Monday afternoon, it wouldn't be more meticulously avoided by singers, announcers and musicians. They'll walk blocks, any direction, to avoid it, for the Old Eavesdropper of Studio Chatter lurks within, and his habit of darting out upon some hapless artist and dragging him before the microphone for an impromptu interview has become famous.

Clinton Twiss, the voice of the Old Eavesdropper, and Ken Carney, NBC producer, who writes Studio Chatter, conceived the

idea of the unrehearsed interview as a means of adding spontaneity to the program. Now they have as much fun as listeners do over the manner in which their victims react to the *ad libitum* queries fired at them.

• • • Paramount Pictures has captured one of the most beautiful and talented women of opera and radio—Gladys Swarthout. The leading lady of the Palmolive Beauty Box Theatre signed a picture contract this week. She will go to Hollywood next spring, at the close of the opera season.

For purposes of the screen tests, Miss Swarthout was persuaded to tweeze her eyebrows—something she had never done before. One company that negotiated with her requested that she change her coiffure, on the theory that it was too severe. Miss Swarthout refused. Paramount agrees with her that the coiffure is highly individual and should be left just as it is.

• • • Perhaps in the future a copy of James Melton's cook book will stand side by side with other great kitchen authorities! Jimmy, NBC tenor star, has over 150 recipes for making "short'nin' bread," sent to him by radio fans praising his inimitable interpretation of the song of the same name. Each recipe claims to be the only authentic one. A publisher, hearing of Melton's prize collection, wants to publish it in book form, illustrated with a series of cartoons.



EMIL J. POLAK

NBC MUSICAL COUNSELOR

Friday—9 p. m. — KPO and
Network

Polak's Mixed Quartet and Orchestra
in CASWELL CONCERT

128th Program

ARRANGED AND DIRECTED BY

POLAK

NEWS *and* COMMENT

Two outstanding radio presentations, Eddie Cantor and "The Hall of Fame," will become highlights of the nation-wide Columbia network's Sunday evening program schedule early in 1935, filling the 5:00 to 6:00 p.m., P.S.T., period under the same sponsorship.

"The Hall of Fame," a popular network feature for the past year, will become a weekly CBS attraction starting Sunday, January 6, from 5:00 to 5:30 p.m., P.S.T. Eddie Cantor will start his series on Sunday, February 3, at that same time, when "The Hall of Fame" will move to the 5:30 to 6:00 p.m., P.S.T., period. The Lehn and Fink Products Company will sponsor both programs, presenting "The Hall of Fame" in the interests of Lysol and Hind's Honey and Almond Cream, and Cantor in behalf of Pebecco Toothpaste.

Rubinoff, violinist and conductor, will be featured with Cantor when he returns to the air. Rubinoff and his violin have been associated with the popular comedian in all of his radio programs for the past three years. Full details of both programs will be announced later.

Cantor, with his wife and his three oldest daughters, sailed for Europe Sunday, December 2, for the comedian's first vacation in ten years. They will spend six or seven weeks abroad, visiting England, France and Italy.

Ψ

John Wolfe and Ned Tollinger, patter and harmony team known on the air as John and Ned, terminated their nine years' partnership on December 1, and Wolfe and Ted Maxwell (Pa Smithers of Memory Lane) are leaving for the NBC studios in Chicago. They will join Bobbe Deane, who is Mrs. Maxwell in private life, and the three will present a new radio skit which will combine dialogue and music.

Ned Tollinger, who is the master of ceremonies of the Carefree Carnival, will remain with the Western Division to pilot the big variety show on its new schedule.

John and Ned were a pioneer radio team. They joined forces and voices in their native town of Council Bluffs, Iowa, almost a decade ago, and received national publicity when they traveled from coast to coast as representatives of an oil company before the days of networks. They were noted for the perfect blend of their voices and the happy informality of their programs.

Maxwell has been a member of the San Francisco NBC staff since the Western Division was organized. His early microphone work included the rôle of Jack in the Jack and Ethyl dramas, and he and Carlton Morse launched the fad for mystery serials on the air with "The Cross-Eyed Parrot." He

played leading rôles in many NBC dramas and serials, including Memory Lane, which he has been writing, as well as playing its Pa Smithers character. He and Bobbe Deane appeared in "The Life of the Bellys." Before they joined the NBC staff the Maxwells headed their own stock company.

Ψ

A new departure in the technique of producing radio drama has been introduced in the broadcasts by Mary Pickford and Company over National Broadcasting Company networks. The new set-up, adapted from the sound-stage used on the movie lots in Hollywood, is designed to give greater intimacy to the broadcast.

A room-size space is set apart from the rest of the stage in NBC's auditorium studio in Radio City, and the microphone at which Miss Pickford and her company perform is set in the center of this space.

Surrounding on three sides are wings and a back drop, but the stage is open to an audience in front. The orchestra that furnishes the background music for the drama is placed at the side of the stage but outside the three-sided "room."

A second microphone is used to pick up the orchestral effects, thus giving separate control of the musical and dramatic portions. The high wing rises between the two microphones, and the stage director is placed in sight of both the music director and the actors to give the proper cues.

Ψ

"Modern dance music, contrary to general belief, undergoes style changes in much the same manner as the automobile," avers Maestro Tommy Thomas, KOMO-KJR's newest orchestra director. "A few years ago the trend was to brassy and showy effects," says Tommy, "and many a dance orchestra sounded like John Phillip Sousa's band passing a reviewing stand." Nowadays, and especially on the air, everything is "soft and sweet." Flute trills, violin obligati and "sub-tone" clarinets being the favorite form of interpretation at the hands of the Whitesmans, Valles and Lombardos that greet you through the loudspeaker.

When asked what he thought would be the future trend, Thomas quickly replied, "The tango." "For the simple reason that it gives a wider play for unusual musical effects," he continued, "plus an insinuating rhythm that is really just beginning to catch on with the general dancing public."

Tommy Thomas, who conducts his own Romance Time orchestra on KJR, backs up his statements with fourteen years of orchestra and radio experience, having started on his own at the age of fifteen.

Michael Raffetto, who plays Paul in One Man's Family, is one of the most absent-minded members of the acting profession. He even forgot he had an automobile the other night.

Mulling over a radio play as he left the ferry train at his Berkeley station, he walked right past the car he had parked at the station that morning, went home, spent a pleasant evening reading and awakened with a start at 1:30 in the morning to remember the car. Realizing he would get a ticket for all-night parking, he struggled up, dressed, walked the mile and a half in the darkness to where the automobile stood, drove it home, put it to bed and then, at about three o'clock, followed suit himself.

Ψ

"Radio City," a new American composition with the rhythm of the Morse code as its motif, will be one of the results of Meredith Willson's recent vacation in New York.

The general musical director of the NBC Western Division has begun work on the suite, which in its first movement will spell "R-A-D-I-O C-I-T-Y" in a succession of musical dots and dashes so scored that telegraph operators will be able to read it. The romance of wireless, translated into sharps and flats, will continue in staccato rhythm to the opening of the second movement, "The Fountain Plaza." This will resolve it-

self into a smooth, melodic sound poem inspired by the fountain in the Rockefeller Plaza.

"Coming on that beautiful fountain in which the water and the shrubbery make such a contract to Fifth Avenue, it is impossible not to pause in thrilled admiration," says Willson.

The third movement may alternate the wireless theme of the first with the melody of the second, and then flow into an interpretation of Radio City as a whole.

Ψ

Graham McNamee's reel voice talks on. The famous NBC ace announcer, after rounding out five years as the Universal Newsreel Talking Reporter, has signed another two-year contract as celluloid commentator.

McNamee has established a solid reputation as "a voice in the dark." Newsreel fans say his remarks on the screen reflect the same exhilarating punch as his reports on the air.

Graham steals away from the studios twice a week to devote twelve to fourteen hours to the preparation of newsreels at Astoria, Long Island. The time is consumed in getting all the facts and in seeing the film three times. After this he works up appropriate descriptive remarks, which are recorded to synchronize with the film.



Professor E. G. Linsley

gives you impressions of a world-cruise in four fascinating talks

This noted author-lecturer, one of the most noted scientific authorities in the West, will speak four consecutive Friday evenings—8:45 to 9—December 7, 14, 21 and 28, on the following subjects:

"The Great Boulder Dam."

"The Panama Canal from the Largest Ship Ever to Navigate It"

"A Great Plan to Redeem the Holy Land, and the Engineering Feat to Reclaim this Country."

"The World's Most Beautiful Building—The Taj Mahal."

KTAB

The OPENING CIRCUIT



This department is open to all. Send in your letters. Anonymous letters will not be published. Give full name and address.

We Deleted Some of the Adjectives

I just finished reading my "Broadcast Weekly" and am I amused at those letters about "One Man's Family"! It is hard to believe that such . . . people are really living in this day and age! As if being sponsored by a cigarette company could affect the merits of any radio program or the morals of any one! Absurd and ridiculous!

Do not these pious, holler-than-thou people realize that "One Man's Family is only mythical—that the entire cast are, after all, only acting and doing so for a living—for money and only for money?

Do not these "overgood" individuals realize that being sponsored by such a firm means a big boost in all their salaries, and their admirers should rejoice—not pick flaws and try to preach. It's nauseating, really.

In our family, my husband, my son (who is twenty), and I sit by the fireplace enjoying our cigarettes and would think anyone who criticized us was absolutely out of their mind! And we are just one of the millions of modern families of today. Absolutely moral, living our own lives and allowing others to do likewise. We do not set ourselves up to judge and condemn.

Beth Holly, to me, is as sweet as ever and more power to her and to Carleton Morse for obtaining such an important sponsor! Congratulations, Mr. Morse, and don't lose any sleep over the little "small town condemners," who are really ludicrous to shriek with such horror over the smoking of a cigarette. I suppose these same narrow fault-finders never listen to Ben Bernie, the beer booster, either? I don't drink beer, but I surely like Bernie. I don't use Chase and Sanborn coffee, but I like Eddie Cantor—and, after all, there is about as much said against the habit of coffee drinking as there is against cigarette smoking, isn't there?

Such people as these long-nosed critics make me laugh. The gay, bad (?) nineties were long, long ago. After all, this is an age of broad-minded progress.

Success to Kentucky Winners and "One Man's Family." They can all smoke and I'll still like 'em.

Mrs. H. B., San Francisco.

Father Barbour's Explanation Not Ample

It is with a deep feeling of disappointment that we see "One Man's Family" change time and sponsors. It means that there are many, many of us who will not get to hear it at all.

But not being able to hear it is not the greatest disappointment. To change from a good, clean sponsor whom all can accept to one which is questionable to some, is not progress to us. Carlton E. Morse has had the opportunity of doing a real service to the American people. Now he has turned that service into a temptation, and as a result has weakened his characters. The Barbour family has lost its morale. To have Paul and Father Barbour advocate smoking, with their background, is to hold them up to ridicule.

Imagine any mother saying, "Now children don't play with matches, but if you do play with matches, be sure you play with the right kind." Any match is still a match and will start a fire. Any cigarette is still a cigarette and is injurious to growing children.

We do not believe that any man such as Carlton E. Morse with the ability to portray beautiful characters will long continue in a mistake. It is too bad that the finest thing on

the air should fall to the level of the commonplace.

Is there not some wholesome product which has money enough to sponsor this program? Let us hope that "One Man's Family" will emerge from this experience into a clearer and more wholesome atmosphere than that which is afforded by the blue rings of tobacco smoke.

M. E. S., Mrs. M. M. M., Mrs. H. K. B.,
Miss R. E. A., Mrs. M. B., K. P.,
Vallejo, Calif.

"Smoke and Let Smoke"

Doggone! I could cheerfully cuss. Just when I get Guy Lombardo 'n' his orchestra all lined up, come your new "Broadcast Weekly" and nary a word as to when or where I could lend ears to his ritzy orchestra. Am I irked? Why isn't he listed every week?

Heh! heh! I'm getting quite a snort out of the squabble over "One Man's Family." I would not miss that program for anything, whether Kentucky Winners or "Ginsberg Salted Pork" is sponsoring it. This idea of not listening to it because Beth shared a cigarette with Paul is silly. After all, it's only a radio play and why take it so seriously? I don't smoke or ever intend to, but if anyone else smokes that's their affair. Congrat to L. O. P., Montana, M. M. M. of San Francisco, and Mrs. H. C. of Diamond Springs, California. That's my idea exactly.

I certainly enjoy the "Broadcast Weekly" and couldn't get along without it. The Open Circuit is the first thing I read, and do I get a bang out of it. I've been tempted to write several times, but this is the first time I've actually grabbed my pen and "went 'n' done it." I have so many favorite programs that I haven't time to stop and listen to programs that "gripe" me. A few of my favorites are: Al Pearce and the Gang, Betty and Bob, Jack Benny, Phil Baker, Ma Perkins, The Shell Show, Camel Caravan, Ed Wynn, Gene and Glenn, Hollywood Country Church, Rev. C. E. Fuller, and the Merry Makers.

E. H. D., Acampo, Calif.

Impression of a Fourteen-Year-Old Girl

I, also, was very sorry when I learned that Beth, with her high ideals of womanhood, smoked with Paul. I do not blame Carlton Morse, though, for I am sure he would not have done it if he had not felt it necessary to add a touch of modern reality to his play. I am just fourteen, and possibly entering the period of years in which we form our life habits, but I do not feel that Beth smoking would influence me as much as the advertisements in magazines. Especially those for Camels, which picture the daughters, wives, or mothers of famous or popular men, smoking.

I do not think less of Paul for not giving Teddy a selection from the Bible to go to sleep on, though I had supposed he would, and know many, many true, wholesome, good people who do not attend church or go to sleep with a Bible verse in their head.

I think the page devoted to reading the handwriting of radio stars in the "Broadcast Weekly" is a swell idea. Just as the magazine itself is a swell one.

I remain a grateful fan to "One Man's Family."

M. E. K., Calistoga, Calif.

SILHOUETTES

FOR twelve years Mr. and Mrs. Clyde Boswell paid Professor Otto Finck to teach their daughters, Connie, Vet and Martha, all he knew about the violin, 'cello and piano. Those fond parents fully expected that their offspring would be one of the foremost string trios in the country, but, as of old, the best laid plans of mothers and fathers "gang aft agley." Instead, the girls have received top radio billing for the past four years as the hottest of harmonizers and now are heard in contrast to Bing Crosby's crooning on the Woodbury program each Tuesday over the Columbia network.



MARTHA, CONNIE and VET BOSWELL

It is only natural that the Boswell Sisters should be thus talented, for they are only carrying on the musical endeavors of their mother, father, aunt and uncle (two sisters who married two brothers), who were known as the Boswell Quartet, and whose combined voices became one of the featured attractions at amateur musicales in New Orleans.

It was when Mr. Boswell left their New Orleans home for an extended business trip that these three youngsters, eager to shine in other fields, laid aside their classical trappings. Connie learned to play the sax, Vet strummed a banjo, Martha kept her place at the piano, and before long Brahms had given way to the hottest rhythms. Close upon the heels of this new penchant for jazz came a desire to sing as well, and their latent talent as specialists in vocal harmonies soon came to light. Their distinctive style has brought them far more fame and fortune in radio, screen and stage fields than they could have hoped for as the Boswell String Trio.

Their first professional appearance was at the Orpheum Theatre in New Orleans and a short while later the trio made their radio debut over the local station. Accepting a six-weeks' engagement in Chicago, they left New Orleans for a triumphal procession that

has lasted six years. From the Windy City the Boswells continued making appearances throughout the Middle West and finally landed in Los Angeles. Their first network program was as guest artists on "California Melodies," the same feature that launched Bing Crosby. This was the turning point in their career. A radio executive heard this performance and they were immediately rewarded with a "big time" offer.

The sisters came East and in between programs fulfilled an important assignment in the film, "The Big Broadcast." Shortly after its release the trio left for England and the Continent, where their hot harmonies were the rage. Upon the trio's return to New York, several commercial sponsors vied for their signatures on contracts.

The Boswells now are in Hollywood at the scene of their first triumphs, where they have assumed a prominent position in the studio and social life of the film capital. Cinema-going audiences have recently heard and seen them perform in Constance Bennett's film, "Moulin Rouge," and their latest screen scoop, "Transatlantic Merry-Go-Round," is soon to be released.

Innerviews: A year separates each from the other—Martha is oldest, Connie next, and then Vet. . . . They are very superstitious and always braid a lock of hair before performing on the stage, and cross their fingers during broadcasts. . . . The trio almost met death when their car skidded and turned over three times. . . . Connie writes poems, plays and short stories for her own amusement, but cannot be induced to allow them to be published. . . . Spare time finds Vet painting, while Martha confines her talent to working out their snappy arrangements. . . . Connie is exactly 5 feet tall, weighs 105 pounds; Vet is 5 feet 3½ inches tall and weighs 112 pounds; while Martha is 5 feet 3 inches tall and weighs 115 pounds. . . . All have dark brown hair and eyes.

A VIOLIN prodigy at seven, a prize-winning pianist at 14 and an opera singer and featured radio artist at 21 is the record of Gina Vanna, young soprano of the NBC House by the Side of the Road program . . . dark-eyed and black-haired, Gina won a \$1,000 prize as pianist when 14 years old, and shortly thereafter, took up the study of voice. . . . Paul Longone of the Chicago Grand Opera Company heard her sing on radio and persuaded her to try opera . . . made her debut with Chicago Grand Opera Company last season (1933-34).



HANDWRITING

AND

Radio Personalities

By ZITA LOMAS

CLAUDE SWEETEN

ENTER Exhibit C in this series of handwriting analyses of radio personalities . . . CLAUDE SWEETEN, KFRC musical director. . .

Mr. Sweeten is one whom I didn't see when I was collecting samples of writing. However, they tell me that he is heavy-set and blondish.

He also has a dash of the "prima donna temperament." But it wasn't "they" who told me that. It's the signature. . .

*Dear Miss Lomas
why haven't I had the
Pleasure of meeting you?
Claude Sweeten*

NOTE: This handwriting is considerably reduced from original.

Take a look at it. What is the first thing to strike the eye? Right—the first time. That curlycue stuck in between the two names is a dead give-away. Such a feature in a signature always indicates a liking for attention, praise, admiration and recognition.

Since the writing in general is plain and unpretentious, we can be sure that Claude Sweeten is not a vain or conceited person. It is simply that he is good, and he knows it, and wants others to recognize the fact. That curlycue, and the large, inflated capital "C" in the signature reflect the consciousness of self, in a professional way.

Activity and energy are leading indications of this quick, angular and sloping writing. Its author is innately averse to ease, indolence and idleness, and so it is essential to his temperament that he be kept busy and actively occupied. His temperament is the nervous, excitable and highly-strung kind which cannot relax, or take things calmly.

* * *

The more a handwriting slopes to the right, the more emotional is the nature of its author. And angularity enhances the signifi-

cance of the sloping hand. Therefore we can be sure that this writer is an ardent person, capable of a strong, deep devotion, either to people or to "causes." All of his feelings are acute. There is nothing lukewarm about him.

* * *

An interesting feature of his writing is the t-bars. Two of them are long and strong, showing will-power, courage and fortitude, while the other two are short and to the left of the stem of the letter, denoting a measure of procrastination. Since there are other signs of strength and resolute purpose (two chopped-off lower projections, a single-stroke "t" and a general firmness and evenness of pressure to the writing as a whole) we know that the writer is a strong-willed and positive person. But at the same time he must watch out for that tendency to procrastination, and not allow it to grow on him. There are times when he will putter about, doing everything under the sun, for no other reason than to stall off the main issue!

* * *

The lines of Claude Sweeten's writing are ascendant. This expresses positive qualities of optimism, hopefulness and buoyancy of spirits. It is also, in this case, a sign of energy and activity. Read in conjunction with the fairly high capitals, it means ambition and aspiration.

Notice, however, that while the general trend is upward, every line commences on a downward slope, and then ascends to the end. This is the calligraphic expression of one who is struggling against some sort of adverse circumstances or discouragement, but who, because of inherent optimism and pluck, keeps himself in a state of hopefulness and enthusiasm.

* * *

Because he is nervous, high-strung, impatient, changeable and somewhat erratic, Claude Sweeten wouldn't be the easiest person to hit it off with. He can be very abrupt and sarcastic, too, which is often disconcerting to others. And on top of that, he is a person who, while exacting in his work, and in his demands upon others, is careless and absent-minded about many everyday matters, such as appointments, promises and so on.

* * *

You have just read an analysis of the handwriting of a well known radio personality . . . Why not have YOURS analyzed? . . . See special offer on page 13 of this issue. . .

SUNDAY Programs

Dec. 16, 1934

7:00 to 7:30 A. M.

KNX—Breakfast Club
 KGDM—Weather, Records
 KSL—Church of the Air
 KFOX—El Despertador
 KOA—Radio Pulpit

7:30 to 8:00 A. M.

• KPO & network—Good Morning; Mickey Gillette; 7:45, Lee S. Roberts and guest artists
 KGDM—Recordings
 KVI—7:45, Temple Baptist Church
 KNX—Bill Sharples and his Breakfast Club Gang
 KFOX—Recordings
 KSL—Comic Strips
 KOA—Morning Musicale

8:00 to 8:30 A. M.

• KPO & network—Tid-Bit; 8:05, Ray Heatherton, baritone; 8:15, The Alling House
 KGO—Pair of Pianos
 KYA—8:15, Christ. Science Reading
 KROW—Commuters Clock
 KJBS—Close Harmony
 KGDM—News; Organ
 * KFRC & netwk—Cleveland String Quartet
 KJR—Coast to Coast, recorded
 KEX—Sacred Music; 8:15 Concert
 KVI—Temple Baptist Church
 KHQ—Tidbits
 KHJ—Sunday Times Comic
 KNX—Bill Sharples and his Breakfast Club Gang
 KFWE—Records; Funnies
 KFI—Church Quarter Hour to 8:15
 KFOX—Percy and His Father; 8:15, Examiner Comics
 KSL—Comic Strips
 KOA—News; 8:05, Music; Talk

8:30 to 9:00 A. M.

• KPO & network—Major Bowes' Capitol Family
 KGO—Mickey Gillette and Music
 KYA—Science Reading; 8:45, Sabbath Hymns
 KTA—Sunrise Symphony
 KFEW—Swedish Meditations
 KJBS—Morning Concert
 KGDM—Chapel
 * KFRC & network—Salt Lake Tabernacle Choir and Organ
 KOA—P. I. Comic Section
 KVI—Radio Gospel League
 KOIN—Sunday Concert
 KHQ—Gus Mack
 KJR—Coast to Coast, Recorded
 KFWE—Funny Paper Man
 KNX—Bill Sharples, Breakfast Club
 KECA—Recordings
 KFOX—Examiner Comics

9:00 to 9:30 A. M.

• KPO & network—Sunday Morning Special: Col. Rod, narrator, drama
 KGO—Chronicle Comics
 KYA—"Fellowship of the Air"; 9:15, Funny Paper Man
 KTAB—Seventh Day Adventists
 KROW—Morning Concert
 KJBS—Popular Hits
 KGGC—Melodies; Bargain Basement
 KGDM—Bondons
 KQW—Organ; Congo Program
 * KFRC & network—Salt Lake Tabernacle
 KOIN—Journal Comics
 KJR—Irish Minstrels; Early Echoes
 KNX—Help for the Day; 9:15, Chnd. Mehra
 KFWE—Electrical Transcription
 KECA—Recordings
 KFOX—Recordings
 KFSD—Studio Program
 KOA—Capitol Family



CLAUDE SWEETEN
 KFRC—Musical Director

9:30 to 10:00 A. M.

• KGO & network—Radio City Music Hall on the Air
 KPO—Singable Songs: Emil Polak's Orchestra
 KYA—Funny Paper Man
 KTAB—Seventh Day Adventists
 KROW—Morning Concert
 KJBS—Dance Orchestra; Records
 KGGC—Songs of Today; Concert
 KGDM—Watch Tower; 9:45, Comics
 KQW—Light Opera; Funnies
 * KFRC & network—Meditations in Melody; 9:45, Romany Trail
 KOIN—9:45, Dean Matthews
 KOA—Democratic Talk to 9:45
 KHQ—Magic Travels to 9:45
 KOMO—For All the Family
 KNX—Elec. Trans.; 9:45, Organ
 KPOX—Recordings
 KECA—Recordings
 KFWE—Records
 KGB—Signs of the Times to 9:45
 KSL—Schubach Prog.; Watch Tower

10:00 to 10:30 A. M.

• KGO & network—Radio City Music Hall on the Air
 KPO—Beaux Arts Trio: Instrumentalists
 KYA—Unc. Harry; 10:15, Choral
 KTAB—10th Ave. Baptist Church
 KROW—Watch Tower Program
 KJBS—Recordings
 KGGC—Timely Tunes; Records
 KQW—Salon Orchestra; 10:15, Baptist Church
 KGDM—Echoes of Nineties
 * KFRC & netwk—Church of the Air
 KOMO—For All the Family
 KECA—Music and Musical Forms
 KHJ—10:15, Randall String Quartet
 KNX—Playing the Song Market
 KFWE—Recordings
 KFOX—Dance Records
 KSL—Church of the Air
 KOA—10:15, Better Housing Talk

10:30 to 11:00 A. M.

• KPO & network—National Youth Radio Conference
 KGO—Sparklets: Coquettes, vocalists
 KYA—Old Rocking Chair; 10:45, Concert Stars

KTAB—Church Services
 KROW—Salon Organ
 KJBS—Dance Recordings
 KGGC—Request Hour
 KQW—Baptist Church Services
 KGDM—Recordings
 * KFRC & network—10 Fingers and 88 Keys; Art Kassel's Orchestra
 KVI—Col. Dames' Cosmetics
 KGW—Tommy Luke
 KJR—Judge Rutherford; Music
 KNX—Congo; Baptist Church
 KFI—Hawaiians; Dr. Casselberry
 KFWE—"The Family Circle"
 KFOX—Recordings
 KSL—Optical Program to 10:45
 KOA—Huffman Theatre Harmonies

11:00 to 11:30 A. M.

• KPO & network—Road to Romany
 KGO—Melody Lingers On; Josef Hornik's Orchestra
 KYA—Old St. Mary's Church Serv.
 KTAB—Church Services
 KROW—Oakland Community Church
 KJBS—College Airs
 KGGC—Request Hour
 KQW—First Baptist Church
 KGDM—First Baptist Church
 * KFRC & network—Lazy Dan the Minstrel Man
 KJR—Evergreen Empire
 KNX—Temple Baptist Church
 KFWE—Recordings
 KFOX—St. Lukes Church
 KECA—Recordings

11:30 to 12:00 Noon

• KPO & network—Lux Radio Theatre, featuring Guest Star
 KGO—Concert Gems: Emil Polak's Orchestra
 KYA—Old St. Mary's Church Serv.
 KTAB—Church Services
 KROW—Oakland Community Church
 KJBS—Dance Recordings; 11:45, Songs of the Hills
 KGGC—Style Parade; Records
 KQW—First Baptist Church
 KGDM—Church Services
 * KFRC & network—Royal Hawaiian Band
 KJR—Songs; Jewel Box
 KNX—Temple Baptist Church
 KFWE—Maude Hughes, pianist
 KFOX—St. Lukes Church
 KECA—Recordings
 KFSD—Organ, Jamie Erickson

12:00 to 12:30 P. M.

• KPO & network—Lux Theatre
 KGO—Bible Stories and Organ
 KYA—Organ Sonata
 KTAB—Church services
 KIX—Records
 KROW—All Request Program
 KJBS—Orch.; 12:15, Melodies
 KGGC—Marjorie Lee
 KGDM—Records; Portuguese Melodies
 KQW—Church; 12:15, Opera Stars
 * KFRC & network—New York Philharmonic Symphony
 KJR—International Musicale
 KFWE—Gold Star Rangers
 KNX—Concert Group
 KFOX—St. Lukes Church
 KECA—Recordings

12:30 to 1:00 P. M.

• KPO & network—The Maybelline Musical Revue
 KGO—Bible Stories
 KYA—Band Concert; Bargains
 KTAB—Church Services; 12:45, Paul Halsinger, Evangelist
 KIX—Familiar Melodies
 KROW—All Request Program
 KJBS—Auburn Airs; Records
 KGGC—Recordings
 KGDM—Portuguese Melodies
 KQW—Question Box; Tango Time

*KFRC & netwk—Symphony Orch.
KJR—Chimes of the East
KNX—Concert Group
KECA—Records
KFOX—Electrical Transcription
KFWB—Gold Star Rangers
KFSD—Choralla

1:00 to 1:30 P. M.

•KPO & network—The Rhythm Symphony, De Wolf Hopper, narrator
KGO—Melody Train
KYA—Calif. Composers Series
KTAB—L. D. S. Men's Chorus
KLX—Music; Spice of Life
KROW—Recordings
KJBS—Melodies; Dixie Marsh
KQW—Melodies; Dixie Marsh
*KFRC & network—Symphony Orch.
KJR—Seattle Pacific College
KNX—Louise Johnson, Astro-Analyst
KECA—Recordings
KFWB—Recordings
KFOX—Recorded Orchestra; 1:15, Man About Town

1:30 to 2:00 P. M.

•KPO & network—The House by the Side of the Road; Tony Wons and artists
KGO—Melody Train
KYA—Calif. Composers; Hebraics
KTAB—George Kruger, pianist
KLX—Recorded Program
KROW—Dance Hits
KJBS—Concert Record
KQW—Dance Music
KQDM—Lonesome Hobo
*KFRC & network—Symphony Orch.
KJR—Metropolitan Moods
KNX—Louise Johnson, Astro-Analyst
KFWB—Recordings
KECA—Vocational Adjustment; Hollywood Conservatory of Music
KFOX—Elec. Trans.; Organ

2:00 to 2:30 P. M.

•KPO & network—Sentinel's Serenade; Orch. and vocalists
KGO—Pan-Americana; Instrumentalists
KYA—Discovery Hour
KTAB—Chamber of Commerce; 2:15, Red Cross Playlet
KLX—Recorded Program
KROW—Dance Hits
KJBS—Marjorie Lee, pianist; Orch.
KQDM—Ansel Roby and Gang
KQW—Marjorie Lee; 2:15, Vocalist
*KFRC & network—Open House
KJR—Hollywood Temple
KNX—Exposition Park Concert
KECA—Classic Hour; Records
KFOX—Christian Science; 2:15, To be announced
KFWB—Records; Professional Football
KFSD—Old-Time Program

2:30 to 3:00 P. M.

•KPO & network—American Bosch Radio Explorers Club; 2:45, Terhune Dog Drama
KGO—Doorways to Yesterday
KYA—Light Opera
KTAB—Military Music
KROW—Theatre of the Air
KLX—Pianist; Song Souvenirs
KJBS—Allied Merchants; Concert
KGGC—Sunday School
KQDM—Ansel Roby and Gang
KQW—Independent Merchants; Opera
*KFRC—Congoin (Elec. Trans.)
*KFRC & network—2:45, Rabbi Magnin
KVI—2:45, Judge Rutherford
KJR—Calvary Presbyterian Church
KOL—2:45, Musicales
KNX—Concert
KECA—Recordings
KFWB—Professional Football

KQW—Popular Orchestra
KFOX—To be announced
KHJ—The Story of Perfume to 2:45
KFSD—Old Time Program
KSL—Victor Herbert's Melodies; Electrical Transcription

3:00 to 3:30 P. M.

•KPO & network—Catholic Hour
KGO—Charles Jacobs, trumpeter; Tom Mitchell, baritone
KYA—Lite Opera
KTAB—Military Music
KLX—Records
KROW—Vesper Service
KJBS—Recordings; Philo Concert
KGGC—Church Service
KQDM—Serenader; Records
KQW—Violinist; Musical Program
*KFRC & network—Music by Gerstshwin
KGO—Nick Flowers; Music
KOMO—Old Songs of the Church
KFI—Dramatic Program
KNX—Concert
KFOX—To be announced
KFWB—Professional Football
KFSD—Royal Brown, organist
KOA—Home Sweet Home

3:30 to 4:00 P. M.

•KPO & network—Grand Hotel; Drama, with Anne Seymour and Don Ameche
KGO—Vagabonds Quartet
KYA—First Ame Zion Church Choir
KTAB—Quartet; Congoin
KLX—Manila String Orchestra
KROW—Vesper Service
KJBS—Musical Styles
KGGC—Church Service
KQW—Concert Favorites
KQDM—Organ
*KFRC & network—Smilin' Ed McConnell; Edith Karen, soprano
KOL—3:45, Footpaths of Music
KVI—3:45, Amusement Tips
KJR—Cornish School Program
KNX—Concert
KECA—Records; Spirituals
KFWB—Professional Football
KFOX—To be announced
KFSD—Feature Program
KSL—3:45, Melodies

4:00 to 4:30 P. M.

•KPO & network—Martha Mears, contralto; 4:15, John B. Kennedy
KGO—To be announced; Paul Carson, organist
KYA—Piano Concert
KTAB—Santa Claus; World Affairs
KLX—Recordings
KROW—Symphony Concert
KJBS—Dance Orchestra
KQW—Bible; 4:15, Semi-Classic
KQDM—Records; Danch Orchestra
*KFRC & network—California Melodies
KOL—Drama to 4:05
KOIN—Toyland Express; Old Songs
KHQ—Shrines of Beauty; Doc Savage
KJR—4:15, Woodlawn Playlet
KVI—4:15, High School News
KOMO—John Spargur; Royal Seven
KNX—Amagon; Silver Strains
KFI—Organ Recital
KFOX—To be announced
KFWB—Professional Football
KSL—4:15, Melodic Portraits
KOA—4:15, Melodic Portraits

4:30 to 5:00 P. M.

•KPO & netwk—Joe Penner, comedian; Harriet Hillard, vocalist; Ozzie Nelson's Orchestra
KGO—Paul Carson, organist; 4:45, Mickey Gillette's Music
KYA—Vesper Services
KTAB—Little Serenade
KLX—Carefree Capers
KROW—Recreation Singers
KJBS—Recordings to 4:45

KQDM—Recordings to 4:45
*KFRC & netwk—Chicago Knights; 4:45, Americans of Tomorrow
KOL—Radio Pen Friend to 4:45
KJR—Jewish Program; Notes in Rhyme
KNX—Adventures in Literature
KECA—U. S. C. College of Music
KFOX—Nazarene Church
KFWB—Recordings
KFSD—Symphony Concert

5:00 to 5:30 P. M.

•KPO & network—Chase and Sanborn Opera Guild
KGO—Mickey Gillette's Music; 5:15, Harry Stanton, basso
KYA—Aviation Talk
KTAB—Religious Services
KLX—Old Man Soliloquy; 5:15, Melody Palette
KROW—Rhythm Revue
KQW—Semi-Classic; Catholic Prog.
*KFRC & netwk—Ford Sunday Evening Hour
KJR—Emanuel Tabernacle
KNX—Ethel Hubler; Dr. Matthews
KECA—Musical Celebrities; records
KFWB—Recordings
KFOX—Nazarene Church
KFSD—Symphony

5:30 to 6:00 P. M.

•KPO & network—Chase and Sanborn Opera Guild
KGO—Gunnar Johansen, pianist
KYA—Symphony Concert
KTAB—Religious Services
KLX—Covered Wagon Jubilee
KROW—Rhythm Revue
KQW—Concert
*KFRC & netwk—Ford Program
KJR—Vindabonians
KNX—Dr. John Matthews
KECA—Recordings
KFWB—Recordings
KFOX—Theatre News; Orchestra
KFSD—5:45, Farley's Rangers

6:00 to 6:30 P. M.

•KPO & netwk—Manhattan Merry-Go-Round; Orch. and vocalists
KGO—Henry M. Hyde; 6:15, Personal Closeups; Radio Artist interviewed by Gypsy
KYA—Rabbi Burstein; Melodettes
KTAB—Nevada Nighthiders
KLX—Mixed Quartet
KROW—Symphony; Watch Tower
KQW—Hits of the Past; Records
KJR—Angelus Hour
*KFRC & network—Alexander Woolcott with Armbruster's Orch.
KFWB—News; Mysteries; Fun Fest
KECA—Wesley Tourtellotte, organ
KNX—Musical Program
KFOX—News; Rolly Wray; Drama
KFSD—Organ Melodies

6:30 to 7:00 P. M.

•KPO & network—The American Album of Familiar Music; Frank Munn; Virginia Rea, vocalists
KGO—Palace Hotel Ensemble
KYA—Sonia Sapiro, pianist
KTAB—Scores, Charlie Tye
KLX—Ran Wilde's Orchestra
KROW—Recordings
KQW—Popular Vocal; Songs
*KFRC & network—Salon Moderne
KOL—The Pioneers
KOIN—Moods in Music to 6:35
KJR—Angelus Hour
KFWB—Fun Fest; Organ; Orchestra
KNX—Rev. C. E. Fuller
KFOX—School Kids; Pioneers Sons
KECA—W. Tourtellotte, organist
KFSD—Savoy Troubadors
KSL—Father Dwyer, address

7:00 to 7:30 P. M.

•KPO & network—Hall of Fame
KGO—Tales from Shakespeare

KYA—March of the Nations
 KTAB—Echoes of Portugal; Morgan
 Production
 KLX—Variety Hour
 KROW—Harmonies; Rhythms
 KGGC—Church Service
 KQW—Concert Orchestra
 *KFRC & network—Wayne King's
 Orchestra
 KJR—The Builders
 KNX—Rev. C. E. Fuller
 KFWB—Jack Joy's Orchestra
 KECA—Pierce Bros. Quartet
 KFOX—Melody-Harmony-Rhythm
 KFSD—Furnblitt's; 7:15, Vocalist

7:30 to 8:00 P. M.

• KPO & network—Pontiac Program:
 Orchestra and vocalists
 KGO—Rudy Selger's Orchestra
 KYA—Concert; 7:45, Louise Taber
 KTAB—Church Serv. Bapt. Church
 KLX—Variety; 7:45, William Don,
 eccentric comedian
 KROW—Associated Students
 KGGC—Church Service
 KQW—First Baptist Church Service
 *KFRC & network—Merrymakers
 KJR—World Revue
 KFWB—Electrical Transcription
 KECA—Nick Harris; Recordings
 KFOX—Boy Detective; Ballads
 KNX—Fireside Phantasia; Talk

8:00 to 8:30 P. M.

• KPO & network—Wendell Hall &
 His Ukulele; 8:15, Walter Winchell
 KGO—Homik's Viennese Program
 KYA—Cabbing About; Opera
 KTAB—Church Services, Baptist
 KLX—Hour of Melody
 KROW—Oakland Community Church
 KQW—Baptist Church Services
 *KFRC & network—Merrymakers
 KJR—First Church of Christ
 KNX—Presbyterian Church
 KFWB—Hi-Jinks, Don Smith, M.C.
 KECA—Recorded Program
 KFOX—Christian Science Church
 KFSD—Thoughtful Service to 8:15

8:30 to 9:00 P. M.

• KPO & network—Jack Benny and
 Artists; Don Bestor's Orchestra
 KGO—Paul Martin's Music
 KYA—Opera Recordings
 KTAB—Church Services
 KLX—Hour of Melody
 KROW—Oakland Community Church
 KQW—Baptist Church Services
 *KFRC & network—Evening Dreams
 KOL—Comedy Stars to 8:45
 KOIN—Comedy Stars; 8:45, Elchen-
 laub Ensemble
 KJR—Church Services
 KFWB—Hi-Jinks
 KNX—Church Services
 KECA—Recordings
 KFOX—Christian Science
 KSL—L. D. S. Services

9:00 to 9:30 P. M.

• KPO & network—The Melodious
 Silken Strings
 KGO—Flirtations; Vocal Trio
 KYA—Opera
 KTAB—Church Services; 9:15, Rod
 Hendrickson, Humor Stories
 KLX—World Revue
 KROW—Foreign Watch Tower
 *KFRC & network—Hi-Jinks
 KOIN—Krausmeyer & Cohen; Little
 Show
 KOL—Krausmeyer & Cohen to 9:15
 KVI—Krausmeyer & Cohen; 9:15,
 Memories with Edmund Breese
 KJR—News; National Conference
 KFWB—Amer. Caravan, Drama
 KNX—News; 9:15, The Crocketts
 KECA—Countess Li Guoro, pianist;
 9:15, Records
 KFOX—Beverly Hillbillies
 KFSD—Moments of Melody
 KSL—Musical Album

9:30 to 10:00 P. M.

• KPO & network—Broadcast to Byrd
 Expedition
 KGO—Reader's Guide
 KYA—Opera; 9:45, News; Answer
 Man
 KTAB—Religious Services; Jimmy
 Cook's Sidelines
 KLX—News; Metropolitan Moods
 KROW—Tango Time
 *KFRC & network—Hi-Jinks
 KOL—9:45, News Flashes
 KVI—News; Gospel League
 KGW—G. A. Paine; Cystex
 KOMO—Doc Savage; Romance Time
 KHQ—Memories; Crazy Wells
 KFI—Music; 9:45, Dream Drama
 KNX—The Crocketts
 KFWB—Slumbertime
 KFOX—Beverly Hillbillies
 KECA—Records to 9:45
 KSL—Temple Square; Organ
 KOA—Donnelly James; Orchestra

10:00 to 10:30 P. M.

• KPO & network—Richfield Repor-
 ter: Sam Hayes
 KPO—10:15, Coakley's Orchestra
 KGO—John Teel, baritone
 *KGO & network—10:15, Paul
 Carson, organist
 KYA—Bobbie Gram's Orchestra
 KTAB—Japanese-American broad-
 casting Society Program
 KLX—Dance Music
 KROW—Concert Gems
 KFRC—News to 10:10
 *KFRC & network—10:10, Organ;
 10:15, Joe Sullivan, pianist
 KOIN—Concert Gems
 KOL—To be announced to 10:15
 KOMO—10:15, Jack & Melody Maids
 KJR—Musical Jigsaws
 KHJ—News; 10:10, Dance Orchestra
 KNX—The Crocketts
 KFWB—News; Ed Eben, Organist
 KFOX—News; Organ
 KECA—Musical Celebrities; Organ

KGB—News; Organ; Pianist
 KSL—Temple Square
 KOA—John Teel; Organ

10:30 to 11:00 P. M.

KPO—Orchestra
 *KGO & network—Paul Carson,
 organist, Bridge of Dreamland
 KYA—Concert Memories
 KTAB—Dance Orchestra
 KLX—Dance Music
 KROW—Quiet Harmonies
 *KFRC & network—Orville Knapp's
 Orchestra
 KVI—Dance Orchestra
 KOMO—Viennese Vagabonds
 KECA—Recordings
 KFOX—Tex Howard's Orchestra
 KFWB—Dance Orchestra
 KOA—Cosmopolitan Orchestra

11:00 to 11:30 P. M.

• KGO & network—Press-Radio News;
 11:05, Freddie Bergin's Orchestra
 KPO—News; Midnight Melodies
 *KFRC & network—Dick Jurgens'
 Orchestra
 KTAB—Dance Orchestra
 KROW—Dance of the Hour
 KGW—To be announced
 KHJ—Dance Orchestra
 KFWB—Clyde Leach's Orchestra
 KFOX—Dance Orchestra

11:30 to Sign Off

• KGO & network—Freddie Bergin's
 Orchestra
 KPO—Midnight Melodies
 *KFRC & network—Organ Melodies
 KTAB—Club Tivoli Orchestra; 11:45,
 DX Program, J. Malloy
 KROW—Music; Midnight Vagabond
 KOL—Organ Recital
 KVI—Orchestra
 KHJ—Midnight Moods
 KFOX—Freddie Carter's Orchestra
 KGD—12, Music and News
 KJBS—12:01, Owl Program to 7 a.m.

Character Analysis

By ZITA LOMAS

For a very limited time only, *Broadcast Weekly* offers a highlight analysis of your handwriting by Zita Lomas (250 to 300 words) for only 25 cents when accompanied by a new subscription, renewal or extension to *Broadcast Weekly*.

— — — MAIL THIS COUPON TODAY — — —

BROADCAST WEEKLY
 1114 Mission St., San Francisco

Gentlemen: Send me BROADCAST WEEKLY for one year (or six months) and a highlight character analysis from the specimen handwriting on separate sheet enclosed. I enclose herewith \$1.75 (or \$1.00).

Name.....

Address.....

City..... State.....

New Renewal Extension

(Subscription **MUST** accompany this offer as the 25 cents does not begin to cover the cost of this personal analysis.)

MONDAY Programs

Dec. 17, 1934

7:00 to 7:30 A. M.

- KPO & network—Harvest of Song; 7:15, Holman Sisters, piano duo
- KYA—Musical Clock
- KTAB—Cuckoo Club; Stocks
- KROW—Commuters Clock
- KJBS—Alarm Klok Klub Program
- KQW—The Breakfast Hour, rec'ds
- KFRG—Recordings; 7:25, Stocks
- KGDM—News; Records
- KOL—Organ Revellie, Don & Frank
- KVI—Daybreak Devotional
- KHQ—Morning News; Program
- KFI—7:15, Louis Rueb, exercises
- KHJ—Recordings and Stocks
- KNX—Bill Sharples Breakfast Club
- KECA—Recordings
- KFSD—Early Birds; Pep & Ginger
- KGB—7 o'Clock Club
- KSL—News; Adv. Review

7:30 to 8:00 A. M.

- KPO & netwk—Financial Service; 7:45, Tom Mitchell, baritone
- KGO—Betty Brunn, vocalist; 7:45, Joe White, tenor
- KYA—Musical Clock
- KTAB—The Texans
- KROW—Commuters Clock
- KJBS—Alarm Clock Club
- KQW—Breakfast Hour
- KFRG—Seal Rocks Broadcast
- KGDM—Gilmore Oil Program
- KGW—Crazy Mountaineers
- KOL—Organ Revellie
- KVI—Talk; Morning Varieties
- KJR—Sunrisers; 7:45, Shadows on the Clock
- KHQ—Financial; 7:45, Crazy Wells
- KFI—Market Quotations to 7:45
- KHJ—Records and Stocks
- KNX—Bill Sharples Breakfast Club
- KECA—Bible Fellowship; Records
- KGB—Stocks; Seven o'Clock Club
- KSL—Advertisers Review

8:00 to 8:30 A. M.

- KPO & network—Hour of Memories; U. S. Navy Band
- KGO—Crosscuts Log o' the Day
- KYA—Christian News Reading; 8:15, Mr. & Mrs. Reader
- KTAB—Shipping News; Santa Claus
- KLX—Recorded Program; Stocks
- KROW—Commuters Clock
- KJBS—Morning Varieties
- KQW—Morning Melodies
- KGDM—Serenaders; 8:15, Records
- *KFRG & netwk—Exercise & Appreciation; 8:15, Fats Waller Rhythm Club
- KOL—8:15, Cecil and Sally
- KVI—Mountaineers; Market Specials
- KOIN—Memories Garden
- KOMO—Morning Reveries
- KHQ—Studio Programs to 8:15
- KFI—Church; Airplane Man
- KNX—Gene Autrey; Help for the Day
- KGB—Recordings to 8:15
- KSL—8:15, Good Morning Judge

8:30 to 9:00 A. M.

- KPO & network—U. S. Navy Band
- KGO—Crosscuts of the Day
- KYA—Flower Talk; Notebook
- KTAB—Radio Shoppers' Digest
- KLX—Covered Wagon Jubilee
- KROW—Novelty Review
- KQW—Morning Concert
- KGDM—Records; 8:45, Health Talk
- KJBS—Aubrey Loux, pianist; Records
- *KFRG & netwk—Hollywood Country Church
- KOMO—Varieties; Mary's Garden
- KHQ—Review; 8:45, Home Comfort
- KNX—Song Bag; Talk
- KFCA—Recording
- KSL—Cal-O-Dine; Voice of Health



BARBARA BLANCHARD
NBC—Vocalist

9:00 to 9:30 A. M.

- KGO & network—Fields & Hall; songs and patter
- KGO—9:15, Johnny Toffoli, accordion
- KPO—Barbara Lee, Breakfast Club
- *KPO & network—9:15, To be announced
- KYA—Concert; Prudence Penny
- KTAB—Hour of Prayer
- KLX—Shopping List
- KROW—Romance; Vocal Varieties
- KJBS—Song Hits; Barcarole
- KGCC—Records; 9:15, Songs
- KQW—Tuneful Topics; Congoin
- KGDM—Records; 9:15, Talk
- KOL—9:15, Prudence Penny
- KVI—9:15, "The Gumps"
- *KFRG & network—Voice of Experience to 9:15
- KFRG—9:15, Congoin Dance Music
- KJR—9:15, Early Echoes
- KNX—Organ; Elec. Trans.
- KECA—Recordings
- KFSD—9:15, Good Cheer
- KGB—9:15, The Gumps
- KSL—9:15, The Gumps

9:30 to 10:00 A. M.

- KPO & network—The New World, educational talks
- KGO—Improve Your Home; Alvino Rey, guitarist
- KYA—Lovers Lane; Waltz Time
- KTAB—Health Talk
- KLX—Clinic of the Air
- KROW—Diet and Health
- KJBS—Visiting Faye Ward
- KGCC—Morning Melodies
- KQW—Faye Ward
- KGDM—News; Records
- *KFRG & netwk—Dick Messner's Orchestra
- KVI—English Lesson; Mystic Melodies
- KOL—9:45, Beautiful Melodies
- KHQ—Wait & Marian; Tull & Gibbs
- KQW—Pianist; Modern Homemaker
- KJR—News; Black and White Moods
- KFI—Hawaiians; 9:45, News
- KHJ—Press-Radio News to 9:35
- KNX—Amagon Program; 9:45, News
- KGB—News to 9:35
- KFSD—Stock Reports to 9:45

10:00 to 10:30 A. M.

- KGO & netwk—Press-Radio News; 10:05, Mickey Gillette's Music
- KPO—Golden State Menu Fashions; 10:15, News Reporter
- KYA—Columbia on Parade; 10:15, Organ Recital
- KTAB—News; Old Bachelor; Bargains
- KLX—Clinic; Stocks; News
- KROW—Rhythm Revue
- KJBS—News; 10:05, Organ
- KGCC—Cal King
- KQW—News; Popular Orchestra
- KGDM—Recordings
- KJR—Home Makers; Music
- KOMO—Jack and Jill to 10:15
- *KFRG & network—Just Plain Bill
- KFRG—10:15, Women's Home Forum
- KOL—10:15, Morning Melodies
- KOIN—10:15, Air Shopping
- KVI—10:15, Pioneer Sons
- KNX—Eddie Albright's Family
- KECA—Recordings
- KGB—10:15, Organ Recital
- KOA—10:15, Marietta Vasconcelles
- KSL—10:15, Recorded Program

10:30 to 11:00 A. M.

- KPO & network—Woman's Magazine of the Air
- KGO—Hum & Strum, harmony team; 10:45, Music Guild
- KYA—Organ Concert
- KTAB—Health Talk; Shorty Burke
- KLX—International Klugee
- KROW—Concert
- KJBS—Orchestra; For the Ladies
- KGCC—Hits of Today
- KQW—Aunt Sammy; 10:45, Music
- KGDM—Records; Health Talk
- *KFRG & network—University of California Program; 10:45, Pat Kennedy and Kassel's Orchestra
- KOL—Sue Allen, shopping
- KJR—Club Minutes; serenader
- KNX—M. Holmes; Rhythm Encores
- KECA—Recordings
- KFSD—10:50, Studio Program
- KOA—Ida Allen; Produce Reports
- KSL—Organ; Orchestra

11:00 to 11:30 A. M.

- KPO & network—Woman's Magazine of the Air
- KGO—Music Guild
- KYA—Organ; Unique Program
- KTAB—Examiner; Fashions; Beauty Facts; Rhythm
- KLX—Records; Notes in Rhyme
- KROW—Health Talk; Spotlight
- KJBS—Popular Hits; Records
- KGCC—Milady's Date Book; 11:15, Organalties
- KGDM—Organ Recital
- KQW—Light Classics
- *KFRG & network—Little French Princess; 11:15, Helen Trent
- KVI—The Observer; Melodies
- KOL—Garden Talk; News
- KOIN—Art Kirkham
- KJR—Rhythm Rulers
- KNX—Organ Recital
- KECA—French Lesson; Records
- KGB—Recordings

11:30 to 12:00 Noon

- KPO & network—Calif. Fed. of Women's Clubs; 11:45, Vic & Sade
- KGO—Smackout; Marion and Jim Jordan; 11:45, Agricultural Bulletin
- KYA—Fashions; Snapshots
- KTAB—Blue Moments; News
- KLX—Anita & Orsco; 11:45, Castles in Music
- KROW—Latin-American Program
- KJBS—Dance Orchestra
- KGCC—Requests
- KQW—Variety and Theatre News
- KGDM—Organ Recital

*KFRC & network—Amer. School of the Air
KHQ—Organ Recital
KJR—Measured Steps
KGW—Eddie King to 11:45
KFI—Fashion Tour to 11:45
KNX—Musical; 11:45. Talk
KECA—11:45, Records
KFSD—Smiling Young Man; Studio

12:00 to 12:30 P. M.

●KPO & network—Vocational Agriculture; 12:15, Farm & Home
KGO—Radio Guild, dramatic sketch
KYA—Scriptures; 12:03. Concert
KTAB—Talk; Agricultural Period
KLX—Dance Music
KROW—Latin American Program
KJBS—Postmaster McCarthy; Accordionist
KGGC—Recruit Hour
KQW—Popular Program
KGDGM—Lorelie Strings; Records
*KFRC & network—Your Hostess—Cobina Wright
KOL—The Carnival Hour
KVI—Mkt. Specials; Headlines
KOIN—Amie Brunn to 12:15
KOMO—12:15, Harp Melodies
KGW—Music; 12:15, Meier & Frank
KHQ—Planist; 12:15, Bus. & Pleas.
KJR—Tonic Tunes; Grain Reports
KNX—News; 12:15, Congo
KECA—12:15, News Release
KHJ—Better Business Bur. to 12:15
KSL—Broadcasters Review

12:30 to 1:00 P. M.

●KPO & network—Western Farm and Home Hour
KGO—Radio Guild
KYA—Noonday Concert
KTAB—Echoes of Portugal
KLX—Don Brose; Music
KROW—California Farm Hr.; Music
KJBS—Dance Orchestra
KGGC—Mountain Music
KQW—Weather and Market Reports
KGDGM—Recordings
*KFRC & network—Your Hostess
KOL—The Carnival Hour
KGW—News; 12:45, Violinist
KHQ—Stepping Along; Studio
KVI—News & Comment to 12:45
KGW—Dr. Semler; 12:45, Studio
KOMO—Farm Talk; Cowboy Joe
KNX—Concert Group
KECA—Recordings

1:00 to 1:30 P. M.

●KPO & network—Betty & Bob; 1:15, East & Dumke, comedy duo
KGO—Financial Flashes; News; 1:15, Ann Warner's Chats
KYA—Hawaiians
KTAB—Radio Frolic, Geo. Taylor
KLX—Records; 1:15, Martha Lee
KROW—Concert Melodies
KJBS—Stocks; Records; World Affairs
KQW—Friendly Hour
KGDGM—Records; The World Today
*KFRC & network—America's Little House; 1:15, Carlille & London
KOL—Johnnie Walker's Scrapbook
KOL—1:15, Julie Day
KGW—1:15, Dental Clinic
KOMO—1:15, Tea Time Tales
KHQ—1:15, Sylvia Gray
KJR—Headliners to 1:15
KFI—1:15, Glen Rice and Beverly Hillbillies
KNX—Pontrelli's Orchestra
KECA—Records to 1:15
KFSD—Studio Program to 1:15
KGB—1:15, Stocks; Farm Flashes
KSL—1:15, Payroll Builder

1:30 to 2:00 P. M.

●KPO & network—Oxydol's Own Ma Perkins; 1:45, Dreams Come True, Barry McKinley, baritone
KGO—Ann Warner's Chats; 1:45, Robert Pitner, tenor

KYA—Symphony Concert
KTAB—Jean Kent
KROW—Oakland Public Schools; Oklahoma Ramblers
KLX—Popular Concert
KJBS—Concert Recordings
KQW—Afternoon Concert
KGDGM—The World Today
KFRC—Stocks; Christian Sci. News
*KFRC & network—1:45, U. S. Marine Band
KOL—1:45, Consumers Facts
KOIN—Book of Life
KJR—Renovize; The Sun Dial
KNX—Pontrelli's Orchestra
KHJ—Dow Jones' Reports; 1:45, Nolan and Sherr
KFSD—Old Time Program

2:00 to 2:30 P. M.

●KPO & network—Al Pearce and His Gang
KGO—Sam Moore, guitarist; 2:15, Jackie Heller, tenor
KYA—Symphony Concert
KTAB—Globe Trotter; Romancin'
KLX—Lost & Found; 2:05, Records
KROW—Dance Matinee
KJBS—Barrister's Club; Tunes
KGDGM—Records; News
KQW—Dance Matinee
*KFRC & network—Happy-Go-Lucky Hour
KJR—Salon Hour, recorded
KNX—The Bookworm
KECA—Classic Hour, records
KSL—Men of Note; Dental Clinic
KOA—Huffman Reporter; Talk; 2:15, Rowdy Wright

2:30 to 3:00 P. M.

●KPO & network—Al Pearce Gang
KGO—Pair of Pianos
KYA—Lost & Found; Modern Notes
KTAB—Talk; 3-4 Time
KLX—Records; 2:35, Stocks; 2:40, Opportunity
KROW—Dance Matinee
KJBS—Events of Interest; Records
KGDGM—The Romancers
KQW—Dance Matinee
*KFRC & network—Happy-Go-Lucky Hour
KJR—Salon Hour
KECA—Classic Hour, records
KNX—Foreign Recordings
KFSD—2:45, Studio Program
KSL—Organ Interlude to 2:45
KOA—Sizzlers; Happy Jack

3:00 to 3:30 P. M.

●KPO & network—Langendorf Pictorial; 3:15, Mickey Gillette's Music
KGO—United States Army Band
KYA—P. T. A. Talk; Better Business Talk
KTAB—Bulletin; Chinese News
KLX—Opportunity Hour
KROW—Fay Lanphier; Merry-Go-Round
KJBS—Orchestra; 3:15, Songs of Hawaii
KQW—Stock Reports; Music
KGDGM—Recordings
*KFRC & network—Feminine Fancies
KJR—Easy Chair; Enchanted Islands
KGW—Concert Trio
KHQ—Hostess Hints; Club Bulletin
KOL—P. T. A. Program
KNX—Concert Orchestra
KECA—Alexander Bevan; Records
KSL—Songs of Long Ago; Junior Hour
KOA—3:15, University of Denver

3:30 to 4:00 P. M.

●KPO & network—Mickey Gillette's Music
KGO—Family Cook Book; 3:45, Singing Strings
KTAB—Royal Sophistication; Preview
KYA—Art Lecture; 3:45, Community Chest Question Box
KLX—Records; 3:45, Musical Jigsaw

KROW—Merry-Go-Round; Records
KJBS—Songs of Hawaii; Melodies
KGDGM—Organ
KQW—Variety Program
*KFRC & network—Frank Castle's Matinee
KHQ—3:45, Beauty Talk
KOL—Harriet Linkins; Studio
KOIN—Newspaper of the Air
KOMA—String Trio
KFI—Ann Warner's Chats
KHJ—Stimulating Soothers to 3:45
KNX—Fletcher Wiley
KGB—3:55, Along the Airways
KSL—Junior Hour; Records; News
KOA—3:45, Microphone News

4:00 to 4:30 P. M.

●KGO & network—Ray Perkins; Oriental Gardens Orchestra
KPO—Master Library
KYA—Old Songs; Tea Dance
KTAB—'Jewish Date Book'; Bay Meadows Feature Race
KLX—Records; Bro. Bob's Club
KROW—Waltz Time; Records
KJBS—Melodies of the Moment
KGDGM—Gilmore Oil Program
KQW—Star Reporter; Recordings
*KFRC & network—Dan Russo's Orchestra; 4:15, Univ. of the Air
KOIN—Newspaper of the Air
KGW—Friendly Chat
KHQ—4:15, News Album
KJR—Goodwill Program; Records
KNX—Haven of Rest
KECA—Library Talk; Records
KSL—Broadcasters' Review
KOA—Comedy Capers; Stamp Club

4:30 to 5:00 P. M.

●KGO & network—Armand Girard, basso; 4:45, The Big Top
KPO—Master Library; News Flashes
KYA—Tea Dance Parade
KTAB—Jack Hall and Artists
KLX—Bro. Bob's Club; Health School
KROW—Lee Davis' Gang
KJBS—Recordings to 4:45
KQW—Story Time; 4:45, Songs
KGDGM—Ernie Cruz; Records
*KFRC & network—Bob Allen, pianist; 4:45, Between the Bookends
KVI—Santa Claus to 4:45
KOIN—Hollywood Reporter; Toyland Express
KHQ—N. W. on Parade
KJR—Snapshots
KOMO—4:45, Moments of Melody
KQW—Sam Gordon; Studio Prog.
KFI—Organ Recital
KNX—Advisor; U. S. C.
KSL—Adventures of Robin Hood; 4:45, Orphan Annie

5:00 to 5:30 P. M.

●KPO & network—Jan Garber's Supper Club
KGO—Art Revue; 5:15, Edna Fischer pianist
KYA—Children's Hour
KTAB—Lauretta La Marr; Santa Claus
KLX—Planist; Bill, Mack & Jimmie
KROW—Memory Lane; Recordings
KGGC—Dancing Echoes; Frolic
KQW—Sunshine League
*KFRC & network—Carson Robinson's Buckaroos; 5:15, Billy Bachelor
KJR—Orange and Blackie; Music
KNX—Fire Dept.; Sunset Serenade
KFOX—Playtime Lady; Records
KECA—How Songs Grew; Story Teller
KFSD—Studio Program
KSL—5:15, Tarzan

5:30 to 6:00 P. M.

●KPO & network—Carefree Carnival
KGO—Ivory Stamp Club; 5:45, Orphan Annie, Elec. Trans.
KYA—Metropolitans; 5:45, Campbell Corner
KTAB—Dr. Thompson, talk

KLX—Covered Wagon Jubilee
 KROW—Eating Your Way to Health
 KGW—Popular Orchestra
 KGGC—Dr. King; Irish Gems
 *KFRC & network—Atwater Kent Program
 KGW—Ivory Soap to 5:45
 KJR—Tarzan; 5:45, Orphan Annie
 KOMO—Ivory Stamp Club
 KHQ—Ivory Stamp Club
 KFI—Ivory Stamp Club; Charlie Wellman, songs, Helen Hill pianist
 KNX—Son of Fire; Orphan Annie
 KFOX—Theatre News; Songs
 KFSD—Studio; Farley's Rangers
 KOA—Pick and Pat

6:00 to 6:30 P. M.

*KPO & network—Sinclair Greater Minstrels with Gene Arnold
 KGO—Music Box
 KYA—Man About Town; 6:15, Orchestra
 KTAB—News; Concert
 KLX—Arlon Trio
 KROW—News; Rhythm Kings
 KGGC—Dinner Dance
 KGW—Dept. of Agriculture; Records
 *KFRC & network—Chesterfield Prog.; Rosa Ponselle and Orch.
 KGW—Traffic Talk to 6:15
 KJR—News; Romance Time
 KHQ—Singing Secretary; Melodies
 KOMO—30 Minutes of Music
 KFVB—News; Mysteries; Organ
 KNX—News; 6:15, Concert Group
 KFOX—News; Trio, Al & Molly
 KECA—Board of Education; News

6:30 to 7:00 P. M.

*KPO & network—Colgate House Party
 KGO—Safety First; 6:45, Air Adventures of Jimmy Allen
 KYA—Cy Trobber's Orchestra
 KTAB—Sports; Affairs of Leo
 KLX—Arlon Trio
 KROW—Ne'er Do Well
 KGGC—Theatre of the Air; Dance
 KGW—Market Reports; Thorobred Quarter Hour
 *KFRC & network—Marshall Sohl, tenor
 KOIN—Merry Gentleman; Sports
 KVI—News; Vocalist
 KOL—Chas. A. Reynolds to 6:45
 KJR—Romance Time; Jimmie Allen
 KNX—Concert; 6:45, Jimmie Allen
 KFVB—Organ; 6:45, Jimmie Allen
 KECA—Organ and Vocalist
 KFOX—School Kids; Jimmie Allen
 KSL—The Big Show

7:00 to 7:30 P. M.

*KPO & network—Carnation Contented Program
 KGO—Beaux Arts Trio
 KYA—Sports; Tales of the Turr
 KTAB—Italian News; Sport of Kings
 KROW—C. W. Hammond; L'Italia News
 KLX—News; 7:15, Lovable Liars
 KGGC—Song at Twilight; Records
 KGW—Weather; Voice of Portugal
 *KFRC & network—Wayne King's Orchestra
 KJR—Concert; Dollars and Sense
 KNX—Watanabe & Archie; Rajput
 KFVB—Talk; Pioneer Sons
 KECA—Organ and Vocalist
 KFOX—Eb and Zeb; 7:15, Bobby & Betty
 KFSD—Studio; Sonny and Buddy

7:30 to 8:00 P. M.

*KPO & network—Memory Lane
 KGO—Comedy Stars of Hollywood; 7:45, Cliff Nazarro, songs
 KYA—Cowboys; Louise Taber
 KTAB—Socialist Labor Party; Revolving Stage
 KLX—Silver Strains; Clinic of the Air

KROW—L'Italia Echoes of Italy
 KQW—Italian Radio Theatre
 KGGC—Bob May; Recordings
 KFRC—Raymond Marlowe, tenor
 *KFRC & network—7:45, Unsolved Mysteries
 KOL—Speaker Stevenson to 7:45
 KVI—Dr. Mellor to 7:45
 KOIN—Jimmy Allen to 7:45
 KJR—Knights of Note
 KNX—In-News; King Cowboy
 KFVB—Syncopators
 KFOX—Boy Detective; Vagabonds
 KECA—Records; 7:45, Law Talk
 KGB—James O'Connor to 7:45
 KSL—Crazy Crystals; Alka Seltzer

8:00 to 8:30 P. M.

*KPO & network—Amos 'n' Andy; 8:15, Red Davis, dramatic series
 KGO—Stanford University Program; 8:15, Ricardo and his violin
 KYA—Drama; Amateur Party
 KTAB—Itchy & Scratchy; Ballads
 KLX—Clinic of the Air
 KGGC—Spanish-American Program
 KROW—Italy; Watch Tower
 KQW—Historic Santa Clara Valley
 *KFRC & network—Myrt & Marge; 8:15, Edwin C. Hill
 KJR—Music; Carefree Capers
 KNX—June Irwin; Music
 KFVB—Jack Joy's Orchestra
 KECA—Vocalist; 8:15, Philosopher and Country Jane
 KFOX—Organ and Piano; Trio
 KFSD—Adventures of Jimmie Allen

8:30 to 9:00 P. M.

*KPO & network—Voice of Firestone Garden Concert; Orchestra with guest artists and chorus
 KGO—Drama Hour
 KYA—Amateur Party
 KTAB—Butchers Union; Vocalist
 KLX—All Star Sports; Tonic Tunes
 KROW—Happy Harmonies; News
 KGGC—Concert; Timely Tunes
 KQW—Opera
 *KFRC & network—Blue Monday Jamboree
 KJR—Highlight Hour
 KFVB—Drama
 KNX—Songs; Talk
 KECA—SERA Orchestra
 KFOX—Goodyear Melodeer; Cecil & Sally

9:00 to 9:30 P. M.

*KPO & network—Shell Show; Rush Hughes, master of ceremonies; guest artists; Yahbut & Cheerly
 KGO—Guy Lombardo's Orchestra
 KYA—Party; Nat'l Defense
 KTAB—Nightherders
 KLX—Krausmeyer & Cohen; Music
 KROW—Powder River Wranglers
 KQW—Opera
 KGGC—News; Wyoming Cowboys
 *KFRC & network—Blue Monday Jamboree
 KJR—News; Musical Scrapbook
 KNX—News; Ed. McConell
 KFVB—Nick Stewart's Orchestra
 KECA—9:15, Fishing & Hunting Talk
 KFOX—Beverly Hillbillies
 KFSD—Furmbilt Program; Marie Viratelle Kriete

9:30 to 10:00 P. M.

*KPO & network—Shell Show
 KGO—Art Kassel's Orchestra
 KYA—Concert Orchestra; 9:45, News 9:55, Woman Investor
 KTAB—News; Morgan Players
 KLX—News; Musical Headlines
 KROW—St. Mary's College Prod.
 KGGC—Dance Tunes; Records
 KQW—Opera
 *KFRC & network—Claude Hopkins' Orchestra
 KOL—Talk; News; Editorial
 KVI—News Flashes to 9:45

KJR—The Purple Ray; C. of C.
 KNX—The Crocketts
 KFVB—Slumbertime
 KECA—Song Recital
 KHJ—"Witches Tales"
 KFOX—Beverly Hill Billies
 KFSD—Marie Viratelle Kriete
 KSL—Auerbach Program; 9:45, Milt Taggart's Orchestra

10:00 to 10:30 P. M.

*KPO & network—The Richfield Reporter; 10:15, Clef Dwellers
 KGO—Nanette La Salle, contralto; News; 10:20, Williams-Walsh Orch.
 KYA—Concert Orchestra
 KTAB—Drama
 KLX—Dance Music
 KROW—Royal Hawaiians
 KGGC—Ten o'Clock Review
 KFRC—News; Lifebuoy Soap; To be announced
 KOL—Editorial; Sunshine Hour
 KVI—Dance Orchestra
 KOIN—Journal Show
 KJR—Jack Mills' Orchestra
 KHJ—News Items; 10:10, Music
 KNX—The Crocketts
 KFVB—News; Organ Recital
 KECA—Musical Celebrities
 KFOX—News; Organ
 KGB—News; Orchestra
 KOA—10:15, Studio Program
 KSL—Congoing; The KSL Players

10:30 to 11:00 P. M.

*KPO & network—Blue Moonlight; 10:55, News
 KGO—Williams-Walsh Orchestra
 KYA—Concert Orchestra
 KTAB—Morgan Players Drama
 KLX—Dance Records
 KROW—Quiet Harmonies
 KGGC—Merry Melodies
 *KFRC & network—To be announced
 KLX—Dance Music
 KOMO—Moonlight Melodies
 KGW—10:55, Olympians
 KOIN—Kaballeros; Columbians
 KJR—10:55, Memory's Garden
 KNX—Pontrell's Orchestra
 KHJ—The Islanders
 KFOX—Tex Howard's Orchestra
 KFVB—Dance Orchestra
 KECA—Recordings

11:00 to 11:30 P. M.

*KPO & network—Ted Fio-Rito's Orchestra
 KGO—Organ Concert
 KYA—Dance Orchestra
 KTAB—Organ Concert
 KROW—Dance of the Hour
 *KFRC & network—Lionel Hampton's Orchestra
 KOMO—Dance Orchestra
 KNX—Pontrell's Orchestra
 KFVB—Nick Stuart's Orchestra
 KFOX—Nick Stuart's Orchestra

11:30 to 12:00 Midnight

*KGO & network—Jimmy Grier's Orchestra
 KPO—Organ Concert
 KYA—Organ Recital
 KTAB—Dancepations
 KROW—Dance Music
 KGD—12, Records to 6
 *KFRC & network—Midnight Moods
 KLX—Dance Music
 KOMO—Biltmore Orchestra
 KJR—Reflections of Romance
 KFVB—Dance Orchestra
 KFOX—Freddie Carter's Orchestra

12:00 to 1 A. M.

KTAB—DX Program
 KROW—Midnight Vagabond
 KGB—Records
 KJBS—Owl Program

1:00 A. M. to 7:00 A. M.

KJBS—12:01, Owl Program to 7 a.m.

TUESDAY Programs

Dec. 18, 1934

7:30 to 8:00 A. M.

- KPO & network—Financial Service; 7:45, To be announced
- KGO—Morning Parade
- KYA—Musical Clock
- KTAB—Texans
- KROW—Commuters Clock
- KJBS—Alarm Klok Club
- KQW—The Breakfast Hour
- KGDM—Gilmore Oil
- KFRC—Seal Rocks Broadcast
- KOL—Organ Music
- KVI—Talk; 7:35, Varieties
- KGW—Piano to 7:45
- KOMO—7:45, Emil Hansen
- KJR—Market Quotations; Records
- KHJ—Recordings and Stocks
- KNX—Bill Sharples Breakfast Club
- KFI—N. Y. Stocks to 7:45
- KECA—Morning Bible Fellowship; 7:45, Records
- KFSD—7:45, Studio Program
- KGB—Stocks; Records
- KSL—Advertisers Review; Music

8:00 to 8:30 A. M.

- KGO & network—Johnny O'Brien
- KGO—8:15, Organ Concert
- KPO—Songs by the Kitchen Sink
- KPO & network—8:15, Your Child
- KYA—Christian Science Reading; 8:15, Mr. and Mrs. Reader
- KTAB—Shipping News; Santa Claus
- KLX—Records; N. Y. Stocks
- KROW—Commuters Clock
- KJBS—Auburn Airs; Varieties
- KQW—Morning Melodies; Varieties
- KGDM—Serenaders; Records
- KFRC—Recordings
- KFRC & network—8:15, Alexander Semmler, pianist
- KOL—8:15, Ceil and Sally
- KOIN—Rhythms to 8:15
- KHQ—Studio Programs
- KOMO—Morning Reveries
- KVI—Recordings; Market Specials
- KNX—Gene Autrey; Help for the Day
- KFI—Church Quarter Hour to 8:15
- KECA—Records to 8:15
- KSL—Studio Ensemble; 8:15, Mary and John
- KOA—Galaxy of Stars to 8:15

8:30 to 9:00 A. M.

- KPO & network—U. S. Marine Band
- KGO—Eaux Arts Trio
- KYA—Concert
- KTAB—Radio Shoppers' Digest
- KLX—Covered Wagon Jubilee
- KROW—Novelty Review
- KJBS—Dance Melodies
- KQW—Morning Concert
- KGDM—Records; Health Talk
- KHQ—Crazy Wells to 8:45
- KOMO—Melodies; Mary's Garden
- KFRC & network—Hollywood Country Church
- KNX—Song Bag
- KFI—Ballads; Helpful Hints
- KECA—8:45, Records
- KSL—Cal-O-Dine; Mary & Bennie

9:00 to 9:30 A. M.

- KGO & network—U. S. Marine Band
- KPO—Barbara Lee; 9:15, Edna Fischer, pianist
- KYA—Concert; 9:15, Pru. Penny
- KTAB—Hour of Prayer
- KLX—Shopping List
- KROW—Beauty & Romance; Varieties
- KJBS—Kings Men; Bargains
- KGCC—Records; 9:15, Songs
- KQW—Tuneful Topics; Congoin
- KGDM—Cowboy; 9:15, Personalities
- KFRC & network—Voice of Experience to 9:15
- KFRC—9:15, Congoin Co.



LUTHER PUTNAM

KGCC—Staff Artist

- KVI—9:15, The Gumps
- KOL—9:15, Prudence Penny
- KHO—Dessert Hotel; Home Comfort
- KGW—Edna Jacks, pianist, to 9:15
- KFI—Hawaiian Group; Jean Abbey
- KNX—Organ; Lotus Land
- KFSD—9:15, Good Cheer
- KGB—9:15, The Gumps
- KSL—9:15, The Gumps

9:30 to 10:00 A. M.

- KPO & network—Martha Meade Society
- KPO—9:45, Organ Concert
- KGO—Improve Your Home
- KGO & network—9:45, Three of a Kind
- KYA—Lover's Lane Waltz Time
- KTAB—Health Talk
- KLX—Clinic of the Air
- KROW—Diet and Health
- KGCC—Records
- KQW—Musical Program
- KGDM—News; Records
- KFRC & network—Arthur Warren & Orchestra
- KVI—Dr. Burns; Mystic Melodies
- KOL—9:45, Beautiful Melodies
- KHQ—9:45, Tull & Gibbs
- KJR—9:45, Gardner Nursery Prog.
- KGW—9:45, Cooking School
- KFI—9:45, News Release
- KNX—Musical Jigsaws; 9:45, News
- KECA—Records to 9:45
- KFSD—Stock Reports to 9:45
- KGB—News to 9:35
- KSL—Jennie Lee to 9:45

10:00 to 10:30 A. M.

- KGO & network—Press-Radio News; 10:05, Army Band Concert
- KPO—As Woman to Woman; 10:15, Cliff Nazarro, vocalist
- KYA—Columbia on Parade; 10:15, The Novelty Shop
- KTAB—News; Bachelor; Bargains
- KLX—Clinic; Stocks; News
- KROW—Rhythm Revue
- KJBS—News; Orch.; Melody Parade
- KGCC—Cal King
- KQW—News; Headline Memories
- KGDM—So This Is Hollywood; Bondons

- KFRC & network—Just Plain Bill
- KFRC—10:15, Home Forum
- KVI—10:15, Sons of the Pioneers
- KOL—10:15, Morning Melodies
- KOIN—10:15, Air Shopping
- KJR—Home Makers; Music Shop
- KFI—Al Gayle, accordionist; 10:15, Hollywood Looking Glass
- KNX—Eddie Albright's Family
- KSL—10:15, Elec. Trans.

10:30 to 11:00 A. M.

- KPO & network—Woman's Magazine of the Air
- KGO—Jerry Brannon, songs; 10:45, Ranch Boys, cowboy songs
- KYA—Organ Concert
- KTAB—Health Talk; Shorty Burke
- KLX—International Kitchen
- KROW—Morning Concert
- KJBS—Organ; 10:45, Melodies
- KQW—Aunt Sammy; 10:45, Music
- KGCC—Hits of Today
- KGDM—The Bondons; Talk
- KFRC & network—Esther Velas Ensemble; Art Kassel's Orch.
- KOIN—Shopping to 10:45
- KVI—Amusement Tips to 10:45
- KJR—Club Minutes; Uncle Hank
- KNX—Mary Holmes; 10:45, Records
- KECA—Song Recital
- KOA—10:45, Livestock & Produce

11:00 to 11:30 A. M.

- KPO & network—Woman's Magazine of the Air
- KGO—Crosscuts Log o' the Day
- KYA—Organ Concert
- KTAB—Bargains; Fashions; Rhythms
- KLX—Anita & Orsco; Tonic Tunes
- KROW—Health Talk; Spotlight
- KJBS—Orch.; 11:15, Medical Talk
- KGCC—Milady's Date Book; 11:15, Waltz Time
- KQW—Light Classics
- KGDM—Organ
- KOL—Garden Talk; 11:15, News
- KFRC & network—Little French Princess; 11:15, Helen Trent
- KFRC—Women's Home Forum
- KJR—Rhythm Rulers
- KVI—Observer; Music
- KOIN—Art Kirkham
- KNX—Marshall Grant, organist
- KECA—Records; Medical Talk
- KGB—To the Ladies

11:30 to 12:00 Noon

- KPO & network—Smackout; 11:45, Vic and Sade
- KGO—William Cowles, pianist
- 11:45, Agricultural Bulletin
- KYA—Dance Time; 11:45, Snapshots
- KTAB—Four-Four Time; News
- KLX—Beauty Salon; 11:45, Musical Scrapbook
- KROW—Latin-American Program
- KJBS—Dance Orchestra
- KGCC—Request Hour
- KQW—Accordion Capers; News
- KGDM—Organ
- KHQ—Organ Concert
- KFRC & network—American School of the Air
- KOIN—Art Kirkham
- KJR—Irish Minstrel; Records
- KFI—Fashion Tour to 11:45
- KNX—Spice of Life; Ionizer Talk
- KECA—11:45, Music Talk
- KFSD—11:45, Studio Program

12:00 to 12:30 P. M.

- KGO & network—New Jersey College for Women Choir
- KGO—12:15, Financial Flashes; 12:20, Mickey Gillette's Music
- KPO—News Reporter
- KPO & network—12:15, Western Warm and Home Hour
- KYA—Scriptures; Noonday Concert

KTAB—Talk; Agricultural Period
 KLX—Dance Music
 KROW—Latin-American Program
 KJBS—Song Hits; 12:15, Records
 KGGC—Request Hour
 KGW—Popular Orchestra
 KGDM—Road Report; Dance Band
 *KFRC & network—Stockholm Sym-
 phony Orch. from Sweden
 KOL—Carnival Hour
 KVI—12:15, Front Page Headlines
 KOIN—Johnnie Walker; Amie Brun
 KOMO—12:15, Viennese Vagabonds
 KJR—Music; Grain Report to 12:15
 KHQ—12:15, Chamber of Com-
 merce Luncheon
 KGW—12:15, Meier & Frank
 KFI—Market Reports to 12:15
 KNX—News; 12:15, Congo
 KECA—12:15, News Release
 KSL—Swedish Radio Service Orch.
 KOA—Charlie Davis Orchestra

12:30 to 1:00 P. M.

•KPO & network—Western Farm
 and Home Hour
 KGO—Mickey Gillette's Music
 KYA—Noonday Concert
 KTAB—Echoes of Portugal
 KLX—Don Brose; Musical Auction
 KROW—Callif. Home Hour; Records
 KJBS—Dance Matinee
 KGGC—Mountain Music; Oddities
 KGDM—Recordings
 KQW—Weather; Market Reports
 *KFRC & netwk—Symphony Orch.
 KOL—Carnival Hour
 KOMO—12:45, Cowboy Joe
 KGW—News; Abe Bercovitz, violin
 KHQ—Chamber of Commerce
 KNX—Concert Group
 KECA—Concert Group
 KSL—Soloists and Chorus

1:00 to 1:30 P. M.

•KPO & network—Betty and Bob,
 1:15, East and Dunke
 KGO—Vocalist; 1:15, Ann Warner
 KYA—Women's Institute of the Air
 KTAB—Radio Frolic
 KLX—Records; Martha Lee
 KROW—Concert Melodies
 KJBS—Stock Reports; Song Hits
 KQW—Friendly Hour
 KGDM—Recordings; Organ
 *KFRC & network—Visiting Amer-
 ica's "Little House"
 KFRC—1:15, Health Society Talk
 KOL—1:15, Julie Day
 KOIN—1:15, Poetic Strings
 KHQ—1:15, Sylvia Gray
 KOMO—1:15, Tea Time Tales
 KQW—Headliners to 1:15
 KGW—1:15, Dental Clinic
 KFI—1:15, Beverly Hillbillies
 KNX—Pontrelli's Orchestra
 KECA—Recordings to 1:15
 KFSD—Studio Program to 1:15
 KGB—1:15, Stocks; Farm Flashes
 KSL—Payroll Builder
 KOA—1:15, Crazy Hotel Orchestra

1:30 to 2:00 P. M.

•KPO & netwk—Oxydol's Own Ma
 Perkins; 1:45, Betty Marlowe, talk
 KGO—Ann Warner's Chats; Nanette
 La Salle, contralto
 KYA—Piano Concert
 KTAB—Jean Kent, economics
 KLX—Popular Concert
 KROW—Spanish Serenade; 1:45,
 Oklahoma Ramblers
 KJBS—Dance Orchestra
 KQW—Afternoon Concert
 *KFRC & network—Educational
 Feature to 1:45
 KFRC—1:45, Stocks; Christian Sel-
 ection News
 KGDM—Organ; Recordings
 KOL—Educational Feature
 KOIN—Book of Life
 KJR—Renovize; Musical Headlines
 KEX—Grain Reports; Records
 KNX—Pontrelli's Orchestra
 KFSD—Old Time Program

2:00 to 2:30 P. M.

•KPO & network—Al Pearce and
 His Gang
 KGO—Meredit Willson's Orchestra
 KYA—Don Valdemar's Orchestra
 KTAB—Globe Trotter; Romancin'
 KLX—Recordings
 KROW—Dance Matinee
 KJBS—Better Business Talk; 2:15,
 Tang, Orchestra
 *KFRC & netwk—To be announced
 KQW—Dance Matinee
 KGDM—Serenader; News
 KJR—Salon Hour
 KEX—World Bookman; Music
 KNX—The Bookworm
 KECA—Classic Hour
 KSL—Orch.; 2:15, Dental Clinic
 KOA—Theatre Reporter; Orchestra

2:30 to 3:00 P. M.

•KPO & network—Al Pearce Gang
 KGO—Pair of Planos
 KYA—Modern Notes
 KTAB—Child Life; Records
 KLX—Records; 2:35, Stocks; 2:40,
 Records
 KROW—Dance Matinee
 KQW—Dance Matinee
 KJBS—Events of Interest; Records
 KGDM—The Romancers
 *KFRC & netwk—To be announced
 KJR—Salon Hour
 KEX—Music
 KNX—Recordings
 KECA—Classic Hour
 KFSD—2:45, Studio Program
 KSL—Milton Charles; 2:45, Minia-
 tures

3:00 to 3:30 P. M.

•KPO & netwk—Langendorf Pictor-
 ial; 3:15, Mickey Gillette's Music
 KGO—Xavier Cugat's Orchestra;
 3:15, Mid-Week Hymn Sing
 KYA—Band Concert
 KTAB—Notices; Chinese News
 KLX—Song Market; 3:15, Records
 KROW—Presenting Fay Lanphier;
 3:15, Merry-Go-Round
 KJBS—News; Records
 KQW—Stocks; 3:15, Variety
 KGDM—Ernie Cruz Program
 *KFRC & netwk—Feminine Fancies
 KJR—Operatic Gems
 KEX—Orchestra
 KGW—Crazy Crystals; Cellist
 KHQ—Business & Pleasure; Bulletin
 KNX—Concert Orchestra
 KECA—Recordings
 KSL—Pianist; 3:15, Junior Hour
 KOA—Orchestra

3:30 to 4:00 P. M.

•KPO & network—Mickey Gillette's
 Music
 KGO—Interlude; Dorothy Page, con-
 tralto; High & Low, vocal duo
 KYA—Drama
 KTAB—Sophistication; 3:45, Picture
 Talk
 KLX—Recordings
 KROW—Merry-Go-Round; Records
 KQW—Variety Program
 KJBS—Musical Comedy
 KGDM—Pacific Instrumentalists
 *KFRC & network—Frank Castle's
 Matinee; Correct English
 KOL—Harriet Lincks; Studio
 KOIN—Newspaper of the Air
 KHQ—King's Men; Beauty Talk
 KOMO—Birbaum's Bavarians
 KFI—Ann Warner's Chats
 KNX—Fletcher Wiley
 KGB—Along the Airways to 3:45
 KOA—3:45, Microphone News
 KSL—The Junior Hour; Records

4:00 to 4:30 P. M.

•KPO & network—King's Guard,
 quartet; 4:15, Hal Kemp's Orch.
 KGO—Novalettes
 KLX—Records; Bob's Club

KYA—Symphony Sketches; Tea
 Dance
 KTAB—Jewish Date Book; Bay
 Meadows Feature Race
 KROW—Waltz Time; Organ
 KJBS—Star Reporter; Orchestra
 KGDM—Gilmore Oil Program
 KQW—Star Reporter; Tunes
 *KFRC & network—Dan Russo's
 Orchestra; University of the Air
 KOIN—Newspaper of the Air
 KQW—Friendly Chat
 KHQ—4:15, News Album
 KJR—Tea Dansant
 KFI—Latvian Singers to 4:15
 KNX—Haven of Rest
 KECA—4:45, Recordings
 KSL—Town Crier
 KOA—4:15, Orchestra

4:30 to 5:00 P. M.

•KPO & network—You and Your
 Government
 KPO—4:45, News Reporter
 KGO—Dot Kay, contralto
 *KGO & netwk—4:45, The Big Top
 KYA—Tea Dance Parade
 KTAB—Keep Smiling Revue
 KLX—Bro. Bob's Club; Health School
 KROW—Lee Davis' Cowboys
 KJBS—Dance Orchestra
 KQW—Story Time; 4:45, Songs
 KGDM—Iron House
 *KFRC & network—Charlie Kent's
 Adlerikans; Between the Bookends
 KVI—Santa Claus to 4:45
 KOIN—Hollywood Reporter to 4:45
 KOL—4:45, Radio Pen Friend Club
 KOMO—Talk; Saxophone Melodies
 KFI—Organ Recital
 KNX—Personal Advisor, U.S.C.
 KSL—Town Crier; Orphan Annie

5:00 to 5:30 P. M.

•KPO & network—Beaux Arts Trio
 KGO—Back Stage Chatter; 5:15,
 Eileen Piggott, soprano
 KYA—Children's Hour
 KTAB—Laurette La Marr; Santa
 Claus
 KLX—Pianist; Bill, Mack & Jimmie
 KROW—Memory Lane; Ramona,
 Romero
 KGGC—Echoes; Studio Frolic
 KQW—Popular Concert
 KFRC—Son of Fire
 *KFRC & network—5:15, Billy
 Bachelor
 KOIN—Bob & Dolly
 KVI—"The Deerslayer" to 5:15
 KHQ—5:15, Donald Ayers Adventures
 KJR—Steamboat Bill; Records
 KNX—Serenade; Musical Headlines
 KFI—A. C. Gilbert to 5:15
 KFOX—Playtime Lady; Records
 KECA—5:15, Records
 KSL—Pulman Prog.; 5:15, Tarzan
 KOA—5:15, Story Behind the Claim

5:30 to 6:00 P. M.

•KGO & network—Chestor Rowell
 KGO—5:45, Orphan Annie (E. T.)
 KPO—Behind the Footlights
 *KPO & network—5:45, Ricardo &
 his violin
 KYA—Metropolitan; 5:45, Campbell
 KTAB—Health Talk
 KLX—Covered Wagon Jubilee
 KROW—Eating Your Way to Health
 KGGC—Talk; 5:45, Irish Gems
 KQW—Popular Orchestra
 KFRC—Sports to 5:45
 *KFRC & network—Chic Scoggin's
 Orchestra
 KOL—5:45, Ralph Horr, talk
 KOIN—5:45, Merry Men
 KJR—Once Upon a Time; Orphan
 Annie
 KVI—5:45, Hollywood News
 KOMO—Moments of Melody to 5:45
 KHQ—5:45, To be announced
 KNX—Songs; 5:45, Orphan Annie
 KFI—Your Pal Jimmy; Charlie Well-
 man & Helen Hill
 KECA—Word Detective to 5:45

KFOX—Theatre News; Records; Talk
KGB—Studio; 5:45, Robin Hood
KFSD—5:45, Farley's Rangers
KSL—5:45, Krausmeyer & Cohen
KOA—McMurtry Harmonists

6:00 to 6:30 P. M.

• KPO & network—Chiffon Jazz
KGO—Community Forum
KYA—Man About Town; Orchestra
KTAB—News; Organ Concert
KLX—Arion Trio
KROW—News; 6:15, Harmonies
KGGC—Dinner Dance Review
KQW—Department of Agriculture; 6:15, Popular Program
* KFRC & network—Bing Crosby & Boswell Sisters
KJR—News to 6:15
KOMO—Musical Mannequins
KGW—Musical Mannequins
KHG—Pick and Pat
KFWB—News; Mysteries; Organ
KNX—News; 6:15, Concert
KFI—6:15, Four Blackbirds
KECA—Children of All Lands; News
KFOX—News; Cheerio Boys; Al & Molly

6:30 to 7:00 P. M.

• KPO & network—Ed Wynn, the Texaco Fire Chief; Graham McNamee, Eddie Duchin's Orchestra
KGO—Harry Stanton, basso; 6:45, Air Adventures of Jimmy Allen
KYA—Orchestra
KTAB—Sport Page; Affairs of Leo
KLX—Arion Trio
KROW—Rhythm Kings; 6:45, Dr. G. Facci
KGGC—Theatre of the Air; Music
KQW—Market Reports; Thorobred Quarter Hour
* KFRC & network—Isham Jones' Orchestra for Chevrolet
KJR—Vindabolons; Jimmy Allen
KFOX—School Kids; Jimmy Allen
KFWB—Studio Whispers; Jim Allen
KNX—Dance; 6:45, Jimmy Allen
KECA—Wesley Tourtellotte, organ

7:00 to 7:30 P. M.

• KPO & netwk—Palmolive Beauty Box Theatre of the Air; Operetta, with Gladys Swarthout, mezzo-soprano; John Barclay; Nat Shilkret's Orchestra
KGO—Every Man's Palace
KYA—Ernie Smith's Sport Page; 7:15, Memory Strains
KTAB—Talk; 7:15, Sport of Kings
KLX—News; Song Souvenirs
KROW—C. W. Hammond; 7:15, L'Italia News
KGGC—Symphonette; Tango Time
KQW—Weather; Voice of Portugal
* KFRC & network—Camel Caravan
KJR—Theatre Observer; Concert
KECA—Recordings
KNX—Frank Watanabe; Music
KFWB—Ray de O'Fan; Hollywood Hilarities
KFOX—Eb & Zeb; Bobby & Betty

7:30 to 8:00 P. M.

• KPO & netwk—Palmolive Beauty Box Theatre
KGO—Redwood Reveries; Argentine Trio
KYA—Story Teller; Louise Taber
KTAB—Spanish Talent; Itchy and Scratchy
KLX—Merlyn Morse, tenor; 7:45, Spice of Life
KROW—French Symphony; American Magazine
KGGC—Jeanne Carole; 7:45, Records
KQW—Italian Radio Theatre
* KFRC & network—To be announced
KJL—Speaker Stevenson to 7:45
KOL—Jimmy Allen; Little Show
KVI—Dr. R. M. Mellor to 7:45
KJR—Old Songs; Silver Strains
KNX—The In-Laws; King Cowboy

KFWB—Mrs. Pasquale and Califs.
KFOX—Boy Detective; Vagabonds
KGB—Comedy Stars to 7:45
KSL—Ridge Roamers; Origin of Superstition

8:00 to 8:30 P. M.

• KPO & network—Amos 'n' Andy; 8:15, Voice of Romance
KGO—California State Chamber of Commerce Program; 8:15, College Days; Helen Troy and Frank Provo
KYA—Gypsies
KTAB—Itchy and Scratchy; London Fantasy
KLX—Manila Stringed Orchestra
KROW—Latin-American Program
KGGC—Spanish-American Program
KQW—Melody Round-Up
* KFRC & netwk—Myrt and Marge
KJRC—8:15, Beauty That Endures
KOL—8:15, Comedy Stars
KOIN—8:15, Comedy Stars
KVI—8:15, Souvenirs
KJR—Castles in Music; Phantasies
KNX—June Irwin; Adlerikans
KFI—8:15, Instrumental Program
KFWB—Welcome Lewis; 8:15, Orch.
KFOX—Garden Talks; Melodies
KECA—Recordings
KFSD—Jimmie Allen to 8:15
KGB—8:15, Oddities from Life
KSL—8:15, Mirth Parade

8:30 to 9:00 P. M.

• KPO & network—Leo Reisman's Orchestra
KGO—Neapolitan Echoes
KYA—Tom Coakley's Orchestra; 8:45, Leon Mojica's Orchestra
KTAB—London Fantasy; Vocalist
KLX—Sports; 8:45, Melody Palette
KROW—Italian Program
KGGC—Concert; 8:45, Timely Tunes
KQW—Melody Round-Up
* KFRC & netwk—Calling All Cars
KJRC—Merry Gentlemen to 8:45
KOL—The Merry Men to 8:45
KVI—Mr. Rex Roubush to 8:45
KJR—Waltz Dreams
KFWB—Pioneers' Sons; Orchestra
KNX—Forge of Freedom
KECA—Dr. Geo. Liebling, pianist
KFOX—Orchestra; Cecil & Sally
KSL—Auerbach; Bill Post, baritone

9:00 to 9:30 P. M.

• KPO & network—Ben Bernie's Orchestra
KGO—Ralph Kirbery; 9:05, Hotel Biltmore Orchestra
KYA—Radio Players
KTAB—Nevada Nighthanders
KLX—Old Gospel Hymns
KROW—Italian Program; Music of the Masters
KQW—Band Concert
KGGC—News; Wyoming Cowboys
* KFRC & netwk—Clyde Lucas' Orch
KOIN—Krausmeyer & Cohen to 9:15
KVI—Krausmeyer & Cohen; Arm-chair Traveler
KOL—Krausmeyer & Cohen; News; Editorial
KJR—News; Singers
KNX—News; 9:15, Music
KFWB—Orchestra; News
KFOX—Beverly Hillbillies
KECA—'Rhapsodies in Song'
KFSD—Lewis Popular Program
KSL—Orchestra; 9:15, Smoke Rings
KOA—Comedy Stars; Studio

9:30 to 10:00 P. M.

• KPO & netwk—Death Valley Days
KGO—Harry Sosnik's Orchestra
KYA—Players; News; Answer Man
KTAB—News; To be announced
KLX—News; California Rangers
KROW—Master's Music; Ramona
KGGC—Recordings
KQW—Hits of the Past

* KFRC & network—The University Explorer
KOL—Boxing Bouts
KOIN—Fights
KVI—News; Piano Program
KJR—Pick and Pat
KNX—Pick and Pat (E. T.)
KFWB—Boxing Bouts
KFOX—Boxing Bouts
KECA—Recordings
KSL—Smoke Rings; Orchestra
KOA—Cosmopolitan Orchestra

10:00 to 10:30 P. M.

• KPO & network—Richfield Reporter; 10:15, Tom Coakley's Orch.
KGO—Reflections
KYA—Gary-Evers' Orchestra
KTAB—To be announced
KLX—Dance Music
KROW—Hawaiians; Sports
KGGC—Ten o'Clock Review
KJRC—News; Studio Program
* KFRC & network—10:15, Fred Skinner, Negro Song Stylist
KOIN—Fights
KVI—Studio Program to 10:15
KJR—Till Tomorrow
KFWB—Boxing Bouts
KECA—Musical Celebrities, records
KNX—The Crockets
KFOX—Boxing Bouts
KFSD—10:15, Studio Program
KGB—News; To be announced
KSL—Dance Orchestra
KOA—Country Club Orchestra

10:30 to 11:00 P. M.

• KPO & network—Tom Coakley's Orchestra; 10:55, Press-Radio News
KGO—News; Williams-Walsh Orch.
KYA—Dance Orchestra
KTAB—Recordings
KLX—Dance Music
KROW—Quiet Harmonies
KGGC—Ten o'Clock Review
* KFRC & network—Orchestra
KOIN—Elmer Anthony's Columbians
KJR—Dance Orchestra
KGW—Dance Orchestra
KNX—Pontrelli's Orchestra
KFWB—Dance Orchestra
KFOX—Tex Howard's Orchestra
KOA—Huffman Harmonies

11:00 to 11:30 P. M.

• KGO & network—Ted Fio-Rito's Orchestra
KPO—Freddie Bergin's Orchestra
KYA—Dance Orchestra
KTAB—Recordings
KROW—Dance of the Hour
* KFRC & network—Dick Jurgens' Orchestra
KOIN—Kelly's Kaballeros
KOMO—Moonlight Melodies
KGW—Dance Orchestra
KNX—Pontrelli's Orchestra
KFWB—Nick Stuart's Orchestra
KFOX—Nick Stuart's Orchestra

11:30 to 12:00 Midnight

• KGO & netwk—Jack Mills' Orch.
KPO—Organ Concert
KYA—Organ
KTAB—Fern Walton's Orchestra
KROW—Dance Music; Vagabond
KFRC—Lionel Hampton's Orchestra
KVI—Dance Orchestra
KOMO—Dance Orchestra
KJR—Reflections of Romance
KFWB—Dance Orchestra
KHJ—Music
KGB—Dance Orchestra
KFOX—Freddie Carter's Orchestra

12:00 to Sign Off

KTAB—D-X Program
KROW—Midnight Vagabond
KGGM—Music and News
KJR—Records
KJBS—12:01, Owl Program to 7 a.m.

WEDNESDAY Programs

Dec. 19, 1934

7:00 to 7:30 A. M.

- KPO & netwk—Harvest of Song; 7:15, Florenda Trio
- KYA—Musical Clock
- KTAB—Cuckoo Club; Stocks
- KFRC—Records; 7:25, Stocks
- KOL—Organ Revellie
- KHQ—News; Studio Program
- KFI—7:15, Louis Rueb, exercises

7:30 to 8:00 A. M.

- KPO & network—Financial Service; 7:45, Tom Mitchell, baritone
- KGO—Betsy Brunn; 7:45, Sam Moore, guitarist
- KYA—Musical Clock
- KTAB—The Texans
- KROW—Commuters Clock
- KJBS—Alarm Klok Club
- KQW—Breakfast Hour
- KGDM—Gilmore Oil Program
- KFRC—Seal Rocks Broadcast
- KOL—Organ Program
- KVI—Talk; Varieties
- KGW—Ronald Buck
- KEX—Varieties
- KJR—Market Quotations; Shadows
- KFI—N. Y. Stocks to 7:45
- KNX—Bill Sharples' Club
- KHJ—Recordings and Stocks
- KECA—Bible Study; Records
- KGB—Stocks; Seven O'Clock Club
- KSL—Broadcasters Review

8:00 to 8:30 A. M.

- KPO & network—The Honeymooners, Grace and Eddie Albert; 8:15, Tony Wons' Scrapbook
- KGO—Crosscuts Log o' Day
- KYA—Christian Science Reading; 8:15, Mr. and Mrs. Reader
- KTAB—Shipping News; Santa Claus
- KLX—Records; 8:20, Stocks
- KROW—Commuters Clock
- KJBS—Auburn Airs; Varieties
- KQW—Morning Melodies
- KGDM—Recorded Program
- KFRC—Records to 8:15
- KFRC & netwk—Hollywood Country Church
- KOL—Music; 8:15, Cecil & Sally
- KVI—Mountaineers; Mkt Specials
- KOIN—Rhythms to 8:15
- KOMO—Morning Reveries
- KHQ—Crazy Wells; Station Review
- KFI—Church Quarter Hour to 8:15
- KNX—Jewel Box; Help for the Day
- KECA—8:15, Recordings
- KFOX—Grain Reports; Songs
- KGB—Records to 8:15
- KSL—Informal Music; Good Morning Judge

8:30 to 9:00 A. M.

- KPO & netwk—U. S. Army Band
- KGO—Crosscuts Log o' the Day
- KYA—Feminine Notebook; Concert
- KTAB—Radio Shoppers' Digest
- KLX—Covered Wagon Jubilee
- KROW—Novelty Review
- KJBS—Dance Orchestra
- KQW—Morning Concert
- KGDM—Records; 8:45, Health Talk
- KFRC & netwk—Country Church; 8:45, Jane Ellison; Magic Recipes
- KOI—Studio Program
- KGW—Abe Berovitz, violin
- KHQ—Kronenberg; Home Comfort
- KOMO—Harp Melodies; Mary's Friendly Garden
- KNX—Song Bag
- KSL—Cal-O-Dine to 8:45

9:00 to 9:30 A. M.

- KPO & netwk—Fields & Hall, songs and patter; 9:15, To be announced
- KGO—Organ Concert
- KYA—Concert; 9:15, Prudence Penny
- KTAB—Hour of Prayer
- KLX—Shopping List
- KROW—Romance; MacMarr News



GERTRUDE CHAVIS
KTAB—Vocalist

- KJBS—Popular Varieties; Records
- KGCC—Star of Today; Songs
- KQW—Tuneful Topics; Congoin
- KFRC & network—Voice of Experience to 9:15
- KFRC—9:15, Dance Music
- KGDM—Cowboy; Mabel Rubin
- KOL—9:15, Prudence Penny
- KVI—9:15, "The Gumps"
- KHQ—Musical Gems to 9:15
- KOMO—Mary's Garden to 9:15
- KJR—Morning miracles
- KNX—Dr. Sherman; Lotus Land
- KECA—Recordings
- KFSD—9:15, Good Cheer
- KGW—9:15, The Gumps
- KSL—9:15, The Gumps
- KOA—Fish Tales to 9:15

9:30 to 10:00 A. M.

- KPO & network—Marshall's Mavericks
- KGO—Improve Your Home; 9:45, Jean Abbey, Shop News
- KYA—Waltz Time
- KTAB—Health Talk
- KLX—Clinic of the Air
- KROW—Diet and Health
- KJBS—Faye Ward Program
- KGCC—Morning Melodies
- KQW—Faye Ward
- KGDM—News; Minstrels
- KFRC & network—Betsy Crocker; 9:45, Your Home and Mine
- KGW—Edna Mae Jacks, pianist; Modern Homemaker
- KJR—News Reporter; Songs
- KHQ—9:45, Tull & Gibbs
- KOL—9:45, Beautiful Melodies
- KOIN—9:45, Experiences from Life
- KFI—Hawaiians; 9:45, News
- KNX—Drury Lane; 9:45, News
- KECA—Jr. Orchestra L. A. Schools
- KFSD—Stock Reports to 9:45
- KSL—Jennie Lee; 9:45, Fish Tales
- KOA—National Farm & Home

10:00 to 10:30 A. M.

- KGO & netwk—Press-Radio News; 10:05, Mickey Gillette's Music
- KPO—Contralto; 10:15, News
- KYA—Columbia on Parade; 10:15, Hawaiians
- KTAB—News; Old Bachelor
- KLX—Clinic; 10:15, Stocks; News

- KROW—Rhythm Revue
- KJBS—News; Memories; Organ
- KGCC—Cal King
- KQW—Headline Memories; Orch.
- KGDM—Recordings
- KFRC & network—Just Plain Bill
- KFRC—10:15, Home Forum
- KGW—10:15, Crazy Crystals
- KOL—10:15, Morning Melodies
- KOIN—10:15, Air Shopping
- KVI—10:15, Sons of the Pioneers
- KJR—Homemakers; Music
- KNX—Eddie Albright's Family
- KECA—Recordings
- KGB—News; Music
- KSL—10:15, Recordings
- KOA—National Farm & Home

10:30 to 11:00 A. M.

- KPO & network—Woman's Magazine of the Air
- KGO—Jules Lande's Ensemble; 10:45, Words and Music
- KYA—Organ Concert
- KLX—International Kitchen
- KTAB—Health Talk; Shorty Burke
- KROW—Morning Concert
- KJBS—Dance Orchestra; For the Ladies
- KQW—Aunt Sammy; 10:45, Music
- KGCC—Hits of Today
- KGDM—Records; Health Talk
- KFRC & network—University of Calif.; 10:45, Better Housing; Herbert Foote, organist
- KOL—Sue Allen, shopping
- KVI—Amusement Tips to 10:45
- KJR—Club Minutes; Sereader
- KECA—Recordings
- KNX—Mary Holmes; Rhythm
- KOA—Best Foods; Betty Moore
- KSL—Triangle Club; Mrs. Chapman at Home

11:00 to 11:30 A. M.

- KPO & network—Woman's Magazine of the Air
- KGO—The Wandering Minstrel
- KYA—Organ; Unique Tunes
- KTAB—Bargains; Fashions; Rhythms
- KLX—Records; 11:15, Notes in Rhyme
- KROW—Health Talk; Spotlight
- KJBS—Popular Tunes
- KGCC—Milady's Date Book; 11:15, Band Concert
- KGDM—Organ Recital
- KQW—Light Classics
- KFRC & network—Little French Princess; Romance of Helen Trent
- KOL—Garden Talk; News
- KVI—Observer; Melodies
- KOIN—Art Kirkham
- KJR—Rhythm Rulers Recorded
- KNX—Organ; Business Trends
- KECA—Records; German Lesson
- KGB—Recordings
- KOA—Livestock and Produce

11:30 to 12:00 Noon

- KPO network—Smackout, Marion and Jim Jordan, comedy duo; 11:45, Vic and Sade
- KGO—Alvino Rey, guitarist; 11:45, KYA—Mirror of Fashion; Snapshots
- KTAB—Congoin; News
- KLX—Anita and Orsco; Records
- KROW—Latin-American Program
- KGCC—Request Hour
- KJBS—Dance Orchestra
- KQW—Variety and Theatre News
- KGDM—Organ Recital
- KFRC & netwk—American School of the Air
- KHQ—Organ Recital
- KJR—Children's Stories; Measured Steps
- KFI—Home Nursing Hints to 11:45
- KECA—11:45, Frankie Patten, pianist
- KNX—Music; 11:45, Ironizer Talk

12:00 to 12:30 P. M.

•KGO & network—Ramblers Trio
 KGO—12:15, Financial Flashes;
 12:20, Johnny O'Brien, harmonica
 KPO—News
 •KPO & network—12:15, Western
 Farm and Home Hour
 KYA—Scriptures; 12:03, Concert
 KTAB—Seventh Day Adventist
 KLX—Dance Music
 KROW—Latin-American Program
 KGW—Popular Orchestra
 KGGC—Request Hour
 KJBS—Song Hits
 KGDM—Gene Almy; Serenader
 •KFRC & network—Kate Smith's
 Matinee
 KOIN—Scrapbook; Amie Brunn
 KOL—The Carnival Hour
 KOMO—12:15, Viennese Vagabonds
 KGW—Glenn Shelly and Clarence
 Tolman; 12:15, Meier & Frank
 KHQ—Business and Pleasure
 KJR—Records; 12:12, Grain Reports
 KVI—Mkt. Specials; Headlines
 KFI—State Market Reports to 12:15
 KNX—News; 12:15, Conqoin
 KECA—12:15, News Release
 KOA—Orchestra

12:30 to 1:00 P. M.

•KPO & network—Western Farm
 and Home Hour
 KGO—Just Around the Corner
 KYA—Noonday Concert
 KTAB—Echoes of Portugal
 KLX—Don Brose; Garden Tips
 KROW—California Farm Hour;
 12:45, Records
 KJBS—Dance Matinee
 KGGC—Mountain Music
 KGW—Market Reports
 KGDM—Recordings
 •KFRC & network—Kate Smith's
 Matinee
 KOL—The Carnival Hour
 KVI—News & Comment to 12:45
 KOMO—Farm Talk; Cowboy Joe
 KGW—News; Studio Program
 KHQ—Stepping Along; Studio
 KNX—Concert Group
 KECA—Concert Favorites, records
 KOA—Brown Palace Hotel Orch.

1:00 to 1:30 P. M.

•KPO & network—Betty and Bob;
 1:15, Talks by Dr. Joseph Jastrow
 KGO—Elmore Vincent, tenor; 1:15,
 Ann Warner's Chats
 KYA—Folk Tunes; Serenaders
 KTAB—Radio Frolic
 KLX—Records; 1:15, Martha Lee
 KROW—Concert Melodies
 KJBS—Stock Reports and Records
 KQW—Friendly Hour
 KGDM—Records; Theatre Talk
 •KFRC & netwk—National Student
 Federation; Curtis Institute of
 Music
 KOL—1:15, Julie Day
 KJR—Headliners
 KOMO—1:15, Tea Time Tales
 KGW—1:15, Dental Clinic
 KHQ—1:15, Sylvia Gray
 KNX—Pontrelli's Orchestra
 KFI—1:15, Beverly Hillbillies
 KNX—Pontrelli's Orchestra
 KECA—Recordings to 1:15
 KFSD—Ad Club Luncheon
 KGB—1:15, Stocks; Farm Flashes
 KSL—Payroll Bullder
 KOA—1:15, Crazy Hotel Orchestra

1:30 to 2:00 P. M.

•KPO & netwk—Oxydol's Own Ma
 Perkins; 1:45, Dreams Come True,
 Barry McKinley, baritone
 KGO—Ann Warner's Chats; 1:45,
 John Lee, baritone
 KYA—Modern Maestros
 KTAB—Jean Kent, Economics
 KLX—Popular Concert
 KROW—Oakland Public Schools;
 1:45, Oklahoma Ramblers

KJBS—Afternoon Popular Concert
 KQW—Afternoon Concert
 KGDM—Accordion Boys; Records
 •KFRC & network—Curtis Insti-
 tute of Music
 KOIN—Book of Life
 KJR—Renovize; The Sun Dial
 KNX—Pontrelli's Orchestra
 KFSD—Old Time Program

2:00 to 2:30 P. M.

•KPO & network—Al Pearce and
 His Gang
 KGO—Edna Fischer, pianist; 2:15,
 Merry Macs; Vocalists
 KYA—Don Valdemar's Orchestra
 KTAB—Globe Trotter; Romancin'
 KLX—Records; Romance Under
 Water
 KJBS—Gerald Kenney; Records
 KROW—Dance Matinee
 KQW—Dance Matinee
 KGDM—Recordings
 •KFRC & network—Happy Go
 Lucky Hour
 KJR—Salon Hour, recorded
 KNX—The Bookworm
 KECA—Recordings
 KFSD—2:15, Studio Program
 KSL—Music; 2:15, Dental Clinic
 KOA—Huffman Reporter; 2:15,
 Rowdy Wright

2:30 to 3:00 P. M.

•KPO & network—Al Pearce Gang
 KGO—Vagabonds Quartet
 KYA—Lost & Found; Modern Notes
 KTAB—Relief Talk
 KLX—Talk; Stocks; 2:40, Records
 KROW—Dance Matinee
 KJBS—Dance Selections
 KQW—Dance Matinee
 KGDM—Romancers
 •KFRC & network—Happy Go
 Lucky Hour
 KJR—Salon Hour, recorded
 KECA—Classic Hour
 KNX—Recordings
 KFSD—2:45, Studio Program
 KSL—Parent-Teachers; Pat Chasin
 KOA—String Serenade; Happy Jack

3:00 to 3:30 P. M.

•KPO & network—Langendorf Pic-
 torial; 3:15, Mickey Gillette's
 Music
 KGO—Education in the News; 3:15,
 Alma Kitchell, contralto
 KYA—Band Concert
 KTAB—J. Malloy; Chinese News
 KLX—World Revue
 KROW—Fay Lanphier; Merry-Go-
 Round
 KJBS—News; Recordings
 KQW—Stocks; 3:05, Music
 KGDM—Records
 •KFRC & netwk—Feminine Fancies
 KJR—Easy Chair; Enchanted Islands
 KGW—Concert Trio
 KHQ—Hints; Club Bulletin
 KNX—Concert Orchestra
 KECA—Raine Bennett; Records
 KFSD—Royal Brown, Organist
 KOA—Education in the News
 3:15, University of Denver
 KSL—Songs of Long Ago; 3:15,
 Junior Hour

3:30 to 4:00 P. M.

•KPO & network—Mickey Gillette's
 music
 KGO—Interlude; Jack & Loretta
 Clemens; Singing Strings
 KYA—Symphony Highlights
 KLX—Recordings
 KTAB—Sophistication; Talk
 KROW—Recordings
 KQW—Popular Concert; Music
 KJBS—Recordings
 KGDM—Wyoming Rustlers; Ernie
 Cruz
 •KFRC & network—Frank Castle's
 Matinee
 KOL—Harriet Links; Studio Prog.

KOIN—Newspaper of the Air
 KHQ—Magic Travels; Happy Feet
 KOMO—Concert in Miniature
 KFI—Ann Warner's Chats
 KNX—Fletcher Wiley
 KGB—3:55, Along the Airways
 KSL—Junior Hour; News
 KOA—News; Irving Kennedy, vocal

4:00 to 4:30 P. M.

•KPO & network—Pickens Sisters;
 Will Osborne's Orchestra
 KGO—Tally-Ho, instrumentalists
 KYA—Tea Dance Parade
 KTAB—"Jewish Date Book"; Bay
 Meadows Race
 KLX—Musical Jigsaw; Bob's Club
 KROW—Waltzes; Hawaiians
 KJBS—Dance Orchestra
 KGDM—Gilmore Oil Program
 KQW—Star Reporter; Popular Tunes
 KFRC—N. Y. Stocks to 4:05
 •KFRC & netwk—Edgewater Beach
 Concert; University of the Air
 KOIN—Newspaper of the Air
 KHQ—Studio; 4:15, News Album
 KGW—Friendly Chat
 KYA—Business Talk; Tea Dansant
 KFI—Better Business Talk
 KNX—Haven of Rest
 KECA—4:15, Better Business Bureau
 KSL—Town Crier
 KOA—Comedy Capers; Stamp Club

4:30 to 5:00 P. M.

•KPO & network—Talk by Dean
 Carl W. Ackerman, School of
 Journalism, Columbia University
 KPO—4:45, News Reporter
 KGO—Robert Pitner, tenor
 •KGO & netwk—4:45, The Big Top
 KYA—Tea Dance
 KTAB—Keep Smiling Revue
 KLX—Bro. Bob's Club; 4:45, Health
 School
 KROW—SERA Choral Ensemble
 KQW—Story Time; 4:45, Songs of
 the Islands
 KJBS—Dance Orchestra
 KGDM—Dance Orchestra to 4:45
 •KFRC & network—Fred Skinner,
 songs; 4:45, Between the Bookends
 KVI—Santa Claus to 4:45
 KOIN—Hollywood Reporter; Toy-
 land Express
 KGO—To be announced
 KGW—Eddie King; 4:45, Milton
 Gumbert
 KJR—Snapshots
 KOMO—4:45, Moments of Melody
 KNX—Advisor; U. S. C.
 KFI—Organ Recital
 KGB—Police Talk to 4:35
 KSL—Town Crier; 4:45, Orphan
 Annie

5:00 to 5:30 P. M.

•KPO & network—Mary Pickford
 and Stock Company
 KGO—Children's Hour; 5:15, Chro-
 mos, Chas. Runyan, pianist
 KYA—Children's Hour
 KTAB—Lauretta La Marr; Santa
 Claus
 KLX—Music; Bill, Mack & Jimmie
 KROW—Memory Lane; Vocalist
 KGGC—Echoes; Studio Frolic
 KQW—Popular Concert
 KFRC—Og, Son of Fire (E. T.)
 •KFRC & network—5:15, Billy
 Bachelor
 KOIN—Bob & Dolly to 5:15
 KJR—Drama; Waltzes & Tangos
 KNX—Music
 KECA—Recordings
 KFSD—Better Business; Studio
 KSL—Pullanman Prog. 5:15, Tarzan

5:30 to 6:00 P. M.

•KPO & network—Nomads
 KGO—Tim Healy's Ivory Stamp Club;
 5:45, Little Orphan Annie
 KTAB—Dr. Thompson, talk
 KYA—Metropolitans; 5:45, Campbell
 Corner

KLX—Covered Wagon Jubilee
 KROW—Eating Your Way to Health
 KGGC—Health Talk; Irish Gems
 KQW—Popular Orchestra
 *KFRC & network—Everett Marshall's Broadway Varieties
 KGW—Ivory Soap to 5:45
 KJR—Tarzan; Orphan Annie
 KOMO—Stamp Club to 5:45
 KHQ—Ivory Stamp Club to 5:45
 KNX—Elec. Trans.; Orphan Annie
 KFI—Ivory Stamp Club; Music
 KFOX—News; Records; Talk
 KFSD—Studio; Farley's Rangers
 KOA—Vocalist; Studio Program

6:00 to 6:30 P. M.

*KPO & network—Warden Lewis E. Lawes in 20,000 Years in Sing Sing
 KGO—Melodiana; Vocal & Orch.
 KYA—Man About Town; Orchestra
 KTAB—Organ; News Service
 KLX—Arlon Trio
 KROW—News; Rhythm Kings
 KGGC—Dinner Dance
 KQW—California Department of Agriculture; 6:15, Recordings
 *KFRC & network—Chesterfield Program; Nino Martini & Orch.
 KJR—Reporter; Romance Time
 KFWB—News; Mysteries; Fun Fest
 KNX—News; 6:15, Concert Group
 KECA—Board of Education; News
 KFOX—News; Trio; Al and Molly
 KFSD—Dinner Music

6:30 to 7:00 P. M.

*KPO & network—John Charles Thomas, baritone
 KGO—Barbara Merkle, harpist; 6:45, Air Adventures of Jimmy Allen
 KYA—Cy Trobbe's Orchestra
 KTAB—Sport Page; Affairs of Leo
 KLX—Arlon Trio
 KROW—Ne-er Do Well
 KGGC—Theatre of the Air; Music
 KQW—Market Reports; Thorobred
 *KFRC & network—Adventures of Gracie
 KJR—Romance; 6:45, Jimmie Allen
 KFWB—Organist; Jimmie Allen
 KNX—Dance; 6:45, Elec. Trans.
 KECA—Wesley Tourtellotte, organ
 KFOX—School Kids; Jimmy Allen
 KFSD—Dinner Music

7:00 to 7:30 P. M.

*KPO & network—Gabrielle De Lys, contralto; 7:15, Madame Sylvia, beauty and health expert
 KGO—Business Review; 7:15, Agriculture Today
 KLX—News; 7:15, Lovable Liars
 KYA—Ernie Smith's Sport Page; 7:15, Tales of the Turf
 KTAB—Italian News; Sport of Kings
 KROW—C. W. Hammond; L'Italia News
 KQW—Weather; Voice of Portugal
 KGGC—Jewish Radio Hour
 *KFRC & network—Byrd Expedition Broadcast
 KHQ—Jewel Box to 7:15
 KJR—Tonic Tunes; Dollars & Sense
 KFWB—Syncoptars
 KNX—Watanabe & Archie; Rajput
 KFI—Four Blackbirds to 7:15
 KECA—7:15, Records
 KFOX—Eb & Zeb; Bobby & Betty
 KFSD—7:15, Sonny & Buddy

7:30 to 8:00 P. M.

*KPO & network—One Man's Family, serial Drama
 KGO—Comedy Stars of Hollywood; 7:45, Californians on Parade
 KYA—Cowboys; Louise Taber
 KTAB—Socialist Labor Party; Organ
 KLX—Studio Program
 KROW—Sports Review; Hawaiians
 KGGC—Jewish Radio Hour
 KQW—Italian Radio Theatre

*KFRC & network—Melody Masterpieces
 KOIN—Jimmie Allen to 7:45
 KOL—Speaker Stevenson to 7:45
 KJR—Popular Concert
 KNX—In-Laws; 7:45, King Cowboy
 KFWB—Pioneers; Comedy Stars
 KECA—Echoes of the Opera
 KFOX—Boy Detective; Vagabonds
 KGB—James O'Connor to 7:45
 KFSD—Marie Viratelle Kriete
 KSL—Crazy Crystals; Comedy Stars
 KOA—Conoco Program

8:00 to 8:30 P. M.

*KPO & network—Amos 'n' Andy; 8:15, Red Davis, dramatic series
 KGO—Californians on Parade; 8:15, College Daze
 KYA—Trobbe's Scrap Book
 KTAB—SERA Choral Society; Accordion Ensemble
 KLX—Rhythmic Reporters
 KROW—Crime Stories; 8:15, Watchtower
 KGGC—Harlem Nights; Records
 KQW—Singing Stars
 *KFRC & network—Myrt & Marge; 8:15, Edwin C. Hill
 KJR—Neapolitans
 KNX—June Irwin; To be announced
 KFWB—Latin-American Program
 KECA—Echoes of the Opera
 KFOX—Ballads; Instrumental Trio
 KFSD—Jimmie Allen to 8:15

8:30 to 9:00 P. M.

*KPO & network—Lanny Ross and His Log Cabin Orchestra
 KGO—Clef Dwellers; Sports Headliners
 KYA—Dance Orchestra; 8:45, Drama
 KTAB—School-days
 KLX—All-Star Sports; Tunes
 KROW—Harmonies; Sextette
 KGGC—Concert; Tamey Tunes
 KQW—Waltz Favorites
 *KFRC & network—Voice of Experience; 8:45, Treasures of Time
 KOL—8:45, Mirth Parade
 KOIN—8:45, Moods in Music
 KVI—8:45, Orchestra
 KJR—Scrapbook; Castles in Music
 KNX—Songs; To be announced
 KFWB—Jack Joy's Orchestra
 KECA—Recordings
 KFOX—Melodies; Cecil & Sally
 KSL—8:45, Orchestra

9:00 to 9:30 P. M.

*KPO & network—Town Hall Tonight; Fred Allen, comedian; Lenzie Hayton's Orchestra; James Melton, tenor
 KGO—Bal Tabarin Orchestra
 KYA—Music; Comedy Caravan
 KTAB—Nevada Nightherders
 KLX—Krausmeyer & Cohen; Melody Race
 KROW—Boxing Matches
 KQW—Musings; Salon Orchestra
 KGGC—News; Wyoming Cowboys
 *KFRC & network—Treasures of Time; 9:15, Jacques Renard and Orchestra
 KOL—Public Bench; Orchestra
 KOIN—Serenades
 KVI—9:15, Master's Music Room
 KJR—News; Song Market
 KNX—News; 9:15, Musical Prog.
 KFWB—Dance Orchestra
 KECA—A. J. C. Musicale
 KFOX—Beverly Hillbillies
 KFSD—Furmbilt; 9:15, Studio
 KSL—Pinto Pete Ranch Boys to 9:15

9:30 to 10:00 P. M.

*KPO & network—Town Hall Tonight
 KGO—National Players
 KYA—Caravan; News; Fights
 KLX—News; Adolph's Rangers
 KTAB—Wrestling Matches
 KROW—Boxing Matches
 KQW—Kirk of Sleepy Hollow

KGGC—Dance Tunes; Recordings
 *KFRC & network—Dance Orchestra
 KVI—News; Orchestra
 KOL—9:45, News; Editorial
 KOIN—Joseph Sampietro, violinist; Orchestra
 KJR—"Purple Ray" Drama; Chamber of Commerce
 KNX—The Crocketts
 KFWB—Slumber Time
 KECA—Melodie; 9:45, Records
 KFOX—Beverly Hillbillies
 KFSD—Eddie Wheeler's Orchestra
 KSL—Orchestra; Melody Lane

10:00 to 10:30 P. M.

*KPO & network—Richfield Reporter; 10:15, Tom Coakley's Orchestra
 KGO—Paul Martin and his music
 KYA—Famous Fights; Rhyme Land
 KTAB—Wrestling Matches
 KLX—Recordings
 KROW—Boxing Matches
 KGGC—Ten o'Clock Revue
 KFRC—News
 *KFRC & network—To be announced; 10:15, Organ Recital
 KVI—Wednesday Night Mixer
 KOL—Ivan Dittmars, Organist
 KOIN—Orchestra
 KJR—Orchestra
 KNX—Orchestra
 KFWB—News; Organ
 KECA—Musical Celebrities
 KFOX—News; 10:15, Organ
 KGB—News; Studio; Orchestra
 KSL—Music; 10:15, Pianist
 KOA—Orchestra

10:30 to 11:00 P. M.

*KPO & network—Tom Coakley's Orch.; 10:55, Press-Radio News
 KGO—News; 10:35, Williams-Walsh Orchestra
 KYA—Dance Orchestra
 KTAB—Charley Dring's Orchestra
 KROW—Quiet Harmonies
 KGGC—Ten o'Clock Revue
 *KFRC & network—Orville Knapp's Orchestra
 KOIN—Dance Orchestra
 KOL—Dance Music
 KGB—Elec. Trans.; Orchestra
 KJR—Till Tomorrow
 KNX—Pontrelli's Orchestra
 KFWB—Tex Howard's Orchestra
 KFOX—Tex Howard's Orchestra

11:00 to 11:30 P. M.

*KGO & network—Ted Flo-Rito's Orchestra
 KPO—Freddie Bergin's Orchestra
 KYA—Sandman Organ
 KTAB—Vern Walton's Orchestra; Dansapations
 KROW—Dance of the Hour
 *KFRC & network—Dick Jurgen's Orchestra
 KOIN—Club Victor
 KOMO—Dance Orchestra
 KNX—Pontrelli's Orchestra
 KFWB—Dance Orchestra
 KFOX—Nick Stuart's Orchestra

11:30 to 12:00 Midnight

*KGO & network—Bart Woodyard's Orchestra
 KPO—Organ Concert
 KYA—Organ Music
 KTAB—Dansapations
 KROW—Dance Music
 KGGC—Fritz Wolcott's Orchestra
 *KFRC & network—To be announced
 KOIN—Phantom Violin
 KGW—Bart Woodyard Orchestra
 KOMO—Moonlight Melodies
 KFWB—Dance Orchestra
 KFOX—Freddie Carter's Orchestra

12:00 to Sign Off

KTAB—DX Program
 KROW—Midnight Vagabond
 KFI—Recordings
 KGB—Records
 KJBS—12:01, Owl Program to 7 a.m.

THURSDAY Programs

Dec 20, 1934

7:30 to 8:00 A. M.

- KPO & network—Financial Service; 7:45, To be announced
- KGO—Morning Parade
- KYA—Musical Clock
- KTAB—The Texans
- KROW—Commuters Clock
- KJBS—Alarm Klok Klub
- KQW—Breakfast Hour
- KFRC—Seal Rocks Broadcast
- KGDM—Gilmore Oil Program
- KOL—Organ Program
- KJR—Market Quotations; Records
- KVI—Varieties; Musical Bracer
- KOMO—7:45, Stradivarieties
- KGW—Ronald Buck to 7:45
- KFI—Stock Market to 7:45
- KHJ—Recordings and stocks
- KNX—Bill Sharples Club
- KECA—Bible Fellowship; Records
- KFSD—7:45, Studio Program
- KGB—Stocks; Seven O'Clock Club
- KSL—Morning Watch; McThrift

8:00 to 8:30 A. M.

- KPO—Songs by the Kitchen Sink
- KPO & network—8:15, Tony Wonn Scrapbook
- KGO—Crosscuts from Log o' Day
- KYA—Christian Science Reading; 8:15, Mr. and Mrs. Reader
- KTAB—Shipping News; Santa Claus
- KLX—Recordings; 8:20, Stocks
- KROW—Commuters Clock
- KJBS—Auburn Airs; Varieties
- KQW—Morning Melodies
- KGDM—Ernie Cruz Prog.; Records
- KFRC—Recordings
- ★ KFRC & network—8:15 Academy of Medicine
- KOIN—Rhythms to 8:15
- KOL—Organ; 8:15, Cecil & Sally
- KOMO—Morning Reveries
- KHQ—Edna Fischer, pianist to 8:15
- KVI—Records; Market Specials
- KFI—Church Quarter Hour to 8:15
- KNX—Jewel Box; Help for the Day
- KECA—Edna Fischer, pianist to 8:15
- KFSD—Johnny O'Brien to 8:15
- KSL—Melodies; Mary & John
- KOA—Galaxy of Stars; Band

8:30 to 9:00 A. M.

- KPO & network—U.S. Navy Band
- KPO—8:45, Breakfast Club
- KGO—Crosscuts Log o' the Day
- KYA—Morning Concert
- KTAB—Radio Shoppers' Digest
- KLX—Covered Wagon Jubilee
- KROW—Novelty Review
- KQW—Morning Concert
- KJBS—Dance Music; Pianist
- KGDM—Records; 8:45, Talk
- ★ KFRC & network—Hollywood Country Church
- KOMO—Harp Melodies; Mary's Garden
- KGW—8:45, Heinz Musicale
- KHQ—Review; Heinz Co.
- KFI—Music; 8:45, Julia Hayes
- KNX—Song Bag
- KECA—Recordings
- KSL—Cal O-Dine; Mary & Bennie
- KOA—U. S. Navy Band

9:00 to 9:30 A. M.

- KPO & network—Fields & Hall; 9:15, Merry Maes
- KGO—Organ Concert
- KYA—Concert; Prudence Penny
- KTAB—Hour of Prayer
- KLX—Shopping List
- KROW—Romance; Varieties
- KJBS—Popular Concert; Bargain
- KGCC—Stars; Songs; Bargains
- KQW—Tuneful Topics
- KGDM—Cowboy; Personalities
- ★ KFRC & network—Voice of Experience to 9:15
- KFRC—9:15, Dance Music
- KOL—9:15, The Gumps



JAY BROYER
KFRC—2:00 P. M.

- KVI—9:15, The Gumps
- KHQ—9:15, Home Comfort
- KJR—9:15, Early Echoes
- KNX—Organ; Lotus Land
- KECA—Recordings
- KGB—9:15, The Gumps
- KFSD—Studio Program; Good Cheer
- KSL—9:15, The Gumps

9:30 to 10:00 A. M.

- KPO & network—Martha Meade Society
- KPO—9:45, Elmore Vincent, tenor
- KGO—Improve Your Home
- KGO & network—9:45, Press-Radio News; 9:50, Piano Vignettes
- KYA—Lovers Lane; Waltz Time
- KTAB—Health Talk
- KLX—Clinic of the Air
- KROW—Diet and Health
- KJBS—For the Ladies
- KGCC—Morning Melodies
- KQW—Gems of Melody
- KGDM—News; Records
- ★ KFRC & network—George Hall's Orchestra
- KVI—Dr. Burns; Mystic Melodies
- KJR—News; Songs for Sale
- KHQ—9:45, Tull & Gibbs
- KGW—9:45, Modern Homemaker
- KFI—9:45, News Release
- KECA—Records to 9:45
- KNX—Music; 9:45, News
- KFSD—Stock Reports to 9:45
- KGB—News to 9:45
- KOA—Farm and Home

10:00 to 10:30 A. M.

- KPO & network—Woman's Magazine of the Air
- KGO—Mickey Gillette's Music
- KYA—Columbia on Parade, 10:15 The Novelty Shop
- KTAB—News; Bachelor; Bargains
- KLX—Clinic; Stocks; News
- KROW—Rhythm Revue
- KJBS—News; 10:05, Memories
- KGCC—Cal King
- KGDM—Recordings
- KQW—News; 10:05, Orchestra
- KOL—10:15, Morning Melodies
- ★ KFRC & network—Just Plain Bill
- KFRC—10:15, Home Forum
- KOIN—10:15, Air Shopping
- KVI—10:15, Sons of Pioneers

- KJR—Home Makers; Music Shop
- KNX—Eddie Albright's Family
- KECA—Recorded Program
- KGB—10:15, Marie Golden

10:30 to 11:00 A. M.

- KPO & network—Woman's Magazine of the Air
- KGO—Airbreaks; Variety Program; Music Guild
- KYA—Organ Concert
- KTAB—Health Talk
- KLX—International Kitchen
- KJBS—Vocalists; Melodies
- KROW—Morning Concert
- KGCC—Hits of Today
- KGDM—Records; Health Talk
- KQW—Aunt Sammy; Music
- KFRC—Better Business Bureau
- ★ KFRC & network—10:45, Pat Kennedy and Kassel's Orchestra
- KOL—Morning Melodies to 10:45
- KVI—Amusement Tips to 10:45
- KJR—Club Minutes; Uncle Hank
- KECA—Recordings
- KNX—Mary Holmes; 10:45, Rhythm
- KSL—Colonial Dames to 10:45
- KOA—10:45, Livestock & Produce

11:00 to 11:30 A. M.

- KPO & network—To be announced
- KGO—NBC Music Guild
- KYA—Organ Concert
- KTAB—Fashions; Modern Rhythms
- KLX—Anita & Orosco; Tonic Tunes
- KROW—Health Talk; Spotlight
- KGCC—Milady's Date Book; Waltz Time
- KJBS—Dance Orchestra
- KQW—Light Classics; Records
- KGDM—Organ Recital
- ★ KFRC & network—Little French Princess; Helen Trent Romance
- KOL—Garden Talk; 11:15, News
- KOIN—This and That
- KVI—Observer; Morning Melodies
- KJR—Rhythm Rulers
- KNX—Marshall Grant, Organ
- KECA—Recordings
- KGB—Recordings
- KOA—Huffman Harmonies

11:30 to 12:00 Noon

- KPO & network—To be announced; 11:45, Vic and Sade
- KGO—Smackout; 11:45, Agricultural Bulletin
- KYA—Dance Time; Snapshots
- KTAB—Rhythms; News
- KLX—Beauty Salon; Scrapbook
- KROW—Latin America Program
- KJBS—Popular Hits; Talk
- KGCC—Request Hour
- KQW—Accordion Capers; News
- KGDM—Organ Recital
- ★ KFRC & network—Amer. School of the Air
- KJR—Irish Minstrel; Music
- KECA—Records; 11:45, Music Talk
- KNX—Talk; 11:45, Ironizer Talk
- KOA—Question Box to 11:45

12:00 to 12:30 P. M.

- KGO & network—Castles of Romance
- KGO—12:15, Financial Flashes; 12:20, Melody Revue
- KPO—News Reporter
- KPO & network—12:15, Western Farm and Home Hour
- KYA—Scriptures; 12:03, Concert
- KTAB—Congoin; Agric Period
- KLX—Dance Music
- KROW—Latin American Program
- KJBS—Vocal and Instrumental
- KGCC—Request Hour
- KQW—Popular Orchestra
- KGDM—Recordings
- ★ KFRC & network—Roadways of Romance
- KVI—Mkt. Specials; Headlines
- KOL—The Carnival Hour

KOIN—Mary Cullen; Amie Brunn
KOMO—12:15, Viennese Vagabonds
KGW—12:15, Meier & Frank
KHQ—Organ Recital
KJR—12:12, Grain Reports
KFI—Fed. & State Mkt. Reports
KNX—News; 12:15, Congoin
KECA—12:15, News Release
KSL—Payroll Builder
KOA—Orchestra

12:30 to 1:00 P. M.

•KPO & network—Western Farm and Home
KGO—Melody Revue
KYA—Noonday Concert
KTAB—Echoes of Portugal
KLX—Don Brose; Memory Paths
KJBS—Dance Matinee
KROW—California Farm Hour; 12:45, Hits of Today
KGGC—Mountain Music; Salonesque
KQW—Market Reports
KGDM—Recordings
*KFRC & network—Roadways of Romance
KOIN—Johnnie Walker's Scrapbook to 12:45
KOL—Carnival Hour
KOMO—Vagabonds; Cowboy Joe
KGW—News; 12:45, Glenn Shelley
KHQ—Luncheon Club
KNX—Concert Group
KECA—Recordings
KSL—Utah State Agric. College; 12:45, Recorded Program
KOA—Eastman School of Music

1:00 to 1:30 P. M.

•KPO & network—Betty and Bob; 1:15, East & Dumke
KGO—Edna Fischer, pianist; 1:15, Ann Warner
KYA—Shrine Club Luncheon
KTAB—Radio Frolic
KLX—Records; 1:15, Martha Lee
KROW—Concert Melodies
KJBS—Stocks; Recordings
KQW—Friendly Hour
KGDM—Recordings; 1:15, Quartet
*KFRC & network—Visiting Armenia's Little House; 1:15, Salvation Army Band
KOL—1:15, Julie Day
KOMO—1:15, Tea Time Tales
KHQ—1:15, Sylvia Gray
KJR—Musical Auction to 1:15
KGW—1:15, Dental Clinic
KFI—1:15, Beverly Hillbillies
KNX—Paris Inn
KECA—Recordings to 1:15
KGB—1:15, Stocks; Farm Flashes
KFSD—Rotary Club
KSL—Payroll Builder

1:30 to 2:00 P. M.

•KPO & network—Oxydol's Own Ma Perkins; 1:45, Dreams Come True, Barry McKinley
KGO—Ann Warner's Chats; 1:45, Harry Stanton, basso
KYA—Modern Maestros
KTAB—Jean Kent, Economics
KLX—Popular Concert
KJBS—Dance Orchestras
KROW—Spanish Serenade; Ramblers
KQW—Afternoon Concert
KGDM—Education; Recordings
KFRC—Stocks; Christian Sci. News
*KFRC & network—1:45, Dick Messner's Orchestra
KOL—1:45, Bureau of Fisheries
KOIN—Book of Life
KJR—Renovize; Song Souvenirs
KNX—Paris Inn
KFSD—Old Time Program
KGB—Parent Teachers' Association

2:00 to 2:30 P. M.

•KPO & network—Al Pearce and His Gang
KGO—National Congress of Parents and Teachers
KYA—Don Valdemar's Orchestra

KTAB—Globe Trotter; Romancers'
KLX—Bridge Talk; 2:15, Records
KROW—Dance Matinee
KJBS—Blindcraft Ensemble
KGDM—Records; News
KQW—Blindcraft Ensemble
*KFRC & network—Happy Go Lucky Hour
KJR—Salon Hour
KNX—Bookworm
KECA—Classic Hour
KSL—Loretta Lee; Dental Clinic
KOA—Theatre Reporter; P. T. A.

2:30 to 3:00 P. M.

•KPO & network—Al Pearce Gang
KGO—Pair of Pianos; Gertrude Lyne and Grace Frankel, piano duo
KYA—Modern Notes
KTAB—Child Life; 3:4 Time
KLX—S. P. Stocks; 2:40, Records
KROW—Dance Matinee
KJBS—Events of Interest; Orch.
KGDM—The Romancers
KQW—Dance Matinee
*KFRC & network—Happy Go Lucky Hour
KJR—Salon Hour, records
KNX—To be announced
KECA—Records
KFSD—2:45, Studio Program
KSL—Organ and A. M. A. Speaker; 2:45, Miniatures

3:00 to 3:30 P. M.

•KPO & network—Langendorf Pictorial; 3:15, Mickey Gillette
KGO—Ithaca College Choir; 3:15, Captain Bruce Barnsfather
KYA—Band Concert; Melody Man
KTAB—Notices; Chinese News
KLX—Song Market; Records
KROW—Fay Lanphier; Music
KJBS—News; Ballroom Favorites
KGDM—Recordings
KQW—Stocks & Bonds; Variety
*KFRC & network—Feminine Fancies
KHQ—Organ; Club Bulletin
KGW—Crazy Crystals to 3:15
KJR—Enchanted Islands; Music
KOMO—3:15, Fire Prevention Talk
KECA—Dr. Meyers; Records
KNX—Louise Johnson, Astro-Analyst
KFSD—Organ Recital
KSL—Pianist; Junior Hour

3:30 to 4:00 P. M.

•KPO & network—Mickey Gillette's music
KGO—The Family Cook Book; Singing Strings
KYA—Drama; Hillbillies
KTAB—Sophistication; Talk
KLX—Recordings
KROW—Singing Strings
KJBS—Dobbie's Radio Jubilee
KQW—Captain Dobbie
KGDM—Organ Recital
*KFRC & network—Frank Castle's Matinee from Trouville Club
KOL—Harriet Lincks; Studio
KOIN—Newspaper of the Air
KOMO—Birnbaum's Bavarians
KFI—Ann Warner's Chat
KNX—Fletcher Wiley
KGB—3:55, Along the Airways
KSL—The Junior Hour; Records
KOA—3:45, Microphone News

4:00 to 4:30 P. M.

•KPO & network—Richard Himber's Orchestra; 4:15, John B. Kennedy
KGO—The Restful Hour, concert orchestra direction Emil Polak
KYA—Tea Dance Parade
KTAB—"The Jewish Date-Book"; Bay Meadows Race
KLX—Oak Recreation Dept.
KROW—Waltz Time; Organ
KJBS—Dance Orchestra
KQW—Star Reporter; Records
KGDM—Gillmore Oil Program
KVI—Pre-school Story Lady to 4:15

*KFRC & network—Edgewater Beach Concert Orchestra; University of the Air
KJR—Tea Dansant
KGW—Friendly Chat
KHQ—4:15, News Album
KNX—Haven of Rest
KFI—Paul Roberts, tenor to 4:15
KECA—4:15, Records
KGB—Girl Scouts Program to 4:15
KSL—Broadcaster's Review

4:30 to 5:00 P. M.

•KPO & network—Will Aubrey, Bard of the Byways
KGO—4:45, News
KPO—The Restful Hour
*KGO & network—4:45, The Big Top
KYA—Tea Dance
KTAB—Keep Smiling Revue
KLX—Bro. Bob's Club, Health School
KROW—Lee Davis Cowboys
KQW—Story Time; 4:45, Songs of the Islands
KJBS—Dance Orchestra to 4:45
KGDM—Iron House
*KFRC & network—Charlie Kent's Adlerikans; 4:45, Between the Bookends
KOL—To be announced
KOIN—Reporter; Toyland Express
KJR—Snapshots
KGW—Eddie King; 4:45, Milton L. Gumbert
KOMO—4:45, Moments of Melody
KNX—Personal Advisor; U. S. C.
KFI—Organ Concert
KGB—S. D. Calif. Club to 4:35
KSL—Broadcasters Review; Orphan Annie
KOA—Thrills of Tomorrow; Smilin' Ed McConnell

5:00 to 5:30 P. M.

•KPO & network—Fleischmann Variety Hour; Rudy Vallee and his Connecticut Yankees
KGO—Art Revue; 5:15, Beaux Arts Trio
KYA—Children's Hour
KTAB—Lauretta La Marr; Santa Claus
KLX—Pianist; Bill, Mack & Jimmie
KROW—Memory Lane; Ramona & Romera
KGGC—Dance Echoes; Studio Frolic
KQW—Popular Concert
KFRC—Og, Son of Fire to 5:15
*KFRC & network—5:15, Billy Bachelor
KOIN—Bob and Dolly to 5:15
KOL—Treasure Adventures to 5:15
KJR—Steamboat Bill; Concert
KNX—Organ; Quartet
KFSD—C. of C. Studio Program
KSL—Musical Prog; 5:15, Tarzan

5:30 to 6:00 P. M.

•KPO & network—Fleischmann Variety Hour
KGO—Beaux Arts Trio; 5:45, Little Orphan Annie
KYA—Metropolitans; 5:45, Campbell
KTAB—Health Talk
KLX—Covered Wagon Jubilee
KROW—Eating Your Way to Health
KGGC—Health Talk; Irish Gems
KQW—Popular Orchestra
*KFRC & network—To be announced
KJR—Melodies; Orphan Annie
KNX—Drama of Youth; 5:45, Orphan Annie
KECA—Recordings
KFSD—5:45, Farley's Rangers
KSL—Standard Optical; Krausmeyer & Cohen

6:00 to 6:30 P. M.

•KPO & network—Captain Henry's Maxwell House Show Boat
KGO—Everybody Sing
KYA—Man About Town; Orchestra
KTAB—News; Organ Concert

KLX—Arion Trio
 KROW—News; 6:15, Harmonies
 KGGC—Dinner Dance Review
 KQW—Popular Program
 *KFRC & network—Let's Go to Europe; Piano Fantasies
 KOIN—Merry Gentlemen; Piano Phantasies
 KVI—6:15, Hollywood News
 KJR—News; Romance Time
 KNX—News; 6:15, Concert Group
 KECA—Noreen Gammill; News
 KFWB—News; Mysteries; "Fun Fest!"
 KFOX—News; Vocalists; Al, Molly
 KSL—The Utah Hour

6:30 to 7:00 P. M.

*KPO & network—Captain Henry's Show Boat
 KGO—Federal Business Talk; 6:45, Air Adventures of Jimmy Allen
 KYA—Orchestra
 KTAB—Sports; Affairs of Leo
 KLX—Arion Trio
 KROW—Rhythm Kings; 6:45, Dr. Facel
 KQW—State Market Reports; 6:45, Thorobred Quarter Hour
 KGGC—Theatre of the Air; Dance Music
 *KFRC & network—Fred Waring's Pennsylvanians
 KJR—Romance; Jimmy Allen
 KNX—Dance; 6:45, Jimmy Allen
 KFWB—Fun Fest; Jimmie Allen
 KECA—Wesley Tourtelotte, organ
 KFOX—School Kids; Jimmie Allen

7:00 to 7:30 P. M.

*KPO & network—Paul Whiteman's Music Hall; Orch. & Entertainers
 KGO—Ricardo and His Violin; 7:15, Review of Activities of the San Francisco Municipal Government
 KYA—Ernie Smith's Sport Page; 7:15, Sportsman's Corner
 KTAB—Italian News; Sport of Kings
 KLX—News; 7:15, Magic Harmony
 KROW—C. W. Hammond; News
 KGGC—Symphonette; Tango Time
 KQW—Weather; News; Voice of Portugal
 *KFRC & network—Barnyard Serenade
 KOIN—Little Show; The Journal
 KOL—Beautiful Melodies
 KVI—To be announced
 KJR—Silver Strains; Greater Washington Hour
 KNX—Watanabe & Archie; Songs
 KFWB—Nip and Tuck; Hilarities
 KECA—Records; Dr. Hopkins
 KFOX—Eb and Zeb; 7:15, Bobby & Betty
 KFSD—Romance of Melody; Sonny & Buddy
 KSL—Memory Garden; Studio Prog.

7:30 to 8:00 P. M.

*KPO & network—Paul Whiteman's Music Hall
 KGO—Clef Dwellers; 7:45, Pan Americana
 KYA—Story Teller; Louise Taber Gold Rush Days
 KTAB—Ice Hockey
 KLX—Helen Parmelee, pianist; Studio Program
 KROW—Accordionist; Old-Fashioned Girl
 KGGC—Jeanne Carole; Records
 KQW—Italian Radio Theatre
 *KFRC & network—Vincent Lopez Orch.; 7:45, Fat Waller's Rhythm Club
 KOL—Speaker Stevenson to 7:45
 KVI—Dr. R. M. Mellor to 7:45
 KOIN—Jimmy Allen; Wanderer
 KJR—Program; Sweethearts Parade
 KNX—In-Laws; King Cowboy
 KFWB—Syncopters
 KFOX—Boy Detective; Vagabonds
 KECA—Hawaiian Group

KFSD—Moments of Melody
 KGB—Comedy Stars to 7:45
 KSL—Studio; 7:45, Sports

8:00 to 8:30 P. M.

*KPO & network—Amos 'n' Andy; 8:15, Standard Symphony Hour
 KGO—Pan Americana; 8:15, College Daze
 KYA—Orchestra; Musical Milkman
 KTAB—Ice Hockey
 KLX—Jewel Box; Amer. Legion Talk
 KROW—Latin-American Program
 KGGC—Spanish-American Program
 KQW—Lena Leland; Sportolog
 *KFRC & network—Myrt & Marge; 8:15, Little Jack Little's Orchestra
 KOIN—8:15, Comedy Stars
 KJR—8:15, Jack & Melody Maids
 KOL—8:15, Comedy Stars
 KVI—8:15, Souvenirs
 KNX—June Irwin; Adierkans
 KFWB—Welcome Lewis; Orchestra
 KECA—Old New England Whaling; Records
 KFOA—Talent Discovery Program
 KFSD—Jimmie Allen; Studio
 KSL—8:15, Mirth Parade

8:30 to 9:00 P. M.

*KPO & network—Standard Symphony Hour
 KGO—Eddie Duchin's Orchestra
 8:45, Big Ben Dream Dramas
 KYA—Tom Coakley's Orch.; Leon Mojicas Orchestra
 KTAB—Interlude; Vocalist
 KLX—All-Star Sports; 8:45, Studio
 KROW—Italian Program
 KGGC—Concert; Timely Tunes
 KQW—Musical Comedy Hi-Lites
 *KFRC & network—Camel Caravan
 KJR—Popular Concert
 KNX—Opera Hour
 KFWB—Jack Joy's Orchestra
 KFOX—Organ & Piano; Cecil & Sally
 KECA—Records
 KFSD—Ratliff's Orchestra
 KOA—Sports on Tap; Studio

9:00 to 9:30 P. M.

*KPO & network—Standard Symphony Hour; 9:15, Winning the West
 KGO—Geo. Olsen's Orchestra
 KYA—Sports Parade
 KTAB—Nevada Nighthiders
 KLX—Melodies; 9:15, Violinist
 KROW—Italian Program; Records
 KGGC—News; Wyoming Cowboys
 KQW—Band Concert
 *KFRC & network—Al Kavelin Orchestra
 KFRC—9:15, S. F. Junior C. of C.
 KOL—Krausmeyer & Cohen
 KOIN—Krausmeyer & Cohen to 9:15
 KVI—Krausmeyer & Cohen; Mem'r's
 KJR—News; Charlie Kent Singers
 KNX—News; Mona Lowe
 KFOX—Beverly Hillbillies
 KFWB—Nick Stuart's Orchestra
 KECA—Story Teller; Records
 KFSD—Lewis Prog.; Aztec Half-Hour
 KGB—Nino Marcelli & Symphony
 KSL—9:15, Ridge Roamers
 KOA—Comedy Stars; Orchestra

9:30 to 10:00 P. M.

*KPO & network—Winning the West
 KPO—9:45, Book Parade
 KGO—Dance Music
 *KGO & network—9:45, Dancing in Twin Cities
 KYA—Troubadour; 9:45, News; 9:55, The Answer Man
 KTAB—News; Velder Players
 KLX—News; California Rangers
 KROW—KROW Varieties
 KGGC—Dance Tunes; Singers of Songs
 KQW—Dance Frolic
 *KFRC & network—Orchestra
 KOL—Hollywood News; 9:45, News

KVI—News; Evening Meditations
 KOIN—Serenader
 KJR—Uncle Sam's Exchange; Orch.
 KHQ—9:45, Crazy Wells
 KOMO—9:45, Romance Time
 KGW—9:45, Edwards Furn. Prog.
 KFWB—Slumbertime
 KNX—Music; The Crocketts
 KFOA—Beverly Hillbillies
 KECA—Records
 KFSD—Aztec Half-Hour to 9:45
 KGB—Orchestra
 KSL—Leon Navarro's Orchestra
 KOA—Country Club Orchestra

10:00 to 10:30 P. M.

*KPO & network—Richfield Reporter; 10:15, Waltz Time
 KGO—Music Box
 KYA—Drama
 KTAB—Vern Walton's Orchestra
 KLX—Dance Music
 KROW—Varieties; Sport Hilites
 KGGC—Ten o'Clock Review
 KFCR—News to 10:10
 *KFRC & network—To be announced; 10:15, Fred Skinner, vocalist
 KOL—Dance Music
 KGW—10:15, Tolman, Shelly, Johnson
 KOMO—10:15, Royal Seven
 KFI—10:15, Four Black Birds
 KFWB—News; Organist
 KNX—Crocketts
 KECA—Records to 10:15
 KFOX—News; Organ
 KGB—News to 10:10
 KSL—Orchestra; Kalawala Boys
 KOA—Dance Orchestra

10:30 to 11:00 P. M.

*KPO & network—Waltz Time; 10:45, Tom Coakley's Orch.; 10:55, News
 KGO—Press-Radio News; 10:35, Williams-Walsh Orchestra
 KYA—Dance Orchestra
 KTAB—Ray Teller's Orchestra
 KLX—Dance Music
 KROW—Quiet Harmonies
 KGGC—Ten o'Clock Review
 *KFRC & network—Orville Knapp's Orchestra
 KOL—10:45, American Weekly
 KOIN—Orchestra
 KOMO—Moonlight Melodies
 KGW—10:45, Bart Woodyard's Orch.
 KJR—10:55, Memory's Garden
 KNX—Pontrelli's Orchestra
 KFWB—Tex Howard's Orchestra
 KFOX—Tex Howard's Orchestra

11:00 to 11:30 P. M.

KPO—Freddie Bergin's Orchestra
 *KGO & network—Ted Fio-Ritto's Orchestra
 KYA—Sandman Organ
 KTAB—Organ Concert
 KLX—Stuart Hamblen's Roundup
 KROW—Dance of the Hour
 *KFRC & network—Dick Jurgen's Orchestra
 KOIN—11:15, Anthony's Columbians
 KOMO—Orchestra
 KHJ—Organ
 KNX—Pontrelli's Orchestra
 KFWB—Nick Stuart's Orchestra
 KFOX—Dance Orchestra

11:30 to Sign Off

*KGO & network—Jimmy Grier's Orchestra
 KPO—Chas. Runyan, Organist
 KYA—Organ
 KTAB—Dansapations
 KLX—Stuart Hamblen's Roundup
 KFRC—Organ Recital
 KOIN—Organ Recital
 KVI—Organ; News and Tips
 KJR—Till Tomorrow
 KHJ—Organ and Records
 KFWB—Dance Orchestra
 KFOX—Freddie Carter's Orchestra
 KGB—Organ
 KJBS—12:01, Owl Program to 7 a.m.

FRIDAY Programs

Dec. 21, 1934

7:30 to 8:00 A. M.

•KPO & network—Financial Service; Tom Mitchell, baritone
KGO—Betsy Brunn; Johnny O'Brien
KYA—Music; Unique Prog.
KTAB—The Texans
KROW—Commuters Clock
KJBS—Alarm Klok Klub
KQW—Breakfast Hour
KGDGM—Gilmore Oil Program
KFRC—Seal Rocks Broadcast
KVI—Talk; Varieties
KHQ—7:45, Crazy Wells
KGW—Ronald Buck
KJR—Market Quotation; 7:45, Shadows on the Clock
KEX—Varieties
KOL—Organ Program
KFI—Stocks; 7:45, Church
KHJ—Records and Stock Reports
KNX—Bill Sharples Breakfast Club
KECA—Bible Fellowship to 7:45
KGB—Seven O'Clock Club
KSL—Morning Melodies

8:00 to 8:30 A. M.

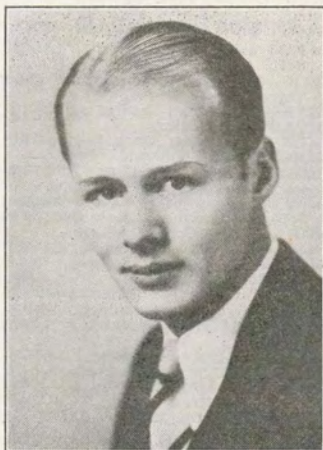
•KPO & netwk—NBC Music Appreciation Hour
KGO—Crosscuts Log o' the Day
KYA—Christian Science Reading; 8:15, Mr. and Mrs. Reader
KTAB—Shipping News
KLX—Records; 8:20, Stocks
KROW—Recordings
KJBS—Morning Varieties
KQW—Morning Melodies
KGDGM—Serenaders; Records
KFRC—Recordings
*KFRC & network—8:15, Illinois Wesleyan Choir
KOL—8:15, Cecil and Sally
KVI—Crazy Mountaineers; Specials
KOIN—Rhythms to 8:15
KOMO—Morning Reveries
KNX—Electrical Transcriptions
KECA—Recordings
KGB—Recordings to 8:15
KSL—Studio Ensemble; Good Morning Judge

8:30 to 9:00 A. M.

•KPO & netwk—Music Appreciation Hour
KGO—Crosscuts Log o' the Day
KYA—Feminine Notebook; Concert
KTAB—Radio Shopper's Digest
KLX—Covered Wagon Jubilee
KROW—Novelty Review
KQW—Morning Concert
KGDGM—Recordings; Health Talk
KJBS—Dance Music
*KFRC & netwk—Country Church
KOMO—Harp Melodies; 8:45, Mary's Friendly Garden
KNX—To be announced
KECA—Recordings
KSL—Cal-O-Dine Program

9:00 to 9:30 A. M.

KGO—Kahnversation with Kay; Wm. Cowles, pianist
•KPO & network—Fields & Hall; 9:15, To be announced
KYA—Concert; Prudence Penny
KTAB—Hour of Prayer
KLX—Shopping List
KROW—Romance; Vocal Varieties
KJBS—Kings Men; Records
KGGC—Recordings
KQW—Tuneful Topics; Congoin
KGDGM—Records; 9:15, Personalities
*KFRC & network—Voice of Experience to 9:15
KFRC—Congoin Dance Music
KOL—9:15, Prudence Penny
KHQ—Home Comfort to 9:15
KJR—9:17, Early Echoes
KVI—9:15, The Gumps
KNX—Health Talk; Lal Chan Mehra
KECA—Recordings



IVAN DITMARS
KOL—10:05 P.M.

KGB—9:15, Organ Melodies
KFSD—9:15, Good Cheer
KSL—9:15, The Gumps

9:30 to 10:00 A. M.

•KPO & network—National Farm and Home Hour
KGO—Improve Your Home; Sam Moore, guitarist
KYA—Lovers Lane; Waltz Time
KTAB—Health Talk
KLX—Clinic of the Air
KROW—Diet and Health
KJBS—Faye Ward's Program
KQW—Faye Ward
KGGC—Morning Melodies
KGDGM—News; 9:45, Records
*KFRC & network—Betty Crocker
KFRC—9:45, Crazy Wells
KOL—9:45, Beautiful Melodies
KVI—9:45—Mystic Melodies
KHQ—Walt & Marion; Tull & Gibbs
KGW—Vocalist; Homemaker
KJR—News; Jewel Box
KFI—Helen Guest, ballads; News
KHJ—9:45, News Items to 9:50
KNX—Music; 9:45, News
KGB—9:45, News to 9:50
KSL—Jennie Lee

10:00 to 10:30 A. M.

KPO—Golden State Menu Flashes; 10:15, News Reporter
•KGO & netwk—Press-Radio News; 10:05, Organ
KYA—Columbia on Parade; Music
KTAB—News; Bachelor; Bargains
KLX—Clinic; Stocks; News
KROW—Rhythm Review
KJBS—News; 10:05, Memories
KGGC—Cal King
KQW—News; Memories; Orchestra
KGDGM—Easy Chair; Records
*KFRC & network—Just Plain Bill
KFRC—10:15, Home Forum
KOIN—10:15, Air Shopping
KOL—10:15, Morning Melodies
KVI—10:15, Sons of the Pioneers
KGW—10:15, Crazy Crystals
KOMO—Jack & Jill
KJR—Home Makers Time; Woman in the Shoe
KFI—10:15, English Lesson
KNX—Eddie Albright's Family
KECA—Recordings to 10:15

KGB—10:15, Marie Golden, pianist
KSL—10:15, Recorded Program
KOA—10:15, Marietta Vasconcelles

10:30 to 11:00 A. M.

•KPO & network—Woman's Magazine of the Air
KGO—Horacio Zito's Orchestra
KYA—Organ Concert
KTAB—Health Talk; Shorty Burke
KLX—International Kiteae.
KROW—Morning Concert
KJBS—Dance Tunes; For the Ladies
KGGC—Hits of Today
KGW—Aunt Sammy; Music
KGDGM—So This Is Hollywood; Talk
*KFRC & network—Univ. of Calif.; 10:45, Art Kassel's Orchestra
KOL—Sue Allen Shopping to 10:45
KOIN—Air Shopping; Talk
KJR—Club Minutes; Serenader
KNX—Mary Holmes; 10:45, Rhythmic Encores
KECA—Chaparral Club; Records
KFSD—Mirth Parade; Studio
KOA—Best Foods; 10:45 Livestock and Produce
KSL—Recorded Program

11:00 to 11:30 A. M.

•KPO & network—Woman's Magazine of the Air
KGO—Magic of Speech
KYA—Organ Concert
KTAB—Fashion; Modern Rhythms
KROW—Health Talk; Spotlight
KLX—Records; Notes in Rhyme
KJBS—Dance Melodies
KQW—Light Classics
KGGC—Milady's Date Book; 11:15, Hawaiian Sketches
KGDGM—Organ Recital
*KFRC & network—Little French Princess; Helen Trent Romance
KOIN—This & That
KOL—Garden of the Air; News
KVI—The Observer; Melodies
KJR—Rhythm Rulers, recorded
KNX—Marshall Grant, Organist
KHJ—Beauty Program to 11:15
KECA—Spanish Lessons; 11:15, Frankie Patten pianist
KGB—To the Ladies

11:30 to 12:00 Noon

KGO—Edna Fischer, pianist; 11:45, Agricultural Bulletin
•KPO & network—Smackout; 11:45, Vic and Sade
KYA—Fashion Mirror; Snapshots
KTAB—Blue Moments
KLX—Anita & Orsco; Music
KROW—Latin-American Program
KGGC—Request Hour
KJBS—Dance Melodies
KQW—Popular Variety; News
KGDGM—Organ Recital
*KFRC & netwk—American School of the Air
KHQ—Organ
KJR—Measured Steps
KFI—Home Nursing Hints to 11:45
KNX—Spice of Life; Talk
KECA—11:45, Recordings
KFSD—Smiling Young Man; Studio

12:00 to 12:30 P. M.

KPO—News
•KPO & network—12:15, Western Farm and Home Hour
KGO—Agriculture; Financial; 12:20, Pair of Pianos
KYA—Scriptures; 12:03, Concert
KTAB—Talk; Agriculture Period
KLX—Dance Music
KROW—Latin-American Program
KQW—Popular Orchestra
KJBS—Song Hits
KGGC—Request Hour
KGDGM—Friendship Club; Records
KVI—Mkt. Specials; Headlines

* KFRC & network—Philadelphia Orchestra
 KOL—The Carnival Hour
 KOMO—Music; 12:15, Vagabonds
 KHQ—Spokane Shopper Program
 KJR—Tunes; Grain Reports to 12:15
 KGW—Music; Meier & Frank
 KFI—Market Reports to 12:15
 KECA—12:15, News
 KNX—News; 12:15, Congoin
 KFSD—Wm. Cowles, pianist, 12:15

12:30 to 1:00 P. M.

• KPO & network—Western Farm and Home Hour
 KGO—Pair of Pianos; 12:45, Commonwealth Club Luncheon
 KYA—Noonday Concert
 KTAB—Echoes of Portugal
 KLX—Don Brose; Recordings
 KROW—Calif. Farm Hour; Records
 KJBS—Dance Hits
 KGGC—Mountain Music; Melodies
 KQW—Orchestra
 KGDM—Pacific Islanders
 * KFRC & network—Philadelphia Orchestra
 KOL—The Carnival Hour
 KVI—News & Comment to 12:45
 KOMO—Viennese Vagabonds; Cowboy Joe
 KGW—News Flashes; Pianist
 KHQ—Stepping Along; Studio
 KJR—Dr. Matthews
 KECA—Concert Favorites, records
 KOA—Brown Palace Orchestra

1:00 to 1:30 P. M.

• KPO & network—Betty & Bob; 1:15, East and Dumke
 KGO—Commonwealth Club Luncheon
 KYA—Women's Institute of the Air; 1:15, Musical Strings
 KTAB—Radio Frolic
 KLX—Records; 1:15, Martha Lee
 KROW—Concert Melodies
 KJBS—Stocks; Recordings
 KQW—Friendly Hour
 KGDM—Records; Watchtower
 * KFRC & network—Philadelphia Orchestra
 KOL—1:15, Julie Day
 KHQ—1:15, Sylvia Gray
 KJR—Ch. of Commerce Lunch
 KOMO—1:15, Tea Times Tales
 KGW—1:15, Dental Clinic
 KNX—Pontrelli's Orchestra
 KFI—1:15, Beverly Hillbillies
 KFSD—Stocks; 1:15, Studio Prog.
 KOA—1:15, Crazy Hotel Orchestra

1:30 to 2:00 P. M.

• KPO & network—Oxydol's Own Ma Perkins; 1:45, Betty Marlowe, talk
 KGO—Ann Warner's Chats
 KYA—Modern Maestros
 KTAB—Jean Kent, Economics
 KLX—Popular Concert
 KROW—Oakland Public Schools; Oklahoma Ramblers
 KJBS—Dance Orchestra
 KQW—Concert
 KGDM—Conservatory Concert
 * KFRC & network—Philadelphia Orchestra
 KJR—Renovize; The Sun Dial
 KOIN—Amie Brunn; Scrapbook
 KNX—Pontrelli's Orchestra
 KFSD—Old Time Program

2:00 to 2:30 P. M.

• KPO & network—Al Pearce and His Gang
 KGO—To be announced; 2:15, Mid-Afternoon Musicale
 KYA—International Troubadours
 KTAB—Globe Trotter; Romancin'
 KLX—Recordings; Romance
 KROW—Dance Matinee
 KQW—Dance Matinee
 KJBS—Better Business Talk; 2:15, Events of Interest
 * KFRC & network—Happy Go Lucky Hour

KGDM—Records; News
 KJR—Salon Hour
 KNX—The Bookworm
 KECA—Classic Hour
 KFSD—2:15, Studio Program
 KSL—Men of Note; Dental Clinic
 KSL—Theater Reporter; 2:05, Al Pearce Gang; 2:15, Jackie Heller

2:30 to 3:00 P. M.

• KPO & network—Al Pearce Gang
 KGO—Mid-Afternoon Musicale
 KYA—Lost & Found; Modern Notes
 KTAB—Talk; 3-4 Time
 KLX—Better Business Talk; 2:35, Stocks; 2:40, Records
 KROW—Dance Matinee
 KJBS—Seiffert Players; Orchestra
 KQW—John Seiffert Players; Dance
 KGDM—The Romancer
 * KFRC & network—Happy Go Lucky Hour
 KJR—Salon Hour
 KNX—Music
 KFCA—Recordings
 KFSD—2:45, Studio Program
 KSL—Milton Charles; Miniatures
 KOA—Nellie Revell; Happy Jack

3:00 to 3:30 P. M.

• KPO & network—Langendorf Pictorial; 3:15, Mickey Gillette
 KGO—Jack Berger's Orchestra
 KYA—Band Concert
 KTAB—Notices; Chinese News
 KLX—Musical Jigsaw; Records
 KROW—Fay Lanphier; Music
 KJBS—Radio News; Records
 KQW—Stocks & Bonds; Music
 KGDM—Recordings
 * KFRC & network—Femline Fancies
 KJR—Easy Chair; Enchanted Isles
 KHQ—Business & Pleasure; Club Bulletin
 KQW—Concert Trio to 3:15
 KNX—Federation of Women's Clubs
 KECA—Recordings
 KSL—Songs of Long Ago; 3:15, Santa Claus
 KOA—Hotel Astor Orch.

3:30 to 4:00 P. M.

• KPO & network—Mickey Gillette's Music
 KGO—The Well Dressed Woman; 3:45, Singing Strings
 KYA—Symphony Highlights; Orch.
 KTAB—Sophistication; 3:45, Picture Preview
 KLX—SERA Orchestra
 KROW—Spanish Tunes; Records
 KJBS—Front Page Drama; Records
 KQW—Variety Program; Music
 KGDM—Ernie Cruz; Records
 * KFRC & network—Frank Castle's Matinee
 KOIN—Newspaper of the Air
 KOL—Harriet Linkns; Studio Prog.
 KHQ—King's Men; Happy Feet
 KOMO—String Trio
 KFI—Ann Warner's Chats
 KNX—Fletcher Wiley
 KGB—Stocks; 3:55, Along the Airways
 KSL—Junior Hour; Records; News
 KOA—News; Soloist

4:00 to 4:30 P. M.

• KPO & network—Jack & Loretta Clemens; 4:15, Jack Denny's Orch.
 KGO—Beaux Arts Trio
 KYA—Matinee Idol; Orchestra
 KTAB—"Jewish Date Book"; Bay Meadows Race
 KLX—Records; Bro. Bob's Club
 KROW—Waltz Time; Ross Love
 KJBS—Dance Orchestra
 KGDM—Gilmore Old Program
 KQW—Star Reporter; Music
 KFRC—Stock Reports to 4:05
 * KFRC & network—Russo's Orch.; 4:15, Univ. of the Air
 KHQ—4:15; News Album

KOL—Studio Program to 4:15
 KOIN—Newspaper of the Air
 KVI—Happy Birthday Club to 4:15
 KHQ—4:15, News Album
 KJR—Friendly Chat
 KQW—Tea Dances
 KFI—Calif. Teachers Assn. to 4:15
 KNX—Haven of Rest
 KECA—4:15, Recordings
 KSL—Payroll Builder
 KOA—Comedy Capers; 4:15, Ivory Stamp Club

4:30 to 5:00 P. M.

• KPO & network—King's Guard
 KPO—4:45, News
 KGO—For Girls and Boys Only
 KYA—Orchestra
 KTAB—Keep Smiling Revue
 KLX—Club; 4:45, Health School
 KROW—Lee Davis & Gang
 KJBS—Orchestra to 4:45
 KQW—Story Time; 4:45, Dog Stories
 KGDM—Bob Allen; Records
 * KFRC & network—Danny Russo's Orchestra; Between the Bookends
 KVI—Santa Claus to 4:45
 KOIN—Hollywood Reporter to 4:45
 KOMO—4:45, Cherniavsky's Orch.
 KGW—4:45, Cherniavsky's Orch.
 KJR—Snapshots
 KHQ—N. W. on Parade; Orchestra
 KFI—Organ recital
 KNX—Your Personal Advisor; U.S.C.
 KECA—4:45, King's Guard
 KFOX—4:45, Recordings
 KSL—Adventures of Robin Hood; 4:45, Orphan Annie
 KOA—Skit; 4:45, Orchestra

5:00 to 5:30 P. M.

• KPO & network—Studio Chatter: Clinton Twiss, Old Eavesdropper
 KGO—High School Hour; 5:15, To be announced
 KYA—Children's Hour
 KTAB—Lauretta La Marr; Santa Claus
 KLX—Pianist; Bill, Mack, Jimmie
 KROW—Memory Lane; Records
 KQW—Popular Concert
 KGGC—Echoes; Studio Frolic
 KFRC—Dr. J. C. Campbell
 * KFRC & network—5:15, Billy Bachelor
 KVI—Deerslayer to 5:15
 KJR—Drama; 5:15, Melodies
 KHQ—Flirtations; Model Boots
 KOIN—Donald Ayer, Adventures to 5:15
 KOMO—Moments of Melody; 5:15, Thrills of Tomorrow
 KNX—Synagogue of the Air
 KFI—Rev. Chas. E. Fuller
 KSL—Pulman Tailors; 5:15, Tarzan
 KOA—Cities Service Concert

5:30 to 6:00 P. M.

KPO—Fashion Flashes
 • KPO & network—5:45, Ricardo and his violin
 KGO—Ivory Stamp Club; 5:45, Little Orphan Annie
 KYA—Metropolitans; 5:45, Campbell
 KTAB—Dr. Thompson, talk
 KLX—Covered Wagon Jubilee
 KROW—Eating Your Way to Health
 KGGC—Dance Echoes; Irish Gems
 KQW—Popular Orchestra
 * KFRC & network—Vincent Lopez' Orchestra
 KOIN—Merry Men to 5:45
 KHQ—Wm. Cowles, pianist; to 5:45
 KJR—Tarzan; Orphan Annie
 KOMO—Stamp Club to 5:45
 KGW—Ivory Soap to 5:45
 KFI—Ivory Stamp Club to 5:45
 KNX—Og, Son of Fire; 5:45, Orphan Annie
 KECA—Tuning in with the Children
 KFSD—Studio; Farley's Rangers
 KSL—Harry Clarke, soloist and Organ; Krausemyer and Cohen
 KOA—Cities Service Concert

6:00 to 6:30 P. M.

•KPO & network—To be announced
 KGO—Five Cards; Coquettes, vocal trio, guitar and piano
 KYA—Man About Town; Orch.
 KTAB—Organ; News
 KLX—Arion Trio
 KROW—News; 6:15, Club Castro
 KGGC—Dinner Dance Review
 KQW—Department of Agriculture; 6:15, Popular Program
 *KFRC & network—March of Time
 KJR—News; Notes in Rhyme
 KNX—News; Concert Group
 KFWR—News; Mysteries; Fun Fest
 KECA—Educ. Prog.; 6:15, News
 KFOX—News; Trio; Al & Molly
 KFSD—Junior Chamber of Commerce; Dinner Music

6:30 to 7:00 P. M.

•KPO & network—Armour Program, featuring Phil Baker
 KGO—Mindways; 6:45, Air Adventures of Jimmy Allen
 KYA—Cyrus Trobbs's Orchestra
 KTAB—Sports; Affairs of Leo
 KLX—Arion Trio
 KROW—Ne'er Do Well
 KGGC—Air Theater; Records
 KQW—State Market Reports; 6:45, Thorobred Quarter Hour
 *KFRC & network—Hollywood Hotel, featuring Dick Powell, Ted Fio-Rito's Orchestra and Guest Star KJR—Evergreen Theatres
 KNX—Dinner Dance; 6:45, Adventures of Jimmie Allen
 KFWR—Fun-Fest; Jimmie Allen
 KECA—Wesley Tourtellotte, organist
 KFOX—School Kids; Jimmie Allen
 KFSD—Dinner Music

7:00 to 7:30 P. M.

•KPO & network—The First Nighter, drama, featuring Don Ameche, June Meredith
 KGO—Barbara Merkle; 7:15, Chester Rowell
 KYA—Ernie Smith's Sport Page; 7:15, Tales of the Turf
 KTAB—Italian News; Sport of Kings
 KLX—News; 7:15, Lovable Liars
 KROW—Hammond; L'Italia News
 KQW—Weather; Voice of Portugal
 KGGC—German-American Program
 *KFRC & network—Hollywood Hotel
 KJR—Concert; Dollars & Sense
 KFWR—Talk; Synopsators
 KFOX—Eb & Zeb; Bobby & Betty
 KNX—Watanabe & Archie; Raiput
 KECA—Scotland in Song and Story; Records

7:30 to 8:00 P. M.

KGO—Comedy Stars of Hollywood
 •KGO & network—7:45, Veterans of Foreign Wars
 KPO—Packard Fiesta
 KYA—Cowboys; Louise Taber
 KTAB—Socialist Labor Party
 KLX—Silver Strains; 7:45, Soprano
 KROW—L'Italia Echoes of Italy
 KGGC—Records; Organalities
 KQW—Italian Theatre
 *KFRC & network—Borden's Friday Frolic
 KOMO—Romance Time
 KHQ—U. S. & World Affairs
 KFI—Packard Fiesta
 KFWR—Chas. Kaley & Burt Fiske; Comedy Stars
 KNX—The In-Laws; King Cowboy
 KFOX—Boy Detective; Vagabonds
 KECA—Recordings
 KSL—Crazy Crystals; Alka Seltzer

8:00 to 8:30 P. M.

•KPO & network—Amos 'n' Andy; 8:15, Red Davis, dramatic skit
 KGO—Ricardo and his violin; 8:15, College Daze

KYA—Erev Shaboth; Interlude
 KTAB—Sports; 8:15, Fishin' Fool
 KLX—World Revue
 KROW—Echoes of Italy; Skit
 KGGC—Spanish-American Program
 KQW—Church Choir
 *KFRC & network—Myrt & Marge; 8:15, Edwin C. Hill
 KJR—Spice of Life; 8:15, Carefree
 Capers
 KNX—Songs; Elec. Trans.
 KECA—Recordings
 KFWR—Welcome Lewis; Pioneers
 KFOX—Poster Rucker & Trio
 KFSD—Jimmie Allen to 8:15

8:30 to 9:00 P. M.

•KPO & network—The Intimate Revue
 KGO—Echoes from Orchestra Pit
 KYA—Orchestra; Serenader
 KTAB—To be announced
 KLX—Sports; 8:45, Tonic Tunes
 KROW—Happy Harmonies; Orch.
 KGGC—Concert; Timely Tunes
 KQW—Waltz Favorites
 *KFRC & network—Court of Human Relations
 KJR—Yesterday, Today and Tomorrow
 KNX—Homer Canfield, songs; Talk
 KECA—Recordings
 KFWR—Jack Joy's Orchestra
 KFOX—Melodier; 8:45, Cecil and Sally
 KFSD—Studio Program

9:00 to 9:30 P. M.

•KPO & network—Caswell Concert
 KPO—9:15, Night Editor, Hal Burdick, the story teller
 KGO—Ralph Kirby; 9:05, Montclair Hotel Orchestra
 KYA—Drama; 9:15 Neighbors
 KTAB—Nevada Nightherders
 KLX—Krausmeyer & Cohen; Black and White Melodies
 KROW—Orchestra; Stories
 KGGC—News; 9:05, Cowboys
 KQW—San Jose State Debate
 *KFRC & network—Scott Fisher's Orchestra
 KJR—9:15, Hobbies, Wilbur Hall
 KOL—Speaker Stevenson to 9:15
 KOIN—Goal Post Highlights to 9:15
 KVI—Elk Stocking Fillers
 KOMO—9:15, Montag Fireside Hour
 KHO—9:15, Serenade
 KGW—9:15, Fireside Hour
 KJR—News to 9:15
 KNX—News: 9:15, Amagon
 KFI—9:15, Organ Recital
 KFWR—Nick Stuart's Orchestra
 KFOX—Beverly Hillbillies
 KFSD—Furmbilt; 9:15, Orchestra
 KGB—9:15, Hobbies
 KSL—Organ to 9:15
 KOA—Studio Program

9:30 to 10:00 P. M.

•KPO & network—To be announced
 KPO—9:45, The Phillistine
 KGO—Pick and Pat
 KYA—Lyric Quartet; News
 KTAB—News; To be announced
 KLX—News; Road Information; Ran Wilde & Orchestra
 KROW—Buck Royce Cowboys
 KGGC—Recordings; Cowboys
 KQW—American Legion; Drama
 *KFRC & network—Hal Grayson and Orchestra
 KOL—9:45, News; Editorial
 KVI—News Flashes; Stocking Fillers
 KOIN—Merry Gentlemen to 9:45
 KJR—"Purple Ray," Drama to 9:45
 KHQ—Melodies; Romance
 KOMO—9:45, Moments of Melody
 KFI—Organ; 9:45, The Phillistine
 KFWR—Slumbertime
 KNX—Musical Headlines; Fights
 KFOX—Beverly Hillbillies
 KECA—9:45, Records
 KSL—Wrestling Matches

10:00 to 10:30 P. M.

•KPO & network—Richfield Reporter
 KPO—10:15, Sportlight Review
 KGO—Will Aubrey; 10:15, Williams-Walsh Orchestra
 *KYA—Cabbing About; Rhyme Land
 KLX—Recorded Music
 KROW—Royal Hawaiians
 KGGC—Ten o'Clock Review
 KFRC—News; 10:10, Elec. Trans.
 *KFRC & network—10:15, Joe Sullivan, pianist
 KOIN—Journal Friday Show
 KOL—Ivan Ditmars Organ
 KVI—Elk's Stocking Fillers
 KOMO—10:15, To be announced
 KHQ—10:15, Dance Orchestra
 KJR—Dance Orchestra
 KNX—Fights, Hollywood Stadium
 KFWR—News; Organ Recital
 KECA—Musical Celebrities
 KGB—News; To be announced
 KFOX—News; Organ
 KSL—Wrestling Matches; 10:15, Melody Lane
 KOA—Broadmoor Country Club Or.

10:30 to 11:00 P. M.

KPO—Orchestra; Organ; News
 •KGO & network—Dance Orchestra; 10:55, Press-Radio News
 KYA—Dance Orchestra
 KTAB—Dance Orchestra
 KROW—Golden Memories
 KGGC—Ten o'Clock Review
 *KFRC & network—Orville Knapp's Orchestra
 KOIN—Club Victor
 KGW—Orchestra
 KOMO—Lifebuoy Program; Orch.
 KJR—Till Tomorrow
 KFWR—Tex Howard's Orchestra
 KNX—Fights; 10:45, Orchestra
 KFOX—Tex Howard's Orchestra

11:00 to 11:30 P. M.

•KGO & network—Ted Fio-Rito's Orchestra
 KPO—Freddie Bergin's Orchestra
 KYA—Bobbie Gram's Orchestra
 KTAB—Dance Orchestra
 KROW—Dance Music
 *KFRC & network—To be announced
 KOIN—Kelly's Kabbelleros
 KGW—De Honey's Orchestra
 KOMO—Dance Orchestra
 KFWR—Nick Stuart's Orchestra
 KFOX—Nick Stuart's Orchestra

11:30 to 12:00 Midnight

•KPO & network—Bart Woodyard's Orchestra
 KGO—Organ Concert
 KGB—Dance Orchestra
 KYA—Organ
 KTAB—Dancesapations
 KFRC—Dick Jurgen's Orch.
 KVI—Dance Orchestra
 KJR—Reflections of Romance
 KFWR—Dance Orchestra
 KFOX—Freddie Carter's Orchestra

12:00 to Sign Off

KTAB—D-X Program
 KROW—Midnight Vagabond
 KGDM—Music and News
 KHJ—Recordings
 KGB—Records
 KJBS—Owl Program

A BRAND NEW SHOW
 —FOR A GRAND OLD BRAND
 THE *Borden*
 FRIDAY FROLIC
 KFRC 

7:00 to 7:30 A. M.

- KPO—Morin Sisters, vocal trio; 7:15, Gospel Singer
- KYA—Musical Clock
- KTAB—Cuckoo Club; Stocks
- KROW—Commuters Clock
- KJBS—Alarm Klok Klub
- KQW—The Breakfast Hour
- KGDM—Breakfast News; Records
- KFRC—Records; 7:25, Stocks
- KOL—Organ Program
- KVI—Radio Gospel League
- KHQ—Morning News
- KFI—Louis Rueb, exercises
- KHJ—Recordings
- KNX—Bill Sharples Breakfast Club
- KECA—Recordings to 7:15
- KGB—Seven o'Clock Club
- KFSD—Early Birds; 7:15, Pep and Ginger
- KSL—News; Music

7:30 to 8:00 A. M.

- KPO & network—Financial Service; 7:45, To be announced
- KGO—Morning Parade
- KYA—Musical Clock
- KTAB—The Texans
- KROW—Commuters Clock
- KJBS—Alarm Klok Klub
- KQW—The Breakfast Hour
- KGDM—Gillmore Oil Program
- KFRC—Seal Rocks Broadcast
- KOL—Organ Program
- KVI—Varieties; Musical Bracer
- KGW—Ronald Buck to 7:45
- KJR—Market Quotations; Shadows on the Clock
- KOMO—7:45, Stradivarieties
- KFI—Stock Quotations to 7:45
- KHJ—Recordings
- KNX—Bill Sharples Breakfast Club
- KECA—Bible Fellowship; Records
- KFSD—7:45, Studio Program
- KGB—Club; 7:55, Program Resume
- KSL—Morning Music

8:00 to 8:30 A. M.

- KPO & network—Johnny O'Brien, harmonica; 8:15, The Vass Family
- KGO—Crosscuts, Log o' the Day
- KYA—Christian Science Reading; Mr. and Mrs. Reader
- KTAB—Shipping News; Santa Claus
- KLX—Records; Crazy Crystals; Stocks
- KROW—Commuters Clock
- KJBS—Recordings; Varieties
- KQW—Melodies and Varieties
- KGDM—Serenader; Records
- * KFRC & network—Geo. Johnson's Orchestra
- KOL—Organ; 8:15, Cecil and Sally
- KVI—8:15, Market Specials
- KOMO—Morning Reveries
- KFI—Program; Tull & Gibbs
- KFJ—Church Quarter Hour to 8:15
- KNX—World Revue
- KECA—8:15, Memories of the Waltz
- KOA—Galaxy of Stars to 8:15

8:30 to 9:00 A. M.

- KPO & network—Down Lovers' Lane
- KGO—Crosscuts Log o' the Day
- KYA—Morning Concert
- KTAB—Radio Shopper's Digest
- KLX—Covered Wagon Jubilee
- KROW—Novelty Revue
- KJBS—Records; Melodies
- KGDM—Recordings; Talk
- KQW—Morning Concert
- * KFRC & network—Hollywood Country Church
- KHQ—Comments; Home Comfort
- KOMO—Vagabonds; Musical Madcaps
- KFI—Musical Program
- KNX—Song Bag; Talk
- KECA—Recordings
- KSL—Glee Club; Concert Miniatures



NADINE CONNOR

KHJ—Vocalist

9:00 to 9:30 A. M.

- KGO & netwk—Armchair Quartet
- KGO—9:15, Organ Concert
- KPO—News
- KPO & network—9:15, Genia Fonariova, soprano
- KYA—Concert; Prudence Penny
- KTAB—Hour of Prayer
- KLX—Shopping List
- KROW—Romance; Vocal Varieties
- KJBS—Vocalists; Bargain Basement
- KGCC—Recordings
- KQW—Tuneful Topics; Goin' In
- KGDM—Cowboy; Recordings
- * KFRC & netwk—Instrumentalists; 9:15, Orientale
- KOL—9:15, Prudence Penny
- KVI—Mountaineers; Mystic Melodies
- KOMO—Musical Madcaps to 9:15
- KGW—Cooking School to 9:15
- KHJ—Musical Gems; Tull & Gibbs
- KJR—9:15, Early Echoes
- KFI—Medical Talk; 9:15, News
- KNX—Organ; 9:15, Melody Race
- KFSD—9:15, Good Cheer Program
- KSL—9:15, Jennie Lee

9:30 to 10:00 A. M.

- KPO & network—Farmers' Union Program
- KGO—Organ Concert; 9:55, Press-Radio News
- KYA—Lover's Lane; Waltz Time
- KTAB—Dr. Thompson, health talk
- KLX—Clinic of the Air
- KROW—Diet and Health
- KJBS—For the Ladies; Concert
- KGCC—Morning Melodies
- KQW—Gems of Melody
- KGDM—News; 9:45, Minstrels
- * KFRC & network—Abram Chasins, Pianist
- KOL—Julie Day; Studio
- KOIN—This and That
- KJR—News; Spice of Life
- KNX—Amagon; 9:45, News
- KECA—L. A. School Program

10:00 to 10:30 A. M.

- KPO & network—Farmers' Union
- KGO—Pair of Pianos
- KYA—Columbia Parade; Harmonies
- KTAB—Bachelor; Bargain
- KROW—Rhythm Revue

- KLX—Clinic; 10:15, S. F. Stocks; 10:20, News Items
- KJBS—Radio News; Organ
- * GGC—Cal King
- KQW—News; Popular Orchestra
- KGDM—Kiddies Program
- * KFRC & network—George Hall's Orchestra
- KVI—10:15, Sons of Pioneers
- KOL—10:15, Morning Melodies
- KOIN—10:15, Air Shopping
- KJR—Music Shop
- KNX—Eddie Albright's Family
- KECA—City School Program

10:30 to 11:00 A. M.

- KPO—Interlude to 10:35
- KPO & network—10:35, Woman's Magazine of the Air
- KGO—NBC Farm Forum; 10:45, Words and Music
- KYA—Organ Concert
- KTAB—Health Talk; Shorty Burke
- KLX—International Kitchen
- KROW—Morning Concert
- KJBS—Records; Redwood Melodies
- KGCC—Hits of Today
- KQW—Aunt Sammy; Music
- KGDM—Records; Talk
- * KFRC & network—Esther Velas' Ensemble
- KVI—Amusement Tips to 10:45
- KOIN—Air Shopping to 10:45
- KGW—Mark Daniels, baritone
- KJR—Club Minutes; Uncle Hank
- KNX—Marshall Grant, Organist
- KECA—Classic Hour
- KOA—10:45, Livestock & Produce

11:00 to 11:30 A. M.

- KPO & network—Woman's Magazine of the Air
- KGO—Words & Music; Songfellows
- KYA—Organ
- KTAB—Blue Moments; Rhythms
- KLX—Recordings; Tonic Tunes
- KROW—Health Talk; Spotlight
- KJBS—Hits of the Past
- KGCC—Milady's Date Book; Music
- KQW—Light Classics
- KGDM—Organ Recital
- * KFRC & network—Dan Russo's Orchestra
- KOIN—This and That
- KOL—Garden of the Air; News
- KVI—The Observer to 11:15
- KQW—Studio Program
- KJR—Rhythm Rulers
- KNX—Musical Program
- * KECA—Classic Hour Records
- KOA—Words and Music; 11:15, Songfellows

11:30 to 12:00 Noon

- KPO & network—Don Pedro's Orchestra
- KGO—Financial Flashes; 11:35, Sam Moore, guitarist; 11:45, Agricultural Bulletin
- KYA—Dance Time; Snapshots
- KTAB—Four-Four Time; News
- KLX—Anita & Orsoco; Music
- KROW—Latin-American Program
- KJBS—Dance Orchestra
- KGCC—Request Hour
- KQW—Stocks and Bonds; Accordion; Theatre News
- KGDM—Organ Recital
- * KFRC & network—Round Towners
- KJR—Measured Steps
- KHQ—Organ Concert
- * KNX—Musical Auction; Talk
- KECA—Records
- KSL—Round Towners

12:00 to 12:30 P. M.

- KGO & network—High & Low; 12:15, Western Agriculture
- KPO—News; 12:15, Platt & Nierman, piano duo
- KYA—Scriptures, 12:03, Concert

KTAB—Talk; Agriculture Period
 KLX—Stocks; 12:05, Dance Music
 KROW—Latin-American Program
 KJBS—Instrumental and Vocal
 KQW—Popular Orchestra
 KGGC—Request Hour
 KGDM—Road Reports; Serenader
 *KFRC & network—Poetic Strings
 KOIN—Johnnie Walker's Scrapbook;
 Amle Brunn
 KVI—12:15, Front Page Headlines
 KHQ—12:15, Business and Pleasure
 KGW—12:15, Meler & Frank
 KJR—News; Grain Reports; Notes
 KNX—News; 12:15, Congo
 KFI—Fed. & State Market Reports
 to 12:15
 KECA—12:15, News Release
 KSL—Payroll Builder

12:30 to 1:00 P. M.

*KGO & network—Western Agriculture
 KPO—To be announced
 KYA—Noonday Concert
 KTAB—Echoes of Portugal
 KLX—Don Brose; Magic Harmony
 KROW—Band Concert; Records
 KJBS—Dance Matinee
 KGGC—Mountain Music; Band
 KQW—Market Reports
 KGDM—Records; News
 *KFRC & network—Buffalo Variety Workshop
 KHQ—Business & Pleasure; Drama
 KGW—News; Friendly Chat
 KJR—Uncle Frank's Children Mat.
 KNX—Concert Group
 KECA—Concert Favorites

1:00 to 1:30 P. M.

KGO—Vagabonds Quartet
 *KPO & network—To be announced
 KYA—Hawaiian Troubadours
 KTAB—Seventh Day Adventists
 KLX—Records
 KROW—Concert Melodies
 KJBS—Musical Novelties
 KQW—Friendly Hour
 KGDM—Recordings; The Bondons
 *KFRC & network—Emery Deutsch's
 Dance Rhythms
 KGW—Chat; Dental Clinic
 KJR—Uncle Frank's Children Mat.
 KNX—Pontrelli's Orchestra
 KFI—Organ Recital
 KOA—Weekend Review
 KSL—Payroll Builder

1:30 to 2:00 P. M.

*KGO & network—Handel's "Messiah"; Chorus of 100 voices
 KPO—To be announced
 KYA—Rhythm Princess
 KTAB—Jean Kent, Economics
 KLX—Records
 KROW—Spanish Serenade; Oklahoma Ramblers
 KJBS—Afternoon Popular Concert
 KQW—Afternoon Concert
 KGDM—The Bondons; Records
 *KFRC & network—Samuel De Jong's Orchestra
 KVI—Santa Claus to 1:45
 KOIN—Book of Life
 KJR—The Sun Dial
 KEA—Grain Reports; Records;
 Bookman
 KNX—Pontrelli's Orchestra

2:00 to 2:30 P. M.

*KGO & network—Handel's "Messiah"
 KPO—To be announced
 KYA—Don Valdemar's Orchestra
 KTAB—Dance Tunes; Romancin'
 KLX—Records
 KROW—Dance Matinee
 KJBS—Popular Dance Recordings
 KQW—Dance Matinee
 KGDM—Charley & Harry; News
 *KFRC & network—Little Jack
 Little's Orchestra
 KNX—Song Market

KCA—Classic Hour
 KJR—International Musical
 KSL—2:15, Dental Clinic
 KOA—Huffman Theatre Reporter

2:30 to 3:00 P. M.

*KPO & network—Something Simple
 KGO—Our American Schools
 KYA—Modern Notes
 KTAB—Child Life; Records
 KLX—Melody Race; Records
 KROW—Dance Matinee
 KJBS—Events of Interest; music
 KQW—Dance Matinee
 KGDM—The Romancier
 *KFRC & network—Tito Guizar;
 2:45, Miniatures, by Franklin Mc-Cormick
 KNX—To be announced
 KJR—Memory Box
 KECA—Travelogue
 KOA—Our American Schools

3:00 to 3:30 P. M.

KPO—Beaux Arts Trio
 *KGO & network—Tom Coakley's
 Orchestra
 KYA—Symphony Highlights
 KTAB—Notices; Chinese Music
 KLX—Recordings
 KROW—Fay Lanphar; Music; Talk
 KOW—Popular Vocal and Variety
 KJBS—News; Light Opera
 KGDM—Jubilee, Capt. Dobbs
 *KFRC & network—Al Roth and
 Orchestra
 KJR—Enchanted Islands
 KNX—To be announced
 KECA—Records
 KSL—3:15, Junior Hour
 KOA—Rowdy Wright; News

3:30 to 4:00 P. M.

KPO—Dot Kay, contralto; 3:45,
 Pastels
 *KGO & network—Tid-Bit; 3:35,
 Shortest Day Program; 3:40,
 Twenty Fingers of Harmony;
 3:45, The Master Builder
 KYA—Drama; Dance Parade
 KTAB—Sophistication; 3:45, Talk
 KLX—Records
 KROW—Singing Strings; Records
 KJBS—Dance Orchestra
 KQW—Variety Program
 KGDM—Jubilee
 *KFRC & network—Leon Navarra
 and Orch.; 3:45, Woody Willie
 KFRC—3:55, New York Stocks
 KJR—Vindabonians
 KNX—To be announced
 KECA—Recordings
 KSL—The Junior Hour to 3:45
 KOA—News; Orchestra

4:00 to 4:30 P. M.

*KPO & network—Pastels; Clef
 Dwellers
 KGO—Religion in the News; 4:15,
 Jamboree, variety program
 KYA—Tea Dance
 KTAB—Date Book; Bay Meadows
 KLX—Records; Bro. Bob's Club
 KROW—Waltzes; Campus Echoes
 KJBS—Dance Orchestra
 KGDM—Gilmore Oil Program
 KQW—Star Reporter; Variety
 *KFRC & network—Edgewater
 Beach Concert Orchestra
 KJR—Tea Dansant
 KNX—To be announced
 KECA—Recordings
 KSL—Broadcasters Review
 KOA—Religion in the News; Satur-
 day Jamboree

4:30 to 5:00 P. M.

*KPO & network—String Time
 KGO—Jamboree; 4:45, Pickens Sis-
 ters, vocal trio
 KYA—Tea Dance Parade
 KTAB—Peaceways; Ramblings
 KLX—Bob's Club; Records

KROW—Lee Davis Cowboys
 KJBS—Dance Orchestra to 4:45
 KQW—Story Time; Songs
 KGDM—Dance Orchestra
 *KFRC & network—Vera Van; 4:45,
 Lawyer and the Public
 KOIN—Hollywood Reporter
 KJR—Snapshots
 KFI—4:45, Charlie Wellman and
 Helen Hill
 KECA—Recordings
 KNX—Fireside Phantasies
 KSL—Broadcasters Review
 KOA—Jamboree; Ford Rangers

5:00 to 5:30 P. M.

*KPO & network—Swift Hour; mu-
 sic direction Sigmund Romberg
 KGO—Spiritual Fantasy
 KYA—Children's Program; 5:15,
 Metropolitans
 KTAB—Relief Talk; 5:15, Santa
 Claus
 KLX—Vocalist and Pianist
 KROW—Memory Lane, vocalist
 KGGC—Serenade; 5:15, Go to Church
 KQW—Concert
 *KFRC & network—Roxy Revue
 KEX—Concert; Sam Gordon
 KJR—Over the Skyways; Waltzes &
 Tangos
 KNX—Carefree Capers; 5:15, Church
 KECA—Recordings
 KFOX—Recordings

5:30 to 6:00 P. M.

*KPO & network—Swift Hour
 KGO—Beaux Arts Trio
 KYA—Metropolitans; Campbell
 KTAB—The Funnies; Voice of
 Stamps
 KLX—Covered Wagon Jubilee
 KROW—Eating Your Way to Health
 KGGC—Recordings; Irish Gems
 KQW—Musical Impressions
 *KFRC & network—Roxy Revue;
 5:45, Mary Courtland and Robt.
 Armbruster's Revue
 KJR—Candlelight Time
 KNX—Dr. Matthews; Music
 KFVB—Gold Star Rangers
 KECA—Recordings
 KFOX—News; Song Hits; Talk
 KFSD—5:45, Morales Islanders

6:00 to 6:30 P. M.

*KPO & network—Radio City Party;
 John B. Kennedy, master of cere-
 monies; guest artists; Frank
 Black's Orchestra
 KGO—Beaux Arts Trio; Edna Fisch-
 er, pianist
 KYA—Man About Town; Orchestra
 KTAB—Echoes of Portugal
 KLX—Arion Trio
 KROW—East Bay Labor Journal;
 6:15, Club Castro Villa
 KGGC—Dinner Dance Review
 KQW—Concert
 *KFRC & network—Chesterfield
 Program
 KJR—News Reporter; Concert
 KNX—News; 6:15, Concert Group
 KFVB—News; Records; Organ
 KECA—Records; News
 KFOX—News; Vocalists, Al & Molly
 KFSD—6:15, Fairway Facts

6:30 to 7:00 P. M.

*KPO & network—Gibson Family,
 original musical comedy
 KGO—Coquettes; Education Today
 KYA—Orchestra
 KTAB—Sports; News
 KLX—Arion Trio
 KROW—Rhythm Kings; Dr. Fauci
 KGGC—Theatre Program; Music
 KQW—Gerald Kenney; Thorobred
 Quarter Hour
 *KFRC & network—Benj. Franklin
 KOIN—Marine Corps Program
 KJR—Concert; Melody Palette
 KNX—Dance; 6:45, Jimmy Allen
 KFVB—Organ; Amer. Weekly

KECA—Wesley Tourtellotte, organ.
KFOX—School Kids; Elec. Transc.
KFSD—Los Flores Mountaineers

7:00 to 7:30 P. M.

•KPO & network—Gibson Family
KGO—Organ Symphony
KYA—Ernie Smith's Sport Page;
7:15, Wandering Troubadour
KTAB—Italian News; Sport of
Kings
KLX—News Items; 7:15, Vocalist
KROW—C. W. Hammond; News
KGGC—Orchestra; Organalities
KQW—News; Accordion Capers
*KFRC & netwk—Carborundum
Band
KJR—Los Argentinos
KFWB—Interview; Kaley & Fiske
KECA—Raine Bennett, poet
KNX—Watanabe and Archie; 7:15,
Calmon Luboviski, violinist
KFOX—Vagabonds; Bobby & Betty
KFSD—Feature Program

7:30 to 8:00 P. M.

•KPO & netwk—Ladies Laugh Last
KGO—Hal Kemp's Orchestra
KTAB—Spanish Home Hour
KYA—Drama
KLX—Carefree Capers
KROW—Hawaiians; Old Fashioned
Girl
KGGC—Recordings
KQW—Italian Radio Theatre
*KFRC & netwk—Saturday Revue
KOIN—Jimmy Allen; 7:45, Merry
Gentlemen
KOL—Radio Speaker Stevenson
KVI—Dr. R. M. Mellor to 7:45
KGW—Studio; Crazy Crystals
KOMO—30 Minutes of Music
KHQ—Crazy Wells; Ed. McConnell
KNX—Calmon Luboviski, violinist.
KFWB—Juvenile Revue
KFOX—Juvenile Revue
KGB—Comedy Stars to 7:45
KSL—7:45, Saturday Revue
KOA—Harry Sosnick's Orchestra

8:00 to 8:30 P. M.

•KPO & network—National Barn
Dance
KGO—Emil Polak's Orchestra
KYA—Winsome Serenader; Orchestra
KTAB—Ralph Baker, tenor; Golden
Gate Junior College
KLX—Musical Soiree
KROW—Latin-American Program
KQW—Voice of Portugal; Enter-
tainers
KGGC—Spanish-American Program
*KFRC & network—Richard Him-
ber's Champions
KJR—Uncle Sam's Exchange; Magic
Harmony
KFWB—Round Towner
KNX—Hollywood Barn Dance
KECA—Dept. of Playground
KFOX—Organ and Piano; Vocal
KFSD—Studio; 8:15, Drama Hour

8:30 to 9:00 P. M.

•KPO & network—National Barn
Dance
KGO—Freddie Bergin's Orchestra
KYA—Orchestra
KTAB—Golden Gate Junior College;
8:45, Vocalist
KLX—Musical Soiree
KROW—Latin-American Program
KGGC—Concert; Records
KQW—Music of the Masters
*KFRC & network—Hodge Podge
Lodge
KOIN—Footlight Fancies
KJR—"It's a case of Books"
KNX—Hollywood Barn Dance
KFWB—Sons of Pioneers
KECA—Recordings
KFSD—Drama Hour
KFOX—Orchestra; Cecil and Sally
KSL—Geppert Saturday Party;
8:45, Morton Salt Program

9:00 to 9:30 P. M.

•KPO & network—Big Ten
KGO—Freddie Bergin's Orchestra;
Musical Treasure Chest
KYA—Lyric Quartet; Novelty Piano
KTAB—Nevada Nightherders
KLX—Fauelt Theater of the Air
KROW—Italian Program
KGGC—News; Wyoming Cowboys
KQW—Music of the Masters
*KFRC & netwk—Joe Haymes Orch.
KHQ—To be announced
KOL—Dance Music
KVI—Orchestra
KJR—News Reporter to 9:15
KOMO—Fisher's Blend Half Hour
KNX—News; Hollywood Barn Dance
KFWB—Dance Orchestra
KFOX—Nick Stuart's Orchestra
KECA—Recordings to 9:15

9:30 to 10:00 P. M.

•KPO & netwk—Let's Dance: Or-
chestras under direction of Kel
Murray, Xavier Cugat & Benny
Goodman
KGO—Musical Treasure Chest
KYA—Dance Orchestra
KTAB—News; Drama
KLX—News; Orchestra
KROW—Dancing Party
KJBS—Morning Concert
KGGC—Records
KQW—St. Claire Hotel Orchestra
*KFRC & network—Dance Orch.
KOL—9:45, News; Editorial
KVI—Ledger News Flashes to 9:45
KNX—Hollywood Barn Dance
KJR—World Revue
KFWB—Slumbertime
KFOX—Slumbertime
KSL—Harry Clarke & Peter Spray-
nozzle to 9:45

10:00 to 10:30 P. M.

•KPO & network—Let's Dance
KGO—Williams-Walsh Orchestra
KYA—Bath-Day Party
KTAB—Club Tivoli Orchestra
KLX—Records
KGGC—Ten o'Clock Review
KROW—Dancing Party; Talk
KFRC—News; 10:10, Studio; Fred
Skinner, songs
KOL—Harrison Mason; Dance Music
KJR—Music Shop
KHJ—News Items; 10:10, Orchestra
KNX—Haven of Rest
KFWB—News; Organ
KFOX—News; Organ
KGB—News Flashes; Music
KECA—Recording
KSL—Dance Orchestras

10:30 to 11:00 P. M.

•KPO & network—Let's Dance
KGO—Press-Radio News; 10:35,
Marshall's Mavericks
KYA—Bath-Day Party
KTAB—Ray Teller Orchestra
KLX—Records
KROW—Quite Harmonies
KGGC—Ten o'Clock Review
*KFRC & network—Orville Knapp's
Orchestra
KOL—Dance Orchestra
KOIN—Elmer Jean Anthony's Col-
umbians; Kaballeros
KJR—Rocky Mountaineers
KNX—Pontrelli's Orchestra
KFWB—Orchestra
KFOX—Dance Orchestra

11:00 to 11:30 P. M.

•KPO & network—Let's Dance
KGO—Slumber Hour
KYA—Sandman Organ
KTAB—Dance Orchestra
KROW—Dance of the Hour
*KFRC & network—To be announced
KOIN—Anthony's Columbians
KJR—Dance Orchestra
KGW—Dance Orchestra
KFWB—Dance Orchestra

KFOX—Dance Orchestra
KGB—Orchestra

11:30 to 12:00 Midnight

•KPO & network—Let's Dance
KGO—Slumber Hour
KYA—Organ
KTAB—Dansapations
KROW—Ran Wilde's Orch.
*KFRC & network—Dick Jurgen's
Orchestra
KJR—Till Tomorrow
KFWB—Dance Orchestra
KHJ—Recordings
KFOX—Freddie Carter's Orchestra

12:00 to Sign Off

•KPO & network—Let's Dance;
News
KTAB—D-X Program
KROW—Dance Music
KJBS—Records
KHJ—Records
KFWB—Clyde Leach's Orchestra
KGB—Recordings
KJBS—12:01, Owl Program to 7 a.m.

Program listings are correct when published by Broadcast Weekly, but sale of time by stations and networks and national emergencies often cause deviations which the stations cannot foresee.

Christmas Suggestion

... and it's not too early to start thinking about your Christmas gifts. A one-year subscription to *Broadcast Weekly* will make an ideal Christmas gift to any friend or family. A constantly recurring joy, for each issue is different during the fifty-two weeks of the year. Here is something that makes an ideal little remembrance, that carries the spirit of the season, and is useful as well. You may also include your own subscription on this offer.

Subscribe at These Prices

One one-year subscription \$1.50
Three or more one-year subscriptions 1.00 each

BROADCAST WEEKLY,
1114 Mission Street, San Francisco, Calif.

Gentlemen:

I enclose herewith \$..... for.....one-year subscriptions to *Broadcast Weekly*. Kindly start all subscriptions with the Christmas issue, unless otherwise marked, and mail Christmas card to each party advising them of this gift from me.

My name is..... Address.....

City..... State.....

Name..... Address.....

City..... State.....

Name..... Address.....

City..... State.....

Name..... Address.....

City..... State.....

SPECIAL OFFER—25 cents additional with each subscription to *Broadcast Weekly* will bring you a Character Analysis of your handwriting or that of a relative or friend by Zita Lomas, handwriting expert. Read her analysis on page 10 of *Claude Sweeten*.

This file including all text and images are from scans of a private personal collection and have been scanned for archival and research purposes. This file may be freely distributed, but not sold on ebay or on any commercial sites, catalogs, booths or kiosks, either as reprints or by electronic methods. This file may be downloaded without charge from the Radio Researchers Group website at <http://www.otrr.org/>

Please help in the preservation of old time radio by supporting legitimate organizations who strive to preserve and restore the programs and related information.