

SOME FUN, BY GUM!

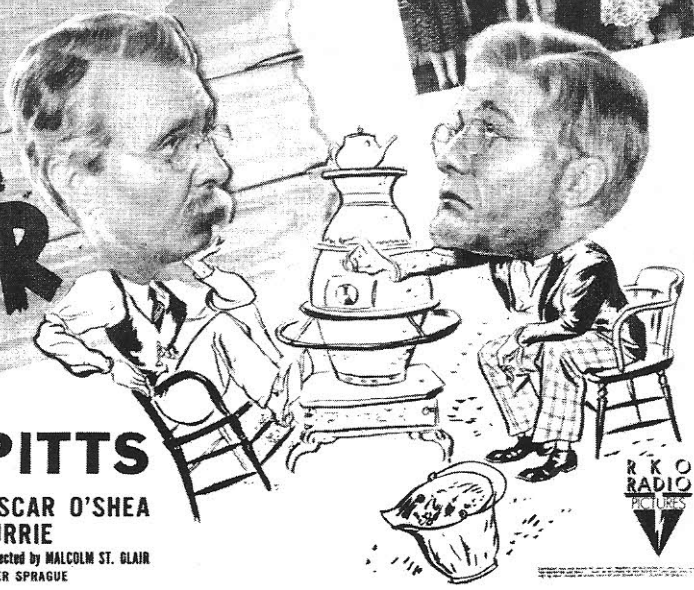
The hot-stove league is again in session!...with those armchair arbiters of world affairs...those radio favorites of millions...proprietors of Pine Ridge's leading emporium for facts, fun and philosophy



LUM & ABNER
 IN THE
BASHFUL BACHELOR



WITH
ZASU PITTS
 and
 GRADY SUTTON · OSCAR O'SHEA
 LOUISE CURRIE
 Produced by JACK WILLIAM VOTIEN · Directed by MALCOLM ST. GLAIR
 Screen Play by CHANDLER SPRAGUE



APRIL 2002

VISIT

The Jot 'Em Down Store &
Lum & Abner® Museum



Located on Highway 88
(the "Lum & Abner Highway")

PINE RIDGE, ARKANSAS

For further information, contact
LON & KATHY STUCKER
P.O. BOX 38
PINE RIDGE, AR 71966
(870) 326-4442



THE SEVEN
Lum and Abner®
MOVIES

are available on video!

*Dreaming Out Loud • The Bashful Bachelor
Two Weeks to Live • So This Is Washington
Goin' To Town • Partners In Time
Lum & Abner Abroad*

\$29.95 each

Order from
Lum & Abner Associates
135 Circle Drive
Hot Springs, AR 71901

<http://www.lumandabner1.homestead.com/homepage.html>

April 2002 - Page 2

SUSPORT YER LOCAL NLAS

Now is the time to check up on your NLAS merchandise and see if you have missed anything! The Society can always use the business (just like the Jot 'Em Down Store), but never more so than at this time of year.

Unfortunately, the increases in postage and other materials used in production have forced us to raise the prices slightly on some of our items. Here is the current list with its updated amounts:



LUM & ABNER SCRIPT REPRINT BOOKS

\$7.00 each

APRIL 1937: *SOMEONE'S IN THE KITCHEN WITH LUM*

(only a few copies remain)

MAY 1937: *ONE SPUD TO GO*

JUNE 1937: *COURTIN' DISASTER*

NLAS CONVENTION VIDEOS

\$15.00 each

Years from 1985 through 1996 available; more volumes coming soon!

NLAS "SPECIAL RELEASE" CASSETTES

\$5.00 each

These contain rare material generally not found in the "regular" NLAS Tape Catalog:

THANKSGIVING IN PINE RIDGE - A special 1-hour broadcast from 1953

THE ALKA-SELTZER SPECIALS - Assorted special productions from the 1941-48 period

BEHIND THE SCENES WITH LUM & ABNER - Rehearsals, auditions, and what not

LUM & ABNER'S JUKEBOX JAMBOREE - An unsold 1951 audition for a new L&A format

TOTALLY HIDDEN LUM & ABNER - More unusual and scarce recordings, including the 1936 ceremony that changed Waters, Ark. into Pine Ridge

THE MUSIC OF LUM & ABNER - Musical highlights from the world of Pine Ridge

BACK ISSUES OF THE JOT 'EM DOWN JOURNAL

\$2.00 each

ALL 106 ISSUES TO DATE AVAILABLE... AUGUST 1984 through FEBRUARY 2002

NLAS TAPE LIBRARY CATALOG

\$3.00 - Fill in the gaps in your collection!

The Jot 'Em Down Journal,
 Volume 18, Number 5 (Whole
 Number 107), April 2002.
 Published bi-monthly by the
 National Lum and Abner
 Society. Membership, includ-
 ing a subscription to the
Journal, is \$15.00 per year.
 Send editorial and subscrip-
 tion correspondence to the
 Executive Secretary, Tim
 Hollis, #81 Sharon
 Boulevard, Dora, AL 35062,
 e-mail CampHoll@aol.com.

**THE NATIONAL
 LUM AND ABNER
 SOCIETY**

Zekatif Ossifers
PRESIDENT

Donnie Pitchford
VICE-PRESIDENT

Sam Brown

EXECUTIVE SECRETARY

Tim Hollis

*Front Cover: An impressive
 spread to advertise the showing of
 THE BASHFUL BACHELOR at
 the Mansfield Theater in
 Mansfield, Missouri, 1942.*

LUM AND ABNER is a reg-
 istered trademark. Used by
 permission of Chester Lauck,
 Jr.

THE JOT 'EM DOWN JOURNAL

APRIL 2002

In This Issue:

Who Are All Those *Bashful* People? 4

Biographies of the stellar *Bashful Bachelor* cast

Se Habla Huh? 7

Did you ever wonder how L&A would translate into Spanish? No?

Lum & Abner in the News 8

A 1942 article that was part of the *Bashful Bachelor* pub-
 licity

When WHO Cut Down WHAT? 11

A story about L&A's favorite song

In Memory of

Nancy Baker

We received the following sad news from our friend Forrest Owen, 1996 Convention guest and Lum & Abner producer from 1946-48:

At Christmas we received a card from Karen Baker, daughter of Gene and Nancy. She told us that Nancy had died last July and found our name and address in her files. I assumed she would have notified you for the Jot 'Em Down Journal, but did not find a notice in the last edition, so now I assume that you did not know. Apparently Nancy died suddenly from a heart attack and Karen said she had not suffered. Of course, we knew from our last conversation with her several years ago that she was very feeble, unable to leave the house, and rather low in spirit as would be understandable. We had intended to go see her in L.A. but never made it. Holy cow! So it was sad to hear she was gone.

You will recall that Nancy Baker was the widow of 1944-48 L&A announcer Gene Baker, and she had provided us with several priceless artifacts over the years. One of them is seen here, as Chet & Tuffy clown around with Gene & Nancy. We will miss her.



Who ARE All Those BASHFUL People?!

Back when we celebrated the 60th anniversary of *Dreaming Out Loud* in 2000, many people complimented us on our feature giving biographical run-downs on the actors who appeared in that film. We thought we would do the same for the performers in *The Bashful Bachelor*, even though it had a considerably smaller cast. With the help of the not-always-100%-reliable Internet Movie Database (www.imdb.com) and our own archival holdings, we can bring you the following data.

ZASU PITTS (Miss Geraldine)

It seems somewhat odd that ZaSu Pitts, known for her woebegone and melancholy appearance, would have been cast as Lum's romantic interest in *The Bashful Bachelor*, as in the radio show Mr. Edwards generally mooned over much more attractive ladies. However, Miss Pitts could have defeated all of those young whippersnappers just



by pulling out her credits. Born in Kansas in 1898, Miss Pitts made her debut on the silent screen in 1919. Several movie historians have documented that during the era of silent movies, Miss Pitts was known primarily as a dramatic actress. That somehow changed when sound came in, and her whiny voice and comic mannerisms became her trademarks from that point on. *The Bashful Bachelor* came toward the end of her most active period in the movies, as she concentrated on television and other appearances from the late 1940s on. (Let us not forget that she was reunited

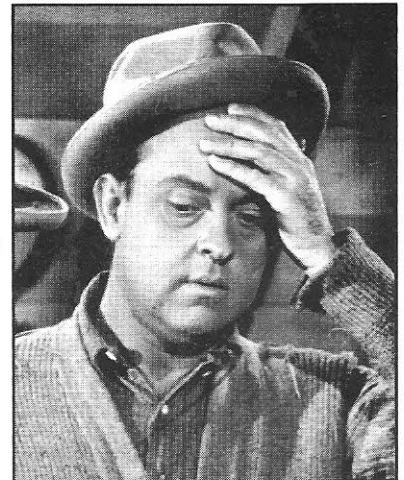
April 2002 - Page 4

with L&A for their half-hour radio shows in 1949-50, making her the only L&A movie performer to move into a continuing role on the radio series.) Miss Pitts passed away in June 1963; her final screen appearance was seen during that same year, as a telephone operator in the comedian-glutted *It's A Mad, Mad, Mad, Mad World*.

GRADY SUTTON (Cedric Weehunt)

Whereas the first L&A movie had featured none of the radio characters

other than L&A themselves, that changed with the release of *The Bashful Bachelor*. In the publicity, much was made of Cedric Weehunt's screen debut, but when moviegoers saw that Grady Sutton had been cast in the role, they may have been somewhat disappointed.



Sutton was a fine actor, with some 187 movies to his credit, but somehow his age (he was 34 at the time *Bashful Bachelor* was released) and his attempt to impersonate Chet Lauck's radio voice for Cedric made the formerly naive Mr. Weehunt come across more like Forrest Gump. Needless to say, his L&A movies were not among his most favorite memories of show business. Sutton was far more noted for his many appearances alongside W. C. Fields and Laurel & Hardy, but even fans of those classic comedians were met by a stone wall when trying to get any memories out of him. After his final movie appearance (as a school board president in 1979's *Rock 'n' Roll High School*) he became something of a recluse, and

adamantly refused to discuss his movie career with anyone. He had been living in the Motion Picture Country Home in Hollywood for about a year when he passed away in September 1995.

OSCAR O'SHEA (Squire Skimp)



The second of the two major radio characters to make a movie debut in *Bashful Bachelor*, Squire Skimp translated to the screen a bit better than did Cedric. This was due in no small part to the casting of 61-year-old Oscar O'Shea as Pine Ridge's favorite shyster. Physically perfect as Squire, the most noticeable break from radio tradition was

O'Shea's thick Irish brogue. (Oddly, he was not born in Ireland, but in Peterboro, Canada.) Although he undoubtedly had had many years of show business experience previously, O'Shea's American movie career did not begin until 1937. The bulk of his work came in the late 1930s and early 1940s, with his two L&A films (he also played Squire in a brief scene in *Two Weeks To Live*) being just another in his string of appearances. His final film was *Thy Neighbor's Wife* (1950), and he passed away on April 6, 1960.

LOUISE CURRIE (Marjorie)

Miss Currie is the only surviving cast member from *The Bashful Bachelor*, although for some time the Internet Movie Database had her reported as deceased. Thanks to the squeaky wheels of the NLAS and others, that error has at last been corrected. Breaking into movies in 1940, Louise's first roles fell firmly into the B category, at studios such as Republic and Monogram. It was quite an honor when she was cast as a reporter (even though her face was in shadow and only her voice was heard) in Orson Welles' magnum opus *Citizen Kane* (1941). She balanced such heavy-duty work with lighter fare, such as the Republic serials *Adventures of Captain Marvel* (1941)



and *The Masked Marvel* (no relation, 1943). In *The Bashful Bachelor*, she was seen as Squire Skimp's beautiful niece Marjorie (whether her last name was Skimp was not specified). She continued to work throughout the rest of the decade, but by the

early 1950s was retired from acting. Instead, she went into the interior decorating business, which still keeps her busily occupied today. In 1992 she took time from her hectic schedule to attend the NLAS Convention and celebrate the 50th anniversary of *Bashful Bachelor*; she is hoping to be able to return this year for the 60th anniversary, but only time will tell whether she is able to work that in. Hope to see you in June, Louise!

CONSTANCE PURDY (Widder Abernathy)

This portly actress's career is not very well documented, but it seems

that she had appeared in only three films (one in 1934 and two in 1936) before landing the role of scheming Widder Abernathy in *The Bashful Bachelor*. It may or may not be that her work with L&A revitalized the demand for her, but after that movie she worked



steadily in a succession of character roles for the next eight years. Unfortunately, Ms. Purdy is not one of the lucky actors who transcended their typecasting. Her roles between 1942 and 1950 have her listed as "Fat Shopper In Market," "Fat Woman," "Old Hag," "A Gossip," "Fat Night Nurse," and other not-exactly-complimentary parts. She passed away at the age of 72 on April 1, 1960, ironically just five days before

the passing of her fellow *Bashful Bachelor* performer Oscar "Squire Skimp" O'Shea.

IRVING BACON (Sheriff)

We discussed the amazing career of Irving Bacon in our tribute to *Dreaming Out Loud* two years ago, and will be hearing from him again next year when the *Two Weeks To Live* anniversary comes around. Yes, Bacon has the distinction of being the only supporting actor to appear in three L&A movies in a row, playing totally different

parts in each. In *Dreaming*, he had the dramatic role of reformed town drunk-turned-deputy Wes Stillman; in *Bachelor*, his role was much smaller and less well-defined, as the sheriff in Mena who detains Abner (thanks to some chicanery by Squire Skimp). In *Two Weeks*, he would be seen as the zonked-out would-be poet Gimple, a much zanier role for him. Irving Bacon was nothing if not versatile, and the 391 movies he made prior to his death in February 1965 are a continuing living proof of his acting ability.

EARLE HODGINS (Joe Abernathy)

This busy character actor ended up with well over 200 movies made between 1934 and 1962 on his resumé, yet his appearance in *Bashful Bachelor* may have been the least notable of any of them. His only purpose was to show up near the end of the story as Widder Abernathy's long-lost husband, thus preventing her marriage to panic-strick-



en Lum. (This was a direct adaptation of a May 1936 L&A radio storyline.) Outside the borders of Pine Ridge, Hodgins is said to have been known as the stereotypical carnival barker who coined the now-famous phrase "Go away, kid, ya bother me." When he wasn't barking, he could usually be found in a Western setting, his other largest genre. His credits show 49 different appearances during the heyday of the TV Western, and he might have continued indefinitely had he not died of a heart attack in April 1964, at the age of 70.

BENNY RUBIN (The Pitch Man)

Benny Rubin is one of those ubiquitous character actors who seems to have worked in nearly everything over the course of his career (our NLAS friends Jerry Hausner and Parley Baer fall into the same category). In *The Bashful Bachelor*, Rubin had only one scene, and that was when he sold Abner (and, offscreen, Lum) a pair of defective eyeglasses. It is doubtful that he even remembered this brief work among his 88 other film roles between 1928 and 1978, not to mention his work in television and radio (he was one of the semi-regulars on *The Jack Benny Show*). Rubin passed away at the age of 87 in July 1986.



SPECIAL NOTICE

Just before this issue went to press, we were informed that Elizabeth Goff, widow of Norris (Abner) Goff, passed away on February 25, 2002. We will be devoting the June issue of the *Journal* to an overview of her life. Our sincere condolences go out to her family.

Se Habla HUH?

Back in January 2001, the NLAS received a most unusual e-mail request. It seems that a TV station in Spain had obtained a copy of *THE BASHFUL BACHELOR* to broadcast, and they were in the process of creating the Spanish subtitles for the movie. Not surprisingly, there was some of the dialect that they were unable to interpret well enough to translate it into Spanish. We provided as much information as we could, and we assume the film was shown satisfactorily. (What people in Spain thought of this depiction of life in the Arkansas hill country is not documented.) At any rate, once the Spanish script was complete, the TV station very thoughtfully e-mailed us a copy of their final translation. Those of you members who happen to be bilingual might want to take this excerpt and read it as you watch the movie, just to see how faithfully it bridged the language gap! (In the parts of the script that do not appear here, apparently Lum's "I grannies" translated as "Yo diría.")

LUM: Oh, buenos días Marjorie. Buenos días Abner.

ABNER: Buenos días, Lum.

LUM: Abner, hay algo que quería comentarte.

ABNER: Sí, claro. No pasará nada, ¿verdad?.

LUM: No, pero, ¿alguna vez te has parado a pensar que nunca pasa nada aquí en Pine Ridge? Quiero decir, nada emocionante. Por ejemplo, llevamos no sé cuantos años con esta tienda y nunca hemos tenido ni un sólo robo. Eso no pasa en ninguna parte.

ABNER: ¿Nunca hemos tenido un robo? ¿Qué me dices del día en que cogí al pequeño Gomer Basesaliendo de aquí con los bolsillos repletos de caramelos? Menos mal que estuve atento.

LUM: Bueno, no creo que fuera una heroicidad el coger al pequeño Gomer Base.

(Apparently the translator had trouble with the name "Gomer Bates.")

ABNER: Sí, ya. Pero, ¿quién quiere ser un héroe?.

LUM: Verás, eso era de lo que quería hablarte. Anoche la señorita Geraldine me estuvo....

ABNER: Oh.

LUM: Escucha, si vas a hablar tú, adelante habla.

ABNER: Sólo he dicho "oh."

LUM: ¿Qué quieres decir con "oh"?

ABNER: Bueno, es lo único que se me ocurrió.

LUM: Siempre dices eso. ¿Cómo vas a ayudarme a ser un héroe si sólo sabes decir "oh"?

ABNER: Entiendo, si quieres que te ayude a convertirte en un héroe, pero ¿para que demonios quieres ser uno?.

LUM: Verás, estaba leyendo un libro, la señorita Geraldine, que hablaba de caballeros y damiselas y todas esas cosas, y pensé que si yo pudiera ser un héroe como esos, tal vez, tal vez lograra que se casara conmigo. ¿Te parece un tontería?.

ABNER: (R) Perdona, no he podido evitarlo Lum. Así que después de todos estos años, estás por fin dispuesto a pedírselo, ¿eh?.

LUM: Es una mujer realmente encantadora, Abner. Una mujer realmente encantadora.

ABNER: Oh sí, es una gran mujer, desde luego. No es que sea precisamente mi tipo ni nada de eso y no seré yo quien juzgue su aspecto físico, pero es una gran mujer.



LUM: Había pensado que tiene que haber algún modo en que puedas ayudarme a convertirme en héroe, en lugar de perder el tiempo haciendo casitas para estos malditos conejos y ese perro inútil donde quiera que esté. ¿Qué está destrozando ahora?.

ABNER: Lum, sé que nunca te gustó así que me he desecho de él. Esta mañana lo vendí.

LUM: Vaya, cuanto me alegro. ¿Cuánto te dieron por él?.

ABNER: Cien dólares.

LUM: ¿Cien dólares por ese montón de pulgas?.

ABNER: Sí señor.

LUM: ¿Dónde está el dinero?.

ABNER: Verás, lo dejé en el cobertizo.

LUM: ¿En el cobertizo? Menudo sitio para dejar cien dólares americanos. Venga, vamos a por ellos.

ABNER: Eh, no, espera un momento.

LUM: La única venta buena que haces en diez años y has tenido que dejar el dinero allá en el cobertizo. Estupendo. Espera un momento, ¿qué hacen aquí estos perros?.

ABNER: (G)

LUM: ¿De dónde han salido?

ABNER: Son los cien dólares, Lum. La mamá perrita por cincuenta dólares y cinco cachorros de diez dólares. (R)

LUM: Eres imposible. Debí haber imaginado que volverías a hacer una tontería. Te deshaces de un perro y ahora tienes seis. ¿Qué ha sido eso?.

Lum & Abner® In The News

REPRINTS OF PAST LUM & ABNER ARTICLES

The article below appeared in the July 1942 issue of *HOLLYWOOD* magazine, and ties in well with our celebration of the 60th anniversary of *The Bashful Bachelor*. The writer did a reasonably accurate job, but notice in the opening paragraphs that she apparently got Lum's and Abner's voices reversed. Also, watch for the reference to "Grandpa" Spears!

"TWO OTHER GUYS"

by CONNIE CURTIS

A pair of elderly characters were on the theater stage broadcasting. One was tall and stooped, the other was of medium height and stooped. The tall one owned a white handlebar mustache and a high, contentious voice, while the shorter member sported a pair of lower-nose glasses, a growth of chin whiskers, and a super-deep voice. Each wore the rusty vest, creaseless trousers, string tie and antique-collared shirt, proper for a proprietor of the Jot 'Em Down Store in Pine Ridge.

A woman in sixth row center murmured, "I just knew Lum and Abner would look like that. Aren't they a perfect sample of crossroads bumpkins?" At this moment the skit ended, and Lum and Abner exited to the accompaniment of vociferous applause. In the wings, thirty seconds worth of metamorphosis took place. The rustic clothes, deceptively one-piece like a coverall, were unbuttoned and shed, the white make-up and phony whiskers were removed in large hunks, and two streamlined, dapper young men fully clothed in

slacks, shirts, four-in-hands and sports shoes, thrust themselves into sports coats and returned to the stage. All the people said, "Ah." And added, "Why, they're young!"

Lum and Abner are actually two other guys! Chester Lauck and Norris Goff, better known around NBC and the R-K-O Studios, where they recently finished making a very funny picture titled *The Bashful Bachelor*, as Chet and Tuffy. Chet is the tall, dark one and has frequently been mistaken for Clark Gable. Tuffy is the medium-sized, brown-haired one with the deep cleft in his chin. Both have blue eyes, small mustaches, and a superlative sense of humor.

This Damon and Pythias pair first joined forces in Mena, Arkansas, in 1912,

when they were still members of the cat's-eye agate and mumblety-peg set. They were buddies through grade school, high school, and finally entered the University of Arkansas together, where both were initiated by Sigma Chi. After a year, Chet went up to Chicago to study art, and Tuffy moved over to the



JOT IT DOWN!
THEY'RE BACK IN TOWN!
Facts, fun philosophy by the master-minds of Main Street.



LUM and ABNER
in **THE BASHFUL BACHELOR**
He's lulu over **ZASU PITTS**
with Grady Sutton • Oscar O'Shea • Louise Currie
Produced by JACK WILLIAM VOTION • Directed by MALCOLM ST. CLAIR • Screen play by Chandler Sprague

they unpacked their grips preparatory to dressing for the hop routine, they stared at the bed... where their outfits were laid out... then sat down and howled. Although they had been separated for many a year and neither had discussed his clothes with the other, they had brought identical suits from different haberdashers. Not only that, but their shirts were the same style and color, their ties matched exactly, and even their shoes were alike.

University of Oklahoma. During a simultaneous vacation spent in Mena, Chet telephoned his pal and suggested that they drive down to Texarkana to a dance. It was a 150-mile trip, so they decided to spend the weekend. That night, when

Some Fun By Gum!



LUM and ABNER
in **THE Bashful Bachelor**
with **ZASU PITTS**
Grady Sutton • Oscar O'Shea • Louise Currie

splurges, they found that one coat was a black and white herringbone tweed and the other was a black and white random tweed. Let this not give you the impression that Lum and Abner are identical twins who just happened to have been born into different families. Not at all. Each is a separate and distinct personality, but as a pair they happen to have coinciding tastes to an astonishing degree. Probably they get on so well because they are not carbon copies of one another, but supplemental editions.

They got into the Lum and Abner routine on a fluke. They were going to do a blackface act for a flood benefit over the Hot Springs station KTHS, but when they arrived they found the program consisted entirely of blackface comedians, so they hit upon the Ozark personalities at a moment's notice, ad-libbed the first show, and kept up the ad-libbing for months before they tied the eccentric storekeepers down to a script.

To this day they frequently abandon a script if one of them gets an hilarious notion in the middle of a broadcast. Lum and Abner are as real to Chet and Tuffy as they are to any radio listeners. Tuffy says, "You don't think about yourself pretending to be one of the characters, you think of yourself imitating something already done. You never think of yourself as creating monkey business; you think about recording a stunt actually pulled in the Jot 'Em Down Store."

To keep their dialogue typical and their accents unimpeded, the boys make frequent

Old Friends — NEW FUN!



The panic is on in Pine Ridge... bringing you longer and louder laughs than "Dreaming Out Loud"!

LUM and ABNER
in **THE BASHFUL BACHELOR**
with **ZASU PITTS**
GRADY SUTTON • OSCAR O'SHEA • LOUISE CURRIE
It's a HOWL!

To this day they find that, without consulting one another, they are likely to purchase the same general type of clothes. They went out one afternoon separately, and each happened to see a sport coat in the window that he liked. Both made a spur-of-the-moment purchase and returned to their office with a large cardboard box under one arm. That was funny enough, but when they opened the packages to compare

Lum's sure keen for Geraldine... they're the coyest pair you've ever seen... Looks like we'll be taking in a new partner at the Jot 'Em-Down store, folks!

IF IT'S LAUGHTER YOU'RE AFTER — Here's the Answer...



LUM and ABNER
in **THE Bashful Bachelor**
with **ZASU PITTS**
GRADY SUTTON • OSCAR O'SHEA • LOUISE CURRIE
Climaxing on the Screen 11 Years of Radio Fun-Making!
Produced by JACK WILLIAM VOTION • Directed by MALCOLM ST. CLAIR
Screen play by Chandler Sprague

LUM'S IN LOVE
—What a LAUGH!

You can hear the howls all the way from Pine Ridge, Arkansas, as radio's favorites fill the screen with FUN!

The hot-stove league's in session again!

LUM & ABNER
in **THE Bashful Bachelor**
with **ZASU PITTS**
Grady Sutton • Oscar O'Shea • Louise Currie

Produced by JACK WILLIAM YOTTON • Directed by MALCOLM ST. CLAIR • Screen play by Chandler Sprague

trips down to Arkansas. (Incidentally, both of them were made official Arkansas Travelers by the Governor on July 15, 1941.) When one of them is gone, the other carries the program. Chet does Lum, Grandpa Spears and Cedric. Tuffy does Abner and the Squire. Naturally, plot incidents have to be planned in advance to make the absence of one of the proprietors of the Jot 'Em Down seem natural.

In addition to absence, head colds are another hazard. Recently, Tuffy came down with sniffles and

discovered on the set at R-K-O that his Abner voice had vanished. Shooting had to be held up, but the radio program went on—with Lum carrying the burden of the story with his three healthy voices.

Now that the boys are no longer simply voices, but have materialized as bodies on the screen, there are other problems to be noted. For one thing, it requires the make-up department three hours to age the virile partners to the creased aspect of Lum and Abner.

The facial make-up is one thing, and proper wardrobe is another. But anyone who has seen the spring steel muscles and qui vive posture of Chet and Tuffy, is astonished at the sight of their stoop-shouldered,

shuffling, pot-tum-mied cinema images. How do they do it?

Chet says; grinning, "In spite of myself, my shoulders slump and I slide my heels when I speak with Lum's voice." Such metamorphosis is pure artistry, and speaks highly of the histrionic abilities of the pair.

Other abilities include expert horsemanship (each owns several horses) and golf scores in the low eighties.

Both live in San Fernando Valley. Both are married. "About the only difference between us," Tuffy says, "is that Chet has two girls and a boy in his family, whereas I have just a girl and a boy. Funny thing, though. Chet's boy looks exactly as my son did at his age." They agree that it would be nice if their sons would carry on the Lum and Abner tradition, so that in years to come, as now, the lackadaisical Ozarkians would be just two other guys.

Radio's Favorites
on the Screen!

—They keep getting funnier and funnier.

LUM and ABNER
IN THEIR SECOND LAUGH RIOT—

THE BASHFUL BACHELOR

with **ZASU PITTS**
Grady Sutton • Oscar O'Shea • Louise Currie

Produced by JACK WILLIAM YOTTON • Directed by MALCOLM ST. CLAIR • Screen play by Chandler Sprague

Mansfield Theatre

MANSFIELD, MISSOURI

Saturday September 5
Thrill to the drama of Uncle Sam's "jump fighters!" Lots of action and comedy!

'Parachute Battalion'
With Robert Preston, Nancy Kelly, Edmond O'Brien, Harry Carey, Buddy Ebsen
Also Cartoon and Chapter 12 "JUNGLE GIRL"
Matinee 10c-18c Night 10c-22c

Sunday-Monday September 6-7
Radio's general store keeps on the screen in a riot of fun and romance!
Lum and Abner in

"The Bashful Bachelor"
With Zasu Pitts
ALSO—NEWS AND COMEDY
Matinee Sunday 2:30; Nights 7:30-9:15 10c-22c

Thursday-Friday September 10-11
Thieves, romance and thrills packed into one evening of entertainment!

Henry Fonda, Gene Tierney in
"Rings on Her Fingers"
With Laird Cregar, Spring Byington
ALSO—NEWS AND COMEDY
10c-22c

Sunday-Monday September 13-14
Judy Canova in
"True to the Army"
With Allen Jones, Ann Miller

LUM AND ABNER

—Take you back to Pine Ridge and their famous Jot-'em-down store in their SECOND SCREEN SCREAM!

The Bashful Bachelor

When WHO Cut Down WHAT?

One of the unsolved mysteries of L&A history is just how they became so attached to the song *They Cut Down The Old Pine Tree*, which is known to have been written in 1929 by George Brown, Willie Raskin, and Edward Eliscu. We may now have a clue to at least a piece of that story.

Longtime Cleveland, Ohio, children's TV host Linn Sheldon (better known to kids of that city as "Barnaby the Leprechaun") tells the following story in his 1999 autobiography **BARNABY AND ME**:

One of the most talented people I have ever known was a man named Gene Carroll.

Long before television came on the scene— and for some years afterward— Gene and his partner, Glenn Rowell, were on local and network radio with a show called "Gene and Glenn." Gene is probably best remembered for two of the characters he created and also played on the show, "Jake and Lena."

He was also heavily involved in the earliest days of television, and was a tremendous help later on as I developed Barnaby.

At the time I was, in effect, the opening act for each day's broadcasting, telling the audience what was coming up, interviewing people, and doing songs, comedy bits, and anything else I could think of.

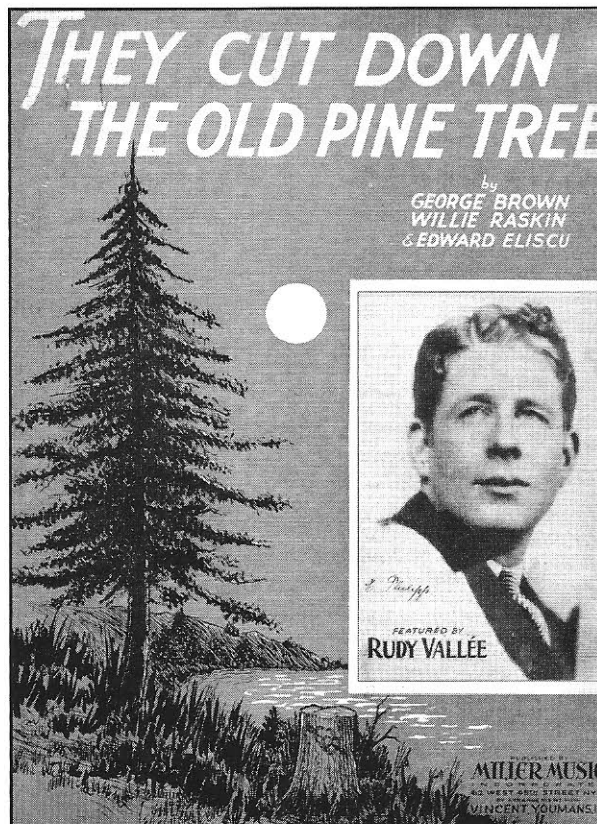
When I first met Gene, I asked him if he would come on my show that day, and he said he would. A little later his wife came up to me and said, "Be careful of that guy. He's a sweetheart, but sometimes he'll throw you a curve, just for the fun of it."

We got together to talk about the show, and Gene asked me what I'd like to do. I told him I'd love to sing a song that he and Glenn sang on their radio show, with Glenn singing

melody and Gene doing the harmony. "Fine," he said. "Which one should we do?" "How about 'When They Cut Down The Old Pine Tree?' He said okay, but we'd better rehearse it. We sat down at the piano. He played, and we worked out the harmonies for about a half hour, just before the show.

We went on the air, live of course. I did a number and then introduced Gene.

"Well, what should we do tonight?" he asked. "How about singing one of those great old songs you and Glenn used to sing on the radio?" He said okay, and we sat down at the piano. "Which one do you want to sing?" asked Gene. "When They Cut Down The Old Pine Tree," said I. "Gee," he said. "I don't remember that one. We never sang a song like that. Now here's one we did do..." and he started playing something I'd never heard before. I really got befuddled "C'mon, Gene," I pleaded, "We rehearsed that other one for some time..." Then he said, "Sure, I'm just joking," and moved right into "When They Cut Down The Old Pine Tree." As much as anything else, that brought home one of the most valuable lessons any entertainer can learn: never drop your guard.



Knowing that Gene & Glenn were good friends with Lauck & Goff (in fact, *Lum and Abner* had its network debut as a two-week replacement while Gene & Glenn were on summer vacation), it seems that this may be the most reliable evidence yet of how the Pine Ridge pair picked up on the tune. As more clues turn up, we'll pass them along to you!

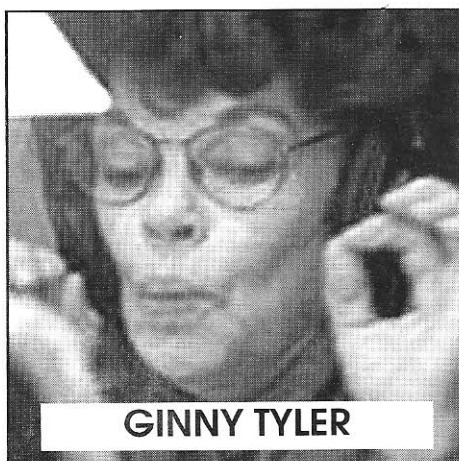
- Tim Hollis

MAKE READY TO HIT THE BRICKS! IT'S THE 18TH ANNUAL NLAS CONVENTION

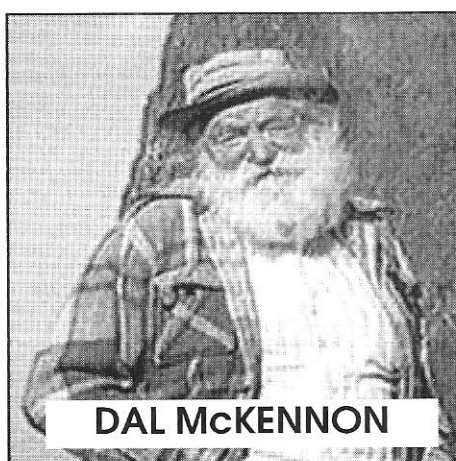
JUNE 14 & 15, 2002

Lime Tree Inn,
MENA, ARKANSAS

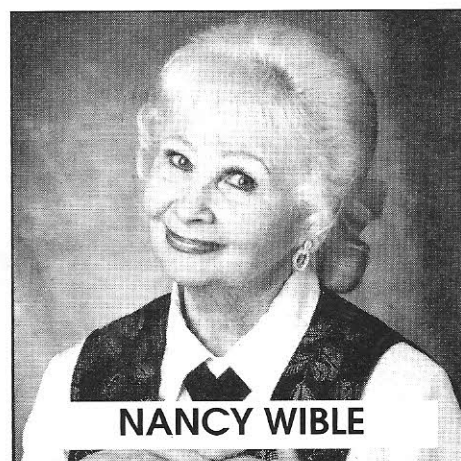
SPECIAL GUESTS:



GINNY TYLER



DAL MCKENNON



NANCY WIBLE

It's only about two months until the annual NLAS Convention, and those of you who have attended in the past know that there is nothing quite like it. Those who have NOT attended should seriously consider doing so this year!

There will be more details about the festivities in the June issue of the *Journal*, but we can tell you that the three guests pictured above have all had amazing careers in radio, animated cartoon voice work, and other aspects of show business. In our next issue we will be bringing you some "sneak previews" of the work each of them is known for, and whether you know it or not, you are certainly familiar with some of the things they have done! Have you ever seen Disney's *Lady & the Tramp*, *Mary Poppins*, *Bedknobs & Broomsticks*, or *The Sword in the Stone*? What about the TV cartoons *Gumby*, *The Archies*, or *Casper the Friendly Ghost*? What about the Woody Woodpecker cartoons? What about the 1967 *Dr. Dolittle* movie with Rex Harrison? What about *Fibber McGee & Molly* and *The Jack Benny Show*? What about Fess Parker's *Daniel Boone* TV series? See, we TOLD you they had done it all! In addition, we will be celebrating the 60th anniversary of L&A's 1942 motion picture *The Bashful Bachelor*, and a good time is shore to be had by all.

If you are planning to attend, you should call and make your room reservations as soon as possible. The number at the Lime Tree Inn is (501) 394-6350. Watch the next issue of *The Jot 'Em Down Journal* for more specifics, but meanwhile, just start planning to be with us!

PLUS THE 60TH
ANNIVERSARY OF

