

**LUM AND  
ABNER**

WITH A BRAND  
NEW LAUGH  
EVERY MINUTE  
OF THE TIME!

in  
**PARTNERS  
IN TIME**

with **PAMELA BLAKE · JOHN JAMES · TEALA LORING · DANNY DUNCAN**

a JACK W. VOTION Production · Produced by BEN HERSH · Directed by WILLIAM NIGH  
Original Screen Play by CHARLES ROBERTS

46/67

*February 1986*

February 29, 1936

J. R. Huddleston  
Waters, Arkansas

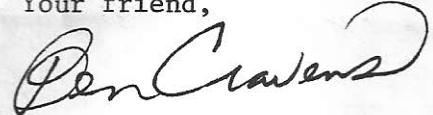
Dear Dick:

I trust that on and after April 26, I may be able to address you at Pine Ridge instead of Waters. Am just in receipt of your letter of the 27th, suggesting the change of the name and enclosing a petition to the Postmaster General, making the request. It's signed by a large number of the patrons of the office.

Mr. Farley, as Postmaster General, does not have anything to do with changing the names of post offices, but this is under the control of the First Assistant Postmaster General, Mr. Howes, with whom I am taking up the matter at once, and as soon as I get his decision, I will let you know, and trust it will be a favorable one.

I am returning herewith the letter from Mr. Ryan, which I thought you might want to keep. With kind personal regards,

Your friend,



Ben Cravens  
Congress of the United States  
House of Representatives

This letter, written fifty years ago this month, eventually resulted in the town of Waters, Arkansas, finally becoming Pine Ridge. (Courtesy of Ethel Huddleston Ball.)

The Jot 'Em Down Journal,  
 Volume 2, Number 4, February  
 1986. Published bi-monthly  
 by the National Lum and  
 Abner Society, P.O. Box 38,  
 Pine Ridge, Arkansas 71966,  
 a non-profit organization.  
 Membership, including a sub-  
 scription to the Journal, is  
 \$6.00 per year. Send editorial  
 and subscription correspondence  
 to Tim Hollis, Route 3, Box 110,  
 Dora, Alabama 35062.

# THE JOT 'EM DOWN JOURNAL

FEBRUARY 1986

## In This Issue



\*\*\*\*\*

### THE NATIONAL LUM AND ABNER SOCIETY

Zekatif Ossifers

PRESIDENT

Donnie Pitchford

VICE-PRESIDENT

Sam Brown

EXECUTIVE SECRETARY

Tim Hollis

PUBLICITY DIRECTOR

Rex Riffle

\*\*\*\*\*

LUM: Well, we better git to  
 stirrin' around here before  
 the rush comes.

ABNER: What rush?

LUM: The one we've been lookin'  
 fer fer forty years.

- "Partners In Time"

COVER: RKO Lobby Card from  
 PARTNERS IN TIME, 1946  
 (Courtesy of UALR Archives)

"LUM AND ABNER" is a registered  
 trademark. Used by permission  
 of Chester Lauck, Jr.



HOWDY, EVERYBODY -----	2
Uncle Donnie tries to make an important announcement.	
LUM & ABNER IN HOLLYWOOD -----	3
Part Six of this continuing series.	
MOUSEY'S CORNER -----	5
A romantical poem for Valentine's Day.	
BACK IN THE FEED ROOM -----	5
More aggravating trivia.	
KIVER TO KIVER -----	7
An examination of the "Partners In Time" movie pressbook.	
THE SECRETARY'S DESK -----	8
What's up, Doc?	
LUM & ABNER ON THE MAP -----	9
If you thought Rex Riffle had gotten carried away with "Back In The Feed Room"....	
CONVENTION UPDATE -----	10
It's later than you think.	



ABOVE: Original newspaper ad for  
 PARTNERS IN TIME (Courtesy of  
 UALR Archives)



# HOWDY, EVERYBODY

(MUSIC: "Eleanor")

ANNOUNCER: And now, let's see what's going on down at the NLAS headquarters. Wellllll, as we look in on the office today, we find Uncle Donnie calling an important meeting to order. Present are Singin' Sam Brown, Mousey Tim Hollis, and Squire Rex Riffle. Listen.

UDP: Well, gentlemen, I called this special meeting because I have a very importance announcement ta make...

SSB: Hi, Rex, how're you doing?

SRR: Just great; how're you, Veep?

MTH: How's your womern and youngins, Rex?

SRR: See this black eye?

MTH: Yeh?

SRR: Does that answer your question??

UDP: Er, fellers, this is purty importance....

SSB: Lissen up, fellers, Uncle Donnie's tryin' ta tell us somethin'.

UDP: Now, all o' you know how much me an' Aunt Laura admire one another....

SRR: Yeah, yeah, sure...say, Tim, have you lined up the guests for the next convention yet?

MTH: No, Roz Rogers said he wouldn't come unless this year we promised we wouldn't make him scrub the floor of the fire hall before we set up the folding chairs.

SSB: And Doc Withers, I mean, Clarence Hartzell said he didn't like having to patch the roof on the museum when it started raining that day.

MTH: Well, it was his own fault...when we asked him to do it, he said "Fiiiiine."

UDP: Uh, fellers, like I was sayin', me an' Aunt Laura....

SSB: Oh, did you all hear that the Tape Library might be gettin' some shows that still have the commercials for Horlick's Malted Milk in 'em?

SRR: I've got a show with Horlick's commercials in my collection somewhere... I know I do...I've listened to it twice...I think.

MTH: Hey, did I tell you about the great writeup the NLAS got in that Little Rock newspaper? Chet Lauck Junior sent it to me...we've been gettin' a lot of members fròm it.

UDP: (blurting out) Dad blame it, you all, me an' Aunt Laura is engaged!! We're gonna git hitched on June 7!! Whadderya think of that?

SSB: Doggies, Uncle Donnie, wuz that all?

MTH: Yeh, we already knowed that.

UDP: You what? But how'd you find out?!

SRR: It wuz in the county seat newspaper yesterday.

UDP: Really?? Let me see that!!!

MTH: Here 'tis.

UDP: Now, where's th' announcement?

SSB: Right here...see? Under this here headline, "Do Miracles Still Happen?"

(MUSIC: Playoff)

---

THIS ISSUE WAS PRINTED THROUGH THE FACILITIES OF

**Action** Printing Company

404 JOHNSON STREET  
DRAWER 308 — ADAMSVILLE, ALABAMA 35005

# LUM and ABNER<sup>®</sup> in HOLLYWOOD

PART SIX of a SERIES



The sixth and final RKO Lum and Abner film opens much as the first one ("Dreaming Out Loud"), with the two old storekeepers walking to work as they have done for some forty years. The day begins typically, as Lum and Abner encounter Grandpappy Spears (Danny Duncan) and Cedric Weehunt (Grady Sutton) and take time to struggle with the cantankerous cash register. Enter Tim Matthews and Janet, the familiar "romantic subplot" characters (whose own romance is secondary to the film, as you'll discover). Tim is a returning WWII vet, rekindling his relationship with Janet, a Pine Ridge girl who has adopted delusions of grandeur from living in the "big city" with her aunt. Things look rocky for this couple!

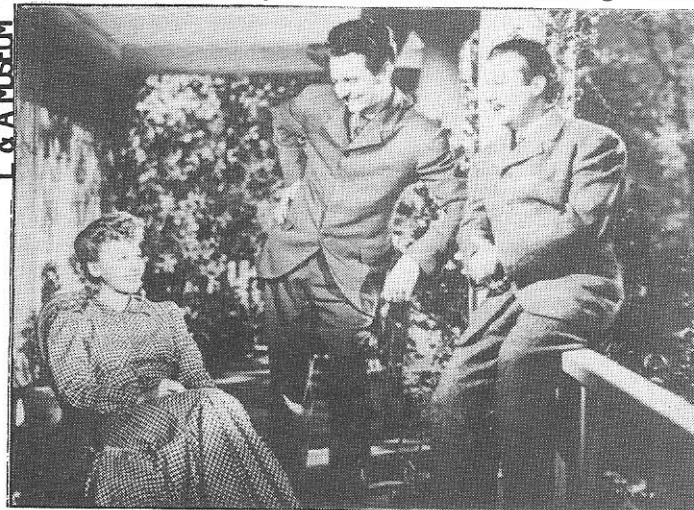
Meanwhile, conniving Squire Skimp enters with a man claiming to be the grandson of Lucky Parker, a deceased Pine Ridge man who once owned most of the property that now makes up the town. In fact, it seems L&A bought their store lot from Lucky's son Jeff, who sold his holdings when Lucky died and willed it to him. But Squire's friend, a Mr. Gerald Sharpe, claims Jeff Parker was not actually Lucky's real son, but a mere waif whom Lucky gave a home. Sharpe claims all ownership of the old Lucky Parker property, and demands \$500 per lot from the Pine Ridge families and businesses that now inhabit the land.

No legal proof can be found that Jeff Parker (also deceased) was Lucky's real son, and naturally, L & A begin to worry about losing their store, since they can't possibly raise \$500. Their attention is diverted for a time by the romantic problems of Tim and Janet. It seems Janet wants to live in an exciting town, and Tim is content with Pine Ridge. Lum recalls an exciting time in Pine Ridge's past: the first arrival of a young, feisty Abner Peabody, sputtering into town in a "horseless carriage" some forty years before!

One dissolve later, we are in Pine Ridge of 1904, witnessing a young Grandpap (then the town constable) attempting to arrest the youthful Abner for his "reckless" driving. The dashing young justice-of-the-peace of Pine Ridge is none other than raven-haired Lum Edwards, who soon recognizes Abner as his Army buddy from the Spanish-American War! Lum convinces Abner to stick around Pine Ridge for a short time before heading out to California, his original destination. Abner is soon introduced to the pleasures of Pine Ridge: home cooking, helping your neighbors, box lunch raffles, squaredancing and...most important... Miss Elizabeth Meadows, a pretty young lady who takes quite a liking to Abner. Lum is obviously quite fond of Elizabeth as well, but accidentally bids on the wrong box



L & A MUSEUM  
3



L & A MUSEUM



lunch at the raffle, leaving Abner to buy Elizabeth's.

It isn't long before young Abner falls in love with the lovely lady (poor Lum is unaware of this) and also accepts Lum's offer of a partnership in a new store (yes, we are witnessing the birth of the old Jot 'Em Down Store!). Shortly before the grand opening of the store, Lum makes a visit to the bedside of an elderly woman to help her draw up her last will and testament. Privately, the Lum of the 1940's recalls that this kindly old lady, on her deathbed, encouraged the Lum of 1904 to marry Miss Elizabeth before it is too late. Young Lum has ordered the engagement ring, but is too much the "bashful bachelor" to propose.

The 1904 grand opening of the Jot 'Em Down Store is an exciting event, made more so by Abner's unexpected announcement: he and Elizabeth are engaged! The shaken Lum, ever the faithful friend, swallows his pride and presents Abner with the very engagement ring he had intended to give Elizabeth himself. He claims he knew Abner wouldn't think of buying one, so he did it!

The wedding day arrives, with best man Lum trying to calm groom Abner. The minister gets detained by a ferry that is out of order, and the task of performing the wedding falls on "jestice-of-the-peace" Lum! In a touching ceremony, Lum marries his best friend to the girl he himself loved.

As we move ahead forty years and return to the young couple Tim and Janet with the reminiscing old L&A, we find it is now daybreak! They have spent the entire night recalling the "good old days." With the dawn returns the realization that L&A are still in hot water if they can't locate proof that Jeff Parker legally sold them their store lot. As Squire enters and badgers Lum and Abner for the settlement for his client Mr. Sharpe, Tim and Janet discover an old ledger kept by the Pine Ridge doctor who delivered Jeff Parker many years

before! They have their proof! With it, scrappy Abner (taking after his creator Tuffy Goff?) orders the scheming Squire out of the store!

The romantic reminiscing of Lum and Abner have inspired Tim and Janet to be married after all, and our old friends give them gifts to begin their life together. In a touching scene, Janet praises Lum for his painful secret of years past: he has never told Abner of his one-time love for Elizabeth. As the young couple leaves the store, we see our last glimpse of Lum and Abner in a released motion picture. They exit on a high note, with Abner refuting Lum's claim that they are "still in a rut" by exclaiming, "We're 'in the groove,' you old hep cat!!"

\*\*\*\*\*

Although this film strays from the bits of history we have learned from the radio shows, "Partners In Time" is one of the better Lum and Abner movies. Minor inconsistencies include Lum living at the boarding house instead of having his own

**COURTIN' in the OZARKS  
1904 STYLE!**

23 Skidoo! Radio's rustic funsters in love with the same gal in the happy horseless buggy days!

Laugh with them as they were 40 years ago... and today!

**LUM and ABNER**

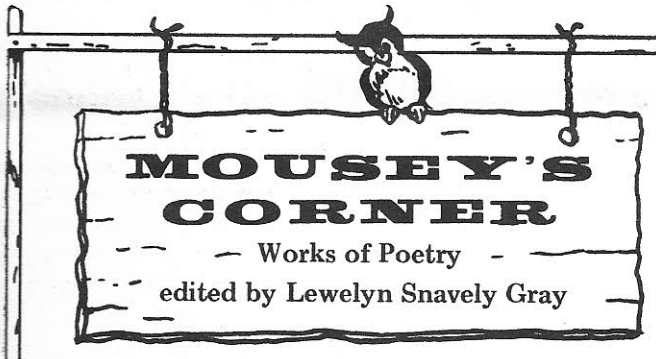
L & A MUSEUM



home, the store having a cash register instead of the old cash drawer, L & A running the post office instead of Dick Huddleston, L&A meeting in the Spanish-American War instead of meeting as youths in Pine Ridge, etc. Overlooking these points, we were impressed by the period charm of both the 1904 and 1940s segments.

Strangely enough, Lauck and Goff drop not only their old-age makeup to play the young Lum and Abner, but lose their character voices as well, and speak in their natural voices! While it often seems like "Chet Lauck Meets Dick Huddleston," Chet and Tuffy make quite a dapper duo in the flashback scenes, handling their scenes with great natural ease and charm. Likewise, the portrayals of the aged Lum and Abner are excellent; probably the finest and most seasoned performances we are likely to find on film by Lauck and Goff. The romantic elements are quite touching, and we were moved by the gentle Lum-Elizabeth-Abner triangle. You will surely enjoy this film! HINT: Watch it with someone you love!

- Uncle Donnie and Aunt Laura



"MR. ROMEO"

(Sent by Maudie Brooks to Lum Edwards)

I wish I had a valentine,  
 A charming prince that was all mine;  
 A man that would be good and true,  
 But I don't want no part of you.  
 You think you are a ladies' man,  
 But no gal could love you with that pan.  
 Your face looks like a plate of hash  
 With that handlebar mustache.  
 So I'm still looking for a man divine,  
 But you're just a comic valentine!

- February 14, 1940



CAST OF CHARACTERS

LUM ----- Chester Lauck  
 ABNER ----- Norris Goff  
 ELIZABETH ----- Pamela Blake  
 TIM MATTHEWS ----- John James  
 JANET MARLEY ----- Teala Loring  
 GRANDPAPPY SPEARS ----- Danny Duncan  
 CEDRIC/CALEB WEEHUNT ----- Grady Sutton  
 SQUIRE SKIMP ----- Dick Elliott  
 ABIGAIL ----- Ruth Lee  
 MR. SHARPE ----- Charles Jordan  
 JOSIE ----- Ruth Caldwell

"PARTNERS IN TIME"

A Jack William Votion Production

Released

RKO Radio Pictures

ORIGINAL SCREENPLAY BY

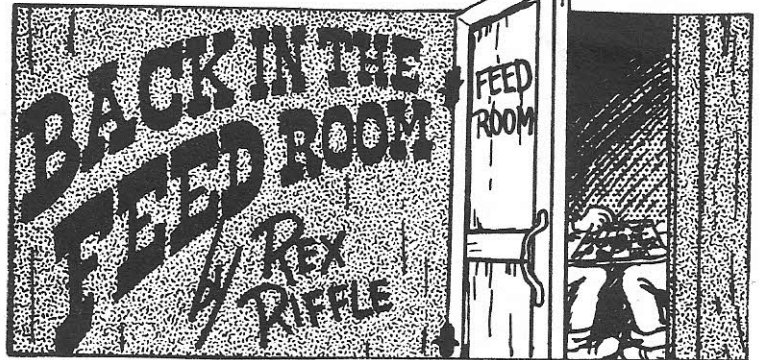
Charles E. Roberts

PRODUCED BY

Ben Hersh

DIRECTED BY

William Nigh



DID YOU KNOW:

Abner only got six votes when he ran for mayor, so he thought that with that many people hating him he needed to carry a gun.

Levi Whitney got even with the bus company for running over his hog. He bought a round-trip ticket to Oklahoma and then walked back just to spite 'em.

Ole Doc Rollins, the veterinarian, once examined a sick horse, but couldn't find what was wrong with it. So he gave it some medicine to cause colic, since he could cure that.

Grandpap has a neice who lives in Louisiana. He says that she would be good-lookin' if it wasn't for her face.



# LUM AND ABNER<sup>®</sup>

VIDEO CASSETTES  
NOW AVAILABLE!

Original LUM & ABNER<sup>®</sup> Movies  
Now on Video Cassettes !

- ☆ **Dreaming Out Loud**
- ☆ **THE BASHFUL BACHELOR**
- ☆ **TWO WEEKS TO LIVE**
- ☆ *So this is Washington*
- ☆ *Go in 'TO Town*
- ☆ **PARTNERS IN TIME**
- ☆ *Lum and Abner* **ABROAD**

**\$29.<sup>95</sup> EACH VHS OR BETA (PLEASE SPECIFY)**

SEND ORDERS TO:

LUM & ABNER ASSOCIATES  
35 CIRCLE DRIVE  
HOT SPRINGS, AR 71901

- Premium Quality, from original prints
- Allow 4 - 6 weeks for delivery
- Make checks payable to Lum & Abner Associates
- Arkansas residents add 4% sales tax

- ★ Enclose check or money order
- ★ Please indicate which movie(s) you want



# KIVER TO KIVER

During Hollywood's Golden Age, virtually every movie that made it onto the silver screen was accompanied by a "pressbook," and the L & A films were no exception. As you may know, a pressbook was a collection of halftone photographs, newspaper plugs, and other publicity stunts (some laughably absurd) intended to help the local theater manager promote the idea that the current picture he was showing was comparable in quality to the Second Coming. Unfortunately, out of the seven Lum and Abner movies, "Partners In Time" is the only one for which we have access to the original pressbook, and, like so much other priceless Lum & Abner material, it rests in the archives of the University of Arkansas at Little Rock. (Anyone knowing of pressbooks from the other films, please let us know!!)

Among the items in the book are short biographical sketches of Chet and Tuffy's supporting players in the movies. For instance, we discover that Danny Duncan (Grandpappy Spears) was born in Paducah, Kentucky, in 1897, and began his career on the showboats that traveled the Ohio and Tennessee rivers. At the time he was chosen to portray Grandpap on the screen (and, earlier, Uncle Henry Lunsford on the radio) he was a featured comedian in Ken Murray's Blackouts at the El Capitan theater in Hollywood. Dick Elliott, who replaced Oscar O'Shea as Squire Skimp after two films, was a 36-year veteran of stage and screen, and later went on to TV as the mayor of Mayberry on the Andy Griffith show. Pamela Blake, who appears as the youthful Elizabeth Meadows Peabody, was no slouch either; she began her dramatic career on radio station KYA in San Francisco, and by 1940 had become a contract player for RKO Radio Pictures.

This pressbook also gives us behind-the-scenes stories about filming, some of which probably had more truth to them than others. As an example, a new Pine Ridge set over a block long was supposedly built for "Partners In Time" (that's practically bigger than the real Pine Ridge!), and the facades had to be changed twice: once for the present-day Pine Ridge, and then again to depict the Pine Ridge of 1904. A simi-



Drawing designed for a coloring contest in connection with "PARTNERS IN TIME" (Courtesy of UALR Archives)

lar situation arose with the interior Jot 'Em Down Store set. As Abner, Norris Goff drove a vintage 1904 Flanders automobile. The box social scene featured music by a then-popular folk band, Tex Atchinson's Santa Fe Boys, while the dances were staged by Matty King, one of Hollywood's top dance directors. Finally, a 1904 fire engine was rented from the Los Angeles Fire Department for the fire alarm sequence.

Some of the bizarre publicity stunts suggested include dressing a man as a giant alarm clock to walk the streets; sending a couple in a mule-drawn buggy through town; building a comical clock with the hands revolving in the wrong direction, numerals in the wrong places, or some such idea, and placing it in the theater lobby with a sign reading, "You can't tell time by this clock, but you can have the time of your life if you see Lum and Abner in 'Partners In Time'"; sponsoring teams to imitate Lum and Abner on local radio stations (maybe this explains why Lauck and Goff protected themselves so heavily with copyrights in their later years); and then there were some suggestions that were ridiculous.

Last of all, this book leaves the distinct impression that although "Partners In Time" was released in 1946, it may well have been completed two years earlier. One indication to this effect is the repeated

statement that the film depicts Lum & Abner "forty years ago, in 1904." There is also some mention of the prop department's difficulty in obtaining steaks and butter for a boarding house scene, which sounds more like wartime 1944 than the postwar world of 1946. But strangest of all is a press release describing the on-the-air history of L & A; it states that they have been on the radio for "13 years" (1931 + 13 = 1944), and mentions that the only male voices on the show not played by Lauck or Goff are Abner's papa, Phinus Peabody (Elmore Vincent) and the oily crook B. J. Webster (Frank Graham, heard earlier as Diogenes Smith). Both of these characters were very prominent in 1944, but were long forgotten by 1946. Mysteries, mysteries; if "Partners In Time" was filmed in 1944, why was its release held up for two years?!

So, that's the story of "Partners In Time," which, because of this one press-book, we know more about than any other Lum and Abner film. Perchance someday we'll find other pressbooks, and if we do, you can bet your buttons that the results will appear right here.

- Tim Hollis



# the SECRETARY'S DESK

For those of you who have been asking about the various pieces of NLAS merchandise, here is the current inventory of what is available.

First of all, as we promised, six new pages for the Tape Library Catalog have now been released. These are pages 19-24, so, if you need them, just send us a self-addressed stamped envelope as usual. And, if you still need the whole catalog, the price is still \$3.50.

The two 60-minute NLAS cassettes are still available at \$3.00 each. The OFFICIAL NLAS CASSETTE features excerpts from the best L & A shows, introduced by your Zekatif Ossifers, while the NLAS TRIBUTE TO CLARENCE HARTZELL is a salute to Doc Withers himself. (Sneak peek: sales of these two cassettes have done so well that a third one, "Lum & Abner's Bloopers and Practical Jokes," is currently in production, and will probably be released in April.)

Also still available are the NLAS pin-back buttons, which feature the familiar NLAS logo in black on an ivory-colored background. These are \$1.50 each. Being offered for the first time are our Lum & Abner pins; these sport the famous black-and-white photo (originally a still from "Partners In Time") of L & A examining their cash register. These are also \$1.50 each.

As always, send orders for any of this merchandise to the Executive Secretary, Tim Hollis, Route 3, Box 110, Dora, AL 35062.

**WHAT SCALAWAGS THEY WERE...  
40 YEARS AGO!**

by crickety, it's their funniest picture ever!

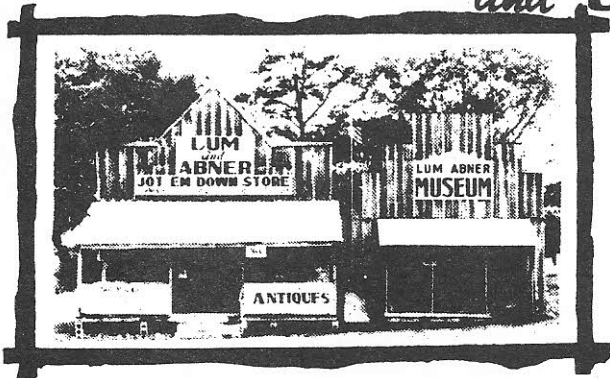
**SEE THEM AS YOUNG AS THEY USED TO BE!**  
By Gum it's Fun!

**PAMELA BLAKE · JOHN JAMES TEALA LORING · DANNY DUNCAN**

A Jack Wm. Votion Production  
Produced by DEN HEEREN - Directed by WILLIAM NIGH  
Original Screen Play by CHARLES E. ROBERTS

R K O RADIO CLUBS

Visit **The Lum and Abner Museum** and **Jot 'Em Down Store**



OPEN MARCH THROUGH NOVEMBER

9 A.M. - 5 P.M. Tuesday through Saturday

11 A.M. - 5 P.M. Sunday, and by appointment

LOCATED ON LUM & ABNER HIGHWAY 88

PINE RIDGE, ARKANSAS 71966

PHONE (501) 326-4442

TOUR BUSES WELCOME



**LUM & ABNER**  
On the Map

While you're in Arkansas for the Convention, Pine Ridge isn't the only place you might want to visit. Consider the following facts:

"Bates," a family name in Pine Ridge, is a town in Scott County, Arkansas.

"Blevins," another family name, is a town in Hemstead County.

"Dardanelle," Grandpap's favorite song, is a town in Yell County.

"Elizabeth," Abner's wife, is a town in Fulton County.

"Emmet," as in Emmet Goshen, is in Nevada County, while "Goshen" is a town in Washington County.

"Johnson," for "the old Johnson place," is a branch post office of Fayetteville.

"Redfield," as in Charlie and Winifred, is a town in Jefferson County.

Besides Pine Ridge, Arkansas also has a Pine Bluff and a Pineville. Pine Ridge and the "county seat," Mena, still have functioning post offices. Hatfield and Oden, which were mentioned many times on the show, also still have post offices. Pine Ridge is now a CPO of Oden. And finally, yet another place which received frequent mention, Board Camp, still has a post office.

- Rex Riffle

**LUM and ABNER**  
*Back Again*  
**ON YOUR RADIO**

COAST-TO-COAST  
**MON. TUE. THUR. FRI.**  
EVENINGS  
*Sponsored by* **ALKA-SELTZER**

Check RADIO GUIDE listings on the following pages for station and time

BOBB LYNES

1941 Ad








# CONVENTION

## Update

Well, folks, it's just over four months until the second annual National Lum and Abner Society Convention will be held again in Pine Ridge, Arkansas (June 14 & 15). Even though we have not lined up our special guests for this year yet, we can assure you that you will not want to miss it. The theme for this year's convention will be a celebration of Pine Ridge's 50th Anniversary (1936-1986), as well as the 150th anniversary of Arkansas' statehood. As we did last year, we list here the motels and lodges in the Pine Ridge area, in case you want to make your reservation early.

MENA AREA MOTELS: HARVEY HOUSE INN, (501) 394-3710; LIME TREE INN, (501) 394-6350; OZARK INN, (501) 394-1100; HITCHING POST MOTEL, (501) 394-2400; QUEEN WILHEMINA INN, (501) 394-2863; MENA PARK MOTEL, (501) 394-2717; HOLIDAY MOTEL, (501) 394-2611; and MONTEGA MOTEL, (501) 394-2062.

MOUNT IDA AREA MOTELS: DENBY POINT LODGE, (501) 867-3651; SHANGRI LA RESORT, (501) 867-3681; CAMP OZARK, (501) 867-2071; COLONIAL MOTEL, (501) 867-3467; LAKE OUACHITA INN, (501) 867-2643; MOUNTAIN HARBOR RESORT, (501) 867-2191; HULSEY CABINS, (501) 867-2795; and MOUNT IDA MOTEL, (501) 867-3456.



THE NATIONAL  
**LUM & ABNER**  
SOCIETY  
EXECUTIVE SECRETARY  
Route 3, Box 110  
Dora, Alabama 35062



Dr. Hal Skinner  
1293 Hurlbut Avenue  
Sebastopol, CA 95472

ADDRESS CORRECTION REQUESTED

