

Long Wave
Short Wave
News Spots
& Pictures

THE ORIGINAL U.S. RADIO NEWSPAPER'S MICROPHONE

5
Cents
the Copy
\$1.50 Year

Volume III, No. 35

WEEK ENDING SEPTEMBER 7, 1934

* Published Weekly

This and That

By Morris Hastings

THE PROGRAM schedule for next season, as announced in a recent issue of The MICROPHONE, shows clearly the strength and, more clearly still, the weakness of radio.

Its strength lies in its ability to foster characters such as AMOS 'n' ANDY, the GOLD BERGS, the personages of the "Roses and Drums" sketches, BILLY BATCH-ELOR—all of whom, it is thought apparent, many thousands of listeners do not care to be without.

At least, that's the way it seems to the sponsors of the various characters. And so, after a Summer's vacation, they return this Fall.

But popular as they may be now, they are bound like all highly persistent friends to wear out their welcome. Then what will the sponsors and radio do? For radio does not give evidence, except in rare instances, of developing any programs to take the places of the current favorites when they pass into disfavor.

Checking through the schedule again, I cannot find any indication of a new trend in radio programs either in respect to type or stars.

The one exception is that announced by NBC of a weekly hour musical show with music

(Continued on Page 15)

Communications Commission Denies Attempting 'New Deal Censorship'

Biggest Football Schedule In History Of The Networks

Best Games Of Season to be Broadcast

At least 18 major college football games will be broadcast over the Columbia network and the outstanding games of the season will also be heard over the NBC networks, starting on Saturday, September 22.

The coming gridiron season will be the fullest yet broadcast over the air. Outstanding sectional, conference and inter-sectional games will go on the air, announced by such sports broadcasters as GRAHAM McNAMEE, TED HUSING, LES QUAILLEY, FORD BOND, BILLY MUNDY and JERRY HARRISON.

Although the NBC has not yet completed plans for the season, it is probable that the outstanding contests each Saturday will go on the air. The following games will be heard over the CBS-WABC network:

On September 22, over Station WABC, the contest between Manhattan College and St. Bonaventure will be broadcast, to be followed on Friday, September 28, by the West Virginia vs. Duquesne game, which will be played at

(Continued on Page 15)

Sore Throat Helps to Win An Audition

How it feels to become a national radio star overnight was told to The MICROPHONE in an exclusive interview with ROWENE WILLIAMS, winner of the recent Columbia nationwide audition for a radio star.

Miss WILLIAMS came from comparative obscurity in Chicago to win the leading role of the program, "Hollywood Hotel," which will be heard over the WABC network beginning October 3.

"No one will ever realize the thrill that ran through me when the judges awarded the contract to Number 10," said Miss Williams. "It was coincidental that I should ask the other contestants to lean against the wall while we were awaiting the verdict of the judges. When they announced me the winner, I was glad the wall was in back of me beforehand, or I would have hurt myself falling."

"How I won is still a mystery to me," said Miss Williams in the first interview given a radio newspaper. "Just two days before I left

Leading Lady



ROWENE WILLIAMS, Chicago girl, who won the nationwide audition for the leading lady in "Hollywood Hotel."

Chicago I contracted a severe throat infection. The illness also affected my tongue, which was as raw as a piece of beef. I went to a doctor in Chicago, but he didn't relieve me much. Although I hated to take the expense money, I had every hope the

(Continued on Page 15)

Political Favoritism Is Charged

By The MICROPHONE'S Special Washington Correspondent

Steady drum-fire of charges that the Communications Commission was preparing to clamp down censorship on the radio was expected to evoke a statement from the Commission definitely indicating what it intends to do.

The Commission has no authority in law to censor any one's opinions or statements of facts over the radio. It can penalize for misleading advertising and for obscene language.

Reiterated assertions by members of the commission that no censorship as the word is generally understood was in contemplation, have failed to subdue the attack.

HAMPSON GARY, chairman of the radio division of the Commission, in his first public utterance, disavowed any intention on the part of the commission to censor.

However, he spoke of the need for high ethics in radio broadcasting and served notice the Commission would tolerate no fake advertising.

Critics argue that the Commission having the "power to license can show favoritism to broadcasters that in turn show favoritism to defenders of the "New Deal."

Senator SCHALL (R) of Minnesota, told The MICROPHONE'S spe-

(Continued on Page 15)

Contents

News Flashes Box	Page 1
Football broadcast schedule	Page 1
Communications Commission denies it is trying to censor radio programs	Page 1
This and That by Morris Hastings	Page 1
Radio's Mental Gymnasium, by EVERETT SMITH	Page 3
NBC's "Echo Chamber"	Page 3
Short Wave News	Page 3
Educational Box	Page 4
Station Directory	Page 4
Radio Lane, by JIMMY J. LEONARD	Page 5
Studiosity, by LES TROY	Page 5
Police Calls	Page 12
ROBISON'S Buckaroos	Page 7
"Raffles"	Page 13
Reflections, by DIANA HERBERT	Page 15
Nimblewits, by EVERETT SMITH	Page 15
"Dream Singer," by RALPH KIRBERRY	Back Cover

Labor Day Addresses

Two addresses to organized labor will be heard over the NBC networks on Labor Day, September 3.

WILLIAM GREEN, president of the American Federation of Labor, and FRANK MORRISON, secretary of the same organization, will speak to large gatherings in mid-Western cities.

GREEN will be heard from the City Auditorium at Wichita, Kansas, in a review of the labor developments during the past year. His address will reach the radio audience over the NBC-WEAF network at 1 P. M.

The second broadcast will occur when MORRISON addresses a labor meeting in Lakeside Park in the automobile city of Flint, Michigan.

This broadcast will be heard at 3 P. M. over the NBC-WJZ hookup.

News Flashes

WEEKDAYS

A.M.

10.30 WEAF Network: WEEI WGY WSM WFLA WSB

WABC Network: WCAU WHAS WPG KMOX WBBM WCCO WJSV

10.45 WJZ Network: WBZ WHAM KDKA WLW WBAL

P.M.

6.30 WEAF Network: WEEI WGY WSM WFLA WSB

WABC Network: WCAU WHAS WPG KMOX WBBM WCCO WJSV

7.15 WJZ Network: WBZ WHAM KDKA WLW WBAL

SUNDAYS

A.M.

11.00 WEAF Network: WEEI WGY WSM WFLA WSB

WJZ Network: WBZ WHAM KDKA WLW WBAL

P.M.

11.30 WEAF Network: WEEI WGY WSM WFLA WSB

WJZ Network: WBZ WHAM KDKA WLW WBAL

[Important news is given over these stations, generally on the hour and half hour.]

Men's Singles Tennis Aired

Plans are now being made to broadcast the National Men's Singles tennis matches from Forest Hills, Long Island, from September 4 to 8.

A summary of each day's play will be broadcast over the CBS-WABC network. A 15-minute period at 5.45 P. M. on Tuesday, September 4, will be the opening broadcast. On Wednesday the account of the play will be broadcast at 6.45 P. M. and on Thursday at 5.45 P. M.

The semifinals and the finals will be described play-by-play from 3 to 4 P. M. on Friday, September 7, and at the same time on Saturday, September 8.

This year's tournament promises to be one of the most interesting in American tennis history. FRED PERRY of England, defending champion, leads a field that includes such nationally-known players as GEORGE LOTT, LESTER STOEFFEN, SYDNEY WOOD, FRANK SHIELDS, GREGORY MANGIN and BERKELEY BELL.

Pictures

CAROLYN RICH, songstress	Front Cover
ROWENE WILLIAMS, CBS audition winner	Page 1
LORETTA LEE	Page 2
EVERETT SMITH	Page 3
ELIZABETH DAY	Page 4
BURGESS MEREDITH	Page 6
CARSON ROBISON and his Buckaroos	Page 7
ELAINE MELCHOIR	Page 8
CLAIRE WILLIS	Page 10
WALTER B. PITKIN	Page 12
FREDERICK WORLOCK as "Raffles"	Page 13
COURTENAY SAVAGE, CBS dramatic director	Page 13
CAROL DIES	Page 14
CONNIE BOSWELL	Page 15
RALPH KIRBERRY	Back Cover

Detroit Symphony

VICTOR KOLAR, conductor of the Detroit Symphony Orchestra, will present BEETHOVEN'S First Symphony in C Minor as the highlight of the second Saturday night concert from the Century of Progress in Chicago on September 1 at 9 P. M.

Saturday, September 1 - Saratoga Cup Race, CBS-WABC, 4 P.M.

Highlights

P.M.
3.30—Week-End Revue, NBC-WEAF
4.00—"Saratoga Cup" Race, CBS-WABC
10.00—Raymond Knight's Cuckoos, NBC-WEAF
10.15—Enric Madriguera's Orchestra, NBC-WEAF
11.30—Paul Whiteman's Party, NBC-WEAF
A.M.
12.30—Hollywood on the Air, Fay Wray, NBC-WEAF

Fields and Hall, WJZ WHAM KDKA
Monitor Views the News, WBZ
The Southerners, WFLA
Bailey Axton, tenor, WLW
Connie Gates, songs, WABC WCAU WHAS WPG WBBM
Danny Dee, WOR
Trio, WMCA
Louise Brabant, soprano, WGN
Parents' Forum, WNBX
12.15 P.M. EDT; 11.15 A.M. EST; 10.15 CT
Honeyboy and Sassafras, WEAF WEEL WSB
Martha and Hal, weather, WGY
Genia Fonarova, WJZ KDKA
Weather, Musicale, WBZ
Don and Babs, comedy, WLW
Saturday Syncopators, WABC WCAU WHAS WPG WIND
Gene and Charlie, WBBM
Piano, WOR
Musical Raconteur, WMCA
Doring Sisters, WGN
Highway Safety Talk, WNBX
12.30 P.M. EDT; 11.30 A.M. EST; 10.30 CT
Merry Madcaps, WEAF WLW, 30 m. (WGY, 15 m.)
Jack, Del and Ray, WEEL, 30 m.
Vic and Sade, WJZ WBZ WBAL WHAM KDKA WSM WFLA WSB
The Texans, WLW
Al Kavelin's Orchestra, WABC WCAU WHAS WBBM, 30 m. (WPG at 12.45)
Bud Fisher's Orchestra, WOR, 30 m.
Stocks, WMCA
Louise Brabant, soprano, WGN
Recordings, WNBX
12.45 P.M. EDT; 11.45 A.M. EST; 10.45 CT
Words and Music, WJZ WHAM WSM WFLA WSB, 30 m. (KDKA at 1.00)
Vagabonds, WGY
85 Notes and a Pair of Pipes, WBZ
William Penn Orchestra, KDKA, 30 m.
Home Management talk, WGN
3 Blue Chips, WMCA
Nite Owls, WNBX, 1 h.
1 P.M. EDT; 12 N. EST; 11 A.M. CT
Jan Brunasco's Ensemble, WEAF, 30 m.; WEEL from 1.10; WGY from 1.15
Stocks, WEEL WGY
Weather, 4-H Club, WBZ, 30 m.
Studio Music, WFLA
Lt. Governor Charles Sawyer of Ohio, WLW
Emil Velaen's Orchestra, WABC WCAU WHAS WPG, 30 m.; WIND, 15 m.; WBBM from 1.15
Roger Van Duzer's Orchestra, WOR, 30 m.
Mid-Day Service, WGN, 30 m.
Eli Dantzig's Orchestra, WMCA, 30 m.
1.15 P.M. EDT; 12.15 EST; 11.15 A.M. CT
Songfellows, quartet, WJZ KDKA WSM
Nota Thumann, songs, WLW
Stocks, WMCA
1.30 P.M. EDT; 12.30 EST; 11.30 A.M. CT
Dick Fidler's Orchestra, WEAF WEEL, 30 m.
Farm Program, WGY, 30 m.
Farmer's Union program, WJZ WBZ WBAL WHAM KDKA WLW WSM WFLA WSB, 30 m.
Ester Velas, Ensemble, WABC WCAU WHAS WPG, 30 m.; WBBM, 15 m.; WIND from 1.45
Theatre Club, WOR
Bud Fisher's Orchestra, WMCA, 30 m.
Market Reports and organ, WGN
1.45 P.M. EDT; 12.45 EST; 11.45 A.M. CT
Palmer House Ensemble, WGN
Farm Bureau, WNBX
2 P.M. EDT; 1 EST; 12 N. CT
Rex Battle's Ensemble, WEAF WEEL WGY, 30 m.
Dance Music, WOR, 30 m.
Garden Club Speaker and bass singer, WGN
Danny Russo's Orchestra, WABC WCAU WPG, 30 m.; WIND, 15 m.; WBBM from 2.15
Weather, markets, WHAS
Eli Dantzig's Orchestra, WOR, 30 m.
Theatre Review, WMCA
Garden Club, organ, WGN, 30 m.
4-H Club, WNBX
2.15 P.M. EDT; 1.15 EST; 12.15 CT
Georgia Wildcats, WHAS
Dorothy Allyn, soprano, Ballad Singers, WMCA
2.30 P.M. EDT; 1.30 EST; 12.30 CT
Royal Hawaiian Orchestra, WJZ WBZ WHAM KDKA WSM WFLA
NBC Farm Forum, "Radicalism and the New Deal," WJZ WBZ WHAM KDKA WSM WFLA, 30 m.
Enoch Light's music, WABC WHAS WCAU WPG WIND, 30 m.
Martha Deane, fashions, WOR, 30 m.
World Fair Orchestra, WGN
Front Page Drama, WMCA

Interest



LORETTA LEE, who sings with GEORGE HALL and his orchestra on frequent Columbia programs, watches the orchestra while waiting her cue to go on the air.

2.45 P.M. EDT; 1.45 EST; 12.45 CT
Radio Playbill, WEAF WEEL WGY, 30 m.
Royal Hawaiian Orchestra, WJZ WBZ WHAM KDKA WSM WFLA
Palmer House Ensemble, WGN
Harmonica Harmonizers, WMCA
3 P.M. EDT; 2 EST; 1 CT
Rudy Valle's Orchestra, WEAF WEEL WGY WLW, 30 m.
"The Hopeful" Race, from Saratoga, WABC WCAU WHAS WPG WIND, 30 m.
Chansonette, WABC WCAU WHAS WPG Ariel Ensemble, WOR, 30 m.
Jongleurs, WGN
"Sports Review," contests broadcast, WMCA, 2 h.
3.15 P.M. EDT; 2.15 EST; 1.15 CT
Orchestra, WGN
3.30 P.M. EDT; 2.30 EST; 1.30 CT
Week-end Revue, WEAF WEEL WGY WLW WSM WFLA, 1 h.
Among Our Souvenirs, WABC WHAS, 30 m.
Lewis White, bass, WGN
Florence Howland, soprano, Frank Ricciardi, baritone, WOR, 30 m.
3.45 P.M. EDT; 2.45 EST; 1.45 CT
Baseball, St. Louis vs. Chicago, WGN WBBM, 2 h., 15 m.
Concert, WNBX
4 P.M. EDT; 3 P.M. EST; 2 CT
Don Carlos' Orchestra, WJZ WBZ WHAM KDKA
"Saratoga Cup" Race, from Saratoga, WABC WHAS, 30 m.
Tea Time Topics, WPG, 30 m.
Apple Knockers, WCAU, 30 m.
Al and Lee Reiser, WOR, 30 m.
4.15 P.M. EDT; 3.15 EST; 2.15 CT
Oysters "R" in Season, WJZ WBZ WHAM KDKA
Story Book Lady, WNBX
4.30 P.M. EDT; 3.30 EST; 2.30 CT
Our Barn, WEAF WEEL WGY, 30 m.
Chicago Symphony Orchestra, WJZ WBZ WHAM KDKA WSM WFLA WSB, 1 h. (WLW from 4.45)
Kaltenmeyer's Kindergarten, WLW WFLA
Scott Fisher's Orchestra, WABC WCAU WHAS WPG, 30 m.
Bud Rainey, WOR
Orchestra, WNBX
4.45 P.M. EDT; 3.45 EST; 2.45 CT
Bisordi's Brass Band, WOR
5 P.M. EDT; 4 EST; 3 CT
George Sterny's Orchestra, WEAF WEEL WGY WLW, 30 m.

Little Jack Little's Orchestra, WABC WCAU WHAS WPG, 30 m.
Studio Party, WMCA, 30 m.
Organ, WNBX
5.15 P.M. EDT; 4.15 EST; 3.15 CT
The Vagabonds, WGY
5.30 P.M. EDT; 4.30 EST; 3.30 CT
Chick Webb's Orchestra, WEAF WEEL WSM WSB, 30 m. (WGY, 15 m.)
Jackie Heller, tenor, WJZ WBZ WHAM Bill and Alex, KDKA
John Barker, baritone, WLW
Jack Armstrong, All American Boy, WABC WCAU
Sanders Sisters, WHAS
Mattie Curran, songs, WPG
French Class, WOR, 30 m.
String Ensemble, WMCA
Hill Billies, WNBX
5.45 P.M. EDT; 4.45 EST; 3.45 CT
Bradley Kincaid, WGY
Little Orphan Annie, WJZ WBZ KDKA WFLA WGN
Misha Ragninsky's Ensemble, WABC WCAU WHAS, 30 m. (WPG, 15 m.)
The Texans, WLW
Trudy Thomas, songs, WMCA
Duo, WNBX
6 P.M. EDT; 5 EST; 4 CT
Al Pearce's Gang, WEAF WLW WSM, WSB, 30 m.
The Evening Tattler, WEEL, 30 m.
Breivitties, WGY
Johnny Johnson's Orchestra, WJZ WBZ WBAL, 30 m.
Weather, time, KDKA
Jack Armstrong, WLW
Broadway Collegians, WFLA, 30 m.
Musical, WGN, 30 m.
Josef Zatur's Orchestra, WOR, 30 m.
Bob Fallon's music, WMCA, 30 m.
Musical, WGN, 30 m.
Orchestra, WNBX
6.15 P.M. EDT; 5.15 EST; 4.15 CT
Bill Williams, baseball, WBZ
Ma Frasier's Boarding House, WGY
Baseball Resume, KDKA
Ted Husing, "Believe You Me," WABC WHAS WCAU WBBM
6.30 P.M. EDT; 5.30 EST; 4.30 CT
News and Tom Coakley's Orchestra, WEAF WGY WSM, 30 m. (WEEL from 6.45)
News, WEEL
Twenty Fingers of Harmony (news at 6.40) WJZ KDKA
Weather, WBZ
Jack Armstrong, WLW
News and Jan Savitt's music, WABC WCAU
Jack Armstrong (repeat) WBBM
Organ, WHAS
"Round the World in 15 Minutes," WOR
Police Series, WMCA
Ton D'Oraviz cartoonist, WGN
Sports, WNBX
6.45 P.M. EDT; 5.45 EST; 4.45 CT
John Herrick, baritone, WJZ WBAL KDKA WHAM
Edward MacHugh, WBZ
(Little Orphan Annie, WENR, WGN repeat)
Sam Robbins Orchestra, WABC WCAU WHAS WBBM
Three Naturals, WOR
Sports, WMCA
Orchestra, WNBX
7 P.M. EDT; 6 EST; 5 CT
Baseball Resume, WEAF
Three Scamps, WEEL
Bob Grant's Orchestra, WGY, 30 m.
Stamp Club, WJZ
Orchestra, news, WBZ
Stanley Metcalfe, KDKA
The Old Observer, WLW
Peter Bilo's Music, WABC WCAU
Sundown Serenade, WHAS
Ford Erick, sports, WOR
Organist, WGN
Orchestra, songs, WMCA
Orchestra, WNBX
7.15 P.M. EDT; 6.15 EST; 5.15 CT
Dr. William Foulkes, "Homespun," WEAF WGY
After Dinner Revue, WEEL
Captain Al Williams, WJZ WBZ WHAM WSM WSB
Musical Memory Contest, WFLA
Isham Jones' Orchestra, WABC WCAU WHAS WBT, 30 m. (news at 7.30)
News and William Penn Orchestra, KDKA, 30 m.
German Band, WLW
Danny Dee, WOR
Russian Group, WMCA
Palmer House Ensemble, WGN
7.30 P.M. EDT; 6.30 EST; 5.30 CT
Martha Mears, contralto, WEAF WGY
Pick and Pat, WEEL
Henry King's Orchestra, WJZ WHAM WSM, 30 m. (WBZ, 15 m.)
William Penn Orchestra, KDKA
Bob Newhall, WLW
Street Scenes, WCAU
Organ Recital, WOR, 30 m.
News, Charles Barnett's music, WMCA, 30 m.
Sports, WGN
7.45 P.M. EDT; 6.45 EST; 5.45 CT
Eddie and Ralph, WEAF WGY
Christian Science Monitor Interview, WBZ
Mary Eastman, soprano, WABC WCAU
Mary Eastman, WABC WCAU
Old Observer, WHAS
Quin Ryan, reporter, WGN
8 P.M. EDT; 7 EST; 6 CT
Don Bestor's Orchestra, WEAF WEEL 30 m. (WSM at 8.15)
R. F. D. Hour, WLW, 30 m.
Antoinette Halstead, contralto, WGY
Rochester Civic Orchestra, WJZ WBZ KDKA, 30 m.
International Sunday School Lesson, WSM
The Cocomans, WFLA
"Fats" Waller's Rhythm Club, WABC WCAU WBBM
Dinner Concert, WHAS, 30 m.
Press-Radio News and Sisters of the Uke, WPG
Concert, WOR, 30 m.
Palmer House Ensemble WGN
Three Little Funsters, WMCA
8.15 P.M. EDT; 7.15 EST; 6.15 CT
Birchell's Orchestra, WLW
Manhattan Serenaders, WABC WCAU WBBM, 30 m.
Glee Club, WGN
Archie Bleyer's music, WMCA, 30 m.
8.30 P.M. EDT; 7.30 EST; 6.30 CT
Hands Across the Border, WEAF WEEL WGY WSM WFLA WSB, 30 m.
Northern Lights, WJZ WBZ KDKA, 30 m.
Eli Dantzig's Orchestra, WOR, 30 m.
Orchestra, WGN, 30 m.
8.45 P.M. EDT; 7.45 EST; 6.45 CT
Monkey Hollow, WLW
Music, WGN

"Strikes and Money," WABC WPG WHAS One Man Minstrel, WMCA
9 P.M. EDT; 8 EST; 7 CT
One Man's Family, WEAF WEEL WGY WSM WFLA WSB, 30 m.
Jamboree Variety, WJZ WBZ WHAM KDKA WLW, 1 h.
ERA Orchestra, WBZ
Jimmy Gallagher's Orchestra, WSM
Detroit Symphony Orchestra, Victor Kolar conducting, Beethoven's "First Symphony in C Minor," Mozart's "The Magic Flute," Grieg, "The Last Spring," Gounod's "Faust," WABC WHAS WBBM, 1 h.
"Romance in Song," WOR, 30 m.
Detroit Symphony Orchestra, WABC WCAU WHAS WPG, 1 h.
"Americana," WMCA, 1 h.
Chicago Symphony Orchestra, WGN, 30 m.
9.15 P.M. EDT; 8.15 EST; 7.15 CT
The Monitor Views the News, WBZ Orchestra, WSM
9.30 P.M. EDT; 8.30 EST; 7.30 CT
Chicago Symphony Orchestra, WEAF WEEL WGY, 30 m.
Squire Hawkins, KDKA
Delmore Brothers, WSM
String Sextet, WSB, 30 m.
Eddie Lane's Orchestra, WOR, 30 m.
Wayne King's Orchestra, WGN
9.45 P.M. EDT; 8.45 EST; 7.45 CT
Kelly Sisters, KDKA
Jan Garber's Orchestra, WGN
10 P.M. EDT; 9 EST; 8 CT
Raymond Knight's Cuckoos, WEAF WEEL WGY WLW WSM WFLA WSB
Mario Cozzi, baritone, WJZ, 30 m.
Behind the Law, KDKA
Saturday Revue, WABC WHAS WBBM, 30 m.
Hawaiian Orchestra, WPG, 30 m.
John Kelvin, tenor, WOR
News and Symphony Orchestra, WGN, 1 h.
Milton Kellern's Orchestra, WMCA, 30 m.
10.15 P.M. EDT; 9.15 EST; 8.15 CT
Enric Madriguera's Orchestra, WEAF WEEL WGY WFLA WSB, 30 m., WLW, 15 m.
Weather, WBZ
Golf, KDKA
Pomson Hunters, WSM
Pianist, WOR
10.30 P.M. EDT; 9.30 EST; 8.30 CT
National Barn Dance, WJZ WBZ WHAM KDKA WLW WLS, 1 h.
Uncle Dave Macon, WSM
Senator Gerald P. Nye, WABC WCAU WIND, 30 m.
Studio Party, WHAS, 30 m.
Roger van Duzer's Orchestra, WOR, 30 m.
Eli Dantzig's Orchestra, WMCA, 30 m.
10.45 P.M. EDT; 9.45 EST; 8.45 CT
Siberian Singers, WEAF WEEL WGY WFLA WSB
Nap and Dee, WSM
11 P.M. EDT; 10 EST; 9 CT
Guy Lombardo's Orchestra, WEAF WLW, 30 m. (WEEL at 11.15)
Weather, baseball, news, WEEL
Phil Emmerton's Orchestra, WGY, 30 m.
"Gully Jumpers," WSM
Sylvia Froos, songs, WABC WHAS WPG WIND
Gari Hines Music, WBBM
Billy Hays Orchestra, WCAU
Weather and Frank Stuart's Orchestra, WOR
Ted Weems' Orchestra, WGN
Radio Scandals, WMCA, 30 m.
11.15 P.M. EDT; 10.15 EST; 9.15 CT
Barn Dance, WSM
Casa Loma Orchestra, WABC WCAU WHAS WPG WBBM, 30 m.
Organ, WGN
11.30 P.M. EDT; 10.30 EST; 9.30 CT
Paul Whiteman's Saturday Night Party, WEAF WEEL WGY WFLA WSB, 45 m. (WLW at 12.00)
Freddie Martin's Orchestra, WJZ WBZ, 30 m.
Sports, William Penn Orchestra, KDKA, 30 m.
Castle Farm Orchestra, news, WLW, 30 m.
"Friar Jar Drinkers," WSM
Auditorium Dance Orchestra, WPG, 30 m.
Anthony Trini's Orchestra, WOR, 30 m.
Dance Tunes, WGN, 3 h., 30 m.
Blue Rhythm Band, WMCA, 30 m.
11.45 P.M. EDT; 10.45 EST; 9.45 CT
Dick Messner's Music, WABC WCAU WHAS WBBM
Delmore Brothers, WSM
12 M. EDT; 11 P.M. EST; 10 CT
Johnny Johnson's Music, WGY WSB
Bronco Busters, WSM
Leon Belasco's Orchestra, WABC WCAU WHAM, 30 m.
DX Club, KDKA, 30 m.
Orville Knapp's Orchestra, WABC WCAU, WHAS WPG WBBM, 30 m.
Charles Barnett's Orchestra, WOR, 30 m.
End of Day, WMCA, 30 m.
12.15 A.M. EDT; 11.15 P.M. EST; 10.15 CT
Carefree Carnival, Meredith Willson's Orchestra, Marshall Maverick's Hillbillies, WEAF WEEL WGY WLW WFLA, 45 m.
Scores and Crook Brothers' Band, WSM
12.30 A.M. EDT; 11.30 P.M. EST; 10.30 CT
Hollywood on the Air, Fay Wray, WEAF Art Landry's Orchestra, WJZ WBZ WHAM KDKA, 30 m.
Baseball scores, "Dixie Liners," WSM
Jan Garber's Orchestra, WABC WHAS, 30 m.
Steel Pier Orchestra, WPG, 30 m.
Charles Barnett's Orchestra, WABC WHAS WBBM, 30 m.
Benny Goodman's Orchestra, WMCA
1 A.M. EDT; 12 M. EST; 11 P.M. CT
Hidden Lake Orchestra, WSM
Gene Kardos Orchestra, WABC
Harry Sosnick's Orchestra, WBBM, 30 m.
1.30 A.M. EDT; 12.30 P.M. EST; 11.30 CT
Harry Sosnick's Orchestra, WCCO WBBM Vee Davidson's Orchestra, WHAS

Synthetic Cry Baby



MOST of the baby crying done on radio programs is furnished by MADELINE PIERCE. Miss PIERCE started out as a portrait painter. She painted children. She used to talk to her small subjects and became interested in their voices. When her eyes gave out she turned to radio as an actress specializing in crying. Now the neighbors watch for days to see all the little PIERCES. But it is only Miss MADELINE rehearsing for radio.

DEVELOP YOUR SINGING VOICE
Now you too can easily learn to develop your singing voice—at home—without notes. The new singing course—"The Secrets of Correct Singing," by August Schinkowski, not only tells what every singer should and must know about using the voice in singing, but teaches how. Price only \$2.00 complete. Why spend a fortune.
A. SCHINKOWSKI, Singing Studio
1536 Sibley Ct., Dept. M., Sheboygan, Wis.

Hollow Sounds And Distant Voices Made In NBC's 'Echo Chamber'

How Radio's Bugaboo Is Put to Work

Every known cloth, wood, and weed texture has been tested by NBC's experimental laboratory to eliminate that dreaded ghost of radio stations—the echo. Now, after many years of experiment, they have finally banished this bogeyman.

Satisfied with their success, they have returned to battle their ancient enemy, not with the idea of annihilating the echo, but to capture and incarcerate it for use in broadcasting programs.

A MICROPHONE reporter recently examined one of the three rooms designed for the echo's jail. It is a soundproof room with straight, bleak, sparkling walls of tile. The floor is solid concrete. A snap of the fingers sends the sound reverberating about the enclosure greatly magnified.

At one end of the elongated room are three bell-shaped loud speakers concealed behind a steel grating. Directly opposite these speakers, at the farther end of the chamber, are two microphones.

The horns are connected to a studio most used by dramatic productions. When a script calls for Mrs. GOLDBERG to yell down a dumbwaiter to Mrs. BLOOM, the sound of Mrs. GOLDBERG's yell is carried from her microphone to the echo chamber, where it bounces against the walls and is picked up by the echo chamber microphones.

These microphones carry the reverberated voice to the control room where it is discharged to your ears. All this takes place before you can blink an eyelid. The result is the actual sound of a voice traveling down a dumbwaiter.

There is reason for two microphones in the echo chamber. On the first microphone is broadcast part of the actual sound issuing from the studio.

The second microphone is the one picking up the bouncing echo. The echo is delayed a fraction of a second and then it is "mixed" through on the normal sounds caught by the first microphone.

Delaying this sound is the masterpiece of the experimental department, which is under the direction of O. B. HANSON.

Mr. HANSON devised the idea of an echo chamber more than a year ago when the NBC was located on Fifth Avenue. Upon moving to Radio City in New York, Mr. HANSON went to work and created three of these chambers. They are now ready for use in broadcasting hollow sounds heard in old tunnels and eerie noises in ancient castles.

Radio City Party to Present Guests

The Radio City Party, a new series, which will present as guest stars the outstanding personalities in radio, will begin on Saturday, September 15, over the NBC-WJZ network at 9 P. M.

JOHN B. KENNEDY, editor and radio commentator, will act as master of ceremonies and will conduct personal interviews.

The musical side of the program will be handled by an orchestra under the direction of FRANK BLACK, NBC music director.

Radio's Mental Gymnasium Conducted By Everett Smith

Putting Puzzles On the Air Is Very Puzzling

THE PUZZLE of how to present puzzles on the air puzzled me for some time. That was a real puzzle, indeed! The answer came on one of those rare mornings when the early bird caught the worm. A well-known radio artist was saying: "Hands on the hips, heels together, bending now at the—" There it was! Mental Gymnastics!

Puzzles of one sort or another always fascinated me, and for several years I have evolved puzzleistic features for newspapers and periodicals. My "Synonym Golf" went so far as to attract a book publisher.

This experience, coupled with membership in the National Puzzlers' League, and the American Cryptogram Association, which are holding a joint convention in Boston over Labor Day weekend, together with the widespread interest on all sides in cross-words and jig-saws, convinced me that puzzles were popular with people in all walks of life.

Then why not with radio listeners? There was not, so far as I knew, such a program on the air, although the late SAM LOYD, veteran puzzler, had at various times given out certain of his well-known brain twisters.

Brains versus Brawn! That was it! Mental alertness, comprehensive knowledge, keen judgment, sound reasoning, are the qualities most needed and most desired in business today—Nimblewits!

And so to equip our mental gymnasium—your own easy chair. Paper and pencil took the place of parallel bars, Indian clubs, and trapeze, by way of apparatus. The little ol' thinkin' cap became part of the gym suit. Deletions and transdeletions



EVERETT SMITH, author of the accompanying article, "Radio Nimblewits," himself is conductor of the only radio puzzle program consistently on the air.

—the cutting down of a word, such as "Startling," by one letter at a time, yet always forming a proper word—became a "Reducing Exercise." Transpositions—using, for example, the letters A E L S and T to form ten five-letter words (can you do it?) became a "Juggling Exercise."

Even lists of words of a certain classification were introduced as "warming-up" exercises. Such lists might, at first thought, prove very simple, but with the stopwatch timed on you, how many different kinds of trees could you name in just one minute? Ready? Go?

In a personal appearance before a Junior High School group, one lad listed 15 trees in the minute—one every four seconds! Asked to read his list, he began: "Apple, Pear, Peach, Plum, Cherry—" Good work! "Aw—his ol' man is a fruit peddler," grumbled a runner-up. Maybe. But Nimblewits, just the same.

With a credit of five

Popular With All Classes Of Listeners

points for each word, and a total of 100 meaning the "genius" class, Nimblewits wrote of "sluggish brains improving under the tutelage" and of "wits sharpened." Another fan thought the mental gymnastic tests "quite revealing," a friend's score of 45 looking rather small beside her 120. No wonder it made her rather proud of herself. How she made out the following week is not revealed.

Early meetings of the Radio Nimblewits took place on Sunday afternoons at 1.15 over WBZ, "usually during our dinner hour," commented another Nimblewit, who noticed that "paper and pencil are generally included in the set-up of the dining table."

Changes in schedule finally brought the program at 12 Noon. "I find that by slipping out just before the last hymn, I can get home from church in time to listen in," said another. As now presented at 11.30 on Sunday mornings, over WBZ and WBZA, mental gymnastics seem to compete with many church services. A noticeable increase in fan mail, however, suggests the possibility that a few Bible puzzles might well be injected into a sermon now and then.

The Cryptogram—aristocrat of puzzles—has proved extremely popular with Nimblewits, but here again the phonetic similarity of certain letters, when given over the air, presented another puzzle. At the suggestion of another member of the mental gymnastic class, however, numbers were substituted, and the problem solved.

Readers of The MICROPHONE are doubtless familiar with my regular weekly column, so little need be said here about the actual types of mental teasers presented. I should dislike, however, to omit saying a word about that genial pal, "Fumble Wit," who gets punnier and punnier each week.

Aside from his pre-historic humor, however, he has several times been the means of saving me from mental embarrassment. For even Nimblewits, you know, sometimes Fumble.

Radio-Equipped Ships

Sailing the seas are 18,032 ships equipped with radio, the Bureau of International Telecommunications Union at Berne, Switzerland, reported recently.

STATION DIRECTORY
Page 4

Short Wave Is Good In Afternoon

By GEORGE LILLEY

Short wave dialing carried with it full enchantment a few evenings ago. The magic spectrums were in one of those captivating, fast becoming regular conditions when volume alone is no authoritative indication of the distance which a signal is traveling.

International lanes at 5 P. M. (all time is EST) offered programs that were absolutely beyond reproach in so far as technical quality of the transmissions were concerned. The three 25-meter stations from England, Germany and France were literally "pounding in."

At such a time when transmitters of Eastern Europe are floating through with unusually heavy signals, it becomes quite in order for those fans with the wanderlust complex to go exploring the weaker waves. There is no telling from where they may be emanating.

This was the case the other evening, and 5.40 P. M. found many dial twirlers playing with a rather obliterated voice on exactly 50 meters (6.00 megs.).

Now 50 meters is at this time of year a bit high in the wave band for real distant reception during daylight hours, but, as stated, propagation conditions were above par; and besides the strange radiation happened to be coming from a land where darkness had closed in hours before.

At first nothing could be made out other than that a woman was talking in some Continental tongue. The speech carried through until 5.57 P. M., at which time signal strength had come up a few degrees and interference from nearby code stations became less troublesome.

Then announcements in English: "Hello, hello! hello! Moscow calling!" The same calls were repeated in a few other languages. At 5.58½ P. M. a Soviet anthem wafted through the ether; with its conclusion, the Russian air voice signed-off for the day—2.01 A. M., Tuesday morning in Soviet capital.

Our station, of course, was that much sought-after RV59, high frequency relay unit of 100-kilowatt, long wave "Radio Moscow Trades Union." The latter transmitter, disseminating on 1724 meters, is the super-powered Russian outfit.

RV59 operates daily on 50

(Continued on Page 13)

Mark Twain's Introduction



MISSIP GABRILOWITSCH, conductor of the Detroit Symphony Orchestra, recalls an introduction that his father-in-law, MARK TWAIN, once made of himself, CLARA CLEMENS and DAVID BISPHAM, the singer. Said TWAIN: "Mr. Bispham and Mr. Gabrielowitsch are known the world over. We also have a young singer, as yet not so widely known. But, although Miss Clemens is possibly less famous than Mr. Bispham and Mr. Gabrielowitsch, I am sure the audience will agree with me that she is decidedly prettier than either of the other two."

EVERY subscriber to or other purchaser of The MICROPHONE is entitled to share its benefits with a friend. Write to Circulation Manager, The MICROPHONE, No. 34 Court Square, Boston, Massachusetts, giving the names and addresses of those you'd like to become familiar with The MICROPHONE. A sample copy will be sent promptly to each name given, without obligation.

Sunday, September 2 - Colonel Roosevelt, NBC-WJZ, 5.30 P.M.

Highlights

- P.M. 3.00—Detroit Symphony Orchestra, CBS-WABC 4.30—Chicago Symphony Orchestra, Eric Delamarter, conducting, NBC-WEAF 8.00—Jenny Concert, Willie Morris, soprano, WEEI Cliff Edwards, Fray and Braggiotti, "Singing Spinners," CBS-WABC 9.00—Jeanie Lang, Buddy Rogers, CBS-WABC 9.30—Album of Familiar Music, NBC-WEAF Walter Winchell, NBC-WJZ 10.00—The Hall of Fame, NBC-WEAF

(All programs are listed in Eastern Daylight Saving Time, Eastern Standard Time is one hour earlier; Central Time is two hours earlier.)

- 8 A.M. EDT; 7 EST; 6 CT Melody Hour, WEAF, 1 h. Tone Pictures, WJZ WBAL, 30 m. On the air today and organ recital, WABC, 30 m. 8.30 A.M. EDT; 7.30 EST; 6.30 CT Lew White, organist, WJZ WBAL, 30 m. Artist Recital, WABC 8.45 A.M. EDT; 7.45 EST; 6.45 CT Musicale, weather, WBZ Radio Spotlight, WABC 9 A.M. EDT; 8 EST; 7 CT Balladeers, WEAF WGY WFLA Coast to Coast on a Bus, Milton J. Cross, WJZ WBZ KDKA WHAM WLW, 1 h. Sunday Morning at Aunt Susan's, WABC WCAU WPG, 1 h. 9.15 A.M. EDT; 8.15 EST; 7.15 CT Cloister Bells, WEAF WGY WFLA 9.30 A.M. EDT; 8.30 EST; 7.30 CT Trio Romantique, WEAF WFLA Service from Union College Chapel, WGY, 30 m. 9.45 A.M. EDT; 8.45 EST; 7.45 CT Alden Edkins, bass, WEAF WFLA 10 A.M. EDT; 9 EST; 8 CT Sabbat Reveries, "Experiencing Religion," Dr. Charles L. Goodell, WEAF WGY WSM WFLA, 30 m. Southernaires, WJZ WBZ WBAL KDKA WHAM, 30 m. Church Forum, WLW, 30 m. Imperial Hawaiians, WABC WPG WHAS 30 m. Watch Tower Program, WCAU, 1 h. 10.30 A.M. EDT; 9.30 EST; 8.30 CT Mexican Typica Orchestra, Hector De Lard, baritone, WEAF WEEI WGY WLW, 30 m. Samovar Serenade, WJZ WBAL WHAM WFLA WSM, 30 m.; WBZ KDKA, 15 m. Patterns in Harmony, WABC WCAU WPG WHAS Sunday Morning Concert, WGN, 1 h., 30 m. 10.45 A.M. EDT; 9.45 EST; 8.45 CT Time, weather, WBZ Church Service, KDKA, 1 h., 30 m. Alexander Semmler, pianist, WABC WCAU WPG WHAS 11 A.M. EDT; 10 EST; 9 CT News and Vagabonds, WEAF WGY WFLA St. Paul's Cathedral service, WEEI, 1 h., 15 m. News and Morning Musicale, Joseph Stopak, violinist, WJZ WBZ WHAM WBAL WLW WSM WFLA, 30 m. Children's Program, WABC, 1 h. Rhoda Arnold and Taylor Buckley, WHAS, 30 m. Children's Hour, WCAU Colton Manor Ensemble, WPG, 30 m. 11.15 A.M. EDT; 10.15 EST; 9.15 CT Hall and Gruen, pianists, WEAF WGY WFLA 11.30 A.M. EDT; 10.30 EST; 9.30 CT Capitol Family, Major Bowes, WEAF WFLA, 1 h.; WSM, 15 m. (WGY, 45 m.) Richard Maxwell, tenor, WJZ WHAM WLW Radio Nimbles, Everett Smith, MICROPHONE Columnist, WBZ Salt Lake City Tabernacle Choir, WPG, 1 h., WHAS, 30 m.; WABC from 12 11.45 A.M. EDT; 10.45 EST; 9.45 CT Pontom Strings, WJZ WBZ WLW, 30 m. (WHAM, 15 m.) Time, weather, WBZ First Baptist Church, WSM, 45 m. 12 N. EDT; 11 A.M. EST; 10 CT Presbyterian Church Service, WHAM, 1 h., 30 m. Watchtower Program, WCAU Church Service, WHAS, 30 m. Sunday Worship, WGN, 1 h. Comics, WOR, 30 m. 12.15 P.M. EDT; 11.15 A.M. EST; 10.15 CT Musical Turns, WEEI Weather, scootimus, WGY Gould and Shefter, WJZ WBAL WHAM KDKA WLW Time, Weather, Temperature, WBZ Mid-Day Idylls, WMCA Musical Raconteur, WMCA 12.30 P.M. EST; 11.30 A.M. EST; 10.30 CT University of Chicago Round Table, WEAF WEEI WGY, 30 m. Radio City Music Hall Symphony, Erno Rapee conducting, Schecter's "Turkmenian Suite"; Knipper's "Praludium Scherzo"; "Fable of the Clay God," WJZ WBZ WHAS The Romany Trail, WABC WCAU WPG WHAS, 30 m. Moments of Melody, WOR

- 12.45 P.M. EDT; 11.45 A.M. EST; 10.45 CT "The Old Observer," WOR Concertos, WMCA 1 P.M. EDT; 12 N. EST; 11 A.M. CT Dale Carnegie, "Little Known Facts About Well-Known People," WEAF WGY, 30 m. Morey Pearl's Orchestra, WEEI, 30 m. First Presbyterian Church, WSM, 1 h. Ann Leaf at the Organ, WABC WCAU WPG, 30 m. (WHAS at 1) Milban String Trio, WOR 1 h. Comics, WGN, 1 h. 1.15 P.M. EDT; 12.15 EST; 11.15 A.M. CT Musical Raconteur, WMCA 1.30 P.M. EDT; 12.30 EST; 11.30 A.M. CT Surprise Party, Mary Small, Robert Simmons, tenor, William Wirtges' Orchestra, WEAF WEEI WGY Church in the Hills, WLW Biblical High Lights, Dr. Frederick K. Stamm, WJZ WBZ KDKA WBAL WHAM, 30 m. Melody's Garden, WFLA Compinsky Trio, Brahms' "Trio in E Flat," Opus 40, WABC WCAU WPG WHAS, 30 m. Rhythm Boys, WPG News, WMCA 1.45 P.M. EDT; 12.45 EST; 11.45 A.M. CT Devora Nadworney, contralto, WEAF Orchestra, KDKA Jesters, WLW Arden and Lewis, songs, WMCA 2 P.M. EDT; 1 EST; 12 N. CT Mohawk Treasure Chest, WEAF WEEI WGY WLW WFLA, 30 m. South Sea Islanders, WJZ WBZ WBAL KDKA, 30 m. String Music, WSM, 30 m. Edith Murray, songs, WABC WHAS WPG "Photography as an Art," WOR Harrison Jubilee Choir, WMCA, 30 m. The Whistler and his Dog, WGN 2.15 P.M. EDT; 1.15 EST; 12.15 CT Piano Pointers, WABC WHAS WCAU Paola Autori, soprano, WOR Palmer House Ensemble, WGN 2.30 P.M. EDT; 1.30 EST; 12.30 CT The Tune Twisters, WEAF WEEI WGY, 30 m. Concert Artists, Walter Preston, baritone, WJZ WBZ WHAM WBAL WLW KDKA WSM, 30 m. (WFLA from 2.45) Beale Street Boys, WABC WCAU WHAS, WPG Violin, Piano, WOR, 30 m. Three Little Funsters, WMCA, 30 m. Baseball, two games, St. Louis vs. Chicago, WGN, 2 h., 30 m. 2.45 P.M. EDT; 1.45 EST; 12.45 CT Tito Guizar, WABC WCAU WHAS Violin Orchestra, WPG 3 P.M. EDT; 2 EST; 1 CT Talkie Picture Time, June Meredith, WEAF WEEI WGY WSM, 30 m. Organ Recital, WJZ WBZ WHAM KDKA WFLA, 30 m. "Writing for Publication," Ralph D. Chamberlin, WBZ Church in the Hills, WLW Detroit Symphony Orchestra, Brahms' "Third Symphony," from Prince Igor, Polovetzian Dances," WABC WCAU WHAS, 1 h. Frank Stewart's music, WOR, 30 m. Gospel Message, WPG Coral Islanders, WMCA, 30 m. 3.15 P.M. EDT; 2.15 EST; 1.15 CT Southern College, WFLA 3.30 P.M. EDT; 2.30 EST; 1.30 CT Dancing Shadows, WEAF WEEI WGY, 30 m. Temple of Song, Chicago A Capella Choir, Ruth Lyon, soprano, WJZ WBZ KDKA WLW WHAM WBAL WSM WLW WFLA, 1 h. Beginning Again, WOR Calvary Symphony Orchestra, WMCA, 1 h. 3.45 P.M. EDT; 2.45 EST; 1.45 CT "Wishing," WOR 4 P.M. EDT; 3 EST; 2 CT John B. Kennedy, news commentator, WEAF WEEI WGY WLW WSM Buffalo Variety Workshop, Buffalo Broadcasting Co. concert orchestra, WABC WCAU WHAS, 30 m. Eli Dantzig's Orchestra, WOR, 30 m. 4.15 P.M. EDT; 3.15 EST; 2.15 CT Lillian Bucknam, soprano, WEAF WEEI WSM Carmelo Cascio, pianist, WGY The Texans, WLW 4.30 P.M. EDT; 3.30 EST; 2.30 CT Chicago Symphony Orchestra, Eric Delamarter conducting, WEAF WEEI WGY, 1 h.; WLW, 30 m. Pedro Via's Orchestra, WJZ WBZ WSM Shady Side Church Vespers, KDKA, 1 h. Oregon on Parade, WABC WCAU WPG WHAS, 30 m. Lee Conrad, Marjorie Tremont, piano duo, WOR Musicale, WMCA 4.45 P.M. EDT; 3.45 EST; 2.45 CT Harriet Ware Birthday Anniversary program, WJZ WBZ WSM "The Otter in Art," WOR 5 P.M. EDT; 4 EST; 3 CT Serenade, WEAF WEEI, 30 m. National Vespers, Dr. Paul Sherer, "The Fruit of Experience," WJZ WBZ WFLA, 30 m. The Playboys, WABC WCAU WPG WHAS Josef Zatur's Orchestra, WOR Family Prayer Period, WLW, 30 m. Afternoon Musicale, WGN, 1 h. Young People's Church, WMCA, 1 h. 5.15 P.M. EDT; 4.15 EST; 3.15 CT "Poet's Gold," David Ross, WABC WCAU WPG WHAS 5.30 P.M. EDT; 4.30 EST; 3.30 CT "The House by the Side of the Road," Tony Wons, WEAF WEEI WGY, 30 m. Radio Explorers' Club, Col. Theodore Roosevelt, Jr., WJZ WBZ WHAM Frank Crumit and Julia Sanderson, WABC WCAU WHAS, 30 m. President Hotel Ensemble, WPG, 30 m. Larry Taylor, baritone, WOR 5.45 P.M. EDT; 4.45 EST; 3.45 CT Shura Cherkassky, pianist, WJZ WBZ KDKA WSM WFLA Naturals, WOR

Blonde Actress



ELIZABETH DAY, radio actress, who has been heard on the "California Melodies" program and who returns this Fall in the dramatic series, "Roses and Drums."

- 6 P.M. EDT; 5 EST; 4 CT Catholic Hour, Madiaevalists, Choir, WEAF WEEI WGY WSM WFLA, 30 m. Heart Throbs of the Hills, WJZ WBZ WHAM, 30 m. Those Three Girls, KDKA Vox Humana, WLW, 30 m. Organ, Herbert Koch, WHAS Uncle Don, WOR, 30 m. Radio Party, WMCA, 30 m. Doring Sisters, WGN 6.15 P.M. EDT; 5.15 EST; 4.15 CT Baseball, KDKA Nick Lucas, WABC WCAU WHAS Lawrence Saderno and Orchestra, WGN Around the 19th Hole, WPG 6.30 P.M. EDT; 5.30 EST; 4.30 CT Henry King's Orchestra, WEAF WEEI WGY WFLA, 30 m. International Tidbits, WJZ KDKA WBAL WHAM WLW, 30 m. Time, Weather, WBZ Fred Waller, tenor, WSM Summer Musicale, WABC WCAU, 30 m. Baseball, WOR Piano Duo, WMCA Wayne King's Orchestra, WGN, 30 m. 6.45 P.M. EDT; 5.45 EST; 4.45 CT Paradise Islanders, WBZ Ross Penton Orchestra, WSM Jack Berger's Orchestra, WOR, 30 m. Drama, WMCA 7 P.M. EDT; 6 EST; 5 CT "K." Drama, WEAF WEEI WGY, 30 m. Charles Previn's Orchestra, Morin Sisters and Norsemen Quartet, WJZ WBZ WHAM WLW KDKA WSM WFLA, 30 m. "Peter, the Great," drama, WABC WPG WHAS, 30 m. Comedy Stars of Hollywood, WCAU Gypsy Ensemble, WMCA Anson Week's music, WGN 7.15 P.M. EDT; 6.15 EST; 5.15 CT Comedy Stars, WOR Street Forum, WMCA Wayne King's Orchestra, WGN 7.30 P.M. EDT; 6.30 EST; 5.30 CT Arlene Jackson, contralto, WEAF WGY Garden talk, WEEI, 30 m. (scores at 7.50) Musicale Art Quartet, Ernest Chausson's "Concerto in D Major," WJZ WBZ WHAM KDKA WSM WFLA, 30 m. Chicago Knights, WABC WCAU WPG, 30 m. Scores, Smoke Dreams, WLW, 30 m. Ensemble, WHAS, 30 m. Portable Theatre Players, Henry Stillman, director, WOR, 30 m. Country Club Program, WMCA, 30 m. Concert, WGN, 30 m. 7.45 P.M. EDT; 6.45 EST; 5.45 CT Wendell Hall, songs, WEAF WGY Baseball scores, WEEI 8 P.M. EDT; 7 EST; 6 CT Jimmy Durante and Rubinoff's Orchestra, WEAF WGY WBZ WLW WSM WFLA, 1 h. The Jenny Concert, Willie Morris, soprano, WEEI, 1 h. "Goin' to Town," WJZ WHAM KDKA, 1 h. Jerry Cooper, "Singing Spinners," sextet, WABC WHAS, 1 h.; WCAU, 45 m. Columbia Variety Hour, Cliff Edwards, Fray and Braggiotti, Do Re Mi Trio, Vera Van, Jerry Cooper, "Singing Spinners," sextet, WABC WHAS, 1 h.; WCAU, 45 m. "Chansonette," WOR, 30 m. Lou Becker's music, WMCA Hal Kemp's Orchestra, WGN 8.15 P.M. EDT; 7.15 EST; 6.15 CT Ensemble, WGN Soiree Musicale, WMCA, 30 m. 8.30 P.M. EDT; 7.30 EST; 6.30 CT Dance Orchestra, WOR, 30 m. Bridge Talk, WGN, 30 m. 8.45 P.M. EDT; 7.45 EST; 6.45 CT Fur Trappers, WCAU Melody Moods, WMCA 9 P.M. EDT; 8 EST; 7 CT Manhattan Merry-Go-Round, Armida, David Percy, Jacques Renard's music, Rachel Carlez, WEAF WGY, 30 m. Nine O'Clock Revue, WEEI, 30 m. Headliners, Al Goodman's music; the Modern Choir; Frank Parker, tenor; Pauline Alpert, Onka Lundh, Stoopnagle and Budd, WJZ WBZ WHAM KDKA WBAL WLW WSM WFLA, 30 m. Jeanie Lang and Buddy Rogers' Orchestra, Three Rascals, WABC WCAU, 30 m. Songs in My Heart, WHAS "Operatic Miniatures," WOR, 30 m. Chicago Symphony Orchestra, WGN, 1 h. 9.15 P.M. EDT; 8.15 EST; 7.15 CT Hotel Traymore Orchestra, WPG

- Voice of Friendship, WHAS News and Buck Nation, WMCA 9.30 P.M. EDT; 8.30 EST; 7.30 CT American Album of Familiar Music, Frank Munn, Virginia Rea, WEAF WEEI WGY WSM WFLA, 30 m. Walter Winchell, WJZ WBZ WHAM WBAL KDKA WLW Fred Waring's Pennsylvanians, WABC WCAU WHAS WPG, 30 m. Dance Tunes, WOR, 30 m. Old Songs and New, WMCA, 30 m. 9.45 P.M. EDT; 8.45 EST; 7.45 CT Drama, Tom Powers, Leona Hogarth, "A Gentleman's Gentleman," by Clyde North, WJZ WHAM KDKA Bill Williams, WBZ Unbroken Melodies, WLW Dance Orchestra, WOR, 30 m. 10 P.M. EDT; 9 EST; 8 CT Hall of Fame, Gus Arnheim's music, WEAF WEEI WGY WLW WSM, 30 m. Madame Schumann-Heink, Harvey Hays, WJZ WBZ WHAM KDKA WFLA Wayne King's Orchestra, WABC WCAU WHAS, 30 m. Steel Pier Orchestra, WPG, 30 m. Ensemble, WOR Texas Cowboys, songs, WMCA, 30 m. News, WGN 10.15 P.M. EDT; 9.15 EST; 8.15 CT Mrs. Montague's Millions, drama, WJZ WFLA YMCA Talk, KDKA St. Cecilia's Glee Club, Associated French Societies, WBZ Three Marshalls, WOR Chicago Symphony Orchestra, WGN, 45 m. 10.30 P.M. EDT; 9.30 EST; 8.30 CT Canadian Capers, WEAF WEEI WGY WSM WFLA, 30 m. L'Heure Exquise, WJZ WBZ KDKA WBAL WHAM WLW WFLA, 30 m. Melody Masterpieces, WABC WCAU WPG, 30 m. "Sunday Evening With You," WHAS, 30 m. "Vignettes," WOR, 30 m. The Wandering Poet, WPG Charles Barnett's Orchestra, WMCA 10.45 P.M. EDT; 9.45 EST; 8.45 CT Y. M. C. A. Program, KDKA Bob Fallon's Orchestra, WMCA 11 P.M. EDT; 10 EST; 9 CT Baseball Scores, WEAF Harold Stern's Orchestra, WEEI WGY, 30 m.; WEAF from 11.15 Roxanne Wallace, WJZ WHAM WFLA Weather reports, "Song Painter," WBZ Weather, KDKA Zero Hour, WLW, 30 m. Little Jack Little's Orchestra, WABC WCAU WPG WHAS, 30 m. Weather, Charles Barnett's Orchestra, WOR, 30 m. Lewis White, basso, WGN 11.15 P.M. EDT; 10.15 EST; 9.15 CT Jesse Crawford, organ, WJZ WBZ KDKA Lum and Abner, WGN Udo's Tango Orchestra, WMCA 11.30 P.M. EDT; 10.30 EST; 9.30 CT Portland, Maine Press Herald, broadcast to Byrd Expedition, WEAF WEEI WGY WSM WFLA WBS, 30 m. News and Freddie Berrens' Orchestra, WJZ WBZ WHAM KDKA, 30 m. Tea Leaves and Jade, WLW, 30 m.

Educational

- Monday, September 3 1.00 P.M.—"Preventing Delinquency," talk by Jessie V. Condit, WOR Tuesday, September 4 3.30 P.M.—"Creole Gumbo and Its Songs," talk by Edward L. Tinker, au.hor. NBC-WEAF Wednesday, September 5 3.30 P.M.—"A Layman Looks at Music," talk, NBC-WEAF

- Glen Gray's Orchestra, WABC WCAU WHAS Isham Jones' Orchestra, WPG, 30 m. Frank Stewart's Orchestra, WOR, 30 m. Wayne King's Orchestra, WGN 11.45 P.M. EDT; 10.45 EST; 9.45 CT Joe Reichman's Orchestra, WABC WCAU WHAS Jan Garber's Orchestra, WGN, 30 m. 12 M. EDT; 11 P.M. EST; 10 CT News, Eddie Duchin's music, WEAF WGY WSM WFLA Mills Blue Rhythm Band, WJZ WBZ KDKA WLW, 30 m. Red Nichols' Orchestra, WABC WCAU WPG WHAS, 30 m. Anthony Trini's Orchestra, WOR 12.15 A.M. EDT; 11.15 P.M. EST; 10.15 CT Russ Columbo, baritone, WEAF WGY WLW WSM WFLA Ted Weems' Orchestra, WGN 12.30 A.M. EDT; 11.30 P.M. EST; 10.30 CT Hollywood on the Air, WEAF WGY WFLA, 30 m. Clyde Lucas' Orchestra, WJZ WBZ WHAM KDKA WLW, 30 m. Hidden Lake Orchestra, WSM Henry Busse's' Orchestra, WABC WCAU WHAS, 30 m. Enoch Light's Orchestra, WPG Hal Kemp's Orchestra, WGN 1 A.M. EDT; 12 M. EST; 11 P.M. CT Coney Island Orchestra, WLW, 30 m. Miller Welch's Music, WHAS, 30 m. Bob Pacelli's Orchestra, WGN, 30 m.

New Program For Philosopher Wons

On Sunday, September 2 at 5.30 P.M., TONY WONS, radio's friendly philosopher, will make his NBC debut over the WEAF network. WONS will play the part of a retired actor who welcomes all his friends and neighbors to his "House By The Side Of The Road".

Station Directory

Table with 4 columns: Station, Chain, K.C. Watts, Location. Lists various radio stations across the country with their respective power ratings and locations.

CHAINS: NBC, National Broadcasting Company; CBS, Columbia Broadcasting System; YN, Yankee Network; DIX, Dixie Network; ABS, American Broadcasting System; CRC, Canadian Radio Commission; NEN, New England Network.

Radio Lane

By Jimmy J. Leonard

NEW YORK is all agog because of the recent drive opened by five of the nation's best band leaders to purify the lyrics sung by broken-hearted wailers. Many other leaders and music school heads are backing up the lyric reformer's platform.

One group headed by ARTHUR CREMIN, director of the New York School of Music, claims that GUY LOMBARDO, CAB CALLOWAY and



GUY LOMBARDO

CLAUDE HOPKINS are undermining the mind's of the nation's children by use of suggestive words. And JACK DENNY and DON BESTOR agree with him.

Personally, this section of your newspaper thinks the "reformers" a trifle soggy headed. The "drive" has all the earmarks of a "publicity campaign." I might ask anybody what it is they like

about GUY LOMBARDO'S radio performance, and I'm safe nine times out of nine they will answer that it is his delightful tempo. Certainly no one would answer that it was his "suggestive" lyrics.

Nor do lyrics matter, anyhow. Few ever listen to the words of a song. Half of the listening singers are hummers, and if they break into a word it is usually a mumbled "moon," "June," or "love."

CAB CALLOWAY'S lyrics are not exactly baby rhymes. His "Kickin' the Gong Around" is a "coke sniffin'" masterpiece, but, as is usually the case, "MINNIE" comes to no good end. I'm sure the song never incited the innocent to indulge in MINNIE'S pastime.

If the "reformers" really wish something to reform why don't they go the limit in preventing children at the tender ages of from three to thirteen from singing the songs of adult love-lorners? Baby ROSE MARIE and her ilk should be given a spanking.

The people commercializing on the pro-consciousness of these youngsters should be "reformed" into leaving the country. I am surprised at WILLIAM EARLE, of WHDH, for allowing little tots to sing love songs.

It doesn't speak too well for their parents, either. A drive against this practice would win a glad hand from both listeners and columnists.

DENNIS KING will enact favorite roles every Thursday eve. He was supposed to have started radio acting August 3, but contracts take time to make. HENDRICK WILLEM VAN LOON will appear on the "University of the Air" throughout the cold months. When the Prince and Princess KAYA of Japan called at Radio City they insisted upon hearing a rehearsal of the mystery thriller, K-7.

ROWENE WILLIAMS, "Hollywood Hotel" contest winner, certainly was not picked with ZIEGFELD'S specifications of loveliness in view. She is a former opera singer, and she comes as near looking like an opera diva as possible.

She is a synthetic blond, with a beautiful set of teeth. She thought New York would be as hot as Chicago, and nearly froze to death. Although its time is still being withheld, the hour show, "Hollywood Hotel," will take the air on October 3.

THE ORIGINAL RADIO NEWSPAPER'S MICROPHONE

VOLUME III Saturday, September 1, 1934 NUMBER 35

Publisher, JOHN K. GOWEN, Jr. Business Manager, PHILIP N. HOBSON Editor, G. CARLETON PEARL Managing Editor, MORRIS HASTINGS A weekly newspaper, The MICROPHONE is published every Saturday at Boston, Massachusetts, by The MICROPHONE, Inc.

Entered as second class matter August 11, 1933, at the post office at Boston, Massachusetts, under the Act of March 3, 1879.

The MICROPHONE will not be responsible for unsolicited manuscripts unless they are accompanied by return postage.

Subscription for one year, \$1.50 postpaid. Single copies, five cents each.

Advertising rates on application to the Business Manager.

Offices, No. 34 Court Square, Boston, Massachusetts.

Telephones (connecting all departments) LAFayette 2860 and 2861.

Undue Alarm



DRAWN by Ireland for the Columbus, Ohio, Dispatch, this cartoon, captioned "Reelin' Em In," is reprinted by Review of Reviews with this comment:

"Government licensing of radio stations places a powerful weapon—in effect: censorship over adverse criticism—in the hands of any political party in power."

Probably Review of Reviews will not agree with The MICROPHONE that the ether waves belong to the public, and that the public has a right to control them through its duly elected or appointed representatives. Perhaps Review of Reviews feels that the people are unfit to govern themselves?

Private enterprise controls much in this country, but in the last analysis it does not and certainly should not control the ether waves.

The MICROPHONE has plenty of faith in the ability of the American public to combat censorship with intelligence.

Producers Forgetting "Simple Technique"

By DICK TEMPLETON
New York Correspondent

WITH program builders scurrying to line up their Fall menus — which they hope will be tempting — a word of advice seems called for. All right then, here it is "Lest we forget!"

And to amplify further, what we really mean is: "Lest we forget in building programs that a show doesn't have to be terrifically complicated in order to entertain!"

With their wild rushes to dazzle the eyes of the yokels many of the lads responsible for programs have forgotten the meaning of the word "simplicity."

Yet the A. & P. Gypsies have gone along for quite a few years with a program aimed solely at pleasing the

ear instead of startling the wits out of listeners or of making them say "oh" and "aw."

Cities Service has done pretty well with an orchestra, a good soprano and a fine tenor. On the other hand another oil company is literally saying, "Look what we can pull out of the barrel!" with the aim centered on Europe and the result has been largely static.

Your correspondent, a bearded man in so far as radio goes, recalls an old WJZ program. SAM HERMAN played the xylophone, LOU RADERMAN the violin, ANDY SANELLA the guitar and saxophone. The Revelers sang. That show lasted four years, shifting from one sponsor to another. It was simple, but it was melody

and it lasted.

With JACK BENNY and his troupe shifting to another sponsor, marking BENNY'S fourth practically successive sponsor, it is indication that a simple program that has humor in it is just about top in the comedy field.

Studiosity

By Les Troy

WE STARTED a story last week about the COMPINSKY Trio, distinguished players of chamber music. I'll repeat a bit for those who did not read the first part in last week's column.

The three COMPINSKYS were driving from their Summer home in upper New York State to Albany, where they were to play over a radio station. Being late, they drove fast, were arrested and had to pay a judge ten dollars. Then they explained who they were and why they were hurrying. The judge advised them to keep on hurrying and they might possibly reach the radio station in time.

They went so fast that their car overheated and stopped in a burst of steam in front of a house five miles from



KING GEORGE V

Albany. ALEX COMPINSKY, seeing an elderly lady on the lawn near the car, said, "Don't touch this car, madam. It's hot." Then the trio, grabbing their violin cases, commandeered a passing automobile and went on.

Meanwhile, worried about the "hot car," the lady summoned the fire department. Finding no fire, and being shown the car, the firemen told the lady that a "hot car" was what gangsters called a stolen auto.

The lady called the police and told them that two tough gangsters and their "moll" held up a passing motorist with machine guns under their arms and hurried away.

There was a reception for the COMPINSKYS when they returned for their car. They were once more taken to court. But everything was finally cleared up.

Royalty will be heard on the air on September 26 when King GEORGE and Queen MARY of England participate in the launching of the world's largest ocean liner, "The Victoria." The broadcast will be relayed from the Clydebank shipyard to both the NBC and Columbia networks and will be broadcast in England over the British Broadcasting Corporation's stations.

The worst pun of the week comes from the Columbia studios in New York. WALTER B. PITKIN, now a radio commentator as well as a college professor, has three best-sellers on the market all at once. Aware of his success and amazed at the amount of material he can turn out in a short time (he wrote a book recently in three weeks) his admirers now call him "The Bottomless PIT-KIN."

Another writer of some note is turning to radio. J. P. McEVoy is going to write the sketches of the new "Hollywood Hotel" program which begins in October and features DICK POWELL and the audition winner, ROWENE WILLIAMS.

To Subscribe to The Microphone

Fill out the blank and mail with cash, money order or check to The MICROPHONE, 34 Court Square, Boston, Mass.

(Please print)

Name.....

Street.....

City or Town.....

State.....

(Subscription \$1.50 per year, postpaid)

Monday, September 3 - A. F. Of L. Address on NBC-WJZ, 1 P.M.

Highlights

P.M.

- 3.30—"Sports Review," ABS-WMCA
- 4.30—Chicago Symphony Orchestra, NBC-WJZ
- 6.00—National Tennis Resume, NBC-WEAF
- 8.00—Kate Smith, CBS-WABC
- 8.30—Gladys Swarthout, NBC-WEAF
- 9.00—Gypsies, Frank Parker, NBC-WEAF
- Minstrels, Joe Parsons, basso, NBC-WJZ
- 9.30—Lud Gluskin, Henrietta Schumann, CBS-WABC
- Joe Cook and Donald Novis, NBC-WEAF
- 10.00—Gene Arnold, NBC-WEAF

(All programs are listed in Eastern Daylight Saving Time, Eastern Standard Time is one hour earlier; Central Time is two hours earlier.)

- 6.45 A.M. EDT; 5.45 EST; 4.45 CT
Tower Health Exercises, WEAJ WEEI, 1 h.
- 7 A.M. EDT; 6 EST; 5 CT
Prayer, WLW
Musical Clock, WJZ KDKA, 1 h.
- 7.30 A.M. EDT; 6.30 EST; 5.30 CT
Yoichi Hiraoka, xylophonist, WJZ Organ Reveille, WABC, 30 m.
Top o' the Morning, WLW, 30 m.
- 7.45 A.M. EDT; 6.45 EST; 5.45 CT
Pollock and Lawnhurst, WEAJ WGY
Melody Race, WEEI
Jolly Bill and Jane, WJZ
- 8 A.M. EDT; 7 EST; 6 CT
Organ Rhapsody, WEAJ, 30 m. (WEEI at 8.15)
- E. B. Rideout and Current Events, WEEI
Musical Clock, WGY, 30 m.
Morning Devotions, WJZ WBZ KDKA
Prayer, WLW
Lyric Serenade, WABC WCAU, 30 m.
Playground Echoes, WPG
- 8.15 A.M. EDT; 7.15 EST; 6.15 CT
Landt Trio and White, WJZ WBZ WHAM
KDKA WBAL
Devotions, WLW
Health Exercises, WPG
News, WNBX
- 8.30 A.M. EDT; 7.30 EST; 6.30 CT
Cheerio, WEAJ WEEI WGY WLW, 30 m.
Low White at the dual organ, WJZ WHAM
WBAL KDKA, 30 m.
Time, weather, WBZ
Organ, WSM
Breakfast Rhythm, WFLA
Marion Carley, pianist, WABC
Organists, WPG, 30 m.
- 8.45 A.M. EDT; 7.45 EST; 6.45 CT
Radio Spotlight, WABC
- 9 A.M. EDT; 8 EST; 7 CT
Morning Glories, WEAJ
Annette McCullough, WGY
Breakfast Club, orchestra, Jack Owens, tenor, WJZ WBZ WBAL WFLA, 1 h. (KDKA, 30 m.)
- Sait and Peanuts, WLW
The Song Reporter, Dick Newton, WABC
WCAU
Devotions, WHAS WSM, 30 m.
Early Birds, WNBX
- 9.15 A.M. EDT; 8.15 EST; 7.15 CT
Don Hall Trio, WEAJ WEEI WGY WLW
Harmonies in Contrast, WABC WCAU
- 9.30 A.M. EDT; 8.30 EST; 7.30 CT
Eva Taylor, vocalist, WEAJ WEEI
Little Jack Little's Orchestra, WGY
Hymns, WLW
Metropolitan Parade, WABC, 45 m.; WPG, 30 m.; WCAU from 9.45 (WHAS at 10.00)
- Georgia Wildcats, WHAS
- 9.45 A.M. EDT; 8.45 EST; 7.45 CT
Madrinata, chorus, Carlton Martin, director, WEAJ WEEI WLW
Devotions, WGY
Work-a-Day Thoughts, KDKA
Bob Atcher, WHAS
- 10 A.M. EDT; 9 EST; 8 CT
Breen and de Rose, WEAJ WEEI WLW
Southerners, WGY
Harvest of Song, WJZ WBZ WBAL KDKA
WSM WFLA
Home Hour, WPG, 1 h.; News at 10.30
What's On Today, WNBX
- 10.15 A.M. EDT; 9.15 EST; 8.15 CT
Clara, Lu n' Em, WEAJ WEEI WGY
WLW WSM
Holman Sisters, WJZ WBZ WHAM
Sammy Fuller, KDKA
Birthday Club, WFLA
Bill and Ginger, WABC WCAU
Clara, Lu n' Em, WGN
Matinee Melodies, WNBX
- 10.30 A.M. EDT; 9.30 EST; 8.30 CT
News and Morning Parade, WEAJ WSM, 30 m. (WEEI from 10.35) (WGY at 10.45)
Market Basket, WGY
Recordings, WEEI
Mail Bag, WLW
Today's Children, drama, WJZ WBZ WHAM
WBAL KDKA WFLA
"All About You," Harold Sherman, WABC
News, piano, WCAU WHAS
- 10.45 A.M. EDT; 9.45 EST; 8.45 CT
News, Radio Kitchen, WJZ KDKA WFLA
News, musicale, WBZ
News and Three Flats, WABC WCAU
WHAS
Daily Story, WNBX

- 11 A.M. EDT; 10 EST; 9 CT
U. S. Navy Band, WEAJ WEEI WGY WSM, 1 h.
Vocalist, WLW
The Wife Saver, WJZ WBZ WHAM
Jocle Tom and Betty, KDKA
1/4 Hour in 3/4 Time, WABC WCAU WPG
WHAS
Bruce Chalmers, baritone, WMCA
World Observer, WNBX
- 11.15 A.M. EDT; 10.15 EST; 9.15 CT
Platt and Newman, piano duo, WJZ WBZ
WHAM KDKA
News, stocks, WLW
Beale Street Boys, WABC WCAU WPG
Dolly Dean, WHAS
Town Crier, WNBX
- 11.30 A.M. EDT; 10.30 EST; 9.30 CT
International Lifeboat Race, Postmaster-Gen-eral James A. Farley, WJZ WHAM
KDKA WBAL, 30 m. (WBZ at 11.45)
Stage Show, WBZ
Charioteers, WLW
Mayfair Melodies, WABC WHAS WPG
WCAU
Morning Concert, WNBX
- 11.45 A.M. EDT; 10.45 EST; 9.45 CT
Painted Dreams, WGN WLW
The Cadets, WABC
Bud Shays, songs, WCAU
Studio program, WHAS WPG
Poem, WNBX
- 12 N. EDT; 11 A.M. EST; 10 CT
Devora Nadworney, contralto, WEAJ
Fields and Hall, WJZ WHAM KDKA WSM
WFLA
Weather, The Monitor Views the News, WBZ
Ward and Muzzy, pianists, WLW
Betty Barthell, songs, WABC WCAU WHAS
Home Sweet Home, WPG
Rod Arkell, WOR
Musical, WMCA, 30 m.
Tom, Dick and Harry, WGN
Style Talk, WNBX
- 12.15 P.M. EDT; 11.15 A.M. EST; 10.15 CT
Honeyboy and Sassafras, WEAJ WEEI
Martha and Hal, WGY
Charles Sears, tenor, WJZ WHAM KDKA
WFLA
Weather; Safety Committee, WBZ
Babs and Don, comedy team, WLW
Poetic Strings, WABC WCAU WHAS WPG
Variety, WOR
Organist, WGN
- 12.30 P.M. EDT; 11.30 A.M. EST; 10.30 CT
Merry Madcaps, WEAJ WEEI WLW, 30 m.
Hanjoleers, WGY
Vic and Sade, WJZ WBZ WHAM KDKA
WSM WFLA
Al Kavelin's Orchestra, WABC WCAU
WHAS, 30 m. (WPG at 12.45)
Louise Brabant, soprano, WGN
Scott Fisher's Orchestra, WOR, 30 m.
Stocks, WMCA
Travel Talk, WNBX
- 12.45 P.M. EDT; 11.45 A.M. EST; 10.45 CT
The Vagabonds, WGY
Words and Music, WJZ WHAM WSM
WFLA, 30 m.
88 Notes and a Pair of Pipes, WBZ
Texas trio, WLW
William Penn Orchestra, KDKA
Luncheon Musicale, WMCA, 30 m.
Musical, WGN
Nite Owls, WNBX
- 1 P.M. EDT; 12 N. EST; 11 A.M. CT
William Green, Pres. A. F. of L., WEAJ
WEEI, 45 m.
Radio Gang, WGY, 30 m.
Bob Albright, WLW
Weather, WSC Farm Forum, WBZ, 30 m.
Market Reports, KDKA
Emil Velazco Orchestra, WABC WCAU
WHAS WPG, 30 m.
Midday Service, WGN, 30 m.
N. J. Club Women, "Preventing Delin-quency," Jessie V. Condit, WOR
- 1.15 P.M. EDT; 12.15 EST; 11.15 A.M. CT
The Honorable Archie and Frank, WJZ
KDKA
River, market, live stock reports, WLW
Auditions, WFLA
Imi Burgess, WCAU
Newark Orchestra, WOR
Mirror Reflections, WMCA
- 1.30 P.M. EDT; 12.30 EST; 11.30 A.M. CT
WGY farm program, WGY, 30 m.
National Farm and Home Hour, WJZ WBZ
WHAM KDKA WBAL WLW WSM
WFLA, 1 h.
Labor Day Parade, WABC WCAU WHAS
WPG, 1 h.
Theatre Club of the Air, WOR
Manhattans, quartet, WMCA
Markets, Palmer House Ensemble, WGN,
30 m.
Helen and Bob, WNBX
- 1.45 P.M. EDT; 12.45 EST; 11.45 A.M. CT
Rex Battle's Ensemble, WEAJ WEEI
Verna Osborne, contralto, WOR
Sports, WMCA
Farm Reporter, WNBX
- 2 P.M. EDT; 1 EST; 12 N. CT
Revolving Stage, WEAJ, 45 m. (WEEI,
15 m.)
Lauren Bell, baritone, WGY
Weather, markets, WHAS
Catherine Curtis, "Women and Money,"
WMCA
Jesse Crawford, organ, WGN
- 2.15 P.M. EDT; 1.15 EST; 12.15 CT
N. E. Kitchen, WEEI
Household Chat, WGY
Georgia Wildcats, WHAS
Frank Ricciardi, baritone, WOR
Matinee Musicale, WMCA
Romance of Helen Trent, WGN
- 2.30 P.M. EDT; 1.30 EST; 12.30 CT
Albany on Parade, WGY
Home, Sweet Home, WJZ
Cooking School, WBZ, 30 m.
Home Forum, KDKA, 30 m.
Gene Burchell's Orchestra, WLW
Markets, WSM
Jones Beach Water Carnival, WABC WPG,
30 m. (WHAS, 15 m.)
Baseball, 2 games, Detroit vs. Chicago,
WGN, 3 h., 15 m.
Texas Cowboys, WMCA, 30 m.
Martha Deane, WOR, 30 m.

Typical Boy



BURGESS MEREDITH, who comes from the Broadway show, "She Loves Me Not," to make his radio debut in the title role of "RED DAVIS" when that dramatic adventure series begins on Monday, October 1 at 7.30 P. M. over the NBC-WJZ network.

- Christine Bidge, WHAS
Weather and Three Aces, WPG
Robert Reud, "Town Talk," WOR
Sally's Party, WMCA
Farm Flashes, WNBX
- 5.45 P.M. EDT; 4.45 EST; 3.45 CT
The Oleanders, WEAJ WSM
Piano, WEEI
Bradley Kincaid, mountain songs, WGY
Little Orphan Annie, WJZ WBZ KDKA
WFLA
The Texans, WLW
Gordon, Dave and Bunny, WABC WCAU
WHAS
Chats with the Weather Man, WPG
Dancing Lesson, WOR
Musical talk, WMCA
Chicago Symphony Orchestra, WGN, 45 m.
Corn Huskers, WNBX
- 6 P.M. EDT; 5 EST; 4 CT
Resume National Tennis Championship,
WEAJ WLW WSM WFLA
Evening Tattler, WEEI, 30 m.
Three X Sisters, WJZ WBZ
Dan and Sylvia, KDKA
Evening Brevities, WGY
Buck Rogers, WABC WCAU WHAS
String Music, WSM
Uncle Don, WOR, 30 m.
Bob Fallon's music, WMCA, 30 m.
Clarence Jackson, WNBX
- 6.15 P.M. EDT; 5.15 EST; 4.15 CT
Al Pearce's Gang, WEAJ WLW WSM
WFLA
Joe and Eddie, WGY
U. S. Army Band, WJZ WHAM WSM,
30 m. (news at 6.40)
Bill Williams, WBZ
Sports, KDKA
Bobby Benson and Sunny Jim, WABC
WCAU
Organ, WHAS, 30 m.
- 6.30 P.M. EDT; 5.30 EST; 4.30 CT
News and Charlie Davis' Orchestra, WEAJ
Scores, Current Events, WEEI
News, scores, WGY
String Ensemble, WSM
Jack Armstrong, WLW
Comedy Stars, KDKA
Time, weather, WBZ
News and Charles Barnett's music, WABC
WCAU
Gabriel Heatter, commentator, WOR
Screen Revue, WMCA
Singing Lady, WGN
Sports, WNBX
- 6.45 P.M. EDT; 5.45 EST; 4.45 CT
Billy Batchelor, Raymond Knight, WEAJ
WEEI WGY
Lowell Thomas, WJZ WBZ WLW KDKA
WFLA
Little Orphan Annie, WSM WGN
Dixie Circus, WABC, 30 m.
Melody Moments, WOR
Variety, WOR
Sports, WMCA
Recordings, WNBX
- 7 P.M. EDT; 6 EST; 5 CT
Baseball Resume, WEAJ
The Bye Family, WEEI
Jules Lande, violinist, WGY
Freddie Martin's Orchestra, WJZ WBAL
WFLA
Handsome Waiter, WBZ
Music, news, drama, KDKA
Virginia Marucci's Orchestra, WLW
Nick Lucas, WABC
Sundown Serenade, WHAS
Ford Frick, sports, WOR
Gloria Grattan, actress, WMCA
Orchestra, WGN
- 7.15 P.M. EDT; 6.15 EST; 5.15 CT
Gene and Glenn, WEAJ WEEI WGY WFLA
Mario Cozzi, baritone, WJZ
Drama, news, WBZ
Merry-Makers, KDKA
Joe Emerson's Orchestra, WLW
William Green, WABC
Club Program, WHAS
"Labor's Message," WOR
Ensemble, WMCA
Pianos, songs, WMCA
Palmer House Ensemble, WGN
Recordings, WNBX
- 7.30 P.M. EDT; 6.30 EST; 5.30 CT
Arlene Jackson, contralto, WEAJ WGY
After Dinner Revue, WEEI, 30 m.
Thornton W. Burgess, WBZ
Nancy Martin, KDKA
Bob Newhall, WLW
Jack Shook and Marjorie Cooney, WSM
Garden of Melody, WFLA
Paul Keast and Rollo Hudson's Orchestra,
WABC WCAU
Buck Rogers, WHAS
Sports reporter, WGN
The O'Neills, WOR
Heat Waves, WMCA
- 7.45 P.M. EDT; 6.45 EST; 5.45 CT
Sisters of the Skillet, WEAJ WGY WSM
Frank Buck, WJZ WBZ WBAL WHAM
KDKA WFLA
Al and Pete, WLW
Jack Shook, WSM
Boake Carter, news, WABC WCAU WHAS
1/4 Hour in 3/4 Time, WOR
A. Cloyd Gill, news commentator, WMCA
World's Fair Reporter, WGN
- 8 P.M. EDT; 7 EST; 6 CT
Champions, Joey Nash, Richard Himber's
Orchestra, WEAJ WEEI WGY, 30 m.
Jan Garber's Orchestra, WJZ WBZ WHAM
KDKA WLW, 30 m.
Nap and Dec, WSM
Dance Tunes, WOR, 30 m.
Kate Smith, WABC WCAU WHAS
Hal Kemp's Orchestra, WGN
Irish Melodies, WPG
Three Little Funsters, WMCA
- 8.15 P.M. EDT; 7.15 EST; 6.15 CT
Baseball Scores, WSM
Leah Colbert, WFLA
Edwin C. Hill, "The Human Side of the
News," WABC WHAS
Something Old—Something New, WCAU
Bridge Talk, WPG
5-Star Final, WMCA
Palmer House Ensemble, WGN
- 8.30 P.M. EDT; 7.30 EST; 6.30 CT
William Daly's Orchestra, Gladys Swarth-out, mezzo-soprano, WEAJ WEEI WGY
WLW, 30 m.
King's Guard quartet, Bernard Levitow's Or-chestra, WHAM KDKA WSM WFLA
"Win-a-City Revue," WABC, 30 m.
"Waffles," "The Adventures of the Black
Opal," WPG
Sinfonietta, WOR, 30 m.
Lone Ranger, WGN, 30 m.
U. S. Navy Band, WMCA, 1 h.
- 8.45 P.M. EDT; 7.45 EST; 6.45 CT
Broadcast from the Seth Parker, WJZ
WBZ WHAM WSM KDKA WFLA
Harold Stephens, tenor, WPG
- 9 P.M. EDT; 8 EST; 7 CT
A&P Gypsies, Frank Parker, tenor, WEAJ
WEEI WGY, 30 m.
Minstrels, Gene Arnold, Joe Parsons, male
Quartet, WJZ WBZ WHAM WBAL WLW
KDKA WSM WFLA, 30 m.

- Evan Evans, WABC WCAU WPG WHAS
Frank Stuart's Music, WOR, 30 m.
WGN Orchestra, WGN
- 9.15 P.M. EDT; 8.15 EST; 7.15 CT
Roy Helton, "Looking At Life," WABC
WPG WCAU WHAS
- 9.30 P.M. EDT; 8.30 EST; 7.30 CT
House Party, Joe Cook, Donald Novis,
Frances Langford, WEAJ WEEI WGY
WLW WSM WFLA, 30 m.
Dramatic Sketch, "In the Night," WJZ
KDKA WHAM WBAL, 30 m.
Henrietta Schumann and Lud Gluskin's Or-chestra, Georgie Price, WABC WCAU
WHAS, 30 m.
Hotel Traymore Orchestra, WPG, 30 m.
Arthur Wright, tenor, WGN
1/4 Hour in 3/4 Time, WOR, 30 m.
Floyd Mills' music, WMCA
Hotel Traymore Orchestra, WPG, 30 m.
- 9.45 P.M. EDT; 8.45 EST; 7.45 CT
Johnny Hamp's Orchestra, WGN
Piano, WGN
- 10 P.M. EDT; 9 EST; 8 CT
Gene Arnold, Lullaby Lady, male quartet,
Eastman's Orchestra, WEAJ WEEI WGY
WLW, 30 m.
NBC Concert Orchestra, WJZ WBZ WHAM
KDKA WFLA, 30 m.
Wayne King's Orchestra, WABC WCAU
WHAS, 30 m.
Linette Grubler, songs, WPG
John Kelvin, tenor, WOR
Dance Tunes, WMCA, 3 hrs.
News, music, WGN, 1 h.
- 10.15 P.M. EDT; 9.15 EST; 8.15 CT
Mary Cortner, soprano, WSM
Rhythm Casino, WPG
Current Events, WOR
- 10.30 P.M. EDT; 9.30 EST; 8.30 CT
Gothic Choristers, WEAJ WSM, 30 m.
(WEEI at 10.45)
The Colonials, WGY, 30 m.
Henry Thies Pepsters, WLW
Hazel Arth, contralto, WJZ WBZ WSM
"The Care and Feeding of Hobby Horses,"
WABC, 30 m.
Jan Savitt's Orchestra, WCAU
Steel Pier Dance Tunes, WPG, 30 m.
"Spotlight," WOR, 30 m.
Henry Thies Pepsters, WLW, 30 m.
Charles Barnett's Orchestra, WMCA, 30 m.
- 10.45 P.M. EDT; 9.45 EST; 8.45 CT
Democratic Republican Series, WJZ WBZ
WBAL KDKA WFLA WSM
Franklin Bens, tenor, WLW
- 11 P.M. EDT; 10 EST; 9 CT
Harold Stern's music, WEAJ WGY WFLA,
30 m. (WEEI at 11.15)
E. B. Rideout and scores, current events,
WEEI
Ray Nichols' Orchestra, WGY, 30 m.
Don Bestor's music, WJZ WHAM, 30 m.
(WBZ KDKA at 11.15)
Weather, time, "Song Painter," WBZ
Sports, KDKA
Cousin Bob, Hill Billy, WLW, 30 m.
"Fats" Waller, songs, WABC WPG WHAS
Weather, Dance Orchestra, WOR, 30 m.
Friedman's Orchestra, WMCA
June Provines, WGN
- 11.15 P.M. EDT; 10.15 EST; 9.15 CT
Gene and Glenn, WSM
Casa Loma Orchestra, WABC WPG WCAU,
30 m. (WHAS at 11.30)
Sam, Gil and Louie, WHAS
Udo's Tango Orchestra, WMCA
Lum and Abner, WGN
- 11.30 P.M. EDT; 10.30 EST; 9.30 CT
Carl Hoff's Orchestra, WEAJ WEEI, 30 m.
Marshall Van Pool's Orchestra, WGY,
30 m.
Follies, WLW, 30 m.
Shen Fields music, WJZ WBZ KDKA,
30 m.
Antonia Lopez, WFLA
Eddie Lane's Orchestra, WOR, 30 m.
Hal Kemp's Orchestra, WGN
- 11.45 P.M. EDT; 10.45 EST; 9.45 CT
Enoch Light's Orchestra, WABC WCAU WPG
Organ, WHAS
Hal Kemp's and Ted Weems' Orchestra,
WGN, 30 m.
- 12 M. EDT; 11 P.M. EST; 10 CT
Ralph Kirberry, baritone, Johnny Johnson's
music, WEAJ WEEI WLW, 30 m.
Guy Lombardo's music, WJZ WBZ WHAM
KDKA WBAL, 30 m.
Blue Monday Jamboree, WABC WCAU WPG
WHAS, 30 m.
Charles Barnett's music, WOR
Day's End, WMCA, 30 m.
- 12.15 A.M. EDT; 11.15 P.M. EST; 10.15 CT
Earl Burnett's Orchestra, WGN
- 12.30 A.M. EDT; 11.30 P.M. EST; 10.30 CT
George Hessberger's Bavarian Band, WEAJ
WEEI WGY, 30 m.
Paul Pendarvis' Orchestra, WJZ WBZ
WHAM KDKA WLW, 30 m.
Jimmy Gallagher's music, WSM, 30 m.
Leon Belasco's Orchestra, WABC WPG
WHAS, 30 m.
Benny Goodman's music, WMCA
Bob Pacelli's Orchestra, WGN

Round-the-World Program

A dance program from the four corners of the earth will be relayed by short and long wave to WABC-Columbia network listeners at 8.00 P.M., Saturday, September 8. By arrangement with RCA Communications synopated rhythms from London, Buenos Aires and Honolulu will share the half-hour with the music of four outstanding American dance bands.

Robison And His Buckaroos Began Their Careers In English Tour

Carson Is A Collector of Range Songs

At the microphone the thrilling Bar X Days and Nights series, featuring CARSON ROBISON and His Buckaroos, consisting of PEARL PICKENS and JOHN and BILL MITCHELL, with a cast of veteran radio actors, in songs and drama is typical of, as it is phrased, the wild and woolly West.

CARSON ROBISON, son of the Kansas prairies, is a king pin among authorities of folk songs of the old West, commonly designated as cowboy songs. His music library contains more than 500 such compositions, plus a sprinkling of hill-billy tunes, and among them are approximately 150 works from his own pen.

From his library, he selects the musical numbers for each Bar X Days and Nights broadcast. He constantly is searching for other old and authentic songs of the Western range. Each discovery is added to his library. Each discovery of merit becomes potential radio material.

The Bar X Days and Nights program is equally balanced with Western drama and music. Some of the dramatic narratives are woven around a song, especially the old story song, and some of the musical programs are selected as appropriate for a particular dramatic story.

Western Drama

As an example, "Lay Down Dogies," from CARSON's pen, is a Western story song around which has been woven a typical Bar X Days and Nights dramatic narrative.

It is the song story of a young man and his wife who migrated from the East to the West and settled on a ranch. The man subsequently was shot and paralyzed by a rustler, after which his comely wife managed the ranch and rode the range.

During the long nights she sang constantly, after the manner of the cowboy, to keep the range cattle quiet. Otherwise, the howls of coyotes or wolves, the clapping of thunder or the flash of lightning, or even the sharp report of a pistol shot may have caused them to stampede. The song outlines the story in skeleton form; the dramatic narrative based on it is embellished.

The narratives built around old story songs are usually fictional, while the other Bar X Days and Nights dramatic narratives, around which the musical programs are built, are either fictional or factual. Some of them are based on historical occurrences, as authenticated by research, and the others are brain children of their author. He is FINIS FARR, veteran radio continuity-writer.

CARSON ROBISON, for one thing, is scrupulously attentive to the dates at which songs were popular, in choosing them to illustrate any given dramatic sketch. If the drama is laid in the Nineties, he will not use a song of any other period to illustrate it.

Each song chosen will be taken from the collection of those which were popular in the Nineties. Each musical composition in his library contains the date when it was written, if ascertainable; the date when it was popu-

"Home, Home On The Range"—And Dressed For It



CARSON ROBISON and His Buckaroos—Left to right: CARSON ROBISON, PEARL PICKENS, JOHN MITCHELL and WILLIAM MITCHELL.

lar, and the dates, if more than once, when it was published. These latter dates are useful in checking copyrights.

Plays Own Compositions

CARSON ROBISON retains for the exclusive use of himself and the Buckaroos some of his own compositions. They never have been published. Among such compositions are "Texas Dan" and "Texas Home," two typical cowboy songs; "Oklahoma Charlie," and "Jed Turney's Gal," two story songs, and "Long, Long Way From Home," the theme song of the Bar X Days and Nights series.

CARSON wrote the last number just a short while before the premiere performance of the Bar X Days and Nights program. It represents his sentiment while witnessing a rodeo performance in the Madison Square Garden, New York.

CARSON organized his Buckaroos in February, 1932. He was obsessed with the idea that a good vocal quartet, including members who could play instrumental accompaniments, could make a hit in England as singers of Western songs.

The Buckaroos Begin

In April, 1932, after two months of rehearsing with the Buckaroos, they boarded an ocean liner for England, and soon thereafter were starred in several of England's fashionable music halls and hotels. Among the latter were the Hotel Berkeley, the Hotel Savoy and the Hotel Claridge. They also made some 80 records of cowboy songs. "I Was Born in Wyoming," "Going to the Barn Dance Tonight," and "Home on the Range," were their most popular English recordings.

CARSON and His Buckaroos stayed in England until the Fall of 1932, and the next Spring they began presenting the Bar X Days and Nights program. It first was broadcast over the WABC-Columbia network as a sustaining program, but after a few months was switched to another network as

a commercial program. During July, 1934, the program was reinstated on the WABC-Columbia network, this time as a sponsored production.

The Program

On the stroke of 9 P. M., EDST, each Thursday, CARSON and His Buckaroos crowd around a microphone in the Columbia studios in New York and sound off their theme song. CARSON himself wears a harmonica suspended from a contraption hooked over his head, and has both a Jew's-harp and guitar at his finger tips. He plays each instrument, in addition to the piano, and sings and whistles.

PEARL PICKENS and JOHN and BILL MITCHELL huddle around the microphone with their leader. Both JOHN and BILL, in addition to singing, play banjos, the Jew's harp and the harmonica, while PEARL relies entirely upon her rich contralto voice. She once studied for an operatic career in Europe.

CARSON was born in Chetopa, Kansas, and early learned many of the old Western songs. His father, once named the champion

cowboy fiddler of Kansas, was his tutor. When only 12, CARSON wrote his first song—a church hymn. During his youth he ran away from home and rode the range in both Kansas and Oklahoma.

A Real Westerner

The love of the soil and ranch life today is CARSON's most distinctive characteristic as a member of radioland. In preference to living in a fashionable Park Avenue penthouse, he owns and resides on a 144-acre farm near Poughkeepsie, in Pleasant Valley, New York. The farm now is stocked with about 20 cows, two riding ponies, about 500 chickens—and a couple of tractors.

CARSON lives in a rambling farmhouse which faces an artificial pond, and stands to the rear of the house. Each Fall he entertains at a barn dance for radio associates and his country neighbors.

His city friends always come dressed in outlandish farm costumes—and his country friends in formal attire.

Roxy's Show Will Present Ear Pictures

When ROXY and his gang come back to the air again over the WABC network beginning September 15 at 8.45 P. M. he will experiment with what he calls "ear pictures."

The new "Roxy Revue" will include a large concert orchestra, a mixed chorus, a male quartet and a dramatic cast. In addition guest soloists will appear on each program. Many of the guests are new to the air, results of extensive auditioning which ROXY has been carrying on for some time.

The "ear pictures" will be in the form of a new combined musical and dramatic technique. They will be musical presentations which, with the complements of sound effects and dialogue, will stimulate the listeners to form mental pictures similar to those created by elaborate scenic effects on a visible stage.

Easy informality and pleasant intimacy will be the keynote of the programs.

"There is too much emphasis on split-second timing in many radio programs," says ROXY. "we will try to get away from clock-consciousness and achieve more of the spontaneity which characterized the early days of broadcasting."

Mrs. Roosevelt Back on the Air

Mrs. FRANKLIN D. ROOSEVELT will return to the air over the NBC-WJZ network on Tuesday, September 4, at 9.30 P. M.

The First Lady comes back to the microphone for a series of four broadcasts. She will be heard every Tuesday in September in a half-hour program in which she will share time with an orchestra.

Storybook Enemies Will Greet Oysters Over NBC

The WALRUS and the CARPENTER, those well known connoisseurs of the succulent bivalve, will informally welcome oysters back into circulation on Saturday, September 1, the first day of the first "R" month.

The program entitled "Oysters 'R' in Season," will be heard over an NBC-WJZ network at 4.15 P. M.

The debut of the younger set of the Lynnhaven, Blue Point and other well known families of Cape Cod and Chesapeake Bay will be broadcast from the NBC studios at Radio City. Those who prefer to do so will appear before the microphone in a cocktail, while others will affect a simple decolette a la half shell.

In presenting them, the WALRUS will explain to the CARPEN-

TER some of the eccentricities of the young shellbacks, and music by the NBC orchestra will drown their tears as they contemplate the nine "R" months in which they will be in the limelight.

A cast of well known NBC players and singers in holiday mood will portray the tribulations of the oysters in humorous sketches and topical songs dealing with the opening of the season. The program is written and arranged by FRANCIS WILSON, NBC staff writer.

Tuesday, September 4 - Mrs. Roosevelt on NBC-WJZ, 9.30 P.M.

Highlights

- P.M.**
- 4.00—Three Choirs Festival from Gloucester, England, CBS-WABC
 - 8.30—"Melodiana," Abe Lyman, Vivienne Segal, Oliver Smith, CBS-WABC
 - 9.00—American Banking Institute, NBC-WEAF
 - 9.30—Soconyland Sketches, NBC-WEAF
 - Mrs. F. D. Roosevelt, NBC-WJZ
 - Parade of the Champions, CBS-WABC
 - 10.00—The Silver Candlestick, NBC-WJZ

(All programs are listed in Eastern Daylight Saving Time, Eastern Standard Time is one hour earlier; Central Time is two hours earlier.)

- 9.15 A.M. EDT; 8.15 EST; 7.15 CT
- Don Hall Trio, WEAF WEEI WGY WLW in a Spanish Garden, WABC WCAU, 30 m.
- 9.30 A.M. EDT; 8.30 EST; 7.30 CT
- Eva Taylor, songs, WEAF
- Jean Abbey, WEEI
- Little Jack Little's Orchestra, WGY
- Joe Emerson, hymns, WLW
- Bob Atcher, WHAS
- 9.45 A.M. EDT; 8.45 EST; 7.45 CT
- Wife Saver, WEAF WEEI WGY WLW (News, WEEI, 5 m.)
- Plough Boys, KDKA
- Round Towners Quartet, WABC WCAU WSM
- Dave Tyson, songs, WPG
- 10.0 A.M. EDT; 9.00 EST; 8.00 CT
- Breen and de Rose, WEAF WEEI Southerners, WGY
- Edward MacHugh, Gospel Singer, WJZ WBZ KDKA WSM WFLA
- Organ, WLW
- Bill and Ginger, WABC WCAU WHAS
- Home Hour, WPG, 1 h. (news at 10.30)
- What's on Today, WNBX
- 10.15 A.M. EDT; 9.15 EST; 8.15 CT
- Clara, Lu 'n' Em, WEAF WEEI WGY WLW WSM
- Castles of Romance, WJZ WBZ KDKA
- Hazel Slusser, Fred King, WFLA
- Crane Calder, bass, WABC WCAU
- Poet's Corner, WMCA
- Clara, Lu 'n' Em, WGN
- 10.30 A.M. EDT; 9.30 EST; 8.30 CT
- News and Morning Parade, WEAF WSM, 1 h. (WEEI, 15 m. and from 11.15) (WGY at 10.45 and 11.15)
- Shopping Bag, WGY
- Today's Children, WJZ WBZ WHAM WBAL KDKA WFLA
- Mailbag, WLW
- News and Madison Ensemble, WABC WCAU WHAS, 30 m.
- 10.45 A.M. EDT; 9.45 EST; 8.45 CT
- Good Morning Melodies, WEEI
- Shopping Bag, WGY
- News and Radio Kitchen, WJZ WSM WFLA KDKA
- News, musicale, WBZ
- Baritone, WLW
- Bob Atcher, WHAS
- Story, WNBX
- 11 A.M. EDT; 10 EST; 9 CT
- Edison Friendly Kitchen Program, WEEI
- Galaxy of Stars, WGY WTAM WLW
- Honey-mooners, WJZ KDKA WSM WFLA
- Duke Dewey's Orchestra, WBZ
- U. S. Navy Band, WABC WCAU WPG WHAS, 30 m.
- Devotional Hour, WNBX
- 11.15 A.M. EDT; 10.15 EST; 9.15 CT
- Platt and Nierman, pianists, WJZ WBZ WHAM KDKA
- News, livestock, WLW
- Leon Cole, organist, WSM
- Charm Secrets, WCAU
- Town Crier, WNBX
- 11.30 A.M. EDT; 10.30 EST; 9.30 CT
- Three Shades of Blue, WEAF WEEI WGY Melody Mixers, WJZ KDKA WSM WFLA, 30 m.
- E. R. A. Orchestra, WBZ, 30 m.
- Charioteers, WLW
- Do Re Mi Trio, WABC WPG WHAS
- Pete Woolery's Orchestra, WCAU
- Morning Concert, WNBX
- 11.45 A.M. EDT; 10.45 EST; 9.45 CT
- Painted Dreams, WLW
- Melody Parade, WABC WCAU
- News, WNBX
- 12 N. EDT; 11 A.M. EST; 10 CT
- Fields and Hall, pianists, WJZ KDKA WHAM WBAL WSM WFLA
- Weather, The Monitor Views the News, WBZ
- Connie Gates, WABC WCAU WHAS
- Home Sweet Home, WPG
- Danny Dee, WOR
- Luncheon Music, WMCA, 30 m.
- Lawrence Salerno, WGN
- Parents' Forum, WNBX
- 12.15 P.M. EDT; 11.15 A.M. EST; 10.15 CT
- Honeyboy and Sassafras, WEAF WEEI
- Martha and Hal, WGY
- Merry Macs, WJZ KDKA WSM WFLA WSM WFLA
- Time, weather, safety committee, WBZ
- Babs and Don, WLW
- Concert Orientale, WABC WCAU WHAS WPG
- Doring Sisters, WGN
- Ensemble, WOR
- Victor Herbert melodies, WNBX
- 12.30 P.M. EDT; 11.30 A.M. EST; 10.30 CT
- Merry Madcaps, WEAF WGY WLW, 30 m.
- Stocks, produce, WEEI
- Vic and Sade, WJZ WBZ KDKA WHAM WFLA

Summerish



ELAINE MELCHOIR, radio actress, who plays the part of ARDALA in the BUCK ROGERS series when it returns to the air this fall. She is dressed for late Summer tennis.

- 3.15 P.M. EDT; 2.15 EST; 1.15 CT
- Rainbow Court, WLW
- Congress of Clubs, KDKA
- Beauty talk, WOR
- Trudy Thomas, WMCA
- 3.30 P.M. EDT; 2.30 EST; 1.30 CT
- Woman's Radio Review, "Creole Gumbo and its Songs," Edward Laroque Tinker, author, WEAF WGY, 30 m.
- WEEI Reading Circle, WEEI, 30 m.
- Joseph Gallier's Orchestra, Sylvia Clark, comedienne, WJZ KDKA WSM, 30 m.
- Advertising with Postage Stamps, WBZ, 30 m.
- "Bond of Friendship," organ, WLW
- Dancing by the Sea, WABC WPG WHAS, WCAU, 30 m.
- Frank Ricciardi, baritone, WOR, 30 m.
- Sports Review, concert artists, WMCA, 2 h.
- Bob Forsans, tenor, WGN
- Concert, WNBX
- 3.45 P.M. EDT; 2.45 EST; 1.45 CT
- Don Rogers, baritone, WBZ
- Dorothea Ponce, songs, WLW
- Musical, WGN, 2 h.
- 4 P.M. EDT; 3 P.M. EST; 2 CT
- Johnny Johnson's Orchestra, WEAF, 30 m. (WEEI at 4.15)
- Stocks, WEEI
- Orchestra, WGY, 30 m.
- Betty and Bob, drama, WJZ WBZ WHAM
- Three Choirs Festival from Gloucester, England, WABC WHAS, 1 h. (WPG, 50 m. at 4.30)
- The Apple Knockers, WCAU
- Tea Time Topics, WPG, 30 m.
- Dr. H. I. Steinhilgen, WOR
- Concert, WNBX
- 4.15 P.M. EDT; 3.15 EST; 2.15 CT
- The Singing Stranger, WJZ WBZ WHAM KDKA WFLA
- Music by Divano, WLW
- Larry Roberts, tenor, WOR
- Gladys Grant, WNBX
- 4.30 P.M. EDT; 3.30 EST; 2.30 CT
- Jesters, WEAF
- Chicago Symphony Orchestra, WJZ WHAM WSM WFLA, 1 h. (KDKA, 30 m. from 4.45) (WBZ, 30 m.)
- Market Reports, KDKA
- Life of Mary Sothorn, WLW
- Carlton and Craig, WCAU
- Josef Zatur's Orchestra, WOR, 30 m.
- 4.45 P.M. EDT; 3.45 EST; 2.45 CT
- Adventures On Mystery Island, WEAF WEEI
- Stocks, WGY
- Business News, WLW

- Ship Ahoj, WCAU
- Old Time songs, WNBX
- 5 P.M. EDT; 4 EST; 3 CT
- Blue Room Echoes, WEAF WEEI WLW, 30 m. (WGY at 5.15)
- Three Schoolmasks, Billy Rose, WGY
- The Monitor Views the News, WBZ
- Homemakers' Club, WFLA, 30 m.
- Jerry Cooper, baritone, WABC WHAS
- Stocks, WPG
- Variety, WOR
- Marvels, WNBX
- 5.15 P.M. EDT; 4.15 EST; 3.15 CT
- Elmo Calkins, "Leisure," WJZ
- Beatrice Henderson, WBZ
- KDKA Kiddies' Klub, KDKA
- The Playboys, WABC WCAU WPG
- Weekday Devotions, WHAS
- Marjorie Harris, contralto, piano duo, WOR
- 5.30 P.M. EDT; 4.30 EST; 3.30 CT
- The Tattered Man, WEAF WEEI WGY WSM WFLA
- Singing Lady, WJZ WBZ WHAM KDKA WBAL WLW
- Jack Armstrong, "All-American Boy," WABC WCAU
- Weather, Nan and Camille, WPG
- Christine Ridge, WHAS
- 113th Infantry Band, WOR, 30 m.
- 113th Infantry Band, weather, WOR, 30 m.
- Sally's Party, WMCA, 30 m.
- Miss Lula B. Coleman, WNBX
- 5.45 P.M. EDT; 4.45 EST; 3.45 CT
- Nursery Rhymes, WEAF WEEI WFLA
- Billy Rose, tenor, WGY
- Orphan Annie, WJZ WBZ KDKA
- The Texans, WLW
- Summary of National tennis match play, WABC WCAU WHAS WPG
- Chicago Symphony Orchestra, WGN, 45 m.
- Farm Flashes, WNBX
- 6 P.M. EDT; 5 EST; 4 CT
- National tennis championships summarized, WEAF WLW WSM, 30 m. (WGY at 6.15)
- The Evening Tattler, WEEI, 30 m.
- Evening Brevities, WGY
- Dorothy Page's Orchestra, WJZ WBZ WHAM
- Dan and Sylvia, KDKA
- Cocoonets, WFLA, 30 m.
- Buck Rogers, WABC WCAU WHAS
- Uncle Don, WOR, 30 m.
- Bob Fallon's music, WMCA, 30 m.
- Smilin' Ed McConnell, W. 2.5X
- 6.15 P.M. EDT; 5.15 EST; 4.15 CT
- Harry Meyer's music, WEAF WLW WSM
- Piano, WGY
- Horatio Zito's Orchestra, WJZ WHAM
- Bill Williams, WBZ
- Baseball Talk, KDKA
- Bobby Benson and Sunny Jim, WABC WCAU
- Herbert Koch, organist, WHAS, 30 m.
- Bob Fallon's music, WMCA
- Royal Poet, WNBX
- 6.30 P.M. EDT; 5.30 EST; 4.30 CT
- News, Harry Meyer's Orchestra, WEAF WGY WSM
- Scores, news, WEEI
- Twenty Fingers of Harmony (News at 6.40), WJZ KDKA WSM
- Time, weather, WBZ
- Jack Armstrong, WLW
- News, Sam Robbins' Orchestra, WABC, 30 m.
- Ben Greenblatt, WCAU
- Gabriel Heatter, commentator, WOR
- Singing Lady, WGN
- Cowboy Tom, WMCA
- Sports, WNBX
- 6.45 P.M. EDT; 5.45 EST; 4.45 CT
- Billy Batchelor, Raymond Knight, WEAF WGY WSM
- Edison Salute, WEEI
- Lowell Thomas, WJZ WBZ WHAM KDKA WLW
- Radio Special, WFLA
- Little Orphan Annie, WGN
- Comedy Stars of Hollywood, WCAU
- Piano, WOR
- Sports, WMCA
- Recordings, WNBX
- 7 P.M. EDT; 6 EST; 5 CT
- Baseball Review, WEAF
- Gould and Sheffer, pianos, WEEI
- Variety, WGY
- Stamp Club, WJZ
- News, WBZ
- Stanley Metcalfe, tenor, news, KDKA
- Hawaiians, WLW
- Beals Street Boys, WABC WCAU
- Serenade, WHAS
- Ford Frick, sports, WOR
- Tenor, WMCA
- Orchestra, WGN
- 7.15 P.M. EDT; 6.15 EST; 5.15 CT
- Gene and Glenn, WEAF WEEI WGY
- Tintype Tenor, WJZ WHAM WBAL
- Thornton W. Burgess, WBZ
- Varieties, KDKA, 30 m.
- Bailey Axton, tenor, WLW
- Musical Memories, WFLA, 30 m.
- Wayside Cottage, WABC WCAU
- Club program, WHAS
- Comedy Stars, WOR
- Russian Group, WMCA
- Palmer House Ensemble, WGN
- Danny Malone, WEAF WGY
- After Dinner Review, WEEI
- You and Your Government, WJZ WBZ
- Bob Newhall, WLW
- Peter Biljo's Orchestra, WABC WCAU
- Buck Rogers, WHAS
- Harry Hershfield, WOR
- Jack's Girl Friends, WMCA
- Sports Reporter, WGN
- 7.45 P.M. EDT; 6.45 EST; 5.45 CT
- Sisters of the Skillet, WEAF WGY WSM
- Big Freddie Miller, WEEI WJAR WCHS
- WTAG
- Frank Buck, WJZ WBZ WHAM KDKA WFLA
- Melody Masters, WLW
- Boake Carter, WABC WCAU WHAS
- "Less, the Furnace Man," WOR
- World's Fair Reporter, WGN, 30 m.
- A. Cloyd Gill, news commentator, WMCA
- 8 P.M. EDT; 7 EST; 6 CT
- Leo Reisman's Orchestra, Phil Duesy, WEAF WEEI WGY, 30 m.
- Crime Clues drama, WJZ WBZ KDKA
- Florida Military Academy, WFLA
- "Lavender and Old Lace," Frank Munn and Muriel Wilson, Gustav Haenschen's Music, WABC WHAS, 30 m.
- Ray Ziegler, sports, WPG
- "Stageshow Revue," WOR, 30 m.
- Funsters, WMCA
- 8.15 P.M. EDT; 7.15 EST; 6.15 CT
- Beauty that Endures, WFLA
- Vita C. Park, contralto, WPG
- 5-Star Final, WMCA
- WGN Orchestra, WGN
- 8.30 P.M. EDT; 7.30 EST; 6.30 CT
- Wayne Kine's Orchestra, WEAF WEEI WGY WSM, 30 m.

- NBC Symphony Orchestra, Frank Black conducting, WJZ WBZ WHAM WBAL, 30 m.
- March Moods, WLW
- "Melodiana," with Abe Lyman's Orchestra, Vivienne Segal, Oliver Smith, tenor, WABC WCAU, 30 m.; WPG, 15 m.
- Studio program, WHAS
- Milton Kellum's Orchestra, WPG
- Roger Van Duzer's Orchestra, WOR, 30 m.
- United States Navy Band, WMCA, 1 h.
- Bob Pacelli's Orchestra, WGN
- 8.45 P.M. EDT; 7.45 EST; 6.45 CT
- Doris Dehn, soprano, WPG
- Comedy, WLW
- 9 P.M. EDT; 8 EST; 7 CT
- American Banking Institute, WEAF WGY, 30 m.
- Household Musical Memories, Edgar Guest, WJZ WBZ WHAM, 30 m.
- String Ensemble, WSM
- Soloist, WFLA, 30 m.
- George Givot, Freddie Rich's Orchestra, Edith Murray, WABC WCAU WHAS, 30 m.
- Soprano, WPG
- Dave Vine, comedian, WOR, 30 m.
- Johnny Hamp's Orchestra, WGN
- 9.15 P.M. EDT; 8.15 EST; 7.15 CT
- Jimmy Gallagher's Orchestra, WSM
- Mardi Gras, WGN, 30 m.
- 9.30 P.M. EDT; 8.30 EST; 7.30 CT
- Soconyland Sketches, Arthur Allen, Parker Fennelly, WEAF WEEI WFLA WGY, 30 m.
- Mrs. F. D. Roosevelt, Willard Robinson's music, WJZ WBZ WHAM KDKA, 30 m.
- Music, variety, WLW, 30 m.
- Parade of the Champions, Richard Himmer's Orchestra, WABC WCAU, 30 m.
- Friendship Voice, WHAS
- Traymore Concert Orchestra, WPG, 30 m.
- Variety Show, WMCA, 30 m.
- 9.45 P.M. EDT; 8.45 EST; 7.45 CT
- Violinist, WSM
- Sanders Sisters, WHAS
- Violin, WOR, 30 m.
- Ted Weems' Orchestra, WGN
- 10 P.M. EDT; 9 EST; 8 CT
- John Barclay, Frank McIntyre, Gladys Swarthout, operetta, WEAF WEEI WGY WLW WSM WFLA, 1 h.
- The Silver Candlestick, WJZ, 30 m.
- Fray and Braggiotti, WABC WHAS WPG
- Bob Fallon's music, WMCA
- News, WGN
- 10.15 P.M. EDT; 9.15 EST; 8.15 CT
- Troopers, WABC WCAU WPG WHAS
- Current Events, WOR
- Jerry Arlen's music, WMCA
- Dream Ship, WGN
- 10.30 P.M. EDT; 9.30 EST; 8.30 CT
- Tim Ryan's Rendezvous, WJZ WBZ, 30 m.
- Squire Hawkins, KDKA
- Melodic Strings, WABC WCAU WPG WHAS, 30 m.
- Eddie Lane's Orchestra, WOR, 30 m.
- Chicago Theatre of the Air, WGN, 30 m.
- 10.45 P.M. EDT; 9.45 EST; 8.45 CT
- Kelly Sisters, KDKA
- 11 P.M. EDT; 10 EST; 9 CT
- "QST," dramatic sketch, WEAF WFLA
- Weather, baseball scores and current events, WEEI
- Orchestra, WGY, 30 m.
- George Steney's Orchestra, W. 2. WHAM
- Weather, "Song Painter," WBZ
- Sports, KDKA
- Cotton Queen Minstrels, Hink and Dink, WLW, 30 m.
- Frank Buck, WSM
- Party Issues, WABC
- Allan Scott, WCAU
- Herbert Koch, organist, WHAS
- Seashore Hotel Guide, WPG
- Weather, Paul Whiteman's music, WOR, 30 m.
- Leon Friedman's music, WMCA
- June Provines, WGN
- 11.15 P.M. EDT; 10.15 EST; 9.15 CT
- Jack Berger's Orchestra, WEAF WEEI WFLA
- Robert Royce, tenor, WJZ WBZ WHAM KDKA
- Gene and Glenn, WSM
- Isham Jones Orchestra, WABC WPG WHAS WCAU, 30 m.
- Musical Variety, WHAS
- Tango Orchestra, WMCA
- Lum and Abner, WGN
- 11.30 P.M. EDT; 10.30 EST; 9.30 CT
- Carl Hoff and Orchestra, WEAF WEEI, WFLA, 30 m.
- Rud Nichols Orchestra, WGY, 30 m.
- Ray Vallee's Music, WJZ WBZ, 30 m.
- William Penn Orchestra, KDKA, 30 m.
- El Dantzig's Orchestra, WOR, 30 m.
- Blue Rhythm Band, WMCA, 30 m.
- Wayne King's Orchestra, WGN
- 11.45 P.M. EDT; 10.45 EST; 9.45 CT
- Joe Reichman's Orchestra, WABC WCAU WHAS WPG
- Jan Garber's Orchestra, WGN, 30 m.
- 12 M. EDT; 11 P.M. EST; 10 CT
- Enric Madriguera's Orchestra, WEAF WEEI WGY, 30 m.
- Gus Arnheim's music, WJZ WBZ KDKA WHAM WLW WFLA
- Harry Sosnick's music, WABC WCAU WPG WHAS, 30 m.
- Jack Shook, guitar, WSM
- The Wandering Poet, WPG, 30 m.
- Frank Stuart's music, WOR
- Day's End, WMCA, 30 m.
- 12.15 A.M. EDT; 11.15 P.M. EST; 10.15 CT
- Ted Weems' Orchestra, WGN
- 12.30 A.M. EDT; 11.30 P.M. EST; 10.30 CT
- Harold Stern's Orchestra, WEAF WEEI WGY WEEI WFLA, 30 m.
- Charlie Gray's Orchestra, WJZ WBZ WHAM KDKA, 30 m.
- Mel Snyder's Orchestra, WLW, 30 m.
- Jimmy Gallagher's Orchestra, WSM
- Frank Dailey's music, WABC, 30 m.
- Benny Goodman's music, WMCA
- Steel Pier music, WPG
- Johnny Hamp's Orchestra, WGN
- 12.45 A.M. EDT; 11.45 P.M. EST; 10.45 CT
- Pete Smythe's Orchestra, WJZ WBZ WHAM KDKA
- 1 A.M. EDT; 12 M. EST; 11 P.M. CT
- Terrace Gardens music, WSM, 30 m.
- Charles Barnet's Orchestra, WABC, 30 m.
- Coney Island music, WLW, 30 m.
- Art Landry's Orchestra, WMCA
- Bob Pacelli's Orchestra, WGN

Just To Make Sure

AND NOW, MAY I ASK YOUR NAME?



GEORGE B. STORER, president of the American Broadcasting System, was taking a party of guests through WMCA in New York. They stopped in the control room to hear a speech by AL SMITH. Asking the operator on duty his name, Mr. STORER introduced his guests to LEE GARDNER. When introductions were over, GARDNER, wary of gate-crashers, turned to his boss. "And now," he said, "may I ask your name?"

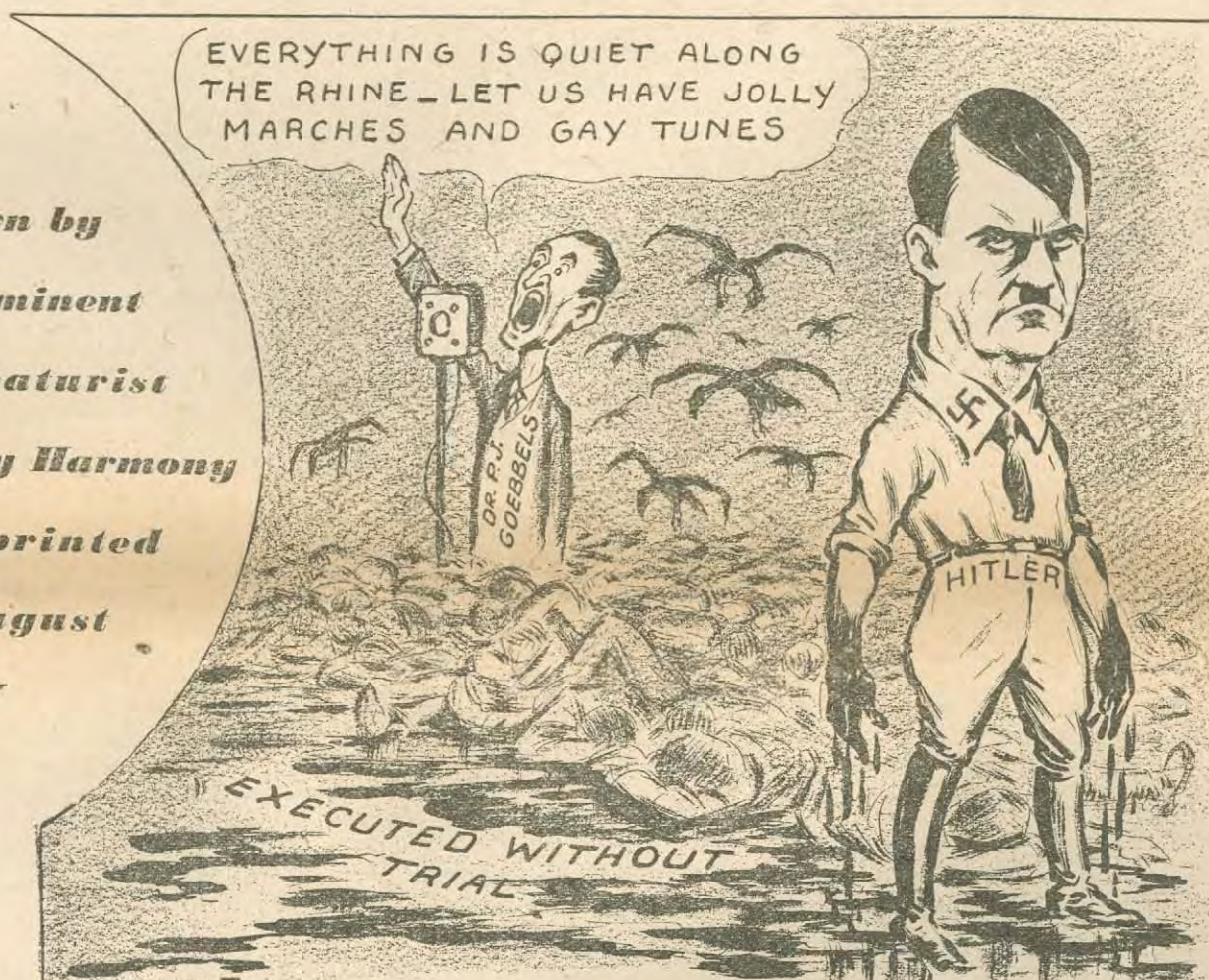
NOW

The Magazine That Has Something To Say - And Says It

Tells More In A Cartoon, Sometimes, Than

Many Writers Tell In Thousands Of Words

*Drawn by
the eminent
caricaturist
Henry Harmony
and printed
in August
NOW*



Q.—Powerful cartoon, isn't it? A.—Yes; it has been called the best cartoon dealing with the recent German madness. Almost always, you will find something outstanding in NOW; something to make you think. By the way, did you know that NOW became a quarterly with the August issue? The next issue will appear in the late Fall. Fifteen Cents the copy; subscription, 12 issues for \$1.50. Send cash, check or money order to the Circulation Manager, No. 34 Court Square, Boston, Mass.

The MICROPHONE, Inc.

Wednesday, September 5 - Fred Allen on NBC-WEAF at 9 P.M.

Highlights

- P.M.**
- 3.30—"A Layman Looks at Music," NBC-WEAF
 - 4.30—Chicago Symphony Orchestra, NBC-WJZ
 - 6.00—Tennis Resume, NBC-WEAF
 - 9.00—Motion Picture Association, NBC-WJZ
Fred Allen, James Melton, tenor, NBC-WEAF
 - 10.00—Byrd Expedition Broadcast, CBS-WABC
Guy Lombardo's Orchestra, NBC-WEAF
Dennis King, NBC-WJZ
 - 10.30—Harry Richman, John B. Kennedy, NBC-WJZ

(All programs are listed in Eastern Daylight Saving Time, Eastern Standard Time is one hour earlier, Central Time is two hours earlier.)

- 9 A.M. EDT; 8 EST; 7 CT
Herman and Banta, WEAF
Scissors and Paste, WGY
Breakfast Club, WJZ WBZ WBAL WHAM KDKA, 1 h. (WFLA, 45 m.) (WSM at 9.15)
- Devotion, WSM
Salt and Peanuts, WLW
The Song Reporter, Dick Newton, WABC WCAU
Devotions, WHAS, 30 m.
Early Birds, WNBX
9.15 A.M. EDT; 8.15 EST; 7.15 CT
Don Hall Trio, WEAF WGY WLW
Patterns in Harmon, WABC WCAU
9.30 A.M. EDT; 8.30 EST; 7.30 CT
Morning Glories, dance tunes, WEAF WGY
Joe Emerson, WLW
Morning Melodies, WEEI
Metropolitan Parade, WABC WPG, 30 m.; WHAS WCAU from 9.45
Wildcats, WHAS
9.45 A.M. EDT; 8.45 EST; 7.45 CT
Southernaires quartet, WEAF WEEI WLW
News, Trio, WEEI
Mid-Morning Devotions, WGY
Adrian O'Brien, WBZ
Work-A-Day Thoughts, KDKA
Bob Atcher, WHAS
10 A.M. EDT; 9 EST; 8 CT
Breen and de Rose, WEAF WEEI
The Southerners, WGY
Harvest of Song, WJZ WBZ WHAM KDKA WSM WFLA
Organ, WLW
Madison Singers, WABC WHAS WCAU WCAU
Home Hour, WPG, 1 h.; News at 10.30
What's on Today, WNBX
10.15 A.M. EDT; 9.15 EST; 8.15 CT
Clara, Lu 'n' Em, WEAF WEEI WGY WLW
Forenda Trio, WJZ WBZ WBAL
Ukulele Lou, WBZ
Birthday Club, WFLA
Sammy Fuller, KDKA
Bill and Ginger, WABC WCAU
Matinee Melodies, WNBX
10.30 A.M. EDT; 9.30 EST; 8.30 CT
News, Three Scamps, WEAF WSM
Organ, WEEI
The Market Basket, WGY
Today's Children, WJZ WBZ WBAL, KDKA WFLA
"All About You," Harold Sherman, WABC
News and Fiddlers' Fancy, WCAU, 30 m.; WHAS, 15 m.; WABC from 10.45
Jack Berch, WLW
10.45 A.M. EDT; 9.45 EST; 8.45 CT
Betty Crocker, WEAF WGY WLW WFLA
Good Morning Melodies, WEEI
News and NBC Radio Kitchen, WJZ KDKA WBAL (WSM at 10.50)
News, musicale, WBZ
Studio Program, WSM
Bob Atcher, WHAS
Daily Story, WNBX
11 A.M. EDT; 10 EST; 9 CT
Juan Reyes, pianist, WEAF WGY
Edison Friendly Kitchen, WEEI
Skip, Step and Happiana, WGY
The Wife Saver, WJZ
The Honey-mongers, WBZ WSM
Uncle Tom and Betty, KDKA
News, livestock, WLW
"Cooking Closeups," WABC WCAU
Farm Talk, WPG
Master Tommy Linton, WHAS
Parmenter and Severance, WNBX
11.15 A.M. EDT; 10.15 EST; 9.15 CT
Alice Remsen, contralto, WEAF WEEI WGY
Merry Macs, WJZ WHAM WBAL KDKA WSM
Women's Club News, WBZ
Franklin Bens' Orchestra, WLW
Morning Topics, WFLA
Franklin Bens' Orchestra, WGN
Rambles in Rhythm, WABC WCAU, 30 m.; Loretta Adams, soprano, WPG
Dolly Dean, WHAS
Town Crier, WNBX
11.30 A.M. EDT; 10.30 EST; 9.30 CT
Betty Moore, WEAF WEEI WGY WLW
U. S. Army Band, WJZ WBAL KDKA WFLA WSM, 30 m.; WHAM from 11.45
Household Chat, WNBX
11.45 A.M. EDT; 10.45 EST; 9.45 CT
Down the Song Trail, WEAF WEEI WGY
Painted Dreams, WLW WGN
Magic Recipes, WABC WHAS WCAU
Dell Henderson, songs, WPG
Poem, WNBX
12 N. EDT; 11 A.M. EST; 10 CT
Al and Lee Reiser, pianists, WEAF WEEI
Banjoists, WGY
Fields and Hall, WJZ WHAM KDKA WSM WFLA
Weather, The Monitor Views the News, WBZ

- Ward and Muzzy, piano duo, WLW
Betty Barthell, WABC WCAU WHAS
Home Sweet Home, WPG
Rod Arkell, WOR
Musical, WMCA, 30 m.
Tom, Dick and Harry, WGN
Morning Concert, WNBX
12.15 P.M. EDT; 11.15 A.M. EST; 10.15 CT
Honeyboy and Sassafras, WEAF WEEI
Martha and Hal, WGY
Charles Sears, tenor, WJZ WHAM KDKA WFLA WSM
Time, weather, temperature, WBZ
Midday Songs, KDKA
Babs and Don, WLW
"Chansonette," WABC WCAU WHAS WPG
Variety, WOR
Bob Farsans, tenor, WGN
Health talk, WNBX
12.30 P.M. EDT; 11.30 A.M. EST; 10.30 CT
Merry Madcaps, WEAF WEEI WGY WLW
Vic and Sade, WJZ WBZ KDKA WFLA WSM
Al Kavelin's Orchestra, WABC WCAU, 30 m. (WPG WHAS at 12.45)
Sanders Sisters, WHAS
Scott Fisher's music, WOR, 30 m.
Popular Rhythms, WGN
12.45 P.M. EDT; 11.45 A.M. EST; 10.45 CT
This and That, WEEI
Words and music, WJZ WHAM WFLA, 30 m. (WSM at 1.00)
William Penn Orchestra, KDKA
88 Notes and a Pair of Pipes, WBZ
String music, WSM
Live Stock Reports, WLW
Florida Male Quartet, WGN
Musical, WMCA, 30 m.
Royal Poet, WNBX
1 P.M. EDT; 12 N. EST; 11 A.M. CT
Markets, weather, WEAF
Radio Gang, WGY
Weather, agriculture, WBZ, 30 m.
Markets, KDKA
Ohio Farm Bureau, WLW
Noonday Dance, WFLA
Emil Velazco's Orchestra, WABC WCAU WHAS, 30 m. (WPG, 15 m.)
Mid-Day Service, WGN, 30 m.
Roger Van Duzer's Orchestra, WOR, 30 m.
Vermonters, WNBX
1.15 P.M. EDT; 12.15 EST; 11.15 A.M. CT
On Wings of Song, WEAF WEEI WGY
The Honorable Archie and Frank, WJZ KDKA WSM
Weather, WLW
Auditions, WFLA
New Jersey Women's Clubs, WPG
Mirror Reflections, WMCA
1.30 P.M. EDT; 12.30 EST; 11.30 A.M. CT
Dick Fidler's Orchestra, WEAF WEEI, 30 m.
Farm Program, WGY, 30 m.
National Farm and Home Hour, WJZ WBZ WHAM KDKA WSM WFLA, 1 h. (WLW at 1.40)
Joe Reichman's Orchestra, WABC WCAU WHAS WPG, 30 m.
Markets, ensemble, WGN
Bud Fisher's Orchestra, WMCA, 30 m.
Theatre Club, WOR
Dr. Forkell, WNBX
1.45 P.M. EDT; 12.45 EST; 11.45 A.M. CT
Harold Knight Orchestra, WABC
Verna Osborne, soprano, WOR
"Rube Appleberry," WGN
2 P.M. EDT; 1 EST; 12 N. CT
Two Seats in the Balcony, WEAF WEEI WGY, 30 m.
The Romany Trail, WABC WPG WCAU, 30 m.
Weather, markets, WHAS
Trio, WOR
Singers, WMCA
Jesse Crawford, organist, WGN
2.15 P.M. EDT; 1.15 EST; 12.15 CT
Romance of Helen Trent, WABC WCAU WGN
Wildcats, WHAS
Newark Orchestra, WOR
Musical, WMCA
2.30 P.M. EDT; 1.30 EST; 12.30 CT
The Sizzlers Trio, WEAF WEEI
Albany on Parade, WGY
Home Sweet Home, sketch, WJZ WHAM
Home Forum Cooking School, WBZ, 30 m.
KDKA Home Forum, KDKA, 30 m.
Gene Burchell's Orchestra, WLW
Markets, WSM
Bookman, theatre review, WFLA
Swinging Along, WABC WHAS WPG
Woman's Club, WCAU, 30 m.
Martha Deane, WOR, 30 m.
Texas Cowboys, WMCA, 30 m.
Century of Progress, orchestra, WGN
2.45 P.M. EDT; 1.45 EST; 12.45 CT
Ma Perkins, WEAF WEEI WGY WLW WSM
Colette Carlay, songs, WJZ WHAM WFLA
Crane Calder, bass, WABC
College of Agriculture, WHAS
Palmer House Ensemble, WGN
3 P.M. EDT; 2 EST; 1 CT
Dreams Come True, WEAF WEEI WGY WLW
Don Carlos' Orchestra, WJZ WBZ WHAM KDKA WFLA
Camay Minstrels, WLW
Piano, WSM
Ann Leaf, organ, WABC WPG WCAU, 30 m.
University of Kentucky, WHAS, 30 m.
Ensemble, WOR, 30 m.
Charles Massinger, WMCA
Century of Progress orchestra, WGN
3.15 P.M. EDT; 2.15 EST; 1.15 CT
"Wise Man," WEAF WGY WFLA
Del Castillo, WEEI
Harry Kogen's music, WEAF WJZ WBZ WHAM KDKA WFLA
Rainbow Court, WLW
Islanders, WMCA
Baseball, Chicago vs. New York, WGN, 2 h., 30 m.
3.30 P.M. EDT; 2.30 EST; 1.30 CT
Woman's Radio Review, "A Layman Looks at Music," WEAF WGY WFLA, 30 m.
Bond of Friendship, WLW
Manhattan Moods, WABC WCAU WPG WHAS, 30 m.
Museum Talk, WOR
Sports Review, Concert Artists, WMCA, 2 h.
Concert, WNBX
3.45 P.M. EDT; 2.45 EST; 1.45 CT
Joe White, tenor, WJZ WBZ WHAM WSM
Human Values, KDKA
Ethel Ponce, songs, WLW
Frank Ricciardi, baritone, WOR

Alluring



CLAIRE WILLIS is one of the more attractive soloists who appear with radio dance orchestras. She is heard whenever PANCHO and his orchestra play on the air.

- 4 P.M. EDT; 3 P.M. EST; 2 CT
WEAF WEEI WSM WFLA, 30 m. (WGY, business talk to 4.10)
Pops Concert, direction of Christian Kriens, Betty and Bob, WJZ WBZ WHAM KDKA WLW
"On the Village Green," Howard Barlow, WABC WHAS, 30 m.
Tea Time Topics, WPG, 30 m.
The Apple Knoster, WCAU, 30 m.
Dr. H. I. Strandhagen, WOR
Afternoon Concert, WNBX
4.15 P.M. EDT; 3.15 EST; 2.15 CT
Divano's music, WLW
Banjo, piano, WOR
Bob Wilson's Orchestra, WNBX
4.30 P.M. EDT; 3.30 EST; 2.30 CT
The Jesters, trio, WEAF WEEI WSM
Old Observer, WGY
Chicago Symphony Orchestra, Henry Hadley, directing, WJZ WSM WHAM, 1 h. (WBZ, 30 m.) (WFLA from 4.45) (KDKA, 30 m. from 4.45)
Markets, KDKA
Life of Mary Sothorn, WLW
Lorain Talley, WFLA
Edgar Sydenstricker, Div. of Research, Milbank Memorial funds, "The Depression and the Nation's Health," WABC
Drama, stocks, WCAU
Stocks WPG
Irving Aaronson's Orchestra, WOR, 30 m.
Green Mt. Singer, WNBX
4.45 P.M. EDT; 3.45 EST; 2.45 CT
Adventures on Mystery Island, WEAF WEEI WFLA, 30 m.
Stocks, WGY
Business News, WLW
The Instrumentalists, WABC WHAS WPG WCAU
Jeffery Michand, WNBX
5 P.M. EDT; 4 EST; 3 CT
Henry King's Orchestra, WEAF WGY WLW WFLA, 30 m. (WEEI, 15 m.)
The Monitor Views the News, WBZ
Afternoon Musical, WGN, 1 h., 15 m.
Jack Brooks Orchestra, WABC WHAS, 30 m. (WCAU WPG at 5.15)
Fur Trappers, WCAU
The Trappers, WCAU
Variety, WOR
Dorris Gibson, WNBX
5.15 P.M. EDT; 4.15 EST; 3.15 CT
Sybil Jane Morse, pianist, WEEI
Skipper Jim's Mythical Ship, WBZ
Kidnies Klub, KDKA
Devotions, WHAS
Kingie, guitar, WPG
Amateur Astronomers, talk, WOR
Marvels, WNBX
5.30 P.M. EDT; 4.30 EST; 3.30 CT
Old Jim Bridger, WEAF WEEI WGY WSM
Singing Lady, WJZ WBZ WHAM KDKA WLW
Ralph Dean's toy band, WLW
Ralph Watters, WFLA
Jack Armstrong, WABC WCAU
Weather, Joe Small's Orchestra, WPG
Christine Ridge, WHAS
Town Talk, WOR
Sally's Party, WMCA, 30 m.
Farm Flashes, WNBX
5.45 P.M. EDT; 4.45 EST; 3.45 CT
Oleanders, WEAF WEEI WGY WSM WFLA Tenor, WGY
Little Orphan Annie, WJZ WBZ KDKA
The Texans, WLW
Gordon, Dave, Bunny, WABC WHAS WCAU
Larry Charles, tenor, scores, WPG
Tex Fletcher, Lonely Cowboy, weather, WOR
Chicago Symphony Orchestra, WGN, 45 m.
Andy Canedy, WNBX
6 P.M. EDT; 5 EST; 4 CT
Resume National Tennis Championships, WEAF WLW WFLA
Evening Tattler, WEEI, 30 m.
Evening Brevities, WGY
Education in the News, WJZ WSM WFLA
Dolly Morrow's Music Makers, WBZ
Dan and Sylvia, KDKA
Buck Rogers, WABC WCAU WHAS
Uncle Don, WOR, 30 m.
Orchestra, WMCA, 30 m.

- 6.15 P.M. EDT; 5.15 EST; 4.15 CT
Al Pearce's Gang, WEAF WLW WFLA
Joe and Eddie, WGY
Alma Kitchell, soprano, WJZ WHAM WSM
Bill Williams, WBZ
Baseball, KDKA
Bobby Benson and Sunny Jim, WABC WCAU
Organ, WHAS, 30 m.
Recordings, WNBX
6.30 P.M. EDT; 5.30 EST; 4.30 CT
Martha Mcars, WEAF WGY
Current Events and baseball scores, WEEI
Grace Hayes, songs (news at 6.40) WJZ WBAL WHAM WFLA
Time, weather, WBZ
Comedy Stars of Hollywood, KDKA
Jack Armstrong, WLW
String Music, WSM
News and Jerry Cooper, WABC
Billy Hays' Orchestra, WCAU
WGN Orchestra, WGN
News, WOR
Screen revue, WMCA
Sports, WNBX
6.45 P.M. EDT; 5.45 EST; 4.45 CT
Billy Batchelor, Raymond Knight, WEAF WGY
Nauticleers, WEEI
Lowell Thomas, news, WJZ WBZ WHAM WLW KDKA WFLA
Summary of Play, National tennis matches, WABC WCAU WHAS
Little Orphan Annie, WGN WSM
Variety, WOR
Sports, WMCA
Bob Church, WNBX
7 P.M. EDT; 6 EST; 5 CT
Baseball Resume, WEAF
Gould and Sheffer, piano duo, WEEI WFLA
Jules Lande, violinist, WGY
Johnny Johnson's Orchestra, WJZ WHAM, 30 m. (KDKA at 7.15)
News, Drama, and Spiritual Singers, WBZ, 30 m.
Music, news, drama, KDKA
Piano, WSM
Crosley Salon Orchestra, WLW
Gene Kardos' Music, WABC
Ford Erick, sports, WOR
Orchestra, WGN
Gloria Grafton, actress, WMCA
Serenade, WHAS
7.15 P.M. EDT; 6.15 EST; 5.15 CT
Gene and Glenn, WEAF WGY WFLA
Dick Tracy, detective, WEEI
Hal Kemp's Orchestra, WGN
Vera Van, songs, WABC WCAU
Club Program, WHAS
Financial News, WSM
Joe Emerson's Orchestra, WLW
Piano Duo, WOR
Palmer House, Ensemble, WGN
Vagabond Singers, WMCA
7.30 P.M. EDT; 6.30 EST; 5.30 CT
Pickens Sisters, WEAF WGY
After Dinner Revue, WEEI, 30 m.
Colonials, WGY
Irene Rich, dramatic sketch, "Jewels of Enchantment," WJZ WBZ WHAM KDKA WSM
Bob Newhall, WLW
Garden of Melody, WFLA
Phil Spitalny's Ensemble, WABC WCAU
Buck Rogers, WHAS
The O'Neills, WOR
Orchestra, WMCA
Melody Masters, WLW
Sports reporter, WGN
7.45 P.M. EDT; 6.45 EST; 5.45 CT
Sisters of the skiff, WEAF WGY WSM
Frank Buck, WJZ WBZ WHAM WBAL KDKA WFLA
Melody Masters, WLW
Boake Carter, news, WABC WCAU WHAS
"Less, the Furnace Man," WOR
A. Cloyd Gill, news commentator, WMCA
World's Fair news, WGN
8 P.M. EDT; 7 EST; 6 CT
The Baron, Peter Van Steeden's Orchestra, WEAF WEEI WGY WSM WFLA, 30 m.
Crime Clues, drama, WJZ WBZ KDKA, 30 m.
Bavarian Orchestra, WHAM, 30 m.
Crime Clues, WLW, 30 m.
Phil Spitalny's Ensemble, Maxine, WABC WCAU
Sam, Gil, Louie, WHAS
Ted Weitz, songs, WPG
Three Little Funsters, WMCA
Bob Church, WNBX
Fran Frey's Frolic, WOR, 30 m.
8.15 P.M. EDT; 7.15 EST; 6.15 CT
Edwin C. Hill, "The Human Side of the News", WABC WCAU WPG
Helen Lee's Orchestra, WHAS
5-Star Final, WMCA
WGN Orchestra, WGN
8.30 P.M. EDT; 7.30 EST; 6.30 CT
Wayne King's Orchestra, WEAF WEEI WGY WSM, 30 m.
Unbroken Melodies, WLW
Mario Cozzi, baritone, WJZ WBZ KDKA
Everett Marshall's Broadway Vanities, Colette Carlay, WABC WCAU WHAS, 30 m.
Jane and Jimmy Cullen, WPG
The Lone Ranger, WGN, 30 m.
U. S. Marine Band, WMCA, 1 h.
8.45 P.M. EDT; 7.45 EST; 6.45 CT
Thornton Fisher, Sport Stories off the Record, WJZ KDKA WHAM
Magic Strings, WBZ
Monkey Hollow, sketch, WLW
9 P.M. EDT; 8 EST; 7 CT
Town Hall Tonight, Fred Allen, James Melton, Lennie Hayton's Orchestra, WEAF WEEI WGY WLW WSM, 1 h.
Motion Picture Association Program, -WJZ WBZ WHAM WBAL, 30 m.
Mickey Cochran, baseball, WABC WCAU WHAS

- "Footlight Echoes," WOR, 30 m.
Chicago Symphony Orchestra, WGN, 1 h.
9.15 P.M. EDT; 8.15 EST; 7.15 CT
Variety, WFLA
Polka, Pogue, from Weinberger's
"Schwanda," overture to Goldmark's
"Sakuntala"; Gluck-Mottl Ballet Suite;
Rimsky-Korsakoff's "Sadko"; Dvorak's
"Humoresque," WABC WCAU WHAS,
45 m.; WPG, 15 m.
9.30 P.M. EDT; 8.30 EST; 7.30 CT
First America's Cup Races, WJZ
Imperial Hawaiians, WPG, 30 m.
Shindig, WOR
Travelogue, WMCA
9.45 P.M. EDT; 8.45 EST; 7.45 CT
Leah Colbert, WFLA
"That's Life," News drama, WOR, 30 m.
10 P.M. EDT; 9 EST; 8 CT
Lombardo-Land, Pat Barnes, WEAF WEEI
WGY WLW WFLA WSM, 30 m.
Dennis King, Louis Katzman's Orchestra,
WJZ WBZ KDKA
Byrd Expedition Broadcast, WABC WCAU
WHAS, 30 m.
Andersons, WPG
News, WGN
10.15 P.M. EDT; 9.15 EST; 8.15 CT
Eddie Duchin's Orchestra, WJZ WBZ KDKA
Pinkie Terry, WPG
News, WOR
Jerry Arlen's music, WMCA
Comedy Stars, WGN
10.30 P.M. EDT; 9.30 EST; 8.30 CT
"The Other Americas," Edward Tomlinson,
WEAF WGY, 30 m.
Manhattan Merry-Go-Round, WEEI, 30 m.
Jack Denny's Orchestra, Harry Richman and
John B. Kennedy, WJZ WHAM, 30 m.
"Radiance," WBZ, 30 m.
Henry Theis' Orchestra, WLW
The Old Observer, KDKA
Jimmy Gallagher's Orchestra, WSM
WFLA Players, WFLA, 30 m.
Crusade Against Crime, WABC WCAU
WPG WHAM, 30 m.
"Vignettes," WOR, 30 m.
Charles Barnett's music, WMCA, 30 m.
Johnny Hamp's Orchestra, WGN
10.45 P.M. EDT; 9.45 EST; 8.45 CT
Rep. Finlay Gray, WLW
Dream Ship, WGN
11 P.M. EDT; 10 EST; 9 CT
Harry Meyer's Music, WEAF WFLA, 30 m.
(WGY, 15 m.)
E. B. Rideout, news and baseball scores,
WEEI
Zigzag Circle Ranch, WJZ WBAL WHAM
Weather and "Song Painter," WBZ
Sports, KDKA
Frank Buck, WSM
Cosmopolitan Serenade, WLW, 30 m.
Nick Lucas, songs, WABC WCAU WHAS
Seashore Hotel Guide, WPG
Weather, Bert Block's Orchestra, WOR,
30 m.
June Provines, WGN
11.15 P.M. EDT; 10.15 EST; 9.15 CT
Bob Grant's Orchestra, WGY
Robert Royce, tenor, WJZ WBZ WHAM
KDKA
Gene and Glenn, WSM
Little Jack Little's Orchestra, WABC WPG
WHAS WCAU, 30 m.
Lum and Abner, WGN
WHAS Concert Orchestra, WHAS
11.30 P.M. EDT; 10.30 EST; 9.30 CT
National Radio Forum, WEAF WEEI
WGY WSM, 30 m.
Don Bestor's Orchestra, WJZ WBZ
WHAM, 30 m.
William Penn Orchestra, KDKA, 30 m.
Castle Farm maids, WLW, 30 m.
Organ, WHAS, 30 m.
Eddie Lane's Music, WOR, 30 m.
Wayne King's Orchestra, WGN
11.45 P.M. EDT; 10.45 EST; 9.45 CT
Dance Music, WHAM
Frank Dailey's Orchestra, WABC WCAU
WHAS WPG
Jan Garber's Orchestra, WGN, 30 m.
12 M. EDT; 11 P.M. EST; 10 CT
Buddy Rogers' music, WEAF WEEI, 30 m.
Marshall Van Pool's Orchestra, WGY,
30 m.
News, Lary Lee's Orchestra, WLW
Red Nichol's Orchestra, WABC WCAU
WHAS, 30 m.
Dance Orchestra, WOR
12.15 A.M. EST; 11.15 P.M. EST; 10.15 CT
Ted Weems' Orchestra, WGN
12.30 A.M. EDT; 11.30 P.M. EST; 10.30 CT
Clyde Lucas' Orchestra, WEAF WLW,
30 m.
Ray Nichols Orchestra, WGY, 30 m.
Jack Berger's Orchestra, WJZ WBZ
WHAM KDKA, WLW, 30 m. WSM at
12.45
Baseball scores, piano, WSM
Al Kavelin's music, WABC WCAU, 30 m.
Jean Wiener, organist, WPG, 30 m.
Louis Panico's Orchestra, WHAS, 30 m.
Johnny Hamp's Orchestra, WGN
1 A.M. EDT; 12 M. EST; 11 P.M. CT
Gene Kardos' Orchestra, WABC
Miller Welch's Orchestra, WHAS
Coney Island Orchestra, WLW, 30 m.
Charles Boucett's Orchestra, WOR, 30 m.
Bob Pacelli's Orchestra, WGN

**STATION
DIRECTORY
Page 4**

After the Theatre
Barbeued Chicken
In a quiet nook at
SLADES BARBECUE
958 Tremont St.—967 Tremont St.
435 Columbus Ave.
BOSTON, MASS.
Open All Night

Introducing

EACH Monday morning at 9.30 o'clock, when 'tis said, the collective buying ear of femininity is carefully and candidly tuned to the best values for the week and the newer tips and fancies of fashion, one Jean Abbey, the voice of the *Woman's Home Companion*, holds sway on the WEEI wave length. Her material ranks with the best, bearing the stamp of approval of the woman's magazine with the largest world circulation.



JEAN ABBEY

Jean, whose bewitching radio manners are perhaps but a throwback to the historic lore of her native Salem which knows her as Marie Turner, identifies two salient features in her weekly offerings. The first is fashions—which means up to the minute highlights. The second is devoted strictly to the home, consisting chiefly of interesting and inexpensive suggestions for making the home more comfortable. The two emphasized points combine nicely with a rather general resume of nationally advertised products appearing in the magazine. Thus is the buyer's confidence established in an entertaining though strictly factual manner.

Rigged in the manner of a shopping tour for the audience, Miss Abbey rotates the mythical shopping trips. White's is vis-

ited one week, Jordan Marsh Company the next, Hovey's or Houghton's as the cycle dictates. The speaker's information is, of course, all authentically based on intimate information personally obtained at the aforementioned stores.

As concerns Jean Abbey's background, it is interesting to note that she specialized in clothes and costume designing during her tenure at the Massachusetts School of Art, whence she matriculated after Salem High School.

She has occupied sales promotion posts in department store work, has specialized in styling, and will be remembered by many as the author of the closely followed women's newspaper feature "Leaders In Fashion." Her radio work, therefore, while in its first year, is correctly ballasted with the weight of experience with which may properly be said to be blended a correct and pleasing microphone personality.

Because the advertising pages of the *Women's Home Companion* are guides to satisfaction and safety, it is Jean Abbey's obvious purpose to advocate and sponsor careful and intelligent buying.

Earle Nelson

Back On Air

Monday afternoon, September 10, at 3.30 o'clock, marks the return of Earl Nelson to the WEEI microphones when he is booked to appear on the "Stardom Express" program, new and much listened to broadcast feature from that point. For the past eighteen months Earl has been touring New England theatres on an itinerary that would make a travel agent blink.

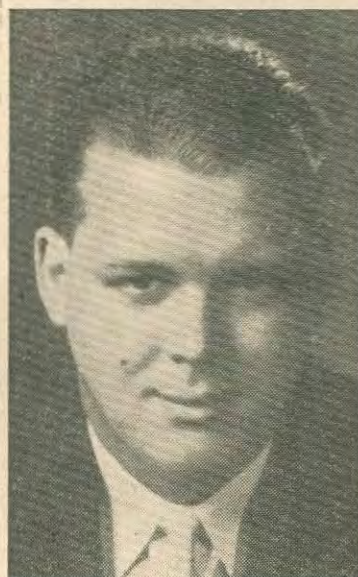
**A Mainstay From Maine
On Four WEEI Programs**

**Boy Soprano Finds
Baritoning More
Profitable**

East Corinth, Maine, lends an ear to the blonde viking Dorr, who first answered to the name of Russell in that environment some 27 years ago—when his vocal talents were little more than healthy, guttural squawks. A far cry from his present brand of baritoning on such WEEI program features as the Jenney Concert Hour, After Dinner Revue, Edison Salute and Studio Chorus broadcasts, they, nevertheless, must have hinted at quality as parental encouragement sent him to the local town hall on his 4th birthday to sing "Little George Washington Never Told A Lie."

He deserted the amateur singing ranks at the age of nine to accept a berth as boy soprano at Grace Episcopal Church, Manchester, New Hampshire, only to be stalemated within a year by an attack of scarlet fever with complications. Medical men despaired of his voice if not his complete future. A shock of blonde, matted hair six feet three inches above the floor now tops off his 230-pound framework which gives the lie to the medic; also the splendid power to the Dorr voice.

When Russell reached high school age, the family moved to the Bay State, Boston's Allston section. He immediately found himself absorbing valuable voice instruction from Professor J. P. McVey, who directed him in the



RUSSELL DORR

local Church choir—at least until his voice started changing. Incidentally NBC's Jay Alden Edkins, like Dorr, a Massachusetts Atwater-Kent auditions winner, sang with the same group.

With the flair for vocal effort temporarily dormant, his mother, a New England Conservatory graduate, decided to foster his interest in music in another direction and proceeded to teach him the mysteries of the piano keyboard. It encouraged him to organize the local lads for orchestral work, with his own share of the symphonic result divided between the saxophone and clarinet. Between times he captured a track medal or two and shagged baseballs with some good Brighton High teams.

One final fling before gradu-

ation with the singing class resulted in his dismissal from the room for not singing on pitch and yet singing loud enough to throw the others off. It was then he decided to take up drawing and followed his high school prelude with three years at the Alandale Studios studying commercial art. His teachers had just predicted a bright future for him in this new field when he chanced the call of the sea and shipped out of Boston on a freighter to eventually wind up in Vancouver, B. C.

No more art study or school books when he returned so he mulled around on a few odd jobs with a side line consisting chiefly of jumping from one voice instructor to another. The voice germ had bitten him again and he started doing sustaining bits from local radio studios.

In 1932 he landed his first commercial broadcast program, the same year he began voice study with Madame Pieretto Bianco. His star has since been rapidly ascending with ample air work to keep him fully occupied and happy.

His present weaknesses are vegetable plates featuring raw carrots, along with a yen to trek to Italy in 1935 for the purpose of studying for concert and opera—also with Madame Bianco, who travels annually to the land of operatic luminaries and career-bound baritones. He undoubtedly has what it takes to carve out for himself a substantial future in the world of music. The public acceptance of his radio work says "amen" to that.

NEWS WEEI BRIEFS

The early Monday evening offerings of the Bye family have been accorded such a happy reception that the seven o'clock period has been reserved for them through September 10th. There is real talent within the family as attested by the variety of well-



arranged programs of choice music from the best composers... Ho-hum, up anchor and peeking over the lee rail of the good U. S. Line ship Washington, stood little Fran—Miss McLaughlin to Europeans—leaving with every lurch of the boat, luncheon companions, program sheets and pals either at the dock or WEEI studio wishing her a lot of deserved well as she scajaunts to sojourn, merely vacationing you know... And Carleton Dickerman puts the WEEI announcers back on a normal schedule by returning from vacation land at Troutdale, Me., where he walked, fished and gained five pounds weight for which he has absolutely no use... Note that the Edison Salute has switched to Thursday at seven o'clock and Sunday at six-thirty; also the time change on

Studio Chorus with Bobby Banks which is now to be heard from 7.00 to 7.15 on Wednesday and Friday—and for those who enjoy community singing an open invitation is extended to come to the studios and give voice to the happy gathering... An interesting educational bit will be the Tuesday evening program of the American Institute of Bankers at 9 o'clock. Silver ten-year-service-pins are adorning the vests of the veteran Burton-Whitcomb combine... A couple of aces were



trumped at WEEI a few days back when bosses Burton and Whitcomb got themselves in the way of a party for working ten years with the Edison Company piloting and steering the broadcasting business. The way the thing was done up was more than less of a tip as to how the toilers appreciate the head men, a sentiment most graciously put into words by Big Chief "Uncle Joe" before he let 'em eat cake and unbale the gift packages... a typical WEEI family affair... "Treasure Adventures of Donald

Ayers," a new Thursday series to be heard weekly at 5.15 o'clock gets under way on the 6th under the sponsorship of Bond Electric Corporation... Marcelle Poirier's soloing with the Teddy Bears on Monday evening After Dinner Revue programs is all to the merry say the voice critics smilingly who all predicted plenty of future for Marcelle on her initial microphone appearance... And Hawkins tipped off a Maine game warden to watch out for Whitman but the warden and Fred were disappointed when Vic produced his license... Hawkins is a Tattler... More about this on one of the programs according to Vic

Will wonders never cease—apparently not, since we have an affidavit verifying the appearance of Eby Rideout leaning wistfully on the stretch rail at Gansett tearing tickets with the aplomb and finesse of a hardened track follower... Sibyl Morse is shipping in the last lot of vacation cards from the north country.



RAY KNIGHT
As
Billy Bachelor
Returns to
WHEATENAVILLE
and
Sta-WEEI-tion
with
JANET, PETER
and **PAN**
6:45 - 7:00
MONDAY
through
FRIDAY

STARDOM EXPRESS
—
potpourri
of better
radio bits
DRAMA
MUSIC
NOVELTY
VOICE
monday
afternoon
3:30
Sta-WEEI-tion

Thursday, September 6 - Whiteman's Music, NBC-WEAF, 10 P.M.

Highlights

- P.M.
5.00—"An Appraisal of America," NBC-WEAF
8.00—Rudy Vallee, NBC-WEAF
Kate Smith, CBS-WABC
8.15—Walter B. Pitkin, CBS-WABC
9.00—Captain Henry's Show Boat, NBC-WEAF
10.00—"45 Minutes in Hollywood," CBS-WABC
Paul Whiteman, NBC-WEAF
10.30—Echoes of the Palisades, NBC-WJZ

(All programs are listed in Eastern Daylight Saving Time, Eastern Standard Time is one hour earlier, Central Time is two hours earlier.)

- 6.45 A.M. EDT; 5.45 EST; 4.45 CT
Tower Health Exercises, WEAF WEEI WGY, 1 h.
7 A.M. EDT; 6 EST; 5 CT
Musical Clock, WBZ (KDKA, 1 h.)
7.30 A.M. EDT; 6.30 EST; 5.30 CT
McCormick's Fiddlers, WLW, 30 m.
Organ Reveille, WABC, 30 m.
Yoichi Hirakawa, xylophone, WJZ WBAL
7.45 A.M. EDT; 6.45 EST; 5.45 CT
Pollock and Lawnhurst, WEAF WGY
Melody Race, WEEI
Jolly Bill and Jane, WJZ WBAL
8 A.M. EDT; 7 EST; 6 CT
Organ Rhapsody, WEAF, 30 m.
E. B. Rideout, WEEI
Musical Clock, WGY, 30 m.
Morning Devotions, WJZ KDKA
Prayer, WLW
Salon Musicale, WABC, 45 m.
Morning Melodies, WPG
8.15 A.M. EDT; 7.15 EST; 6.15 CT
Landt Trio and White, WJZ WBZ KDKA WBAL
Devotions, WLW
Health Exercises, WPG
News, WNBX
8.30 A.M. EDT; 7.30 EST; 6.30 CT
Cherico, WEAF WEEI WGY WLW, 30 m.
Lew White, organist, WJZ WHAM WBAL KDKA, 30 m.; WBZ, 15 m.
Paul and Bert, WSM
Musical Clock, WFLA
Organ, WPG
8.45 A.M. EDT; 7.45 EST; 6.45 CT
Bronco Busters, WSM
Morning exercises, WFLA (WSM at 9.15)
Caroline Gray, pianist, WABC
9 A.M. EDT; 8 EST; 7 CT
Herman and Banta, WEAF WEEI
Forest Willis, WGY
Breakfast Club, WJZ WBZ WHAM WFLA, 1 h. (WSM at 9.15) (KDKA, 30 m.)
Salt and Peanuts, WLW
Devotions, WSM
The Song Reporter, Dick Newton, WABC WCAU
Devotions, WHAS, 30 m.
Early Birds, WNBX
9.15 A.M. EDT; 8.15 EST; 7.15 CT
Don Hall Trio, WEAF WEEI WGY WLW
Mood Neopolitan, WABC, 30 m. (WPG from 9.30)
9.30 A.M. EDT; 8.30 EST; 7.30 CT
Morning Glories, WEAF WEEI
Little Jack Little's music, WGY
Joe Emerson, hymns, WLW
Wildcats, WHAS
9.45 A.M. EDT; 8.45 EST; 7.45 CT
Sylvan Trio, WEAF WEEI WLW
Three Shades of Blue, WGY
Sammy Fuller, KDKA
Eton Boys, quartet, WABC WCAU
Dave Tyson, songs, WPG
Bob Atcher, WHAS
Jean Gravelle's Orchestra, WMCA
10 A.M. EDT; 9 EST; 8 CT
Green and de Rose, WEAF WEEI WGY
Edward MacHugh, gospel singer, WJZ WBZ WHAM KDKA WSM WFLA
Health Talk, WLW
Bill and Ginger, WABC WCAU WHAS
Home Hour, WPG, 1 h., news at 10.30
Ocean-Born Mary, WNBX
10.15 A.M. EDT; 9.15 EST; 8.15 CT
Clara, Lu 'n' Em, WEAF WEEI WGY WSM
Castles of Romance, WJZ WHAM KDKA
Duke Dewey's Orchestra, WBZ
Organ, WLW
Variety, WFLA
Ida Bailey Allen, WABC WCAU
10.30 A.M. EDT; 9.30 EST; 8.30 CT
News, Morning Parade, WEAF, 45 m.; (WGY from 10.45) (WSM, 30 m.)
Today's Children, WJZ WBZ KDKA WFLA
Mail Bag, WLW
News and Artist Recital, WABC WCAU WHAS
Matinee Melodies, WNBX
10.45 A.M. EDT; 9.45 EST; 8.45 CT
Good Morning Melodies, WEEI
News and Radio Kitchen, WJZ KDKA WFLA
News, interlude, WBZ
Elliott Brock, violin, WLW
Tenor, WGN
Dr. William Bierman, "When Fever is of Value," WABC WCAU WHAS WPG
Daily Story, WNBX
11 A.M. EDT; 10 EST; 9 CT
Galaxy of Stars, WGY, WLW
U. S. Navy Band, WJZ WBZ KDKA WFLA WSM, 30 m. (WHAM from 11.15)
Swinging Along, WABC WCAU WPG WHAS, 30 m.
Concert, WNBX

- 11.15 A.M. EDT; 10.15 EST; 9.15 CT
Frances Lee Barton, WEAF WEEI WGY WLW
Town Crier, WNBX
11.30 A.M. EDT; 10.30 EST; 9.30 CT
Pedro Via's Orchestra, WEAF WEEI, 30 m.
Southerners, WGY
Hazel Arth, contralto; Andy Sanella, guitarist, WJZ WBAL KDKA WSM
ERA Chorus, WBZ, 30 m.
Music, WHAM
Market Reports, news, WLW
Madison Ensemble, WABC WCAU WHAS WPG, 30 m.
Devotional Hour, WNBX
11.45 A.M. EDT; 10.45 EST; 9.45 CT
Banjoists, WGY
Al and Lee Reiser, WJZ WHAM KDKA WSM WFLA
Painted Dreams, WLW
Poem, WNBX
12 N. EDT; 11 A.M. EST; 10 CT
Mohawk Treasure Chest, Ralph Kirby, baritone, WEAF WEEI WGY WLW
Fields and Hall, WJZ WHAM KDKA WSM WFLA
Weather, Monitor Views the News, WBZ
Connie Gates, songs, WABC WCAU WHAS
Home Sweet Home, WPG
Danny Dee, WOR
Luncheon Musicale, WMCA
Lawrence Salerno, songs, WGN
Victor Program, WNBX
12.15 P.M. EDT; 11.15 A.M. EST; 10.15 CT
Honeyboy and Sassafras, WEAF WEEI
Astarte and Hal, WGY
String Ensemble, WSM
Merry Macs, WJZ WHAM KDKA WFLA
Time, weather, WBZ
Hilites, WLW
Along the Volga, WABC WHAS WPG
Tom Davis, tenor, WOR
Doring Sisters, WGN
NRA talk, WNBX
12.30 P.M. EDT; 11.30 A.M. EST; 10.30 CT
Rex Battle's Ensemble, WEAF WGY
Vic and Sade, WJZ KDKA WSM WFLA.
Al Kavelin's Orchestra, WABC WCAU WHAS, 30 m. (WPG from 12.45)
Fur Trappers, WCAU, 30 m.
Stocks, WMCA
Orchestra, WOR, 30 m.
Markets, organ, WGN
Mountaineers, WNBX
12.45 P.M. EDT; 11.45 A.M. EST; 10.45 CT
Vagabonds, WGY
N. E. Farm Talk, WBZ, 30 m.
Words and Music, WJZ WHAM WSM, 30 m.
"8 Notes and a Pair of Pipes," WBZ
William Penn Orchestra, KDKA Ensemble, WLW
Agriculture report, WFLA
June Baker, WGN
Musical, WMCA, 30 m.
News Week, WNBX
1 P.M. EDT; 12 N. EST; 11 A.M. CT
Markets, weather, WEAF KDKA
Bob Albright, WLW
Variety, WFLA, 30 m.
Emil Valzaco's Orchestra, WABC, 30 m.
Hotel Morton Music, WPG, 30 m.
Roger Van Duzer's music, WOR, 30 m.
Mid-day Service, WGN, 30 m.
Bob Neal, WNBX
1.15 P.M. EDT; 12.15 EST; 11.15 A.M. CT
Dick Fidler's music, WEAF
Musical Program, WGY
The Honorable Archie and Frank, WJZ KDKA WSM
River and Markets, weather reports, WLW
Mirror Reflections, WMCA
Vermonters, WNBX
1.30 P.M. EDT; 12.30 EST; 11.30 A.M. CT
Merry Madcaps, WEAF WEEI, 30 m.
WGY Farm Program, WGY, 30 m.
National Farm and Home Hour, WJZ WBZ WHAM KDKA WLW WSM WFLA, 1 h.
Frank Dailey's Orchestra, WABC WCAU WHAS, 30 m.; WPG, 15 m.
Bud Fischer's Orchestra, WMCA, 30 m.
Markets, music, WGN
Theatre Club of the Air, WOR
Vermonters, WNBX
1.45 P.M. EDT; 12.45 EST; 11.45 A.M. CT
Leola Lewis, contralto, WPG
Venna Osborne, soprano, organ, WOR
Palmer House Ensemble, WGN
Farm Reporter, WNBX
2 P.M. EDT; 1 EST; 12 N. CT
Stones of History, WEAF WEEI, 30 m.
NEN Pure Food Institute, WEEI, 30 m.
Paul Curtis, tenor, WGY
Ann Leaf, organist, WABC WCAU WPG
Weather, markets, WHAS
Studio orchestra, WOR
Jesse Crawford, organ, WGN
"Women and Money," WMCA
2.15 P. M. EDT; 1.15 EST; 12.15 CT
Household Chat, WGY
Abraham Chasins, pianist, WABC WCAU WPG
Wildcats, WHAS
Memories, WOR
Musical, WMCA
Romance of Helen Trent, WGN
2.30 P.M. EDT; 1.30 EST; 12.30 CT
Trio Romantique, WEAF WEEI WLW
Albany on Parade, WGY
Home, Sweet Home, WJZ WHAM WFLA
Cooking School, WBZ, 30 m.
KDKA Home Forum, KDKA, 30 m.
Poetic Strings, WABC WPG, 30 m.
Three Shades of Harmony, WHAS
Dance Tunes, WLW, 30 m.
Markets, WSM
Century of Progress music, WGN
Martha Deane, WOR, 30 m.
Texas Cowboys, WMCA, 30 m.
2.45 P.M. EDT; 1.45 EST; 12.45 CT
Ma Perkins, WEAF WEEI WGY WLW WSM
Joe White, tenor, WJZ WHAM WFLA
Palmer House Orchestra, WGN
Agricultural College, WHAS
Palmer House Ensemble, WGN

Philosopher



WALTER B. PITKIN, author of three "best sellers," economist, lecturer, gentleman farmer, newspaperman and professor of journalism, who pauses fifteen minutes every Thursday night at 8.15 to conduct his "Clearing House of Hope," on the WABC network.

- 3 P.M. EDT; 2 EST; 1 CT
Dreams Come True, WEAF WEEI WGY WLW
Musical Keys, WJZ WBZ WHAM KDKA WSM WFLA, 30 m.
Metropolitan Parade, WABC WCAU, 30 m.; WPG, 15 m.
University of Kentucky, WHAS, 30 m.
Sally and Sue, WOR
Jongleurs, WGN
"Sports Review," contests broadcast, WMCA, 2 h.
3.15 P.M. EDT; 2.15 EST; 1.15 CT
Upstater, quartet, WEAF WGY WSM
Silver Lining Hour, WEEI
Rainbow Court, WLW, songs, WPG
Piano Recital, WOR
Baseball, Chicago vs. New York, WGN, 2 h., 15 m.
3.30 P.M. EDT; 2.30 EST; 1.30 CT
Women's Radio Review, Maureen Orcutt, WEAF WEEI WGY, 30 m.
Roy Shield's Orchestra, WJZ WBZ WHAM WSM WFLA, 30 m. (KDKA, 15 m.)
"Bond of Friendship," WLW
Dancing by the Sea, WABC WCAU WHAS WPG
Baritone, WOR
Sports Review, concert artists, WMCA, 2 h.
Afternoon Concert, WNBX
3.45 P.M. EDT; 2.45 EST; 1.45 CT
State Federation Pennsylvania Women, KDKA
Dorothea Ponce, songs, WLW
Playboys, WABC WCAU WHAS WPG
Newark Orchestra, WOR
4 P.M. EDT; 3 P.M. EST; 2 CT
Chick Webb's Orchestra, WEAF WGY WFLA, 30 m. (WGY, 15 m.)
Stocks, Markets, WEEI
Betty and Bob, drama, WJZ WBZ WHAM KDKA WLW WSM
Chansonette, WABC WHAS, 30 m.
The Apple Knockers, WCAU
Travelogue, WPG, 30 m.
Afternoon Concert, WNBX
4.15 P.M. EDT; 3.15 EST; 2.15 CT
Songs, WEEI
Limey Bill, WGY
Jackie Heller, tenor, WJZ WBZ WHAM KDKA
Music by Divano, WLW
Melody Singer, WOR
Marion Smith, WNBX
4.30 P.M. EDT; 3.30 EST; 2.30 CT
Hazel Glenn, WEAF
Magic Strings, WEEI
John Sheehan, tenor, WGY
Business news, markets, KDKA
Chicago Symphony Orchestra, WJZ WBZ WHAM WSM WFLA, 1 h. (KDKA, 30 m. from 4.45) (WBZ, 30 m.)
Life of Mary Sothern, WLW
Rambles in Rhythm, WABC WHAS
Stocks, WPG
Irving Aaronson's Orchestra, WOR, 30 m.
N. H. Folk Tales, WNBX
4.45 P.M. EDT; 3.45 EST; 2.45 CT
Adventures on Mystery Island, WEAF
Dan McDonnell, basso, WEEI
Stocks, WGY
Business News, WLW
Round Towners, WABC WHAS
Steel Peer Gang, WPG, 30 m.
Poems, WNBX
5 P.M. EDT; 4 EST; 3 CT
"An Appraisal of America," WEAF WEEI WGY WSM, 30 m. (WGY at 5.15)
The Monitor Views the News, WBZ
Mary Alcott, torch singer, WLW
Tea Dansant, WABC WHAS
Variety, WOR
Variety, WNBX
5.15 P.M. EDT; 4.15 EST; 3.15 CT
Treasure Adventures of Donald Ayre, WEEI
Duke Dewey's Hickory Nuts, WBZ
Kiddies' Klub, KDKA
"Between the Book-Ends," WABC
Ray Sears, songs, WPG
Piano, WOR
5.30 P.M. EDT; 4.30 EST; 3.30 CT
Tales of Course, WEAF WEEI WSM
Lang Sisters, WGY
Singing Lady, WJZ WBZ WHAM KDKA WLW
Jack Armstrong, All-American Boy, WABC
Weather, Cecilia Norcross, WPG
Devotions, WHAS

- Motif Tips, WOR
Sally's Party, WMCA, 30 m.
Smilin' Ed McConnell, WNBX
5.45 P.M. EDT; 4.45 EST; 3.45 CT
Wilberforce Male Quartet, The Oleanders, WEAF WEEI WSM
Bradley Kincaid, WGY
Little Orphan Annie, WJZ WBZ KDKA WFLA
The Texans, WLW
Summary of Forest Hills tennis matches, WABC WCAU WPG WHAS
Tenor, piano, WOR
Chicago Symphony Orchestra, WGN, 45 m.
Tenor, piano, weather, WOR
Farm Flashes, WNBX
6 P.M. EDT; 5 EST; 4 CT
Tennis Championship resume, WEAF WLW WSM
The Evening Tattler, WEEI, 30 m.
Evening Brevities, WGY
Tom Coakley's Orchestra, WJZ WHAM WBAL, 30 m.
Joe and Bateese, WBZ
Dan and Sylvia, KDKA
Dixians, WFLA
Buck Rogers, WABC WCAU WHAS
Uncle Don, WOR, 30 m.
Ensemble, WMCA
Clarence Jackson, WMCA
6.15 P.M. EDT; 5.15 EST; 4.15 CT
Horatio Zito's music, WEAF WLW WSM
Piano Pals, WGY
Bill Williams, WBZ
Baseball, KDKA
Bobby Benson and Sunny Jim, WABC WCAU WCAU
Organ, WHAS, 30 m.
Bob Fallon's Music, WMCA
6.30 P.M. EDT; 5.30 EST; 4.30 CT
News, Mary Small, WEAF WSM WFLA
Baseball scores, current events, WEEI
News, races, WGY
O'Leary's Minstrels, news at 6.40, WJZ
Jack Armstrong, WLW
Time, weather, WBZ
Kings, queens of sport, KDKA
News and Charles Barnett's Orchestra, WABC
Special Program, WCAU
Sports, WOR
Round up, WMCA
Singing Lady, WGN
Sports, WNBX
6.45 P.M. EDT; 5.45 EST; 4.45 CT
Billy Batchelor, Raymond Knight, WEAF WGY
Sailor Riley, WEEI
Lowell Thomas, news, WJZ WBZ WHAM KDKA WLW
Radio Special, WFLA
Charles Barnett's Orchestra, WABC WHAS
Comedy Stars, WCAU
Boys' Club, WOR
Sports, WMCA
Little Orphan Annie, WGN
Political Talk, WNBX
7 P.M. EDT; 6 EST; 5 CT
Baseball Resume, WEAF
Sweetheart, WGY
Stamp Club, WJZ
News, drama, piano, WBZ
Stanley Metcalfe, news, KDKA
German Band, WLW
Sylvia Froos, WABC WCAU
Serenade, WHAS
Ford Frick, sports, WOR
Tenor, WMCA
Orchestra, WGN
7.15 P.M. EDT; 6.15 EST; 5.15 CT
Gene and Glenn, WEAF WEEI WGY
Freddy Martin's Orchestra, WJZ
ERA Choristers, WBZ, 30 m.
Organ, KDKA, 30 m.
Joe Emerson's Orchestra, WLW
Finances, WSM
Musical Memories, WFLA
Way side Cottage, WABC WCAU
Club Program, WHAS
Comedy Stars, WOR
Silver Voiced Lovers, WMCA
Recordings, WNBX
7.30 P.M. EDT; 6.30 EST; 5.30 CT
Danny Malone, WEAF WGY WSM
After Dinner Review, WEEI, 30 m.
Ed Lowry, WJZ WBAL WHAM
Bob Newhall, WLW
Cliff Edwards, WABC WCAU
Buck Rogers, WHAS
Harry Hershfield, WOR
Folk Songs, WMCA
Sports Reporter, WGN
7.45 P.M. EDT; 6.45 EST; 5.45 CT
Irene Bordon, WEAF WGY
Frank Buck, WJZ WBZ WHAM KDKA WLW WFLA
Boake Carter, WABC WCAU WHAS
World's Fair News, WGN
A. Cloyd Gill, news commentator, WMCA
8 P.M. EDT; 7 EST; 6 CT
Rudy Vallee and guest artists, WEAF WEEI WGY WLW WSM WFLA, 1 h.
Grits and Gravy, mountain sketch, WJZ WBZ KDKA, 30 m.
Kate Smith, WABC WCAU WPG WHAS
Little Symphony Orchestra, Philip James, conducting, WOR, 1 h.
Hal Kemp's Orchestra, WGN
Three Funsters, WMCA
Reveries, WNBX
8.15 P.M. EDT; 7.15 EST; 6.15 CT
Walter B. Pitkin, WABC WCAU WHAS
Voice of State Police, songs, WPG
5-Star Final, WMCA
WGN Orchestra, WGN
8.30 P.M. EDT; 7.30 EST; 6.30 CT
Charles Sears and Gale Page, songs, WJZ KDKA
Gleason L. Archer, WBZ
Leith Stevens Harmonies, WABC WCAU WPG, 30 m.
Harmonies, WHAS, 30 m.
Bridge talk, WGN
Munz Sisters, WMCA
8.45 P.M. EDT; 7.45 EST; 6.45 CT
Edmund Boucher, basso, WBZ
Al and Pete, KDKA
George Reid, WMCA
Bob Pacelli's Orchestra, WGN
9 P.M. EDT; 8 EST; 7 CT
Captain Henry's Show Boat, Arlene Jackson, WEAF WEEI WGY WSM WFLA, 1 h. (WLW from 9.30)
Death Valley Days, drama, WJZ WBZ WHAM KDKA WLW, 30 m.
Bar X Days and Nights, WABC WCAU WHAS WPG, 30 m.
Movie Broadcast, WPG
Piano, WOR
Soiree Musicale, WMCA, 30 m.
Lawrence Salerno's music, WGN, 30 m.
9.15 P.M. EDT; 8.15 EST; 7.15 CT
Baritone, WOR

Police Radio

Table with 3 columns: Station, Meters, Location. Lists various police stations and their frequencies and locations.

"Raffles", Modernized Radio Version Of Hornung's Short Stories

The Summer Theatrical Idea Is Used

By FLORENCE E. MARKS

Contrary to popular opinion, radio is not all gags and hot notes. Every now and then a bit of literary or dramatic work does seep through the sensitive mechanism of the little black microphone.

When it does, the brows of radio's GILBERT MILLERS start to knit, readers and writers cast about for material without end, and the wheels of sleek production begin counting off revolutions.

On March 22nd of this year an item of solid dramatic worth once again elbowed its way through the music racks, when COURTENAY SAVAGE, director of the CBS department of continuity and dramatics, secured the radio rights to E. W. HORNUNG's famous short stories unfolding the adventures of RAFFLES.

For some 40 years, ever since the embodiment of RAFFLES rolled from the pen of the British author, that character has been the acme of suavity, typifying the gentleman adventurer, the amateur cracksman—the ROBIN HOOD of Piccadilly and Mayfair.

He has cut his capers through magazine issue after magazine issue, and through a series of published volumes. He has remained cool in the face of impending disaster on several thousand feet of motion picture film, and has nipped in the bud the machinations of dastardly crime for the benefit of the gallery's applause. What more natural than that RAFFLES should be draped in ether and enthusiastically received by radio listeners.

Directed By Savage

With COURTENAY SAVAGE at the head, there are three other key men who have contributed to the success of RAFFLES' adventures on the Columbia network every Monday night at 8.30.

First of all, there is CHARLES TAZEWELL, adaptor of the radio script. He is a writer of short stories, a playwright, and the author of many of the radio plays that have been presented in the past by the Columbia Dramatic Guild.

TAZEWELL, always keeping at least three scripts ahead of actual production, has the initial work of presentation in his hand. With the original RAFFLES stories as a basis, TAZEWELL strips off the old-fashioned trappings of London 40 years ago, puts his characters into fast-moving cars and supplies them with the clipped speech of the present day.

The essential drama remains unchanged, but the modern idiom and the pace of radio must be applied to the plot of each successive episode. It is also TAZEWELL's job to moralize a bit, making certain that RAFFLES thwarts—but never commits—crime.

COURTENAY SAVAGE is the next man in the field. Actually, SAVAGE is the soul of the production. He is general supervisor of the entire show. He takes the cold script and makes cuts and revisions, tentative changes and play-worthy corrections.

He is in and out of the studio during rehearsals, jotting down pertinent notes on the way, and

"The Amateur Cracksman"



FREDERICK WORLOCK, radio actor, who takes the part of "RAFFLES" in the sketches of that name, which are heard over the WABC-Columbia network each Monday at 8.30 P. M.

ably contributing his veteran sense of the dramatic.

Prior to his work on the radio, SAVAGE was a figure in theatrical circles both here and abroad. As a playwright he has been and still is intensely active. As a producer he has launched the fortunes of several Broadway ventures. And as an actor he has more than once hurled a cockney or an Irish accent into the footlights. RAFFLES is but one of several radio productions into which he throws the breath of life.

Summer Theatre Technique

The third key man is KNOWLES ENTRIKIN, production director. He it was who engaged the services of FREDERICK WORLOCK, radio's personification of RAFFLES. ENTRIKIN, too, has a background of theatrical experience—notably as a director.

An inspiration of ENTRIKIN was to apply Summer theatre technique to the weekly series. He maintains a virtual stock company for the program—a group of 18 British-born actors and actresses—rotated according to the

demands of each episode. In the roster the names are found of such players as ARA GERALD, IRBY MARSHALL, KIRBY HAWKS and STEPHEN FOX, all of whom have trod the boards of Broadway.

In FREDERICK WORLOCK, the instinct of his Bond Street clothes, the cultured and exhilarating lift of his Westminster accent, the experience of curtain calls in the theatres of the world, are welded into a characterization that is crystal-clear.

WORLOCK is an experienced player.

No reading from script for him: WORLOCK acts before the microphone. He insists on receiving a copy of each script not less than 36 hours in advance of broadcast. At home, he studies each episode for shading and nuances in RAFFLES' character and action.

Before the engagement of WORLOCK, the air presentation of RAFFLES was just a good idea.

Careful Rehearsal

There is no prodigal use of hours for-rehearsing the episodes

of RAFFLES. Every minute is made to count. Carefully worked out in advance, the actors are called for the first informal reading of lines on the morning of the day of broadcast.

At 11 o'clock, for one hour, the actors gather in SAVAGE's office. Directions are inserted, more cuts and revisions are made, and voice levels are suggested by ENTRIKIN. At the conclusion of the reading, SAVAGE and ENTRIKIN do whatever rewriting is necessary.

From 3.30 until 6 o'clock a studio rehearsal—actors, mikes and sound machines—is called. Two sound experts are required for the scripts, written in the motion picture manner of fade-outs and fade-ins for scene changes, contain many sound transitions. These transitions and the approach to them are rehearsed many times, for mike position and timing.

Through each transition, Director ENTRIKIN holds his breath until his hand falls on the perfectly-timed cue. He breathes again.

At the conclusion of this rehearsal a lay-off is declared until 7.30 P. M., when the dress rehearsal takes place. This short free time is the period of "RAFFLES" WORLOCK's greatest activity.

Appearing concurrently in the Broadway success, "Dodsworth," WORLOCK must dash to the theatre, put on his stage make-up, eat a sandwich, and dash back to the studio with his shirt open and minus his tie, he never has been late returning.

With stop-watch and typewriter, the finishing touches are applied to the script. Quiet follows until the red second hand

The Director



COURTENAY SAVAGE, director of dramatics and continuity for the Columbia Broadcasting System, under whose personal direction "RAFFLES" is produced.

hits 8.30 P. M. "on the nose."

WILLIAM BRENTON takes his stance at the microphone, announces—"Presenting Raffles!—gentleman adventurer! . . ."

The program is on the air.

"Roses and Drums" to Return

"Roses and Drums," the glamorous drama of Civil War days, will begin its third year on the air over the NBC-WJZ network on Sunday, September 9, at 5 P. M. The new series will deal with the fourth year of the war when GRANT settled down to the siege before Petersburg.

Short Wave Directory

Station	Metres	Location	Time (E.D.T.)
GSH	13.97	Daventry, England	7-9.30 A. M.
FYA	19.68	Pontoise, France	8.30 A. M. to Noon
DJB	19.73	Zeesen, Germany	9 A. M. to Noon
GSF	19.82	Daventry, England	9.45 A. M. to Noon
HVJ	19.84	Vatican City, Rome	6-6.15 A. M. (Sat. 11)
RNE	25.00	Moscow, U. S. S. R.	7-8, 11-12 A. M. (Sun.)
FYA	25.20	Pontoise, France	12.15 to 7 P. M.
GSE	25.28	Daventry, England	10 A. M.-1.45 P. M.
2RO	25.40	Rome, Italy	2.15-7 P. M., irregularly
DJD	25.51	Zeesen, Germany	6 to 11.30 P. M.
GSD	25.53	Daventry, England	2 to 6.30; 7 to 9 P. M.
FYA	25.63	Pontoise, France	7.15 to 10 P. M.; 11 P. M. to 1 A. M.
LSX	28.98	Buenos Aires, Byrd relays	9-11 P. M., Tues., Wed.
EAQ	30.40	Madrid, Spain	6.15-8 P. M. (Sat. 1-3)
CT1AA	31.25	Lisbon, Portugal	4.30-7 P. M., Tues., Fri.
HBL	31.27	Geneva, Switzerland	6.30-7.15 P. M., Sat.
VK2ME	31.29	Sydney, Australia	1-11 A. M., Sun.
VK3LR	31.30	Melbourne, Australia	4 to 9 A. M.
DJA	31.38	Zeesen, Germany	6-8.30 P. M.
VK3ME	31.55	Melbourne, Australia	6 to 7.30 A. M., Wed.; 6 to 8 A. M., Sat.
GSB	31.55	Daventry, England	2-6.30 P. M.
CNR	37.33	Rabat, Morocco	3.50-6 P. M., Sun.
HBP	38.47	Geneva, Switzerland	6.30 to 7.15 P. M., Sat.
HJ3ABD	40.55	Bogota, Colombia	7.30 P. M. to Midnight
HC2RL	45.00	Guayaquil, Ecuador	6.45 to 9 P. M., Sun.; 10.15 P. M. to 12.45 A. M., Tues.
PRADO	45.31	Riobamba, Ecuador	10 P. M. to 12.40 A. M. Thurs.
HJ1ABB	46.51	Barranquilla, Colombia	8-11 P. M.
YV3RC	48.78	Caracas, Venezuela	5.30 to 10.30 P. M.
	48.00	Army Aircraft	Evening—irregularly
PK1WK	49.02	Bandoeng, Java	6-7.30 A. M.
YV2RC	49.08	Caracas, Venezuela	6.15 to 11 P. M.
YV5RMO	49.39	Maracaibo, Venezuela	7.30-11 P. M.
CP5	49.34	La Paz, Bolivia	7.50-11 P. M., irreg.
HIX	49.50	Santo Domingo	9.10-11.10, Tues., Fri.
DJC	49.83	Zeesen, Germany	9.45 to 11.30 P. M.
XEBT	49.87	Mexico City	7 P. M. to 2 A. M.
RV59	50.00	Moscow, U. S. S. R.	3-7 P. M.
HJ4ABA	51.49	Colombia, S. A.	2-3 P. M.
HCJB	73.00	Quito, Ecuador	8.30-10.45 P. M.
	67.87 to 73.17	All Ships	Heard irregularly
RV15	70.65	Kharbarovsk, U. S. S. R.	2-10 A. M.
KFX	45.34, 31.57, 25.36, 23.19, 25, 17, 14 and 33	Byrd Expedition at Little America	

NOTE: All times given are week-day schedules, unless indicated otherwise. The stations listed are regular broadcasters at the times indicated. Other stations which you may hear or which are used for international telephone have been purposely omitted.

Russian Program Heard

(Continued from Page 3)

meters with 20 kilowatts in the aerial. Throughout the year they offer European fans one of the best short wave signals in that part of the world. Here they are frequently heard after 4 P. M. during the Fall, Winter and Spring.

In the Summer, due to the high wave and long daylight hours, RV59's spot is mostly a dead one to American listeners.

Last week marked the return of an old favorite which will probably be heard more regularly now as the Summer wends its

way out.

A letter from Radio Centre, Moscow headquarters of Russian broadcasting, states that RV59 operates between 2 and 6 P. M. EST. Sessions in English, consisting generally of scientific talks and propaganda, are radiated each Sunday, Monday, Wednesday and Friday between 4 and 5 P. M. On Sundays three daylight programs are flashed to the world via 25-meter RNE at the following times: 10 to 11 P. M. (Saturday, New York time) and on Sundays between 6 to 7 and 10 to 11 A. M.

Friday, September 7 - National Tennis on NBC-WEAF, 4.30 P.M.

Highlights

- P.M. 6.00—H. V. Kaltenborn, CBS-WABC 7.30—Grace Hayes, NBC-WJZ 8.00—Jessica Dragonette, NBC-WEAF 9.00—Frank Munn, Vivienne Segal, NBC-WEAF 9.30—Little Symphony Orchestra, ABS-WMCA 10.30—Jack Benny, NBC-WEAF Isidor Philipp, pianist, NBC-WJZ

(All programs are listed in Eastern Daylight Saving Time, Eastern Standard Time is one hour earlier; Central Time is two hours earlier.)

- 7.30 A.M. EDT; 6.30 EST; 5.30 CT Yoichi Hiraoka, xylophonist, WJZ McCormick Fiddlers, WLW Organ Reveille, WABC, 30 m. 7.45 A.M. EDT; 6.45 EST; 5.45 CT Pollock and Lawnhurst, WEA WGY Melody Race, WEEL Jolly Bill and Jane, WJZ Salon Musicale, WABC, 45 m. 8 A.M. EDT; 7 EST; 6 CT Organ, WEA, 30 m. Musical Clock, WGY, 30 m. Devotions, WJZ KDKA Prayer, WLW Ambassadors, WABC, 30 m. Playground Echoes, WPG 8.15 A.M. EDT; 7.15 EST; 6.15 CT Landt Trio and White, WJZ WBZ KDKA Devotions, WLW Health Exercises, WPG News, WNBX 8.30 A.M. EDT; 7.30 EST; 6.30 CT Cheerio, WEA WEEI WGY WLW, 30 m. Organ, WPG WSM Lew White at Dual organ, WJZ KDKA, 30 m., WBZ, 15 m. (WHAM from 8.45) Musical Clock, WFLA Piano, WABC Organ, WPG, 30 m. 8.45 A.M. EDT; 7.45 EST; 6.45 CT Delmore Brothers, WSM Exercises, WFLA Connie Gates, WABC 9 A.M. EDT; 8 EST; 7 CT Herman and Banta, WEA Melody Moments, WGY Breakfast Club, WJZ WBZ WBAL WHAM 7 h. (WFLA, 45 m.) (WSM from 9.15) (KDKA, 30 m.) Salt and Peanuts, WLW Devotion, WSM The Song Reporter, Dick Newton, WABC WCAU Devotions, WHAS, 30 m. Early Birds, WNBX 9.15 A.M. EDT; 8.15 EST; 7.15 CT Don Hall Trio, WEA WEEI WGY WLW Metropolitan Parade, WABC, 45 m. (WPG from 9.30) (WHAS WCAU from 9.45) 9.30 A.M. EDT; 8.30 EST; 7.30 CT Taters and Mule, WEA WEEI Billy Rose, tenor, WGY Joe Emerson, hymns, WLW Wildcats, WHAS 9.45 A.M. EDT; 8.45 EST; 7.45 CT Oswaldo Mazzuchi, cellist, WEA WEEI WGY WLW Work-a-Day Thoughts, KDKA Bob Atcher, WHAS 10 A.M. EDT; 9 EST; 8 CT Breen and de Rose, WEA WEEI The Southerners, WGY Edward MacHugh, gospel singer, WJZ WBZ KDKA WSM WFLA Suzanne Littleford, WLW Emily Post, speaker, Sydney Nesbitt, baritone, Muriel Pollack, WOR, 30 m. Madison Singers, WABC WCAU WHAS Home Hour (news at 10.30) WPG, 1 h. What's on Today, WNBX 10.15 A.M. EDT; 9.15 EST; 8.15 CT Clara, Lu 'n' Em, WEA WEEI WGY WLW Hazel Arth, WJZ WBZ WHAM Sammy Fuller, KDKA Birthday Club, WFLA Bill and Ginger, WABC WCAU 10.30 A.M. EDT; 9.30 EST; 8.30 CT News and Joe White, tenor, WEA WSM Organ, WEEL Market Basket, WGY Today's Children, sketch, WJZ WBZ WBAL KDKA WFLA Mail Bag, WLW Markets, weather, WGN News and Carolyn Gray, pianist, WABC WCAU WHAS Matinee Melodies, WNBX 10.45 A.M. EDT; 9.45 EST; 8.45 CT Betty Crocker, cooking talk, WEA WEEI WGY WLW WFLA News, Radio Kitchen, WJZ KDKA WSM News, musicale, WBZ News, Three Flats, WABC WCAU Sanders Sisters, WHAS Lovely Ladies, WGN Story, WNBX 11 A.M. EDT; 10 EST; 9 CT Morning Parade, WEA WEEI WGY, 1 h. (WLW, 15 m.) Shut-in Hour, U. S. Marine Band, WJZ WBZ KDKA WSM, 1 h. Nora Beck Thumann, songs, WLW Cooking Close Ups, WABC WCAU Studio Program, WHAS Farm Talk, WPG Household Chat, WNBX 11.15 A.M. EDT; 10.15 EST; 9.15 CT News, stocks, WLW Morning Topics, WFLA Rambles in Rhythm, WABC WCAU Italian Program, WPG Dolly Dean, WHAS Town Crier, WNBX

- 11.30 A.M. EDT; 10.30 EST; 9.30 CT Ponce Sisters, songs, WLW Do, Re, Mi Trio, WABC WPG Hope Vernon, songs, WMCA Hawaiian Program, WNBX 11.45 A.M. EDT; 10.45 EST; 9.45 CT Martha and Hal, WGY Painted Dreams, WLW Cadets, music, WABC "Dramatic Art," WPG Foster Brooks, WHAS Poem, WNBX 12 N. EDT; 11 A.M. EST; 10 CT Piano recital, WEA WEEI WGY Fields and Hall, WJZ WHAM KDKA Weather, Monitor Views the News, WBZ Dan and Sylvia, KDKA Ward, Muzzy, piano duo, WLW Betty Barthell, WABC WCAU WHAS Home Sweet Home, WPG Rod Arkell, WOR Luncheon Musicale, WMCA, 30 m. Tom, Dick and Harry, WGN Recordings, WNBX 12.15 P.M. EDT; 11.15 A.M. EST; 10.15 CT Honeyboy and Sassafras, WEA WEEI Martha and Hal, WGY Charles Sears, tenor, WJZ KDKA WSM WFLA Time, weather, temperature, WBZ Highlights, WLW Variety, WOR Among Our Souvenirs, WABC WCAU WPG WHAS Len Salvo, organ, WGN 12.30 P.M. EDT; 11.30 A.M. EST; 10.30 CT Merry Madcaps, WEA WLW, 30 m., Stocks, Markets, WEEL Piano Pals, WGY Vic and Sade, WJZ WBZ WHAM KDKA WSM WFLA Al Kavelin's Orchestra, WABC WHAS WCAU, 30 m.; WPG from 12.45 Stocks, WMCA Scott Fisher's Orchestra, WOR, 30 m. Markets, basso, WGN 12.45 P.M. EDT; 11.45 A.M. EST; 10.45 CT Cabot and Castillo, WEEL, 30 m. Vagabonds, WGY Words and Music, WJZ WHAM 88 Notes and a Pair of Pipes, WBZ William Penn music, KDKA Luncheon Musicale, WMCA, 30 m. Popular Rhythm, WGN Theatre program, WNBX 1 P.M. EDT; 12 N. EST; 11 A.M. CT Markets, weather, WEA Bob Albright, WLW Jan Brunoso's Ensemble, WGY Weather and N. E. Agricultural Report, WBC Markets, KDKA Emil Velazco's Orchestra, WABC WCAU, 30 m. Hotel Morton music, WPG, 30 m. Dance Tunes, WOR, 30 m. Mid-Day Service, WGN, 30 m. Vermonters, WNBX 1.15 P.M. EDT; 12.15 EST; 11.15 A.M. CT Jan Brunoso's music, WEA WEEI Radio Gang, WGY Honorable Archie and Frank, WJZ WBZ KDKA Markets, weather, WLW Mirror Reflections, WMCA 1.30 P.M. EDT; 12.30 EST; 11.30 A.M. CT Dick Fidler's Music, WEA, 30 m. N. E. Kitchen, WEEL Farm Program, WGY, 30 m. National Farm and Home Hour, WJZ WBZ WHAM KDKA WLW WSM WFLA, 1 h. Buddy Fisher's Orchestra, WABC WCAU WHAS, 30 m. (WPG, 15 m.) Welfare Talk, WMCA Theatre Club, WOR Markets, music, WGN Chiropractic program, WNB X 1.45 P.M. EDT; 12.45 EST; 11.45 A.M. CT Child Education talk, WPG Diana Marlow, soprano, WOR Sports, WMCA "Rube Appleberry," WGN 2 P.M. EDT; 1 EST; 12 N. CT Airbreaks, variety, WEA WEEI, 30 m. Antoinette Halstead, WGY The Eton Boys, WABC WCAU Weather, stocks, WHAS String Trio, WOR Tenor, WMCA Organ, WGN 2.15 P.M. EDT; 1.15 EST; 12.15 CT Household Chat, WGY Johnny Augustine's music, WABC WCAU Wildcats, WHAS Piano, WOR Drama, WMCA Romance of Helen Trent, WGN 2.30 P.M. EDT; 1.30 EST; 12.30 CT The Sizzlers, WEA WEEI Albany on Parade, WGY Home Sweet Home, WJZ WHAM Home Forum Cooking School, WBZ, 30 m. Home Forum, KDKA, 30 m. Gene Burchell's Orchestra, WLW Markets, WSM Leah Covert, WFLA Memory's Garden, WABC WCAU, 30 m.; WHAS, 15 m. Martha Deane, WOR, 30 m. Texas Cowboys, WMCA, 30 m. Century of Progress music, WGN 2.45 P.M. EDT; 1.45 EST; 12.45 CT Ma Perkins, WEA WGY WLW WSM Alden Edkins, bass, WJZ WHAM WSM WFLA Agricultural College, WHAS Palmer House Ensemble, WGN 3 P.M. EDT; 2 EST; 1 CT Wandering Minstrel, WEA WEEI WGY WSM WLW, 30 m. Jackie Heller, tenor, WJZ WBZ WHAM KDKA WSM WFLA Semifinals, tennis singles championships, WABC WCAU WPG, 1 h. University of Kentucky, WHAS, 30 m. Ensemble, WOR, 30 m. "Sports Review," contests broadcast, WMCA, 2 h. Jongleurs, WGN 3.15 P.M. EDT; 2.15 EST; 1.15 CT Visits to Foreign Villages at Century of Progress, WJZ KDKA WHAM WFLA Books and Authors, WBZ Baseball, Chicago vs. New York, WGN, 2 h., 30 m.

Cinderella



CAROL DYES' career reads like a story book. She became an operatic and radio star after spending the early part of her life as a stenographer. She is heard on Fridays at 10 P. M. in the "Spotlight Revue" over the WABC network.

- 3.30 P.M. EDT; 2.30 EST; 1.30 CT Woman's Radio Review, WEA WEEI WGY Motion Picture Association Program, WJZ WBZ WHAM KDKA WLW WSM WFLA, 30 m. Garden Club, WOR Sports Review, Concert Artists, WMCA, 2 h. Concert, WNBX 3.45 P.M. EDT; 2.45 EST; 1.45 CT Munz Sisters, harmony, WOR 4 P.M. EDT; 3 P.M. EST; 2 CT Your Lover, WEA WFLA WSM Vagabonds, WGY Betty and Bob, sketch, WJZ WBZ WHAM KDKA WLW WSM String ensemble, WSM Lazy Bill Huggins, WABC WHAS Tea Time Topics, WPG, 30 m. The Apple Knockers, WCAU Health Talk, WOR 4.15 P.M. EDT; 3.15 EST; 2.15 CT Nellie Revell interviews John Herrick, WEA WEEI "Books," Levere Fuller, WGY Singing Stranger, WJZ WBZ WHAM KDKA WSM WFLA Music by Divano, WLW Rhythm Bandbox, WABC WHAS WCAU Hal Beckett, organist, WOR Story Book Lady, WNBX 4.30 P.M. EDT; 3.30 EST; 2.30 CT National Tennis Finals, WEA WEEI WSM Soloist, WGY Business news, markets, KDKA Life of Mary Sothern, WLW U. S. Army Band, WABC WHAS WCAU, 30 m. (WPG from 4.45) Stocks, WPG Irving Aaronson's Orchestra, WOR, 30 m. 4.45 P.M. EDT; 3.45 EST; 2.45 CT Lady Next Door, WEA Stocks, WGY Women's Clubs' Federation, WJZ WHAM WSM Concert, Edwin Otis, baritone, WBZ Arm Chair Driver, KDKA William Hargrave, baritone, WOR Chat, WNBX 5 P.M. EDT; 4 EST; 3 CT Peg La Centra, WEA WSM Bradley Kincaid, WGY Chick Webb's Orchestra, WJZ, 30 m. (KDKA 15 m.) The Monitor Views the News, WBZ Jane Yahrns, KDKA Music, WSM Three Star Voices, WLW, 30 m. Frank Dailey's Orchestra, WABC WHAS, 30 m. Safety Talk, WPG "Whirlwind Pianist," WOR Royals, WNBX 5.15 P.M. EDT; 4.15 EST; 3.15 CT Dandies of Yesterday, WEA WEEI WSM Vagabonds, WGY Skipper Jim's Joy Ship, WBZ Kiddies' Klub, KDKA Devotions, WHAS "Cocktail Hour," WOR 5.30 P.M. EDT; 4.30 EST; 3.30 CT William Lundell, WEA WEEI WSM The Singing Lady, WJZ WBZ WHAM KDKA WLW Jack Armstrong, All-American Boy, WABC WCAU Weather, Nick Nickerson, WPG Christine Ridge, WHAS Robert Reud, WOR Sally's Party, WMCA, 30 m. Farm Flashes, WNBX 5.45 P.M. EDT; 4.45 EST; 3.45 CT The Texans, WLW Round Towners, WABC WCAU WPG Songs, weather, WOR Chicago Symphony Orchestra, WGN, 45 m. "Mikado," Gems, WNBX 6 P.M. EDT; 5 EST; 4 CT Al Pearce and his Gang, WEA WLW WSM WFLA, 30 m.; WEA, 15 m. Evening Tattler, WEEL, 30 m. Evening Brevities, WGY Jack Berger's Orchestra, WJZ WHAM, 30 m. (WBZ, 15 m.) Dan and Sylvia, KDKA H. V. Kaltenborn, WABC Uncle Don, WOR, 30 m. Boys' Club, WMCA John Angell, WNBX

- 6.15 P.M. EDT; 5.15 EST; 4.15 CT Joe and Eddie, WGY Bill Williams, WBZ Baseball, KDKA Bobby Benson and Sunny Jim, WABC WCAU Organ, WHAS, 30 m. Orchestra, WMCA 6.30 P.M. EDT; 5.30 EST; 4.30 CT News, current events, WEEL News and Phil Emmerton's Orchestra, WGY, 30 m. Dorothy Page, songs; news at 6.40, WJZ Temperature, weather, WBZ Comedy Stars, KDKA Jack Armstrong, WLW News and Blue Ridge Mountaineers, WABC Jim Burgess, WCAU Cowboy Tom, WMCA Singing Lady, WGN Sports, WNBX 6.45 P.M. EDT; 5.45 EST; 4.45 CT Billy Batchelor, Raymond Knight, WEA WEEI WGY Lowell Thomas, news comments, WJZ WBZ WHAM KDKA WLW WFLA Semi-finals, Women's National Tennis Championships from Forest Hills, WABC Buddy Welcome's Orchestra, WCAU "Real Life Drama," WOR Little Orphan Annie, WGN Sports, WMCA Political Talk, WNBX 7 P.M. EDT; 6 EST; 5 CT Baseball Resume, WEA Gould and Shelter, WEEL WFLA Jules Lande, violinist, WGY Johnny Johnson's Orchestra, WJZ, 30 m. (WBZ KDKA at 7.15) News, Drama program, WBZ Piano, news, drama, KDKA Virgilio Marucci's Orchestra, WLW, 30 m. Piano, WSM, 30 m. Robbins' Orchestra, WABC WCAU Serenade, WHAS Ford Frick, sports, WOR Gloria Grafton, actress, WMCA WGN Orchestra, WGN Sports, WNBX 7.15 P.M. EDT; 6.15 EST; 5.15 CT Gene and Glenn, WEA WEEI WGY WFLA Fox Fur Trappers, WABC Sam Robbins' Orchestra, WCAU Club Program, WHAS Front Page Drama, WOR Ensemble, WMCA Palmer House Ensemble, WGN Ted Massey, WNBX 7.30 P.M. EDT; 6.30 EST; 5.30 CT Pickens Sisters, WEA After Dinner Revue, WEEL Marion Williams, Roger Sweet, songs, WGY Grace Hayes, contralto, WJZ WBZ WSM Nancy Martin, KDKA Bob Newhall, WLW Melody's Garden, WFLA Paul Keast, baritone, WABC WCAU WHAS The O'Neills, WOR News, Heat Waves, WMCA Sports talk, WGN John Angell, WNBX, 30 m. 7.45 P.M. EDT; 6.45 EST; 5.45 CT Sisters of the Skill, WEA WGY Political Talk, WEEL Frank Buck, WJZ WBZ WHAM KDKA WBAL WFLA Melody Masters, WLW Boake Carter, WABC WCAU WHAS "Less, the Furnace Man," WOR A. Cloyd Gill, news commentator, WMCA World's Fair Reporter, WGN 8 P.M. EDT; 7 EST; 6 CT Cities Service Concert, Jessica Dragonette, piano duo, WEA WEEI, 1 h.; WGY 30 m. Musical Keys, WJZ Gene Burchell's music, WLW Nap and Dee, WSM Kate Smith, WABC WCAU WHAS Chalfonte-Haddon Hall Trio, WPG, 1 h. Al and Lee Reiser, Ben Selvin's Orchestra, WOR, 30 m. Three Little Funsters, WMCA Hal Kemp's music, WGN 8.15 P.M. EDT; 7.15 EST; 6.15 CT Prairie Symphony, WLW String Music, WSM, 30 m. "Guilty or Not Guilty?" WFLA Edwin C. Hill, "The Human Side of the News," WABC WCAU WHAS 5-Star Final, WMCA Orchestra, WGN 8.30 P.M. EDT; 7.30 EST; 6.30 CT Farm Forum, WGY, 30 m. Eugene Fay, baritone, WJZ ERA Program, WBZ, 30 m. Station Orchestra, KDKA, 30 m. Unbroken Melodies, WLW True Story Court, WABC WCAU, WPG, Organ, WHAS Varieties of 1934, WOR, 30 m. Lone Ranger, WGN U. S. Army Band, WMCA, 30 m. 8.45 P.M. EDT; 7.45 EST; 6.45 CT The King's Guard, quartet, WJZ WHAM WBAL WSM WFLA The Guardsmen, WBZ Skit, WLW Sam, Gil and Louie, WHAS "More Than News," WMCA 9 P.M. EDT; 8 EST; 7 CT Waltz Time, Frank Munn and Vivienne Segal, Abe Lyman's Orchestra, WEA WEEI WGY WLW, 30 m.

- Phil Harris Orchestra, Leah Ray, WJZ WBZ WHAM WBAI, KDKA WSM, 30 m. Voice of Friendship, WHAS California Melodies, WABC WCAU WPG, 30 m. Continental Cafe, WMCA Orchestra, WGN 9.15 P.M. EDT; 8.15 EST; 7.15 CT "The Friend of the Family," WABC WHAS Comedy Stars, WGN 9.30 P.M. EDT; 8.30 EST; 7.30 CT One Night Stands, Pick and Pat, blackface comedians, WEA WGY, 30 m. Variety, WEEL Floyd Gibbons, WJZ WBZ WHAM KDKA WSM WFLA, 30 m. Larry Lee's Orchestra, WLW, 30 m. In the Modern Manner, Johnny Green, WABC WCAU WHAS, 30 m. Hotel Traymore Concert, Orchestra, WPG, 30 m. Little Symphony Orchestra, WMCA, 1 h. Norman Brokenshire's Orchestra, WOR, 30 m. Wayne King's Orchestra, WGN 9.45 P.M. EDT; 8.45 EST; 7.45 CT Jane Froman, Hayton's Orchestra, WLW Jan Garber's Orchestra, WGN 10 P.M. EDT; 9 EST; 8 CT The First Nighter, June Meredith, Don Ameche, WEA WEEI WGY WSM, 30 m. Mario Cozzi, baritone, WJZ WBZ KDKA, 30 m. Castle Farm Orchestra, WLW "Spotlight Revue," Stoopnagle and Budd, Frank Crumit, Carol Deis, WABC WCAU WHAS, 45 m. Auditorium dance, Orchestra, WPG, 30 m. "Hysterical History," WOR News, WGN 10.15 P.M. EDT; 9.15 EST; 8.15 CT Henry Thies and Pepsters, WLW Current Events, WOR Dream Ship, WGN 10.30 P.M. EDT; 9.30 EST; 8.30 CT Jack Benny, Mary Livingstone, Frank Parker, tenor, and Don Bestor's Orchestra, WEA WEEI WGY WLW WSM WFLA, 30 m. Isador Philipp, concert pianist, composer, Oswaldo Mazzuchi, cellist, "Sonata for cello and piano," Saint Saens, WJZ, 30 m. South Jersey Pioneers, WPG Eli Dantzig's music, WOR, 30 m. Gypsy Ensemble, WMCA Attilio Baggio, tenor, WGN, 30 m. 10.45 P.M. EDT; 9.45 EST; 8.45 CT Carlile and London and Warwick Sisters, WABC WCAU WPG WHAS Orchestras, WMCA, 3 h., 15 m. 11 P.M. EDT; 10 EST; 9 CT George R. Holmes, Washington Bureau, International News Service, WEA WFLA E. B. Rideout, WEEL Marshall Van Pool's Orchestra, WGY, 30 m. Charlie Davis' Orchestra, WJZ, 30 m., WBZ KDKA from 11.15 Time, weather, "Song Painter," WBZ KDKA "Unsolved Mysteries," WLW, 30 m. Frank Buck, WSM Edith Murray, songs, WABC WHAS WCAU Weather, Bert Block's Orchestra, WOR, 30 m. June Provines, WGN 11.15 P.M. EDT; 10.15 EST; 9.15 CT George Sterney's Orchestra, WEA WEEI Gene and Glenn, WSM Isham Jones' Orchestra, WABC WCAU WPG WHAS, 30 m. Lum and Abner, WGN 11.30 P.M. EDT; 10.30 EST; 9.30 CT Weather, Freddie Martin's Orchestra, WEA WEEI WFLA, 30 m. Ray Nichols, WGY, 30 m. Freddie Berren's music, WJZ WBZ WHAM, 30 m. William Penn Orchestra, KDKA, 30 m. Roamios' Orchestra, WLW, 30 m. String Music, WSM Eddie Lane's Orchestra, WOR, 30 m. Wayne King's Orchestra, WGN 11.45 P.M. EDT; 10.45 EST; 9.45 CT String Music, WSM Charles Barnett's Orchestra, WABC WPG Jan Savitt's Music, WCAU Jan Garber's Orchestra, WGN 12 M. EDT; 11 P.M. EST; 10 CT Dream Singer and Harold Stern's Orchestra, WEA WEEI WGY, 30 m. Eddie Duchin's Orchestra, WJZ WBZ WHAM KDKA WSM WFLA WLW, 30 m. Leon Belasco's Orchestra, WABC WCAU WPG WHAS Orchestras, WGN, 1 h. Roger Van Duzer's Orchestra, WOR 12.15 A.M. EDT; 11.15 P.M. EST; 10.15 CT Harry Sosnik's Orchestra, WABC WCAU WHAS Spangletights and Kumquat, WPG Ted Weems' Orchestra, WGN 12.30 A.M. EDT; 11.30 P.M. EST; 10.30 CT Gray Gordon's Orchestra, WEA WEEI WGY, 30 m. Paul Pendarvis' Orchestra, WJZ WBZ WHAM KDKA WSM, 30 m. Dancing by the Sea, WABC WCAU WHAS WPG, 30 m. Johnny Hamp's Orchestra, WGN

POWERS' Asthma Relief



has been a boon to the afflicted for over 50 years. 6 oz. 60c - 18 oz. \$1.20.

Buy at Your Local Druggist's or Write Direct E. C. POWERS COMPANY Box 62, Dorchester Center Station, Boston

Reflections

By Diana Herbert

The MICROPHONE'S Fashion Observer

SPORTS CLOTHES, both those of the moment and those destined for later on, are full of pattern. Stripes, checks, plaids, chevrons, as well as innumerable small designs depending on combinations of various threads, hairs, metals and cellophanes. There is no such thing as a plain, smooth-surfaced, solid-colored material in the sports world. Even jersey has acquired metal threads or a nubby surface!

TEXTURE is of foremost importance. Ribs, bumps, irregularities of all sorts and descriptions crop up to contribute "textural interest" which has become a byword of the new mode, both dressy and sporting.

CONNIE BOSWELL, one of the "irrepressible BOSWELL sisters" wears a classic sports suit, belted jacket, patch pockets, simple skirt and ascot scarf, all carried out in one of the new materials which is both striped and ribbed and hence doubly smart.

OLGA ALBANI'S dark beauty is distinguished in Mexican stripes on an interesting crinkled silk. The dress is severely simple with high "cowboy" neckline, a square yoke, neatly buttoned pockets and streamline skirt.

DRESSY MATERIALS show the same tendencies as those destined for informal wear. Satins appear overlaid with long, hairy threads; velvets blossom forth in a variety of novel weaves—shaggy, hairy, metalized, cloque, chiffon-striped, cellophane-woven—The imagination of the fabric makers seems inexhaustible!

With all this emphasis on materials it naturally follows that the cut must be nothing short of perfection. It is this combination of faultless line and unique materials that produces the particular brand of chic which will characterize the season 1934-35.

Lifeboat Race to be Broadcast

The lifeboat crews of 15 or more ships of many nations will fight their way down the Hudson River in New York Harbor on Labor Day, September 3, in the annual International Lifeboat Race.

The race will be broadcast over the NBC-WJZ network at 11.30 A. M.

Every ship then in port will enter a boat in the contest for the ROBERT L. HAGUE Trophy, which will be presented to the winning crew by Postmaster General JAMES A. FARLEY.

This and That

(Continued from Page 1)

and book written specifically for radio production.

Otherwise, it would seem to be much as it has been in the past. The same comedians—ED WYNN, JACK PEARL, BURNS and ALLEN, STOOPNAGLE and BUDD—the same singers and the same popular orchestras will be with us again.

There are many other comedians of whom radio has not yet made extensive use. There are, for example, the unmatched BEATRICE LILLIE, BERT LAHR (whose improvement as a comic warrants another chance on the air), and a good number of others.

Assuredly some novelty must be introduced soon if radio is to maintain its great popularity.

Winner of Audition Confesses

(Continued from Page 1)

ailment would clear before I reached New York."

"You can realize my perplexity when I arrived in New York with my mouth only slightly better than when I left Chicago," continued the contest winner. "One hour before the broadcast I went to the hotel druggist and purchased something that relieved me considerably, although not completely."

Miss WILLIAMS described the contest as one of the fairest she had ever entered. Each contestant drew a number, then they were ushered into a room containing a microphone. The microphone was attached to a loudspeaker in the judges' room.

Miss WILLIAMS sang "The Moon Was Yellow," "Love in Bloom," and "The Better to Love You, My Dear." And although she had never read any script over the radio, she received the full credits for her reading to win the contest.

Although she has been singing on the Middle-Western radio programs for the past four years, she has never held a steady position nor has she ever held a full time commercial contract.

Miss WILLIAMS was an opera singer when she was 20 years of age. Until four months ago her repertoire consisted of operatic arias. She knows only 25 popular melodies now.

The judges included FAY BAINTER and FREDERICK WORLOCK, stars of the legitimate stage; GENE BUCK, president of the American Society of Composers, Authors and Publishers; PEGGY WOOD, star of the musical stage; L. WARD WHELLOCK, and DIANA BOURBON, casting director of "Hollywood Hotel."

An Ambition Thwarted



BERT PARKS, Columbia announcer, long has wanted to become a BING CROSBY or a MORTON DOWNEY and he has been hounding MARK WARNOW to give him an audition. Mark didn't get around to it until the other day. When he did, he was impressed by the similarity of BERT's voice to that of DICK POWELL on the "45 Minutes in Hollywood" hour. PARKS got the job, but still regrets he is not BING CROSBY.

Harmonist



CONNIE BOSWELL, one of the BOSWELL Sisters, harmony group, who is a soloist in her own right and is heard frequently on the CBS network.

Q. and also A.

Q. Did JESSICA DRAGONETTE make a moving picture this Summer? If so, when and where?

G. N. L., Towson, Md.

A. JESSICA DRAGONETTE did not make a movie this Summer. She has never been in the movies, although there was some talk of it last Spring.

Q. Is BEATRICE LILLIE going on the air regularly?

R. M., Newark, N. J.

A. She auditioned for a show with JOHNNY GREEN's orchestra, but the program was turned down by the sponsors.

Q. Are the SHERLOCK HOLMES dramas to return to the air this Fall?

S. G. T., Darien, Conn.

A. It is probable, but not certain, that they will return to radio late in the Fall.

"Colonel" Fred Hoey

FRED HOEY, ace baseball announcer of the Yankee network, is going to be made a Kentucky "Colonel." He formally will be appointed by Governor RUBY LAFFOON of Kentucky. The appointment, to the select circle comes as a result of FRED's publicizing the fair name of the Blue Grass state during his broadcasts this Summer.

Nimblewits

By Everett Smith

"Wit Teasers" on Sunday at 11.30 A.M. from WBZ

NO. 1. (No time limit) This cryptogram, taken from a recent issue of "The Cryptogram," official publication of the American Cryptogram Association, is headed, "The Tonic":

Z PZWMJ HT KWTQ PHYX
TWOTJHOX, HQ DSXTJXOT
ZPP QJX EZG: HQ QHRT QJX
RXZY ND PHDX VHQJ
PHMJQ ZOE ESHIXT QJX
BPNWET ZVZG.

No. 2. (1 minute) September brings school days. Quickly, now! How many school books and supplies can you gather together in one minute?



EVERETT SMITH

No. 3. (3 minutes) It takes both PUSH and PULL to complete this exercise.

By changing only one letter at a time, and forming a proper word each time, change PUSH to PULL in seven moves.

No. 4. (2 minutes) By changing only one letter in each word, see if you can form well-known proverbs from the sentences below:

ILL WORE ANY TO PLAN
LAKES BACK I FULL BAY
SET NOR SHY EIGHT HARD
KNOB THAT THE LENT
HANG GOETH.

No. 5. (3 minutes) The rebus below, with accompanying hint, represents a seven-letter word.

P

T Y

"Twere better that no one should know
The need that's in this word of woe."

* * *

Answers to Last Week's Nimblewits

No. 1. MICROPHONE Cryptographers should meet fellow puzzlers at the Parker House this weekend.

No. 2. Poor, Pool, Poll, Pole, Role, Rode, Ride, Rice, Rich.

No. 4. One way: Leather, Lather, Lathe, Late, Ate, At, A.

No. 5. 60 oranges, 100 pears, 140 apples.

For Southern

Listeners

The programs of WFAF at WJZ may be heard over:

WFLA-WSUN Clearwater, Florida
WSB Atlanta, Georgia
WSMB New Orleans, La.
WOAI San Antonio, Tex.
WSM Nashville, Tenn.

The programs of WABC may be heard over:

WQAM Miami, Florida
WJSV Washington, D. C.
WBT Charlotte, N. C.
WTAR Norfolk, Va.
WBIG Greensboro, N. C.

Middle Western

Listeners

The programs of WFAF may be heard over:

KSD St. Louis, Mo.
KYW Chicago, Ill.
WMAQ Chicago, Ill.
WTAM Cleveland, Ohio

The programs of WJZ may be heard over:

WENR-WLS Chicago, Ill.
WGAR Cleveland, Ohio
WJR Detroit, Mich.

The programs of WABC may be heard over:

WBBM Chicago, Ill.
WHK Cleveland, Ohio
WCCO Minneapolis, Minn.
KMOX St. Louis, Mo.
WHAS Louisville, Ky.

NOTE: Outstanding local programs of these stations are regularly listed in The MICROPHONE.

Commission Censorship for Ads Only

(Continued from Page 1)

cial correspondent that he had been forced to delete statements from speeches he intended to make on the radio.

They were sizzling attacks on the ROOSEVELT "New Deal," but not obscene, SCHALL said.

Charges that radio broadcasters refused to permit him to speak, because of this hostility toward the "New Deal" were made by SCHALL.

His charges that the administration's brain trusters were preparing a government news service, patterned after the TASS agency of Soviet Russia or HAVAS of France, were denied in official quarters.

Despite President ROOSEVELT's statements he would not stand for censorship of the radio or the press, the charges of political favoritism continue.

Hence, in informed quarters in Washington it was expected the Communications Commission would issue regulations stating specifically its position with reference to what can or cannot be broadcast.

Football Games On Air In Fall

(Continued from Page 1)

night under floodlights at Pittsburgh.

Pittsburgh University will go into action on Saturday, September 29, against Washington and Jefferson. Notre Dame's first home game will be broadcast from South Bend, Indiana. The opponent will be Texas University.

On Friday, October 12, the traditional battle between Fordham and Boston College will be heard from Boston. This will start the season's real battles. On October 13, Pittsburgh University and Southern California will play at Pittsburgh.

Saturday, October 27, sees the first of the great Eastern games, Army vs. Yale at New Haven. On November 3, the following Saturday, there will be two games broadcast, Harvard vs. Princeton from Cambridge, Mass., and the Universities of Michigan and Minnesota, the first of the "Big Ten" Conference games to be broadcast.

On November 10 there is a choice between the Harvard-Army game and the Northwestern-Illinois tilt.

On succeeding Saturdays the schedule runs: Michigan vs. Ohio State, Army vs. Notre Dame, Pennsylvania vs. Cornell (Thanksgiving Day), Army vs. Navy, Southern California vs. Notre Dame.

It is probable that the late season games from the West Coast, including the Rose Bowl and the East-West contest will go on the air over both the NBC and CBS networks.

McNamara Is Promoted

JOHN F. MCNAMARA, WBZ announcer of long standing, recently was named program manager of station WBZ.

The "Dream Singer"

MY ASSOCIATES in radio, due perhaps to the fact that I came to the air waves from the business field, credit me with being versatile. However, I doubt if the most complimentary of these companions would regard me as sufficiently capable or interesting to the degree of writing a newspaper column.

This is my first attempt at an autobiography. It is difficult to avoid the personal pronoun "I" in such an undertaking, so I launch this with a plea that personal exploitation be attributed to the assignment rather than egotism.

I have been singing as long as I can remember. I enjoy singing, and recall my surprise when I discovered as a youngster that other people did not object, but often invited me to sing. In those days a vocal career was remote from my thoughts. People invariably express surprise when they learn that my first appearance on the air took place only three years ago.

Indirectly, I presume that the World War played a part in my radio debut. Life was a colorful and gay adventure for me upon my return from Europe. The oil boom in Ranger, Texas, intrigued me in 1919 and I roughed it in the fields for months. The oil workers were flattering and encouraged me to sing for them.

Ranger was a boom town, which explains perhaps why I succeeded in becoming the leading—and only—advertising man in the place. I was made secretary and general manager of the Midwestern Advertising Co.—one of my accomplishments being publication of the town's first telephone advertising directory.

Tempted by the possibilities of scimmages in Mexico with the Villa forces, I became an officer with the 7th Cavalry. Fellow officers made me feel that my singing was welcome.

Upon my return to Paterson, N. J., where I now live, I took an active interest in American Legion affairs. My post decided to stage an air production on Armistice Day, 1930. I was assigned to produce as well as to appear in the production. It was broadcast over WODA, of Paterson, and I received my introduction to a microphone.

The program met with favorable response, and friends and acquaintances urged me to embrace radio as a career.

By Ralph Kirbery

(NBC "Dream Singer")

The American Legion program resulted in CBS granting me an audition. I went on WOR on August 31, 1931, and was signed by NBC

September 6, 1931. At this point, I cannot resist reporting that I shall celebrate my third anniversary on NBC next month.

It has been a happy three years, and I have never regretted that I abandoned the business of flour broker to take a gamble in finding favor with radio audiences. I am vitally interested in radio. I have been heard on more than 1000 programs, and every one of them has been of great importance to me. Evidence of this is found in the fact that I have kept an accurate recording of the dates, the sponsors and even the numbers I offered.

As NBC's "Dream Singer," I have made friends—sincere people who take an interest in my work and offer suggestions. I welcome these and have found scores of them helpful.

One lady in Nebraska has not missed one week during the three years without dropping me a line. Knowing that I am pleasing, making people happy, is one of the greatest pleasures I derive from my work.

I play golf and bridge, and am regarded as an addict of the former. However, I prefer hunting to either. Am not content with having just one dog, so I have a spaniel, police and pointer.

I am nursing the hope that I shall be able to hunt Kodiak bear in Alaska some day. I play the piano, and don't care for "hot" or novelty songs. I do not care for low comedy on the air. I am rated as an expert rifle and revolver shot, and serve in the capacity of instructor in the use of firearms for several towns in New Jersey.

"Won't You Wait Until The Cows Come Home," is one of the earliest songs, I remember, explained perhaps by a boyhood romance I was experiencing at the time the song was popular.

I enjoy exercising, and have only one fear, that of not being properly prepared for a sudden program assignment.

I trust that I have not bored you to such a degree that you will not listen to my new program September 6. If you do I hope you will like it. If you don't like it, I shall be pleased to receive your criticism.



RALPH KIRBERRY, who turned from business to radio to become a baritone, and who begins a new program over NBC September 6.



MICROPHONE



Programs For Week Ending September 7

5¢

Radio Weekly



Carolyn Rich, CBS Songstress

This file including all text and images are from scans of a private personal collection and have been scanned for archival purposes only. This file may be freely distributed, but not sold on ebay, electronically or in reproduced form. Please support the preservation of old time radio.