

Long Wave
Short Wave
News Spots
& Pictures

MICROPHONE

THE ORIGINAL U.S. RADIO NEWSPAPER

5
Cents
the Copy
\$1.50 Year

Volume III, No. 43

WEEK ENDING NOVEMBER 2, 1934

* Published Weekly

This and That

By Morris Hastings

TO MY WAY of thinking the most original and the most delightful program on the radio is ALEXANDER WOOLLCOTT'S, broadcast over the Columbia network on Sundays from 9 to 9.30 P. M.



Mr. HASTINGS

It even may be, although "the First Wit" would frown on so ponderous an idea, that the program is "significant."

Mr. WOOLLCOTT should be the envy of many comedians. Where they attempt to "put their personality

across" with noisy songs and loud guffaws, this witty and urbane gentleman actually succeeds in doing it without benefit of shouts or ha-cha.

A diverting mixture of sugar and spice, Mr. WOOLLCOTT rambles along informally in his programs, telling admittedly round-about but delightful stories, gently teasing his sponsors, and waxing sentimental over such favorites of his as HELEN HAYES, DOROTHY PARKER, or the late Mrs. FISKE.

There's always a surprise on his broadcast. A few Sundays ago, for example, he brought members of the great GILBERT and SULLIVAN protagonists, the D'OYLY CARTE troupe, to the microphone in scenes from a number of the operettas.

WOOLLCOTT himself even read a bit from "Patience."

His programs may be "signifi-

(Continued on Page 15)

Education-Profit Compromise Forecast

Censorship of Radio Is Renewed

U. S. Board After False Advertisers

By The MICROPHONE'S Special Washington Correspondent

Censorship of radio advertising has been renewed by the Federal Trade Commission.

It has ordered all broadcast stations to submit continuities to be broadcast between November 15 and 30.

The announced purpose is to blue-pencil misleading statements. The notice that all of the radio "ads" would be scrutinized by the Federal bureau was expected to put advertisers on their guard.

Similar action was taken by the Commission last July when out of 180,877 continuities received, 161,466 were found subject to no criticism. The remaining 22,411 are being studied to decide whether action is necessary.

Commissioners declared that radio advertisers generally are as truthful as those who use the daily newspapers or magazines and many of them use both facilities. It is to "crack down" on the chiseler that the new drive was ordered.

The zone covered by the Commission call includes the District of Columbia, all New England states, New York, New Jersey, Delaware, Maryland and Puerto Rico. Calls for the other zones will be issued later.

Ickes Approves Radio

Free Speech on the Air Necessary, He Insists

Radio is a fairer medium of communication for the public figure than the newspaper, HAROLD L. ICKES, Secretary of the Interior, declared before members of the National Advisory Council on Radio in Education in Chicago.

For that reason, Secretary ICKES insisted, radio must be kept free to all political parties.

"However fair and unbiased a newspaper may be and however good its intentions, it cannot give all the space necessary to a full exposition of all sides of a public question," Secretary Ickes said.

"The development of the radio is having a profound effect upon the education and the mobilization of public opinion. By means of radio the man who wishes to do so can get in full the speeches of those in public life.

"He can judge of the sincerity of the speaker and he can weigh his arguments as his theme unfolds. Nor does he have to confine his attention to a discussion of one side of a public question."

Secretary ICKES stressed the necessity for free speech on the radio. He said that he believed in oppo-

Aylesworth And Paley At Hearing

By The MICROPHONE'S Special Washington Correspondent

Compromise loomed as the hearings of the broadcast division of the Federal Communications Commission closed on demands for a specific allocation of radio channels to educational, religious and other non-profit organizations.

The Commission was not expected to file its report to Congress until after January 3.

Regardless of what the Commission recommends, the fight of the "three R's" for a "New Deal" in the ether channels undoubtedly will be resumed.

It has been under way ever since radio became known. It was a sharp issue in 1927 when HERBERT HOOVER as Secretary of Commerce was taking chaos out of the air.

The commercial broadcasters have expressed a willingness to co-operate with the schoolmasters in arranging schedules on the air that will not only be satisfactory from an educational viewpoint but attractive to the listeners.

The MICROPHONE'S correspondent gathered in radio circles here that the country would hear more so-called educational programs in the immediate future.

The National Association of Broadcasters directors are planning overtures to the schoolmasters.

Commercial broadcasters closed the hearing, with WILLIAM S. PALEY, president of the Columbia Broadcasting System, and M. H. AYLESWORTH, president of the National Broadcasting Company, protesting against regulations forcing a specific allotment of wavebands to the non-profiters.

The commercial interests were joined in their argument by some

(Continued on Page 15)

Friend of Radio



HAROLD L. ICKES, Secretary of the Interior, who believes radio is having a profound effect on the education and mobilization of public opinion.

sition honestly and frankly expressed and added that any attempt to control radio for partisan or sinister purposes would be "sinning against the light."

"We believe in real freedom and we want our opponents to have the same freedom of expression by means of the radio that we ask for ourselves," he declared.

Program by Ponselle

ROSA PONSELLE, dramatic soprano of the Metropolitan Opera, will sing an aria from SAINT-SAENS' "Samson and Delilah" on her CBS-WABC recital Monday, October 29, at 9 P. M. Her program also includes "La Violettera" and "The Last Rose of Summer."

Pictures

- DOROTHY LAMOUR, CBS
Front Cover
- HAROLD ICKES, Secretary of the Interior
Page 1
- MARGARET SPEAKS, vocalist
Page 2
- ROBERT RIPLEY
Page 3
- HENRY FORD and VICTOR KOLAR
Page 4
- BETTY BARTHELL, singer
Page 5
- JACK BENNY, comedian
Page 5
- DOROTHY PAGE
Page 6
- WILLIAM LYON PHELPS, SIG-MUND ROMBERG
Page 7
- DOROTHY FREDERICKS
Page 8
- NILA MACK
Page 9
- RUTH EVERETS
Page 10
- FRED WARING
Page 12
- MIRIAM HOPKINS, JOHN BOLES
Page 13
- FRANK BUCK
Page 14
- VIRGINIA HEATH, audition winner
Page 15
- TED FIO RITO
Back Cover

News Flashes

WEEKDAYS

A.M.
10.30 WEAFL Network: WEEI WGY WSM WFLA WSB
WABC Network: WCAU WHAS WPG KMOX WBBM WCCO WJSV
10.45 WJZ Network: WBZ WHAM KDKA WLW WBAL

P.M.
6.30 WEAFL Network: WEEI WGY WSM WFLA WSB
WABC Network: WCAU WHAS WPG KMOX WBBM WCCO WJSV
6.40 WJZ Network: WBZ WHAM KDKA WLW WBAL

SUNDAYS

A.M.
11.00 WEAFL Network: WEEI WGY WSM WFLA WSB
WJZ Network: WBZ WHAM KDKA WLW WBAL
12 M. WEAFL Network: WEEI WGY WSM WFLA WSB
[Important news is given over these stations, generally on the hour and half hour.]

Contents

- News Flashes Box Page 1
- A compromise between educational and commercial interests is forecast Page 1
- This and That by MORRIS HASTINGS Page 1
- ROBERT RIPLEY tells some radio "believe it or not's" Page 3
- Station Directory Page 4
- Radio Lane by JIMMY J. LEONARD Page 5
- Studiosity by LES TROY Page 5
- Editorials Page 5
- A program that blends music and literature Page 7
- Children's Page Page 9
- Weather Reports Box Page 10
- WEEI Page Page 11
- HELEN HAYES, noted actress, rehearses for a radio appearance Page 13
- Short Wave Directory Page 13
- Reflections by DIANA HERBERT Page 15
- Nimblewits by EVERETT SMITH Page 15
- Q. and also A. Page 15
- Western Maestro Back Cover

BOSTON GARDEN
Presents
Col. W. T. Johnson's
World's Championship
RODEO

NOVEMBER 1-12 Mats. Sat.-Wed.-Sat.
Sun. & Mon.

\$.55, \$1.10, \$1.65
A Few at \$2.20

Children Half-Price At All Performances

SPECIAL CONTESTS
Afternoon and Evening, Sunday,
November 11
EVERY EVENT A CONTEST

Saturday, October 27 - Roxy's Gang over CBS-WABC at 8 P.M.

Highlights

- A. M.**
- 11.30—The Melody Mixers, NBC-WJZ
- P.M.**
- 1.45—Army vs. Yale, CBS-WABC
 - 2.00—Ohio State vs. Northwestern, football, WLW
 - 6.00—One Man's Family, NBC-WEAF
 - 8.00—Roxy and his Gang, CBS-WABC
 - Sigmund Romberg, William Lyon Phelps, NBC-WEAF
 - 9.00—Grete Smeckgold, CBS-WABC
 - Songs You Love, Rose Bampton, NBC-WEAF
 - Radio City Party, NBC-WJZ
 - 9.30—The Gibson Family, Musical Comedy, CBS-WEAF
 - 10.00—Andrew Jacobson's Orchestra, YN-WNAC

(All programs are listed in Eastern Standard Time. Central Time is one hour earlier.)

- 9.30 A.M. EST; 8.30 CT "Banjoleers," WEA WEEI WGY Styles, KDKA Mail Bag, WLW Matinee Melodies, WNBX
- 9.45 A.M. EST; 8.45 CT Johnny Marvin, tenor, WEA F (news until 9.50) News, minstrel, WEEI High Priests of Harmony, WGY The Plough Boys, KDKA Marshall's Children Hour, WGAR, 1 h. Louis John Johnen, baritone, (news at 9.55) WLW Eton Boys, WABC WCAU WHAS Ken Fontaine, WNBX
- 10 A.M. EST; 9 CT News, Annette McCullough, "blues," WEA WEEI WGY Edward MacHugh, Gospel Singer, WJZ KDKA WSM WFLA WSB Home Forum Cooking School, WBZ Organ, WHAM Suzanne Littleford, WLW News and Mellow Moments, WABC WCAU WHAS WBBM News and Home Hour, WPG, 1 h. Poet, WNBX
- 10.15 A.M. EST; 9.15 CT Morning Parade, WEA F, 45 m. (WGY, 30 m.) (WEEI, 15 m. and at 10.45) (WFLA, 10.30-10.45) Singing Strings, WJZ WBZ WHAM, 30 m. (KDKA at 10.30) Home Forum, KDKA Livestocks, WLW Carlton and Shaw, WABC WCAU WHAS WBBM Town Crier, WNBX
- 10.30 A.M. EST; 9.30 CT Organ, WEEI Blues Songs, WLW Let's Pretend, WABC WCAU WBBM, 30 m. Dr. W. I. Auber, WNBX
- 10.45 A.M. EST; 9.45 CT Johnny Marvin, tenor, WGY News and Originalities, Jack Owens, tenor, WJZ KDKA WFLA WGAR News, Musicale, WBZ Radio Gang, WHAM Rhythm Jesters, WLW Daily Poem, WNBX
- 11 A.M. EST; 10 CT Alma Schirmer, pianist, WEA F WEEI Galaxy of Stars, WGY WLW WTAM Honey-mooners, Grace and Eddie, WJZ WBZ WHAM KDKA WSM WGAR Pete Woolery's Orchestra, WABC WCAU WPG WHAS WBBM, 30 m. Ludlow Program, WNBX, 30 m.
- 11.15 A.M. EST; 10.15 CT The Vass Family, WEA F WEEI WGY WSM Tony Wons, WJZ WBZ WHAM WGAR Kiddies Klub, KDKA, 45 m. Bailey Axton, songs, WLW
- 11.30 A.M. EST; 10.30 CT Down Lovers' Lane; Gloria La Vey and Walter Preston, WEA F WSM, 30 m. (WEEI, 25 m.) Children's Theatre, WGY, 30 m. Melody Mixers, Morin Sisters, Walter Blaufuss' Orchestra, WJZ WHAM WLW 30 m. (WGAR, 15 m.) (WFLA at 11.45) Federation of Women's Clubs, WBZ, 30 m. Carnegie Hall Children's Entertainment, WABC WPG Red Ranney, WNBX
- 11.45 A.M. EST; 10.45 CT Gene LaValle, WGAR Concert Miniatures, WABC WPG Nite Owls, WNBX, 30 m.
- 12 N. EST; 11 A.M. CT Armchair Quartet, WEA F WEEI WSM WSB Joan Darling, WGY Fields and Hall, WJZ KDKA WGAR Weather, the Monitor Views the News, WBZ 4-H Club, WHAM Connie Gates, songs, WABC Silver Strains, WOR Bob Fallon's Orchestra, WMCA, 30 m. Len Salvo, organist, WGN
- 12.15 P.M. EST; 11.15 A.M. CT Tercentenary of Col. Thomas Dongan, Mayor La Guardia, Cardinal Hayes, WEA F WSB, 45 m. Martha and Hal, weather, WGY Genia Fornatiova, soprano, A Venetian Song; Schezo's Storm Lullaby, WJZ KDKA WSM WGAR Weather, Musicale, WBZ News, weather, WHAM Along the Volga, Russian music, WABC WCAU WPG WHAS WIND Gene and Charlie, WBBM Ensemble, WOR Doring Sisters, WGN Highway Safety, WNBX
- 12.30 P.M. EST; 11.30 A.M. CT Jack, Del and Ray, WEEI WGY Farm Program, WGY, 30 m.

- Farmer's Union program, WJZ WBZ WHAM KDKA WLW WSM WFLA WGAR, 1 h. Piano Pointers, Abram Chasins, WABC WCAU WHAS WBBM, 30 m. (WPG at 12.45) Motor Market, WPG Museum Talk, WOR Here's How, WMCA Markets, music, WGN Nip and Tuck, WNBX
- 12.45 P.M. EST; 11.45 A.M. CT Cooking Class, WOR Three Blue Chips, WMCA Home Management, WGN Farm Bureau, WNBX
- 1 P.M. EST; 12 N. CT Jan Brunesco's concert ensemble, WEA F, 30 m. (WEEI from 1.10) Stocks, WEEI WGY George Hall's Orchestra, WABC WCAU WPG WIND Markets, police bulletins, WHAS Weather, Week-end Review, WPG Organ, dance tunes, WOR, 30 m. Charlie Eckel's Orchestra, WMCA, 45 m. Songs, organ, WGN, 30 m. 4-H Club, WNBX
- 1.15 P.M. EST; 12.15 CT Southerners, WGY Wildcats, WHAS Football Souvenir Program, WABC WCAU WPG WBBM
- 1.30 P.M. EST; 12.30 CT Russ Lyons' music, WEA F WEEI Vagabonds, WGY Football, WJZ WBZ WHAM KDKA WFLA WSB WGAR Business news, WLW Football, Army vs. Yale, WABC WCAU WPG, 2 h. Theatre Club, WOR Market Reports Mid-day Service, WGN, 30 m.
- 1.45 P.M. EST; 12.45 CT Yale vs. Army, football, WEA F WEEI WGY WFLA Words and Music, Leola Turner, soprano, WJZ WHAM WSM, 30 m. WGAR (WFLA, 15 m.) 4-H Club, WBZ, 30 m. Orchestra, KDKA Tunes and Tempos, WOR The Ragamuffins, WMCA Palmer House Ensemble, WGN
- 2 P.M. EST; 1 CT Ohio State-Northwestern football game, WLW, 1 h., 30 m. "Colleagues," WOR Sports talk, WMCA Palmer House Ensemble, WGN, 30m.
- 2.15 P.M. EST; 1.15 CT Songfellows, WJZ WBZ WHAM WGAR WSM Football game, WOR, 2 h., 30 m. Harmonica Harmonizers, WMCA
- 2.30 P.M. EST; 1.30 CT Piano and organ concertos, WMCA, 30 m. Century of Progress Orchestra, WGN Afternoon Concert, WNBX, 30 m.
- 2.45 P.M. EST; 1.45 CT Football, Iowa vs. Minnesota, WJZ WBZ WTAM KDKA Football, Auburn vs. Kentucky, WHAS, 2 h. Palmer House Ensemble, WGN
- 3 P.M. EST; 2 CT Orchestra, WJZ WBZ, 30 m. Jack Orlando's Orchestra, WMCA WIP Football, Ohio State vs. Northwestern, WGN, 2 h., 45 m. Smiling Twins, WNBX
- 3.30 P.M. EST; 2.30 CT Captivators, WABC, 30 m. Sports Review, WMCA, 2 h. Webby Mack, WNBX
- 4 P.M. EST; 3 CT Ann Leaf, organ, WABC, 30 m. Apple Knockers, WCAU, 30 m. Elmer and Cecil, WNBX
- 4.15 P.M. EST; 3.15 CT Student Hill Billies, WNBX
- 4.30 P.M. EST; 3.30 CT Paul Sabin's Orchestra, WABC WCAU WPG, 30 m. Al McCullough, WNB X
- 4.45 P.M. EST; 3.45 CT Tinker Kids and Liza, WGAR "Science in Your Home," WOR Underhill and Paulette's Orchestra, WNBX
- 5 P.M. EST; 4 CT NBC Sixth Annual Hallow'en Party, WEA F WEEI WSM, 30 m. (WGY, 15 m.) Stanleigh Malotte, the News Rhymer, WJZ WBZ WHAM WLW Ozark Mountain Boys, WGAR Little Jack Little's Orchestra, WABC WPG, 30 m. Variety, weather, WOR Tea Time Melodies, WNBX
- 5.15 P.M. EST; 4.15 CT John Finke, pianist, WGY Jackie Heller, tenor, WJZ WBZ WHAM KDKA Tim Healy, WLW Western Drama, WOR

Miss Speaks Sings



MARGARET SPEAKS, lyric soprano and niece of the composer OLEY SPEAKS, is heard frequently in recitals over the NBC networks.

- 5.30 P.M. EST; 4.30 CT Our American Schools, direction of Florence Hale, chairman of National Education Association, WEA F WGY WSB, 30 m. (WFLA at 5.45) Musical Turns, WEEI Platt and Nierman, WJZ WHAM WFLA WGAR Serenaders, WBZ Football scores, KDKA Jack Armstrong, All American Boy, WABC WCAU Out of the Dusk, WHAS, 30 m. Mattie Curtan, songs, WPG Kay Fayre, "blues," WOR Sally's Party, WMCA, 30 m
- 5.45 P.M. EST; 4.45 CT The Evening Tattler, WEEI The Ranch Boys, WJZ WBZ WHAM KDKA WGAR Jack Armstrong, WLW "Robinson Crusoe, Jr.," WABC WCAU Jimmie Allen's Adventures, WOR Musicale, WGN, 30 m.
- 6 P. M. EST; 5 CT One Man's Family, Anthony Smythe, WEA F WEEI WLW WSM WFLA WSB, 30 m. Old Man Sunshine, WGY Angelo Ferdinand's Orchestra, WJZ Minstrels, WBZ Sports, WHAM Soloist, KDKA Concert Ensemble, WGAR Frederick William Wile, "The Political Situation in Washington Tonight," WABC Weather, Cross Roads, WHAS Dance orchestra, WOR, 30 m. Alex Botkin's String Ensemble, WMCA
- 6.15 P.M. EST; 5.15 CT Col. Jim Healey, WGY Republican Campaign, WBZ Comedy Stars, WHAM News of the Week, WGAR Samuel Dejong's Orchestra, WABC WHAS Charlie Eckel's Orchestra, WMCA Organ, WGN
- 6.30 P.M. EST; 5.30 CT News and Peg La Centra, songs, WEA F WSM Rhyming Reporter, news, WEEI News, Brevities, WGY News, Football Scores, WJZ News, weather, WBZ Evening Interlude, WHAM, 30 m. Bob Newhall, WLW News, Freddy Rose, WSM Ellis Vander Pyl, WGAR Eddie Dooley, football, WABC WCAU Red Grange, football scores, WBBM WHAS Natural History talk, WOR Buddy Cantor, WMCA Orchestra, WGN, 30 m.
- 6.45 P.M. EST; 5.45 CT Football, Thornton Fisher, WEA F WEEI WGY WLW Captain Al Williams, WJZ KDKA Sports Review, WBZ Traak Walton League, KDKA Radio Special, WFLA

- Front Page Drama, WGAR Margaret Brainard, Jerry Cooper, (news at 6.55) WABC WCAU WHAS WBBM Variety, WOR Sports, WMCA
- 7 P.M. EST; 6 CT Religion in the News, WEA F Neal O'Hara, WEEI Antoinette Halstead, contralto, quartet, WGY, 30 m. Football scores and John Herrick, WJZ KDKA Edward MacHugh, baritone, WBZ Hank and Herb, WHAM, 30 m. R. F. D. Hour, WLW, 30 m. Musical Memories, WFLA, 30 m. Musical Scoreboard, WSM, 30 m. Cleveland Playhouse, WGAR Socoyland Sketches, WABC WCAU WBT, 30 m. Soiree, WHAS, 30 m. Ford Frick, sports, WOR Save a Life, WMCA WIP Orchestra, WGN
- 7.15 P.M. EST; 6.15 CT Jamboree, WEA F, 30 m. After Dinner Revue, WEEI Navy Day Talk, Charles Francis Coe, WJZ Radio Nature League, WBZ Gypsy Trails, WGAR Mavencik Jim, WOR, 30 m. Arthur Warren's Orchestra, WMCA Palmer House Ensemble, WGN
- 7.30 P.M. EST; 6.30 CT Pic and Pat, WEEI, 30 m. Musical program, WGY Dorsey Bros.' Orchestra, WJZ Otto Thurn's Orchestra, WHAM, 30 m. William Penn Orchestra, KDKA, 30 m. Southwind, WLW Variety, WSM Whispering Jack Smith, WABC WHAS Street Scenes, WCAU George Reid, minstrel, WMCA Sports reviewer, WGN
- 7.45 P.M. EST; 6.45 CT Floyd Gibbons, WEA F WGY WLW WFLA Pickens Sisters, WJZ WGAR Christian Science Monitor Interview, WBZ Freddie Rose, WSM The Lawyer and the Public, James Grafton Rogers, WABC WCAU WHAS His Honor, the Mayor, WOR Maximilian Bergere's Ensemble, WMCA
- 8 P.M. EST; 7 CT Sigmund Romberg's Music, William Lyon Phelps, excerpts from "Waltz Dream" and "Chocolate Soldier," Save My Heart; Two Maids in Love Are We; Never Had An Education; Devil in Disguise, WEA F WEEI WGY WLW, 1 h. Art in America, "American Sculpture Since the Civil War," WJZ WBZ KDKA WSM, Jan Campbell's Orchestra, WHAM The Cocomans, WFLA, 30 m. Gene Beecher's Orchestra, WGAR, 30 m. Roxy and his Gang, Hallow'en Program, WABC WCAU WHAS WBBM WBT, 45 m. Hotel Traymore Concert Orchestra, WPG "Romance in Song," Della Baker, Ralph Grosvenor, WOR, 30 m. Three Little Funsters, WMCA Palmer House Ensemble, WGN
- 8.15 P.M. EST; 7.15 CT Jimmy Allen's Adventures, WHAM Jubilee Singers, WPG Central Union Mission, WMCA, 30 m. Glee Club, WGN
- 8.30 P.M. EST; 7.30 CT George Olsen's Orchestra, Ethel Shutta, WJZ WHAM KDKA WFLA WGAR, 30 m. (WSM at 8.45) ERA Orchestra, WBZ, 30 m. Variety, WSM Jack Webb, WPG Organ recital, WOR, 30 m. Kay Kyser's Orchestra, WGN, 30 m.
- 8.45 P.M. EST; 7.45 CT Musical Review, WABC WCAU WPG WBT Tony Cabooch, WMCA
- 9 P.M. EST; 8 CT Songs You Love, Rose Bampton, Pardon My Southern Accent; My Heart at Thy Sweet Voice; Wonderful One; Touch of Your Hand; Cup of Sorrow; Beautiful Face; The Rosary; "Music in the Air," excerpts, WEA F WEEI WGY WLW, 30 m. Radio City Party, Frank Black's Orchestra, Minstrels, WJZ WBZ WHAM KDKA WGAR, 30 m. "Possum Hunters," "Gully Jumpers," WSM, 30 m. Grete Smeckgold, On Wings of Song; The World Is Mine; With All My Heart; Andre Kostelanetz' Orchestra, WABC WCAU WPG WHAS WBBM WBT, 30 m. Pan-American Panoramas, WOR, 30 m. "Americana," revue, WMCA WIP, 1 h. Little Theatre, WGN, 30 m.
- 9.30 P.M. EST; 8.30 CT The Gibson Family; Lois Bennett, Conrad Thibault, Jack and Loretta Clements, Don Voorhees' Orchestra, WEA F WEEI WGY WLW, 1 h. National Barn Dance, WJZ WBZ WHAM KDKA WGAR, 1 h. String Sextet, WSB, 30 m. Nap and Dee, WSM Invitation Serenade, WFLA, 30 m. Richard Humber and his Champions, WABC WHAS WCAU, 30 m. Aldrich's Imperial Hawaiians, WPG String Trio, WOR, 30 m. Wayne King's Orchestra, WGN
- 9.45 P.M. EST; 8.45 CT Crook Brother's Band, WSM Jan Garber's Orchestra, WGN
- 10 P.M. EST; 9 CT Asher and Little Jimmie, WSM Band, Edward D'Anna conducting, WABC WHAS WBBM, 30 m. John Kelvin, tenor, WOR Blood and Thunder, WMCA, 30 m. News and Symphony Orchestra, WGN
- 10.15 P.M. EST; 9.15 CT "Lasses and Honey, WSM The Show Boat Boys, "Whirlwind Pianist," WOR Earl Burnett's music, WGN
- 10.30 P.M. EST; 9.30 CT Hal Kemp's Orchestra, WJZ, 30 m. (WBZ at 10.45)

Football Games

- P.M.**
- 1.30—Army vs. Yale, Columbia-WABC WCAU WPG KMOX
 - 1.45—Army vs. Yale, NBC-WEAF, WEEI
 - 1.45—Colgate vs. Holy Cross, WNAC WEAN WICC WEEA WDRG WORC WMS WLBZ WNBH WLH
 - 2.00—Ohio State vs. Northwestern, WLW (WGN at 3 P. M.)
 - 2.45—Iowa vs. Minnesota, NBC-WJZ
 - 2.45—Auburn vs. Kentucky, WHAS
- Scores**
- P.M.**
- 5.30—KDKA
 - 5.45—WNAC
 - 6.30—WJZ WABC WNAC WEAN WICC WEEA WDRG WORC WMS WLBZ WNBH WCAU WBBM
 - 6.45—WEAF WEEI WJAR WCSH WTAG WTIC WLW
 - 7.00—WEEI WTAG WTIC WCSH WJZ
 - 7.15—WBBM

World in Review, WBZ News, WHAM Behind the Law, KDKA Castle Farm Orchestra, WLW, 30 m. Possum Hunters, WSM Mel Emerson's Orchestra, WGAR, 30 m. Saturday Revue, news, dance, WABC WCAU WPG WIND, 30 m. Studio Party, WHAS, 30 m. Will Osborne's Orchestra, WOR, 30 m. Harry Rosenthal's Orchestra, WMCA, 30 m. Doring Sisters, WGN

10.45 P.M. EST; 9.45 CT Barn Dance music, WSM Orchestra, WGN

11 P.M. EST; 10 CT Guy Lombardo's Orchestra, WEA F, 30 m. (WEEI from 11.15) Weather, news, WEEI Charles Boulanger's Orchestra, WGY, 30 m. Willard Robison's Orchestra, WJZ WHAM, 30 m. (WBZ at 11.15) William Penn Orchestra, KDKA, 30 m. Barn Dance, WLW, 1 h. Delmore Brothers, WSM Ted Rollins' Orchestra, WGAR, 30 m. Glen Gray's music, WABC WIND, 30 m. Weather, Steel Pier Orchestra, WPG Hughie Shea's Orchestra, WHAS, 30 m. Earl Hines Music, WBBM Billy Hays Orchestra, WCAU Hotel William Penn Orchestra, KDKA Weather, Harry Salter's Orchestra, WOR, 30 m. Voice of Romance, WMCA Ted Weems' Orchestra, WGN

11.15 P.M. EST; 10.15 CT Dixie Liners, WSM Radio Scandals, WMCA, 30 m. Organ, WGN

11.30 P.M. EST; 10.30 CT Paul Whiteman's Saturday Night Party, WEA F WGY WFLA WSB, 30 m. Freddie Martin's Orchestra, WJZ WBZ WHAM WGAR, 30 m. Dorsey Brothers' Orchestra, KDKA, 30 m. Henry Busse's Orchestra, WABC WHAS, 30 m. Dance orchestra, WPG "Fruit Jar Drinkers," WSM Julie Wintz's Orchestra, WOR, 30 m. Dance Tunes, WGN, 3 h., 30 m.

11.45 P.M. EST; 10.45 CT Robert Lum, WSM Blue Rhythm Band, WMCA

12 M. EST; 11 P.M. CT Art Kassel's Orchestra, WEA F WEEI WGY Eric Madriguera's Orchestra, WJZ WBZ KDKA, 30 m. Dance orchestra, WLW, 30 m. Delmore Brothers, WSM Joe Haymes' Orchestra, WABC WCAU, 30 m. Jimmy Joy's Orchestra, WHAS Gus Steck's Orchestra, WOR, 30 m. Day's End, WMCA, 30 m.

12.15 A.M. EST; 11.15 P.M. CT Carefree Carnival, Ned Tollinger, master of ceremonies, Meredith Wilson's Orchestra, Gogo Delys, contralto, Rita Lane, soprano, WEA F WEEI WGY, 45 m.

12.30 A.M. EST; 11.30 P.M. CT Emil Coleman's music, WJZ WBZ WHAM KDKA, 30 m. Gene Burchell's Orchestra, WLW, 30 m. Pancho and Orchestra, WABC, 30 m. Hal Grayson's Orchestra, WHAS, 30 m. Dance Orchestra, WOR, 30 m. Archie Bleyer's Orchestra, WMCA, 30 m.

12.45 A.M. EST; 11.45 P.M. CT Robert Lunn, WSM

1 A.M. EST; 12 M. CT Moon River, WLW, 30 m. Buddy Welcome's Orchestra, WABC, 30 m. Harry Sosnick's Orchestra, WBBM, 30 m.

Every Saturday
WNAC
and Yankee Network
10 TO 10.30 P.M.

SCHRAFF'S
"Party Nights"

"Sweet and Lovely" Dance Music
Featuring **Andrew Jacobson**
and his Grand Orchestra
with Schraff's Radio Nightingales

Jeanie Fans Out



JEANIE LANG, who sings with BUDDY ROGERS' orchestra, never answers her fan mail. The reason is that the bulk of it consists of marriage proposals. So she destroys it so that nobody's feelings will be hurt.

"One-Lung" Radio Stations Must Prove Right to Federal Permit

Interest Of Public Held Paramount

By The MICROPHONE'S Special Washington Correspondent

Public interest is paramount, the broadcast division of the Federal Communications Commission declared in a statement of policy governing issuance of permits to operate 100-watt stations, the "one-lungers" that reach a circle five to 10 miles wide.

Congress authorized the Commission to grant applications for additional licenses for stations not exceeding 100 watts in power "if the Commission finds that such stations will serve the public convenience, interest or necessity and that their operation will not interfere with the fair and efficient radio service of stations."

The broadcast division's statement said:

"New broadcast stations will be licensed under this section only after a full showing has been made that the station will be operated in public interest.

"This showing must include full facts concerning the applicant's financial and technical ability to operate the station requested.

"It must be shown that such program material is available that programs can be built that will be of service and interest to listeners.

"Proof must be submitted that sufficient possibilities are available that the applicant can provide adequate talent, personnel and properly maintain equipment.

"Past records show that in many cases applicants hope to obtain a limited capacity and expect at a later date to materially increase that facility.

"The present allocation does not permit such later increases and accordingly the Commission must have proof that the assignment, as requested, has a reasonable promise of success."

Beer Firm Bans Cocktail Songs

Beer companies who sponsor radio programs are fussy about what songs are played on their programs, according to *Variety*.

One company refused to allow its program to include the tune "Cocktails For Two," because it was thought the song made cocktails more romantic than beer. It further refused to allow the sing "Vive La France" because France is associated with wine and not Milwaukee's favorite brew.

Medical Head To Discuss Cancer

Dr. BERNARD SACHS, president of the New York Academy of Medicine, will report on the progress of the medical profession's battle against cancer, over the NBC-WEAF network on Tuesday, October 30, at 4.45 P. M.

Dr. SACHS will speak in connection with the opening of Cancer Week, October 29 to November 3. His subject will be "The Reaction of the Public to Cancer Education."

"Believe It Or Not" Ripley Establishes Radio Records

The Word Radio, He Says, Is 3000 Years Old

By JIMMY J. LEONARD

THE word RADIO, which we have believed to be comparatively new to our vocabulary, is really 3000 years old, according to ROBERT L. RIPLEY, famous debunker of long-established facts.

"This word may be translated from the ancient Talmud," Mr. Ripley told The Microphone. "Translated into English the word means, 'a voice that goes from one end of the world to the other.'

"That is only one reference to the unbelievable in radio," smiled Mr. Ripley. "Naturally, I have many others pertaining to radio, but I have been rushed to near exhaustion, and I can scarcely think at all. Perhaps, if I gave some 'unbelievables' in reference to myself I should do much better."

Mr. RIPLEY explained that he was the first man to broadcast a national network program from the high seas. It was done from the Leviathan as the liner was under full steam to this country, in 1931.

The greatest thrill ever experienced by Mr. RIPLEY, whose veracity has been questioned during the past 13 years on an average of 15,000 times a week, was when he spoke to every country in the world from America. He was followed by a legion of interpreters. This created another record in radio broadcasting.

Another achievement in radio also must be credited to Mr. RIPLEY. He was the first man to hold the long distance radio speaking record. Two years ago he broadcast from Schenectady, N. Y., to Australia, a distance of 10,000 miles. And he broke his own record when he went to Australia and broadcast a program from there to a nation-wide audience in this country.



ROBERT L. RIPLEY, whose "Believe It Or Not" cartoons are hardly more famous than his radio programs of the improbable.

While he was relating these achievements, it was obvious that Mr. RIPLEY took great pride in them. There is one Believe It Or Not story he has more or less kept in the shadows. It is his love to chat over the air. He thinks it a toss-up as to whether he'd rather draw his famous revelations or tell about them to the radio audience.

Mr. RIPLEY has just returned from a trip abroad in quest for new and interesting facts. He says it is beside

Artist Admits He's Fond of Chats On Air

the point that he has enough material on hand at present to continue his daily illustrations for the next 150 years.

"Four months during every year is devoted to travel," said Mr. Ripley. "It is my ambition to travel to every civilized country in the world, including many that are not so civilized. I have traveled more than 80,000 miles. Much of this has been by airplane. I believe my total of visits to different countries is somewhere in the neighborhood of 185."

When he was asked to tell the strangest thing he'd ever witnessed, Mr. RIPLEY decided not to put his finger on any one experience. They were far too numerous and interesting to draw but one from among them. The strangest land he'd ever visited was India.

Man, he thinks, is strangest when witnessed practicing his religion, especially one embracing physical torture. Such as the man in India who has watched the sun while sitting in one position for 15 years until his limbs grew useless and his eyes blind. Or the fakir who held an outstretched hand to the heavens until it grew rigid and birds built a nest in the palm of his hand.

There's But One Plum Left On the FCC Tree

By The MICROPHONE'S Special Washington Correspondent

All but one of the larger "plums" in the Federal Communications Commission's roster of non-civil service positions were distributed with appointments recently of two assistants general counsel.

GEORGE PORTER, former acting general counsel of the defunct Federal Radio Commission, and FRANK ROBERTSON, former attorney general of Mississippi, but more recently a town judge of Pelham, N. Y., were named.

PORTER was expected to be assigned to the handling of cases

pertaining to broadcasting.

They will serve under PAUL D. P. SPEARMAN, of Mississippi, general counsel of the FCC.

The last remaining "plum" in the legal staff, paying a salary of \$7,500 a year as do the ROBERTSON and PORTER offices, was expected to be filled shortly.

Lieut. Comdr. E. M. WEBSTER, former chief of the Coast Guard radio, has been appointed one of the senior engineers of the FCC.

Col. Roosevelt Speaks

Colonel THEODORE ROOSEVELT will speak over the ABS-WMCA network on Friday, November 2, at 1.15 P. M. He will discuss the Red Cross as he has seen it in action, at the annual meeting of the Delaware Chapter in the Dupont Hotel in Wilmington, Delaware. The program will originate at WDEL.

His Proving Ground



PETER VAN STEEDEN, the maestro, uses a barn on his Summer place on Long Island as a proving ground for his trumpet and trombone players. There the lads blast to their hearts' content in trying out musical effects. So far, nothing has left the barn except a few mice.

New Dutch Station Is Heard Here

By GEORGE LILLEY

Short wave lanes are offering many fine signals during the forenoons now.

Paris, Berlin and Daventry, all on the 19-meter (15-meg.) spectrum, are coming through steadily with enjoyable programs that represent the cream of European ether fare.

And right in between the waves that emanate from France and Germany, morning listeners are hearing a new voice. This one takes us dial riding direct to the shores of the Zuyder Zee.

From the tulip land of dikes and windmills drift strange programs that seem to carry all the enchantments that would greet the eye if we were strolling there in person.

Fans are still in doubt as to the call-letters of the Dutch signal, although the programs apparently are radiated by the Netherland commercial link, PJC.

However, many of the telephone stations use ghost calls when transmitting program entertainment. What those are that are being used by Holland we do not know.

For those who like to go globe-trotting simply for the thrill of distance and care little for the program angle, the 'phone links act as magic carpets.

Before noon most any of the sharp, clear waves found on the bands below 23 meters (above 13-megs.) will turn out to be flashing from nations far away.

Local stations aren't heard well on the higher frequency end of the dial, so chances are that the stronger a signal the more distance it will be covering. At least such generally holds good for the wandering waves up to 2000 or 4000 miles away.

Most any time during daylight hours one can find the trans-Atlantic terminal at Rugby, England, working on 24.69-meter GBS. Or perhaps it may be the powerful beam of GBB on 22 meters (13.58 megs.).

Other commercial-outlets apt to be heard, really too numerous to mention, may be seeping from

(Continued on Page 7)

How you can get into Broadcasting



BROADCASTING offers remarkable opportunities to talented men and women—if they are trained in Broadcasting technique. It isn't necessary to be a "star" to make good money in Broadcasting. There are hundreds of people in Broadcasting work who are practically unknown—yet they easily make \$3000 to \$5000 a year while, Famous Radio of course, "stars" often make \$15,000 to \$50,000 a year.

If you have a good speaking voice, can sing, act, write, direct or sell, the Floyd Gibbons School will train you—right in your own home in your spare time—for the job you want. Our free book, "How to Find Your Place in Broadcasting," tells you the whole fascinating story of the Floyd Gibbons Course—how to prepare for a good position in Broadcasting—and how to turn your hidden talents into money. Send coupon today.

Floyd Gibbons School of Broadcasting, 2000 14th St. N. W., Dept. 4P85, Washington, D. C.

Without obligation send me free booklet "How to Find Your Place in Broadcasting" and full particulars of your home study Course. Name Age Address City State

STATION DIRECTORY Page 4

Sunday, October 28 - Geraldine Farrar, NBC-WJZ Chain, 8 P.M.

Highlights

- P.M.**
- 2.30—Radio Theatre, NBC-WJZ
 - 3.00—New York Philharmonic, Otto Klemperer, conductor, CBS-WABC
 - 4.00—Kansas City Philharmonic Orchestra, NBC-WEAF
Rev. Charles E. Coughlin, WLW WOR
 - 7.00—Jack Benny, Mary Livingstone, NBC-WJZ
 - 7.30—Joe Penner, NBC-WJZ
 - 8.00—Detroit Symphony Orchestra, Victor Kolar conducting, CBS-WABC
Symphony Orchestra, Geraldine Farrar, Walter Damrosch, conductor, NBC-WJZ
 - 9.00—Alexander Woolcott, CBS-WABC
 - 9.30—Headliners, Will Rogers, Frank Parker, CBS-WABC
 - 10.00—Edmund Lowe, Victor McGlaglen, NBC-WEAF

- 1.45 P.M. EST; 12.45 CT
Melody's Garden, WFLA
Pat Kennedy, tenor, WABC WCAU WHAS KMOX
Geraldine Gutesman, pianist, WPG
Whistler and Dog, WGN
- 2 P.M. EST; 1 CT
Treasure Chest, Ralph Kirbery, baritone, James Meighan, Harold Levy's Orchestra, WFAF WEWI WGY WLW WFLA, 30 m.
- Anthony Frome, poet prince, WJZ WBZ Alline Fenstriss, violinist, WSM
Lazy Dan, the Minstrel Man, WABC WHAS WCAU KMOX, 30 m.
- Rodney Fitzsimons, baritone, WPG
Forum Hour, WOR, 30 m.
- Ensemble, WGN
Rodney Entertainers, WMCA
- 2.15 P.M. EST; 1.15 CT
Bob Becker's Fireside Dog Chats, WJZ WBZ KDKA WFLA WGAR
Will Allen Dromgoole Memorial Service, WSM
The Wandering Poet, WPG
Maytime Parade, WMCA
Organ, WGN
- 2.30 P.M. EST; 1.30 CT
Gene Arnold's Commodores, WFAF WEWI WGY, 30 m.
- Radio Theatre, "The Barker," Walter Huston, WJZ WBZ WHAM WBAL KDKA WLW WFLA, 1 h.
- Fred Waller, tenor, WSM, 30 m.
- Dramatizations, WGAR, 1 h.
- Imperial Hawaiian Band, WABC WCAU WHAS KMOX, 30 m.
- Ministerial Union Program, WPG, 30 m.
- Violin, Piano, WOR, 30 m.
- Three Little Funsters, WMCA, 30 m.
- Ensemble, WGN

A Congenial Conference



VICTOR KOLAR, conductor of the Detroit Symphony Orchestra, and HENRY FORD meet after one of the weekly broadcasts of the Detroit Orchestra on Sunday evenings from 8 to 9.

- An American Fireside, WJZ WBZ KDKA WHAM WBAL, 30 m.
- Mel Emerson's Orchestra, WGAR, 30 m.
- Dramatic Guild, WABC WCAU WPG WHAS, 30 m.; KMOX, 15 m.
- Estelle Lieblich's Operatic Miniatures, WOR, 30 m.
- The Wandering Poet, WPG
Arthur Warren's Orchestra, WMCA WIP, 30 m.
- Bob Pacelli's Orchestra, WGN
- 10.45 P.M. EST; 9.45 CT
Asher and Little Jimmy, WHAS Sports, KMOX
Dream Ship, WGN
- 11 P.M. EST; 10 CT
K-7 Spy Story, WFAF WEWI WGY, 30 m.
Roxanne Wallace, Al and Le Reiser, WJZ WHAM WFLA KDKA WSM (news, 11.10)
- Weather reports, news, Eventide Singers, WBZ, 30 m.
- News, Drama, WLW, 30 m.
- Ted Rollin's Orchestra, WGAR
Little Jack Little's Orchestra, WABC WCAU WHAS, 30 m.; KMOX, 15 m.
- Steel Pier Orchestra, WPG, 30 m.
- Weather, Moonbeams, WOR, 30 m.
- Voice of Romance, WMCA
Ted Weems' Orchestra, WGN

- 11.15 P.M. EST; 10.15 CT
Jesse Crawford, organ, WJZ WHAM KDKA WSM WFLA
- Bene Beecher's Orchestra, WGAR
Sports and Orchestra, KMOX, 30 m.
- Dream Ship, WGN
Leon Friedma'n Orchestra, WMCA
- 11.30 P.M. EST; 10.30 CT
News, Charlie Davis' music, WFAF WEWI WGY WFLA WSB, 30 m.
- Henry King's Orchestra, WJZ WHAM KDKA WGAR, 30 m.
- Studio program, WBZ, 30 m.
- Castle Farm Orchestra, WLW, 30 m.
- Sunday Night Serenade, WSM
Leon Belasco's Orchestra, WABC WCAU WPG WHAS, 30 m. (KMOX from 11.45)
- Florence Richardson's Orchestra, WOR, 30 m.
- Blue Rhythm Band, WMCA, 30 m.
- Wayne King's Orchestra, WGN
- 11.45 P.M. EST; 10.45 CT
Jan Garber's Orchestra, WGN, 30 m.
- 12 M. EST; 11 P.M. CT
Will Osborne's Orchestra, WFAF WGY WSM, 30 m.
- Mills Blue Rhythm Band, WJZ WBZ WHAM KDKA, 30 m.
- Dance Orchestra, WLW, 30 m.
- Paul Sabini's music, WABC WCAU, 30 m.
- Jimmy Joy's Orchestra, WHAS
Joe Stovel's Orchestra, KMOX
Phil Lynch's Orchestra, WOR, 30 m.
Day's End, WMCA, 30 m.
- 12.15 A.M. EST; 11.15 P.M. CT
Mike Child's Orchestra, KMOX
Ted Weems' Orchestra, WGN
- 12.30 A.M. EST; 11.30 P.M. CT
Don Pedro's Orchestra, WFAF WGY WSM 30 m.
- Stan Myer's Orchestra, WJZ WBZ WHAM KDKA, 30 m.
- Red Nichols' Orchestra, WLW, 30 m.
- Frank Dailey's Orchestra, WABC WCAU KMOX, 30 m. (WPG at 12.45)
- Hugie Shea's Orchestra, WHAS
Benny Goodman's Orchestra, WMCA, 30 m.
- Julie Wintz's Orchestra, WOR, 30 m.
- Kay Kyser's Orchestra, WGN
- 1 A.M. EST; 12 M. CT
Coney Island Orchestra, WLW, 30 m.
Miller Welch's Music, WHAS, 30 m.
Moon River, WLW, 30 m.
- Willie Bryant's Orchestra, WMCA, 30 m.
Bob Pacelli's Orchestra, WGN, 30 m.
- 1.30 A.M. EST; 12.30 CT
Teddy Hill's Orchestra, WMCA, 30 m.

(All programs are listed in Eastern Standard Time. Central Time is one hour earlier.)

- 10.30 A.M. EST; 9.30 CT
Mexican Typica Orchestra, Hector De Lard, baritone, WFAF WEWI WGY, 30 m.
- Music and American Youth, A. Walter Kramer, WJZ WBZ WHAM KDKA WBAL WLW WFLA WGAR, 30 m. (WSM, 15 m.)
- News, Patterns in Harmony, WABC WCAU WPG WHAS KMOX
Sunday Morning Concert, WGN, 1 h., 30 m.
- 10.45 A.M. EST; 9.45 CT
Church Service, WSM, 45 m.
- Between the Bookends, WABC
Robert Place, poems, WPG
- 11 A.M. EST; 10 CT
News, The Vagabonds, WFAF
Old South Church Service, WEWI, 1 h., 15 m.
- News, Church Service, WGY, 1 h.
- News, Morning Musicale, Josef Stopak, violinist, WJZ WBZ WFLA, 30 m.
- Church Service, WHAM, 1 h., 30 m.
- Church Service, KDKA, 1 h., 15 m.
- Candle Tabernacle 1400-Voice Choir, WLW, 30 m.
- Children's Hour, WABC, 1 h.
- Church Service, WHAS, 30 m.
- Northwestern University Program, WGN, 30 m.

- 2.45 P.M. EST; 1.45 CT
Tito Guizar, WABC WCAU WHAS Tenor, WGN
- 3 P.M. EST; 2 CT
Sally of the Talksies, WFAF WEWI WGY WSM, 30 m.
- New York Philharmonic Symphony Orchestra, Otto Klemperer, conductor, Janacek's "Sonatina," Overture to Weber's "Der Freischutz," Beethoven's Seventh Symphony, WABC WCAU WHAS KMOX, 2 h. (WPG at 4.30)
- Gospel Message, WPG
"How to Be Happy Though Human," WOR
Rigo Sauti, WMCA
Football, Cincinnati vs. Chicago Bears, WGN, 2 h., 15 m.
- 3.15 P.M. EST; 2.15 CT
The Amateurs, WOR, 30 m.
- Concertos, WMCA, 30 m.
- Ensemble, WGN
- 3.30 P.M. EST; 2.30 CT
Musical Romance, Don Mario Alvarez, Harry Jackson's Orchestra, Jimmy Fidler, WFAF WEWI WGY WLW, 30 m.
- National Vespers, Dr. Harry Emerson Fosdick, WJZ WBZ WGAR, 30 m.
- Vespers, KDKA, 30 m.
- 3.45 P.M. EST; 2.45 CT
Voice of Gold, WOR
Oxford Male Quartet, WMCA
- 4 P.M. EST; 3 CT
Kansas City Philharmonic Orchestra, De Wolf Hopper, narrator, WFAF WEWI WGY WSM, 30 m.
- Temple of Song, Chicago A Capella Choir, Rossini's "Stabat Mater," Ruth Lyon, soprano, WJZ WHAM WBAL KDKA WFLA WSM WGAR, 30 m. (WBZ from 4.15)
- Southern Reveries, WBZ
Rev. Charles E. Coughlin, WOR WLW, 1 h.
Municipal Symphony Orchestra, WMCA WIP, 1 h.
- 4.30 P.M. EST; 3.30 CT
John B. Kennedy, "Looking Over the Week," WFAF WEWI WGY
"The Land of Beginning Again," WJZ WBZ WHAM KDKA WBAL WFLA 30 m.
- "House By the Side of the Road," WSM, 30 m.
- String Quartet, WGAR, 30 m.
- 4.45 P.M. EST; 3.45 CT
Dream Drama, Arthur Allen, Parker Fenelly, WFAF WEWI WGY
"That Reminds Me," WGN
- 5 P.M. EST; 4 CT
Sentinels Serenade, Charles Sears, tenor, Mary Stele, contralto, WFAF WEWI WGY WSM, 30 m.
- "Roses and Drums," "Travelling Show," WJZ WBZ WHAM KDKA WLW WGAR, 30 m.
- "Open House," Freddy Martin's Orchestra, Virginia Heath, WABC KMOX, 30 m.
- Rodney Fitzsimons, WPG
Gus Steck's Orchestra, WOR
Young People's Church, WMCA, 1 h.
- American Musicale, WHDH, 30 m.
- Allan Grant, pianist, WGN
- 5.15 P.M. EST; 4.15 CT
Anita Metzger, readings, WPG
Arthur Oberg, tenor, WGN
- 5.30 P.M. EST; 4.30 CT
"The House By the Side of the Road," Tony Wons, Gina Vanna, soprano, Ulderico Marcelli's Orchestra, WFAF WEWI WGY, 30 m.
- Radio Explorers' Club, James L. Clark, WJZ WBZ WHAM KDKA WGAR
Smilin' Ed McConnell, WLW WSM, 30 m.; WOR, 15 m.
- Promenade, WFLA, 50 m.
- Frank Crumit and Julia Sanderson, WABC WCAU WHAS KMOX, 30 m.
- Nick Nickerson, songs, WPG
Baritone, WGN, 30 m.
- 5.45 P.M. EST; 4.45 CT
Albert Payson Terhune, dog drama, WJZ WBZ WHAM KDKA WGAR
Coleman Jubilee Singers, WOR
Jimmy Allen's Adventurers, WOR
- 6 P.M. EST; 5 CT
Catholic Hour, Mediaevalists Choir, WFAF WEWI WGY WSM WFLA, 30 m.
- Heart Throbs of the Hills, WJZ WGAR Weather, WBZ
Those Three Girls, KDKA
"Music by Gershwin," Dana Suesse, Clap "Yo' Hands," Liza, WABC WHAS KMOX, 30 m.
- Beth Evans, soprano, WPG
Uncle Don, WOR, 30 m.
- Radio Party, WMCA, 30 m.
- String Trio, WGN, 30 m.
- 6.15 P.M. EST; 5.15 CT
Jolly Coburn's music, WJZ WBZ WHAM KDKA
Disabled Veterans' program, WPG
- 6.30 P.M. EST; 5.30 CT
Frank Simon's Band, My Hero; Waltz of the Flowers; Flirtations; Les Chasseresses; Moments Musical; Pride of the Illinois, WFAF WGY WLW, 30 m.
- Fluifettes, WEWI

- Grand Hotel, Anne Seymour, WJZ WBZ WHAM KDKA WBAL WGAR, 30 m.
- Sacred Quartet, WSM
Smilin' Ed McConnell, WABC WCAU WHAS KMOX
- Crusade Club Chorus, WPG
Gabriel Heatter, news commentator, WOR
Theo Karle, concert orchestra, WMCA WIP, 30 m.
- Wayne King's music, WGN
- 6.45 P.M. EST; 5.45 CT
Andrew Jacobson's Orchestra, WEWI, 30 m.
- Ross Fenton Orchestra, WSM
Voice of Experience, WABC WCAU WHAS KMOX
- Lynette Grahler, WPG
Conrad and Tremont, WOR
Jan Garber's Music, WGN, 30 m.
- 7 P.M. EST; 6 CT
Guglielmo Marconi speaking from Rome, WFAF WGY
Jack Benny, Frank Parker, Mary Livingstone, Don Bestor's Orchestra, WJZ WBZ WHAM KDKA WSM WFLA, 30 m.
- Musical Variety, WLW, 30 m.
- California Melodies, Raymond Paige's Orchestra, WABC WPG, KMOX, 30 m.
- Comedy Stars of Hollywood, WCAU
Herbert Koch, organ, WHAS
Israel Among the Nations, WMCA WIP
Chamber Music, WOR, 45 m.
- Palmer House Ensemble, WGN
- 7.15 P.M. EST; 6.15 CT
Uncle Ezra, WFAF WGY
Salute, WEWI
Current Jewish events, WMCA
Kay Kayser's Orchestra, WGN
- 7.30 P.M. EST; 6.30 CT
Quena Mario, Graham McNamee, Baelata; The House By the Side of the Road; Run, Mary Run; My Old Kentucky Home, WFAF WGY
Garden talk, WEWI, 30 m. (Musical Turns at 7.50)
- Joe Penner, Harriet Hilliard, Ozzie Nelson's Orchestra, Put On Your Old Gray Bonnet; Here Come the British; Sweetie Pie; WJZ WBZ WHAM KDKA WBAL WSM WFLA WGAR, 30 m.
- Family Theatre, Buddy Rogers, Jeanie Lang, WABC WCAU KMOX, 30 m.
- Early Evening Revue, WHAS
Concert Hour, WPG
Songsters, WMCA WIP
Bob Becker, WGN
- 7.45 P.M. EST; 6.45 CT
Wendell Hall, Congratulate Me; Honey; Poor Butterfly; It's My Night to Howl; When Summer Is Gone; When the Autumn Leaves of Life Begin to Fall; Lullaby of the Leaves, WFAF WGY
Baritone, WOR
- Three Little Funsters, WMCA
Book Review, WGN
- 8 P.M. EST; 7 CT
Eddie Cantor, Rubinoff's Orchestra, WFAF WGY WLW WSM WFLA, 1 h.
- Concert, Ruby Newman, Del Castillo, WEWI, 1 h.
- Symphony Concert, Walter Damrosch conducting, Geraldine Farrar, guest, WJZ WBZ WHAM KDKA WGAR, 1 h.
- Detroit Symphony Orchestra, Victor Kolar, conductor, Rosa Tentoni, One Fine Day, from "Madame Butterfly"; Manella Mia; Elegie; Song of Love, WABC WHAS KMOX, 1 h.; WOR, 30 m.
- Dismal Swamp, WMCA, 30 m.
- Dance Orchestra, WGN, 30 m.
- 8.30 P.M. EST; 7.30 CT
Los Chicos, WOR, 30 m.
- Strickland Gillilan, WMCA
Bridge Talk, WGN, 30 m.
- 8.45 P.M. EST; 7.45 CT
Fur Trappers, WCAU
Pan Americans, WMCA, 30 m. (news at 9.10)
- 9 P.M. EST; 8 CT
Manhattan Merry-Go-Round, Andy Sanella's music, WFAF WGY, 30 m.
- Sunday Night Party, Roland Winters, Buddy Clark, Rakov's music, Elizabeth Ross, WEWI, 30 m.
- Charles Previn's Orchestra, Olga Albani, WJZ WBZ WHAM KDKA WBAL WLW WSM WFLA WGAR, 30 m.
- Alexander Woolcott, the Town Crier, Robert Armbruster's music, WABC WHAS, 30 m.
- Harry Salter's Orchestra, WOR, 30 m.
- Palmer Clark's Orchestra, WGN, 30 m.

- Walter Winchell, WJZ WBZ WHAM WBAL KDKA WLW WGAR
Headliners, Will Rogers, Bill Corum, Oscar Bradley's Orchestra, WABC WCAU WHAS KMOX, 30 m.
- Hotel Traymore Orchestra, WPG, 30 m.
- "Vignettes," WOR, 30 m.
- Sunday Evening Club, WGN, 30 m.
- 9.45 P.M. EST; 8.45 CT
Drama, King and Flynn, songs, WJZ WBZ WHAM KDKA WGAR
Unbroken Melodies, WLW
- 10 P.M. EST; 9 CT
Hall of Fame, Edmund Lowe, Victor McGlaglen, Jimmy Grier's Orchestra, WFAF WEWI WGY WLW, 30 m.
- Armand Girard, baritone, WJZ WHAM KDKA WFLA WGAR
Paradise Islanders, WBZ
Wayne King's Orchestra, WABC WCAU WHAS KMOX, 30 m.
- Harold Stephens, tenor, WPG
Russian Gypsy music, WOR, 30 m.
- Jolly Russians, WMCA WIP, 30 m.
- News, WGN
- 10.15 P.M. EST; 9.15 CT
L'Heure Exquise, Beau Soir; Amaryllis; Valse, WJZ WBZ WFLA
County Medical Society, WHAM
Y. M. C. A. Talk, KDKA
Moses Cleveland's Album, WGAR
Hawaiian Dreams, WPG
Kay Kyser's Orchestra, WGN
- 10.30 P.M. EST; 9.30 CT
Jane Froman, Don McNeill, Modern Choir, Frank Black's Concert Dance Orchestra, WFAF WEWI WGY WSM WLW WFLA, 30 m.

Station Directory

Station	Chain	K.C.	Watts	Location
CFRB	CRC & CBS	690	10,000	Toronto
CKAC	CRC & CBS	750	5,000	Montreal
KDKA	NBC	980	50,000	Pittsburgh, Penn.
KMOX	CBS	1090	50,000	St. Louis, Mo.
KSD	NBC	550	500	St. Louis, Mo.
KYW	NBC	1020	10,000	Chicago, Ill.
WAAB	CBS & YN	1410	500	Boston
WABC	CBS Key	860	50,000	New York
WBAL	NBC	1060	10,000	Baltimore
WBMM	CBS	770	25,000	Chicago, Ill.
WBOS		920	500	Needham
WBT	CBS	1080	25,000	Charlotte, N. C.
WBZ	NBC	990	50,000	Boston
WCAU	CBS & DIX	1170	50,000	Philadelphia
WCCO	CBS	810	50,000	Minneapolis, Minn.
WCSC		1360	500	Charleston, S. C.
WCNH	NBC & NEN	940	1,000	Portland, Me.
WDRC	CBS & YN	1330	1,000	Hartford
WEAF	NBC Key	660	50,000	New York
WEAN	CBS & YN	780	500	Providence
WEWI	NBC & NEN	590	1,000	Boston
WFNR	NBC	870	50,000	Chicago, Ill.
WFEA	CBS & YN	1430	500	Manchester, N. H.
WFLA	NBC	620	25,000	Clearwater, Fla.
WGAR	NBC	1450	1,000	Cleveland, Ohio
WGN	QG	720	50,000	Chicago
WGST	CBS	890	500	Atlanta, Georgia
WGY	NBC	790	50,000	Schenectady, N. Y.
WHAM	NBC	1150	50,000	Rochester, N. Y.
WHAS	CBS & DIX	820	50,000	Louisville, Ky.
WHDH	ABS	830	1,000	Boston
WHB		740	250	Portsmouth, N. H.
WHK	CBS	1390	2,500	Cleveland, Ohio
WICC	CBS & YN	600	250	Bridgetown, Conn.
WIP	ABS	610	1,000	Philadelphia
WJAR	NBC & NEN	890	500	Providence
WIR	NBC	750	10,000	Detroit, Mich.
WISV	CBS	1460	10,000	Washington, D. C.
WJZ	NBC Key	760	50,000	New York
WLZ	CBS & YN	620	500	Bangor, Maine
WLH	YN	1370	100	Lowell, Mass.
WLW	NBC & QG	700	500,000	Cincinnati
WMAQ	NBC	670	5,000	Chicago, Ill.
WMAS	CBS & YN	1420	100	Springfield, Mass.
WMCA	ABS Key	570	500	New York
WMEX		1500	250	Boston, Mass.
WNAC	CBS & YN	1230	1,000	Boston
WNBH	YN	1310	250	New Bedford
WNBX		1260	250	Springfield, Vermont
WOAI	NBC	1190	50,000	San Antonio, Tex.
WOAM	CBS	560	1,000	Miami, Florida
WOR	OG	710	5,000	Newark, N. J.
WORC	CBS & YN	1280	500	Worcester
WSP	NBC	740	50,000	Atlanta, Georgia
WPG	CBS	1100	5,000	Atlantic City, N. J.
WSM	NBC	650	50,000	Nashville, Tenn.
WSMB	NBC	1320	500	New Orleans, La.
WTAG	NBC & NEN	580	500	Worcester, Mass.
WTAM	NBC	1070	50,000	Cleveland, Ohio
WTAR	CBS	890	500	Norfolk, Va.
WTIC	NBC & NEN	1040	50,000	Hartford, Conn.
WWNC	NBC	570	1,000	Asheville, N. C.
WXYZ	ABS & QG	1240	1,000	Detroit, Mich.

CHAINS: NBC, National Broadcasting Company; CBS, Columbia Broadcasting System; YN, Yankee Network; DIX, Dixie Network; ABS, American Broadcasting System; CRC, Canadian Radio Commission; NEN, New England Network; QG, Quality Group.

Radio Lane

By Jimmy J. Leonard

BETTY BARTHELL will display her most cherished fan message on request. It is a radiogram received after singing on the BYRD program.

It reads: "Thanks for the songs and conversation.— See you in 1935.—Love and kisses," Signed, "The Knights of the Grey Underwear."

KATE SMITH should have been a housewife. She alone did all the interior decorating in her apartment. She has every known new implement for preparing, cooking and serving meals. It relaxes the nerves, she insists.

RUDY VALLEE is practically fed up with all the hubbub accorded him wherever he ventures.

He was a virtual hermit during his train ride across the country. Upon reaching Hollywood he slipped through a waiting throng to some hideout. He made the astounding declaration that he would stay with the movies for all time—if they ask him.

VAUGHN de LEATH, the girl who made the electrifying comeback, is going to play in a Broadway revue this Winter.

MARIE MURRAY, Jenny spot singer and one of the finest contraltos in Boston, has been walking "on eggs" because Dr. KOUSSEVITZKY has asked her to sing with the Boston Symphony on November 2 and 3.

There is a strange rumor making the usual rounds; now that CLIFF HALL has parted with "The Baron" they say he is destined to replace JIMMY WALLINGTON on the Sunday Coffee spot.

But don't forget that it was CANTOR who made WALLINGTON and perhaps it will be only CANTOR who will do the replacing.

But why? Another surprising, well, let's say rumor, since it isn't official: CHARLES WINNINGER is priming his writing hand in anticipation of signing a radio contract. They say he'll be on when snow flurries.

BING CROSBY is ailing from an appendicitis eruption. He is using the ice bags constantly. FRED WARING's performance is going even better. Must be that his young daughter, DIXIE, influences him. She's called DIXIE because she was born when FRED was playing a one-night stand in ole Virginny. She's a month and three weeks old.

As LES TROY would say, here's a Pharmaceutical Note. Whenever LAWRENCE TIBBETT gets his feet wet and then snuffles, he stands on his hands. This loosens up the congestion when the blood makes a sudden rush to the head, he explains. Methinks I'll have to keep this cold; I'm getting old.

After five years of animosity between WILL OSBORNE and NBC following a tiff with RUDY VALLEE, WILL will make amends with this chain. F. J. CRONIN, staff organist, just celebrated his third birthday with the Yankee Network.

BUDDY ROGERS is playing an engagement in Philly. He commutes to New York for his programs.



BETTY BARTHELL

MICROPHONE



VOLUME III Saturday, October 27, 1934 NUMBER 43

Publisher, JOHN K. GOWEN, Jr. Business Manager, PHILIP N. HOBSON

Editor, G. CARLETON PEARL Managing Editor, MORRIS HASTINGS

A weekly newspaper, The MICROPHONE is published every Saturday at Boston, Massachusetts, by The MICROPHONE, Inc.

Entered as second class matter August 11, 1933, at the post office at Boston, Massachusetts, under the Act of March 3, 1879.

The MICROPHONE will not be responsible for unsolicited manuscripts unless they are accompanied by return postage.

Subscription for six months, \$1; for one year, \$1.50, postpaid. Single copies, five cents each.

Advertising rates on application to the Business Manager.

Offices, No. 34 Court Square, Boston, Massachusetts.

Telephones (connecting all departments) LAFayette 2860 and 2861.

Silly Propaganda

NOT the least silly of the recent campaign of vilification against the radio is the suggestion that the President of the United States will "rely less upon radio broadcasting than in the past if he follows the advice of his close friends."

He will, according to Editor & Publisher, "go to the Nation with his periodic discussions of important questions through the columns of the newspapers."

His advisers, Editor & Publisher states, "are concerned lest his voice become too common on the air lanes." They are reportedly "alarmed because already he has been "on the air 36 times since he became President" and has been "before the microphone more often than Hoover or Coolidge."

This example of newspaper-inspired propaganda is just plain rot. The man who wrote it knew it was rot, and the editor who printed it knew it was rot.

The voice of the President of the United States can never become too common. The people of this country are keenly interested in what he says, and it means a great deal more to them to hear him say it than to read it later in a newspaper—a privilege that will not be denied them in any event.

Concerning "Giving Newcomers A Break"

By DICK TEMPLETON
New York Correspondent

PERHAPS your agent is becoming somewhat of a curmudgeon, but this business of "giving newcomers a break" on radio programs is a decided pain in the neck.

It strikes this militant observer as being unknowingly cruel. The path uphill for the performer who falls a little short of radio genius is generally one that ends in frustration. And it has been my theory—and one I worked when I managed a big radio station—that it is far better to tell JOE DOAKES that he is an ordinary, dime-a-dozen performer and get him back to selling sheets and pillow cases than it is to let him think he is going to chase MELTON and PARKER and MARTIN right out of their jobs.

Dangling a will o' the wisp in front of a mediocre singer's nose is never a kindness.

FREDDY MARTIN, in his "Open House" series, is giving a network opportunity to local acts that have made good in their individual cities. And the immortal ROXY, with no great promises to any talent, already has quietly dug up one or two finds for his present programs, with a minimum of shouts.

They make good for ROXY in direct proportion to their abilities to please listeners. He rewards them with money, not with opportunities.

When they're worth \$500 a week, ROXY pays 'em that. And he doesn't talk much about finds.

For his new talent is really not "discovered" material; it is young people who have been climbing up the vaudeville and musical comedy ladders and who, in direct competition with real professionals, have measured up to the mark.

Nobody knows better than an acknowledged radio star what a tough road the up-hill battle to recognition is. It is just that these "new talent" searches invariably result in a night of glory for some dub who in most cases never gets any farther.

A smart horse player bets on an 8-to-5 shot far more often than he does on a 20-to-1 shot. The reason is that the 8-to-5 chance comes home in front far more often.

And it is just a little bit cruel to let some outsider think he is an 8-to-5 shot when any bookmaker at any track in America would lay 1000 to 1 against his chances and sleep peacefully without any worry about having to pay off on the long shot.

Every performer has his "old reliable," a piece of music, a song that audiences have come to associate with his name. For instance, a TOSCANINI season with the Philharmonic is not complete until the famous Italian maestro has conducted "The Pines of Rome." LAWRENCE TIBBETT is never allowed to leave the concert plat-

form without first singing "De Glory Road." Radio stars, too, have their especial "old reliables," which fans have come to know and repeatedly request.

Take LOIS BENNETT, soprano star of the musical, "The Gibson Family." "The Moon and I" from the "Mikado" became LOIS' very own song when she starred in the GILBERT and SULLIVAN revival on Broadway a few years ago, and the comely soprano never gets very far on a new radio series before requests for it come pouring in and LOIS has to oblige.

JACK BENNY, always has to do several "Grand Hotel" skits on every series—at fans' requests. And MARY LIVINGSTONE always has to do her MAE WEST impersonation.

Apparently nobody can sing "Smoke Gets in Your Eyes" like tenor FRANK PARKER. For PARKER and the song have become synonymous and PARKER has already sung the song many times.

Studiosity

By Les Troy

A TALE of how the frosty thrills broadcast from the BYRD Expedition at Little America saved two men from freezing to death in New York State in October comes to my ears, like, may I say, a breath from an iceberg.

Believe it or not (nee RIPLEY), WALTER NIELSON and JOHN SORENSEN, of Penn Yan, New York, managed to get locked in the refrigerator of the HOGAN Meat Market in that



JACK BENNY

town, after everyone else had gone home. The two young men spent some time jumping up and down to keep warm, shouting at intervals for help.

Meanwhile, Mrs. SORENSEN got to wondering why her husband didn't come home to listen to the BYRD broadcast as he had been in the habit of doing. She got pretty

worried and, after waiting a half hour, she went down to the market to see what had happened to JOHN.

When she got there she heard the dim shouts of the imprisoned and now nearly congealed men. Needless to say, they were rescued and suffered, if this were a daily paper, no ill effects.

JACK BENNY, who, by the way, is now appearing in a movie, "Transatlantic Merry-Go-Round," in Boston, and his troupe including MARY LIVINGSTON, FRANK PARKER and DON BESTOR are, as you probably know, engaged in selling fruit juice crystals. BENNY was preparing his program the other day and didn't want to be disturbed.

PARKER went to the apartment and asked for BENNY.

"Oh, he's taking a bath," said Mary, his wife.

"But I hear a typewriter going," said Parker.

"I forgot to tell you," said Mary, "he's busy writing a sea story for his program."

Comes a story about ALEXANDER WOOLLCOTT being asked what he thought of radio or something

"I'm told," said Mr. Woolcott, "that radio is an instrument of the home. But I haven't been home since I was 12 years old. So I have to stick to an itinerary of my friends' homes in order to hear my favorite radio shows."

"I understand some of my friends are getting up a Woolcott Home Fund so they'll have a free evening now and then."

The worst pun we have heard for a long time comes from BILLY JONES, of the JONES and HARE combination who went, he said, fishing for tunas.

To Subscribe to The Microphone

Fill out the blank and mail with cash, money order or check to The MICROPHONE, 34 Court Square, Boston, Mass.

(Please print)

Name.....

Street.....

City or Town.....

State.....

(Subscription: \$1 for six months, \$1.50 per year, postpaid)

Monday, October 29 - America in Music on NBC-WJZ at 10 P.M.

Highlights

- A. M. 11.00—United States Navy Band, NBC-WFAF
P.M. 8.30—Gladys Swarthout, William Daly's Orchestra, NBC-WFAF
8.45—Short-wave program from the "Seth Parker," Phillips Lord, NBC-WJZ
9.00—Frank Parker, NBC-WFAF
Minstrel Show, NBC-WJZ
Rosa Ponselle, CBS-WABC
9.30—Joe Cook, NBC-WFAF
"The Big Show," CBS-WABC
10.00—Gene Arnold, NBC-WFAF
"America in Music," NBC-WJZ

(All programs are listed in Eastern Standard Time. Central Time is one hour earlier.)

- 10 A.M. EST; 9 CT News, Breen and de Rose, WFAF WGY Musical Variety, WEEL
Josephine Gibson, WJZ WBZ WBAL KDKA WSM WFLA WHAM WGAR
News and Harmonies in Contrast, WABC WCAU
News and Sanders Sisters, WHAS
"Blues" singer, WLW
Home Hour, WPG, 1 h.; News at 10.30 World Observer, WNBX
10.15 A.M. EST; 9.15 CT Clara, Lu 'n' Em, WFAF WEEL WGY WLW WTAM WGN WSM WSB
Holman Sisters, piano duo, WJZ WBZ WHAM WGAR
Sammy Fuller, KDKA
Morning Topics, WFLA
Bill and Ginger, WABC WCAU
Dolly Dean, WHAS
Town Crier, WNBX
10.30 A.M. EST; 9.30 CT Land of Beginning Again, WFAF
Market Basket, WGY
Bridge talk, WEEL
Live Stocks, news, WLW
Today's Children, drama, WJZ WBZ WHAM WBAL WFLA WGAR
Radio Kitchen, WSM, 30 m.
"All About You," Harold Sherman, WABC
News, piano, WCAU WHAS
Household Chat, WNBX
10.45 A.M. EST; 9.45 CT Morning Parade, WFAF WEEL
Johnny Marvin, WGY
News, NBC Radio Kitchen, WJZ KDKA WFLA WGAR
News, Musicale, Highway Safety talk, WBZ
Household Hour, WHAM, 30 m.
Violin, WLW
Connie Gates, WABC WCAU WHAS, 30 m.
Poetry, WNBX
11 A.M. EST; 10 CT U. S. Navy Band, WFAF WGY WSM WFLA, 1 h. (WEEL, 40 m. from 11.15; News at 11.55)
Friendly Kitchen, WEEL
The Wife Saver, WJZ WGAR
Women's Clubs, news, WBZ
Contract bridge talk, WHAM
Uncle Tom and Betty, KDKA
Ohio Federation of Women's Clubs, WLW
Mobilization for Human Needs, WNBX
11.15 A.M. EST; 10.15 CT Tony Wons, WJZ WHAM WGAR
Metropolitan Theatre program, WBZ, 30 m.
Texans, WLW
11.30 A.M. EST; 10.30 CT The Melody Mixers, WJZ WLW, 30 m. (WGAR, 15 m.)
"Contract Bridge Made Easy," E. Hall Downes, WABC WCAU WHAS
Wandering Post, WPG
Travel Talk, WNBX
Memory's Garden, WABC
11.45 A.M. EST; 10.45 CT MSG Farm Forum, WBZ
Gene LaValle, WGAR
The Cadets, WABC
Bud Shays, songs, WCAU
Shades of Harmony, WHAS
12 N. EST; 11 A.M. CT Marion McAfee, soprano, WFAF WEEL Banjoers, WGY
Fields and Hall, piano duo, WJZ WSM WHAM WGAR
Market Reports, KDKA
Weather, The Monitor Views the News, WBZ
Prairie Symphony, WLW
Variety, WFLA
The Voice of Experience, WABC WCAU WHAS
Home Sweet Home, WPG
Bud Ramey, WOR
Bob Fallon's Orchestra, WMCA, 30 m.
Tom, Dick and Harry, WGN
Studio Orchestra, WNBX
12.15 P.M. EST; 11.15 A.M. CT Honeyboy and Sassafras, WFAF WEEL
Martha and Hal, WGY
Charles Sears, tenor, WJZ WSM KDKA WGAR
Weather; Minute Manners, WBZ
Hill-Billy Songs, WHAM
Variety, Live Stocks, WLW
Betty Barthell, WABC WCAU WHAS WPG
Common Sense, WOR
Betty, Jean, Jim, WGN
12.30 P.M. EST; 11.30 A.M. CT Merry Madcaps, WFAF, 30 m.
Stocks, markets, WEEL
Farm Program, WGY, 30 m.
National Farm and Home Hour, WJZ WBZ WHAM KDKA WLW WSM WFLA, WGAR, 1 h.
Dick Messner's Orchestra, WABC WCAU, 30 m. (WPG WHAS at 12.45)
University of Louisville, WHAS
Phil Lynch's Orchestra, WOR, 30 m.
Here's How, WMCA
Markets, WGN
12.45 P.M. EST; 11.45 A.M. CT This and That, organ, song, WEEL, 25 m. (Kitchen talk at 1.10)

Supper Time



DOROTHY PAGE is soloist in JAN GARBER'S Supper Club broadcasts over the NBC-WJZ chain Mondays at 8 P. M.

- ERA Orchestra, WBZ, 30 m.
Market Reports, KDKA
Organ, WHAM
Betty and Bob, WLW
Ralph Waters, WFLA
Dr. Royal S. Copeland, WABC WHAS, 25 m. (WPG at 4.45)
Stock quotations, WPG
"Town Crier," Robert Reud, WOR
Century of Progress music, WGN, 30 m.
Organ, WNBX
4.45 P.M. EST; 3.45 CT Adventures on Mystery Island, WFAF
Piano, WEEL
Stocks, WGY
Archie Bleyer's Orchestra, WJZ WHAM KDKA WBAL WFLA WGAR
The Jacksons, comedy, WLW
Radio Debut, WGAR
Chicago Variety program, WABC WHAS WPG
"Science in Your Home," Dr. Kurt Haessler, WOR
Clarence Jackson, WNBX
5 P.M. EST; 4 CT George Sterner's Orchestra, WFAF WEEL
Musical program, WGY
Al Pearce's Gang, WJZ WSM WFLA Koch, WHAS
Monitor Views the News, WBZ
Memories, KDKA
Jolly Roger, WHAM
Ethel Ponce, blues singer, WLW
Uncle Clyde, WGAR
"Og, Son of Fire," WABC
Federal Housing Campaign and Herbert Koch, WHAS
Vocal Trio, WIND
Helen Fitch movie critic, WBBM
Sam, Gil and Louie, WHAS
Weather, music, WOR
Harry Nolan, WNBX
5.15 P.M. EST; 4.15 CT Tom Mix's Straight Shooters, WFAF WEEL WGY WLW
Jackie Heller, tenor, WJZ WHAM WSM
Skipper Jim, WBZ
KDKA Kiddies' Klub, KDKA
"Skippy," WABC WCAU
Ozark Mt. Boys, WGAR
Kratzinger's Orchestra, WBBM
Capt. Tom and his Pirate Ship, WOR
Popular Tunes, WGN, 30 m.
Federal Housing Campaign, WHAS
5.30 P.M. EST; 4.30 CT Sizzlers, trio, WFAF WSM
Piano Lesson, WEEL
Drama, WGY
Singing Lady, WJZ WBZ WHAM KDKA WBAL
Gene Arnold, WFLA
Jack Armstrong, WABC WCAU
Christine Ridge, WHAS
Jack Webb, songs, WPG
Ed Wurtzbach's Orchestra, WBBM
Story and Contest Club, WOR
Sally's Party, WMCA, 30 m.
5.45 P.M. EST; 4.45 CT Capt. Tim Healy's Stamp Club, WFAF WEEL WGY
Little Orphan Annie, WJZ WBZ WHAM KDKA WBAL WFLA WGAR
News comments, WHAM
Jack Armstrong, WLW
Jack and his Buddies, WSM
Gordon, Dave and Bunny, WABC WCAU
Out of the Dusk, WHAS
Peg and Mimi, WPG
Tom Baker, tenor, WIND
Barbara Burr, WBBM
Jimmy Allen's Adventures, WOR
Baritone, WGN
6 P. M. EST; 5 CT Xavier Cugat's music, WFAF
Evening Tattler, WEEL, 30 m.
Old Man Sunshine, WGY
U. S. Army Band, WJZ, 30 m. (KDKA WHAM WFLA at 6.15)
Adventures of Jimmie Allen, WBZ
Organ Recital, WHAM
Dan and Sylvia, KDKA
String Trio, WLW
Marjorie Conney, pianist, WSM
Antonia Lopez' Orchestra, WFLA
Elvin Schmitt, WGAR
Buck Rogers, WABC WCAU WHAS
"Og, Son of Fire," WBBM
Uncle Don, WOR, 30 m.
Studio Orchestra, WGN
Alex Botkin's Ensemble, WMCA
6.15 P.M. EST; 5.15 CT "Mysterious Island" drama, WFAF
Jimmy Allen, WGY
Republican Program WJZ
U. S. Army Band, WHAM
Joe Emerson, WLW
Rambling Reviewer, WGAR
Bobby Benson and Sunny Jim, WABC WCAU WHAS
Skippy, WBBM

- Charley Eckel's Orchestra, WHDH (WMCA from 6.20, Investors' Service at 6.15)
6.30 P.M. EST; 5.30 CT News and Carol Deis, soprano, WFAF
Rhyming Reporter, news, drama, WEEL
News, Brevities, WGY
News and Three X Sisters, WJZ
News, weather, WBZ
Bob Newhall, WLW
Freddie Rose, WSM
News, melody's garden, WFLA
"The Shadow," WABC WCAU, 25 m. (news, 6.55)
Deed-I-Do Club, WHAS
Jack Armstrong, WBBM
Gabriel Heatter, commentator, WOR
Screen Revue, WMCA
News and Jack Orlando's Orchestra, WHDH
Singing Lady, WGN
6.45 P.M. EST; 5.45 CT Billy Batchelor, Raymond Knight, WFAF WEEL WGY WTAM
Lowell Thomas, "Today's News," WJZ WBZ WHAM KDKA WBAL WLW WFLA WGAR
Little Orphan Annie, WSM WGN
Woody and Willie, news, WIND WBBM
"Cocktail Time," WOR
Sports, WMCA WHDH
7 P.M. EST; 6 CT Ray Perkins, comedy, WFAF
Studio Chorus, WEEL
Jules Lande, violinist, WGY
Amos 'n' Andy, WJZ WBZ KDKA WBAL WLW WFLA WGAR
Sports, WHAM
Reddy Kilowatt, WSM
Myrt and Marge, WABC
Ford Frick, sports, WOR
Gloria Grafton, actress, WMCA
Jimmy Allan, WGN
News and The Crossroads, WHAS
7.15 P.M. EST; 6.15 CT Gene and Glenn, WFAF WEEL WGY WFLA Democratic State Committee, WBZ
Plantation Echoes, Willard Robison's music, WJZ WBZ KDKA WHAM WBAL WSM Lum and Abner, WLW
Distinctive Drama, WGAR
Just Plain Bill, WABC WCAU
Comedy Stars of Hollywood, WOR
Walter Adolphe Roberts, WMCA
Studio orchestra, WGN
7.30 P.M. EST; 6.30 CT Minstrel Show, Al Bernard and Paul Dumont, WFAF WGY
After Dinner Revue, WEEL
Red Davis, sketch, WJZ WBZ KDKA WSM WFLA
Reveries, WHAM
Paul Pierson's Orchestra, WLW
Virginia Nightingale, WGAR
Paul Keast and Rollo Hudson's Orchestra, WABC WCAU
Buck Rogers, WHAS
Sports reporter, WGN
"Mystery Sketches," WOR
One Man Minstrel Show, WMCA
7.45 P.M. EST; 6.45 CT Frank Buck, WFAF WGY WTAM
Republican program, WEEL
Dangerous Paradise, WJZ WBZ KDKA WHAM WLW WSM WGAR
The Melody Man, WFLA
Boake Carter, news, WABC WCAU WHAS
After Dinner Music, WOR
Harry Hershfield, WMCA
Ensemble, WGN
8 P.M. EST; 7 CT Champions, Richard Himber's music, Joey Nash, tenor, WFAF WEEL WGY WTAM, 30 m.
Jan Garber's music, Dorothy Page, contralto, Bob White, WJZ WBZ WLW WGAR, 30 m.
Friendly Hour, WSM
Dance Tunes, WOR, 30 m.
Carson Robison's Buckaroos, WABC WCAU WHAS
Irish Melodies, WPG
Lone Ranger, WOR, WGN, 30 m.
Screen Review, WMCA
8.15 P.M. EST; 7.15 CT Lasses and Honey, WSM
Edwin C. Hill, "The Human Side of the News," WABC WHAS
Mellerdrammers, WPG
Something Old—Something New, WCAU
5-Star Final, WMCA
8.30 P.M. EST; 7.30 CT William Daly's Orchestra, Gladys Swarthout, mezzo-soprano, Margaret Speaks, soprano, Fred Hufsmith, tenor, Frank Chapman, baritone, WFAF WEEL WGY WTAM, 30 m.
King's Guard quartet, Bernard Levitov's Orchestra, WJZ WBZ WHAM WSM WGAR
Political talk, KDKA
Henry Thies' Peppers, WLW
Mario Chamlee, Josef Pasternack's Orchestra, Liebestraum, Ay Ay Ay; "La Boheme," excerpt; March of the Toys; On the Trail; Love in Bloom, WABC WHAS, 30 m.
Kate Smith, WCAU, 30 m. (WPG at 8.45)
Contract Bridge talk, WPG
Sinfonietta, WOR, 30 m.
Ted Weems' Orchestra, WGN
Morton Bellin, WMCA, 30 m.
8.45 P.M. EST; 7.45 CT Short-Wave Broadcast from the "Seth Parker," Phillips Lord, WJZ WBZ WHAM WSM KDKA WGAR
Smilin' Ed McConnell, WLW
The Cameos, WPG
Sketch, WMCA
Northwestern U. program, WGN
9 P.M. EST; 8 CT Gypsies, Frank Parker, tenor, Harry Horlick's Music, The Sweetest Story Ever Told; My Wild Irish Rose; Only a Bird in a Gilded Cage, WFAF WEEL WGY WTAM, 30 m.
Minstrels, Gene Arnold, Joe Parsons, Bill Childs, male quartet, WJZ WBZ WHAM WBAL WLW WFLA WGAR, 30 m.
University of Pittsburgh, WSM, 30 m.
Rosa Ponselle, Andre Kostelanetz' music, Last Rose of Summer; Printemps; Qui Commence; La Violette, WABC WCAU WPG WHAS, 30 m.
The Witch's Tale, WOR, 30 m.
Bob Haring presents, WMCA, 45 m.
Kay Kyser's Orchestra, WGN
9.15 P.M. EST; 8.15 CT Comedy Stars, WGN
9.30 P.M. EST; 8.30 CT House Party, Joe Cook, Donald Novis, Frances Langford, Don Vorhees' Orchestra, WFAF WEEL WGY WLW WTAM WSM WSB WFLA, 30 m.
Drama, Douglas Hope, Joan Blaine, Jack Doty, WJZ WBZ KDKA WHAM WBAL WGAR, 30 m.
"The Big Show," Gertrude Niesen, Lud Gluskin's Orchestra, WABC WCAU WHAS, 30 m.
Hotel Traymore Orchestra, WPG, 30 m.
Lum and Abner, WOR WGN
"Melodies," WOR

Educational

- Saturday, October 27
7.45 P. M.—The Lawyer and the Public. James Grafton Rogers, former Assistant Secretary of State; Philip J. Wickser, secretary of the Co-ordination Committee, American Bar Association: "Better Justice Through a National Program for Bar Associations." CBSWABC
8.00 P. M.—Art in America. "American Sculpture Since the Civil War." NBC-WJZ
Tuesday, October 30
5.00 P. M.—"The Reaction of the Public to Cancer Education." Dr. Bernard Sachs, president, New York Academy of Medicine. NBC-WFAF
Friday, November 2
2.00 P. M.—"The Psychologist Says." Dr. Arthur Frank Payne. WOR
9.45 P.M. EST; 8.45 CT William Larkin, tenor, WOR
The Three of Us, WMCA
10.45 P.M. EST; 9.45 CT Lullaby Lady, male quartet, Morgan L. Eastman's Orchestra, WFAF WEEL WGY WLW WTAM WSM WFLA WSB, 30 m.
"America in Music," John Tasker Howard, WJZ WFLA, 30 m.
Sammy Liner's Orchestra, WBZ, 45 m.
Al and Pete, KDKA
Courtland Manning, WHAM
Mel Emerson's Orchestra, WGAR, 30 m.
Wayne King's Orchestra, WABC WCAU WHAS, 30 m.
Organ Recital, WPG, 30 m.
Frank and Flo, WOR
Blood and Thunder, WMCA, 30 m.
News, WGN
10.15 P.M. EST; 9.15 CT Political program, WHAM
Campaign for Re-Election of Gov. Herbert Lehman, WOR, 45 m.
Berenice-Taylor, WGN
10.30 P.M. EST; 9.30 CT Beauty That Endures, WEEL
Human Needs Campaign, WABC WCAU WPG WHAS KMOX WJSV WBT, 30 m.
Cotton Queen Minstrels, WLW, 30 m.
Sleepy Hall's Orchestra, WMCA, 30 m.
Bob Pacelli's Orchestra, WGN
10.45 P.M. EST; 9.45 CT Joseph E. Warner, WEEL
Democratic-Republican Series, WJZ WBZ Johnny Hamps Orchestra, WGN
11 P.M. EST; 10 CT "The Grumitts," WFAF WGY WFLA
Weather, current events, WEEL
Chick Condon's Orchestra, WGY
Hal Kemp's Orchestra, WJZ WHAM WGAR, 30 m. (WFLA at 11.15)
Weather, Sports Review, WBZ
400 Club, KDKA, 30 m.
News, Red Cross drama (30 m. Red Nichols' music at 11.20) WLW
Amos 'n' Andy, WSM
Jerry Cooper, WABC WCAU WPG
Myrt and Marge, WHAS
Weather, Moonbeams, WOR, 30 m.
Voice of Romance, WMCA
"Here, There and Everywhere," WGN
11.15 P.M. EST; 10.15 CT Carl Hoff's Orchestra, WFAF WEEL WGY
Radio Frolics, WBZ
Dance tunes, news, WHAM
Gene and Glenn, WSM
Glen Gray's Orchestra, WABC WPG, 30 m. (WHAS at 11.30)
Studio Program, WHAS
Harry Rosenthal's Orchestra, WMCA WIP
Dream Ship, WGN
11.30 P.M. EST; 10.30 CT Will Osborne's Orchestra, WFAF WEEL, 30 m.
Charles Boulaenger's Orchestra, WGY 30 m.
Jolly Coburn's music, WJZ WBZ WHAM, 30 m.
Orchestra, WLW, 30 m.
Francis Craig's Orchestra, WSM, 30 m.
Gene Beecher's Orchestra, WGAR, 30 m.
Gus Steek's Orchestra, WOR, 30 m.
Blue Rhythm Band, WMCA, 30 m.
Kay Kyser's Orchestra, WGN
11.45 P.M. EST; 10.45 CT Clyde Lucas' Orchestra, WABC WCAU WPG WHAS
Johnny Hamp's Orchestra, WGN
12 M. EST; 11 P.M. CT Buddy Roger's Orchestra, WFAF WEEL WGY, 30 m.
Guy Lombardo's music, WJZ WBZ WHAM KDKA WBAL WSM, 30 m.
Dance Orchestra, WLW, 30 m.
Joe Haymes' Orchestra, WABC WCAU WPG WHAS, 30 m.
Russian Gypsy Music, WOR, 30 m.
Dav's End, WMCA, 30 m.
Ted Weems' Orchestra, WGN
12.15 A.M. EST; 11.15 P.M. CT Ted Weems' Orchestra, WGN
12.30 A.M. EST; 11.30 P.M. CT Anson Weeks' Orchestra, WFAF WEEL WGY, 30 m.
Angelo Ferdinando's Orchestra, WJZ WBZ WHAM WSM, 30 m.
Limmy Gallagher's music, WSM, 30 m.
Home Loan Talk and Dance Orchestra, WLW, 30 m.
Dan Russo's Orchestra, WABC WHAS, 30 m.
Archie Bleyer's music, WMCA
Anthony Trini's Orchestra, WOR, 30 m.
Bob Pacelli's Orchestra, WGN
12.45 A.M. EST; 11.45 P.M. CT Willie Bryant's Orchestra, WMCA
1 A.M. EST; 12 M. CT Moon River, WLW, 40 m.
Gene Karlos' Orchestra, WABC
Ernie Holst's music, WMCA, 30 m.
Jimmy Joy's Orchestra, WHAS, 30 m.
Midnight Flyers, WGN
1.30 A.M. EST; 12.30 CT Teddy Hill's Orchestra, WMCA, 30 m.

A Marriage of Literature and Music With Two Featured Notables

Phelps Has Taught For Forty Years

And now we have a radio wedding: literature and music united under the bonds of business.

From such a union might be expected offspring that will delight and stimulate.

In this latest of major programs to be presented over the WEAF network of the National Broadcasting Company on Saturday evenings from 8 to 9, radio listeners hear that distinguished exponent of letters, WILLIAM "BILLY" LYON PHELPS, and one of the noted maestros of modern music, SIGMUND ROMBERG.

And also there are HELEN MARSHALL, soprano, and a large and competent orchestra.

Thus radio again confounds its critics, who prate of "jazz and low comedy, 12-year-old minds, banality, mediocrity, etc., etc., etc."

In Respect

Among the high-brows, the name of WILLIAM LYON PHELPS long has been held in respect.

Only a short time ago he resigned as LAMPSON Professor of English at Yale University.

In his many-sided capacity as professor, author, lecturer, journalist, wit, after-dinner speaker, philosopher and scholar, Mr. PHELPS has observed and interpreted the march of men and events for the past 40 years.

Yet there is nothing pedantic or drearily erudite about the man. He is loved and respected by Yale alumni.

At the age of 69 he is still contributing a column, "As I Like It," to Scribner's; writes a syndicated column, lectures on the average of once a week and is engaged in writing his autobiography.

An Athlete, Too

He was born in the home of his alma mater, New Haven, and was graduated from Yale in 1887.

In addition to his scholastic achievements, he was a member of the track and baseball teams and a cross-country runner.

He was a member of Psi Upsilon fraternity.

His career as a teacher extends more than 40 years. He began at the Westminster school in 1888 and the next year, when not yet 27, was engaged as instructor in English Literature at Yale.

Eight years later he became assistant professor and in 1901 succeeded to the chair of LAMPSON Professor.

His courses were voted the

They Sing and Talk as Romberg Plays



HELEN MARSHALL, soprano on the new program conducted by SIGMUND ROMBERG, which is graced by the philosophical observations of WILLIAM LYON PHELPS.

most popular by undergraduates, year after year.

He retired from active teaching last year, but makes his home in New Haven and takes a keen interest in college affairs.

With Honor

The list of honors that have come to him is too long to recount.

Suffice it to say that he can write eight collegiate and university degrees after his name, if he chooses. But he never does.

He was public orator of Yale and the only professor to receive the famous Montclair Bowl, a silver replica of the famous Eli stadium, which is given to the man who has done most for his university.

He has found time to write some 25 books, among the better known being, "BROWNING, and How to Know Him," "The Advance of the English Novel" and "The Twentieth Century Theatre."

How About Music?

So much for literature and its exponent on the new program. How about music?

Have you ever heard the music from "Blossom Time" or "The Student Prince?" Then you know ROMBERG.

On the new program, he not only presents his own works and

the works of other composers, but also devotes at least 20 minutes of the hour to his original compositions, introduced for the first time over the air; a tribute indeed to radio broadcasting.

Famed as one of the greatest living composers of operetta, SIGMUND ROMBERG had ambitions early in life to become a railroad and bridge engineer.

His musical bent, however, was not to be denied and at the age of 16 we find him conducting a 70-piece orchestra at the Budapest College of Music.

Slow But Sure

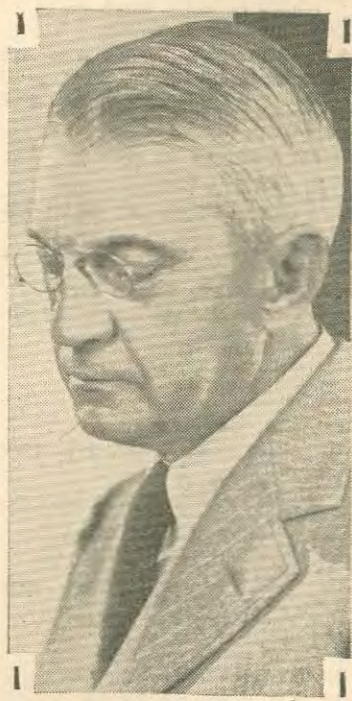
It was not until he came to America in 1910 that he turned seriously to music as a vocation. Recognition came slowly, but surely.

From 1914 to 1921 he wrote all musical scores for every production in which AL JOLSON and WILLIE and EUGENE HOWARD appeared. In 1914 he composed "The Blue Paradise," with its famous waltz, "Auf Wiedersehn,"

Composer



SIGMUND ROMBERG, one of the greatest living composers of operettas, who conducts the music for the latest radio program.



WILLIAM LYON PHELPS, former Lampson Professor of English at Yale, now the bright particular star of a radio program.

which swept the country.

In 1921 he wrote "Blossom Time," which established him firmly as one of the foremost operetta composers in this country.

In 1926 he composed his second international success, "The Desert Song," which was followed by "New Moon" and others.

The Soprano

HELEN MARSHALL, soprano, who has the leading vocal part in the new programs, has a story that smacks of a fairy tale.

The little blonde, blue-eyed girl was born in Joplin, Missouri. She had sung in musical productions in the Middle West and had appeared with the JULLIARD Opera Company in New York.

Last year, ROMBERG heard her in the leading role of "The Beggar's Opera" at Columbia University.

He was so impressed with her voice that he asked her to join him when he was forming his first radio company.

Radio Relay League Meets

By The MICROPHONE'S Special Washington Correspondent

Delegates from 11 states in the American Radio Relay League attended a two-day convention at Roanoke, Va.

The League has 40,000 licensed amateur operators in its membership.

The Roanoke division embraces Virginia, North Carolina and West Virginia. H. L. CAVENESS, professor at the University of North Carolina, is director of the Roanoke division.

Symphony Plays Beethoven Work

Performances of BEETHOVEN'S Seventh Symphony and of JANACEK'S "Sinfonietta" will be features of the New York Philharmonic Orchestra Sunday afternoon concert, October 28, which will be broadcast over the CBS-WABC network from 3 to 5.

The orchestra will be under the direction of OTTO KLEMPERER, who concludes his season with the Philharmonic with this concert.

He will be succeeded the following week by HANS LANGE, assistant conductor of the orchestra.

Russia Needs More Music On The Air

By The MICROPHONE'S Special Washington Correspondent

Soviet Russia's radio programs would be more popular if they contained more entertainment features such as are common on the American radio fare, LAWRENCE D. BATSON, electrical specialist of the Department of Commerce, reports.

Lectures on heavy political and economic subjects, the five-year plan and other government enterprises monopolize the current Soviet Russia programs, BATSON said.

Most of the receiving sets there are publicly-owned. They are installed in city and village squares and auditoriums. Crowds turn out for the programs, but if more music and drama were injected into the programs, the crowds would greatly increase, BATSON believes.

Receiving sets may be privately owned in Russia, provided they are bought through the official commercial organizations and government taxes are paid.

America is far ahead of other countries in the number of receiving sets, BATSON finds. His survey showed there are 42,500,000 sets in the United States.

The United Kingdom is second with 6,124,000; Germany third with 5,424,000; Japan fourth with 1,739,000, and France fifth with 1,554,000.

With 585 of the world's 1,497 medium wave transmitters, the United States leads the world in program broadcasting stations. Russia is second with 85; Canada third with 75, and China is fourth with 72.

Costliest Radio Program

The largest expenditure for any one program in the history of radio was HENRY FORD'S broadcast of the World Series baseball games, according to *Variety*. Taking in all costs including \$100,000 for the competing teams, it was estimated that FORD spent \$375,000.

For Southern Listeners

The programs of WEAF or WJZ may be heard over:

WAPI	Birmingham, Ala.
WFLA-WSUN	Clearwater, Florida
WIOD	Miami, Fla.
WJAX	Jacksonville, Fla.
WSB	Atlanta, Georgia
WSMB	New Orleans, La.
WOAI	San Antonio, Tex.
WSM	Nashville, Tenn.

The programs of WABC may be heard over:

WBRC	Birmingham, Ala.
WDAE	Tampa, Fla.
WQAM	Miami, Florida
WJSV	Washington, D. C.
WBT	Charlotte, N. C.
WTAR	Norfolk, Va.
WTOC	Savannah, Ga.
WBIG	Greensboro, N. C.

Middle Western Listeners

The programs of WEAF may be heard over:

KSD	St. Louis, Mo.
KYW	Chicago, Ill.
WMAQ	Chicago, Ill.
WTAM	Cleveland, Ohio

The programs of WJZ may be heard over:

WENR-WLS	Chicago, Ill.
WGAR	Cleveland, Ohio
WJR	Detroit, Mich.

The programs of WABC may be heard over:

WBBM	Chicago, Ill.
WHK	Cleveland, Ohio
WCCO	Minneapolis, Minn.
KMOX	St. Louis, Mo.
WHAS	Louisville, Ky.

NOTE: Outstanding local programs of these stations are regularly listed in The MICROPHONE.

Many European Programs

(Continued from Page 3)

anywhere in South America, Europe or trans-Pacific territory.

Trans-Atlantic stations, 'phone or broadcast, are received best below 23 meters before noon. South American stations are found on the same section of the dial throughout the day, while here a Far Eastern wave may come through any time up until an hour or so after dark.

The coming of darkness blots out all of the lower meter activity. The channels that offer ether roads to all the world while the sun shines become dead and silent after 7 or 8 P. M. Then dial ex-

plorers move to the 31-to-50 meter channels.

Around the dial this week: JVT, Nagasaki, Japan, is coming through occasionally in the mornings between 5 and 7.40, EST. The wave is 44.44 meters, 6.75 megacycles . . . RNE, the Moscow station on 25 meters, is building up now better than ever. Tune for it on Sunday mornings between 6 to 7 and 10 to 11 A. M.

The Australian outlets in 31 meters still are being received throughout the country with good volume, although as a rule their signal strength drops with the coming of winter.

Tuesday, October 30 - Gladys Swarthout, NBC-WEAF at 10 P.M.

Highlights

A. M.

11.15—Tony Wons, NBC-WJZ
P.M.

5.15—"Skippy," CBS-WABC
6.30—Howard Barlow, "Understanding Music," CBS-WABC
7.00—"Myrt and Marge," CBS-WABC
8.30—Lawrence Tibbett, NBC-WJZ
9.00—Ben Bernie's Orchestra, NBC-WEAF
Bing Crosby, CBS-WABC
9.15—The Story Behind the Claim, NBC-WJZ
9.30—Ed Wynn, NBC-WEAF
10.00—Glen Gray's Orchestra, Annette Hanshaw, CBS-WABC
Gladys Swarthout, NBC-WEAF

(All programs are listed in Eastern Standard Time. Central Time is one hour earlier.)

9.45 A.M. EST; 8.45 CT
Allen Prescott, WEAF
News, Wandering Minstrel, Musical Turns, WEEI
High Priests of Harmony, WGY
Walter Furniss, songs, WLW
Daily Story, WNBX
10 A.M. EST; 9 CT
News, Becca and de Rose, WEAF WEEI WGY
Edward MacHugh, Gospel Singer, WJZ WBZ KDKA WSM WFLA
Variety, WHAM
Organ, WLW (Home Loan talk, 10.10)
News, Music Masters, WABC WCAU WHAS
News, Home Hour, WPG, 1 h.
Devotions, WNBX
10.15 A.M. EST; 9.15 CT
Clara, Lu 'n' Em, WEAF WEEI WGY WLW WSM WGN
Castles of Romance, Ray Heatherton,, WJZ WBZ KDKA
Bill and Ginger, WABC WCAU
Sanders Sisters, WHAS
Organ, WHAM
Poet's Corner, WMCA
Hazel Slusser, Fred King, WFLA
Town Crier, WNBX
10.30 A.M. EST; 9.30 CT
Morning Parade, WEAF, 45 m. (WSM, 15 m.)
Piano and Song, WEEI
Market Basket, WGY
Today's Children, WJZ WBZ WHAM KDKA WFLA
Livestock, news, WLW
Madison Ensemble, WABC WCAU WHAS, 30 m.
Morning Concert, WNBX
10.45 A.M. EST; 9.45 CT
Romance in Rhythm, WEEI
Johnny Marvin, WGY
News and NBC Radio Kitchen, WJZ WHAM KDKA WSM WFLA
News, musicale, Highway Safety talk, WBZ
Contralto, WLW
Bob Archer, WHAS
News, WNBX
11 A.M. EST; 10 CT
Friendly Kitchen program, WEEI
Galaxy of Stars, WGY WTAM WLW
Honey-mooner, WJZ WBZ KDKA WHAM WSM WFLA
Eton Boys, WABC WPG
Galaxy of Stars, WLW
Charm Secrets, WCAU
Mobilization for Human Needs, WNBX
11.15 A.M. EST; 10.15 CT
Your Child, Dr. Ella Oppenheimer, WEAF WEEI WGY WSM WFLA
Tony Wons, WJZ WBZ WHAM
Texans, WLW
Alex Semmler, piano, WABC WPG
11.30 A.M. EST; 10.30 CT
Three Shades of Blue, WEAF WEEI WGY WSM
United States Marine Band Shut-In Hour, WJZ WSM, 1 h. (WHAM, 45 m.) (WLW, 30 m.) (WBZ WFLA, 30 m.) U. S. Navy Band, WABC WPG WHAS, 30 m.
Pete Woolery's Orchestra, WCAU
Organ Tones, WNBX
11.45 A.M. EST; 10.45 CT
Piano Duo, WEAF WEEI (WEEI, news at 11.55)
Martha and Hal, WGY
Smilin' Ed McConnell, WNBX
12 N. EST; 11 A.M. CT
Edward Wolter, baritone, WEAF WEEI
Musical program, WGY
Weather, The Monitor Views the News,, WBZ
Market Reports, KDKA
Prairie Symphony, WLW
Musica, WFLA
The Voice of Experience, WABC WCAU WHAS
Home, Sweet Home, WPG
"Cancer in New York," talk, WOR
Bob Fallon's Orchestra, WMCA, 30 m.
Len Salvo, organ, WGN
Ozzie Wade, WNBX
12.15 P.M. EST; 11.15 A.M. CT
Honeyboy and Sassafras, WEAF
Noonday Melodies, WEEI
Johnny Marvin, WGY
Weather, WBZ
News, WHAM
Variety, live stocks, WLW
Variety, WFLA
Connie Gates, songs, WABC WCAU WHAS WPG
Bernice Taylor, soprano, WGN
"Common Sense," WOR
Studio Pals, WNBX
12.30 P.M. EST; 11.30 A.M. CT
Merry Madcaps, Norman L. Cloutier's dance orchestra, WEAF WTIC, 30 m.
Stocks, produce, WEEI
Farm Program, WGY, 30 m.
National Farm and Home Hour, WJZ WBZ WHAM KDKA WLW WSM WFLA, 1 h.

Pat Shevlin's Orchestra, WABC WCAU, 30 m.; WPG from 12.45
University of Louisville, WHAS
Markets, organ, WGN
Phil Lynch's Orchestra, WOR, 30 m.
Rigo Santiago, songs, WMCA
12.45 P.M. EST; 11.45 A.M. CT
Caroline Cabot, Del Castillo, WEEI, 30 m.
Will Hollander's Orchestra, WMCA, 30 m.
Good Health and training, WGN
Farm Reports, WNBX
1 P.M. EST; 12 N. CT
Markets, weather, WEAF
Vagabonds, WGY
George Hall's music, WABC WCAU WPG, 30 m.
Variety, WOR
Just Plain Bill, WGN
1.15 P.M. EST; 12.15 CT
Rex Battle Concert Ensemble, WEAF WEEI WGY
Georgia Wildcats, WHAS
Dance orchestra, WOR
Mirror Reflections, WMCA
Piano, WGN
1.30 P.M. EST; 12.30 CT
Master Music Hour, WEAF, 1 h. (WEEI at 1.45)
Health Review, WEEI
"Under the Lilacs," N. Y. Children's Theatre, WGY
Vic and Sade, WJZ WBZ WFLA
William Penn Orchestra, KDKA
Dance Orchestra, WLW
Esther Velas Ensemble, WABC WCAU WPG, 30 m. (talk, 5 m.)
Morton Potters Orchestra, WHAS
Midday service, WGN, 30 m.
Theatre Club of the Air, WOR
Eddie Prior's music, WMCA, 30 m.
1.45 P.M. EST; 12.45 CT
Southerners, WGY
Beulah Croft, songs, WJZ WSM WHAM
New England Agriculture, WBZ
William Penn Orchestra, KDKA
Red Nichols' Orchestra, WLW
College of Agriculture, WHAS
Kay Fayre and Orchestra, WOR
Ragamuffins, WMCA
2 P.M. EST; 1 CT
Health Hunters, WGY
Crosscuts from Log of Day, WJZ WSM WFLA KDKA, 30 m. (WHAM, 15 m.)
Texas Cowboys, WBZ, 30 m.
Ohio School of the Air, WLW, 1 h.
Marie, the Little French Princess, WABC WCAU
Hotel Newton Trio, WPG
University of Kentucky, WHAS, 30 m.
Dr. Arthur Frank Payne, WOR
Sports, WMCA
Just Plain Bill, WGN
Afternoon Concert, WNBX
2.15 P.M. EST; 1.15 CT
Household Chat, WGY
Rochester School of the Air, WHAM
Romance of Helen Trent, WABC WCAU WPG WGN
"Memories," Fred Vetta and Alice Remsen, WOR
Stephen Barry, songs, WMCA WIP
2.30 P.M. EST; 1.30 CT
Kine's Guard, quartet, WEAF WEEI WSM WFLA
Albany on Parade, WGY
Home, Sweet Home, sketch, WJZ
Home Forum Cooking School, WBZ, 30 m.
KDKA Home Forum, KDKA, 40 m.
American School of the Air, "King Arthur," WABC WPG WHAS, 30 m.
Show Boat Days, WOR, 30 m.
Century of Progress Orchestra, WGN
Roads of Romance, WMCA, 30 m.
2.45 P.M. EST; 1.45 CT
Gus Van, songs, WEAF WEEI WGY
Nellie Revell, WJZ WHAM WSM WFLA
Palmer House Ensemble, WGN
3 P.M. EST; 2 CT
Ma Perkins, WEAF WEEI WGY WLW WSM WSB WTAM
Tommy Tucker's Orchestra, WJZ WHAM, 30 m.
ERA Civic Orchestra, WBZ, 30 m.
Sammy Fuller, KDKA
Columbia Variety Hour, WABC WCAU WHAS, 1 h. (WPG, 15 m.)
Blackstone Jongleurs, WGN
Studio Ensemble, WOR
Theatre Review, WMCA WIP
2.15 P.M. EST; 2.15 CT
The Wise Man, WEAF WEEI WGY WSM WFLA
WGY Players, WGY
Rochester Civic Orchestra, WHAM, 30 m.
Congress of Clubs, KDKA
Buddy Ransom, songs, WLW
Beauty talk, Nell Vinick, WOR
Crane Calder, bass, WMCA
Orchestra, WGN
3.30 P.M. EST; 2.30 CT
Woman's Radio Review, Joseph Littau's Orchestra, WEAF WEEI WGY, 30 m.
Music Magic, WJZ WBZ WSM WHAM, 30 m.
"Song of the City," WLW
Martha Deane, WOR, 30 m.

A Discovery



DOROTHY FREDERICKS, soprano, was "discovered" by station WLW and now is featured on a weekly program over that station Tuesdays from 9 to 9.30 P.M.

Sports Review, concert artists, WMCA, 2 h.
Home Management talk, WGN
Gerald Prouty, WNBX
3.45 P.M. EST; 2.45 CT
Business news, WLW
Afternoon Musicale, WGN, 30 m.
Mrs. Griggs, WNBX
4 P.M. EST; 3 CT
Chick Webb's Orchestra, WEAF WSM, 30 m. (WGY at 4.15)
Stocks, WEEI
Betty and Bob, drama, WGY WJZ WBZ WHAM
Visiting America's Little House, WABC WPG
Life of Mary Sothorn, WLW
Homemakers' Club, WFLA, 30 m.
Dr. H. I. Strandhagen, WOR
4.15 P.M. EST; 3.15 CT
Woman's Club program, WEEI
Platt and Nierman, WJZ WBZ KDKA
News, WHAM
Jimmy Arlen, baritone, WLW
Poetic Strings, WABC WPG
Week-day Devotions, WHAS
Organ, WOR WGN
Farm Flashes, WNBX
4.30 P.M. EST; 3.30 CT
Jesters, trio, WEAF (WGY at 4.55)
Fred and Rae, WEEI
Talk, WGY
Soloist, WJZ WBZ WHAM WSM WFLA, 30 m. (KDKA at 4.45)
Market Reports, KDKA
Betty and Bob, WLW
Science Service, Mrs. Calvin Coolidge, dedication of Calvin Coolidge Memorial Library, WABC WHAS, 30 m.
Carlton and Craig, WCAU
Stocks, WPG
Klari La Rue's Orchestra, WOR
Parent-Teachers Forum, WGN
Gwenyth Lee, WNBX
4.45 P.M. EST; 3.45 CT
Dr. Bernard Sachs, "The Reaction of the Public to Cancer Education," WEAF WEEI
Storks, WGY
Jacksons, WLW
Ship Ahoj, WCAU
"Science in Your Home," Dr. Kurt Haesler, WOR
Orchestra, WGN, 30 m.
Recordings, WNBX
5 P.M. EST; 4 CT
George Sterney's Orchestra, WEAF, 30 m. (WEEI WGY, 15 m.)
Your Health, WJZ WHAM KDKA WSM
The Monitor Views the News, WBZ
"Thrills of Tomorrow," WLW
Cocoanuts, WFLA, 30 m.
Federal Housing Campaign and Herbert Koch, WHAS, 30 m.

Cheer Leader Roxy



Football scouts are missing a good bet in not pressing Roxy into service as a cheer leader. His acrobatics in directing the vocal ensemble during his Saturday night CBS broadcasts would put to shame many of the young men who inspire the rooters at a college stadium.

Weather, Variety, WOR
Requested Recordings, WNBX
5.15 P.M. EST; 4.15 CT
Thrills of Tomorrow, WEEI
Thee Schoolmaids, WGY
Jackie Heller, WJZ WHAM WSM
Farm market news, WBZ
KDKA Kiddies' Klub, KDKA
Tim Healy, WLW
"Skippy," WABC
Nan, Mary and Camille, WPG
Pete Rice, Western drama, WOR
Soprano, WGN
5.30 P.M. EST; 4.30 CT
Radio Charades, WEAF WSM
Little Women, WEEI
Uncle Wiggley, WGY
Singing Lady, WJZ WBZ WHAM KDKA WBZ WLW
Jack Armstrong, "All-American Boy," WABC WCAU
Linn Del Mar, songs, WPG
Cocktail Hour, WOR
Bob Fallon's Orchestra, WMCA, 30 m.
Melodies, WGN
5.45 P.M. EST; 4.45 CT
Nursery Rhymes, WEAF WGY
Buddy and Blake, WEEI
Orphan Annie, WJZ WBZ KDKA WFLA News, WHAM
Business Women's Hour, WSM
Jack Armstrong, WLW
"Robinson Crusoe, Jr.," WABC
Out of the Dusk, WHAS
Miniatures, WPG
"Miniatures," WCAU
Uncle Wiggley, WOR
Piano, WGN
6 P. M. EST; 5 CT
Angelo Ferdinando's Orchestra, WEAF
The Evening Tattler, WEEI, 30 m.
Old Man Sunshine, WGY
Xavier Cugat's Orchestra, WJZ WHAM, 30 m. (KDKA from 6.15)
Adventures of Jimmie Allen, WBZ
Dan and Sylvia, KDKA
String Music, WLW
Marjorie Cooney, pianist, WSM
Musical Memory Contest, WFLA, 30 m.
Buck Rogers, WABC WCAU
Sam, Gil and Louie, WHAS
Uncle Don, WOR, 30 m.
Tony Cabooch, WMCA
Recordings, WGN
6.15 P.M. EST; 5.15 CT
Mid-Week Hymn Sing, WEAF
Jimmy Allen, WGY
Republican Campaign, WBZ
Murray Horton's Orchestra, WLW
Bobby Benson and Sunny Jim, WABC
Skippy, WHAS
Investor's Service, WMCA
6.30 P.M. EST; 5.30 CT
News, Mary Small, songs, WEAF WSM WFLA
Rhyming Reporter, news, Golden Moments, WEEI
News, Brevities, WGY
News and Harmonica Rascals, WJZ
News, weather, WBZ
Bob Newhall, WLW
Howard Barlow, "Understanding Music," WABC WHAS, 30 m. (news at 6.55)
Ben Greenblatt, WCAU
Boys' Club, WOR
Singing Lady, WGN
Roundup, WMCA
6.45 P.M. EST; 5.45 CT
Billy Batchelor, Raymond Knight, WEAF WEEI WGY WTAM
Lowell Thomas, "Today's News," WJZ WBZ WHAM KDKA WLW
Little Orphan Annie, WSM WGN
Radio Special, WFLA
Comedy Stars of Hollywood, WCAU
The Voice of Gold, WOR
Sports, WMCA
7 P.M. EST; 6 CT
Gould and Shetter, piano duo, WEAF
Neal O'Hara, football, WEEI
Marion Williams, soprano, Roger Sweet, tenor, WGY
Gridiron of the Air, WSM
Amos 'n' Andy, WJZ WBZ KDKA WLW WFLA
Sports, WHAM
"Myrt and Marge," WABC WCAU
Ford Frick, sports, WOR
Paul Barry, songs, WMCA
Jimmy Allan, WGN
7.15 P.M. EST; 6.15 CT
Gene and Glenn, WEAF WEEI WGY WFLA
Harold Von Emburgh, baritone, Bertrand
Hirsch's Orchestra, WJZ WSM
Joe and Bateese, WBZ
Lum and Abner, WLW
Hollywood Comedy Stars, WHAM WOR
Just Plain Bill, WABC WCAU
Ensemble, WMCA WIP
Orchestra, WGN
7.30 P.M. EST; 6.30 CT
"You and Your Government," Harold D. Smith, American Municipal Association, President, WEAF WGY WSM WFLA (scores, WGY, 5 m.)
After Dinner Review, WEEI
Edgar A. Guest, Charles Sears, tenor, WJZ WBZ WHAM KDKA, 30 m.
Southwind, WLW
Whispering Jack Smith, Allan Leifer's Orchestra, WABC WCAU
Buck Rogers, WHAS
Joseph D. McGoldrick, WOR
Sports Reporter, WGN
7.45 P.M. EST; 6.45 CT
Frank Buck, WEAF WGY WTAM
Big Freddie Miller, WEEI
Unbroken Melodies, WLW
The Forty-Niners, WSM
Comedy Capers, WFLA
Boake Carter, WABC WCAU WHAS
After Dinner Music, WOR
Harry Hersfield, WMCA
Ensemble, WGN
8 P.M. EST; 7 CT
Leo Reisman's Orchestra, Phil Ducey, baritone, WEAF WEEI WGY WFLA WSM WSB, 30 m.
Spencer Dean, Crime Clues drama, "Call the Wagon," WJZ WBZ KDKA WLW, 30 m.
"Lavender and Old Lace," Frank Munn and Hazel Glenn, Home Town Singers, WABC WHAS, 30 m.
Phil Emmerton's Orchestra, WCAU, 30 m. (WPG at 8.15)
Ray Ziegler, sports, WPG
Stage Show Revue, WOR, 30 m.
Funsters, WMCA
8.15 P.M. EST; 7.15 CT
Adventures of Jimmie Allen, WHAM
Beauty that Endures, WFLA
Vira C. Park, contralto, WPG
5-Star Final, WMCA
WGN Orchestra, WGN
8.30 P.M. EST; 7.30 CT
Wayne King's Orchestra, WEAF WEEI WGY WTAM WSM WSB, 30 m.

Lawrence Tibbett, baritone, St. Louis Blues; Alexander's Ragtime Band; Largo Al Facotum, John B. Kennedy, Wilfred Peltiere's Orchestra, WJZ WBZ KDKA WHAM WBAL, 45 m.
"Melodiana," with Abe Lyman's Orchestra, Vivienne Segal, Oliver Smith, tenor, WABC WCAU WHAS, 30 m.; WPG, 15 m.
Florida Military Academy, WFLA
Musical Variety, WLW, 30 m.
Bridge Talk, WPG
Judge William L. Dill, candidate for Governor, WOR, 30 m.
Harmonizers, WMCA
Kay Kayser's Orchestra, WGN
8.45 P.M. EST; 7.45 CT
Beauty that Endures, WFLA
"Doc" Savage, WPG
Northwestern U., WGN
9 P.M. EST; 8 CT
Ben Bernie's Orchestra, WEAF WEEI WGY, 30 m.
Melody Parade, WLW, 30 m.
Revels, WSM
Old Time Songs, WFLA, 30 m.
Bing Crosby, WABC WCAU WHAS, 30 m.
Helen Louise Jones, contralto, WPG
Dave Vine, comedian, WOR, 30 m.
U. S. Navy Band, WMCA, 30 m.
Mardi Gras, WGN, 30 m.
9.15 P.M. EST; 8.15 CT
Kay Goss, violin, WSM
The Story Behind the Claim, WJZ WBZ WHAM KDKA WBAL
Tenor, WPG
9.30 P.M. EST; 8.30 CT
Ed Wynn, Graham McNamee, Eddie Duchin's Orchestra, WEAF WEEI WGY, WLW WFLA, 30 m.
Hands Across the Border, WJZ WBZ KDKA WSM, 30 m.
Merry Go Round, WHAM, 30 m.
Toscha Seidel, violinist, Isham Jones Orchestra, WABC WCAU WHAS, 30 m.
Atlantic Male Chorus, WPG, 30 m.
Lum and Abner, WOR WGN
Penthouse Serenade, WMCA, 30 m.
9.45 P.M. EST; 8.45 CT
Eddy Brown, violinist, WOR, 30 m.
Ted Weems' Orchestra, WGN
10 P.M. EST; 9 CT
Operetta, John Barclay, Frank McIntyre, Gladys Swarthout, WEAF WEEI WGY, WLW WFLA, 1 h.
Seven Seas, Cameron King, WJZ WHAM, 30 m.
ERA Opera Orchestra, WBZ, 30 m.
Melody Parade, WLW, 30 m.
Glen Gray's Orchestra, Annette Hanshaw, Walter O'Keefe, Ted Husing, WABC WHAS WPG, 30 m.
Jolly Russians, WMCA WIP, 30 m.
News, WGN
10.15 P.M. EST; 9.15 CT
Current Events, Harlan Eugene Read, WOR
Bridge Club of the Air, WGN
10.30 P.M. EST; 9.30 CT
Tim and Irene's Sky Road Show, WJZ, WHAM, 30 m.
Joe Rines' Orchestra, WBZ, 30 m.
Joy Beautification Forum, KDKA
George Givot, WABC WCAU WPG WHAS, 30 m.
"That's Life," drama, WOR, 30 m.
Archie Bleyer's music, WMCA, 30 m.
Chicago Theatre of the Air, WGN, 30 m.
11 P.M. EST; 10 CT
Willard Robinson's Orchestra, WEAF WFLA
Weather, news, WEEI
Chick Condon's Orchestra, WGY, 30 m.
Del Campo's Orchestra, WJZ WHAM, 30 m. (WBZ at 11.15)
Weather, Sports Review, WBZ
William Penn Orchestra, KDKA, 30 m.
News, dance orchestra, WLW, 30 m.
Amos 'n' Andy, WSM
Harry Sailer's Orchestra, WABC WPG, 30 m.
Allan Scott, WCAU
Myrt and Marge, WHAS
Weather, Moonbeams, WOR, 30 m.
Voice of Romance, WMCA
Dudley Crafts Watson, WGN
11.15 P.M. EST; 10.15 CT
Robert Royce, tenor, WEAF WEEI
Dance Tunes and News, WHAM
Gene and Glenn, WSM
Charlie Davis' Orchestra, WMCA
Dream Ship, WGN
11.30 P.M. EST; 10.30 CT
Carl Hoff's Orchestra, WEAF WEEI WFLA, 30 m.
Charles Boulanger's Orchestra, WGY, 30 m.
Dorsey Brothers' Orchestra, WJZ WBZ WHAM WSM WFLA, 30 m.
400 Club, KDKA
Dance Orchestra, WLW, 30 m.
Henry Busse's Orchestra, WABC WCAU WPG WHAS, 30 m.
Paul Whiteman's Orchestra, WOR, 30 m.
Herbert Koch, organist, WHAS
Wayne King's Orchestra, WGN
11.45 P.M. EST; 10.45 CT
Jan Garber's Orchestra, WGN, 30 m.
12 M. EST; 11 P.M. CT
Harry King's music, WEAF WEEI WGY WSM, 30 m.
Ralph Kirby, Emil Coleman's Music, WJZ WBZ KDKA WHAM WSM WFLA, 30 m.
Clyde Lucas' music, WABC WCAU WPG WHAS, 30 m.
Dance Tunes, WLW, 30 m.
The Wanderine Poet, WPG, 30 m.
Florence Richardson's Orchestra, WOR, 30 m.
Day's End, WMCA, 30 m.
12.15 A.M. EST; 11.15 P.M. CT
Ted Weems' Orchestra, WGN
12.30 A.M. EST; 11.30 P.M. CT
Felix's Orchestra, WEAF WEEI WGY WFLA, 30 m.
Seymour Simon's Orchestra, WJZ WBZ WSM, 30 m.
Red Nichols' Orchestra, WLW, 30 m.
Enoch Light's music, WABC, 30 m.
Hughie Shea's Orchestra, WHAS
Gus Steck's Orchestra, WOR, 30 m.
Dick Mansfield's music, WMCA
Johnny Hamp's Orchestra, WGN
12.45 A.M. EST; 11.45 P.M. CT
Miami Beach Orchestra, WMCA
1 A.M. EST; 12 M. CT
Buddy Welcome's Orchestra, WABC
Moon River, WLW, 30 m.
Willie Bryant's music, WMCA, 30 m.

"Hallowe'en On The Farm" Is To Feature Ghosts and Dragons

The "Spooky Night" Is To Be Featured

Although Hallowe'en doesn't come until the 31st of October, one radio program, "Hallowe'en On the Farm," is going to celebrate it on Saturday, the 27th.

ROXY, kindly impresario of radio, will devote his entire program that evening, beginning at 8 o'clock, to the activities of the mystic night.

Highlights of the program will include a song by SUE READ, one of the "gang," called "The Spooky Night." WEE WILLIE ROBYN will present a selection called "The Green-Eyed Dragon" and among tunes which the orchestra will play will be the "Ghost Dance."

ROXY, as usual, will be master of ceremonies, but this time among witches and ghosts who also will take part in the program.

The broadcast will be heard through the WABC-Columbia network.

Radio Brings News To Darkest Africa

One part of darkest Africa isn't so dark as it used to be, thanks to a home-made radio set.

J. H. BROWN, who lives in the town of Mpweto, in Belgian Congo has a set that gets its power from an old automobile dynamo with a handle on it that is turned by hand.

And although BROWN is 300 miles from the nearest outside communication he gets the news 10 days before anyone else in the community.

Children's Radio Troupe Is Under Nila Mack's Direction

The Plays Produced Are Based On Fairy Tales

SEVERAL years ago, NILA MACK got the idea of organizing a children's stock company to enact programs for children, and they "hit the spot."

Her office is flooded with eager, scrawled letters asking her to make favorite fairy stories "come true." Year after year "Cinderella," "Beauty and the Beast," "Snow White and Rose Red," "Jack-in-the-Beanstalk," and other tales are demanded.

The task is an endless one. NILA MACK never catches up. Every year her audience changes, the old listeners grow up, and new ones take their places with the same requests.

Each Saturday morning, "Captain Bob," who is actually HARRY SWAN, imitator of animals, sound effects man, and NILA's chief assistant, carries the listeners off to the scene of the fairy tale on a different vehicle.

"Curiously enough," Nila Mack says, "the kids take as much interest about how they're going to get there, as they do in the story itself, and practically every letter contains some suggestion. Some mornings we travel to the scene in airplanes—sometimes in a chariot driven by six white horses and six black horses—and occasional-



Miss NILA MACK, director of the children's dramatic department of the Columbia Broadcasting System, whose productions are heard on the "Let's Pretend" program over the WABC network, Saturday morning at 10.30.

ly on motorcycles, all according to the current whims of the children."

One young listener suggested that it would be fun to travel on a "Leapin Leaner"—(the spelling is the writer's).

HARRY SWAN, "Captain BOB," contrives sound effects accordingly, and some of them are posers. One time, in answer to request, the audience was transported to the scene on a sailboat. It took

Leading Lady May Stop Show With The Mumps

some steady thinking to devise the sound of water, wind and the shaking of sails.

NILA MACK is one of the world's most patient show producers. Working with a company of youngsters, she has come to expect as inevitable that the leading lady's mother will call up before the program to announce that her daughter has just come down with the mumps.

Likewise, she takes it calmly if the child she has depended upon as the boy soprano comes into the program as a baritone, with his voice in the throes of changing.

Her cast is always prompt for rehearsals, for it is more of a lark than a job to them, although they do take the performance seriously.

NILA MACK soon cures any newcomer to the stock company of yearning to be leading lady or leading man in every performance. She tells them that everyone must take a turn at the stellar role, and that it is even more distinguished to play character parts.

The main problem in preparing the scripts is pronunciation.

"There must be no three-syl- (Continued on Page 13)

Partridge In a Visit To Station

Hunters in Bangor, Maine, don't have to go hunting for partridge, according to the people at radio station WLBZ, there. The birds just come to them.

A partridge, who refused to tell his name, recently tried to force an entrance into the studios of the radio station. He was cornered by OAKLEY VEAZIE, who took him into the news service rooms to call on the staff of WLBZ.

Instead of being frightened, the bird was quite pompous and strutted about, pecking at his hosts' hands.

After a short visit, the bird left in the company of Mr. VEAZIE. It was not learned whether the partridge would spend the night at the VEAZIE home or whether he would become the mainstay of one of the VEAZIE's delicious dinners.

Andy Gump Will Come To Radio

"The Gumps," one of cartoonland's well-known families, will come to life in a new series of radio programs starting Monday, November 5. The broadcasts will come over the WABC-Columbia network, Mondays through Fridays at 12.15 P. M.

ANDY and MIN, their son CHESTER, Uncle BIM, and the maid TILDA, and the rest of the characters will go through their trials and adventures in these fifteen-minute broadcasts.

These Programs Are Proving Popular With Children Of All Ages

7.45 A.M. EST; 6.45 CT Jolly Bill and Jane, WJZ (Monday through Saturday)	4 P.M. EST; 3 CT John Martin's Story Program, WEAJ WEEI WSM WFLA WJAR WCSH WTAG (Monday only)	5.15 P.M. EST; 4.15 CT Skippy, WABC WAAB WEAN WICC WFEA WDRG WORC WMAS WLBZ WFEA WCAU (Monday through Friday)	5.45 P.M. EST; 4.45 CT Albert Payson Terhune Dog Drama, WJZ WBZ WHAM KDKA WFLA WGAR (Sunday only)	6 P. M. EST; 5 CT Buck Rogers, WABC WCAU WAAB (Monday through Thursday)
9 A.M. EST; 8 CT Coast to Coast on a Bus, WJZ WBZ KDKA WLW WGAR (WHAM at 9.30) (Sunday only)	4.30 P.M. EST; 3.30 CT Our Barn, WEAJ WEEI WTIC WGY WFLA (Saturday only)	5.30 P.M. EST; 4.30 CT Alice in Orchestra, WEAJ WEEI WSM WJZ WTIC WTAG (Wednesday only)	6.15 P.M. EST; 5.15 CT Bobby Benson and Sunny Jim, WABC WCAU WAAB WEAN WICC WFEA WDRG WORC WMAS WLBZ (Monday through Friday)	6.45 P.M. EST; 5.45 CT Billy Batchelor, WEAJ WEEI WGY WJAR WCSH WTIC WTAM (Monday through Friday)
11 A.M. EST; 10 CT NBC Music Appreciation Hour, WEAJ WEEI WGY WJAR WCSH WTIC WTAM WJZ WBZ WHAM KDKA WLW WSM WFLA (Friday only)	4.45 P.M. EST; 3.45 CT Adventures on Mystery Island, WEAJ WEEI WJAR WCSH WTIC WGY (Monday through Thursday)	5 P.M. EST; 4 CT "Og, Son of Fire," WABC WAAB WFEA (Monday, Wednesday, Friday)	6.45 P.M. EST; 5.45 CT Nursery Rhymes, WEAJ WSM WFLA (Tuesday only)	
12.45 P.M. EST; 11.45 A.M. CT Kiddies' Cooking Class, WOR (Saturday only)	5 P.M. EST; 4 CT The Singing Lady, WJZ WBZ WHAM KDKA WBAL WLW WGAR (Monday through Friday)		6.45 P.M. EST; 5.45 CT Robinson Crusoe, Jr., WABC (Tuesday, Thursday, Friday and Saturday)	

Henry Harmony Graphically Portrays The Career of Irene Wicker



IREENE WICKER, the "Singing Lady" of NBC, whom you hear over the NBC-WJZ network on Mondays through Fridays, started her career when she was four years old. At that time she recited a sad little poem in which she was supposed to cry. However, she cried too much, not from the poem, but from stage fright, and had to be carried off.

WHEN IREENE was in school, she and a friend would skip classes so that they could put on plays at home. With supreme confidence she cut down Shakespeare's "Macbeth" to a play that could be acted by two people. An old music box of her mother's furnished the incidental music for their dramatic productions.

MISS WICKER got her first job with a dramatic organization under the name Irene Seaton. Her first pay was in the form of a \$20 gold piece. She vowed she'd keep it forever as a souvenir. This vow lasted until Irene's first year in college. She had to have a new gown for the college prom. And she got it—with the \$20 gold piece.

NBC's SINGING LADY is superstitious. She never sings before breakfast and uses the same blue dress for every audition at radio studios. Someone told her fortune once and advised her to add another "e" to her name, which was then "Irene." She did this. She went to New York once and visited 17 night clubs.

Introducing

Good morning to you,
Good morning to you;
Good morning dear public,
This way to the studios.

What Grover Whalen was to the City of New York; what Sybil Morse successfully and graciously is at WEEI. Official greeter, daytime hostess or choose your own appellation for the more than less important post which calls for meeting the public and greeting them as the never ending line wends its way toward the studios.



SYBIL MORSE

People are naturally curious. Radio is a curious thing—at least to the lay person, always eager to see what makes it tick. And a view behind the scenes, as it were, is pleasure aplenty for the uninitiate. Hence the position of Sybil Morse, geographically speaking, on the 13th floor at 180 Tremont Street, Boston, where high-speed elevators deposit the folk who want to be shown.

It is her duty and pleasure to show them, so far as studio utilization and visible access to the "show rooms" permit, the mysterious workings of artists face-to-face with such a harmless little gadget as a microphone. It requires personality; also tact; also dignity. She measures up to all of the requirements nicely, developing to a high point of efficiency the art of public relations diplomacy.

It is all a part of WEEI's service to the public, a little ex-

tra gesture which undoubtedly pays a substantial though invisible dividend. It is probably doubly true since the majority of studio visitors from the Metropolitan Boston area are also customers of The Edison Company of Boston, which public utility owns and operates the broadcasting station.

Hostessing, as such, is not the sole duty such a position entails. It calls for artistic talent as indicated by the frequent assignments the subject of our introduction has before the microphone. She is a most accomplished pianist, adept at the organ console, and on more than several occasions has been drafted for roles in dramatized air offerings. The piano is, of course, her best known vehicle to fame. Her playing is distinctly unique and a welcome addition to any among many programs on which her services are utilized. In addition to her radio work, she devotes a portion of her busy day to a group of students of the piano, Virginia Rice, Boston's nationally known tennis star, being numbered among her pupils.

Sybil is a native of Lisbon, New Hampshire, where she resided up to a decade ago, and where since, she is a constant visitor during vacation time and otherwise when her manifold duties permit. She now makes her home in Malden, and Webster Morse, her husband, is one of Boston's best known sports authorities through his association with the sports' staff of the *Christian Science Monitor*.

Prior to association with broadcasting work at WEEI, Sybil was organist for a four year period at the University Theatre, Harvard Square, Cambridge. Her experience at a theatre organ console also includes a two week stopover at Boston's "Met."

Marjorie Mills Directs "Home Makers' Council"

New England Network Twice Weekly

Tuesday morning, October 15, at 9:30, Marjorie Mills came back to New England radio listeners with her popular homemaking talks over the New England network. There is probably no woman broadcasting who has a larger following hereabouts than Marjorie Mills, who began her radio talks to women back in 1925 when ear phones and broom stick aerials were the fashion. Since that time over one New England station or another, she has been broadcasting almost continually, weaving into her chats with women so much humor and common sense as well as newsy information about what the family might like to eat that she has become a very popular radio personality.

The Home-Maker's Council of the Air, as this new feature is called, is broadcast over WEEI, WCSH, WTAG and WJAR every Tuesday and Thursday morning at 9:30.

A New Englander herself, Marjorie Mills has a complete understanding of what people in this part of the country like in the way of food, their marketing problems, when costs must be watched and the way women like to handle their housekeeping in general. Her job as editor of the women's pages of a metropolitan newspaper for the past ten years has kept her in touch with what New England women are doing and thinking about



MARJORIE MILLS

food and budgets and kitchen equipment.

"It's not easy to earn money," says Marjorie Mills, "but it's sometimes even harder to spend it wisely. The Homemaker's Council hopes to help you make your housekeeping dollars do their best work this Winter. And there are always so many new short cuts and ideas in equipment methods. New England women, we hope, will look to the Home-maker's Council broadcasts for prompt information on all these things."

She has missed her New England radio family, probably the largest listening audience on any single domestic science program. Now comes the thrill again of talking through Portland, Providence and Worcester stations, in addition to the people within the

WEEI coverage area.

The Home-Maker's Council is going to be just what the name implies, a round-the-table discussion of this business of keeping house; recipes, short cuts, news of new equipment and good sensible ideas, thought out together to the end that the job of homemaking may be made more interesting.

The Council belongs to the public so people are urged to forward suggestions and recommendations to Marjorie Mills at WEEI. With her natural ability for making her broadcasts worth while, it requires little optimism to see in the development of this Tuesday and Thursday feature, the finest program of its type on the air.

"Thrills of Tomorrow" New Series for Boys

A new program built especially for boys entitled "Thrills of Tomorrow" will be heard for the first time Tuesday at 5:15 P.M. The series is intended to give boys a glimpse into the probable mechanical and scientific world of tomorrow and at the same time provide exciting entertainment.

"Spike" Butler, a youthful adventurer, takes some thrilling trips in which he uses scientific projects which are at present in the experimental stage, but which probably will be actualities within a few years. These include pontoon islands in the ocean, the elaborate caisson submarine compartment being constructed for the salvage of the Lusitania gold, ships navigated by remote control and amphibian trains.

INTRODUCING!

Two of your favorite stars
GEORGE HARRIS
The Romantic Baritone
With his Mellow Melodies of the Day

and
PHIL SALTMAN
Modern Master of the Ivories
Featuring his 20th Century Piano-Duo

The Makers of
FELS-NAPTHA

Bring you this new, sparkling program—and an attractive

GIFT OFFER for everyone!
Tune in Station **WEEI**
Each **TUESDAY** and **THURSDAY** Morning at **10:15**

NEWS WEEI BRIEFS

Jack Beauvais is vocalizing now and then at Ye Seville . . . Just in the way of a Halloween suggestion is the thought that "Billy Bachelor," played so convincingly by Ray Knight, will miss a bet if he doesn't resurrect the pea shooter idea for the children—of course with the delicate delicacy "Wheatena"

the recommended ammunition . . . Excerpt from *New Yorker* review of Paul Green's "Roll Sweet Chariot" says in part . . . "Frank Wilson and Rose McClendon are in it . . . and an intense young boy named Lloyd Horton . . . they make up for some of the others . . ."; the "Lloyd Horton" is, of course, WEEI's "Buster," studio page, who had a fine experience on Broadway and points west in his obviously successful stage debut . . . Gladys Petch, world famous lecturer, will give a talk on "Norway" at 4:15, Thursday, Nov. 1st . . . "Jack, Del and Ray" are on a temporary apple diet, courtesy of a farmer in

Buckfield, Maine, who shipped a huge basket full to the studios . . . As usual, Willie Morris had a grand time on her belated vacation trip home—Mexico, Missouri . . . Roger Wheeler did a very creditable job of sky-piloting in the recent "Little Women" radio script from his own pen . . . The Miscanto Trio on the Boston Industrial Home broadcast, an excellent ensemble . . . Bob Freeman, whose eve-



ning announcing schedule gets him back from the races to announce the Tom Mix-Ralston feature, has frequently volunteered the comment of late that he would like to see Tom's favorite pony show up at the barrier just once. He says his choices are doing too much grazing on the backstretch . . . The "Secret Six" badges are much in demand as indicated by the fan mail on the "Buddy and Blake," New England network feature . . . "Senna and Chilton's" original program feature "Songs

Written While You Listen" is a novelty that bears watching . . . Ruth Falby names Will Rogers as her screen idol . . . It's quite a treat to see Mrs. Charles Geissler extemporize on "Bridge Points" over WEEI each Monday morning; of all programs here is one that would seem to demand prepared script . . . Dorothy Franklin leads the feminine movie devotees at WEEI . . . John Rushworth, one of Bob Burlen's production assistants, is wearing a "Secret Six" badge . . . Have you heard Dorothy Drake's dictum and good diction? . . . As long back as he can remember, Ed Wynn, the Fire Chief, has had a horror of fires and never under and circumstances would he be even a spectator at a conflagration large or small . . . Fred Allen, native Bostonian, is one of few builders-uppers of originality on his Wednesday evening hour of humor and excellent entertainment. The "Town Hall Tonight" theme is clicking to perfection.

CONTI PRODUCTS CORPORATION

Featuring the CONTI orchestra in three weekly Interludes of classical and popular music

MONDAYS WEDNESDAYS and FRIDAYS 10:10 A.M.

Sponsored by the makers of Conti Castile Soap, Conti Castile Shampoo, Conti Liquid Shave and Conti Virgin Italian Olive Oil

Thursday, November 1 - Little Symphony Orchestra, WOR, 8 P.M.

Highlights

- A. M.**
- 11.30—Gov. Eugene Talmadge of Georgia, NBC-WEAF
- P. M.**
- 1.45—NBC Great Composers' Hour, NBC-WJZ
 - 7.15—Gene and Glenn, NBC-WEAF
 - 8.00—Rudy Vallee, NBC-WEAF Little Symphony Orchestra, WOR
 - 9.00—Annette Hanshaw, Glen Gray's music, CBS-WABC Death Valley Days, NBC-WJZ
 - 9.30—Fred Waring's Pennsylvanians, CBS-WABC
 - 10.00—Paul Whiteman's Music Hall, NBC-WEAF

(All programs are listed in Eastern Standard Time. Central Time is one hour earlier.)

- 9 A.M. EST; 8 CT**
Herman and Banta, WEAF Variety, WEEI Forest Willis, WGY Breakfast Club, Jack Owens, tenor, The Three C's, WJZ WBZ WFLA, 1 h. (WHAM WSM at 9.15) (KDKA, 30 m.) Joe Emerson, WLW Organ, WSM Sunny Side Up, WABC, 45 m. What's on Today, WNBX
- 9.15 A.M. EST; 8.15 CT**
Don Hall Trio, WEAF WEEI WGY WLW Matinee Melodies, WNBX
- 9.30 A.M. EST; 8.30 CT**
Mildred Dilling, harpist, WEAF Marjorie Mills, WEEI Little Jack Little, WGY Styles, KDKA Mail Bag, WLW Wildcats, WHAS
- 9.45 A.M. EST; 8.45 CT**
Eva Taylor, Southernaires Quartet, WEAF High Priests of Harmony, WGY News, Wandering Minstrel, WEEI Sammy Fuller, KDKA Walter Furniss, songs, WLW Virginians, quartet, WABC WPG Bob Atcher, WHAS Jean Gravelle's Orchestra, WMCA Daily Story, WNBX
- 10 A.M. EST; 9 CT**
News and Breen and de Rose, WEAF WEEI Through the Hollywood Looking Glass, WGY Edward McHugh, WJZ WBZ Organ, WLW News, Bluebirds, trio, WABC WCAU WHAS News, Home Hour, WPG, 1 h. World Observer, WNBX
- 10.15 A.M. EST; 9.15 CT**
Clara, Lu 'n' Em, WEAF WEEI WGY WLW WSM WGN Castles of Romance, Ray Heatherton, baritone, WJZ WBZ KDKA Through the Looking Glass, WHAM Bill and Ginger, WABC WCAU WHAS Town Crier, WNBX
- 10.30 A.M. EST; 9.30 CT**
Morning Parade, WEAF, 45 m. (WSM, 15 m.) Piano and songs, WEEI Market Basket, WGY Today's Children, WJZ WBZ KDKA WFLA Stocks, news, WLW Artist Recital, WABC WCAU WHAS Altrurian News, WNBX
- 10.45 A.M. EST; 9.45 CT**
Romance in Rhythm, WEEI Johnny Marvin, WGY News and Radio Kitchen, WJZ KDKA WHAM WSM WFLA News, Musicals, Highway Safety talk, WBZ Nora Beck Thumann, contralto, (Home Loan talk, 10.55) WLW Tenor, WGN Swinging Along, WABC WCAU WHAS, 30 m. Poetry, WNBX
- 11 A.M. EST; 10 CT**
Studio program, WEEI Galaxy of Stars, WGY WGN WTAM WLW Hazel Arth, contralto, WJZ WHAM KDKA WFLA Duke Dewey's Hickory Nuts, WBZ String Ensemble, WSM Mary Lee Taylor, WHAS Variety, WNBX
- 11.15 A.M. EST; 10.15 CT**
Frances Lee Barton, WEAF WEEI WGY WLW Tony Wons, WJZ WBZ KDKA WHAM WSM WFLA Academy of Medicine, Dr. Clarence W. Lieb, "Art, Science and Nonsense of Compatible Eating," WABC WPG NRA Talk, WNBX
- 11.30 A.M. EST; 10.30 CT**
Gov. Eugene Talmadge of Georgia, WEAF WEEI, 30 m. Martha and Hal, WGY U. S. Navy Band, Girl Scouts, WJZ WBZ WHAM WSM, 30 m. (KDKA WLW at 11.45) (WFLA, 15 m.) Talk, KDKA "Through the Looking Glass," WLW Poetic Strings, WABC WCAU WHAS WPG, 30 m. Rev. Barter, WNBX
- 11.45 A.M. EST; 10.45 CT**
Banjoleers, WGY Farm Flashes, WFLA News Week, WNBX
- 12 N. EST; 11 A.M. CT**
Treasure Chest, Ralph Kirby, baritone, WEAF WEEI WGY WLW Fields and Hall, WJZ WSM Weather, Monitor Views the News, WBZ Market Report, KDKA Organ, WHAM Musicals, WFLA The Voice of Experience, WABC WCAU WHAS Home Sweet Home, WPG "Singing and Song Appreciation," WOR Bob Fallon's Orchestra, WMCA, 30 m. Len Salvo, organist, WGN Bob Neal, WNBX

- 12.15 P.M. EST; 11.15 A.M. CT**
Honeyboy and Sassafras, WEAF WEEI Johnny Marvin, WGY Merry Macs, WJZ WSM KDKA Weather, WBZ News, weather, WHAM Variety, Livestock reports, WLW Variety, WFLA Mayfair Melodies, WABC WHAS WPG "Common Sense," WOR Earl Wilkie, baritone, WGN Andres Gosslyn, WNBX
- 12.30 P.M. EST; 11.30 A.M. CT**
Merry Madcaps, Norman L. Cloutier's Orchestra, WEAF, 30 m. Stocks, markets, WEEI WGY Farm Program, WGY, 30 m. National Farm and Home Hour, WJZ WBZ WHAM KDKA WLW WSM WFLA, 1 h. "Smilin' Ed McConnell, WABC WCAU WHAS Phil Lynch's Orchestra, WOR, 30 m. Rigo Santiago, WMCA Markets, organ, WGN Gladys and Bert, WNBX
- 12.45 P.M. EST; 11.45 A.M. CT**
This and That, WEEI, 35 m. George Hall's Orchestra, WABC WCAU WPG WHAS, 30 m. Good Health and training, WGN Will Hollander's Orchestra, WMCA, 30 m.
- 1 P.M. EST; 12 N. CT**
Markets, weather, WEAF Vagabonds, WGY Markets, WHAS Hotel Morton Music, WPG, 30 m. Musical Variety, WOR, 30 m. Just Plain Bill, WGN
- 1.15 P.M. EST; 12.15 CT**
Jan Brunasco's Concert Ensemble, WEAF WGY (WEEI at 1.20) Frank Dailey's Orchestra, WABC, 30 m. Johnny Vance's Orchestra, WHAS Piano, WGN Ad Club Luncheon, WMCA, 45 m.
- 1.30 P.M. EST; 12.30 CT**
Gingham Club Orchestra, WEAF WEEI, 30 m. (WGY, 15 m.) Vic and Sade, WJZ WBZ WFLA KDKA Rochester School of the Air, WHAM Dance Orchestra, WLW, 30 m. Markets, WSM University of Kentucky, WHAS Markets, Midday Service, WGN, 30 m. Theatre Club of the Air, WOR
- 1.45 P.M. EST; 12.45 CT**
Southerners, WGY NBC Great Composers' program, Lesser known compositions of the great composers Frank Black, director, WJZ KDKA WFLA, 45 m. N. E. Agriculture, WBZ Art Kassel's music, WABC Ethelbert Nevin, WHAS Leola Lewis, contralto, WPG Rona Valdez, WMCA Verna Osborne, soprano, WOR Palmer House Ensemble, WGN
- 2 P.M. EST; 1 CT**
Stones of History, WEAF WEEI WSM, 30 m. Paul Curtis, tenor, WGY Texas Cowboys, WBZ, 30 m. Ohio School of the Air, WLW, 1 h. Marie, the Little French Princess, WABC WCAU Trio, WPG University of Kentucky, WHAS Dr. A. F. Payne, WOR Adventures in Melody, WMCA Ensemble, WGN Concert, WNBX
- 2.15 P.M. EST; 1.15 CT**
Household Chats, WGY Rochester School of the Air, WHAM "Romance of Helen Trent," WABC WGN Memories, WOR Adventures in Melody, WMCA
- 2.30 P.M. EST; 1.30 CT**
Trio Romantique, WEAF WEEI WFLA Albany on Parade, WGY Home, Sweet Home, WJZ WHAM Home Forum Cooking School, WBZ, 30 m. KDKA Home Forum, KDKA, 30 m. American School of the Air, "Italy," WABC WPG WHAS, 30 m. Martha Deane, WOR, 30 m. Concertos, WMCA, 30 m.
- 2.45 P.M. EST; 1.45 CT**
Gus Van, songs, WEAF WGY WSM Silver Lining, WEEI Joe White, tenor, A Broth of a Boy; That's How the Shannon Flows; That Old Irish Mother of Mine; Mother, My Dear; I Heard in the Night the Pigeons, WJZ WHAM WSM WFLA Rube Appleberry, WGN
- 3 P.M. EST; 2 CT**
Ma Perkins, WEAF WEEI WGY WLW WSM Tommy Tucker's Orchestra, WJZ WHAM WFLA, 30 m. (WBZ at 3.15) Attorney General Joseph E. Warner, WBZ Metropolitan Parade, WABC WCAU WHAS Studio Ensemble, WOR, 30 m. Jongleurs, WGN Knickerbocker Symphony, WMCA, 30 m.
- 3.15 P.M. EST; 2.15 CT**
Dreams Come True, WEAF WEEI WGY WLW WSM Marion Smith, WNBX
- 3.30 P.M. EST; 2.30 CT**
Woman's Radio Review, WEAF WEEI WGY, 30 m. Roy Shield's Orchestra, WJZ WBZ WSM, 30 m. "Song of the City," WLW Dansant, WABC WPG WHAS, 30 m. Bud Rainey, WOR Sports Review, concert artists, WMCA, 2 h. Home Management talk, WGN Folk tales, WNBX
- 3.45 P.M. EST; 2.45 CT**
State Federation Pennsylvania Women, KDKA Business news, WLW Tunes and Tempos, WOR Musicals, WGN, 30 m. Poetry, WNBX
- 4 P.M. EST; 3 CT**
Blue Room Echoes, WEAF, 30 m. Stocks, WEEI Betty and Bob, drama, WGY WJZ WBZ WHAM KDKA The Life of Mary Sothern, WLW Visiting America's Little House, WABC WPG WHAS The Apple Knockers, WCAU Dr. H. I. Strandhagen, WOR Piano, songs, WGN Ludlow Program, WNBX
- 4.15 P.M. EST; 3.15 CT**
Gladys Petch, "Norway," Red Cross news, WEEI Limey Bill, WGY

Collegiate



FRED WARING, director of the Pennsylvanians, broadcasts with his group over the CBS-WABC network each Thursday at 9.30 P. M.

- Dorothy Page, songs, WJZ KDKA Edwin Otis, baritone, WBZ Jimmy Arlen, baritone, WLW Salvation Army Band, WABC Devotions, WHAS Melody Singer, WOR Organ, WGN
- 4.30 P.M. EST; 3.30 CT**
Arlene Jackson, songs, WEAF Baritone, WEEI John Sheehan, tenor, WGY Palmer Clark's Orchestra, WJZ WBZ WHAM WSM WFLA Business news, markets, KDKA Betty and Bob, WLW Dick Messner's Orchestra, WABC WHAS, 25 m. Stocks, WPG Klari La Rue's Orchestra, WOR Organ Reveries, WNBX
- 4.45 P.M. EST; 3.45 CT**
Adventures on Mystery Island, WEAF WEEI Stocks, WGY Archie Bleyer's Orchestra, WJZ WBZ WSM The Jacksons, WLW "Science in Your Home," WOR Clarence Jackson, WNBX
- 5 P.M. EST; 4 CT**
National Congress of Parents and Teachers Program, WEAF, 30 m. Radio Chat, Sam Curtis, WEEI Drama, WGY Stanleigh Malotte, WJZ KDKA WSM The Monitor Views the News, WBZ Jolly Roger, WHAM Donald Ayer's Adventures, WLW Dixians, WFLA, 30 m. Leo T. Crowley, WABC WPG Music, weather, WOR Popular Rhythms, WGN, 45 m. Recordings, WNBX
- 5.15 P.M. EST; 4.15 CT**
Musical Turns, WEEI Musical Program, WGY Three Scamps, WJZ Kiddies' Klub, KDKA Farm market news, WBZ Uncle Wiggily, WHAM Tim Healy, WLW "Skippy," WABC Ray Sears, songs, WPG Pete Rice, Western drama, WOR
- 5.30 P.M. EST; 4.30 CT**
Elmendorf Carr, "Tales of Courage," WEAF WFLA "Little Women," WEEI Uncle Wiggily, WGY Singing Lady, WJZ WBZ WHAM KDKA WLW Jack Armstrong, All-American Boy, WABC Out of the Dusk, WHAS Church Convention summary, WPG Donald Ayer, WOR Sally's Party, WMCA, 30 m.
- 5.45 P.M. EST; 4.45 CT**
Jesters, WEAF Buddy and Blake, WEEI Lang Sisters, WGY Little Orphan Annie, WJZ WBZ WHAM KDKA Jack Armstrong, WLW "Robinson Crusoe, Jr.," WABC WCAU Miniatures, WPG Out of the Dusk, WHAS Uncle Wiggily, WOR Joseph Hassmer, songs, WGN
- 6 P. M. EST; 5 CT**
Xavier Cugat's Orchestra, WEAF WSM, 30 m. The Evening Tattler, WEEI, 30 m. Jimmy Allen's Air Adventures, WGY WBZ William Lundell interviews Henri Charpentier, chef, WJZ Sports, WHAM Dan and Sylvia, KDKA String Ensemble, WSM, 30 m. String Trio, WLW Buck Rogers, WABC WCAU Sanders Sisters, WHAS Uncle Don, WOR, 30 m. Current Books, WMCA
- 6.15 P.M. EST; 5.15 CT**
Col. Jim Healey, WGY Tom Coakley's music, WJZ Republican Program, WBZ Comedy Stars, WHAM Joe Emerson, WLW Bobby Benson and Sunny Jim, WABC Tell Sisters, WCAU "Skippy," WHAS Investors' Service, Charley Eckel's Orchestra, WMCA WIP

- 6.30 P.M. EST; 5.30 CT**
News, Mary Small, WEAF Rhyming Reporter, news, Golden Moments, WEEI News, Brevities, WGY News and Armand Girard, baritone, WJZ News, weather, WBZ Eddie Dooley, football highlights, WABC WCAU Pleasure Cruise, WHAM Bob Newhall, WLW Freddy Rose, piano, WSM Fireside Revelrics, WHAS "Kings and Queens of Sport," WOR Round up, WMCA Singing Lady, WGN
- 6.45 P.M. EST; 5.45 CT**
Billy Batchelor, Raymond Knight, WEAF WEEI WGY WTAM Lowell Thomas, "Today's News," WJZ WBZ WHAM KDKA WLW Connie Gates, songs, WABC (news, 6.55) Little Orphan Annie, WSM WFLA Comedy Stars, WCAU Variety, WOR Sports, WMCA Little Orphan Annie, WGN
- 7 P.M. EST; 6 CT**
Jack and Loretta Clemens, WEAF Neal O'Hara, football, WEEI Rangers, WGY Amos 'n' Andy, WJZ WBZ WHAM KDKA WBAL WLW WFLA "Myrt and Marge," WABC WCAU Weather Report, the Cross Roads, WHAS Ford Frick, sports, WOR Paul Barry, WMCA Jimmy Allan, WGN
- 7.15 P.M. EST; 6.15 CT**
Gene and Glenn, WEAF WEEI WGY WFLA Gems of Melody, WJZ WBZ WSM, 30 m. Lois Miller and Reed Kennedy, KDKA, 30 m. Just Plain Bill, WABC Lum and Abner, WLW Comedy Stars, WOR Red Grange Football Forecasts, WHAS Silver Voiced Lovers, WMCA WGN Orchestra, WGN
- 7.30 P.M. EST; 6.30 CT**
Minstrel Show, Burnt Cork, Dandies, with Al Bernard, Paul Dumont, WEAF WGY After Dinner Review, WEEI Southwind, WLW Whispering Jack Smith, WABC WCAU Buck Rogers, WHAS Baritone, WOR Folk Singer, WMCA Sports Reporter, WGN
- 7.45 P.M. EST; 6.45 CT**
Frank Buck, WEAF WGY Big Freddie Miller, WEEI Shirley Howard, songs, WJZ WFLA Joe and Bateese, WBZ Lois Miller, KDKA On Wings of Song, WHAM, 30 m. The Forty Niners, WSM Unbroken melodies, WLW Boake Carter, WABC WCAU WHAS After Dinner Music, WOR Strickland Gilliland, news commentator, WMCA Ensemble, WGN
- 8 P.M. EST; 7 CT**
Rudy Vallee, Connecticut Yankees, guest performers, WEAF WEEI WGY WLW WSM WFLA, 1 h. Lumber-pagant, WJZ KDKA, 30 m. Rangers, WBZ Easy Aces, WABC The Tell Sisters, WPG Billy Hars Orchestra, WCAU WPG WHAS Prof. Stuart P. Meach, WGN Little Symphony Orchestra, WOR, 1 h. Jean, Jane and Judy, WMCA
- 8.15 P.M. EST; 7.15 CT**
Democratic Campaign, WBZ Adventures of Jimmy Allen, WHAM "Fats" Waller's Rhythm Club, WABC WPG Hymn Sing, WHAS 5-Star Final, WMCA Dance orchestra, WGN
- 8.30 P.M. EST; 7.30 CT**
Charles Sears and Ruth Lyon, songs, WJZ WHAM, 30 m. (KDKA, 15 m.) "Massachusetts Bay Colony," WBZ The Forum of Liberty, WABC WCAU WHAS, 30 m. The Voice of the State Police, WPG Brad and Al, WMCA Bridge talk, WGN
- 8.45 P.M. EST; 7.45 CT**
Edmund Boucher, basso, WBZ Al and Pete, KDKA George Reid, WMCA Nick Nickerson, songs, WPG Kay Thompson, WMCA Orchestra, WGN
- 9 P.M. EST; 8 CT**
Captain Henry's Show Boat, Muriel Wilson, Conrad Thibault, WEAF WEEI WGY WSM WFLA, 1 h. Death Valley Days, drama, Tim Frawley, Joseph Bell, WJZ WBZ WHAM WLW, 30 m. Glen Gray's Orchestra, Annette Hanshaw, Walter O'Keefe, WABC WCAU WHAS WPG, 30 m. Russian Gypsy Orchestra, WOR Lawrence Salerno's music, WGN, 30 m.
- 9.30 P.M. EST; 8.30 CT**
National Tribute of Farewell to General Evangeline Booth, of the Salvation Army, WJZ WBZ KDKA WHAM WBAL WMCA, 30 m. Unsolved Mysteries, WLW, 30 m. Fred Waring's Pennsylvanians, WABC WCAU WPG WHAS, 30 m. Lum and Abner, WOR WGN
- 9.45 P.M. EST; 8.45 CT**
Al and Lee Reiser, WOR, 30 m. Wayne King's music, WGN

Police Radio

Station	Meters	Location
WPFV	121.5	Pawtucket, R. I.
WPDM	121.5	Woonsocket, R. I.
WPDH	122.05	Rochester, N. Y.
WPEA	122.05	Syracuse, N. Y.
WPEF	122.4	Bronx, N. Y.
WPEE	122.4	Brooklyn, N. Y.
WPEG	122.4	New York City
WMMJ	123.8	Buffalo, N. Y.
WPGG	124.37	Albany, N. Y.
WPGV	170.00	Boston, Mass.
WPEI	175.23	Arlington, Mass.
WPEI	175.23	East Providence, R. I.
WPFA	175.23	Newton, Mass.
WPGF	175.23	Providence, R. I.
WMP	190.66	Framingham, Mass.
WPEW	190.66	Northampton, Mass.
WPEL	190.66	Bridgewater, Mass.
WPGC	195.57	Albany, N. Y.
WEY	630.00	Boston, Mass. (Fire)

10 P.M. EST; 9 CT
Paul Whiteman's Music Hall, WEAF WEEI WGY WLW WSM WFLA, 1 h. Roads that Hove, WJZ KDKA, 30 m. Sammy Liner's Orchestra, WBZ, 30 m. Studio program, WSM "Forty-Five Minutes in Hollywood," WABC WCAU, 45 m. Organ Recital, WPG, 30 m. Studio Orchestra, WHAS, 30 m. Tony Cabouch, WMCA, 30 m. News, WGN

10.15 P.M. EST; 9.15 CT
Current Events, WOR WGN Orchestra, WGN

10.30 P.M. EST; 9.30 CT
Economics in a Changing Social Order, WJZ WBZ KDKA WHAM, 30 m. Revels, WSM, 30 m. Louisville Program, WHAS Wandering Post, WPG The Spotlight, WOR, 30 m. Arthur Warren's Orchestra, WMCA WIP, 30 m. Earl Buttrick's Orchestra, WGN

10.45 P.M. EST; 9.45 CT
Fray and Braggiotti, WABC WPG Billy Hays' Orchestra, WCAU Dance Orchestra, WGN

11 P.M. EST; 10 CT
Jack Berger's music, WEAF Charles Boulanger's Orchestra, WGY Weather, news, WEEI Eric Madriguera's Orchestra, WJZ WHAM WBAL WFLA, 30 m. Weather, Sports Review, WBZ Variety, WHAM William Penn Orchestra, KDKA, 30 m. News, Los Amigos, WLW, 30 m. Amos 'n' Andy, WSM Vera Van, songs, WABC WPG WCAU Myrt and Marge, WHAS Weather, Moonbeams, WOR, 30 m. Voice of Romance, WMCA Dudley Crafts Watson, WGN

11.15 P.M. EST; 10.15 CT
Organ, program of Bird Songs, WEAF WEEI Gene and Glenn, WSM Joe Rines' Orchestra, WBZ Little Jack Little's Orchestra, WABC WPG, 30 m. (WHAS, 15 m.) Jan Savitt's Orchestra, WCAU Leon Friedman's Orchestra, WMCA Dream Ship, WGN

11.30 P.M. EST; 10.30 CT
Dorsey Brothers' Orchestra, WEAF WEEI WGY WSM, 30 m. Eddie Duchin's Orchestra, WJZ WBZ WHAM, 30 m. 400 Club, KDKA Dance Orchestra, WLW, 30 m. Organ, WHAS Anthony Trini's Orchestra, WOR, 30 m. Blue Rhythm Band, WMCA, 30 m. Wayne King's Orchestra, WGN

11.45 P.M. EST; 10.45 CT
Paul Sabini's music, WABC Anson Weeks' Orchestra, WGN, 30 m.

12 M. EST; 11 P.M. CT
Eric Madriguera's Orchestra, WEAF WEEI WSM WGY, 30 m. George Olsen's Orchestra, Ethel Shutta, WJZ WBZ WHAM, 30 m. Dance-orchestra, WLW, 30 m. Isham Jones' Orchestra, WABC WCAU WPG, 30 m. Jimmy Joy's Orchestra, WHAS, 30 m. Will Osborne's Orchestra, WOR, 30 m. Day's End, WMCA, 30 m. Streets of Paris Music, WGN

12.15 A.M. EST; 11.15 P.M. CT
Ted Weems' Orchestra, WGN

12.30 A.M. EST; 11.30 P.M. CT
Buddy Rogers' Orchestra, WEAF WEEI WGY, 30 m. Dancing in the Twin Cities, WJZ WBZ WHAM KDKA WSM, 30 m. Red Nichols' Orchestra, WLW, 30 m. Enoch Light's Orchestra, WABC WHAS, 30 m. Florence Richardson's Orchestra, WOR, 30 m. Dick Mansfield's music, WMCA, 30 m. Earl Buttrick's Orchestra, WGN, 30 m.

1 A.M. EST; 12 M. CT
Moon River, WLW, 30 m. Buddy Welcomes Orchestra, WABC Willie Bryant's music, WMCA, 30 m. **1.30 A.M. EST; 12.30 CT**
Teddy Hill's Orchestra, WMCA, 30 m.

After the Theatre
Barbeued Chicken
In a quiet nook at

SLADES BARBECUE

958 Tremont St.—967 Tremont St.
435 Columbus Ave.
BOSTON, MASS.
Open All Night

Helen Hayes Finds Radio "Dandy" As She Does Barrie Play for NBC

Huston Stars in the Drama Next Sunday

By JEROME MYERBERG

HELEN HAYES is doing a juggling act of no mean merit. With the script of BARRIE'S "What Every Woman Knows" in one hand, an abundant sandwich in the other, she delivers a perfect Scotch burr to the microphone.

It's rehearsal time a week before the broadcast of another of the NBC Radio Theatre plays.

An all-star Broadway cast—HELEN HAYES heading the list—is assembled in one of the black-red-chromium studios of Radio City.

Again they're preparing to make your living room a stage. Broadway and Hollywood's brightest stars conspire to make your loud-speaker the grandest theatre in America. New York, Hollywood, Paris, Berlin, Vienna, London—the greatest dramas from these centers are to make their way into your home.

And now, right from the regal pomp of "MARY, Queen of Scots," comes HELEN HAYES to slip quietly onto the royal throne of radio drama as another famous Scotch lady: Sir JAMES BARRIE'S MAGGIE WYLIE of "What Every Woman Knows."

Out for Lunch

Diminutive Miss HAYES, sitting perched up on a stiff-looking chromium chair, suddenly discovers (it was then 3.30) that she hasn't had lunch.

A willing emissary departs for the star. They all want to go.

Miss HAYES is back at the "mike" now with her half-completed sandwich. KENNETH MacKENNA, her leading man (now appearing as the star of the Broadway skit "Merrily We Roll Along"), towers head and shoulders above her.

Beside them is the rest of the cast—all Broadway recruits—looking over their lines. In the background is the usual disarray of a studio—xylophones in one corner, a grand piano, microphones of assorted sizes and shapes, hats, coats, gloves tossed about.

Miss HAYES should be fairly familiar with her role. She played the part of the plain young Scots-woman for two years in the Broadway production and has just completed the talkie version of the famous play.

KENNETH MacKENNA, as the

The Bloom of Youth



MIRIAM HOPKINS, star of stage and screen, was star of the first NBC Radio Theatre production. The play was "Seventh Heaven."

ambitious but penniless young man who, for 300 pounds, agrees to marry MAGGIE, was also the leading man in the stage production.

These two, wise in stagecraft, are amazed at the skill with which the play has been prepared for an hour radio presentation. Nothing has been lost; all the incomparable charm, wit and pathos of BARRIE is preserved.

Maggie Speaks

MAGGIE begins to speak and Miss HAYES promptly forgets that she's in front of a microphone and acts (with HELEN HAYES there's no doubt about the accuracy of the word) every word, every emotion, every movement.

Radio is a perfect medium for her voice. You don't soon forget its poignant, lingering quality. You're lifted out of the hard, chromium chairs of Radio City; red tapestried walls give way to Scotch moorlands, trim business suits and Fifth Avenue frocks fade into the background.

Then suddenly the spell is broken; Director TONY STANFORD calls time out. He makes corrections, gently points out the proper technique in using the microphone.

So goes the rehearsal. For three hours, the stage and movie experienced cast labors to create a new kind of drama. And they succeed. They overcome the

other, or cut lines in the script without causing confusion or consternation.

About 10 minutes before the program, NILA MACK usually takes their minds off the impending performance by instigating a game of tableaux, leap-frog or hide-and-seek.

"They are apt to crawl out of a bass viol or creep behind the grand piano," Nila Mack reports.

But when she signals for "stand-by," silence and order are maintained. And the actors snap into the script with all the adventurous enthusiasm of the fairy-tale characters they portray.

handicap of acting for an unseen audience.

Miss HAYES, Mr. MacKENNA and all the rest perform to the manner-born. Radio history is made when rehearsals are scheduled for the whole week—never before have the big names of Hollywood and Broadway given so much of their time to this new dramatic art.

New Theatre

Sitting there in the studio, you can't help being impressed with the thoroughness of the whole thing. The sponsors of the Radio Theatre evidently have determined to show the loudspeaker audience that footlights plus camera plus microphone equal a new sort of drama—and you're given a season's ticket to first row, first seat at these microphonic premieres.

It's a full hour show over WJZ at 2.30 every Sunday afternoon with "What Every Woman Knows" October 21, as the second in the series; the first having been "Seventh Heaven," with MIRIAM HOPKINS.

Miss HAYES effectively squelches an objection to theatre-via-microphone.

"Why, is anything the matter with radio? I think it's dandy."

"Dandy" rather sums it up, and HELEN HAYES should know, having had 17 years' stage experience and being holder of the Academy of Motion Picture Award.

We asked her how she liked this business of performing for the sole benefit of "dat black debil" microphone. Her answer was that she'd never worked so hard for footlights or camera.

"I've got to do everything with my voice. Of course, it's a strain—a terrific one—but I like it."

Winsome



HELEN HAYES, photographed informally as she rehearses for her appearance in "What Every Woman Knows" on the WJZ network.

They all work hard—and they get their reward in a fine job well done.

The act is over, the curtain falls into place, and I'm back in Radio City and you're in your arm-chair. Miss HAYES has given one performance in the new Radio Theatre for several millions of listeners—and she steps back so that the revolving stage can bring you its next premiere: WALTER HUSTON in his famous role as "The Barker," on October 28.

KYW Joins the NBC

Station KYW, formerly located in Chicago, will reopen on December 1st in Philadelphia as a new link in the NBC-WFAP network.

Short Wave Directory

Station	Metres	Location	Time (E.D.T.)
GSG	16.86	Daventry, England	6.30 to 10.45 A. M.
FYA	19.68	Pontoise, France	7.30 to 11.00 A. M.
PJC	19.71	Hilversum, Holland	8.30 to 10.30 A. M.
DJB	19.73	Zeesen, Germany	8 to 11.30 A. M.
GSF	19.82	Daventry, England	8.45 A. M. to 12.45 P. M.
HVJ	19.84	Vatican City, Rome	5-5.15 A. M. (Sat. 10)
RNE	25.00	Moscow, U. S. S. R.	6-7, 10-11 A. M. (Sun.)
FYA	25.20	Pontoise, France	11.15 A. M. to 6 P. M.
GSE	25.28	Daventry, England	10.45 A. M.-12.45 P. M.
DJD	25.51	Zeesen, Germany	5.30 to 10.45 P. M.
GSD	25.53	Daventry, England	1 to 5.45 P. M.
FYA	25.63	Pontoise, France	6.15 to 9 P. M.; 10 P. M. to 12 Midnight
LSX	28.98	Buenos Aires, Byrd relays	8-10 P. M., Tues., Wed.
EAQ	30.40	Madrid, Spain	5.15-7 P. M. (Sat. 12-2)
CT1AA	31.25	Lisbon, Portugal	4.30-6 P. M., Tues., Fri.
HBL	31.27	Geneva, Switzerland	5.30-6.15 P. M., Sat.
VK2ME	31.29	Sydney, Australia	12 Noon to 10 A. M., Sun.
VK3LR	31.30	Melbourne, Australia	3 to 8 A. M.
DJA	31.38	Zeesen, Germany	5.15 to 9.15 P. M.
VK3ME	31.55	Melbourne, Australia	5 to 6.30 A. M., Wed.; 5 to 7 A. M., Sat.
GSB	31.55	Daventry, England	1 to 5.45 P. M.
OA4AC	38.36	Lima, Peru	9 to 11 P. M.
HBP	38.47	Geneva, Switzerland	5.30 to 6.15 P. M., Sat.
HJ3ABD	40.55	Bogota, Colombia	6.30 to 11 P. M.
HC2RL	45.00	Guayaquil, Ecuador	5.45 to 8 P. M., Sun.; 9.15 to 11.45 P. M., Tues.
PRADO	45.31	Riobamba, Ecuador	9 to 11.40 P. M., Thurs.
HJ1ABB	46.51	Barranquilla, Colombia	5.30 to 10 P. M.
YV3RC	48.78	Caracas, Venezuela	4.30 to 9.30 P. M.
	48.00	Army Aircraft	Evening—irregularly
YV2RC	49.08	Caracas, Venezuela	5.15 to 10 P. M.
YV5RMO	49.39	Maracaibo, Venezuela	6.30-10 P. M.
CP5	49.34	La Paz, Bolivia	6.30-10 P. M., irreg.
HIX	49.50	Santo Domingo	8.10-10.10, Tues., Fri.
DJC	49.83	Zeesen, Germany	5.30 to 10.45 P. M.
GSA	49.59	Daventry, England	6 to 8 P. M.
HJ1ABG	49.75	Barranquilla, Colombia	6.15 to 10 P. M.
XEBT	49.87	Mexico City	6 P. M. to 1 A. M.
COC	49.90	Havana, Cuba	5 to 7 P. M.
RV59	50.00	Moscow, U. S. S. R.	2-6 P. M.
HJ4ABA	51.49	Colombia, S. A.	1-2 P. M.
HCJB	73.00	Quito, Ecuador	7.30-9.45 P. M.
	67.87 to 73.17	All Ships	Heard irregularly
KFZ		45.34, 31.57, 25.36, 23.19, 25, 17, 14 and 33 Byrd Expedition at Little America	

NOTE: All times given are week-day schedules, unless indicated otherwise. The stations listed are regular broadcasters at the times indicated. Other stations which you may hear or which are used for international telephone have been purposely omitted.

Children's Dramas Are Featured On NBC

(Continued from Page 9)

lable words," says Nila Mack, "for they cause pandemonium in rehearsals. When a Princess comes up against fancy word she's never seen before there's bound to be trouble.

"When I write a difficult word into a script, I usually spell it the way I want them to pronounce it.

"I never have to write in dialect for my dialectician, Walter Tetley. I merely have to say 'Make it Irish' and he turns out a perfect dialect."

The youngsters take particular pride in living up to NILA MACK'S expectations during a rehearsal or performance. She never scolds or lets forth a tirade to get

results. Their greatest disappointment is in disappointing her, and the surest way to get results in difficult circumstances is to admit that they have disappointed her.

"The children display remarkable concentration during rehearsal," Nila Mack says. "They are usually so interested in discovering how the story turns out that they are perfectly absorbed in the script."

If anything goes wrong on the air, a smile or a pat on the shoulder will put NILA MACK'S actors back into their stride. They are flexible to suggestion even during a program. She can move them from one microphone to an-

Reflections

By Diana Herbert

The MICROPHONE'S Fashion Observer

AN ATTRACTIVE, well-proportioned figure for some time past has been every woman's ambition. And fashion each year seems to be more exacting as to figure requirements. This Winter's clothes offer few concealments for extra pounds or slight bulges, which once might have gone unnoticed.

The new styles also DEMAND a good carriage. They are designed for one who walks proudly and well, head erect, limbs moving with easy grace.

THE LADY who attempts chic, yet slouches, fails to hold her head high, wobbles or lounges, only achieves the ridiculous. If she will begin by carrying her skyscraper hat as the women of Bali carry their burdens, she will soon find a new grace and fluency imparted to all her movements. If she will practice stretching from the waist and maintaining a slight but continuous pull on those muscles, she will discover that her waistline appears inches smaller and has (if reasonably proportioned to begin with) that fragile quality which is so enchanting, especially in a robe de style.

WITH THE help of DIET AND EXERCISE one may correct many figure defects, but that is not enough. One must exercise continuously to maintain the suppleness and grace without which a beautiful figure has no meaning. Aesthetic dancing, whether in the modern or the classical tradition, is immensely valuable for this purpose. Likewise many sports such as swimming, skating, tennis.

THESE EXERCISES all demand control and co-ordination of the various parts of the body and their muscles. It is this discipline which produces the lovely carriage, the lithe movements, the effortless grace of a PAVLOWA. Few, if any of us, can aspire to such heights, but by conscientiously training our bodies any one of us will find herself vastly improved, not only in figure, but in chic. For she will wear her clothes as the designer intended them to be worn.

JESSICA DRAGONETTE finds it simple to get her daily exercise, even in a penthouse. She skips rope. And judging from her appearance, it is an entirely efficacious form of exercise.

This and That

(Continued from Page 1)

cant," I said. I stick to it. That so intelligent, even so literary a person as ALEXANDER WOOLLCOTT can attract the large radio audience he does is one more sign that the good radio program is increasingly popular.

COLUMBIA has shown wisdom in retaining LAWRENCE GILMAN as commentator and DAVIDSON TAYLOR as announcer for the New York Philharmonic broadcasts.

Mr. GILMAN is the most sensitive of critics; while TAYLOR is one of the extremely few announcers who can talk well about music without being affected or who can pronounce composers' names correctly.

Seidel Is Soloist

TOSCHA SEIDEL, well-known concert violinist, will be guest soloist with ISHAM JONES' Orchestra on Tuesday, October 29, from 9.30 to 10 P. M.

New Englander



Aylesworth And Paley Are Heard

(Continued from Page 1)

clergymen and educators. AYLESWORTH said:

"American radio needs no defense because it is providing an abundance of educational and cultural programs which more than satisfy the majority of listeners.

"Definite progress has been made in religious broadcasting because co-operation has existed, whereas in the educational field the proper type of co-ordinated activity has never been properly developed."

Television ultimately will become a medium of mass entertainment, AYLESWORTH predicted. It is four or five years away. Public demand, he said, will govern the introduction of practical television—a demand which does not yet exist.

"I am loath to believe that any legislative mandate could assist in the attainment of goals that we are already working toward so wholeheartedly; nor would it seem that legislative direction would make any easier the creative work in an industry where the creative spark is so vital to the performance of almost every moment's task."

Similar views were expressed by Dr. NICHOLAS MURRAY BUTLER, H. L. MENCKEN, ALEXANDER WOOLLCOTT, Dr. WALTER DAMROSCH, GEORGE JEAN NATHAN and Rabbi JONAH B. WISE.

Father MICHAEL J. AHERN, Jesuit priest on the staff of Weston College, and associated with Boston College, testified that the Yankee network had given religious groups good co-operation. He said:

"Since 1929 I have been director of the Catholic Truth Hour over the network. We experienced no difficulty in acquiring all the time needed and in obtaining the first degree of co-operation."

VIRGINIA HEATH, Brookline night-club singer, recently won the right in an audition contest to represent New England in a program to be broadcast over the CBS-WABC network on Sunday, October 28, at 5 P. M.

Q. and also A.

Q. Is RAY HEATHERTON on the air now?

S. N., P. E. I.

A. RAY HEATHERTON is on a vaudeville tour at present.

Q. Who plays Captain HENRY'S sister, MARIA, on Showboat? Who plays MARIA'S husband, WALTER JAMISON?

K. I. W., Woodland, Me.

A. MARIA is played by IRENE HUBBARD, and her husband is played by WRIGHT KRAMER.

Q. On what station and at what time may FRAN FREY be heard?

T. O., Easton, Pa.

A. FRAN FREY may be heard over WOR, conducting the Friday Frolics, at 8 P. M.

The Return Of Sherlock Holmes

SHERLOCK HOLMES is coming back.

Radio mystery dramas based on the stories of A. CONAN DOYLE will return to the air over the NBC-WJZ network on Sunday, November 11, at 4 P. M.

RICHARD GORDON, radio and stage actor who created the role of SHERLOCK HOLMES on the air, again will be heard as the Baker Street detective, and LEIGH LOVELL, British stage artist, will be Dr. WATSON.

Conductor-Engineer



JOSEF KOESTNER, radio orchestra conductor in Chicago, might have been an engineer if he had not turned to conducting. KOESTNER knows the mechanics of the steam engine and considers a ride from Chicago to Aurora in the engine cab of the Empire Builder as one of the real thrills of his life.

Nimblewits

By Everett Smith

"Wit Teasers" on Sunday at 11.30 A. M. from WBZ

NO. 1. (No time limit) An inkling as to the popularity—together with a reason for certain unpopularity—of crypt-solving is contained in the following message:

Stations Of Small Size Get 'Break'

By The MICROPHONE'S Special Washington Correspondent

Regulations issued by the broadcast division of the Federal Communications Commission permit an increase in power for daytime local and regional radio stations.

Small stations which have charged they were being crowded off the air got a "break" in the new rules.

The division ordered complete separation of day and night quotas, allotments for each to be independent of the other.

The order said:

"The 'night quota' due and assigned does not differ materially from the night portion of the present system.

"The 'daytime quota' due each zone and state within each zone has been increased so that the quota already assigned no longer becomes the limiting factor in many cases to an increase in daytime power of local and regional stations and day and limited time stations on clear channels."

Rule 120 was modified so that the maximum daytime power on the regional channels listed in this rule was increased to 5,000 watts. No other change was made in the maximum power of other classes of stations.

The division added:

"In increasing the daytime quota due the several states, it is not the intention of the Commission to license additional daytime stations unless a full howing has been made.

"The applicant must definitely establish the need for the additional service, the financial and technical ability to operate such a station in accordance with the rules and regulations and that the station can exist on the basis of the grant requested.

"A survey of the stations in small cities or communities indicates that it is extremely difficult for such stations to operate even though they have full time.

"The possibility of a daytime station under similar circumstances becoming a success is greatly decreased."

RTEU JWHTYI OPTJE BTKW- QEI EGUQEBGOUHKN EAH- KU. GPSHEU TWEHPXGLPJ AKHLPJSE YKHC UGWUGPQ- DQWYPN CJGKQEHSJ.

No. 2. (1 minute) This week we celebrate "HALLOWEEN." Quickly, now! How many different words,

each in its correct chronological order, can you find hidden away in that word "Halloween?"

No. 3. (3 minutes) An old-timer called a Chronogram. Can you decipher it? "To half - a - dozen

add six, and to the result add five hundred. The whole will represent a word signifying 'clear, lucid, bright or glowing.'"

No. 4. (3 minutes) From the letters in the phrase below, try forming an old-time proverb. The letters may be twisted or transposed as desired.

"STRONG LION'S SHARE ALMOST GONE"

No. 5. (3 minutes) Three words, each containing six letters, and each of which is defined below, can be expressed in each instance with three letters. Can you do it? Definitions: 1. A likeness. 2. A state of being. 3. To pardon.

Answers to Last Week's Nimblewits

No. 1. Behind every black cloud there is a silver lining; always look for it whenever you are blue.

No. 2. Octodecimo, Octodont, Octofoil, Octonary, Octopus, Octoroon, etc.

No. 3. 75 Yards.

No. 4. Jack, Tack, Tick, Kick, Kink, King.

No. 5. Glowerings. G lower in G's.

Miss Booth To Say Farewell

On Thursday, November 1, from Madison Square Garden in New York, EVANGELINE BOOTH, first woman commander-in-chief of the Salvation Army, will make her farewell address to America. Her speech and the attendant ceremonies will be broadcast over the ABS-WMCA network at 9 P. M., and over the NBC-WEAF network at 9.30

POWERS' Asthma Relief

has been a boon to the afflicted for over 50 years. 6 oz. 60c - 18 oz. \$1.20.



Buy at Your Local Druggist's or Write Direct

E. C. POWERS COMPANY

Box 62, Dorchester Center Station, Boston

Western Maestro

AFTER ALL these years of passively allowing his name to be spelled the wrong way, the maestro of the "Hollywood Hotel" show, and filmland's favorite orchestra leader, has issued an edict that the proper construction of his tag is Fio Rito. Poor Ted has had to put up with a lot of nonsense with regard to his name. He receives letters with it spelled "Firito," "Fierco," and "Fier Ito."

Maestro Fio Rito's lilting melodies are currently being featured on the "Hollywood Hotel" series of broadcasts, each Friday night at 9.30 over Columbia Broadcasting System, and starring Dick Powell, the new radio find, Jane Williams, Louella O. Parsons interviewing guest picture stars, William O'Neill, the Debutantes, and others.

Although Ted was born in Newark, N. J., he's lived and worked in the West so long that news of him in person must come to us second hand.

Ted took an early interest in radio. So early that he operated his own station in order to broadcast. That was when he was playing at the Edge-water Beach Hotel, Chicago, in 1919. He bought and developed station WIBO, then sold his interest in it. The station he made popular still flourishes independently.

Ted's parents were musical. His mother, Eugenia Conta Lupo, starred in light operas in Italy; his father, Louis Fio Rito, played in symphony orchestras. They encouraged their children's musical talents,

acting as audience and critics when Ted began to play on the old-fashioned piano in the living room, and brother Richard soloed on the saxophone.

When Ted was 16, he left high school in Newark to take a job as pianist in a movie house. It was the proudest day of his youth when he clinched the job at \$5 a week. His next step up the ladder was as pianist with Ross Gorman's orchestra in Atlantic City, at the age of 18.

He made his radio debut over CBS from the Hollywood Gardens in 1929 in New York, and has since been heard on the network regularly from California.

On the Coast, Ted made several pictures, "Sweetheart of Sigma Chi," "Air Tonic," "Hot Air," and others. He has composed 73 tunes, some of which have been "Laugh

Ted Fio Rito

Clown, Laugh," "No, No Nora," "King For a Day," "Where the Lillies of the Valley Grow," "I Never Knew," "Now That You're Gone," "Three On a Match" (Ted won't light three on a match) and "College Love."

The one regret of Ted's busy life is that he hasn't time to give more auditions and scout for new talent. But his "hunches" have led to the discovery of many Hollywood and radio stars. He would like to make it a business, but conducting his orchestra is first and foremost. Ted lives in Los Angeles, in the seclusion of a bachelor apartment.

His companion is a canary named "Mr. Peebles." He takes time off for swimming and boxing (Ted, not Mr. Peebles) and likes to spend an occasional night off reading, mainly books on psychology and philosophy, with his radio on full blast.

Ted likes crowds and excitement, and enjoys dancing. However, even on his night off, he is discovered and accosted by other orchestra leaders who value his opinion on professional matters. Ted has no musical prejudices, other than his dislike for extremely "modern" music. He feels that it is an exaggerated, untruthful form of music. Ted prefers slow, smooth harmonies, and he enjoys music for its sadness.

Ted says that he likes people who are bright conversationalists—and yet know when to stop talking. He once had a strong yen to study medicine,

and many of his friends are doctors and surgeons. He gets a lot of fan mail, and always is interested in constructive criticism, whether adverse or favorable. A number of young musicians and would-be song writers also bombard Maestro Fio Rito with letters. Mail from anyone who is "down and out" always depresses him.

Ted's favorite worldly possession is a small piano painted white, and autographed with more than 2,000 names of friends and celebrities with whom he has worked.

Vera Van, who was soloist with the Fio Rito orchestra for ten months could not be more enthusiastic about the personality of her ex-boss. "He's the sweetest man alive!" she says, with enthusiasm.



TED FIO RITO, whose orchestra plays for the hour show, the star of which is DICK POWELL, screen actor. The program is heard on Fridays at 9.30 P.M.



MICROPHONE

THE ORIGINAL U.S. RADIO NEWSPAPER

5¢

RADIO WEEKLY

Programs For Week Ending November 2



Dorothy Lamour, CBS Vocalist

This file including all text and images are from scans of a private personal collection and have been scanned for archival purposes only. This file may be freely distributed, but not sold on ebay, electronically or in reproduced form. Please support the preservation of old time radio.