

Long Wave
Short Wave
News Spots
& Pictures

MICROPHONE

THE ORIGINAL U.S. RADIO NEWSPAPER

5
Cents
the Copy
\$1.50 Year

Volume III, No. 49

WEEK ENDING DECEMBER 14, 1934

Published Weekly

This and That

By Morris Hastings

ALL THIS hubbub about the neglect of the American musician has had at least one result.

It has, without question, brought young Mr. WERNER JANSSEN into almost unprecedented, for an American conductor, fame.



MORRIS HASTINGS

At the tender age of 35 and to the accompaniment of engaging publicity, Mr. JANSSEN has appeared as a guest conductor of the New York Philharmonic (the two Sunday concerts over which he presided were broadcast over the CBS-WABC network) and later in the season he will serve in the same capacity for three weeks.

Last Sunday he conducted the NBC orchestra in its 8 o'clock concert.

Magazines galore have printed his picture and told of how the young man, son of a restaurant proprietor, was determined on a musical career despite his father's protests.

He worked his way through Dartmouth, his father refusing to support him in the hope that WERNER might be cured of his romantic notions, by playing piano in movie theatres and doing other odd jobs.

Graduated from college, JANSSEN was even more insistent on pursuing the musical muse. He turned up, eventually, as a student of composition and conduct-

(Continued on Page 13)

Gigantic Radio Monopoly Is Charged

Sponsors Must Cut Down Advertising, Says Heifetz

World Greet Christmas on Air Networks

Announcements of radio programs for the Christmas season include a greeting by the King of England, a mutual greeting between 25 countries, religious services and a broadcast of a Christmas opera.

Most of the following programs will be broadcast over the combined NBC-WABC and WJZ networks.

The famous catacombs of Rome, Italy, will be the scene of a liturgical service of ancient songs by the Benedictine Choir and a description of the catacombs by Rev. WILLIAM M. DULCEY of St. Anselm's Priory in Washington, D. C. This will be broadcast at 1 P. M. on Christmas Day.

The King of England will send a special greeting to this country during a holiday program to be heard at 9 A. M., also on Christmas Day. At 8 A. M., 25 nations will be linked in a "Merry Christmas" of many languages.

"HANSEL and GRETEL," HUMPERDINCK'S famous Christmas opera, will be broadcast from the Metropolitan Opera House in New York.

A Christmas morning carol service in German will come from the Zion Lutheran Church in Baltimore.

Suggests 2 Minutes Quiet After Music

Violinist Praises Progress Of Radio

By MORRIS HASTINGS

For a number of years, JASCHA HEIFETZ, world famed violinist, refused to make any radio appearances.

Within the last three years this eminent musician has been heard at least half a dozen times as soloist in concerts prepared especially for the radio audience.

Why this change of heart? "Sponsors of radio programs recently have discovered that the fine musical program can also be a profitable program," Mr. HEIFETZ said in an exclusive interview with The MICROPHONE.

"Within the past few years, radio has made such considerable strides both technically and intellectually that musicians can now consider it seriously as an artistic medium.

"Nevertheless, I believe there are still improvements to be made.

"Sponsors must cut down their advertising to a minimum.



JASCHA HEIFETZ, world famous violinist.

"They would be smart to say something like this at the beginning, and again at the end, of a program: So-and-so, manufacturers of such-and-such, do not want to interrupt the concert; they merely wish to state that it is their pleasure."

(Continued on Page 13)

Big Chains Denounced By Priest

By The MICROPHONE'S Special Washington Correspondent

Charges that the National and Columbia broadcasting companies constitute a monopoly have been laid before the Broadcast Division of the Federal Communications Commission by the Very Rev. JOHN B. HARNEY, C. S. P.

Father HARNEY, head of the Missionary Society of St. PAUL the Apostle in the state of New York, compared the national chains to an "octopus" crushing small independents and flaunting demands of educators for a better deal in radio.

His attack was contained in a brief filed with the FCC in support of the drive of non-profit organizations for a specific allotment of the radio channels.

HENRY BELLOWS, legislative representative of the National Association of Broadcasters, submitted a brief opposing any such allocation either by law or regulation of the broadcast division.

He lauded American broadcasting methods and suggested that through co-operation the differences between some educators and the broadcasting stations be adjusted.

Father HARNEY said: "Existing broadcasting structure should be torn down in part and should be largely remodeled and rebuilt along the best American lines.

"A monopoly already (Continued on Page 15)

Pictures

- GUY LOMBARDO, a caricature by LEED *Front Cover*
- JASCHA HEIFETZ, violinist *Page 1*
- PATTI PICKENS *Page 2*
- JACK BENNY, comedian *Page 3*
- DELL ADAMS *Page 4*
- EDDIE DUCHIN *Page 5*
- Colonel STOOPNAGLE *Page 5*
- CAROL DEIS, vocalist *Page 6*
- ROSA PONSELLE *Page 7*
- PHIL DUEY *Page 8*
- JOLLY BILL and JANE *Page 9*
- JAMES MELTON, tenor *Page 10*
- ROSEMARY LANE *Page 12*
- GLEN GRAY *Page 13*
- EL BRENDAL *Page 14*
- GERALDINE FARRAR *Page 15*
- PAUL SPECHT *Back Cover*

Christmas Eve On NBC

On Christmas Eve the services from the ancient Einselden Monastery in Switzerland will be heard on WABC, followed by a special Christmas concert by the Cleveland Symphony Orchestra.

Just before midnight ushers in Christmas Day, the chimes of Old Trinity in New York will sound.

Radio Tour of the World

Broadcasts from the ends of the earth will be heard over the CBS-WABC network this coming Winter.

Arrangements are being made to present a series of programs from Morocco and Egypt, bringing native music and songs to this country.

Special broadcasts from Spain and Italy are included in the new globe-trotting radio tour. The opera at Milan, Italy, will be broadcast and programs are to be heard from Venice, Florence and Naples, including a first-hand description of the excavation activities at Herculaneum, revealing what befell the inhabitants of that Roman town when it was destroyed by Vesuvius.

Early in January, the world's smallest country, Nuremberg, will send an unique program to this country.

Other broadcasts include the Irish Sweepstakes, a songbird recital, a sunrise program from a mountain peak in Switzerland.

News Flashes

WEEKDAYS

- A.M.
- 7.15 WNBX
 - 8.00 WOR
 - 10.00 WABC Network
 - WABC Network
 - 9.45 WEEI
 - 10.40 WLW
 - 10.45 WJZ Network (WBAL Wed., Sat., only)
 - 12.00 Noon WOR WBZ (WBZ not on Sat.)

- P.M.
- 1.15 WMCA Network (Mon., Tues., Fri.)
 - 5.00 WBZ (Not on Thurs., Sat.)
 - 5.05 WOR
 - 6.30 WJZ Network
 - WABC Network
 - 6.35 WEEI
 - 6.55 WABC Network
 - 10.00 WGN
 - 11.00 WLW (not on Wednesday) (Saturday at 10.30)
 - WOR

SUNDAYS

- A.M.
- 10.00 WLW
 - 10.30 WABC Network
 - 11.00 WABC Network
 - WJZ Network
 - 11.15 WOR

- P.M.
- 3.00 WOR
 - 10.55 WPG
 - 11.00 WOR WLW
 - 11.10 WJZ Network
 - 12 M. WABC Network

Silence Is Broadcast

"Sounds of Silence" is the title to the most unique program put on the air so far. It will be heard beginning Saturday, December 8, at 7:30 P. M. and will be broadcast on successive Saturdays thereafter over the CBS-WABC network.

The stars on the first program will be a fishworm and a goldfish. The strange noises made by these seemingly noiseless creatures will be brought to listeners' ears by means of the sound microscope, which magnifies sound 10,000 billion times.

The program will be directed by Dr. E. E. FREE of the staff of New York University.

According to Dr. FREE, even still air is noisy under the sound microscope because the molecules are rushing this way and that. Similarly the noise made by a snowflake dropping on a featherbed could be amplified to put every radio set out of business.

Contents

- News Flashes Box *Page 1*
- JASCHA HEIFETZ recommends period of silence after music on the radio *Page 1*
- This and That by MORRIS HASTINGS *Page 1*
- JACK BENNY tells a joke on himself *Page 3*
- Station Directory *Page 4*
- Radio Lane by JIMMY J. LEONARD *Page 5*
- Studiosity by LES TROY *Page 5*
- Editorials *Page 5*
- ROSA PONSELLE denies she is temperamental *Page 7*
- Children's Page *Page 9*
- WEEI Page *Page 11*
- Police Radio Box *Page 12*
- About GLEN GRAY and his orchestra *Page 13*
- Short Wave Directory *Page 13*
- Reflections by DIANA HERBERT *Page 15*
- Nimblewits by EVERETT SMITH *Page 15*
- Q. and also A. *Page 15*
- "First Maestro of the Air" by HERB JONES *Back Cover*

Saturday, December 8 - "Boston Tea Party," CBS-WABC at 7 P.M.

Highlights

P.M.

- 6.00—"Something Old, Something New," CBS-WABC
- 7.00—"Boston Tea Party," CBS-WABC
- 8.00—Roxy and his Gang, CBS-WABC
- Sigmund Romberg, William Lyon Phelps, NBC-WEAF
- 9.00—Grete Stueckgold, CBS-WABC
- Rose Bampton, NBC-WEAF
- Frank Black, NBC-WJZ
- 9.30—Gibson Family, NBC-WEAF
- Barn Dance, NBC-WJZ
- 10.30—Saturday Revue, CBS-WABC
- "Let's Dance," NBC-WEAF

(All programs are listed in Eastern Standard Time. Central Time is one hour earlier.)

- 6.30 A.M. EST; 5.30 CT
Top of the Morning, WLW, 30 m.
Sun Up, WTAM, 30 m.
- 6.45 A.M. EST; 5.45 CT
Health Exercises, WEAJ WEEI WGY, 1 h.
- 7 A.M. EST; 6 CT
Musical Clock, WBZ KDKA WGAR, 1 h.
Prayer, WLW
Calisthenics, WTAM
- 7.15 A.M. EST; 6.15 CT
Devotion, WLW
Here's Elmer, WTAM
News, WNBX
- 7.30 A.M. EST; 6.30 CT
Yoichi Hiraoka, xylophone, WJZ
Texans, trio, WLW
Paul and Bert, WSM
Musical Clock, WFLA, 30 m.
Organ Reveille, WABC, 30 m.
- 7.45 A.M. EST; 6.45 CT
Pollock and Lawnhurst, WEAJ WGY
Deane Moore, WEEI
Jolly Bill and Jane, WJZ
Bronco Busters, WSM
Plantation Days, WLW
Wake Up and Smile, WCAU, 1 h.
Musical Clock, WNBX
- 8 A.M. EST; 7 CT
Bradley Kincaid, songs, WEAJ WLW
Weather, current events, WEEI
Musical Clock, WGY, 30 m.
Devotions, WJZ WBZ KDKA WFLA
Kindly Thoughts, WHAM
Organ, WSM
Chapel Singers, WABC (25 m. from 8.05)
Devotions, WHAS, 30 m.
- 8.15 A.M. EST; 7.15 CT
Don Hall Trio, WEAJ WEEI WLW WSM
WFLA
Organ, WJZ WHAM KDKA, 30 m. (WBZ, 15 m.)
Early Birds, WNBX
- 8.30 A.M. EST; 7.30 CT
Cheerio, WEAJ WEEI WGY WLW WSM
WFLA WTAM, 30 m.
Weather, WBZ
Lyric Serenade, WABC, 30 m.
Organ, WPG, 30 m.
Wildcats, WHAS
- 8.45 A.M. EST; 7.45 CT
Male Trio, WJZ WBZ WHAM KDKA
Bob Atcher, WHAS
Dog stories, WOR
- 9 A.M. EST; 8 CT
Organ, WEAJ WGY, 30 m. (WEEI, 9.15)
Breakfast Club, WJZ WBZ WSB, 1 h.;
(WHAM WSM WFLA, 9.15) (KDKA, 30 m.)
Joe Emerson, hymns, WLW
Devotion, WSM
Birthday Club, WFLA
Calisthenics, WTAM
Cheer Up, WABC WCAU WIND, 45 m.
(WHAS, 15 m. and at 9.30) (WPG at 9.30)
- 9.15 A.M. EST; 8.15 CT
String Music, WLW
Ted Massey, WNBX
- 9.30 A.M. EST; 8.30 CT
"Banjoers," WEAJ WEEI WGY
Mail Bag, WLW
Natal Pintello's Melody Royals, WNBX
- 9.45 A.M. EST; 8.45 CT
Annette McCullough, "Blues," WEAJ
WTAM
News, WEEI
High Priests of Harmony, WGY
Plough Boys, KDKA
Soprano, WLW (news, 9.55)
Eton Boys, quartet, WABC WPG WHAS
Ken Fontaine, WNBX
- 10 A.M. EST; 9 CT
News, Johnny Marvin, tenor, WEAJ WGY
WSM WFLA (WEEI at 10.05)
Morin Sisters, WJZ KDKA
Home Forum Cooking School, WBZ
Suzanne Littleford, WLW
News, Mellow Moments, WABC WCAU
News, Home Hour, WPG, 1 h.
Markets, river reports, WHAS
Town Crier, WNBX
- 10.15 A.M. EST; 9.15 CT
Morning Parade, WEAJ WGY WTAM,
45 m. (WEEI, 15 m. and at 10.35)
(KDKA WSM WFLA at 10.30)
Edward MacHugh, WJZ WBZ WHAM WSM
Home Forum, KDKA
Livestocks, WLW
Carlton and Shaw, WABC WCAU WHAS
WBBM
Daily Story, WNBX
- 10.30 A.M. EST; 9.30 CT
Singing Strings, WJZ WBZ WHAM KDKA
Esther Hammond, WLW
Let's Pretend, WABC WCAU WBBM, 30 m.
Public School program, WHAS, 30 m.
Dr. W. I. Auber, WNBX
- 10.45 A.M. EST; 9.45 CT
News, Originalities, Jack Owens, tenor, WJZ
WHAM KDKA WGAR
News, Musicale, Highway Safety talk, WBZ
Nora Beck Thumann, soprano, WLW

- Golden Thoughts, WFLA
Morning Concert, WNBX
- 11 A.M. EST; 10 CT
Alma Schirmer, pianist, WEAJ WEEI
Galaxy of Stars, WGY WLW WTAM
Grace and Eddie, WJZ WBZ KDKA WSM
WGAR
Organ, WHAM
Southerners, WFLA, 30 m.
George Johnson's Orchestra, WABC WCAU
WPG WHAS WBBM, 30 m.
Ludlow Program, WNBX, 30 m.
- 11.15 A.M. EST; 10.15 CT
Vass Family, WEAJ WEEI WGY WSM
WTAM
Tony Wons, WJZ WBZ WHAM WGAR
Kiddies Klub, KDKA 45 m.
Bailey Axton, tenor, WLW
- 11.30 A.M. EST; 10.30 CT
Down Lovers' Lane: Gloria La Vey, Walter
Preston, WEAJ WSM WTAM, 30 m.
(WEEI, 25 m.) (WLW WFLA, 1.45)
Children's Theatre, WGY, 27 m.
Hessberger's Bavarian Orchestra, WJZ
WHAM, 30 m.
Federation of Women's Clubs, WBZ, 30 m.
Federation of Music Clubs, WLW
Deep River, WFLA
Miniatures, WABC WPG WHAS
Melody Girl, WNBX
- 11.45 A.M. EST; 10.45 CT
Carnegie Hall Children's Party, Frank
Speaight, WABC WPG WHAS
Brattleboro program, WNBX
- 12 NOON EST; 11 A.M. CT
Armchair Quartet, WEAJ WEEI WSM
WTAM
John Sheehan, tenor, WGY
Fields and Hall, WJZ KDKA WBAL
WGAR
- Weather, Monitor Views News, WBZ, 30 m.
4-H Club, WHAM
Salt and Peanuts, WLW
Noonday Varieties, WFLA
Frederick William Wile, WABC WPG
Pikeville College, WHAS
Current Events, WOR
Eddie Prior's Orchestra, WMCA, 30 m.
Harold Turner, pianist, WGN
Hollywood Inn, WNBX
- 12.15 P.M. EST; 11.15 A.M. CT
Comedy Team, WEAJ WEEI WSB WTAM
The Vagabonds, WGY
Genia Fonarova, soprano, WJZ KDKA
WBAL WSM WGAR (WLW at 12.17)
Weather, WLW
American Vocation Association Convention,
WABC WCAU WPG WHAS
Ensemble, WOR
Dan Baker, tenor, WGN
- 12.30 P.M. EST; 11.30 A.M. CT
Merry Madcaps, WEAJ, 30 m.
Jack, Del and Ray, WEEI, 30 m.
Farm and Home Hour, WJZ WBZ WHAM
KDKA WLW WSM WFLA, 1 h.
Abram Chasins, piano pointers, WABC
WCAU WHAS WBBM, 30 m. (WPG at
12.45)
"The Treasure of Lahun," WOR
Rigo Santiago, songs, WMCA
Markets, music, WGN
Bobby Bruce, WNBX
- 12.45 P.M. EST; 11.45 A.M. CT
The Scottish Minstrel, WOR
Three Blue Chips, WMCA
June Baker, talk, WGN
Farm Bureau, WNBX
- 1 P.M. EST; 12 NOON CT
Jan Brunesco's Concert Ensemble, WEAJ
WTAM, 30 m. (WEEI from 1.10) (WGY
at 1.15)
Stocks, WEEI, WGY
George Hall's Orchestra, WABC WPG, 30
m. (WHAS, 15 m.)
Dance Tunes, WOR, 30 m.
Charlie Davis' Orchestra, WMCA, 30 m.
Organ, WGN
4-H Club, WNBX
- 1.15 P.M. EST; 12.15 CT
Weather, Georgia Wildcats, WHAS
Dorling Sisters, WGN
- 1.30 P.M. EST; 12.30 CT
Russ Lyon's Orchestra, WEAJ WEEI WFLA
WGY
Farm Forum, WJZ WBZ WSM
Esther Velas' Ensemble, WABC WPG
WHAS, 30 m.
Theatre Club, WOR
Dick Blaine's Orchestra, WMCA, 30 m.
Markets, Midday Service, WGN, 30 m.
- 1.45 P.M. EST; 12.45 CT
Foreign Policy Association Luncheon, WEAJ
WGY, 1 h., 15 m.
Southerners, WGY
Word and Music, WJZ KDKA WSM
WFLA, 30 m.
4-H Club, WBZ, 30 m.
Home Loan talk, dance tune, WLW
Orchestra, WOR
- 2 P.M. EST; 1 CT
Second Annual Students Conference, George
Washington University, WJZ WBZ WHAM
KDKA WSM, 30 m.
Dan Russo's Orchestra, WABC WPG
WHAS, 30 m.
Dance orchestra, WOR, 30 m.
Ragamuffins, WMCA

A Pretty Third



PATTI PICKENS is one of the three PICKENS Sisters who so frequently are guests on NBC programs in addition to presenting programs of their own several times a week.

- 2.15 P.M. EST; 1.15 CT
Tony Cabooch, WMCA
- 2.30 P.M. EST; 1.30 CT
Don Pedro's Orchestra, WJZ WBZ KDKA,
30 m.
- Round Towners, quartet, WABC WPG
WHAS, 30 m.
Martha Deane, WOR, 30 m.
Roads of Romance, WMCA, 30 m.
Orchestra, WNBX
- 3 P.M. EST; 2 CT
Keenan and Phillips, piano duo, WEAJ
Oxford-Harvard Debate, WEAJ WEEI WGY
WLW WSM, 30 m.
Poetic Strings, WABC WPG WHAS, 30 m.
Musical Revue, WOR, 30 m.
Brooklyn Symphony Orchestra, WMCA, 1 h.
30 m.
Smiling Twins, WNBX
- 3.15 P.M. EST; 2.15 CT
Quartet, WEAJ
- 3.30 P.M. EST; 2.30 CT
Week-End Revue, WEAJ WGY WLW WSM
1 h.
- Saturday Songsters, WJZ WBZ WFLA
Herb Strauss' Ensigns, WABC WPG WHAS,
30 m.
Pianist, WOR
Sunset Ramblers, WNBX
- 3.45 P.M. EST; 2.45 CT
Heat Waves, trio, WOR
Chester Rollickers, WNBX
- 4 P.M. EST; 3 CT
Don Carlos' Orchestra, WJZ WBZ KDKA
WFLA
Emery Deutsch's Orchestra, WABC WPG,
30 m. (WHAS, 25 m.)
Essex County Symphony Orchestra, WOR,
45 m.
- 4.15 P.M. EST; 3.15 CT
High and Low, WJZ WBZ KDKA WFLA
Red Ranny, WNBX
- 4.30 P.M. EST; 3.30 CT
"Our Barn," WEAJ WEEI WGY WFLA,
30 m.
Library of Congress Musicale, WABC WPG
WHAS WCAU WBBM, 1 h.
Al McCullough, WNBX
- 4.45 P.M. EST; 3.45 CT
"Science in Your Home," WOR
- 5 P.M. EST; 4 CT
Eddie Duchin's Orchestra, WEAJ WEEI
WSM, 30 m. (WGY at 5.15)
Musical program, WGY
Stanleigh Malotte, WJZ WBZ KDKA WLW
Colleagues, WFLA, 30 m.
Health talk, current events, WOR
"Aperitif," WMCA, 30 m.
- 5.15 P.M. EST; 4.15 CT
Jackie Heller, tenor, WJZ WBZ KDKA
WTAM
Tim Healy, WLW
Western Drama, WOR

- 5.30 P.M. EST; 4.30 CT
Our American Schools, WEAJ WEEI WGY
WSM WTAM, 30 m.
George Sterney's music, WJZ WBZ
(WJAM at 5.35)
Bill and Alex, KDKA
Police News, WHAM
Whistler and Dog, WLW
Gypsies, WFLA
Little Jack Little's Orchestra, WABC WCAU
WPG
Out of the Dusk, WHAS, 30 m.
Dog talk, WOR
Sally's Party, WMCA, 30 m.
Joseph Hassmer, baritone, WGN
- 5.45 P.M. EST; 4.45 CT
Ranch Boys, WJZ WBZ WHAM KDKA
WLW WFLA
"Robinson Crusoe, Jr.," WABC WCAU
"Miniatures," WPG
Jimmy Allen's Air Adventures, WOR
Musicale, WGN, 1 h.
- 6 P.M. EST; 5 CT
Tom Coakley's Orchestra, WEAJ WGY
WFLA, 30 m. (WSM, 8 m.)
Evening Tattler, WEEI, 30 m.
Angelo Ferdinando's Orchestra, WJZ, 28 m.
(KDKA at 6.15)
Irish Minstrels, WBZ
Buddy Biller, KDKA
Musical Memories, WFLA, 30 m.
"Something Old, Something New," Arthur
Murray, Earl Oxford, WABC WHAS, 30 m.
Dance orchestra, WOR, 30 m.
Dick Mansfield's Orchestra, WMCA
- 6.15 P.M. EST; 5.15 CT
Comedy Stars, WHAM
Save a Life, WMCA
- 6.30 P.M. EST; 5.30 CT
News, Peg La Centra, songs, WEAJ
Rhyming Reporter, news, WEEI
News, Brevities, WGY
Bog Newhall, WLW
News, sports talk, WTAM
News, piano, organ, WJZ KDKA WSM
WFLA
News, weather, WBZ
Deed-I-Do Club, WHAS
Jack Armstrong, All American Boy, WBBM
talk, "The Old New World," WOR
Buddy Cantor, Film Chat, WMCA
- 6.45 P.M. EST; 5.45 CT
Sport Parade, Thornton Fisher, Benny Leon-
ard, WEAJ WEEI WGY WLW WTAM
Master Builder, WJZ KDKA WSM
World in Review, WBZ
Radio Special, WFLA
Margaret Brainard, Jerry Cooper, baritone,
(news at 6.55) WABC WCAU
Woody and Willie, WHAS (news, 6.55)
John Kelvin, tenor, WOR
Sagebrush Harmonizers, WMCA
Mark Love, bass, WGN
- 7 P.M. EST; 6 CT
Rev. Walter Van Kirk, WEAJ WTAM
Piattsburgh Talent, WGY, 30 m.
K. F. D. Hour, WLW, 30 m.
Musical Scoreboard, WSM
John Herrick, baritone, WJZ KDKA WFLA
Edward Macrugh, baritone, WBZ
Play, "Boston Tea Party," WABC WCAU
WBT, 30 m.
Weather, Cross-roads, WHAS
Al Williams, aviator, WOR
Music of Today, WGN
- 7.15 P.M. EST; 6.15 CT
Jamboree, WEAJ WTAM, 30 m. (WSM,
15 m.) (WFLA at 7.30)
After Dinner Revue, WEEI
Henry King's Orchestra, WJZ, 30 m. (KDKA
15 m.) (WBZ at 7.30)
Radio Nature League, WBZ
International Sunday School Lesson, WSM
Maverick Jim, WOR, 30 m.
Maximilian Berge's music, WMCA
Ensemble, WGN
- 7.30 P.M. EST; 6.30 CT
Pic and Pat, WEEI, 30 m.
Whistler and Dog, WGY
Orchestra, KDKA, 30 m.
University of Cincinnati program, WLW
Asher and Little Jimmie, WSM
Sounds of Silence, "Fishworms and Gold-
fish," WABC WHAS
Gypsy Orchestra, WMCA
Sports Reviewer, WGN
- 7.45 P.M. EST; 6.45 CT
Floyd Gibbons, WEAJ WGY WLW WFLA
WTAM
Pickens Sisters, trio, WJZ WHAM WGAR
Christian Science Monitor Interview, WBZ
Forty-Niners, WSM
Lawyer and Public, Gov. Paul V. McNutt,
Ind., WABC WCAU WHAS
Jack Arthur, baritone, WOR
One-Man Minstrel, WMCA
Ensemble, WGN
- 8 P.M. EST; 7 CT
Sigmund Romberg, Let Her Go; Southern
Lullaby; "Umpa," sketch, William Lyon
Phelps, WEAJ WEEI WGY WLW
WTAM, 1 h.
Art in America, "Impact of Modern Art,"
WJZ WBZ KDKA WBAL, 20 m. (Grace
Hayes, songs, at 8.20)
Minstrel Show, WSM, 30 m.
The Coconut, WFLA, 30 m.
Roxy's Gang, WABC WCAU WHAS
WBBM WBT KMOX, 45 m.
Concert Orchestra, WPG, 30 m.
Organ Recital, WOR
Three Little Funsters, WMCA
Professor T. V. Smith, U. of Chicago, WGN
- 8.15 P.M. EST; 7.15 CT
Jimmy Allen's Adventures, WHAM
Armand Vecsey's Ensemble, WOR
Five-Star Final, WMCA
Glee Club, WGN
- 8.30 P.M. EST; 7.30 CT
George Olsen's music, Ethel Shutta, WJZ
WHAM KDKA WBAL WFLA, 30 m.
ERA Orchestra, WBZ, 30 m.
Freddie Rose, Delmore Bros., WSM, 30 m.
Sisters of the Uke, WPG
Dance Orchestra, WOR, 30 m.
Sidewalks of New York, WMCA
Kay Kyser's Orchestra, WGN, 30 m.
- 8.45 P.M. EST; 7.45 CT
Mary Courtland, Robert Armbruster's music,
WABC WCAU WHAS WBBM KMOX

- Ken Jeffrey, pianist, WPG
Louis K. Anspacher, WMCA
- 9 P.M. EST; 8 CT
Rose Bampton, Nathaniel Shilkret's music,
WEAJ WEEI WGY WLW WTAM, 30 m.
Frank Black's Orchestra, John B. Kennedy,
WJZ WBZ WHAM KDKA WGAR,
30 m.
"Possum Hunters," Uncle Dave Macon,
"Gully Jumpers," WSM, 30 m.
Invitation Serenade, WFLA, 30 m.
Grete Stueckgold, Variety Singers, Andre
Kostelanetz' Orchestra; Indian Love Call,
WABC WCAU WPG WHAS WBBM
WBT KMOX, 30 m.
Housewarming, WOR, 30 m.
Radio Editor, WMCA WIP, 30 m.
Little Theatre, WGN
- 9.30 P.M. EST; 8.30 CT
Gibson Family; Lois Bennett, Conrad Thi-
bault, Jack, Loretta Clemens, Don Voor-
hees' Orchestra, WEAJ WEEI WGY
WLW WTAM, 1 h.
Barn Dance, WJZ WBZ WHAM KDKA
WGAR, 1 h. (WFLA at 10)
Nap and Dee, Crook Bros. Band, Bronco
Busters, WSM, 30 m.
Pampas Nights, WFLA, 30 m.
Richard Himber's Orchestra, Joey Nash,
WABC WCAU WHAS WBBM KMOX,
30 m.
Aldrich's Imperial Hawaiians, WPG, 30 m.
"Debuts," WOR, 30 m.
"Op'ry House," "No Mother to Guide
Her," WMCA, 1 h.
Wayne King's Orchestra, WGN
- 9.45 P.M. EST; 8.45 CT
Jan Garber's Orchestra, WGN
- 10 P.M. EST; 9 CT
Asher and Little Jimmie, WSM
Band, Edward D'Anna, conducting, WABC
WHAS WBBM KMOX, 30 m.
Dance Tunes, WPG, 30 m.
Florence Richardson's Orchestra, WOR, 30 m.
Tomorrow's Tribune, WGN
- 10.15 P.M. EST; 9.15 CT
"Lasses and Honey, WSM
Earl Burnett's Orchestra, WGN
- 10.30 P.M. EST; 9.30 CT
"Let's Dance," Kel Murray, Xavier Cugat,
Benny Goodman and orchestras, WEAJ
WGY WLW WFLA, 3 h. (WEEI at
10.37)
Weather, WEEI
Hal Kemp's Orchestra, WJZ WBZ, 30 m.
(KDKA at 10.45)
Jan Campbell's Orchestra, WHAM
Behind the Law, KDKA,
Possum Hunters, Uncle Dave Macon, Bronco
Busters, WSM, 30 m.
McL Emerson's Orchestra, WGAR, 30 m.
Saturday Revue, WABC WCAU WPG WIND,
30 m.
Studio Party, WHAS, 30 m.
Julie Wintz' Orchestra, WOR, 30 m.
Radio Scandals, WMCA, 30 m.
Dorling Sisters, WGN
- 10.45 P.M. EST; 9.45 CT
Kay Kyser's Orchestra, WGN
- 11 P.M. EST; 10 CT
Dorsey Bros. music, WJZ, 30 m. (WBZ,
11.15)
Weather, WBZ
Delmore Brothers, Dixie Liners, Crook
Bros. Band, WSM, 30 m.
Elder Michaux' Congregation, WABC
WIND, 30 m.
Weather, news, Orchestra, WPG, 45 m.
Gray Gordon's Orchestra, WHAS, 35 m.
Earl Hines Music, WBBM
Weather, Current Events, orchestra, WOR,
30 m.
Voice of Romance, WMCA
Ted Weems' Orchestra, WGN
- 11.15 P.M. EST; 10.15 CT
Dance Tunes, KDKA, 30 m.
Bicycle Races from Madison Square Garden,
WMCA
Organ, Dream Ship, WGN
- 11.30 P.M. EST; 10.30 CT
Freddie Martin's Orchestra, WJZ WBZ
WGAR, 30 m. (KDKA at 11.45)
Tommy Tucker's music, WHAM, 30 m.
Glen Gray's Orchestra, WABC KMOX
WBBM, 30 m. (WHAS at 11.35) (WPG
at 11.45)
Sweeney Sisters, WSM
Will Osborne's Orchestra, WOR, 30 m.
Blue Rhythm Band, WMCA, 30 m.
Wayne King's, Jan Garber's, Ted Weems'
Orchestras, WGN, 1 h.
- 11.45 P.M. EST; 10.45 CT
Robert Lum, WSM
- 12 MIDNIGHT EST; 11 P.M. CT
Enric Madriguera's Orchestra, WJZ WBZ,
30 m.
Frank Skultety's Orchestra, WHAM, 30 m.
Broadcast to Far North, KDKA, 30 m.
Dixie Clodhoppers, WSM
Joe Haymes' Orchestra, WABC WCAU
KMOX, 30 m.
Dance orchestra, WPG
Cotton Pickers, WHAS, 30 m.
Anthony Trini's Orchestra, WOR, 30 m.
Day's End, WMCA, 30 m.
- 12.15 A.M. EST; 11.15 P.M. CT
Dan Russo's Orchestra, WBBM
- 12.30 A.M. EST; 11.30 P.M. CT
Paul Pendarvis' music, WJZ WBZ KDKA,
30 m.
Pancho's Orchestra, WABC WHAS KMOX
WBBM, 30 m.
Ted Brown's Orchestra, WOR, 30 m.
Archie Bleyer's Orchestra, WMCA, 30 m.
Earl Burnett's Orchestra, WGN
- 1 A.M. EST; 12 MIDNIGHT CT
Claude Hopkins' Orchestra, WABC, 30 m.
Clyde Lucas' Orchestra, WBBM, 30 m.
Manhattan's Orchestra, WMCA, 30 m.

Eva's Liquid Breakfast



EVA HADRABOVA, soprano of the Vienna Opera, who made her American debut on HOWARD BARLOW'S "Melody Masterpiece" program, can't speak English. On her way to America on the Laconia, she ordered eggs and toast in the dining salon and was served . . . lemonade.

ARE YOU SMART AT SOLVING THINGS . . . ?

"DAD'S PUZZLER"

IS A REAL TEST OF BRAINS

The Puzzle consists of nine units arranged in a box. All you've got to do is get block marked "A" to where "C" is located. Looks perfectly simple, yet few have solved it, but it CAN be done. You're eligible to Brain Trust when you succeed. Try it on your SMART friends. Solution available. Send 25c in coin for complete puzzle in box.

25c Postpaid **HAMILTON SPECIALTY CO.** 25c Postpaid
U.S.A. Dept. M, 135 Lockwood Ave., New Rochelle, N.Y. U.S.A.

Radio Is Fighting For Improved Insulation of Household Devices

Goldsmith Is Head of Drive In The U.S.

By The MICROPHONE'S Special Washington Correspondent

Radio technicians have launched a campaign to obtain co-operation of manufacturers of flatirons, hair-curlers, mechanical refrigerators and other devices to minimize their interference with good radio reception.

Officials of the Federal Communications Commission have given their endorsement to the drive, which had its inception at the recent international technical radio convention in Lisbon, Portugal.

Better insulation of these household devices is indicated, so they will not produce extraneous electrical impulses and cause wheezes and roars from the radio receiving set.

The domestic drive is being headed by Dr. ALFRED N. GOLDSMITH, radio consulting engineer, following suggestions at the recent meeting of radio experts at Rochester, N. Y.

Dr. GOLDSMITH will appoint a committee consisting of representatives of the Federal Communications Commission, Bureau of Standards, Edison Electrical Institute, American Radio Relay League, National Association of Broadcasters and other interested groups, to seek voluntary co-operation of manufacturers to take radio reception into consideration when they turn out a hair curler or a street car.

W. R. G. BAKER, chairman of the engineering division of the Radio Manufacturers' Association and vice-president of R. C. A.-Victor Co., are plugging the new campaign.

80 P.C. in Iceland Have Radio Sets

By The MICROPHONE'S Special Washington Correspondent

Iceland may not be a large country, but the natives go in for radio in a big way.

The number of registered listeners December 31, 1931, was 4,100 or 38 per cent of the population; in 1932, it was 5,418 or 50 per cent; at the end of 1933, 8,030, or 72 per cent, while on May 1, 1934, the total had jumped to 8,710 or 80 per cent of the population.

A forecast that by the end of 1934 the number of radio listeners will reach 10,000 comes from the director-general of telegraphs for Iceland.

Old Time Music Hall Is Revived

"HAMMERSTEIN'S Music Hall of the Air," heard over the WABC-Columbia network at 2.30 P. M. on Sundays, will reproduce the atmosphere of the old Victoria Music Hall, which set the pace for the variety show in the Gay Nineties.

Songs and music on the program will bring back memories of such old-timers as HARRY BREEN, SOLLY LEE, ELEANORA DUSE, EDYTHE CHAPPELLE and WILL ROGERS, CHARLIE CHAPLIN and EVELYN NESBIT.

Jack Benny Tells A Joke On Himself And Discusses Comics

He Fails To 'Panic 'Em' at London Luncheon

By G. CARLETON PEARL

JACK BENNY, one of radio's best comedians, stepped from his character as president of the two-mile-long Black Creek railroad in the play, "Bring On the Girls," to talk about the problems of a radio comedian.

Mr. BENNY, unlike many others of his craft, does not depend on a dialect or a grotesque appearance to make himself funny. He relies entirely on situation and incongruity which, as he himself says, is the basis for all comedy.

He has one great advantage that many comedians do not have. The same man who collaborates with BENNY in the scripts for his Sunday evening radio show, HARRY COHN, has been with him for three years and knows exactly what will be funny on a BENNY program and what will not.

BENNY off the stage is not funny, nor does he try to be. He admits that someone else can be the life of the party while he sits back and enjoys himself thoroughly, with the inevitable cigar.

He tells the story about a time he was in London at a luncheon. It seems that he and BURNS (of BURNS and ALLEN) have the same European representative and consequently meet some of the same people when they are in England.

BURNS got to London before BENNY. He told everyone that BENNY was the funniest person he ever had seen at a party and would, in a word, "panic them."

BENNY, all unsuspecting, arrived at the luncheon, his own quiet self. No one spoke. All seemed waiting for something. Suddenly one Englishman spoke to BENNY's representative.

"Say," he said, "When is BENNY going to begin?"

BENNY spoke of the diffi-



JACK BENNY, comedian heard over the NBC-WJZ network on Sunday evenings at 7, whose expose appears in the accompanying article.

culties of being a comedian.

"It is more difficult for a comedian to make people laugh than it is for the comedian's stooge or straight man. Naturally, people expect a comedian to be funny. But they do not generally expect it from one who is not.

"That is why FRANK PARKER's remarks on my program are so funny. One would not expect PARKER to say them. And that is why comedians so often make themselves the brunt of so many jokes.

"Comedians," said BENNY, "always have enemies, or at least, people who think they are terrible. Take a musical program, for instance. Everyone who likes music of one sort or another will like most musical programs.

"It is not so with a comedian. So many different senses of humor are represented in a radio audience that different comedians are needed to please each group."

JACK BENNY has been in "show business" for 22 years and "Bring On the Girls," the new play by GEORGE S. KAUFMAN and MORRIE RYSKIND, is his first legitimate play. BENNY says he likes

Stooges Are Funnier Than Regular Comedians

this type of work immensely.

"Anything I do, on the stage or on the radio," he said, "I enjoy. The only thing I do not like is being called on to say something impromptu at a gathering. As long as I have some sort of an official stage under me, I am all right."

While at luncheon last week with members of the press, BENNY received a telegram. He read it:

"My wife and I arrive tomorrow with the junk."

—HARRY COHN.

"The junk," said BENNY, "is my next week's program."

Vesuvius to Broadcast

The secrets of famous Mount Vesuvius in Italy will be broadcast to the world over the NBC networks when Italian radio engineers, equipped with pack transmitters, will accompany scientists into the heart of the fiery crater. The expedition will take place within two months.

Mounties Get Their Men In Ontario Radio Battle

Always, according to tradition, the movies, radio dramas and one thing and another, the Royal Canadian Mounted Police get their man. And they have not failed in the radio battle in Ontario.

Trailed down and accused by the Mounties, 50 citizens of London, Ontario, already have appeared in court there for not having their current radio receiving licenses.

The fee for a radio receiving license is \$2 yearly—for those who take one out. It cost those who appeared in court in London a total of \$10; \$2 for the license fee, \$5 fine for not taking it out, and \$3 for costs of court.

Most of the erring 50 paid the clerk of court without the formality of appearing before the magistrate. Those who did appear before him were armed with ingenious excuses, none of which the court considered valid.

A defendant submitted that his radio set would not bring in \$2 worth of entertainment a year. Another said he could play records at home on his own phonograph for nothing, so why pay \$2 a year to hear some radio station broadcast records? A third stated that his set was so old it would bring in but one blast, for which he had not intended paying \$2.

Kaltenborn vs. Crime

H. V. KALTENBORN, news analyst for the CBS, has been invited by United States Attorney General HUGH S. CUMMINGS to represent the radio industry at the National Conference on the Cause and Cure of Crime, to be held in Washington the second week in December. KALTENBORN is at present engaged in making a survey of the amount of crime news broadcast.

Short Wave Fans Turning To The East

By GEORGE LILLEY

The lure of hearing stations as they broadcast on the far shores of the Pacific still is strong enough in the hearts of short wave fans to set many of them throwing on the switches in the early hours of the morning.

When the sun peeps out of the East here, night time is beginning to creep over the cities of the Orient. Broadcasting activities fall into full swing; the short wave stations, what few there are, cast out their waves to the good folks scattered in the more distant sections of the land. Some of these waves stray from the Eastern Hemisphere. A few now are reaching Eastern America.

The newest to filter out of the Western skies is RV15, located at Khabarovsk, Eastern Siberia, north of China. This transmitter, which is the official Soviet outlet for the Far East, operates on a relatively high short wave channel, 76.65 meters (4.25 megacycles), and for this reason is audible in America only during the months of Winter, when darkness exists all the way between the Atlantic and the Countries on the far side of the world.

RV15 radiates a great variety of Soviet propaganda for the

(Continued on Page 7)

Musical Weatherman



JACK DENNY, NBC orchestra leader, says he knows how it feels to be a meteorologist. Asked the other night to list the songs for which he's had most requests, he named: "Rain," "Lost in a Fog" and "Out in the Cold Again." "It sounds like a weather report," JACK observed.

Ambitious Boys

Who Need Money?

SET UP your own business in your own neighborhood by acting as direct sales representative for the MICROPHONE, Original United States Radio Newspaper and the fastest growing publication in this country.

I do NOT offer you a chance to win an air rifle, a football, a pair of skates, a bicycle or any other article you may have or would prefer to select for yourself and buy yourself with money you earned yourself by your own efforts. I give no prizes.

I DO offer you a legitimate chance to earn a steady, assured income, without interference with your school work or after-school fun. At the same time you will render a real service to your neighbors and learn something worth while.

IF YOU are genuinely interested, write for my plan. But please don't waste your time or my time if you are looking for something for nothing; I am older than you are and I never yet found it.

JOSEPH H. GOODMAN,
The MICROPHONE,
No. 34 Court Square,
Boston, Massachusetts.

Sunday, December 9 - Leslie Howard on NBC-WJZ at 2.30 P.M.

Highlights

- A.M.
10.00—Dr. S. Parkes Cadman, NBC-WFAF
P.M.
2.30—Radio Theatre, Leslie Howard, "Berkeley Square," NBC-WJZ
3.00—New York Philharmonic, Bruno Walter, conductor, CBS-WABC
4.00—Adventures of Sherlock Holmes, NBC-WJZ
7.00—Jack Benny, Mary Livingstone, NBC-WJZ
8.00—Detroit Symphony Orchestra, Victor Kolar, conductor, CBS-WABC
Symphony Orchestra, Ruggerio Ricci, violinist, NBC-WJZ
Opera in English, Deems Taylor, NBC-WFAF
10.00—Giovanni Martinelli, NBC-WFAF

(All programs are listed in Eastern Standard Time. Central Time is one hour earlier.)

- 8 A.M. EST; 7 CT
Bradley Kincaid, songs, WFAF WFLA
Tone Pictures, Richard Maxwell, tenor, mixed quartet, WJZ WBZ WLW, 29 m.
Organ Reveille, WABC (25 m. from 8.05)
8.15 A.M. EST; 7.15 CT
Melody Hour, WFAF WFLA, 43 m.
8.30 A.M. EST; 7.30 CT
William Meeder, organist, WJZ WHAM, 30 m. (WBZ at 8.45)
Weather, WBZ
Church Forum, Rev. King, WLW, 30 m.
Lyric Serenade, WABC WPG
8.45 A.M. EST; 7.45 CT
Spotlight WABC
9 A.M. EST; 8 CT
Balladeers, WFAF WGY WSM WFLA
Coast to Coast on a Bus, Milton J. Cross, WJZ WBZ KDKA WLW WGAR, 1 h.
Sunday Morning at Aunt Susan's, WABC WCAU WPG WHAS, 1 h. (WHAS, weather, 8.59)
Bible Study, KMOX
9.15 A.M. EST; 8.15 CT
Renaissance Quintet, WFAF WGY WSM WFLA
9.30 A.M. EST; 8.30 CT
Vocal Trio, WFAF WEEI WGY WSM WFLA
Family Worship Hour, WHAM, 30 m.
9.45 A.M. EST; 8.45 CT
Alden Edkins, bass, WFAF WEEI WGY WSM WFLA
10 A.M. EST; 9 CT
Dr. S. Parkes Cadman, WFAF WGY WSM WFLA, 30 m.
Southernaires, Levee Band, male quartet, WJZ WBZ KDKA WHAM WBAL WLW WGAR, 30 m. (WLW, news, 5 m.)
Church of the Air, WABC WPG WHAS KMOX, 30 m.
10.15 A.M. EST; 9.15 CT
Church Service, WEEI
10.30 A.M. EST; 9.30 CT
Breen and de Rose, Bob Emery, WFAF WEEI WGY
Morning Musicals, WJZ WBZ WLW WFLA, 30 m. (WSM, 15 m.)
Baptist Church service, WHAM, 1 h., 30 m.
KDKA Orchestra, KDKA, 30 m.
News, Patterns in Harmony, WABC News, Sunday Jail service, WHAS, 30 m.
10.45 A.M. EST; 9.45 CT
Mexican Typica Orchestra, WFAF, 30 m. (new at 11.00) (WGY, 15 m.)
Trinity Church Service, WEEI, 1 h., 30 m.
Between the Bookends, WABC WPG
Baptist Church Service, WSM, 45 m.
11 A.M. EST; 10 CT
News; Chapel Services, WGY, 1 h.
News, Nathan Stuart, baritone, WJZ WBZ WFLA
Calvary Episcopal Church, KDKA, 1 h.
Cadle Tabernacle Choir, WLW, 30 m.
Children's Hour, WABC, 1 h.
Cleveland String Quartet, WBBM, 30 m.
Ensemble, WPG, 30 m.
Church Service, WHAS, 30 m.
11.15 A.M. EST; 10.15 CT
Violin, Rudolph Bocho, WFAF
Roger B. Whitman, WJZ WBZ
11.30 A.M. EST; 10.30 CT
Major Bowes' Family, WFAF WFLA, 1 h. (WSM, 30 m.)
Samovar Serenade, WJZ
Rabbi Tarshish, "Lamp Lighter," WLW, 30 m.
Salt Lake City Tabernacle, WBBM WHAS WPG, 1 h.; WABC from 12.
High School Orchestra, WPG, 30 m.
Christian Science Church, KMOX, 1 h.
11.45 A.M. EST; 10.45 CT
Anna Blanche Honess, WJZ
Weather, WBZ
12 NOON EST; 11 A.M. CT
Piano Interlude, WGY
Musical Comedy; Sam Hearn, Alice Frost, Betty Jane, Larry Grant, WJZ WBZ KDKA WLW, 30 m.
Musical program, WHAM, 30 m.
Church Service, WSM, 1 h.
In Old Bohemia, WGAR, 30 m.
University of Chicago Chapel, WGN, 1 h.
Uncle Don's Comics, WOR, 30 m.
12.15 P.M. EST; 11.15 A.M. CT
Morey Pearl's music, WEEI
Explorers' Club, WGY
Mid-day Idylls, WMCA
12.30 P.M. EST; 11.30 A.M. CT
University of Chicago Round Table discussion, WFAF WEEI WGY, 30 m.
Radio City Music Hall Symphony, Wagner program, WJZ WBZ WHAM KDKA WLW, 1 h. (WSM WGAR at 1) (WFLA at 12.45)
Master's Music Room, WGAR, 30 m.

- Tito Guizar's Midday Serenade, WABC
WCAU WPG WHAS KMOX WBBM
Sugar Cane, songs, WOR
Jeanne Carroll, WMCA
12.45 P.M. EST; 11.45 A.M. CT
Pilgrimage to Milton's Cottage, WABC
WCAU WPG WHAS KMOX
Rodney Entertainers, WMCA
Pauline Alpert, pianist, WOR
1 P.M. EST; 12 NOON CT
Dale Carnegie, "Little Known Facts About Well-Known People," Leonard Joy's Orchestra, WFAF WEEI WGY, 30 m.
Church of the Air, WABC WPG WHAS, 30 m. (WHAS, weather, 2 m.)
On Wings of Melody, WOR
Manhattan Concert Band, WMCA, 30 m.
Comics, WGN, 45 m.
1.15 P.M. EST; 12.15 CT
Russell Brown's Ensemble, KMOX
String Quartet, WOR, 45 m.
1.30 P.M. EST; 12.30 CT
Mary Small, William Wirges' Orchestra, WFAF WEEI WGY, 30 m.
National Youth Conference, WJZ WBZ KDKA WSM, 30 m.
Rochester Catholic Hour, WHAM, 30 m.
Theo Hahn's Orchestra, WLW, 30 m.
Little Jack Little, WABC WCAU WHAS KMOX WBBM
Instrumental Trio, WPG
1.45 P.M. EST; 12.45 CT
Myrtle Swindle, WFLA
Pat Kennedy, tenor, Art Kassel's Orchestra, WABC WCAU WHAS KMOX WBBM
Wandering Poet, WPG
Whistler and Dog, WGN
2 P.M. EST; 1 CT
Road to Romany, WFAF WEEI WLW, 30 m. (WGY at 2.15)
Carmelo Cascio, pianist, WGY
Anthony Frime, poet prince, WJZ WBZ KDKA
Down Melody Lane, WHAM, 30 m.
Poem and Song, WSM
Weather, WFLA
Lazy Dan, the Minstrel Man, WABC WHAS WCAU KMOX WBBM, 30 m.
Organ, WPG, 30 m.
Forum Hour, WOR, 30 m.
Mark Love, bass, WGN
Greenwich Sinfonietta, WMCA, 1 h.
2.15 P.M. EST; 1.15 CT
Bob Becker, Dog Chats, WJZ WBZ KDKA WGAR
Melodies, WSM, 30 m.
Garden of Melody, WFLA
Ensemble, WGN
2.30 P.M. EST; 1.30 CT
Gene Arnold's Commodores, WFAF WEEI WGY, 30 m.
Radio Theatre, Leslie Howard, "Berkeley Square," WJZ WBZ WHAM KDKA WBAL WLW, 1 h.
Dramatizations, WGAR, 1 h.
Music Hall of the Air, WABC WCAU WHAS KMOX WBBM, 30 m.
Ministerial Union Program, WPG, 30 m.
Violin, Piano, WOR, 30 m.
Frank Wilson, tenor, WGN
2.45 P.M. EST; 1.45 CT
Organ, WSM
Frank Benn's Orchestra, WFLA
Football, National League playoff, WGN, 2 h., 30 m.
3 P.M. EST; 2 CT
Dramatic Sketch, WFAF WEEI WGY WSM, 30 m.
Tampa University program, WFLA, 30 m.
New York Philharmonic Symphony Orchestra, Bruno Walter, conductor, Gluck's "Orpheus and Eurydice," Maria Olszewska, Grete Stueckgold, WABC WCAU WHAS KMOX WBBM, 2 h. (WPG, 4.30-5)
Gospel Message in Song, WPG
Current Events, WOR
Cathedral of the Underworld, WMCA, 1 h.
3.15 P.M. EST; 2.15 CT
The Amateurs, WOR, 30 m.
3.30 P.M. EST; 2.30 CT
Don Mario, tenor, Harry Jackson's Orchestra, WFAF WEEI WGY WLW, 30 m.
Vespers, Dr. Ralph W. Sockman, WJZ WBZ WHAM WSM WFLA WGAR, 30 min.
Vespers, Shadyside Church, KDKA, 30 m.
3.45 P.M. EST; 2.45 CT
Golden Songbirds, WOR
4 P.M. EST; 3 CT
De Wolf Hopper, Kansas City Philharmonic members, WFAF WEEI WGY WSM WFLA, 30 m.
Sherlock Holmes' Adventures, drama, WJZ WBZ KDKA WBAL WGAR, 30 m.
Rev. Charles E. Coughlin, WOR WLW, 1 h.
Brooklyn Symphony Orchestra, WMCA WIP, 1 h.
4.15 P.M. EST; 3.15 CT
Musical program, WHAM
4.30 P.M. EST; 3.30 CT
Harry Reser's Orchestra, Ray Heatherton, Peg La Centra, vocalists, WFAF WEEI WGY WFLA
"The Land of Beginning Again," WJZ WBZ WHAM KDKA WBAL WGAR, 30 m.
"House by Side of Road," WSM, 30 m.
4.45 P.M. EST; 3.45 CT
Drama, Arthur Allen, Parker Fennelly, WFAF WEEI WGY
Love Lyrics, WFLA
5 P.M. EST; 4 CT
Josef Koestner's Orchestra, Charles Sears, tenor, Mary Steele, contralto, WFAF WEEI WGY WSM, 30 m.
"Roses and Drums," "Crossroads," WJZ WBZ WHAM KDKA WLW WGAR, 30 m.
"Open House," Freddy Martin's Orchestra, WABC WHAS KMOX WBBM, 30 m.
Rodney Fitzsimmons, songs, WPG
Gus Steek's Orchestra, WOR
Young People's Church of the Air, WMCA, 1 h.
5.15 P.M. EST; 4.15 CT
Anita Metzger, readings, WPG
Hollywood Gossip, WOR
Arthur Oberg, tenor, WGN
5.30 P.M. EST; 4.30 CT
Tony Wons, Gina Vanna, Ulderico Marcellini's music, WFAF WEEI WGY, 30 m.
Radio Explorers' Club, Dr. Raymond L. Dittmars, WJZ WBZ WHAM KDKA WFLA WGAR
Smilin' Ed McConnell, WLW WSM, 30 m.; (WOR, 15 m.)
Frank Crumit, Julia Sanderson, WABC WCAU WHAS KMOX, 30 m.
Musical Moods, WBBM, 30 m.
Imperial Hawaiians, WPG
Piano, WGN
5.45 P.M. EST; 4.45 CT
Albert Payson Terhune, dog drama, WJZ WBZ WHAM KDKA WGAR
Birthday Club, WFLA

Guest Star



DEL ADAMS, Detroit songstress, was guest star on the CBS-WABC "Open House" program last Sunday. The program is broadcast each Sunday from 5 to 5.30 P. M.

- 6 P. M. EST; 5 CT
Catholic Hour, Mediaevists Choir, WFAF WEEI WGY WSM WFLA, 30 m.
Heart Throbs of the Hills, WJZ WGAR
Weather, WBZ
Tea Time Melodies, WHAM
Those Three Girls, KDKA
Rene and his Violin, WLW
"Music By Gershwin," "An American in Paris"; "Someone to Watch Over Me," WABC WHAS KMOX WBBM, 30 m.
Band, WPG, 30 m.
Choir Invisible, WOR, 30 m.
Radio Party, WMCA, 30 m.
Dance tunes, WGN, 30 m.
6.15 P.M. EST; 5.15 CT
Jolly Coburn's Orchestra, soloists, WJZ WBZ WHAM KDKA WBAL WGAR
String Trio, WLW
6.30 P.M. EST; 5.30 CT
Frank Simon's Band, Bennett Chapple, WFAF WGY WLW, 30 m.
Salute, WEEI
Grand Hotel, Anne Seymour, "Little Ireland," WJZ WBZ WHAM KDKA WBAL WGAR, 30 m.
Sacred Quartet, WSM, 30 m.
Heart Strings, WFLA, 30 m.
Smiling Ed McConnell, WABC WCAU WHAS KMOX WBBM
Crusade Gospel Singers, WPG
Gabriel Heater, news commentator, WOR
Cocktails, WMCA WIP, 30 m.
Wayne King's Jan Garber's music, WGN, 1 h.
7.15 P.M. EST; 6.15 CT
John B. Kennedy, WFAF WGY
Current Jewish events, WMCA
7.30 P.M. EST; 6.30 CT
Sigurd Nilssen, basso, Graham McNamee, Queena Mario, WFAF WGY
Garden talk, WEEI
Joe Penner, Harriet Hilliard, Ozzie Nelson's Orchestra, WJZ WBZ WHAM KDKA WLW WSM WFLA WGAR, 30 m.
Capital University Choir, WABC WCAU KMOX
Organ, WHAS
Concert Hour, WPG, 30 m.
Songsters, WMCA WIP
Bob Becker, dog chat, WGN
7.45 P.M. EST; 6.45 CT
Wendell Hall, WFAF WGY
Mrs. F. D. Roosevelt, "Americans of Tomorrow," WABC WCAU WHAS KMOX WBBM
Corinna Mura, soprano, WOR
Three Little Funsters, WMCA
Book Review, WGN
8 P.M. EST; 7 CT
Opera Guild, Deems Taylor, Wilfred Pelletier's Orchestra, "Aida," WFAF WGY WLW WSM WFLA, 1 h.
Concert, Ruby Newman, Del Castillo, vocal sextet, WEEI, 1 h.
Symphony Concert, Ossip Gabrilowitsch, conductor; Ruggerio Ricci, violinist, WJZ WBZ WHAM KDKA WGAR, 1 h.
Detroit Symphony Orchestra, Victor Kolar, conducting, WABC WHAS KMOX WBBM, 1 h.
Jean Goldkette's Orchestra, WOR, 30 m.
Robert Haring "presents," WMCA, 1 h.
Ensemble, WGN
8.15 P.M. EST; 7.15 CT
Dance tunes, WGN
8.30 P.M. EST; 7.30 CT
Spanish Revue, WOR, 30 m.
Bridge Talk, WGN

- 8.45 P.M. EST; 7.45 CT
Fur Trappers, WCAU
Ensemble, WGN
9 P.M. EST; 8 CT
Rachel Carley, Jerome Mann, Andy Sanella's music, male trio, WFAF WGY, 30 m.
Sunday Night Party, Roland Winters, Buddy Clark, Rakov's music, WEEI, 30 m.
Charles Previn's Orchestra, Olga Albani, WJZ WBZ WHAM KDKA WBAL WLW WSM WFLA WGAR, 30 m.
Alexander Woollcott, Town Crier; Robert Armbruster's music, WABC WHAS KMOX WBBM, 30 m.
"Housewarming," WOR, 30 m.
"English Coronets," WMCA, 30 m.
Concert orchestra, WGN, 30 m.
9.15 P.M. EST; 8.15 CT
Around the Console, WPG
9.30 P.M. EST; 8.30 CT
American Album of Familiar Music, Ohman and Arden, Frank Munn, Virginia Rea, Gustave Haenschen's Concert Orchestra, WFAF WEEI WGY WSM WFLA, 30 m.
Walter Winchell, WJZ WBZ WHAM KDKA WLW WGAR
Stoopnagle and Budd, Oscar Bradley's Orchestra, WABC WCAU WHAS, 30 m.
Edgewater Beach Orchestra, WBBM, 30 m.
Concert Orchestra, WPG, 30 m.
"Vignettes," WOR, 30 m.
Carols of All Nations, WMCA, 30 m.
Sunday Evening Club, WGN, 30 m.
9.45 P.M. EST; 8.45 CT
Armand Girard, bass, WJZ WBZ WHAM
Unbroken Melodies, WLW
10 P.M. EST; 9 CT
Hall of Fame, Giovanni Martinelli, Metropolitan Opera tenor, WFAF WEEI WGY WLW WSM, 30 m.
L'Heure Exquise, WJZ WBZ WFLA, 30 m. (WHAM KDKA, 15 m.)
Wayne King's Orchestra, WABC WCAU WHAS KMOX WBBM, 30 m.
Harold Stephens, tenor, WPG
Noy Gorodinsky's Orchestra, WOR, 30 m.
Hockey Game, New York Americans vs. Montreal Canadiens, WMCA, 45 m.
Tomorrow's Tribune, WGN
10.15 P.M. EST; 9.15 CT
County Medical Society, WHAM
Y. M. C. A. Talk, KDKA
Hawaiian Dreams, WPG
Concert Orchestra, WGN
10.30 P.M. EST; 9.30 CT
Jane Froman, Modern Choir, Frank Black's Concert Dance Orchestra, WFAF WEEI WGY WSM WLW WFLA, 30 m.
An American Fireside, Abbey Theatre Players, WJZ WBZ WHAM KDKA, 30 m.
Mel Emerson's Orchestra, WGAR, 30 m.
Dramatic Guild, WABC WCAU WPG, 30 m. (News at 10.55)
Charlie Kent's Singers, WHAS
Operatic Miniatures, WOR, 30 m.
Arthur Sears Henning, WGN
10.45 P.M. EST; 9.45 CT
Voice of Friendship, WHAS
Leon Friedman's Orchestra, WMCA
Hockey, Chicago Blackhawks vs. New York Rangers, WGN, 45 m.
11 P.M. EST; 10 CT
K-7 Spy Story, WFAF WEEI WGY WFLA, 30 m.

- Roxanne Wallace, Al and Lee Reiser, WJZ WHAM KDKA (news, 11.10)
Weather reports, news, WBZ
News, drama, WLW, 30 m.
Ted Rollins' Orchestra, WGAR
Little Jack Little's Orchestra, WABC WCAU WBBM, 30 m.; WHAS KMOX, 15 m.
Weather, Steel Pier Orchestra, WPG, 30 m.
Weather, Current Events, Moonbeams, WOR, 30 m.
Voice of Romance, WMCA
Beth Evans, soprano, WPG
Jimmy Allen's Adventures, WOR
"That Reminds Me," WGN
11.15 P.M. EST; 10.15 CT
Jesse Crawford, organ, WJZ
Musicals, WBZ, 45 m.
Musical program, WHAM
Missionary program, KDKA, 45 m.
Walter Winchell, WSM
Cotton Pickers, Dream Doctor, WHAS, 45 m.
Arturo Valentino's Orchestra, WMCA
11.30 P.M. EST; 10.30 CT
News, Emil Coleman's Orchestra, WFAF WEEI WGY WFLA, 30 m.
Irving Aaronson's Orchestra, WJZ WGAR, 30 m.
Organ recital, WHAM, 30 m.
Joe Chromis' Orchestra, WLW, 30 m.
Sunday Night Serenade, WSM, 30 m.
Leon Belasco's Orchestra, WABC WCAU WPG WBBM, 30 m. (KMOX from 11.45)
Florence Richardson's Orchestra, WOR, 30 m.
Blue Rhythm Band, WMCA, 30 m.
Wayne King's, Jan Garber's, Ted Weems' Orchestra, WGN, 1 h.
12 MIDNIGHT EST; 11 P.M. CT
Will Osborne's Orchestra, WFAF WGY WSM WFLA, 30 m.
Mills Blue Rhythm Band, WJZ WBZ KDKA, 30 m.
Lucky Millinder's Orchestra, WLW, 30 m.
Paul Sabini's Music, WABC WCAU WPG WBBM KMOX
Gray Gordon's Orchestra, WHAS
Felix Ferdinand's Orchestra, WOR, 30 m.
Day's End, WMCA, 30 m.
12.15 A.M. EST; 11.15 P.M. CT
Henry Busse's music, WABC WPG WBBM
12.30 A.M. EST; 11.30 P.M. CT
Don Pedros' Orchestra, WFAF, 30 m.
Stan Myer's music, WJZ WBZ KDKA WSM WFLA, 30 m.
Clyde Lucas' music, WLW, 30 m.
Frank Dailey's music, WABC WHAS WBBM KMOX, 30 m.
Julie Wintz' Orchestra, WOR, 30 m.
The Manhattans' Orchestra, WMCA, 30 m.
Kay Kyser's, Charlie Agnew's, Jan Garber's music, WGN, 1 h.
1 A.M. EST; 12 MIDNIGHT CT
Marko's Carioca Orchestra, WLW, 30 m.
Joe Buck's Orchestra, WMCA, 30 m.

A Playwright's Definition

CARLTON MORSE, the man who writes the radio play "One Man's Family," defines a drama as a story where the heroine throws the villain over. In a melodrama, he says, the heroine throws him over a precipice.

Station Directory

Table with 4 columns: Station, Chain, K.C. Watts, Location. Lists various radio stations across different regions and their power ratings.

CHAINS: NBC, National Broadcasting Company; CBS, Columbia Broadcasting System; YN, Yankee Network; DIX, Dixie Network; ABS, American Broadcasting System; NEN, New England Network; QG, Quality Group.

Radio Lane

By Jimmy J. Leonard

BOSTON at last has an amateur show. Not one for others to pattern by, but it is a step in the right direction. Two weeks ago it was started in WNAC's largest studio, and, because of the interest shown by the listeners, 1200 stormed the station for the privilege of witnessing the broadcast. The second Sunday night program was held in the Plymouth Theatre and played before a packed house.

The audience is certainly treated well, but the poor contestants seem to get the short end of the horn. Isn't it a bit harsh to sound auto horns, bugles and cowbells to make a contestant cease singing?

The American Broadcasting System covered the Notre Dame-Army game for about 10 minutes. Suddenly a loud crash emanated from the loud speakers of the listeners; then came a series of loud curses, and grunts. Silence.

On Monday ABS notified all newspapers that spectators had brutally assaulted the announcers and technician, smashed \$7,000 worth of equipment, but were arrested upon the arrival of the police. Who the spectators were is as much your guess as it is mine. The system professes ignorance as to their reason for the attack.

Many wonder why their section of the country does not broadcast Father COUGHLIN. The Reverend Father's capital is somewhat limited. He must place his radio pins on strategic centers. New England hears his speeches over a direct telephone wire from his pulpit.

That fine announcer, WAYNE HENRY LATHAM, has shifted his position from WBZ to WHDH.

In a West Coast station is a young announcer who has a record program which he considered a dull job until he hit upon a scheme. Before each record is played he holds a one-sided conversation with either LOMBARDO, KING or DUCHIN. The boy is clever and the audience finds his program an air gem. Attention, WMEX! HUM and STRUM have a typical program in Cincinnati.

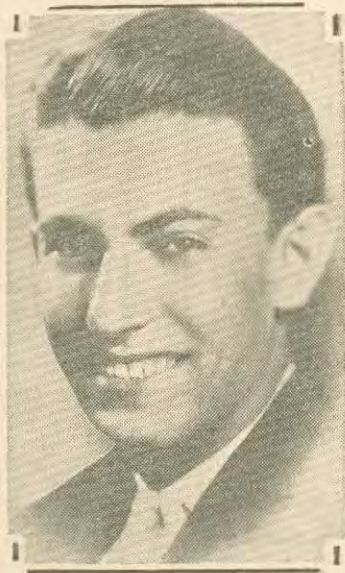
ALLAN E. LIBBY of New Bedford writes in to tell us that he has been on a strange mission for the last three years. He has spent his time roving about the country, listening to dance bands. Mr. LIBBY has judged each band in every possible manner.

After listening to these bands for approximately 531 hours, he has come to the conclusion that MAL HALLETT'S Orchestra is the best dance band in the country. I believe Mr. LIBBY is not to be doubted.

WALTER (WNAC) KIDDER received a pair of knitted "wristers" from a woman, with a note enclosed informing him that the way to a man's heart may be through his stomach, but there is a lot in keeping his wrists warm, too.

JOHN THORBIN, announcer, went from WNAC to WCAU, Philly, this week. KNOX MANNING, announcer of wrestling shows, was pinned in nothing flat when two human mountains crashed through the ropes and landed on his 135-pound frame.

MARK WARNOW still has the first dollar he earned. MYRT and MARGE are becoming trap-shooting experts. A letter addressed to number 77 Columbia Broadcasting System was delivered at once to "Red" GRANGE. Number 77 was GRANGE'S football number. TED HUSING gets letters from a lot of colleges requesting bets, but TED doesn't take any more.



EDDIE DUCHIN

THE ORIGINAL U.S. NEWSPAPER'S MICROPHONE

VOLUME III Saturday, December 8, 1934 NUMBER 49

Publisher, JOHN K. GOWEN, Jr. Business Manager, PHILIP N. HOBSON
Editor, G. CARLETON PEARL Managing Editor, MORRIS HASTINGS
A weekly newspaper, The MICROPHONE is published every Saturday at Boston, Massachusetts, by The MICROPHONE, Inc.

Entered as second class matter August 11, 1933, at the post office at Boston, Massachusetts, under the Act of March 3, 1879.

The MICROPHONE will not be responsible for unsolicited manuscripts unless they are accompanied by return postage.

Subscription for six months, \$1; for one year, \$1.50, postpaid. Single copies, five cents each.

Advertising rates on application to the Business Manager.

Offices, No. 34 Court Square, Boston, Massachusetts.

Telephones (connecting all departments) LAFayette 2860 and 2861.

Curb On Free Speech

THOSE who subscribe to the belief that progress has its inescapable penalties will view with little alarm the rather obvious fact that radio as at present restricted spells the death of oratory. Those who prefer to hear a speaker say something rather than read it will continue to wonder why these restrictions are necessary.

Two present limitations turn brilliant orators into stumbling readers; the fact that a program is on the air for a specified period and the fact that the broadcasting company requires an advance copy of a speech in order to determine whether it contains objectionable material.

There is little difficulty over the first limitation; the experienced speaker can deliver his message in whatever time is specified. The second limitation is the stumbling block.

Few orators are good readers; the fact that they must keep their eyes (eyes that are perhaps none too good and in insufficient light) fixed on typewritten lines, that they must follow the text, destroys spontaneity.

It should be sufficient for public speakers to submit in advance a general outline of their subject and its presentation, and then to deliver the speech over the air in their usual way. Few speakers will so far forget the proprieties as to use objectionable language, and these few may be punished by being cut off the air in the middle of their remarks and banned from the air thereafter.

At almost any public function today, matters pursue their usual and normal course until the proceedings go on the air; immediately they become stilted, hurried, self-conscious.

This is not good for radio, and it should be corrected, promptly.

Radio's greatest usefulness to the public is in making free speech freer, not in acting as a curb upon it.

Radio Now Looks To Europe For Its Stars

By DICK TEMPLETON
New York Correspondent

OVERNIGHT success scored by YVONNE GALL, prima donna of the Paris Opera and Opera Comique, may offer a solution to the problem facing program builders today. Critics who were thrilled by her voice on her first program with PAUL WHITEEMAN wondered why they had not heard her before on radio.

Her plans will cause her to return to Paris in the middle of December, but she has blazed a trail. Already two program-building organizations have shipped scouts to Europe, and more are to follow. They reason that if a glorious voice like La GALL is in Paris, there must be others in England, Germany and Spain.

The problem of "big names" is sinking many a chin these days. Of the comics, only two remain away from the airwaves. One is JACK PEARL, who left radio on the downbeat, and the other is GEORGE BEATTY, a suave comic of the BENNY

type whom no sponsor has yet seen fit to star.

All of the vocalists who can sing a verse and a chorus either have been tried out or signed. Drama is flooding the airwaves with the best actors from stage and screen.

The question now with program builders is "What to do about it?" And they cannot accept the advice in the old popular song of "Let's put out the lights and go to sleep."

Radio is one business in which they cannot sleep. They are going to scour Europe. Few great voices remain in the Metropolitan Opera which have not been hauled before the microphone. Even two-bit comedy teams from vaudeville have been tried out and when not found terrible, signed for this or that.

Only a few great instrumentalists like KREISLER and PADEREWSKI remain away from the microphone, but ALBERT SPALDING did a full year of excellent fiddling. And the instrumentalist never has had the appeal to masses

that the voice, the gag and the drama have had.

Shall the next great voice be a Tyrolean yodler? An English barmaid? A Spanish balladeer? A French RAQUEL MELLER in the making? Much of Europe's great comedy is pantomime and we are yet without television. Radio has proved unmerciful to screen comedians. A few stage comics stay up high, and scores topple. The cruel check-up tells the tale.

What next Europe? You look like the only answer.

Studiosity

By Les Troy

THE LACK of success of the purely educational program as presented on American radio becomes apparent as soon as you listen to one.

I had occasion, recently, to hear a program labeled "Our American Schools." What was attempted on the program, I believe, was to show parents that their co-operation is necessary in helping the child through many problems that come up in school.



COLONEL STOOPNAGLE

This naturally was a large order for the person writing the script, but he (or she) did it well. However, except for some little professional interest, I would have switched to another program. The reason being that the actors and actresses acted and spoke with all the verve, esprit and stage presence (if there can be that on

the radio) of Miss BROWN'S junior Bible Class presenting an allegorical Easter pageant.

Something ought to be done about it. Some of the co-operation the networks have been talking about lately in connection with education on the air ought to become a reality and not just a temporary mouthing for the sake of the Federal Communications Commission.

There are good radio actors. The networks ought to supply these hard-working educators with a few and take away that deadly amateurishness that prevails, at least in the program I heard.

Now, just in case you might think it was someone else writing this column this week, I'll have to tell you a story or two.

Colonel LEMUEL Q. STOOPNAGLE, who recently took to the air again on Sunday evening, has been inventing again. In fact, he has invented so many things that he failed to win the NOBEL prize by the largest vote ever accorded an individual.

Following are some of the better inventions of the good COLONEL.

Eyeglasses with vertical stripes, so bank tellers can recognize their friends on the street. Stepladders without any rungs for washing windows in the cellar. Rugs without any edges, so you don't have to sweep things out from under them.

Spaghetti with holes in it for people who like macaroni.

A radio that gets nothing but static for people who don't like radio, so they can have something really to kick about.

Calendars with only five days in the week to help out the President's recovery plan and a training course for more radio comedians, so more people can listen to symphony concerts.

The good Colonel is also getting out song-titles inspired by books. Some of the gems are "British Agent, Stay Way from My Do'," "I, Governor of California, Here I Come," "Little Women, What Now?" "Lamb in My Bosom, Scat-n-de-scat-n-de-scat."

To Subscribe to The Microphone

Fill out the blank and mail with cash, money order or check to The MICROPHONE, 34 Court Square, Boston, Mass.

(Please print)

Name.....

Street.....

City or Town.....

State.....

(Subscription: \$1 for six months, \$1.50 per year, postpaid)

Monday, December 10 - Reinald Werrenrath, CBS-WABC, 8.30 P.M.

Highlights

P.M.

- 2.00—Revolving Stage, NBC-WEAF
- 3.00—"The Bells," Radio Guild Play, NBC-WJZ
- 8.15—President Franklin D. Roosevelt, ABS-WMCA
- 8.30—Gladys Swarthout, William Daly's Orchestra, NBC-WEAF
- Reinald Werrenrath, CBS-WABC
- 9.00—Frank Parker, NBC-WEAF
- Minstrel Show, NBC-WJZ
- Rosa Ponselle, CBS-WABC
- 9.30—"The Big Show," Gertrude Niesen, CBS-WABC
- Lum and Abner, WOR
- 10.30—Radio Forum, NBC-WEAF
- Dr. Ray Lyman Wilbur, CBS-WABC
- 11.30—St. Louis Symphony Orchestra, NBC-WEAF

(All programs are listed in Eastern Standard Time. Central Time is one hour earlier.)

- 6.45 A.M. EST; 5.45 CT Health Exercises, WEAZ WEEL WGY, 1 h.
- 7 A.M. EST; 6 CT Prayer, WLW
- Musical Clock, WBZ KDKA WGAR, 1 h.
- 7.15 A.M. EST; 6.15 CT Devotions, WLW
- News, WNBX
- 7.30 A.M. EST; 6.30 CT Yoichi Hiraoka, xylophonist, WJZ
- Rise and Shine, WSM, 30 m.
- Breakfast Rhythm, WFLA, 30 m.
- Texas, Harmony trio, WLW
- Organ Revue, WABC, 30 m.
- 7.45 A.M. EST; 6.45 CT Pollock and Lawhurst, WEAZ WEEL
- Musical program, WGY
- Jolly Bill and Jane, WJZ
- Jack Foy, songs, WHAM
- Plantation Days, spirituals, WLW
- Musical Clock, WNBX
- 8 A.M. EST; 7 CT Bradley Kincaid, songs, WEAZ WLW
- Weather, Current Events, WEEL
- Musical Clock, WGY, 30 m.
- Devotions, WJZ WBZ KDKA WFLA
- Kindly Thoughts, WHAM, 30 m.
- Johnny Muskrat, Rise and Shine, WSM, 30 m.
- Song Reporter, WABC, 25 m.
- Devotions, WHAS, 30 m.
- 8.15 A.M. EST; 7.15 CT Don Hall Trio, WEAZ WLW
- William Meeder, organ, WJZ WBAL, 30 m. (WBZ WFLA, 15 m.) (WHAM at 8.30)
- Early Birds, WNBX
- 8.30 A.M. EST; 7.30 CT Cheerio, WEAZ WEEL WGY WLW WSM, WFLA, 28 m.
- Weather, WBZ
- Lyrical Serenade, WABC, 27 m.
- Georgia Wildcats, WHAS
- Organists, WPG, 30 m.
- 8.45 A.M. EST; 7.45 CT Landt Trio and White, songs and comedy, WJZ WBZ WHAM KDKA WBAL
- Bob Atcher, WHAS
- 9 A.M. EST; 8 CT Organ, WEAZ, 30 m.
- Annette McCullough, WGY
- Breakfast Club, The Merry Macs, WJZ WBZ WBAL WGAR, 1 h. (KDKA, 30 m.) (WHAM WSM from 9.30) (WFLA at 9.15)
- Joe Emerson, hymns, WLW
- Devotion, WSM
- Birthday Club, WFLA
- Modern Minstrels, WABC WCAU, 1 h. (WHAS, 9-9.15 and at 9.45) (WPG at 9.30)
- 9.15 A.M. EST; 8.15 CT Deane Moore, songs, WEEL
- Devotions, WGY
- Cooking School, WHAM
- String Music, WLW
- Organ, WSM
- Matinee Melodies, WNBX
- 9.30 A.M. EST; 8.30 CT Eva Taylor, vocalist, WEAZ
- Little Jack Little, WGY
- Styles, KDKA
- Mail Bag, WLW
- 9.45 A.M. EST; 8.45 CT Mattinata, chorus, WEAZ
- News, WEEL
- Musical program, WGY
- Work-a-Day Thoughts, KDKA
- The Jacksons, WLW
- Daily Story, WNBX
- 10 A.M. EST; 9 CT News, Johnny Marvin, tenor, WEAZ WGY WFLA
- Josephine Gibson, Milton Lomask, violinist, WJZ WBZ KDKA WSM WGAR
- Talk, Cancer Control, WHAM
- Elliot Brock, violinist, WLW
- News, Harmonies in Contrast, WABC WCAU
- News, Home Hour, WPG, 1 h.
- Sanders Sisters, WHAS
- World Observer, WNBX
- 10.15 A.M. EST; 9.15 CT Clara, Lu 'n' Em, WEAZ WEEL WGY WLW WTAM WGN WSM WSB
- Holman Sisters, piano duo, WJZ WBZ WHAM
- Sammy Fuller, KDKA
- Morning Topics, WFLA
- Bill and Ginger, WABC WCAU
- Dolly Dean, WHAS
- Town Crier, WNBX
- 10.30 A.M. EST; 9.30 CT Breen and de Rose, Bob Emery, WEAZ
- Bridge talk, WEEL
- Market Basket, WGY
- Live Stocks, news, WLW

A Singer Smiles



CAROL DEIS, NBC soprano, is soloist with orchestras over the radio and also occasionally presents song recitals.

- "Skippy," WABC WCAU
- Capt. Tom's Pirate Ship, WOR
- Popular Tunes, WGN, 30 m.
- 5.30 P.M. EST; 4.30 CT Sizzlers, trio, WEAZ WGY WSM
- Piano Lesson, WEEL
- Singing Lady, Nursery Rhymes, songs, stories WJZ WBZ WHAM KDKA WLW
- Jack Armstrong, WABC WCAU
- Out of the Dusk, WHAS, 30 m.
- Johnny Edwards, songs, WPG
- Sally's Party, WMCA, 30 m.
- 5.45 P.M. EST; 4.45 CT Stamp Club, WEAZ WEEL WGY
- Little Orphan Annie, WJZ WBZ WHAM KDKA WBAL WFLA WGAR
- Jack Armstrong, WLW
- Financial reports, news, WSM
- Betty Barthell, WABC WCAU
- Peg and Mimi, WPG
- Jimmy Allen's Adventures, WOR
- Baritone, WGN
- 6 P.M. EST; 5 CT Xavier Cugat's music, WEAZ
- Evening Tattler, WEEL, 30 m.
- High Priests of Harmony, WGY
- United States Army Band, WJZ, 28 m. (WHAM KDKA at 6.15)
- Adventures of Jimmie Allen, WBZ
- Sports, WHAM
- Dan and Sylvia, KDKA
- Around the world, WLW
- Nap and Dee, WSM
- Antonia Lopez' Orchestra, WFLA, 30 m.
- Buck Rogers, WABC WCAU WHAS
- Og, Son of Fire, WBBM KMOX
- Uncle Don, WOR, 30 m.
- Popular Rhythm, WGN, 30 m.
- Dick Blaine's Orchestra, WMCA
- 6.15 P.M. EST; 5.15 CT "Mysterious Island," WEAZ
- Jimmy Allen's Adventures, WGY
- Ray Jones, WBZ
- Bachelor of Song, WLW
- Sarie and Sallie, WSM
- Bobby Benson, Sunny Jim, WABC WCAU
- Skippy, WHAS WBBM KMOX
- Gene Kardos' Orchestra, WMCA (6.20-6.30)
- 6.30 P.M. EST; 5.30 CT News, Carol Deis, soprano, WEAZ
- Rhythmic Reporter, news, drama, WEEL
- News, WGY
- News, Three X Sisters, WJZ
- News, weather, WBZ
- News, Reveries, WHAM
- Comedy Stars, KDKA
- Bob Newhall, WLW
- Freddie Rose, WSM
- News, melody's garden, WFLA
- "The Shadow," WABC WCAU, 25 m. (news, 6.55)
- Deed-I-Do Club, WHAS
- Jack Armstrong, WBBM KMOX (news, 6.55)
- News commentator, WOR
- Screen Revue, WMCA
- Singing Lady, WGN
- 6.45 P.M. EST; 5.45 CT Billy Batchelor, Raymond Knight, WEAZ
- WEEL WGY WTAM
- Lowell Thomas, WJZ WBZ WHAM KDKA
- WBAL WLW WFLA WGAR
- Little Orphan Annie, WSM WGN
- Woody and Willie, WBBM
- "Cocktail Time," WOR
- Sagebrush Harmonizers, WMCA
- 7 P.M. EST; 6 CT Ray Perkins, WEAZ (WSM at 7.05)
- Studio Chorus, WEEL
- Current Events, WGY
- Amos 'n' Andy, WJZ WBZ WHAM KDKA
- WBAL WLW WFLA WGAR
- Reddy Kilowatt, WSM
- Myrt and Marge, WABC
- Weather, Cross Roads, WHAS, 30 m.
- Ford Frick, sports, WOR
- Gloria Grafton, songs, WMCA
- Jimmy Allen, WGN KMOX
- 7.15 P.M. EST; 6.15 CT Plantation Echoes, Willard Robison's music,
- WJZ WBZ WHAM KDKA WBAL WSM
- Lum and Abner, WLW
- Just Plain Bill, WABC WCAU
- Dan Russo's music, WBBM
- Comedy Stars of Hollywood, WOR
- A. M. Sullivan, poet, WMCA
- Ensemble, WGN
- 7.30 P.M. EST; 6.30 CT Minstrel Show, Al Bernard and Paul Dumont, Wallace Butterworth, WEAZ WGY
- After Dinner Revue, WEEL
- Red Davis, sketch, WJZ WBZ WHAM KDKA WLW WSM WFLA
- Paul Keast, Rollo Hudson's Orchestra, WABC WCAU
- Buck Rogers, WHAS KMOX WBBM
- "Mystery Sketches," WOR
- Jan. Jude and Jerry, WMCA
- Dance Orchestra, WGN
- 7.45 P.M. EST; 6.45 CT Uncle Ezra, WEAZ WEEL WGY
- Dangerous Paradise, sketch, WJZ WBZ WHAM KDKA WLW WSM WGAR
- Melody Man, WFLA
- Boake Carter, WABC WCAU WHAS KMOX
- WBBM
- Dance music, WOR
- George Reid, WMCA
- Amateur Night, WGN
- 8 P.M. EST; 7 CT Richard Himber's Orchestra, Joey Nash, tenor, WEAZ WEEL WGY WTAM, 30 m.
- Jan Garber's Orchestra, Dorothy Page, contralto, Bob White, WJZ WBZ WHAM KDKA WLW WGAR, 30 m.
- Friendly Four, WSM
- WFLA Players, WFLA, 30 m.
- Carson Robinson's Buckaroos, WABC WCAU WHAS WBBM KMOX
- Irish Melodies, WPG
- Lone Rangers, WOR WGN, 30 m.
- Three Little Funsters, WMCA
- 8.15 P.M. EST; 7.15 CT Lasses and Honey, WSM
- Edwin C. Hill, WABC WHAS KMOX
- WBBM
- Manhattan Moods, WPG
- Pres. F. D. Roosevelt, WMCA
- 8.30 P.M. EST; 7.30 CT William Daly's Orchestra, Gladys Swarthout, WEAZ WEEL WGY WLW WSM WFLA WTAM, 30 m.
- Carefree Carnival, WJZ WBZ WHAM KDKA, 30 m.
- Reinald Werrenrath, baritone, Josef Paster-nack's Orchestra, WABC WCAU WHAS KMOX WBBM, 30 m.
- Night School of Dramatic Art, WPG
- Golden Dawn Revue, WOR, 30 m.
- Comedy Team, WMCA
- Kay Kyser's Orchestra, WGN
- 8.45 P.M. EST; 7.45 CT The Cameos, WPG
- Kay Thompson, Rhythm Boys, WMCA
- Northwestern University program, WGN
- 9 P.M. EST; 8 CT Frank Parker, tenor, Harry Horlick's Music, WEAZ WEEL WGY WTAM, 30 m.

Educational

Tuesday, December 11

- 7.30 P.M.—You and Your Government: "Enforcing Tax Collections," Philip A. Benson, President, Dime Savings Bank, Brooklyn, N. Y. Russell McInnes, Government Bond Department, Lehman Brothers, New York, NBC-WEAF
- 10.00 P.M.—"Industries' Problems," Alfred P. Sloan, president, General Motors Corporation, NBC-WJZ

Thursday, December 13

- 12.30 P.M.—"Wood to Burn," C. M. Austin, Manager, Montgomery County Farm Bureau.
- "There Ought to Be Another Law About Food," Dr. A. H. Robertson, Director, State Food Laboratory, New York State Department of Agriculture and Markets, WGY
- Minstrels, Gene Arnold, Joe Parsons, Ranch Boys, Mac McCloud, WJZ WBZ WHAM KDKA WLW WFLA, 30 m.
- U. of Maryland program, WSM, 30 m.
- Rosa Ponselle, "Queen of the Night," "Angels' Serenade," "Heine," Andre Kostelanetz' music, WABC WCAU WPG
- WHAS KMOX WBBM, 30 m.
- "The Witch's Tale," WOR, 30 m.
- Play, "Murder Misdirected," WMCA, 30 m.
- Dance orchestra, Dorothy Miller, WGN

- 9.15 P.M. EST; 8.15 CT Comedy Stars, WGN
- 9.30 P.M. EST; 8.30 CT House Party, WEAZ WEEL WGY WLW WTAM WSM WSB WFLA, 30 m.
- Drama, Douglas Hope, Joan Blaine, WJZ WBZ WHAM KDKA WGAR, 30 m.
- "The Big Show," Gertrude Niesen, Lud Gluskin's Orchestra, WABC WCAU WHAS KMOX WBBM, 30 m.
- Concert orchestra, WPG, 30 m.
- Lum and Abner, WOR WGN
- "Moods in Melody," WMCA, 30 m.
- 9.45 P.M. EST; 8.45 CT Earl Burnett's Orchestra, WOR WGN
- 10 P.M. EST; 9 CT Lullaby Lady, quartet, Morgan L. Eastman's Orchestra, WEAZ WEEL WGY WLW WSM, 30 m.
- Courtland Manning, WHAM
- Al and Pete, KDKA
- Wayne King's Orchestra, WABC WCAU WHAS KMOX WBBM, 30 m.
- Organ Recital, WPG, 30 m.
- Sid Gary, baritone, WGY
- Scott Fisher's Orchestra, WMCA, 30 m.
- Tomorrow's Tribune, WGN
- 10.15 P.M. EST; 9.15 CT Jan Carlson's Orchestra, WHAM
- News commentator, WOR
- Berenice Taylor, concert orchestra, WGN, 30 m.
- 10.30 P.M. EST; 9.30 CT Radio Forum, Frank R. McNinch, WEAZ
- WGY WSM WFLA, 30 m.
- Sammy Lerner's Orchestra, WBZ, 30 m.
- Silvertoppers, KDKA
- Corn Cob Pipe Club, WLW, 30 m.
- Dr. Ray Lyman Wilbur, "Dollars, Doctors and Disease," WABC WCAU WPG
- WHAS KMOX WJVS WBT
- In the Spotlight, WOR, 30 m.
- Jerry Freeman's Orchestra, WMCA, 30 m.
- 10.45 P.M. EST; 9.45 CT The American Family, WEEL
- Moments of Melody, KDKA, 30 m.
- Emery Deutsch, WABC WCAU WPG
- WHAS KMOX WJVS WBT
- Ted Weems' Orchestra, WGN
- 11 P.M. EST; 10 CT "The Grumitts," WEAZ
- Weather, Current Events, WEEL
- Debate—Union vs. Middlebury, WGY, 1 h.
- Emil Coleman's music, WJZ WGAR, 30 m.
- Weather, WBZ
- Tommy Tucker's Orchestra, WHAM, 30 m.
- News, Roamios, WLW, 30 m.
- Amos 'n' Andy, WSM
- Florida Jubilee, WFLA, 30 m.
- Glen Gray's music, WABC WCAU WPG, 30 m. (WPG, weather)
- Myrt and Marge, WBBM KMOX WHAS
- Weather, Current Events, WOR
- Voice of Romance, WMCA
- "Here, There and Everywhere," WGN
- 11.15 P.M. EST; 10.15 CT Jesse Crawford, organist, WEAZ WEEL WSM
- Frolic, WBZ
- Orchestra, KDKA, 30 m.
- Henry Busse's Orchestra, WBBM
- Weather, studio program, WHAS
- Sleepy Hall's Orchestra, WMCA
- Moonbeams, WOR
- Dream Ship, WGN
- 11.30 P.M. EST; 10.30 CT St. Louis Symphony Orchestra, Vladimir Golschmann, conductor, WEAZ WEEL, 1 h.
- Jolly Coburn's music, WJZ WBZ WHAM WFLA, 30 m. (KDKA at 11.45)
- Stan Stanley's Orchestra, WLW, 30 m.
- Francis Craig's Orchestra, WSM, 30 m.
- Jack Miller's Orchestra, WABC WPG
- WBBM, 30 m. (KMOX at 11.45)
- Dream Doctor, WHAS, 30 m.
- Anthony Trini's Orchestra, WOR, 30 m.
- Blue Rhythm Band, WMCA, 30 m.
- Kay Kyser's, Earl Burnett's Ted Weems' music, WGN, 1 h.
- 12 MIDNIGHT EST; 11 P.M. CT Henry King's music, WJZ WBZ KDKA
- WBAL WLW WSM WFLA, 30 m.
- Scott Fisher's Orchestra, WABC WCAU WPG
- WHAS KMOX WBBM, 30 m.
- Julie Wintz's Orchestra, WOR, 30 m.

STATION DIRECTORY

Page 4

Rosa Ponselle, Metropolitan Star, Denies She Is Temperamental

Singer Was Discovered By Caruso

By DEBORAH DeCAMP

ROSA PONSELLE is one diva who does not believe in temperament.

When she came to the Columbia Broadcasting System to sing in her series of programs, everyone expected temperament.

For all great artists are temperamental.

Miss PONSELLE even admitted that she was. Or had been called so. But—

"When a prima donna objects to anyone smoking in her presence, she is accused of being temperamental," says Miss PONSELLE.

"If she insists upon the most quiet and comfortable room in a hotel and refuses one after another until she finds it; if she orders food not on the menu and prepared in special ways, she is temperamental.

"Objections to drafts and insistence upon the proper ventilation of her dressing room, and of the auditorium; or being particular about the lighting of the stage and concert hall; these and similar demands are often supposed to be mere personal idiosyncrasies—the artistic temperament.

"But are they?"

A Singer's Lot

"To a large extent, singing is physical work.

"Not only must a singer's voice be in perfect condition—but a singer must be mentally fit for the work.

"To sing a song with all you have in you—the only way a song should be sung—requires concentration upon every detail, technical, as well as artistic and psychological.

"What is thought to be temperament is in reality an artist's tempering of life to his or her requirements."

ROSA PONSELLE not only has this concentration that is so important a part of a singer's equipment, she has unceasing enthusiasm for her work.

An Innovation

When she first came to Columbia, she created a radio innovation.

She invited ANDRE KOSTELANETZ, NINO MARTINI, GRETE STUECKGOLD and other artists on the program to a tea-conference.

They were to discuss ways of making the program just as good as it could be made by these people who are at the head of their professions.

And the tea-conference was not to be a single meeting—it has been a frequent occurrence.

To be a prima donna of the Metropolitan Opera; to be heralded as the possessor of a voice of rare quality and as a talented actress besides; to be all this while still young, should be enough to satisfy the dreams of any artist.

But it isn't enough for ROSA PONSELLE.

When she sings with the ANDRE KOSTELANETZ Orchestra at 9 on Monday evenings, she is singing with just as much enthusiasm as when her voice comes from the stage of the Metropolitan.

"Her Triumph Made Musical History"



ROSA PONSELLE, distinguished soprano of the Metropolitan Opera Company, is soloist with ANDRE KOSTELANETZ' orchestra Monday evenings at 9 over the CBS-WABC network.

She does not need the trappings of opera, the impressive background, nor the applause. She loves to sing, and she loves

to sing to every individual who hears her.

This same enthusiasm for her work has been with Miss PONSELLE ever since she began to sing in a church choir at the age of five.

Her mother had been a choir singer, too, and a talented one, although she never embarked on a professional career.

But she had the understanding and the knowledge to urge her gifted daughter to make every effort to develop her voice.

Her heritage of generations of music lovers added to the force that has made Miss PONSELLE the outstanding artist that she is today.

Although born in Meriden, Connecticut, her parents and all her ancestors were Italian.

And Italy and music are synonymous.

Sings in Nickelodeon

When she was a little over 14 she got her first job singing illustrated songs in a nickelodeon in Meriden.

From that moment, step by step, talent and hard work brought her, in a brief span of time, to the stage of the Metropolitan.

From the nickelodeon she went to a New Haven cabaret. A discerning theatrical manager heard her there, and before long she

Once Was Soloist In Nickelodeon

was singing in vaudeville.

It was at about this time that the late ENRICO CARUSO heard ROSA PONSELLE.

He was immediately impressed with her remarkable voice and it was he who urged her to prepare for an operatic career.

Later he arranged an audition for her at the Metropolitan.

It was not six months after she stopped singing in vaudeville that she stepped onto the stage of the Metropolitan Opera House, on November 15, 1918, and sang the leading role in "La Forza del Destino" opposite CARUSO.

There was no fanfare to announce her coming. She was not famous then.

She was known only to those on the inside.

But ROSA PONSELLE sang, and her triumph made musical history.

Opera Not Enough

Opera was not enough for Miss PONSELLE.

She was just as eager to make concert appearances as she was to sing the leading roles that were always her lot at the Metropolitan.

"There are advantages in each field," she says.

"In opera, the audience is kept in the background.

"Instead of having a close contact with the people out front, and being permitted to read some of the faces and get their reactions as the performance proceeds, I withdraw completely into my role and the dramatic business at hand.

"But I miss something I love so much in concert work—that privilege of gazing into the thousands of eyes before me; of recognizing now and then a face I remember having caught a glimpse of on the city streets, in the hotel lobby, or at a previous concert."

Japan Reception Possible

(Continued from Page 3)

East to tune-in on. This is sandwiched between really enjoyable musical programs and up-to-date news flashes. Weather conditions must be favorable for a pick-up here, but such occasions have been fairly frequent during the past weeks.

Reception usually is at its best, which means clear but probably none too loud, between approximately 3 and 7 A. M. Before 3 A. M., it is a little early in the evening at Khabarovsk for suitable wave propagation; after 7 or 8 A. M., EST, the sun shines a bit too brightly here.

Another trans-Pacific short waver found on the morning 491 meter band at times is Station YDA, Soerbaia, Java, south of Siberia in the tropics. This one, too, is audible only when weather conditions permit, but it offers some strange reception to fans who do bring it through.

Five to 8 A. M. is, as a rule, the best time to search for the programs of YDA. The exact wave spot is 49.67 meters, 6.04 megs. Volume averages about "fair"; an-

nouncements are in Dutch and a local tongue.

The Javanese short wave transmitter is the most powerful of about 20 scattered throughout the East Indies. All are owned by a Dutch company attempting to commercialize on the hook-up. Broadcast band reception in the islands is practically impossible due to the severe static and atmospheric disturbances.

The Japanese high frequency outlets still are hopping around the dial, not remaining long enough in one spot to become popular or dependable. JVT, Nasaki, on 44.44 meters (6.75 megs.) may be found etherizing the Japanese national programs some mornings around 5 or 6 o'clock. JVM, the 27-meter outlet heard frequently in the Summer, is operating irregularly now.

All the "JV" Nippon transmitters are located at Nasaki, Ibarakiken. Reception reports and communications of other similar nature should be addressed: "Kokusai-Denwa Kaisha, Ltd., Osaka Building, Kojimachiku, Tokio, Japan."

For Southern Listeners

The programs of WFAF or WJZ may be heard over:

- WAPI Birmingham, Ala.
- WFLA-WSUN Clearwater, Florida
- WIOD Miami, Fla.
- WJAX Jacksonville, Fla.
- WJB Atlanta, Georgia
- WSMB New Orleans, La.
- WOAI San Antonio, Tex.
- WSM Nashville, Tenn.

The programs of WABC may be heard over:

- WBRC Birmingham, Ala.
- WDAE Tampa, Fla.
- WQAM Miami, Florida
- WJSV Washington, D. C.
- WBT Charlotte, N. C.
- WTAR Norfolk, Va.
- WTOC Savannah, Ga.
- WBIG Greensboro, N. C.

Middle Western Listeners

The programs of WFAF may be heard over:

- KSD St. Louis, Mo.
- KYW Chicago, Ill.
- WMAQ Chicago, Ill.
- WTAM Cleveland, Ohio

The programs of WJZ may be heard over:

- WENR-WLS Chicago, Ill.
- WGAR Cleveland, Ohio
- WJR Detroit, Mich.

The programs of WABC may be heard over:

- WBBM Chicago, Ill.
- WHK Cleveland, Ohio
- WCCO Minneapolis, Minn.
- KMOX St. Louis, Mo.
- WHAS Louisville, Ky.

NOTE: Outstanding local programs of these stations are regularly listed in The MICROPHONE.

Tuesday, December 11 - Alfred P. Sloan Speaks, NBC-WJZ, 10 P.M.

Highlights

- P.M.**
- 1.30—Music Guild, Frank Black, director, NBC-WEAF
 - 6.30—Howard Barlow, "Understanding Music," CBS-WABC
 - 8.00—Murder Mystery, NBC-WJZ
"Lavender and Old Lace," CBS-WABC
 - 8.30—Lawrence Tibbett, NBC-WJZ
 - 9.00—Ben Bernie's Orchestra, NBC-WEAF
 - Bing Crosby, Boswell Sisters, CBS-WABC
 - 9.30—Ed Wynn, NBC-WEAF
Isham Jones' Orchestra, CBS-WABC
 - 10.00—Glen Gray's Orchestra, Annette Hanshaw, CBS-WABC
 - Alfred P. Sloan, NBC-WJZ

(All programs are listed in Eastern Standard Time. Central Time is one hour earlier.)

- 9 A.M. EST; 8 CT**
Organ, WEAFF WGY, 30 m.
Breakfast Club, Jack Owens, tenor, Songfellows, WJZ WBZ, 1 h. (KDKA, 30 m.) (WSM at 9.30) (WHAM, 9.15-9.40) (WFLA at 9.15)
Hymns, WLW
Devotions, WSM
Birthday Club, WFLA
Happy Days, WABC WCAU, 1 h. (WPG at 9.30)
- 9.15 A.M. EST; 8.15 CT**
Deane Moore, WEEI
Organ, WSM
String music, WLW
Matinee Melodies, WNBX
- 9.30 A.M. EST; 8.30 CT**
Eva Taylor, songs, WEAFF
Little Jack Little, WGY
Styles, KDKA
Talk, organ, WLW
Bob Archer, WHAS
- 9.45 A.M. EST; 8.45 CT**
Allen Prescott, WEAFF
News, WEEI
Household Hour, WHAM, 30 m.
Plough Boys, KDKA
The Jacksons, WLW
Daily Story, WNBX
- 10 A.M. EST; 9 CT**
Musical program, WGY
News, Johnny Marvin, tenor, WEAFF WGY (WEEI, 10.35-11)
Rhythm Jesters, WLW (Home Loan talk, 10.10)
News, Music Masters, WABC WCAU
News, Home Hour, WPG, 1 h.
Devotions, WNBX
- 10.15 A.M. EST; 9.15 CT**
Clara, Lu 'n' Em, WEAFF WEEI WGY WLW WSM WGN
Edward MacHugh, WJZ WBZ WHAM KDKA
Fashion talk, WFLA
Bill and Ginger, WABC WCAU
Sanders Sisters, WHAS
Poet's Corner, WMCA
Town Crier, WNBX
- 10.30 A.M. EST; 9.30 CT**
Morning Parade, WEAFF, 45 m. (WFLA, 10.45-11) (WSM, 15 m.) (WGY, 15 m. from 10.45)
Market Basket, WGY
Today's Children, WJZ WBZ KDKA WFLA
Livestock, news, WLW
Laugh Clinic, WABC WCAU WHAS, 30 m.
Organ Logs, WNBX
- 10.45 A.M. EST; 9.45 CT**
News, Radio Kitchen, WJZ KDKA WSM
News, musicale, highway safety talk, WBZ
News, organ recital, WHAM, 30 m.
Jack Berch's music, WLW
News, WNBX
- 11 A.M. EST; 10 CT**
Friendly Kitchen program, WEEI
Galaxy of Stars, WGY WTAM WLW
Honeymooners, WJZ KDKA WSM WFLA
Curley Joe, WBZ
Madison Ensemble, WABC WPG
Milky Way, WBBM KMOX WHAS
Parents' Forum, WNBX
- 11.15 A.M. EST; 10.15 CT**
"Your Child," Miss Ella Gardner, WEAFF WEEI WGY WFLA
Tony Wons, WJZ WBZ WHAM KDKA
Yucatan Trio, WLW
String music, WSM
Alex Semmler, piano, WABC WPG
Dr. Charles Turck, WHAS
Sporting News, WNBX
- 11.30 A.M. EST; 10.30 CT**
Three Shades of Blue, WEAFF WGY
Organ, WEEI
Marine Band, Shut-In Hour, WJZ WSM, 1 h. (KDKA, 55 m.) (WBZ WLW WFLA, 30 m.) (WHAM, weather, 12.25)
Dream Doctor, WHAS
Variety program, WNBX
- 11.45 A.M. EST; 10.45 CT**
Words and Music, WEAFF WEEI WGY WEEI, news at 11.35)
Ken Tucker, WHAS
Smilin' Ed McConnell, WNBX
- 12 NOON EST; 11 A.M. CT**
Joyce Allmand, contralto, WEAFF WEEI
Soloist, WGY
Weather, Monitor Views News, WBZ, 30 m.
Salt and Peanuts; market reports, WLW
Noonday Varieties, WFLA
Voice of Experience, WABC WCAU WHAS WBBM KMOX
Home Sweet Home, WPG
Current Events, WOR
Bob Fallon's Orchestra, WMCA, 30 m.
Houston Goodies, WGN
Studio Orchestra, WNBX
- 12.15 P.M. EST; 11.15 A.M. CT**
Honeyboy and Sassafras, WEAFF WEEI
Vagabonds, WGY
Weather, WHAM (12.25)
Livestocks, WLW

- The Gumps, WABC WCAU WHAS WBBM KMOX
Orientale, WPG
Organ, WOR
Bernice Taylor, soprano, WGN
- 12.30 P.M. EST; 11.30 A.M. CT**
Merry Madcaps, WEAFF, 30 m.
Stocks, produce markets, WEEI
Farm program, WGY, 30 m.
National Farm and Home Hour, WJZ WBZ KDKA WLW WSM WFLA, 1 h.
WHAM, talk, 12.55-1.30
Talk and Arthur Warren's Orchestra, WABC WCAU, 30 m. (WPG at 12.45)
University of Louisville, WHAS
Markets, Good Health and Training, WGN
Dance Orchestra, WOR, 30 m.
Betty Jayne, songs, WMCA
Studio Pals, WNBX
- 12.45 P.M. EST; 11.45 A.M. CT**
Caroline Cabot, Del Castillo, WEEI, 30 m.
Will Hollander's Orchestra, WMCA, 30 m.
University of Kentucky, WHAS
Banking Program, WNBX
- 1 P.M. EST; 12 NOON CT**
Markets, weather, WEAFF
George Hall's Orchestra, WABC WCAU WPG, 30 m.
Agricultural College, WHAS
Just Plain Bill, KMOX
Health talk, Dance tunes, WOR, 30 m.
Just Plain Bill, WGN
- 1.15 P.M. EST; 12.15 CT**
Rex Battle Concert Ensemble, WEAFF WEEI
The Southerners, WGY
Gossip Club, WBBM WHAS KMOX
Eddie Prior's Orchestra, WMCA, 30 m.
Piano, WGN
- 1.30 P.M. EST; 12.30 CT**
Music Guild, Frank Black, director, WEAFF, 1 h. (WEEI at 1.45 and 2.15) (WGY WFLA, 30 m.) (WSM at 1.45)
Health Review, WEEI
Vic and Sade, WJZ WBZ WLW WFLA
William Penn Orchestra, KDKA
Rochester School of the Air, WHAM
Markets, WSM
Stage Relief Speaker, WABC
Esther Velas' Ensemble, WCAU KMOX (WABC at 1.35) (WPG, 15 m.)
Theatre Club of the Air, WOR
- 1.45 P.M. EST; 12.45 CT**
Ranch Boys, WJZ WHAM KDKA
New England Agriculture, WBZ
Stan Stanley's Orchestra, WLW
Pat Kennedy, Art Kassel's music, WABC WBBM
- The Watermark Twins, WPG
Studio Orchestra, WOR
Ragamuffins, WMCA
- 2 P.M. EST; 1 CT**
Pure Food Institute, WEEI
Health Hunters, WGY
Crosscuts from Log of Day, Live Mocking Birds, WJZ WBZ WHAM KDKA WFLA, 30 m.
Marie, the Little French Princess, WABC WCAU WBBM KMOX
Trio, WPG, 30 m.
University of Kentucky, WHAS, 30 m.
Dr. Arthur Frank Payne, WOR
Dorothy Atkins, songs, WMCA
Just Plain Bill, WGN
- 2.15 P.M. EST; 1.15 CT**
Household Chat, WGY
Helen Trent's Romance, WABC WCAU WGN KMOX
"Memories," Fred Vetta, Alice Remsen, WOR
Stephen Barry, songs, WMCA WIP
- 2.30 P.M. EST; 1.30 CT**
Peerless Trio, WEAFF WEEI WGY WFLA
Home Sweet Home, WJZ
Home Forum Cooking School, WBZ, 30 m.
Smackout, WHAM WSM
KDKA Home Forum, KDKA, 30 m.
School of the Air, WABC WPG WHAS WBBM KMOX, 30 m.
Martha Deane, WOR, 30 m.
Jongleurs, WGN
Roads of Romance, WMCA, 30 m.
- 2.45 P.M. EST; 1.45 CT**
Vic and Sade, WEAFF WEEI WGY
Nellie Revell interviews Mary McCoy, WJZ WHAM WSM WFLA
Mark Love, basso, WGN
- 3 P.M. EST; 2 CT**
Ma Perkins, WEAFF WEEI WGY WLW WSM WTAM
Art Collins' Orchestra, WJZ WHAM WFLA 30 m. (WLW at 3.15)
ERA Civic Orchestra, WBZ, 30 m.
Sammy Fuller, KDKA
Variety Hour, WABC WPG WCAU WPG, 1 h. (KMOX from 3.30)
MacDowell Club of Lexington, WHAS
Afternoon Musical Review, WOR
Charlotte Buchwald, WMCA
Ensemble, WGN
Afternoon Concert, WNBX
- 3.15 P.M. EST; 2.15 CT**
Morin Sisters, WEAFF WEEI WSM
WGY Matinee Players, WGY

Man About Town



PHIL DUEY, vocalist, is a member of the "Men About Town" quartet. He also is soloist with LEO REISMAN'S Orchestra on the NBC-WEAF network Tuesdays at 8 P. M.

- Congress of Clubs, KDKA
Sylvia Clyde, soprano, WOR
Crane Calder, baritone, WMCA
Jongleurs, WGN
Gladys Grant, WNBX
- 3.30 P.M. EST; 2.30 CT**
Woman's Radio Review, Joseph Littau's Orchestra, WEAFF WEEI WGY, 30 m.
Music Magic, Joan Blaine, WJZ WBZ WHAM KDKA WSM WFLA, 30 m.
"Song of the City," WLW
Show Boat Boys, WOR, 30 m.
Sports Review, concert artists, WMCA, 1 h., 30 m.
Home Management talk, WGN
- 3.45 P.M. EST; 2.45 CT**
Business News, WLW
Afternoon Musicale, WGN, 30 m.
Mrs. Griggs, WNBX
- 4 P.M. EST; 3 CT**
Chick Webb's Orchestra, WEAFF WSM, 30 m. (WGY at 4.15)
Stocks, WEEI
Betty and Bob, drama, WGY WJZ WBZ WHAM KDKA
Life of Mary Sothorn, WLW
Homemakers' Club, WFLA, 30 m.
Visiting America's Little House, John Erskine, WABC WPG WHAS
Silver Strains, WOR
Windsor program, WNBX
- 4.15 P.M. EST; 3.15 CT**
Music Club program, WEEI
Eddie East, Ralph Dumke, songs and comedy, WJZ WBZ WHAM KDKA
Betty and Bob, WLW
Poetic Strings, WABC WPG WBBM
Week-day Devotions, WHAS
Leo Freudberg's Orchestra, WOR
Joseph Hassmer, baritone, WGN
- 4.30 P.M. EST; 3.30 CT**
Jesters, trio, WEAFF WGY (WGY at 4.35)
Mrs. E. T. Saltonstall, WEEI
Temple of Song, WJZ WSM WFLA, 30 m. (KDKA at 4.40) (WBZ at 4.45)
Health talk, WBZ
Police news, musical program, WHAM
Market reports, KDKA
Betty and Bob, WLW
Science Service, F. A. Silcox, "Christmas Trees," WABC WHAS
Stocks, WPG
Jerry Blaine's Orchestra, WOR
Parent-Teachers Forum, WGN
Gweneth Lee, WNBX
- 4.45 P.M. EST; 3.45 CT**
Lady Next Door, WEAFF WEEI
Stocks, WGY
Stamp Club, WHAM
Business News, WLW

- Dick Messner's music, WABC WPG, 30 m. (WHAS, 15 m.)
"Science in Your Home," WOR
Blue Moments, WGN
- 5 P.M. EST; 4 CT**
Meredith Willson's Orchestra, WEAFF, 30 m. (WGY at 5.15)
"Your Schools and You," WEEI
Musical program, WGY
Your Health, WJZ WHAM KDKA WSM
Monitor Views News, WBZ
"Thrills of Tomorrow," WLW
Cocoanuts, WFLA, 30 m.
Livestock Market Report, organ, WHAS, 30 m.
Current Events, WOR
Aperitif, WMCA, 30 m.
- 5.15 P.M. EST; 4.15 CT**
Thrills of Tomorrow, WEEI
Jackie Heller, WJZ WSM
Farm market news, WBZ
Uncle Wiggily, WHAM
KDKA Kiddies' Klub, KDKA
Tim Healy, Stamp Club, WLW
"Skippy," WABC
Grace Dunn, soprano, WBBM
Nan, Mary and Camille, WPG
Pete Rice, Western drama, WOR
Soprano, WGN
- 5.30 P.M. EST; 4.30 CT**
Rooster Gazette, drama, WEAFF
Santa Claus, WEEI
Uncle Wiggily, WGY
Singing Lady, WJZ WBZ WHAM KDKA WBBM WLW
Business, professional women's hour, WSM
Gypsies, WFLA
Jack Armstrong, WABC WCAU
Milton Charles, organist, WBBM
Lynn Del Mar, songs, WPG
Kay Fayre, songs, WOR
Sally's Party, WMCA, 30 m.
Melodies, WGN
- 5.45 P.M. EST; 4.45 CT**
Nursery Rhymes, WEAFF WSM
Buddy and Blake, WEEI
Microphone Discoveries, WGY
Little Orphan Annie, WJZ WBZ WHAM KDKA WFLA
Financial reports, news, WSM
Jack Armstrong, WLW
"Robinson Crusoe, Jr.," WABC
Out of the Dusk, WHAS
Miniatures, WPG WCAU WBBM
Uncle Wiggily, WOR
Piano, WGN
- 6 P.M. EST; 5 CT**
Xavier Cugat's Orchestra, WEAFF WHAM, 28 m. (WBZ at 6.15)
The Evening Tattler, WEEI, 30 m.
High Priests of Harmony, WGY
Angelo Ferdinando's Orchestra, WJZ WHAM, 28 m. (WBZ from 6.15)
Adventures of Jimmie Allen, WBZ
Dan and Sylvia, KDKA
Around the World, WLW, 30 m.
String Ensemble, WSM
Musical Memories, WFLA, 30 m.
Buck Rogers, WABC WCAU
Sam, Gil and Louie, WHAS
Uncle Don, WOR, 30 m.
Dick Mansfield's Orchestra, WMCA
Popular Rhythm, WGN, 30 m.
- 6.15 P.M. EST; 5.15 CT**
Mid-Week Hymn Sing, WEAFF
Jimmy Allen, WGY
Hollywood Comedy Stars, WHAM
KDKA Orchestra, KDKA
Three on a Mike, WSM
Bobby Benson, Sunny Jim, WABC WCAU
Skippy, WHAS WBBM KMOX
Talk, Fisher's Gypsy Ensemble, WMCA
- 6.30 P.M. EST; 5.30 CT**
News, Mary Small, songs, WEAFF
Rhyming Reporter, news, Mayor J. M. Russell, Cambridge, WEEI
News, Brevities, WGY
News, Dorothy Page, vocalist, WJZ KDKA
News, weather, WBZ
News, Twilight Reveries, WHAM
Bob Newhall, WLW
Freddie Rose, WSM
Florida Military Academy, WFLA
Howard Barlow, "Understanding Music," WABC, 25 m. (news at 6.55)
Jack Armstrong, WBBM KMOX
Boys' Club, WOR
Singing Lady, WGN
Roundup, WMCA
- 6.45 P.M. EST; 5.45 CT**
Billy Batchelor, WEAFF WEEI WGY WTAM
Lowell Thomas, WJZ WBZ WHAM KDKA WLW
Little Orphan Annie, WSM WGN
Radio Special, WFLA
Woody and Willie, WBBM
Voice of Gold, WOR
Radio Stamp Club, WMCA
- 7 P.M. EST; 6 CT**
King's Guard Quartet, WEAFF WGY
Safety talk, WSM
Amos 'n' Andy, WJZ WBZ WHAM KDKA WLW WFLA
"Myrt and Marge," WABC WCAU
Dan Russo's Orchestra, WBBM, 30 m.
Ford Frick, sports, WOR
Ray Hendricks, WMCA
Jimmy Allan, WGN
- 7.15 P.M. EST; 6.15 CT**
Tintype Tenor, WJZ WHAM WSM
Joe and Bateese, WBZ
Lois Miller, KDKA
Lum and Abner, WLW
Just Plain Bill, WABC WCAU
Hollywood Comedy Stars, WOR
Maximilian Bergere's Orchestra, WMCA WIP
Ensemble, WGN
- 7.30 P.M. EST; 6.30 CT**
You and Your Government, "Enforcing Tax Collections," WEAFF WGY WFLA
After Dinner review, WEEI
Edgar Guest, poet, trio, Josef Koestner's Orchestra, WJZ WBZ WHAM KDKA, 30 m.
String Trio, WLW
Asher and Little Jimmie, WSM
Jerry Cooper, WABC WCAU
Buck Rogers, WHAS WBBM KMOX
"The Affairs of Roland," WOR
Jan, Jude, Jerry, WMCA
Dance Tunes, WGN
- 7.45 P.M. EST; 6.45 CT**
Vaughn de Leath, songs, WEAFF
Big Freddie Miller, WEEI
Vagabonds, WGY
Unbroken Melodies, WLW
The Forty-Niners, WSM
Comedy Capers, WFLA
Boake Carter, WABC WCAU WHAS WBBM KMOX
Dance music, WOR
Harry Hershfield, WMCA
Whistler and Dog, WGN
- 8 P.M. EST; 7 CT**
Leo Reisman's Orchestra, Phil Duey, WEAFF WEEI WGY WFLA WSM WSB, 30 m.
Crime Clues Drama, WJZ WBZ KDKA WLW, 30 m.

- Behind the Headlines, WHAM
"Lavender and Old Lace," Frank Munn, Hazel Glenn, WABC WHAS WBBM KMOX, 30 m.
Phil Emmerton's Orchestra, WCAU, 30 m. (WPG at 8.15)
Ray Ziegler, sports, WPG
Eddy Brown, violinist, WOR, 30 m.
Strickland Gillilan, WMCA
Ensemble, WGN
- 8.15 P.M. EST; 7.15 CT**
Jimmie Allen's Air Adventures, WHAM
Vira C. Parks, contralto, WPG
Five-Star Final, WMCA
WGN Orchestra, WGN
- 8.30 P.M. EST; 7.30 CT**
Wayne King's Orchestra, WEAFF WEEI WGY WTAM WSM WSB, 30 m.
Lawrence Tibbett, John B. Kennedy, Wilfred Pelletier's Orchestra, WJZ WBZ WHAM KDKA, 45 m.
Follies, WLW WOR, 30 m.
"Melodiana," Abe Lyman's Orchestra, Vivienne Segal, Oliver S mith, tenor, WABC WHAS WBBM KMOX, 30 m.
Christmas Seal program, WPG
Paradise Island, WMCA, 30 m.
Charlie Agnew's Orchestra, WGN
- 8.45 P.M. EST; 7.45 CT**
Claude Hopkins' Orchestra, WPG
Northwestern U., WGN
- 9 P.M. EST; 8 CT**
Ben Bernie's music, WEAFF WEEI WGY, 30 m.
Melody Parade, WLW, 30 m.
Revels, WSM, 30 m.
Old Time Songs, WFLA, 30 m.
Bing Crosby, Boswell Sisters, WABC WCAU WHAS WBBM KMOX, 30 m.
Doris Dehn, soprano, WPG
"Happy Hal's Housewarming," WOR, 30 m.
U. S. Navy Symphony Concert, WMCA, 30 m.
Mardi Gras, WGN, 30 m.
- 9.15 P.M. EST; 8.15 CT**
Vincent Ponzii, tenor, WPG
- 9.30 P.M. EST; 8.30 CT**
Ed Wynn, Graham McNamee, Eddie Duchin's Orchestra, WEAFF WEEI WGY WLW WSM WFLA, 30 m.
Hands Across the Border, soloists, Joseph Littau's Orchestra, WJZ WBZ, 30 m.
Merry-Go-Round, WHAM, 30 m.
Isham Jones' Orchestra, Nancy Martin, Melodeers, Quartet, WABC WCAU WPG WHAS WBBM KMOX, 30 m.
Lum and Abner, WOR WGN
Drama Guild, WMCA, 30 m.
- 9.45 P.M. EST; 8.45 CT**
KDKA Orchestra, KDKA
Ted Weems' Orchestra, WOR WGN
- 10 P.M. EST; 9 CT**
Operetta, John Barclay, Frank McIntyre, Gladys Swarthout, Peggy Allenby, WEAFF WEEI WGY WLW WSM WFLA, 1 h.
"Industries' Problems," Alfred P. Sloan, WJZ WBZ KDKA, 30 m.
State Troopers drama, WHAM, 30 m.
Melody Parade, WLW, 30 m.
Glen Gray's Orchestra, Annette Hanshaw, Walter O'Keefe, Ted Husung, WABC WHAS WPG WBBM KMOX, 30 m.
Elaine Jordan, "blues," WOR
Jolly Russians, WMCA, 30 m.
- 10.15 P.M. EST; 9.15 CT**
Current Events, WOR
Bridge Club of the Air, WGN
- 10.30 P.M. EST; 9.30 CT**
NBC Dance Orchestra, WJZ WHAM, 30 m.
Joe Rimes' Orchestra, WBZ, 30 m.
City Beautification Forum, KDKA
George Givot, WABC WCAU WPG WHAS 30 m.
Sinfonietta, WOR, 30 m.
Scott Fisher's Orchestra, WMCA
Chicago Theatre of the Air, WGN, 30 m.
- 10.45 P.M. EST; 9.45 CT**
Songsters, KDKA, 30 m.
Leon Friedman's Orchestra, WMCA
- 11 P.M. EST; 10 CT**
The Grumitts, WEAFF WFLA
Weather, Current Events, WEEI
Charles Boulanger's Orchestra, WGY, 30 m.
Del Campos' Orchestras, WJZ WFLA, 30 m. (WBZ at 11.15)
Weather, Sports Review, WBZ
Jan Carlson's Orchestra, WHAM, 30 m.
Uncle Tom and Betty, KDKA
News, Church in the Hills, WLW, 30 m.
Amos 'n' Andy, WSM
Joe Hayes' Orchestra, WABC, 30 m. (WPG WBBM at 11.15)
Weather, Five-Star Final, WPG
Myrt and Marge, WHAS WBBM KMOX
Weather, current events, WOR
Voice of Romance, WMCA
Dudley Crafts Watson, WGN
- 11.15 P.M. EST; 10.15 CT**
Robert Royce, tenor, WEAFF WEEI
Weather, orchestra, WHAS
William Penn Orchestra, KDKA, 30 m.
Moonbeams, WOR
Leon Belasco's Orchestra, WMCA, 30 m.
Dream Ship, WGN
- 11.30 P.M. EST; 10.30 CT**
Will Osborne's Orchestra, WEAFF WEEI, 30 m.
Will Osborne's Orchestra, WEAFF, 30 m.
Chick Condon's Orchestra, WGY, 30 m.
Charlie Davis' Orchestra, WJZ WBZ WHAM WFLA, 30 m. (KDKA at 11.45)
Music Conservatory recital, WLW, 30 m.
Wagon Wheel Orchestra, WSM, 30 m.
Henry Busse's Orchestra, WABC WCAU WPG WBBM
Dream Doctor, WHAS
Felix Ferdinando's music, WOR, 30 m.
Wayne King's Orchestra, WGN
- 11.45 P.M. EST; 10.45 CT**
Al Kavelin's Orchestra, WABC WCAU WPG WBBM KMOX
Peter Riccardi, WHAS
Arturo Valentino's Orchestra, WMCA
Jan Garber's Orchestra, WGN, 30 m.
- 12 MIDNIGHT EST; 11 P.M. CT**
Irving Aaronson's music, WEAFF WEEI WGY, 30 m.
Ralph Kirby, Jack Denny's Orchestra, WJZ WBZ KDKA WSM WFLA, 30 m.
Clyde Lucas' music, WABC WCAU WPG WBBM KMOX, 30 m.
Dance Music, WHAS, 2 h.
Eddie Laughton's music, WLW (30 m.
Florence Richardson's music, WOR, 30 m.
Day's End, WMCA, 30 m.

An Explosive Comedian



LOU HOLTZ is much flattered because his California radio fans have presented him with 28 walking sticks. For Lou is hardly ever seen without one. And he likes cigars, too. But he seldom accepts them as gifts because one such exploded before the microphone, much to his embarrassment.

Dr. Walter Damrosch's Musical Appreciation Hour Reaches Millions

Is Heard In Japan and Africa

Of the public schools in the United States, more than 50,000 are equipped with radio receiving sets.

And on Friday mornings at 11 o'clock most of these sets are tuned to Dr. WALTER DAMROSCH's hour of musical appreciation.

In Radio City, New York, the kindly Dr. DAMROSCH and his orchestra of picked musicians play for young America works of the greatest composers in the world.

This NBC Musical Appreciation Hour doesn't seem like school at all. It is an interesting radio program. Dr. DAMROSCH tells about the life and adventures of a great composer and how he came to write such music.

In spite of the fact that everyone enjoys these programs, they are accepted in many parts of the country as an actual course in the schools and credit is given for it as if it were history or English.

American young people are by no means the only ones to listen to these music broadcasts.

Requests come to the National Broadcasting Company for booklets to help follow the music course from Africa, Brazil, Japan, San Domingo, China, Dutch West Indies, The Philippines, Hawaii, Chile, France, Bagdad, Canada and Mexico.

Although this course in radio music is not immediately useful to many people, they find that what they learned from Dr. DAMROSCH helps them enjoy fine music more as they grow older.

According to a survey made by the NBC, it is estimated that more than six million people listen to this program every Friday.

The Bright Land Of Make-Believe



JOLLY BILL and JANE, photographed in their usual merry morning mood.

Some years ago WILLIAM STEINKE walked into a Connecticut newspaper office and announced that he was probably the best cartoonist the editor had ever laid eyes on.

The editor remarked that WILLIAM had a lot of nerve and promptly told him to go ahead and draw.

But after a time, Mr. STEINKE decided that radio would be a good thing to get into. Now he

is on WJZ at 7.45 every morning except Sunday, with his 11-year-old "niece."

In their early morning broadcasts they create a merry world of make-believe as Jolly BILL STEINKE tells stories to JANE.

Always in good humor, from whence he gets his name, Jolly BILL has to have a tall microphone in front of him because he is over six feet and weighs something like 250 pounds.

Smith Gets Fan Letter

Whispering JACK SMITH, the CBS baritone, has received many odd letters from listeners in his ten years of broadcasting. One of the most unusual came this week from a Brooklyn man. It read "I always enjoy your programs, and have for years. Any time you want a nice bathing girl tattooed on your chest or arm, come down to my shop and I'll do it for nothing. That's fair enough, isn't it?"

Bob Emery Returns to The Radio

"Big Brother" BOB EMERY, for many years a figure in children's programs on Boston radio stations, and a year ago featured on the networks, comes back to the air this week over the NBC-WEAF network.

Assisting him in his new program will be two singers—BREEN and DeROSE—who have sung and played the ukulele and piano for more than 2000 radio performances.

The new program is heard on Sunday, Monday, Wednesday and Friday at 10.30 A. M.

BOB EMERY's Big Brother Club of the Air, which he organized back in 1924, grew to have 100,000 boys and girls as members. His comments and songs and the talented young people who appeared with him on these programs, made the broadcasts among the best-liked children's programs.

BOB's last appearance in New England on the radio was over Station WHDH, where, with a troupe of young actors and singers, he conducted a morning program.

Frank Parker is Also An Athlete

FRANK PARKER, NBC tenor, may be slight in build but he's one of radio's really athletic singers. Perhaps that is why he's always in the pink of condition. His favorite sport is polo and he plays it with a vengeance.

But it isn't generally known that PARKER is an accomplished boxer, a good gymnast and an expert swimmer.

These Programs Are Proving Popular With Children Of All Ages

7.45 A.M. EST; 6.45 CT

Jolly Bill and Jane, WJZ (Monday through Saturday)

9 A.M. EST; 8 CT

Coast to Coast on a Bus, WJZ WBZ KDKA WLW WGAR (WHAM at 9.30) (Sunday only)

11 A.M. EST; 10 CT

NBC Music Appreciation Hour, WEA F WEEI WJAR WCSH WTAG WTIC WGY WTAM WBZ WHAM KDKA WLW WSM WFLA (Friday only)
Children's Hour, WABC (Sunday only)

4 P.M. EST; 3 CT

John Martin's Story Program, WEA F WSM WFLA WJAR WCSH WTAG (Monday only)

4.30 P.M. EST; 3.30 CT

Our Barn, WEA F WEEI WJAR WCSH WTAG WTIC WGY WFLA (Saturday only)

4.45 P.M. EST; 3.45 CT

Adventures on Mystery Island, WEA F WEEI WJAR WCSH WTAG WTIC WGY (Monday through Thursday)

5 P.M. EST; 4 CT

"Og, Son of Fire," WABC WAAB WFLA (Monday, Wednesday, Friday)

5.15 P.M. EST; 4.15 CT

Skippy, WABC WAAB WEAN WDRC WCAU (Monday through Friday)
Straight Shooters, Tom Mix, WEA F WEEI WJAR WCSH WTAG WTIC WGY WLW WTAM (Monday, Wednesday, Friday)
Sheriff Pete Rice, WOR (Tuesday, Thursday, Saturday)

5.30 P.M. EST; 4.30 CT

Alice in Orchestralia, WEA F WGY WSM WCSH WTIC WTAG (Wednesday only)
Jack Armstrong, WABC WNAC WEAN WDRC WMAS WCAU (Monday through Saturday)
Tales of Courage, WEA F WTIC WFLA (Thursday only)
The Singing Lady, WJZ WBZ WHAM KDKA WBAL WLW WGAR (Monday through Friday)

5.45 P.M. EST; 4.45 CT

Albert Payson Terhune Dog Drama, WJZ WBZ WHAM KDKA WGAR (Sunday only)

Captain Tim Healy's Stamp Club, WEA F WEEI WJAR WCSH WTAG WTIC WGY WLW WTAM WSM WFLA (Monday, Wednesday and Friday)

Little Orphan Annie, WJZ WBZ WHAM KDKA WBAL WFLA WGAR (Monday through Friday)

Nursery Rhymes, WEA F WSM (Tuesday only)
Robinson Crusoe, Jr., WABC WDRC WLW WMAS WCAU WPG (Tuesday, Thursday, Friday and Saturday)

6 P. M. EST; 5 CT

Buck Rogers, WABC WCAU WAAB WHAS (Monday through Thursday)

6.15 P.M. EST; 5.15 CT

Bobby Benson and Sunny Jim, WABC WCAU WAAB WEAN WICC WDRC WORC WLWZ (Monday through Friday)
Jules Verne's "Mysterious Island," WEA F WJAR (Monday, Wednesday, Friday)

6.45 P.M. EST; 5.45 CT

Billy Batchelor, WEA F WEEI WJAR WCSH WTAG WTIC WGY WTAM (Monday through Friday)

Dionne Quintuplets To Make Radio Debut On CBS-WABC Chain

THE MOST famous babies in the world—the DIONNE quintuplets of Ontario—will make their radio debut over the coast-to-coast networks of the Columbia Broadcasting System and the Canadian Radio Commission on Thursday, December 20, from 8.15 to 8.30 P. M.

The care and feeding of the five tiny girls, the regimentation of their every hour, even their crooning and crying, will be revealed to Columbia listeners from the small modern hospital which has been built on the DIONNE farm.

Columbia engineers will push deep into the northern reaches of Ontario to setup

their equipment for the broadcast. They will go to North Bay, then to Callandar, where the babies' Physician, Dr. ALLEN R. DAFOE, makes his home. The DAFOE Hospital for the DIONNE quintuplets is two and a half miles out from Callandar along a snow-choked country road—a once lonely biway that has seen much heavy traffic since the birth of the five girls.

The quintuplets—YVONNE, ANNETTE, MARIE, CECLÉ and EMILIE—were six months old on November 28. They have survived in the face of overwhelming odds against their chances to live, and they are now thriving under the zealous

care given them by Dr. DAFOE and his staff of nurses.

The broadcast has been carefully timed to give the radio audience an intimate glimpse of the routine that is necessary in the little hospital.

The babies will face the microphone for the first time just before their evening meal, which precedes eight hours of sleep. At the time they are on the air, they should be wide awake, full of kicks, and willing to express themselves vocally to their great audience.

One of the nurses at the hospital will take part in the program. Her task is to coax the infants into baby-talking for the radio. Dr. DAFOE him-

self will talk. It will be his radio debut, too.

W. H. ANDERSON and OLIVER DIONNE, the quintuplets' grandfather, both of whom are designated as official guardians of the little girls, likewise will have something to say.

The broadcast will come from the reception room of the hospital, which was built by contributions to a "quintuplet fund," and from the room in which the babies are shielded from the eyes of a curious world.

Engineers of Columbia's Montreal outlet, Radio Station CKAC, will surmount the technical difficulties involved in

bringing a broadcast from the remote north country.

A special wire recently installed from the hospital to Dr. DAFOE's office in Callandar will be utilized in bringing the first DIONNE quintuplet broadcast to the public.

Christmas Bells On Radio

The four corners of the world will be linked during Christmas week when the Columbia Broadcasting System will bring to this country the chiming of Christmas bells from Bethlehem, Bombay, India, New Zealand, Canada, Ireland and England. There will be a broadcast from a remote point in South Africa. The program will be heard at 8.55 on Christmas morning.

Wednesday, December 12 - Gracie Allen on CBS-WABC, 9.30 P.M.

Highlights

P.M.

- 3.30—B. B. C. Symphony Orchestra, NBC-WJZ
- 4.30—Rochester Civic Orchestra, NBC-WJZ
- 8.00—Mary Pickford, NBC-WEAF
- 8.15—Edwin C. Hill, CBS-WABC
- 8.30—Everett Marshall's Varieties, CBS-WABC
- Wayne King's Orchestra, NBC-WEAF
- 9.00—Nino Martini, CBS-WABC
- Fred Allen, NBC-WEAF
- 9.30—John Charles Thomas, NBC-WJZ
- George Burns, Gracie Allen, CBS-WABC
- 10.00—Broadcast to Byrd, CBS-WABC
- 10.30—One Man's Family, NBC-WEAF

(All programs are listed in Eastern Standard Time. Central Time is one hour earlier.)

- 7.15 A.M. EST; 6.15 CT**
Devotion, WLW
World Observer, WNBX
- 7.30 A.M. EST; 6.30 CT**
Yoichi Hiraoka, xylophonist, WJZ
Salt and Peanuts, WLW
Rise and Shine, WSM, 1 h.
Breakfast Rhythm, WFLA, 30 m.
Organ Revue, WABC, 30 m.
- 7.45 A.M. EST; 6.45 CT**
B. A. Rolfe's Orchestra, Men About Town
WEAF, 45 m. (WLW at 8) (WEEI, 15 m.)
Deane Moore, WEEI
Musical program, WGY
Jolly Bill and Jane, WJZ
Jack Foy, songs, WHAM
Plantation Days, WLW
- 8 A.M. EST; 7 CT**
Weather, Current Events, WEEI
Musical Clock, WGY, 30 m.
Devotions, WJZ WBZ KDKA WFLA
Song Reporter, WABC, 25 m.
- 8.15 A.M. EST; 7.15 CT**
William Meeder, organist, WJZ WHAM
KDKA WBAL, 30 m. (WBZ WFLA, 15 m.)
- 8.30 A.M. EST; 7.30 CT**
Cerio, WEAF WEEI WGY WLW WSM,
WFLA, 30 m.
Weather, WBZ
Lyric Serenade, WABC, 27 m.
Organ, WPG, 30 m.
Georgia Wildcats, WHAS
- 8.45 A.M. EST; 7.45 CT**
Landt Trio and White, WJZ WBZ WHAM
KDKA
Bob Archer, WHAS
- 9 A.M. EST; 8 CT**
Organ, Richard Leibert, WEAF, 30 m.
Kay Kyser's Orchestra, WGY
Breakfast Club, Morin Sisters, WJZ WBZ,
1 h. (WSM at 9.30) (KDKA, 30 m.)
WHAM, 9.35 to 9.45) WFLA at 9.15)
Variety, WHAM
Hymns, WLW
Devotion, WSM
Birthday Club, WFLA
Joke Book, WABC WCAU WHAS, 30 m.
- 9.15 A.M. EST; 8.15 CT**
Deane Moore, WEEI
Billy Rose, tenor, WGY
String Music, WLW
Leon Cole, organ, WSM
- 9.30 A.M. EST; 8.30 CT**
Mystery Chef, WEAF WEEI WGY WSM
Styles, KDKA
Courtship and Marriage Forum, WLW
Rambles in Rhythm, WABC WCAU, 30 m.
- 9.45 A.M. EST; 8.45 CT**
Southernaires, male quartet, WEAF
News, WEEI
Musical program, WGY
Household Hour, WHAM, 30 m.
Jacksons, WLW
Work-a-Day Thoughts, KDKA
Bob Archer, WHAS
- 10 A.M. EST; 9 CT**
News, Johnny Marvin, tenor, WEAF WGY
WFLA
Josephine Gibbons, WJZ WBZ KDKA WSM
Suzanne Littleford, WLW
News, Vi Bradley, WABC
News, Home Hour, WPG, 1 h.
DX Tips, WNBX
- 10.15 A.M. EST; 9.15 CT**
Clara, Lu 'n' Em, WEAF WEEI WGY
WLW WSM WSB WTAM WGN
Florida Trio, WJZ WBZ WHAM
Sammy Fuller, KDKA
Morning Topics, WFLA
Bill and Ginger, WABC
Dolly Dean, WHAS
Town Crier, WNBX
- 10.45 A.M. EST; 9.45 CT**
Benny Crocker, WEAF WEEI WGY WLW
WFLA WTAM
News, Radio Kitchen, WJZ WHAM KDKA
News, musicale, Highway Safety talk, WBZ
Morning Concert, WNBX
- 11 A.M. EST; 10 CT**
Madeline Marshall, piano recital, WEAF
Friendly Kitchen, WEEI
Betty Moore, interior decorator, WGY
WHAM WLW
Honeymooners, WJZ KDKA WSM WFLA
Fish Stories, WBZ
Farm talk, WPG
Sanders Sisters, WHAS
Sporting News, WNBX

Popularity



JAMES MELTON, popular tenor, appears with FRED ALLEN on the Town Hall program Wednesdays at 9 P. M. on the NBC-WEAF network.

- 3.15 P.M. EST; 2.15 CT**
Dreams Come True, Barry McKinley, baritone, Ray Sinatra's Orchestra, WEAF
WEEI WGY WLW WSM WTAM
Joe White, tenor, WJZ WBZ WHAM
WFLA
Human values, KDKA
Orchestra, WGN
Hollywood Inn, WNBX
- 3.30 P.M. EST; 2.30 CT**
Woman's Radio Review, Joseph Littau's Orchestra, WEAF WGY, 30 m.
Reading Circle, WEEI, 30 m.
B. B. C. Symphony Orchestra, WJZ WSM
WFLA, 30 m. (WBZ KDKA, 15 m.)
"Song of the City," WLW
Newark Museum talk, WOR
Art Lecture, WMCA
Home Management talk, WGN
- 3.45 P.M. EST; 2.45 CT**
Animals in the News, WBZ
Bond of Friendship, WLW
Frank Benn's Orchestra, WFLA
Studio Orchestra, WOR
Madeline Hardy, piano, WMCA
Organ, WGN
Story Book Lady, WNBX
- 4 P.M. EST; 3 CT**
Martha Meers, contralto, WEAF WSM
Stocks, WEEI
Life of Mary Sothorn, WLW
National Student Federation, Newton D. Baker, WABC WPG
Silver Strains, WOR
Sports Review, WMCA, 1 h.
Piano, WGN
Dorris Gibson, WNBX
- 4.15 P.M. EST; 3.15 CT**
"Herald of Sanity," Dr. Joseph Jastrow, psychologist, WEAF WEEI WGY WSM
WFLA
Sisters of the Skillet, WJZ WBZ WHAM
Karen Fladoes, KDKA
Charlie Kent's Orchestra, WLW
Institute of Music, WABC, 45 m. (WPG, 30 m.) (WHAS, 15 m. at 4.30)
Devotions, WHAS
Banjo, Pianos, WOR
Mark Love, basso, WGN
Webby Mack, WNBX
- 4.30 P.M. EST; 3.30 CT**
Jesters, Trio, WEAF WEEI WGY
Rochester Civic Orchestra, Guy Frazer Harrison, conductor, WJZ WHAM WSM, 1 h.
(WBZ, 30 m.) (KDKA WFLA, 4.45-5)
Markets, KDKA
Betty and Bob, WLW
Drama, stocks, WCAU
Robert Reud, "Town Talk," WOR
Blue Moments, WGN
- 4.45 P.M. EST; 3.45 CT**
Lady Next Door, WEAF
Emerald Gems, WEEI
Stocks, WGY WPG
Business news, WLW
Organ, WHAS, 45 m.
"Science in Your Home," WOR
- 5 P.M. EST; 4 CT**
Chick Webb's Orchestra, WEAF WEEI
Musical program, WGY
Monitor Views News, WBZ
Memories, KDKA
Ponce Sisters, WLW
"Og, Son of Fire," WABC
Men of Notes, WBBM
Weather, Current Events, WOR
"Big Shots," WMCA
Chicago's Current music, WGN
- 5.15 P.M. EST; 4.15 CT**
Tom Mix Straight Shooters, WEAF WEEI
WGY WLW WTAM
Violinist, WBZ
Kiddies' Klub, KDKA
"Skippy," WABC
Guitarist, WPG
Gracie Dunn and Norm Sherr, WBBM
"Captain Tom and his Pirate Ship," WOR
Popular Rhythm, WGN, 30 m.
- 5.30 P.M. EST; 4.30 CT**
Alice in Orchestralia, WEAF WEEI WSM
Jack and Jill, WGY
Singing Lady, nursery rhymes, songs stories,
WJZ WBZ WHAM KDKA WLW
Jack Armstrong, WABC WCAU
Talk, care of the feet, WPG
Out of the Dusk, WHAS, 30 m.
Sally's Party, WMCA, 30 m.
- 5.45 P.M. EST; 4.45 CT**
Capt. Tim Healy's Stamp Club, WEAF
WEEI WGY WTAM
Little Orphan Annie, WJZ WBZ WHAM
KDKA WFLA
Jack Armstrong, WLW
Financial reports, news, WSM

- Patti Chapin, songs, WABC WCAU WBBM
Larry Charles tenor, scores, WPG
Adventures of Jimmie Allen, WOR
Berenice Tenor, soprano, WGN
- 6 P.M. EST; 5 CT**
Xavier Cugat's orchestra, WEAF
Evening Tunes, WEEI, 30 m.
Municipal Series, WGY
Education in the News, WJZ
Adventures of Jimmie Allen, WBZ
Sports, WHAM
Dan and Sylvia, KDKA
News, Robert Tucker, pianist, WSM, 30 m.
Bailey Axton, tenor, WLW
Francis Craig's music, WSM
Antonia Loper Orchestra, WFLA, 30 m.
Buck Rogers, WABC WCAU
Boy Scout Drama, WHAS
"Og, Son of Fire," WBBM KMOX
Uncle Don, WOR, 30 m.
Jerry Blaine's Orchestra, WMCA
Popular Tunes, WGN, 30 m.
- 6.15 P.M. EST; 5.15 CT**
"Desert Kid," WEAF
Jimmy Allen, WGY
Alma Kitchell, contralto, WJZ WHAM
KDKA
Ray Mones, WBZ
Bachelor of Song, WLW
Sazie and Sallie, WSM
Bobby Benson, Sunny Jim, WABC WCAU
Skipper, WHAS WBBM KMOX
Investors' talk, Gene Kardos' Orchestra,
WMCA
- 6.30 P.M. EST; 5.30 CT**
News, Arlene Jackson, WEAF
Rhyming Reporter, news, drama, WEEI
News, evening brevities, WGY
News, Three X Sisters, WJZ
News, weather, WBZ
Pleasure Cruise, WHAM
Comedy Stars of Hollywood, KDKA
Bob Newhall, WLW
Reddie Rose, WSM
News, Melody's Garden, WFLA
"The Shadow," WABC, 25 m. (news, 6.55)
Club Program, WHAS
Jack Armstrong, WBBM KMOX
News commentator, WOR
Screen Revue, WMCA
- 6.45 P.M. EST; 5.45 CT**
Billy Batchelor, WEAF WEEI WGY WTAM
Lowell Thomas, WJZ WBZ WHAM KDKA
WLW WFLA
Louisville Women's program, WHAS
"Cocktail Hour," WOR
Sagebrush Harmonizers, WMCA
Little Orphan Annie, WGN WSM
- 7 P.M. EST; 6 CT**
Pickens Sisters, WEAF
Salute, WEEI
Jim Healey, WGY
Amos 'n' Andy, WJZ WBZ WHAM KDKA
WLW WFLA
Reddy Kilowatt, Health talk, WSM
Myrt and Marge, WABC
Weather, Crossroads, WHAS
Edgewater Beach Concert Orchestra, WBBM
Ford Erick, sports, WOR
Talk, WMCA
Jimmy Allan, WGN
- 7.15 P.M. EST; 6.15 CT**
Plantation Echoes, Willard Robison's Orchestra,
WJZ WBZ WHAM KDKA WSM
Lum and Abner, WLW
Just Plain Bill, WABC WCAU
Dan Russo's Orchestra, WBBM
Marion Chase, songs, WOR
Ensemble, WGN
Jewish Vagabond Singers, WMCA
- 7.30 P.M. EST; 6.30 CT**
Gould and Shefter, WEAF
After Dinner Revue, WEEI
Lang Sisters, WGY
Red Davis, WJZ WBZ WHAM KDKA WLW
WFLA WSM
Paul Keast, Rollo Hudson's Orchestra, WABC
WCAU
Buck Rogers, WHAS WBBM KMOX
Armand Veczy's Concert Orchestra, WOR
Molly Picon, George Touller's music,
WMCA
Dance orchestra, WGN
- 7.45 P.M. EST; 6.45 CT**
Uncle Ezra, WEAF WEEI WGY
Dangerous Paradise, sketch, Nick Dawson,
WJZ WBZ WHAM KDKA WLW WSM
Melody Man, WFLA
Boake Carter, WABC WCAU WHAS WBBM
KMOX
Dance Music, WOR
Doc Savage, WMCA
Amateur Night, WGN
- 8 P.M. EST; 7 CT**
Mary Pickford, Gale Gordon, Jeanette Nolan,
Theodore Osborn, Lou Silver's Orchestra,
WEAF WEEI WGY WSM WFLA, 30 m.
Crime Clues, WJZ WBZ KDKA WLW, 30 m.
Musical program, WHAM
"Easy Aces," WABC WHAS WBBM
KMOX
VFW Program, WPG
The Lone Ranger, WOR WGN, 30 m.
Three Little Funsters, WMCA
- 8.15 P.M. EST; 7.15 CT**
Jimmy Allen's Adventures, WHAM
Edwin C. Hill, WABC WCAU WHAS
WBBM KMOX
Moonshiners, WPG
Five-Star Final, WMCA
- 8.30 P.M. EST; 7.30 CT**
Wayne King's music, WEAF WGY, 30 m.
Luddy Clark, John Herrick, WEEI, 30 m.
Lanny Ross, Log Cabin Orchestra, WJZ
WHAM KDKA, 30 m.
Dan Humber's Orchestra, WBZ
Henry Thies' Pepsters, WLW
WSM Salutes Johnson City, Tenn., WSM,
30 m.
Everett Marshall, Broadway Varieties, Alex
Gray, De Wolf Hopper, WABC WCAU
WHAS WBBM KMOX, 30 m.
Jane and Jimmy Cullen, WPG
Eduard Werner's Varieties, WOR, 30 m.
Louis K. Anspacher, WMCA
Kay Kyser's Orchestra, WGN
- 8.45 P.M. EST; 7.45 CT**
Frank and Phil, WBZ
Smilin' Ed McConnell, WLW
Maple Leaf Sextet, WPG
Kay Thompson, WMCA
Northwestern University, WGN
- 9 P.M. EST; 8 CT**
Town Hall Tonight, Fred Allen, James Melton,
Lennie Hayton's Orchestra, Songsmiths
WEAF WEEI WGY WLW WSM WFLA,
1 h.
Warden Lewis E. Laves, "200,000 Years in
Sing Sing," Thomas Belviso's Orchestra,
WJZ WBZ KDKA WHAM WBAL, 30 m.
Nino Martini, Andre Kostelanetz' Orchestra,
WABC WCAU WPG WHAS WBBM
KMOX, 30 m.
"Happy Hal's Housewarming," WOR, 30 m.
Americana, WMCA, 45 m.
Dance orchestra, WGN
- 9.15 P.M. EST; 8.15 CT**
Comedy Stars, WGN

Weather Reports

WEEKDAYS

A. M.

6.45 WOR	7.45 WOR
7.00 WOR	8.00 WOR WEEI
7.15 WOR	8.30 WLW WBZ
	9.45 KDKA
7.25 KMOX	WGY
(except Sunday) 11.30 WLW	
7.30 WOR	WBAL

Noon

WGY WBZ WBAL WFLA WHAS
(KDKA, Saturday only)

P. M.

12.15 WLW WBZ	6.00 WHAS
(WBZ not on	6.30 WFLA
Thursday)	6.35 WGY WBZ
12.30 WJZ	7.15 WBAL
12.50 WTAM	10.15 WHAS
1.00 WEAF WPG	11.00 WGY WTAM
2.45 WGY	WPG WOR
4.30 KDKA WOR	WEEI WBZ
5.00 WGY	11.30 WGN
5.14 WLW	

SUNDAYS

A. M.

8.29 WLW	10.45 KDKA
8.30 WBAL WBZ	11.30 WLW

Noon

WGY KDKA WBAL WHAS

P. M.

12.15 WLW WBZ	6.00 WHAS WBZ
1.00 WPG	6.30 WBAL
1.45 WFLA	10.15 WHAS
4.30 WGY WOR	11.00 WPG WOR
5.14 WLW	11.30 WGN

- 9.30 P.M. EST; 8.30 CT**
John Charles Thomas, baritone, WJZ WBZ
WHAM KDKA WBAL, 30 m.
George Burns, Gracie Allen, Bobby Dolan's
Orchestra, WABC WCAU WBBM KMOX,
30 m.
Organ, WPG, 30 m.
Lum and Abner, WOR WGN
- 9.45 P.M. EST; 8.45 CT**
Jan Garber's Orchestra, WOR WGN
Housing program, WMCA
- 10 P.M. EST; 9 CT**
Lombardo-Land, Pat Barnes, WEAF WEEI
WGY WLW WFLA WSM, 30 m.
Elisha Hanson, "Purity in News," WJZ
Martha Baird, pianist, WBZ
Byrd program, Mark Warnow's Music,
WABC WCAU WHAS WBBM KMOX,
Dorsey Anderson, WPG
"Court of Literary Justice," WOR
- 10.15 P.M. EST; 9.15 CT**
Madame Sylvia, WJZ WBZ WHAM KDKA
Current Events, Harlan Eugene Read, WOR
Pioneers, WPG
Gene Kardos' music, WMCA
Earl Burnett's Orchestra, WGN
- 10.30 P.M. EST; 9.30 CT**
One Man's Family, Anthony Smythe, WEAF
WEEI WGY WFLA WLW WSM, 30 m.
Jack Denny's Orchestra, Harry Richman and
John B. Kennedy, WJZ WHAM, 30 m.
Sammy Liner's Orchestra, WBZ, 30 m.
Pittsburgh Varieties, KDKA, 30 m.
Mary Eastman, soprano, Evan Evans, baritone,
Howard Barlow's Orchestra, WABC
WCAU WPG WHAS, 30 m. (KMOX,
15 m.)
Jean Goldkette's Orchestra, WOR, 30 m.
Archie Bleyer's music, WMCA, 30 m.
Dance Orchestra, WGN, 30 m.
- 11 P.M. EST; 10 CT**
Jack Berger's Orchestra, WEAF
Weather, current events, WEEI
Ray Nichols' Orchestra, WGY, 30 m.
Emil Coleman's Orchestra, WJZ WFLA,
30 m.
Weather, WBZ
Tommy Tucker's Orchestra, WHAM, 30 m.
Uncle Tom and Betty, KDKA
News, WLW
Amos 'n' Andy, WSM
Leon Belasco's Orchestra, WABC WCAU
WHAS, 30 m. (WBBM at 11.15)
Weather, Steel Pier music, WPG, 30 m.
Myrt and Marge, WBBM KMOX
Weather, current events, WOR
Voice of Romance, WMCA WIP
Dudley Crafts Watson, WGN
- 11.15 P.M. EST; 10.15 CT**
Robert Royce, tenor, WEAF WEEI
Joe Rines' Orchestra, WBZ
Orchestra, KDKA, 30 m.
Weather, music, WHAS
Moonbeams, WOR
Scott Fisher's Orchestra, WMCA
- 11.30 P.M. EST; 10.30 CT**
Art Kassel's Orchestra, WEAF WEEI WGY,
30 m. (WSM at 11.45)
Jolly Coburn's Orchestra, WJZ WHAM
WFLA, 30 m. (KDKA at 11.45)
"Dead Men Prowl," WBZ, 30 m.
Marjorie Cooney, piano, WSM
Ozzie Nelson's music, WABC WPG, 30 m.
Dream Doctor, WHAS, 30 m.
Will Osborne's Orchestra, WOR, 30 m.
Charlie Davis' Orchestra, WMCA, 30 m.
Wayne King's Orchestra, WGN
- 11.45 P.M. EST; 10.45 CT**
Jan Garber's Orchestra, WGN, 30 m.
- 12 MIDNIGHT EST; 11 P.M. CT**
George Olsen's music, Ethel Shutta, WEAF
WEEI WGY, 30 m.
Archie Bleyer's Orchestra, WJZ WBZ KDKA
WFLA, 30 m.
Jacques Renard's Orchestra, WABC WPG
30 m.
Sammy Watkin's music, WHAS, 30 m.
Keith Beecher's Orchestra, WBBM
Eddie Laughton's Orchestra, WLW, 30 m.
Wagon Wheel Orchestra, WSM, 30 m.
Julie Wintz's Orchestra, WOR, 30 m.
Amateur Night in Harlem, WMCA, 1 h.

Educational Series Has Wide Appeal

The educational series entitled "Your Schools and You," presented over WEEI on Tuesdays at 5 for the past few weeks, is to be continued indefinitely. The broadcasts to date have been eminently successful, bringing to the microphone several of New England's outstanding educators. The formula for the program invites the attention of both children and adults, thus establishing a potential audience far greater than the ordinary specialized type of educational broadcast.

On Tuesday, December 11, Professor Kirtley Mather of Harvard University will be the featured speaker. The subsequent list of speakers for December month is not as yet complete.

"Your Schools and You" is designed to give parents and citizens a closer view of their schools. For this reason each of the broadcasts should be of definite value in helping the radio audience take stock of the educational opportunities open to the children of the community and state.

The local angle of the broadcasts is being handled by Frank F. Carr, principal of the John W. Weeks School of Newton Center, who, in collaboration with program director Arthur F. Edes of Station WEEI, has been the moving spirit behind educational programs of a similar nature over the same station in the past.

A tremendous fan mail has emphatically indicated the general appeal of the broadcasts which once more serve to place WEEI in the foreground with new and carefully planned educational effort.

She Tattles



MARJORIE DUNN, assistant editor to "Vic" WHITMAN on the WEEI early evening feature "The Evening Tattler"—a half hour of sense and non-sense at six o'clock.

Big Brother Emery Back On Network

Spreading the same cheerful philosophy which endeared him to so many thousands of New England listeners, Bob "Big Brother" Emery returns to the NBC-WEEI network weekly on Sunday mornings at 10:30 o'clock.

The weekly program feature brings him to the network audience in collaboration with the duo commonly referred to as radio's happiest couple—May Singhi Breen and Peter deRose under the sponsorship of Humphreys Homeopathic Medicine Company.

Career As Checkered As The Proverbial "Joseph's Coat"

Roland Winters Has Tramped Globe

A life as fascinating, eventful and glamorous as the most romantic and adventuresome bit of fiction, Roland Winters, popular master of ceremonies and comic of the equally popular I. J. Fox Sunday Night Parties in the Salle Moderne of the Hotel Statler, has had a career as checkered as the proverbial "Joseph's Coat of many colors." Now a radio performer, once an actor, Winters has been banker, stock broker, linen merchant, truck driver, taxi driver and sailor. Thirty full years has he had—from jaunting about the four corners of the globe in a tramp steamer to starring in Broadway productions with such celebrities as Frank Morgan, Edward G. Robinson, Florence Reed, Lyle Talbot, Beverly Bayne, and Joseph Schildkraut.

Roland was born in Boston, November 22, 1904, the youngest of three sons, of world famed parents. His father, Felix Winternitz, an Austrian, is one of the world's foremost violinists. His mother was one of the stars of the Berlin Imperial Opera. Left America as a baby, lived and was educated in Vienna and Berlin until seven years of age. Then he returned to America with the nickname, "Dutch," which he retained up to the time of the World War, when the nickname was changed to something we are not allowed to print. Had his schooling in Bos-



ROLAND WINTERS

ton at Boston Latin, tried to get into every well-known prep school in the country, but was so lazy and fresh none would take him. Finally he ended up at Hallock in the Berkshires . . . but not for long. Tutored privately for Harvard . . . but decided to run away to sea. After traveling about the seven seas in lumber schooners and tramp freighters as an A. B. Seaman, returned to America to go to art school. But, at art school, they "got on to him." So, against the wishes of his mother who wanted him to go to West Point, Winters ran away again. This time to New York to become an actor. Worked in some of Broadway's biggest productions for Lawrence Schwab, as well as

every stock company in these United States for a period of eleven years, interspersed with trips to sea. And when the bottom dropped out of the theatre, Roland turned to radio, and became an announcer. His present plans and ambitions include being a top-notch radio comedian and a return to the stage.

Of course, he's married. And he counts as vices, an uninterupted and whole-hearted laziness, and a love for sailing (at which he's exceedingly adept). He likes to fence, read philosophy and the literary classics to all hours of the morning, has been all over the world, has travelled back and forth between Europe and America over twenty odd times, speaks two foreign languages fluently and has more than a smattering of five others. If you're interested in epicurean delicacies, and in the most famous and reliable of the world's cuisines, Mr. Winters, as a connoisseur, is at your service.

MIKE CHATTER

Peg La Centra, diminutive contralto, another Bostonian to achieve the networks, is being featured on the Wrigley's Spearmint Toothpaste broadcasts over NBC-WEEI Sunday afternoons at 4:30.

Lennie Hayton, musical director of Fred Allen's Town Hall Tonight program, discovered and is fostering the career of Paul Barry, a western baritone.

Gift Specialties and Seasonal Suggestions

Recommended by THE CHRISTMAS SHOPPER

Caroline Cabot TEN A.M.

Each MONDAY WEDNESDAY and FRIDAY

Over Station WEEI The Friendly Station

NEWS WEEI BRIEFS

The spirited "Manhattan Merry-Go-Round" program returns to WEEI at seven o'clock weekly on Sundays beginning December 9th under the sponsorship of Dr. Lyons . . . Boss



Burton's pet fret of the past couple of years—the constant accumulation of excess poundage—has finally succumbed to a diet which allows no proteins, a complete absence of fats and nothing in the line of carbohydrates. He offers the comment that phantom meals are entirely too gamy . . . Deepest sympathy goes out to Robert Freeman in his sudden bereavement . . . The Edison "Friendly Kitchen Observer" is, as usual, up with the leaders for distinctiveness and novelty in weaving the seasonal influence into the three weekly narratives . . . The installation service of the First Radio Parish Church of America at the WEEI studios last Sunday was one of the most impressive ceremonies ever aired the country over. A capacity studio audience witnessed the program as guests of Rev. H. O. Hough, pastor . . . "The

Goofs" program, so aptly rechristened by its artists "Del, Jack, Ed and Ray," is now performing before a Saturday audience which writes in advance for the limited number of free admission tickets . . . That splendid Cleercoal air show moves to a new weekly spot on Thursdays at seven beginning the 13th . . . Dorothy Drake, the voice of C. Crawford Hollidge, is doing an outstanding job as narrator on "The Parade of Today," mornings at 10:30, which is in the nature of a daily style show mi-



nutely described and blended with musical interpolations . . . WCSH has joined with the other New England Network stations in presenting Neal O'Hara's feature sports broadcasts on Saturdays at seven o'clock . . . That Alka-Seltzer "Uncle Ezra" bit at 7:45 on Mondays, Wednesdays and Fridays is a top notch rural comedy . . . Joe Reisman and his Hotel Statler orchestra, an NBC band, will be heard over the Edison station Thursday and Fri-

day nights from 11:30 to midnight . . . The weekly "Road to Romany," featuring gypsy music, is inaugurated Sunday at two o'clock . . . Mrs. Endicott P. Saltonstall will speak on "The Christmas Festival of the Country Week" at 4:30 P.M. on Tuesday . . . Walter Leavitt's "Teddy Bears" are shooting for a West Indies Cunard cruise . . . Harry Reiser's orchestra with Ray Heatherton, soloist, begins a new Sunday series this week at 4:30 o'clock . . . WEEI has a "Book of Fencing" in its library—not word fencing . . . Fred Hawkins is week-ending in the vicinity of Shelburne Falls in search of venison . . . Ed Herlihy does a classy bit of a solo Saturday noons and who knows what may come of it . . . The Miller-Moore friendship has developed so rapidly that the lads anticipated the Xmas holiday by exchanging seasonal tokens of their respective esteem last week . . . Roy "Commercial" Marks is the station's beau brummel . . . Frank Gow is building nifty model airplanes.



The CLEERCOALERS

Andrew Jacobson and his Orchestra

THURSDAY EVENINGS at Seven O'Clock

A BRILLIANT 30 Minute MUSICAL SHOW

Over Station WEEI and the New England Network

CLEERCOAL Less Than A Barrel Of Ash To The Ton

Thursday, December 13 - Fred Waring on CBS-WABC at 9.30 P.M.

Highlights

- P.M.**
- 1.45—NBC Music Guild, Frank Black, NBC-WJZ
 - 3.00—N. Y. State Symphony Band, ABS-WMCA
 - 6.45—Lowell Thomas, NBC-WJZ
 - 7.45—Boake Carter, CBS-WABC
 - 8.00—Rudy Vallee, NBC-WEAF
 - 9.00—Show Boat, NBC-WEAF
 - Death Valley Days, NBC-WJZ
 - 9.30—Fred Waring's Pennsylvanians, CBS-WABC
 - Musical Keys, NBC-WJZ
 - 10.00—Paul Whiteman's Music Hall, NBC-WEAF
 - 10.30—"Economics in a Changing Social Order," NBC-WJZ

(All programs are listed in Eastern Standard Time. Central Time is one hour earlier.)

- 8.30 A.M. EST; 7.30 CT**
Cherido, WEAF WEEI WGY WLW WSM WFLA, 30 m.
Weather, WBZ
Salon Musicale, WABC, 27 m.
Georgia Wildcats, WHAS
Organ, WPG, 30 m.
- 8.45 A.M. EST; 7.45 CT**
Laud Trio and White, WJZ WBZ WHAM WBAL KDKA
Bob Atcher, WHAS
- 9 A.M. EST; 8 CT**
Organ Rhapsody, WEAF, 30 m.
Forest Willis, crooner, WGY
Breakfast Club, Jack Owens, tenor, The Three C's, WJZ WBZ, 1 h. (WHAM WFLA at 9.15) (WSM at 9.30) (KDKA, 30 m.)
Joe Emerson, WLW
Devotion, WSM
Birthday Club, WFLA
Sunny Side Up, WABC WCAU, 45 m. (WPG at 9.30)
- 9.15 A.M. EST; 8.15 CT**
Deane Moore, WEEI
Devotions, WGY
String Music, WLW
Organ, WSM
- 9.30 A.M. EST; 8.30 CT**
Danny Dec, WEAF
Little Jack Little, WGY
Styles, KDKA
Mail Bag, Home loan talk, WLW
Wildcats, WHAS
- 9.45 A.M. EST; 8.45 CT**
Old Plantation Days, WEAF
Musical program, WGY
News, WEEI
Sammy Fuller, KDKA
Jacksons, WLW
Waltz Time, WABC WPG WHAS WCAU
Jean Gravelle's Orchestra, WMCA
- 10 A.M. EST; 9 CT**
News, Johnny Marvin, tenor, WEAF WEEI WGY
Josephine Gibson, WJZ WBZ KDKA WSM
Radiograms, musical program, WHAM
Rhythm Jesters, WLW
News, Bluebirds, trio, WABC WCAU
News, Home Hour, WPG, 1 h.
- 10.15 A.M. EST; 9.15 CT**
Clara, Lu 'n' Em, WEAF WEEI WGY WLW WSM WGN
Edward MacHugh, WJZ WBZ KDKA
Fashion talk, WFLA
Bill and Ginger, WABC WCAU
University of Kentucky-University of Louisville, debate, WHAS, 45 m.
- 10.30 A.M. EST; 9.30 CT**
Morning Parade, WEAF, 45 m. (WGY, 10.45-11) (WEEI, 10.35-11) (WSM, 15 min.)
Market Basket, WGY
Today's Children, WJZ WBZ KDKA WFLA
Stocks, news, WLW
Orientale, WABC WCAU
Morning Concert, WNBX
- 10.45 A.M. EST; 9.45 CT**
News, Radio Kitchen, WJZ WHAM KDKA WSM
News, musical, Highway safety talk, WBZ
Jack Berch's Orchestra, WLW
Ray Perkins, WFLA
Ida Bailey Allen, WABC
Tenor, WGN
Sporting News, WNBX
- 11 A.M. EST; 10 CT**
Galaxy of Stars, WGY WGN WTAM WLW
Hazel Arth, contralto, WJZ WHAM KDKA WFLA
Curley Joe, WBZ
String Ensemble, WSM
Betty Barthell, WABC WPG
Mary Lee Taylor, WHAS
Variety program, WNBX
- 11.15 A.M. EST; 10.15 CT**
Frances Lee Barton, WEAF WEEI WGY WLW
Tony Wons, WJZ WBZ WHAM KDKA WSM WFLA
Academy of Medicine, WABC WPG WCAU
World Affairs, WNBX
- 11.30 A.M. EST; 10.30 CT**
Pedro Via's Orchestra, WEAF, 30 m. (WEEI, 25 m.)
High Priests of Harmony, WGY
U. S. Navy Band, WJZ WBZ WHAM WSM, 30 m. (KDKA WLW at 11.45) (WFLA, 15 m.)
Frances Ingram, KDKA
Hollywood Country Church, WABC WCAU WPG KMOX, 30 m.
Dream Doctor, WHAS
Household Chat, WNBX
- 11.45 A.M. EST; 10.45 CT**
Banjoleers, WGY
Agricultural talk, WFLA
News Week, WNBX
- 12 NOON EST; 11 A.M. CT**
Gould and Shetter, pianists, WEAF WEEI WGY WLW
Fields and Hall, WJZ WHAM KDKA WSM
Weather, Monitor Views News, WBZ, 30 m.
Noonday Varieties, WFLA
Voice of Experience, WABC WCAU WHAS WBBM KMOX

- Home Sweet Home, WPG
Current Events, WOR
Bob Fallon's Orchestra, WMCA, 30 m.
C. Houston Goodins, WGN
Bob Neal, WNBX
- 12.15 P.M. EST; 11.15 A.M. CT**
Honeyboy and Sassafras, WEAF WEEI
Vagabonds, WGY
Merry Macs, WJZ WHAM KDKA WSM
Livestock reports, WLW
The Gumps, WABC WHAS WBBM KMOX
Chansonette, WPG
Hal Beckett, organ, WOR
Bob Forsans, tenor, WGN
Andrea Gooslyn, WNBX
- 12.30 P.M. EST; 11.30 A.M. CT**
Merry Madcaps, Norman L. Cloutier's Orchestra, WEAF, 30 m.
Stocks, produce markets, WEEI
WGY Farm Program, WGY, 30 m.
National Farm and Home Hour, WJZ WBZ WHAM KDKA WSM WFLA, 1 h. (WLW at 12.35)
River, markets, WLW
George Hall's Orchestra, WABC WCAU WPG WHAS WBBM KMOX
Dance Orchestra, WOR, 30 m.
Betty Jayne, songs, WMCA
Markets, Good Health and Training, WGN
Melody Moments, WNBX
- 12.45 P.M. EST; 11.45 A.M. CT**
This and That, WEEI, 30 m.
University of Kentucky, WHAS
Will Hollander's Orchestra, WMCA, 30 m.
- 1 P.M. EST; 12 NOON CT**
Market and Weather Reports, WEAF
Jan Bruneseo's Orchestra, WGY, 30 m. (WEAF WEEI, 1.15)
Samuel de Jong's Orchestra, WABC WCAU WHAS
Hotel Marlon Music, WPG, 30 m.
Leo Freudberg's Orchestra, WOR, 30 m.
Just Plain Bill, WGN
- 1.15 P.M. EST; 12.15 CT**
Frank Dailey's Orchestra, WABC WPG, 30 m.
- 1.30 P.M. EST; 12.30 CT**
Airbreaks, WEAF WEEI, 30 m. (WGY, 15 m.)
Vic and Sade, WJZ WBZ WLW WFLA
Rochester School of the Air, WHAM
Orchestra, KDKA
Markets, WSM
Story Behind the Song, WABC WCAU WBBM
Theatre Club, WOR
Markets, Midday Service, WGN
- 1.45 P.M. EST; 12.45 CT**
Southerners, WGY
Music Guild, Frank Black, director, WJZ WSM KDKA WFLA, 45 m. (WBZ at 2)
N. E. Agriculture, WBZ
Jan Carlson's Orchestra, WHAM, 30 m.
Orchestra, KDKA
Dance Tunes, WLW
Art Kassel's music, WABC WBBM KMOX
Ethebert Nevin's Music, WHAS
Leola Lewis, contralto, WPG
Studio Orchestra, WOR
Palmer House Ensemble, WGN
- 2 P.M. EST; 1 CT**
Stones of History, dramatic program, WEAF, Pure Food Institute, WEEI
Paul Curtis, tenor, WGY
Ohio School of the Air, WLW, 1 h.
Marie, The Little French Princess, WABC WCAU WBBM KMOX
Trio, WPG, 30 m.
University of Kentucky, WHAS
Dr. A. E. Payne, WOR
Ragamuffins, WMCA
Ensemble, WGN
- 2.15 P.M. EST; 1.15 CT**
Household Chats, WGY
Rochester School of the Air, WHAM
Romance of Helen Trent, WABC WCAU
Memories, WOR
Adventures in Melody, WMCA
- 2.30 P.M. EST; 1.30 CT**
Vaughn de Leath, songs, WEAF WGY
Silver Lining Hour, WEEI
Home Sweet Home, WJZ WHAM WSM WFLA
Cooking School, WBZ, 30 m.
KDKA Home Forum, KDKA, 30 m.
School of the Air, WABC WPG, 30 m.
Martha Deane, WOR, 30 m.
Roads of Romance, WMCA, 30 m.
Jongleurs, WGN
Afternoon Concert, WNBX
- 2.45 P.M. EST; 1.45 CT**
Vic and Sade, WEAF WEEI WGY
Joe White, tenor, WJZ WHAM WSM WFLA
Rube Appleberry, WGN
- 3 P.M. EST; 2 CT**
Ma Perkins, WEAF WEEI WGY WLW WSM
Castles of Romance, WJZ WBZ WHAM WFLA
State Federation Pa. Women, KDKA
Roadways of Romance, WABC WPG WCAU, 1 h.
Afternoon Musical Revue, WOR, 30 m.
N. Y. State Symphony Band, WMCA, 1 h.
Ensemble, WGN
Afternoon Concert, WNBX
- 3.15 P.M. EST; 2.15 CT**
Dreams Come True, WEAF WEEI WGY WLW WSM
Rochester Philharmonic Orchestra, Werner Janssen, conductor, WJZ WBZ WHAM KDKA, 45 m. (WSM at 3.30) (WFLA, 30 m.)
Jongleurs, WGN
- 3.30 P.M. EST; 2.30 CT**
Woman's Radio Revue, WEAF WEEI WGY 30 m.
"Song of the City," WLW
Karl Freud, WOR
Home Management talk, WGN
News Oddities, WNBX
- 3.45 P.M. EST; 2.45 CT**
Bond of Friendship, WLW
Ed Jordan, WOR
Musical, WGN, 30 m.
Recordings, WNBX
- 4 P.M. EST; 3 CT**
Blue Room Echoes, WEAF WSM WFLA, 30 m.
Stocks, WEEI
Betty and Bob, WGY WJZ WBZ WHAM KDKA
Life of Mary Sothern, WLW
The Little House Family, WABC WPG
Silver Strains, WOR
Sports Review, WMCA, 1 h.
Mark Love, bass, WGN
Our Jimmy, WNBX
- 4.15 P.M. EST; 3.15 CT**
Esta Fidman, violinist, WEEI
Limy Bill, WGY
Sisters of the Skillet, WJZ WBZ WHAM KDKA



ROSEMARY LANE is the comely singer with FRED WARING's Orchestra which broadcasts over the CBS-WABC network Thursdays at 9.30 P. M.

- Jeannine Macy's Orchestra, WLW
Salvation Army Band, WABC WPG
Pianist, WOR
Organ, WGN
- 4.30 P.M. EST; 3.30 CT**
Arlene Jackson, songs, WEAF
Strings of Harmony, WEEI
Contraalto, WGY
Platt and Nierman, piano duo, WJZ WSM WFLA (WHAM at 4.35)
Edwin Otis, baritone, WBZ
Betty and Bob, WLW
Markets, KDKA
Dick Messner's Orchestra, WABC WHAS WPG, 30 m.
Jerry Blaine's Orchestra, WOR
Blue Moments, WGN
Organ Reveries, WNBX
- 4.45 P.M. EST; 3.45 CT**
Lady Next Door, WEAF
Stocks, WGY
Sam Curtis' Radio Chat, WEEI
Vera Brittain, "Youth and War," WJZ WBZ
Stamp Club, WHAM
Business News, WLW
"Science in Your Home," WOR
- 5 P.M. EST; 4 CT**
National Congress of Parents and Teachers Program, WEAF WEEI WSM, 30 m.
Jack and Jill, WGY
Stanleigh Malotte, WJZ KDKA
Monitor Views News, WBZ
Jolly Roger, WHAM
Donald Ayer's Adventures, WLW
Dixians, WFLA, 30 m.
Loretta Lee, songs, WABC WPG KMAX
Current Events, WOR
"Aperitif," WMCA, 30 m.
Soprano, WGN
- 5.15 P.M. EST; 4.15 CT**
Smiling Ed McConnell, WGY
Three Scamps, WJZ
Markets, WBZ
Uncle Wiggily, WHAM
Kiddies' Klub, KDKA
Tim Healy, WLW
"Skipper," WABC KMOX
Pete Rice, Western drama, WOR
Popular Rhythm, WGN, 30 m.
- 5.30 P.M. EST; 4.30 CT**
Rooster Gazette, drama, WEAF WSM
Santa Claus, WEEI
Uncle Wiggily, WGY
Singing Lady, Nursery Rhymes, songs, stories, WJZ WBZ WHAM KDKA WLW
Gypsies, WFLA
Jack Armstrong, All-American Boy, WABC WCAU
Cecilia E. Norcross, WPG
Out of the Dusk, WHAS, 30 m.
Cocktail Hour, WOR
Sally's Party, WMCA, 30 m.
- 5.45 P.M. EST; 4.45 CT**
Jesters trio, WEAF
Buddy and Blake, WEEI
Musical Program, WGY
Little Orphan Annie, WJZ WBZ WHAM KDKA WFLA
Jack Armstrong, WLW
Financial News, WSM
"Robinson Crusoe, Jr.," WABC WCAU
Miniatures, WPG WBBM
Uncle Wiggily, WOR
Joseph Hassmer, songs, WGN
- 6 P.M. EST; 5 CT**
Xavier Cugat's Orchestra, WEAF, 30 m.
The Evening Tattler, WEEI, 30 m.
High Priests of Harmony, WGY
Jimmy Allen's Air Adventures, WBZ
William Lundell interviews, WJZ
Sports, WHAM
String Ensemble, WSM
Paul Pierson's Orchestra, WLW
Musical Memories, WFLA, 30 m.
Buck Rogers, WABC WCAU
Sanders Sisters, WHAS
Pianist, WBBM
Uncle Don, WOR, 30 m.
Current Books, WMCA
Melody Moments, WGN

STATION DIRECTORY Page 4

- 6.15 P.M. EST; 5.15 CT**
Jimmy Allen's Air Adventures, WGY
Tom Coakley's music, WJZ WBZ
Comedy Stars of Hollywood, WHAM
KDKA Orchestra, KDKA
Bachelor of Song, WLW
Three on a Mike, WSM
Bobby Benson, Sunny Jim, WABC
"Skipper," WHAS WBBM KMOX
Investment Service, Blaine's Orchestra, WMCA
- 6.30 P.M. EST; 5.30 CT**
News, Mary Small, WEAF
Rhyming Reporter, news, WEEI
News, Brevities, WGY
News, Armand Girard, bass, WJZ KDKA WFLA
News, weather, WBZ
Pleasure Cruise, WHAM
Bob Newhall, WLW
Freddy Rose, piano, WSM
Joe Haymes' Orchestra, WABC WCAU
Jack Armstrong, WBBM KMOX
Fireside Reveries, WHAS
Dance orchestra, WOR, 30 m.
Round up, WMCA
Singing Lady, WGN
- 6.45 P.M. EST; 5.45 CT**
Billy Bachelor, WEAF WEEI WGY WTAM
Lowell Thomas, WJZ WBZ WHAM KDKA WLW
Little Orphan Annie, WSM
Radio Special, WFLA
Connie Gates, songs, Margaret Brainard, WABC WHAS (News at 6.55)
Hymn Reveries, WMCA
Little Orphan Annie, WGN
- 7 P.M. EST; 6 CT**
Richard Himber's Orchestra, WEAF WGY
Andrew Jacobson's Orchestra, WEEI, 30 m.
Amos 'n' Andy, WJZ WBZ WHAM KDKA WBAL WLW WFLA
Tennessee Educational Committee, WSM
"Myrt and Marge," WABC WCAU
Weather Report, the Cross Roads, WHAS
Dan Russo's Orchestra, WBBM
Ford Frick, sports, WOR
Gloria Grafton, WMCA
Jimmy Allan, WGN
- 7.15 P.M. EST; 6.15 CT**
Gems of Melody, WJZ WBZ WHAM KDKA, 30 m.
Lum and Abner, WLW
Three on a Mike, WSM
Just Plain Bill, WABC
Comedy Stars, WOR
Silver-Voiced Lovers, WMCA
Palmer House Ensemble, WGN
- 7.30 P.M. EST; 6.30 CT**
Minstrel Show, Burnt Cork Dandies, Al Bernard, Paul Dumont, WEAF, 30 m. (WGY 15 m.)
After Dinner Review, WEEI
Smilin' Ed McConnell, WLW
Asher and Little Jimmie, WSM
Cavaliers, WFLA
The Troopers, WABC WCAU
Buck Rogers, WHAS WBBM KMOX
Larry Taylor, baritone, WOR
Folk Singer, WMCA
Dance Orchestra, WGN
- 7.45 P.M. EST; 6.45 CT**
Big Freddie Miller, WEEI
Vagabonds, WGY
Shirley Howard, songs, WJZ WBZ KDKA
On Wings of Song, WHAM, 30 m.
Unbroken Melodies, WLW
Forty-Niners, WSM
Adventures, WFLA
Boake Carter, WABC WCAU WHAS WBBM KMOX
Dance Music, WOR
George Reid, WMCA
Ensemble, WGN
- 8 P.M. EST; 7 CT**
Rudy Vallee's Variety Hour, Connecticut Yankees, guest performers, WEAF WEEI WGY WLW WSM WFLA, 1 h.
Readings, James Stephens, poet and novelist, WJZ KDKA, 30 m.
Underneath Your Balcony, WBZ
Easy Aces, WABC WBBM KMOX
Troopers, WCAU WPG WHAS
Little Symphony Orchestra, Philip James, conducting, Chandler Goldthwaite, pianist, WOR, 1 h.
Hal Rous's Orchestra, WMCA
Prof. Stuart P. Meech, WGN
- 8.15 P.M. EST; 7.15 CT**
Jaysword Sisters, WBZ
Adventures of Jimmy Allen, WHAM
Fray and Braggiotti, WABC WPG
Hymn Sing, WHAS
Five-Star Final, WMCA
Dance orchestra, WGN
- 8.30 P.M. EST; 7.30 CT**
Charles Sears, tenor, Ruth Lyon, soprano, WJZ WHAM KDKA, 30 m.
"Laws that Safeguard Society," WBZ
Edwin C. Hill, WABC WCAU WHAS WBBM KMOX, 30 m. (WPG, talk, 5 m.)
Serenade, WMCA, 30 m.
Bridge talk, WGN
- 8.45 P.M. EST; 7.45 CT**
Edmund Boucher, basso, WBZ
Charlie Agnew's Orchestra, WGN
- 9 P.M. EST; 8 CT**
Captain Henry's Show Boat, Lanny Ross, Frank McIntyre, Muriel Wilson, Conrad Thibault, Molasses 'n' January, WEAF WEEI WGY WSM WFLA, 1 h.
Death Valley Days, drama, Tim Frawley, Joseph Bell, Joseph Bonime's Orchestra, WJZ WBZ WHAM KDKA WLW, 30 m.
Glen Gray's Orchestra, Annette Hanshaw, Walter O'Keefe, WABC WCAU WHAS WPG WBBM KMOX, 30 m.
"Housewarming," WOR, 30 m.
Mauro Cottone, WMCA, 45 m.
Lawrence Salerno's music, WGN, 30 m.

- Police Radio**
- | Station | Kc. | Location |
|---------|------|----------------------|
| KGHO | 1682 | Des Moines, Iowa |
| KGHZ | 2406 | Little Rock, Ark. |
| KGPB | 2430 | Minneapolis, Minn. |
| KGPO | 2450 | Tulsa, Okla. |
| WBA | 190 | Harrisburg, Pa. |
| WPDB | 1712 | Chicago, Ill. |
| WPDE | 2442 | Louisville, Ky. |
| WPKD | 2450 | Milwaukee, Wis. |
| WPDV | 2458 | Charlotte, N. C. |
| WPDY | 2414 | Atlanta, Ga. |
| WPDW | 2422 | Washington, D. C. |
| WPEC | 2466 | Memphis, Tenn. |
| WPEK | 2430 | New Orleans, La. |
| WPHH | 2414 | Baltimore, Md. |
| WPFK | 2430 | Hackensack, N. J. |
| WPFM | 2382 | Birmingham, Ala. |
| WPFZ | 2442 | Miami Beach, Fla. |
| WPGC | 1658 | S. Schenectady, N.Y. |
| WPGG | 1682 | Findlay, Ohio |
| WPHF | 2450 | Richmond, Va. |
| WPHI | 2490 | Charleston, W. Va. |
| WRDS | 1642 | East Lansing, Mich. |
- 9.30 P.M. EST; 8.30 CT**
Musical Keys, Cyril Pitts, tenor, WJZ WBZ WHAM KDKA WBAL, 30 m.
Unsolved Mysteries, WLW, 30 m.
Fred Waring's Pennsylvanians, WABC WCAU WPG WHAS WBBM KMOX, 30 m.
Lum and Abner, WOR WGN
- 9.45 P.M. EST; 8.45 CT**
Jan Garber's Orchestra, WOR WGN
Tony Cabooch, WMCA
- 10 P.M. EST; 9 CT**
Paul Whiteman's Music Hall, WEAF WEEI WGY WLW WSM WFLA, 1 h.
Roads that Move; Montreal Concert Orchestra, direction Howard Fogg, WJZ KDKA WHAM, 30 m.
Sammy Liner's Orchestra, WBZ, 30 m.
Music, WHAM (news at 10.20)
"Forty-Five Minutes in Hollywood," WABC WCAU WBBM KMOX, 45 m.
Nick Nickerson, songs, WPG
Studio Orchestra, WHAS, 30 m.
William Larkin, tenor, WOR
Hockey Games, WMCA, 45 m.
- 10.15 P.M. EST; 9.15 CT**
Aldrich's Hawaiians, WPG, 30 m.
Current Events, WOR
WGN Orchestra, WGN
- 10.30 P.M. EST; 9.30 CT**
Economics in a Changing Social Order, M. H. Aylesworth, NBC President, Nicholas Murray Butler, Norman Thomas, Glenn Frank, Prof. Millis, WJZ WBZ WHAM KDKA, 30 m.
Dance Orchestra, WOR, 30 m.
Earl Burnett's Orchestra, WGN
- 10.45 P.M. EST; 9.45 CT**
"Fats" Waller's Rhythm Club, WABC
Ray Sears, songs, WPG
University of Louisville, WHAS
Jolly Russians, WMCA
Dance orchestra, WGN
- 11 P.M. EST; 10 CT**
Colonel Ralph Isham, WEAF
Weather, Current Events, WEEI
King's Men, WGY
Enric Madriguera's Orchestra, WJZ WBAL WFLA, 30 m.
Weather, WBZ
Tommy Tucker's Orchestra, WHAM, 30 m.
Uncle Tom and Betty, KDKA
Zero Hour, WLW, 30 m.
Amos 'n' Andy, WSM
Talk, Little Jack Little's Orchestra, WABC WCAU, 30 m. (WPG WBBM at 11.15)
Weather, 5-Star Final, WPG
Myrt and Marge, WHAS WBBM KMOX
Weather, Current Events, WOR
Voice of Romance, WMCA
Dudley Crafts Watson, WGN
- 11.15 P.M. EST; 10.15 CT**
Organ, Jesse Crawford, WEAF WEEI WSM
Charles Boulanger's Orchestra, WGY
Joe Rines' Orchestra, WBZ
William Penn's Orchestra, KDKA, 30 m.
Weather, orchestra, WHAS
Moonbeams, WOR
Sleepy Hall's Orchestra, WMCA
Dream Ship, WGN
- 11.30 P.M. EST; 10.30 CT**
Dorsey Brothers' Orchestra, WEAF WEEI WGY, 30 m.
Eddie Duchin's Orchestra, WJZ WBZ WHAM WFLA, 30 m. (KDKA at 11.45)
400 Club, KDKA, 30 m.
Stan Stanley's Orchestra, WLW, 30 m.
Wagon Wheel Orchestra, WSM, 30 m.
Clyde Lucas' music, WABC WPG WBBM
Dream Doctor, Peter Riccardi, WHAS, 30 m.
Will Osborne's Orchestra, WOR, 30 m.
Charlie Davis' music, WMCA, 30 m.
Wayne King's music, WGN
- 12 MIDNIGHT EST; 11 P.M. CT**
Del Campo's Orchestra, WEAF WEEI WGY 30 m.
George Olsen's Orchestra, WJZ WBZ KDKA WFLA WSM, 30 m.
Eddie Laughton's Orchestra, WLW, 30 m.
Dance Orchestra, WOR, 30 m.
Al Kavelin's Orchestra, WABC, 30 m.
- 1 A.M. EST; 12 MIDNIGHT CT**
Claude Hopkins' Orchestra, WABC, 30 m.

After the Theatre
Barbeued Chicken
In a quiet nook at
SLADES BARBECUE
958 Tremont St.—967 Tremont St.
435 Columbus Ave.
BOSTON, MASS.
Open All Night

The Casa Loma, Incorporated, Pays Dividends Like A Big Business

Princeton And Prince Made Them

By HILDA COLE

Whenever those noted connoisseurs of rhythm, undergraduates of universities and colleges from Princeton to Vassar to Stanford begin to rhythm-worship a band, its fortune is made overnight.

That's what happened to the Casa Loma Orchestra. After one chance engagement, three years ago, at a Princeton prom, they were started off to blaze a sudden trail of glory in syncopation.

Now every tune they add to their repertoire is greeted with campus comment. And, since those likeable and approachable young musicians have exchanged a few words personally with practically every collegian who blows into New York for a visit, and with undergraduates at whose proms and parties they play, they have first-hand information on the tunes which please the musical palates of their listeners.

If you should ever drop into the Essex House in New York, whence the Caravan broadcasts emanate, you would be apt to see the entire Casa Loma outfit chatting at various tables around the dance floor during intermissions.

A Brief History

The history of the band's journey to success is brief, but packed with action. If the Prince of Wales had not cancelled a plan for one of his visits to Canada, several years ago, there probably never would have been a Casa Loma Orchestra.

The Canadians, anticipating a visit from their popular Prince, built a lavish residence in Toronto, and named it Casa Loma. But when the Prince's visit was delayed indefinitely, they decided that some profitable use would have to be made of their white elephant of a castle. It was too big for a private home. It was too expensive a place for a club. So they decided that it was to become an hotel.

A bunch of boys who organized in Detroit in 1928 as "The Orange Blossom Orchestra" were hired to make music and lure customers.

The boys "clicked" locally, but the venture was unsuccessful financially, so the "Orange Blossom

Organiser



GLEN GRAY, who his band-mates call "Spike," and who is the business man of the Casa Loma, Inc.

Orchestra" had to find itself another engagement.

Some of the boys were discouraged. They were tired of working for one leader after another, rolling stones playing their instruments in the reflected glory of a "name" band leader. There seemed to be no future in it for any of them.

It was GLEN GRAY, saxophone player, known to them as "Spike," who spoke up with the idea which has made Casa Loma Orchestra a smooth-running organization.

Casa Loma, Inc.

"Why not incorporate?" suggested GLEN. "We'll run it like a business organization, with all of us as stockholders. It won't be one man's band, and we'll all be personally responsible for it." That seemed a sound idea.

They left the hotel in Ontario with its name as their tag—Casa Loma Orchestra. Their business set-up was complete, with GLEN GRAY unanimously elected president.

The following rules were made: Drinking on the job would cost the offending member \$50 (nobody has been guilty in three years), to miss a rehearsal without leave, \$25, and being late on the job, another \$25.

The enthusiasm of the boys

knew no bounds. They rehearsed until they were ready to drop from weariness. For a few months their engagements were slow, but they pulled together toward the objective of creating an individual style, and a manner of musical team work that would make their performances nearly flawless.

They spent their last pennies to buy new outfits and gasoline to arrive in the East to play at the Princeton Prom. There they "wowed" the prom-trotters, and similar success in ensuing engagements won them a contract at the Glen Island Casino, near New York.

They Go On The Air

It was from the bandstand of the Casino that they first broadcast over the Columbia Broadcasting System, using the haunting theme song, "Smoke Rings," composed by a member of the band, GENE GIFFORD.

There the Casa Loma boys "packed 'em in" and their melodies, traveling over the airwaves, met with public favor. In a few weeks, fan mail revealed that they were one of the most popular bands on the air.

The Casa Loma Orchestra, Inc., has been able to pay its owners

This and That

(Continued from Page 1)

ing in the American Academy in Rome.

In Europe he was summoned hither and yon to guest conduct a number of outstanding orchestras, one of them being in Finland where the eminent composer SIBELIUS heard him and shed tears of joy over JANSSEN's interpretation of his music.

I would like to believe that artistically Mr. JANSSEN fully merits the laurels that have been hung about his youthful neck.

But I have my doubts. Certainly I have heard less monotonous, although less precise, readings of SIBELIUS than the one JANSSEN gave; I have heard more delicate performances of HAYDN than the one which served to introduce JANSSEN to the radio audience.

However, JANSSEN is a young man—a conductor seldom reaches full artistic maturity until he is in his fifties—and he has talent.

It may be that one day he actually will merit the blaring encomiums he already has been accorded.

Husky-Voiced



ANNETTE HANSHAW, low-voiced songstress who sings with the Casa Loma band on the Caravan program.

and members dividends that would make many a stockholder pipped with envy. They have invested their profits.

The investments include the hiring of a combination "prop" man and common valet. He sends their shirts to the laundry, shines their shoes and runs errands. He is also their most particular critic.

The Casa Loma outfit also owns a big van, which transports the instruments for special engagements.

In addition to this, they have a large music library, and a special set on which their radio pro-

grams are recorded so they can "hear themselves as others hear them."

When, and if, new musicians are hired into the band it must be with a common approval of all the boys and with a consideration of their personalities as well as their talent as musicians.

Canadians Gain 45,000 Radio Sets

By The MICROPHONE'S Special Washington Correspondent

A gain of 45,000 in the number of radios licensed at the \$2 annual fee during the six months from April to September, was reported by the Canadian Department of Marine, mirroring better times in Canada.

The total number of licenses issued during that period was 548,249.

New Station For Boston

Boston by February 1 will have another full time station in operation. The new transmitter has been applied for by JOSEPH M. KIRBY, whose application came before the Radio Commission on December 6. According to *Variety*, KIRBY is affiliated with the Democratic State Committee that recently elected JAMES M. CURLEY as Governor of Massachusetts.

Free Press to be Discussed

The importance of the free press will be stressed by ELISHA HANSON, attorney for the American Newspaper Publishers' Association, during a broadcast over the NBC-WJZ network at 10 P. M. on Wednesday, December 12.

Short Wave Directory

Station	Metres	Location	Time (E.D.T.)
GSG	16.86	Daventry, England	6 to 7.30 A. M.
FYA	19.68	Pontoise, France	7.30 to 11.00 A. M.
PJC	19.71	Hilversum, Holland	8.30 to 10.30 A. M.
DJB	19.73	Zeesen, Germany	8 to 11.30 A. M.
GSP	19.82	Daventry, England	6 to 9 A. M.
HVJ	19.84	Vatican City, Rome	5-5.15 A. M. (Sat. 10)
RNE	25.00	Moscow, U. S. S. R.	6-7, 10-11 A. M. (Sun.)
FYA	25.20	Pontoise, France	11.15 A. M. to 6 P. M.
GSE	25.28	Daventry, England	9.15 to 10.45 A. M.
GSD	25.55	Daventry, England	1 to 5 P. M.
LSX	28.98	Buenos Aires, Byrd relays	8-10 P. M., Tues., Wed.
EAQ	30.40	Madrid, Spain	5.15-7 P. M. (Sat. 12-2)
CT1AA	31.25	Lisbon, Portugal	4.30 to 7 P. M.
HBL	31.27	Geneva, Switzerland	5.30-6.15 P. M., Sat.
VK2ME	31.29	Sydney, Australia	12 Noon to 10 A. M., Sun.
VK3LR	31.30	Melbourne, Australia	3 to 8 A. M.
DJA	31.38	Zeesen, Germany	5.15 to 9.15 P. M.
VK3ME	31.55	Melbourne, Australia	5 to 6.30 A. M., Wed.; 5 to 7 A. M., Sat.
GSB	31.55	Daventry, England	1 to 5.45 P. M.
OA4AC	38.36	Lima, Peru	9 to 11 P. M.
HBP	38.47	Geneva, Switzerland	5.30 to 6.15 P. M., Sat.
HJ3ABD	40.55	Bogota, Colombia	6.30 to 11 P. M.
HC2RL	45.00	Guayaquil, Ecuador	5.45 to 8 P. M., Sun.; 9.15 to 11.45 P. M., Tues.
PRADO	45.31	Riobamba, Ecuador	9 to 11.40 P. M., Thurs.
HJ1ABB	46.51	Barranquilla, Colombia	5 to 10 P. M.
YV3RC	48.78	Caracas, Venezuela	4.30 to 9.30 P. M.
YV2RC	48.00	Army Aircraft	Evening—irregularly
YV5RMO	49.08	Caracas, Venezuela	5.15 to 10 P. M.
CP5	51.28	Maracaibo, Venezuela	5.30-10 P. M.
HIX	49.34	La Paz, Bolivia	6.30-10 P. M., irreg.
DJC	49.50	Santo Domingo	8.10-10.10, Tues., Fri.
GSA	49.83	Zeesen, Germany	5.30 to 10.45 P. M.
HJ1ABG	49.75	Daventry, England	5 to 8 P. M.
XEBT	49.87	Barranquilla, Colombia	6.15 to 10 P. M.
COC	49.90	Mexico City	6 P. M. to 1 A. M.
RV59	50.00	Havana, Cuba	4 to 6 P. M.
HJ4ABA	51.49	Moscow, U. S. S. R.	2-6 P. M.
HCJB	75.00	Colombia, S. A.	1-2 P. M.
67.87 to 73.17		Quito, Ecuador	7.30-9.45 P. M.
KFZ	45.34, 31.57, 25.36, 23.19, 25, 17, 14 and 33	All Ships	Heard irregularly

NOTE: All times given are week-day schedules, unless indicated otherwise. The stations listed are regular broadcasters at the times indicated. Other stations which you may hear or which are used for international telephone have been purposely omitted.

Heifetz Suggests Radio Improvements

(Continued from Page 1)

ure to bring you this hour, or half-hour, of music.

"In that way the sponsors get the name of their product before the public without irritating both the artists taking part in the program and the audience with excessive advertising."

About another idea he has regarding the improvement of radio, JASCHA HEIFETZ is particularly earnest.

He believes that after the performance of each composition in an hour's program there should be two minutes of silence.

"The audience at a concert hall has a few minutes after each piece to think over and talk over with friends the music it has just heard," Mr. HEIFETZ said.

"The radio audience should

have the same opportunity for mental and spiritual digestion of the music.

"After all, I believe that the radio audience wants to form its own opinions about music; it does not want to be told what to think by an announcer or commentator.

"I am told that this plan for two minutes silence is not a practical one, that members of the radio audience will turn off their sets during the silence.

"I don't agree, particularly if the announcer says before each piece of music is played that at its conclusion there will be two minutes of silence.

"They also told me before the first concert I gave on the radio that it would not be ad-

visible to tune my violin in front of the microphone. The audience wouldn't want to hear me do it.

"Again I thought differently and insisted on doing it. Now almost every violinist tunes his fiddle in front of the microphone."

Mr. HEIFETZ is firmly convinced that no artist should play down to a radio audience.

He spoke with emotion of his trip to Russia last season after an absence from his native land of some 17 years.

"The audiences that I played to there are the most exciting I have ever known.

"They were the kind of audiences that made me forget that I was tired or uncomfortable and made me play almost better than I knew how."

Friday, December 14 - Frances Perkins over NBC-WJZ at 10.30 P.M.

Highlights

- P.M.
3.00—U. S. Marine Band, NBC-WJZ
Philadelphia Orchestra, CBS-WABC
8.00—Concert, Jessica Dragonette, NBC-WEAF
Irene Rich, NBC-WJZ
8.30—True Stories, CBS-WABC
9.00—Waltz Time, NBC-WEAF
9.30—Hollywood Hotel, CBS-WABC
Phil Baker, NBC-WJZ
10.00—Minstrel Show, Theo Karle, NBC-WJZ
First Nighter, NBC-WEAF
10.30—Frances Perkins, "Social Reorganization for Security," NBC-WEAF

(All programs are listed in Eastern Standard Time. Central Time is one hour earlier.)

- 6.30 A.M. EST; 5.30 CT
Fur Trapper's information, WGY (6.40-6.45)
Top of the Morning, WLW, 30 m.
6.45 A.M. EST; 5.45 CT
Health Exercises, WEAF WEEI WGY, 1 h.
7 A.M. EST; 6 CT
Musical Clock, WBZ KDKA, 1 h.
Prayer, WLW
7.15 A.M. EST; 6.15 CT
Devotion, WLW
World Observer, WNBX
7.30 A.M. EST; 6.30 CT
Yoichi Hiraoka, xylophonist, WJZ
The Texans, WLW
Rise and Shine, WSM, 1 h.
Breakfast Rhythm, WFLA, 30 m.
Organ, WABC, 30 m.
7.45 A.M. EST; 6.45 CT
Pollock and Lawnhurst, WEAF WEEI
Musical program, WGY
Jolly Bill and Jane, WJZ
Jack Foy, songs, WHAM
Plantation Days, WLW
8 A.M. EST; 7 CT
Bradley Kincaid, songs, WEAF WLW
Weather, Current Events, WEEI
Musical Clock, WGY, 30 m.
Devotions, WJZ WBZ KDKA WFLA
Kindly Thoughts, WHAM
Song Reporter, WABC, 25 m.
8.15 A.M. EST; 7.15 CT
Don Hall Trio, WEAF WLW
William Meeder, organ, WJZ WHAM
KDKA, 30 m. (WBZ WFLA, 15 m.)
8.30 A.M. EST; 7.30 CT
Cheerio, J. Harrison Isles, musical director, WEAF WEEI WGY WLW WSM WFLA, 30 m.
Weather, WBZ
Raymond Scott, pianist, WABC
Wildcats, WHAS
Organ, WPG, 30 m.
8.45 A.M. EST; 7.45 CT
Lant Trio and White, WJZ WHAM
KDKA
Eton Boys, WABC
Bob Atcher, WHAS
9 A.M. EST; 8 CT
Organ Rhapsody, WEAF, 30 m. (WGY, 15 m.)
Breakfast Club, Jack Owens, tenor, the Ranch Boys, Don McNeill, WJZ WBZ, 1 h. (KDKA, 30 m.) (WSM at 9.30) (WFLA at 9.15)
Joe Emerson, WLW
Devotion, WSM
Birthdays Club, WFLA
Metropolitan Parade, WABC WCAU WHAS, 45 m. (WPG at 9.30)
9.15 A.M. EST; 8.15 CT
Deane Moore, songs, WEEI
Billy Rose, WGY
Health talk, WLW
Leon Cole, organ, WSM
9.30 A.M. EST; 8.30 CT
Mystery Chef, WEAF WEEI WGY
Radiograms, WHAM
Styles, KDKA
Courtship and Marriage Forum, WLW
Wildcats, WHAS
9.45 A.M. EST; 8.45 CT
Upstaters, WEAF
News, WEEI
Musical program, WGY
Household Hour, WHAM, 30 m.
Work-a-Day Thoughts, KDKA
Jacksons, WLW
Carla Romano, pianist, WABC WPG
Bob Atcher, WHAS
10 A.M. EST; 9 CT
News, Johnny Marvin, tenor, WEAF WGY WFLA
Josephine Gibson, WJZ WBZ KDKA
WBAL WSM
Rhythm Jesters, WLW
News, Bluebirds, WABC WCAU KMOX
News, Home Hour, WPG, 1 h.
Over the Backyard Fence, WNBX
10.15 A.M. EST; 9.15 CT
Clara, Lu 'n' Em, WEAF WEEI WGY WSM WLW
Hazel Arth, contralto, WJZ WBZ WHAM
Sammy Fuller, KDKA
Morning Topics, WFLA
Bill and Ginger, WABC WCAU
Dolly Dean, WHAS
10.30 A.M. EST; 9.30 CT
Breen and de Rose, Bob Emery, WEAF (WEEI at 10.35)
Market Basket, WGY
Today's Children, sketch, WJZ WBZ KDKA
WBAL WFLA
Livestocks, news, WLW
Radio Kitchen, WSM, 30 m.
Cosmopolitans, WABC WCAU WHAS
Markets, weather, WGN
Town Crier, WNBX
10.45 A.M. EST; 9.45 CT
Betty Crocker, cooking talk, WEAF WEEI WGY WLW WFLA
News, Radio Kitchen, WJZ WHAM KDKA
News, Musicale, Highway Safety, WBZ
Doris Loraine, Norm Sherr, WABC WCAU WHAS
Lovely Ladies, WGN
Sporting News, WNBX

- 11 A.M. EST; 10 CT
Music Appreciation Hour, Dr. Walter Damosch, conductor, Dance of the Blessed Spirits, Gluck; "Nutcracker Suite," Dance of the Toy Flutes, Tchaikovsky; Evening Song, Schumann; Midsummer Night's Dream, overture, Mendelssohn; Sleeping Beauty, waltz, Tchaikovsky, WEAF WEEI WGY WJZ WBZ WHAM KDKA WLW WSM WFLA, 1 h.
Cooking Close-ups, WABC
Farm talk, WPG
Sanders Sisters, WHAS
Recordings, WNBX
11.15 A.M. EST; 10.15 CT
Ben Greenblatt, pianist, WABC WCAU WHAS
Italian Program, WPG
Here's How, WNBX
11.30 A.M. EST; 10.30 CT
U. S. Army Band, WABC WCAU KMOX, 30 m.
Wandering Poet, WPG, 30 m.
Dream Doctor, WHAS
Hope Vernon, songs, WMCA
11.45 A.M. EST; 10.45 CT
Ken Tucker, WHAS
Drama, WNBX
12 NOON EST; 11 A.M. CT
Piano recital, WEAF WEEI
Roger Sweet, tenor, WGY
Fields and Hall, WJZ KDKA WSM
Weather, Monitor Views News, WBZ, 30 m.
Trio, WHAM
Salt and Peanuts, WLW
Moss and Jones, WFLA
Voice of Experience, WABC WCAU WHAS WBBM KMOX
Home Sweet Home, WPG
Current Events, WOR
Eddie Prior's Orchestra, WMCA, 30 m.
Tom, Dick and Harry, WGN
Christine Hawes, WNBX
12.15 P.M. EST; 11.15 A.M. CT
Honeyboy and Sassafras, WEAF WEEI
The Lady Fingers, WGY
Charles Sears, tenor, WJZ WSM KDKA (WHAM, weather, 12.25)
Market, produce reports, KDKA
Livestocks, WLW
'Round the World, WFLA
The Gumps, WABC WCAU WHAS WBBM KMOX
Merrymakers, WPG
Mrs. Reilly's Common Sense, WOR
Len Salvo, organist, WGN
Albert Leysath, WNBX
12.30 P.M. EST; 11.30 A.M. CT
Madcaps, Fred Wade, Harriet Lee, Norman L. Cloutier's music, WEAF, 30 m.
Stocks, produce markets, WEEI
Weather, Farm program, WGY, 30 m.
Farm and Home Hour, Frank T. Bell, speaker, WJZ WBZ KDKA WHAM WSM WFLA, 1 h. (WLW at 1)
Cousin Bob's Kinfolk, WLW, 30 m.
Wallace Butterworth, WABC WHAS WCAU
Dance Orchestra, WOR, 30 m.
Here's How, WMCA
Markets, Good Health and Training, WGN
Variety, WNBX
12.45 P.M. EST; 11.45 A.M. CT
Cabot and Castillo, WEEI, 25 m. (Kitchen talk at 1.10)
Allan Leifer's Orchestra, WABC WPG WBBM WCAU
Will Hollander's Orchestra, WMCA, 30 m.
1 P.M. EST; 12 NOON CT
Markets, weather, WEAF
Vagabonds, WGY
George Hall's Orchestra, WABC WCAU WPG, 30 m. (WPG, weather at 1)
Agricultural College, WHAS
Leo Freudberg's Orchestra, WOR, 30 m.
Just Plain Bill, WGN KMOX
1.15 P.M. EST; 12.15 CT
Peggy's Doctor, WEAF WEEI WGY
Gussip Club, WHAS WBBM KMOX
"Shut-in Hour," WMCA
Dorling Sisters, WGN
1.30 P.M. EST; 12.30 CT
Horatio Zito's Orchestra, WEAF, 30 m. (WGY, 15 m.) (WSM at 1.45)
N. E. Kitchen, WEEI, 30 m.
Vic and Sade, WJZ WBZ WLW WFLA
Rochester School of the Air, WHAM
Orchestra, KDKA
Markets, WSM
Little Jack Little's Orchestra, WABC WCAU WHAS WBBM KMOX
Male quartet, WPG
Theatre Club, WOR
Maximilian Bergere's Orchestra, WMCA
Markets, midday service, WGN, 30 m.
1.45 P.M. EST; 12.45 CT
Southerners, WGY
Words and Music, WJZ KDKA, 30 m. (WFLA, 15 m.)
Agricultural markets, WBZ
Jan Carlsson's Orchestra, WHAM, 30 m.
Ferde Grofe's Orchestra, WLW
Art Kassel's Orchestra, WABC WHAS WBBM KMOX
Talk, Child Education, WPG
Kay Fayre, "blues," WOR
Ragamuffins, WMCA
2 P.M. EST; 1 CT
Magic of Speech, Vida Ravenscroft Sutton, WEAF WEEI WSM WFLA, 30 m.
New York Social Welfare program, WGY
Book Talk, WBZ
Ohio School of the Air, WLW, 1 h.
"Marie, the Little French Princess," WABC WBBM KMOX
University of Kentucky, WHAS
Dr. A. F. Payne, WOR
Dorothy Atkins, songs, WMCA
Just Plain Bill, WGN
2.15 P.M. EST; 1.15 CT
Household Chat, WGY
Morin Sisters, WJZ WBZ
Rochester School of the Air, WHAM
KDKA Orchestra, KDKA
Helen Trent's Romance, WABC WCAU WGN KMOX
The Melody Singer, WOR
Drama, WMCA
2.30 P.M. EST; 1.30 CT
The Sizzlers, male trio, WEAF WEEI WGY
Home Sweet Home, WJZ
Home Forum, Cooking School, WBZ, 30 m.
Smackout, WHAM WSM WFLA
Home Forum, KDKA, 30 m.
American School of the Air, WABC WCAU WHAS WBBM KMOX, 30 m.
Martha Deane, WOR, 30 m.
Stuyvesant String Quartet, WMCA, 30 m.
Chicago Executive Club, WGN, 30 m.
2.45 P.M. EST; 1.45 CT
Vic and Sade, WEAF WEEI WGY
Alban Edkins, bass, WJZ WHAM WSM WFLA
3 P.M. EST; 2 CT
Ma Perkins, WEAF WEEI WGY WSM WLW
United States Marine Band, WJZ WBZ WFLA, 1 h. (WSM, 3.15-3.30) (WHAM, 55 m.) (KDKA, 45 m.) (WLW, 3.20-3.45)



EL BRENDL, comedian of the CBS-WABC "Hollywood Hotel" programs on Fridays from 9.30 to 10.30, never has been to Sweden, even though he assumes a dialect of the Land of GARBO.

- Philadelphia Orchestra, Leopold Stokowski, conductor, WABC WCAU WPG WHAS, 2 h.
Musical Revue, WOR, 30 m.
Crane Calder, WMCA
Ensemble, WGN
Afternoon Concert, WNBX
3.15 P.M. EST; 2.15 CT
Dorothy Page, WEAF WEEI WGY
Home Loan program, WLW
"Birds," WMCA
Jongleurs, WGN
3.30 P.M. EST; 2.30 CT
Woman's Radio Review, WEAF WGY, 30 m.
Reading Circle, WEEI, 30 m.
Radio Garden Club, WOR
Sports Review, Concert Artists, WMCA, 1 h., 30 m.
Home Management, WGN
Yankee Corn Huskers, WNBX
3.45 P.M. EST; 2.45 CT
Walter Furniss, songs, WLW
Heat Waves, trio, WOR
Musical, WGN
MICROPHONE Chat, WNBX
4 P.M. EST; 3 CT
Music Guild, Frank Black, director, WEAF WFLA WSM, 1 h. (WEEI at 4.30)
Stocks, baritone, WEEI, 30 m.
Betty and Bob, sketch, WGY WJZ WBZ WHAM KDKA
The Life of Mary Sothern, WLW
Silver Strains, WOR
Harold Turner, pianist, WGN
Soreheads, WNBX
4.15 P.M. EST; 3.15 CT
"Books," Levere Fuller, WGY
Sisters of the Skillet, WJZ WBZ WHAM
Karen Flados, KDKA
Charlie Kent, WLW
Studio Orchestra, WOR
Mark Love, basso, WGN
John Angell, WNBX
4.30 P.M. EST; 3.30 CT
Elmer Tidmarsh, organist, WGY
The Three C's, Trio, WJZ
ERA Civic Chorus, WBZ, 30 m.
Boy Scouts, WHAM
Markets, Arm Chair Driver, KDKA
Betty and Bob, WLW
"Town Talk," WOR
Blue Moments, WGN
4.45 P.M. EST; 3.45 CT
Stocks, WGY
Women's Clubs, WJZ KDKA
Stamp Club, WHAM
Business news, WLW
"Science in Your Home," WOR
5 P.M. EST; 4 CT
"Causes of War," Sir Austen Chamberlain, WEAF
Health talk, WEEI
Musical program, WGY
Al Pearce and his Gang, WJZ WHAM KDKA WSM WFLA
Monitor Views News, WBZ
Dorothea Ponce, songs, WLW
"Og, Son of Fire," WABC
Stock Quotations, WPG
Men of Notes, WBBM
Music, current events, WOR
Catherine Curtis, WMCA
Bob Forsans, tenor, WGN
5.15 P.M. EST; 4.15 CT
Tom Mix's Straight Shooters, WEAF WEEI WGY WLW
Princeton University Glee Club, WJZ WHAM WSM
Markets, WBZ
Kiddies' Klub, KDKA
Indiana Aces, WFLA
"Skipper," WABC
Alice Woodlyn, songs, WPG
Gracie Dunn, WBBM
"Captain Tom and his Pirate Ship," WOR
Buddy Johnson's Orchestra, WMCA
Popular Rhythm, WGN, 30 m.
5.30 P.M. EST; 4.30 CT
Nellie Revell interviews Fred Hufsmith, WEAF WEEI WGY WSM
The Singing Lady, Nursery Rhymes, songs, stories, WJZ WBZ WHAM KDKA WLW Orchestra, WFLA
Jack Armstrong, WABC WCAU
Out of the Dusk, WHAS
Organ, WBBM
Saffire Talk, WPG
Sally's Party, WMCA, 30 m.
5.45 P.M. EST; 4.45 CT
Captain Tim Healy's Stamp Club, WEAF WEEI WGY
Little Orphan Annie, WJZ WBZ WHAM KDKA WBAL WFLA
Jack Armstrong, WLW
Financial reports, news, WSM

- "Robinson Crusoe, Jr.," WABC WCAU
Nick Nickerson, songs, WPG
Out of the Dusk, WHAS
Adventures of Jimmie Allen, WOR
Pianist, WGN
6 P.M. EST; 5 CT
"Thrills of Tomorrow," WEAF WGY
Evening Tattler, WEEI, 30 m.
Jack Berger's Orchestra, WJZ
Adventures of Jimmie Allen, WBZ
Sports, WHAM
Dan and Sylvia, KDKA
String music, WLW
Hawaiians, WSM
Al Kavelin's Orchestra, WABC WCAU
Boy Scout Drama, WHAS
"Og, Son of Fire," WBBM KMOX
Uncle Don, WOR, 30 m.
Boys' Club, WMCA
Melody Moments, WGN, 30 m.
6.15 P.M. EST; 5.15 CT
"Desert Kid," WEAF
Jimmy Allen's Adventures, WGY
Ely Culbertson, "Bidding 1935," WJZ WBZ WHAM
Orchestra, KDKA
Al and Pete, WLW
Sarie and Sallie, WSM
Twilight Favorites, WFLA
Bobby Benson, Sunny Jim, WABC WCAU
"Skipper," WHAS WBBM KMOX
Safeguarding Investments, Jerry Blaine's Orchestra, WMCA WIP
6.30 P.M. EST; 5.30 CT
News, Marion MacAfee, soprano, WEAF
Rhyming Reporter, news, drama, WEEI
News, Brevities, WGY
News, Gale Page, songs, WJZ
News, weather, WBZ
Pleasure Cruise, WHAM
Comedy Stars, KDKA
Bob Newhall, WLW
Freddie Rose, WSM
News, Garden of Melody, WFLA
H. V. Kaltenborn, WABC
Club program, WHAS
Jack Armstrong, WBBM KMOX
Gabriel Heatter, news commentator, WOR
Roundup, WMCA
Singing Lady, WGN
6.45 P.M. EST; 5.45 CT
Billy Batchelor, Raymond Knight, WEAF WEEI WGY WTAM
Lowell Thomas, WJZ WBZ WHAM KDKA WLW WFLA
Connie Gates, songs, Margaret Brainard, WABC WCAU (news, 6.55)
Woody and Will'e, WHAS (news, 6.55)
Little Orphan Annie, WSM
"Cocktail Time," WOR
Sagebrush Harmonizers, WMCA
7 P.M. EST; 6 CT
Jack and Loretta Clemens, WEAF
Studio Chorus, WEEI
Current Events, WGY
Amos 'n' Andy, WJZ WBZ WHAM KDKA WBAL WLW WFLA
Reddy Kilowatt, Life in Tennessee, WSM
"MYRT and MARGE," WABC
Dan Russo's Orchestra, WBBM
Ford Frick, sports, WOR
Florida Grafton, songs, WMCA
Jimmy Allan, WGN
7.15 P.M. EST; 6.15 CT
William Lundell, WEAF WEEI
Plantation Echoes, Willard Robison's Orchestra, WJZ WBZ WHAM KDKA WBAL WSM
Lum and Abner, WLW
Just Plain Bill, WABC WCAU
Front Page Drama, WOR
Jennie Goldstein, WMCA
Ensemble, WGN
7.30 P.M. EST; 6.30 CT
Fur Trappers, WEAF
After Dinner Revue, WEEI
Lang Sisters, WGY
Red Davis, WJZ WBZ WHAM KDKA WSM WFLA
Paul Keast, Rollo Hudson's Orchestra, WABC WCAU
Variety WHAS
Mystery Sketch, WOR
Jan, Jude and Jerry, WMCA, 30 m.
Sports talk, WGN
7.45 P.M. EST; 6.45 CT
Uncle Ezra, WEAF WEEI WGY
Dangerous Paradise, WJZ WBZ WHAM KDKA WLW WSM
Melody Man, Frank Benn's music, WFLA, 30 m.
Boake Carter, WABC WCAU WHAS WBBM KMOX
Dance Music, WOR
Amateur Night, WGN
Strickland Gillilan, WMCA
8 P.M. EST; 7 CT
Concert, Jessica Dragonette, Banta and Rettenberg, piano duo, Rosario Bourdon's Orchestra, WEAF WEEI, 1 h. (WGY, 30 m.)
Irene Rich, "Jewels of Enchantment," WJZ WBZ WHAM KDKA WSM
Cotton Queen Revue, WLW, 30 m.
Easy Aces, WABC WCAU WHAS WBBM KMOX
Dual Trio, WPG, 1 h.
The Lone Ranger, WOR, 30 m.
Three Little Funsters, WMCA
Lone Ranger, WGN, 30 m.
8.15 P.M. EST; 7.15 CT
Dick Liebert, Robert Armbruster's Quartet, Mary Courtland, WJZ WBZ/KDKA
Adventures of Jimmy Allen, WHAM
Lasses and Honey, WSM
Front Page drama, WFLA
Edwin C. Hill, WABC WCAU WHAS WBBM KMOX
5-Star Final, WMCA
8.30 P.M. EST; 7.30 CT
Farm Forum, WGY, 30 m.
Dwight Fiske, Al Goodman's Orchestra, WJZ WBZ WHAM KDKA WBAL, 30 m.
"Fire-side Songs," WLW, 30 m.
Lawrence Goodman, piano, WSM
True Story Court, WABC WCAU WHAS WBBM KMOX, 30 m.
Musical Memory Book, WOR, 30 m.
Memory Book, WGN, 30 m.
Comedy Team, WMCA
8.45 P.M. EST; 7.45 CT
Mary Cortner, soprano, WSM
Kay Thompson, WMCA
9 P.M. EST; 8 CT
Waltz Time, Frank Munn, Vivienne Segal, Abe Lyman's music, WEAF WEEI WGY WLW, 30 m.
Phil Harris' Orchestra, Leah Ray, WJZ WBZ WHAM KDKA, 30 m.
U. of Michigan program, WSM, 30 m.
March of Time, WABC WCAU WHAS WBBM KMOX, 30 m.
Movie Broadcast, WPG
"Housewarming," WOR, 30 m.
"Conscience the Fury," WMCA WIP, 30 m.
Orchestra, WGN
9.15 P.M. EST; 8.15 CT
Harmony Four, WPG
Comedy Stars, WGN
9.30 P.M. EST; 8.30 CT
Pic and Pat, one-night stands, Joseph Bonime's orchestra, WEAF WGY, 30 m.
Concert Dance Orchestra, WEEI, 30 m.
Phil Baker, Leon Belasco's music, WJZ WBZ WHAM KDKA WSM WFLA, 30 m.
Henry Theis' Pepsters, WLW
Hollywood Hotel, WABC WPG WHAS WCAU WBBM KMOX WBT, 1 h.
Lum and Abner, WOR WGN
Continental Cafe, WMCA, 30 m.
9.45 P.M. EST; 8.45 CT
Talk, Representative Finlay H. Gray, WLW
Jan Garber's Orchestra, WOR WGN
10 P.M. EST; 9 CT
First Nighter, Don Ameche, WEAF WEEI WGY WLW WSM WFLA, 30 m.
Minstrels, Theo Karle, Al Bernard, Paul Dumont, WJZ WBZ WHAM KDKA, 30 m.
Elaine Jordan, "blues," WOR
Boxing Bout, Fuller vs. Cool, WMCA
10.15 P.M. EST; 9.15 CT
Harlan Eugene Reed, WOR
Bridge Club, WGN
10.30 P.M. EST; 9.30 CT
Frances Perkins, Secretary of Labor, WEAF WGY WFLA
Floyd Gibbons, WEEI
Jewish program, WJZ WBZ WHAM, 30 m.
Silvertoppers, KDKA
Phantom of the Future, WLW, 30 m.
Teachers' College, WSM, 30 m.
Kate Smith, WABC WPG WHAS KMOX, 30 m.
Norman Brokenshire's Orchestra, Henry Burbig, Nat Brusiloff, Sid Gary, Rhythm Girls, WOR WLW, 30 m.
Jerry Freeman's Orchestra, WMCA, 30 m.
Attilio Baggio, tenor, WGN, 30 m.
10.45 P.M. EST; 9.45 CT
Gothic Choristers, WEAF WGY WFLA
The American Family Robinson, WEEI
Moments of Melody, KDKA
11 P.M. EST; 10 CT
George R. Holmes, Chief, Washington Bureau, International News Service, WEAF WFLA
Weather, current events, WEEI
Ray Nichols' Orchestra, WGY, 30 m.
Jack Denny's Orchestra, WJZ, 30 m. (WHAM at 11.15)
Weather, WBZ
Dance music, WHAM
Uncle Tom and Betty, KDKA
News, Los Amigos, WLW, 30 m.
Amos 'n' Andy, WSM
Ozzie Nelson's Orchestra, WABC, 30 m.
Myrt and Marge, WBBM WHAS KMOX
Steel Pier Dance Tunes, WPG, 30 m.
Weather, Current Events, WOR
Voice of Romance, WMCA
Dudley Crafts Watson, WGN
11.15 P.M. EST; 10.15 CT
Angelo Ferdinando's music, WEAF WEEI WFLA
Joe Rines' music, WBZ
Orchestra, KDKA, 30 m.
Weather, orchestra, WHAS
Henry Busse's Orchestra, WBBM
Moonbeams, WOR
Scott Fisher's Orchestra, WMCA WIP
Dream Ship, WGN
11.30 P.M. EST; 10.30 CT
Jolly Coburn's Orchestra, WEAF WGY WSM WFLA, 30 m.
Reichman's Orchestra, WEEI, 30 m.
Freddy Martin's Orchestra, WJZ WBZ, 30 m. (KDKA at 11.45)
Tommy Tucker's Orchestra, WHAM, 30 m.
Stan Stanley's Orchestra, WLW, 30 m.
Jacques Renard's Orchestra, WABC WPG, 30 m.
Dream Doctor, Peter Riccardi, WHAS, 30 m.
Earl Hines' Orchestra, WBBM
Noy Gorodinsky's Orchestra, WOR, 30 m.
Luck Millinder's Orchestra, WMCA, 30 m.
Wayne King's Orchestra, WGN
11.45 P.M. EST; 10.45 CT
Jan Garber's Orchestra, WGN
12 MIDNIGHT EST; 11 P.M. CT
Eddie Duchin's Orchestra, WEAF WEEI WGY, 30 m.
Ralph Kirbery, Felix' Orchestra, WJZ WBZ KDKA WTAM WSM WFLA, 30 m.
Eddie Loughton's Orchestra, WLW, 30 m.
Scott Fisher's Orchestra, WABC WPG WBBM KMOX, 30 m.
Orchestra, WHAS, 30 m.
Florence Richardson's Orchestra, WOR
Day's End, WMCA, 30 m.
12.15 A.M. EST; 11.15 P.M. CT
Ted Weems' Orchestra, WGN
12.30 A.M. EST; 11.30 P.M. CT
Ted Fio-Rito's Orchestra, WEAF WEEI WGY WSM WFLA, 30 m.
Archie Bleyer's music, WJZ WBZ, 30 m.
DX Club, KDKA, 30 m.
Ferde Grofe's Orchestra, WLW, 30 m.
Frank Dailey's Orchestra, WABC WBBM KMOX, 30 m.
Julie Wintz's Orchestra, WOR, 30 m.
Archie Bleyer's music, WMCA, 30 m.
Earl Burnett's, Charlie Agnew's, Jan Garber's Orchestra, WGN, 1 h.
1 A.M. EST; 12 MIDNIGHT CT
Stan Stanley's Orchestra, WLW, 30 m.
Florence Richardson's Orchestra, WABC, 30 m.
Willie Bryant's Orchestra, WMCA

EVERY subscriber to or other purchaser of The MICROPHONE is entitled to share its benefits with a friend. Write to Circulation Manager, The MICROPHONE, No. 34 Court Square, Boston, Massachusetts, giving the names and addresses of those you'd like to become familiar with The MICROPHONE. A sample copy will be sent promptly to each name given, without obligation.

Reflections

By Diana Herbert

The MICROPHONE'S Fashion Observer

LAST WEEK we discussed Christmas presents that could be made at home. This week we are going to venture a few suggestions for the people who buy their gifts.

To begin with, we would like to enter a plea for frivolity. This does not mean that your gift may not be useful as well as ornamental, but that it should be the opposite of "sensible." Don't give the kind of thing your friend would buy for herself anyway. That is very dull. Instead, choose the sort of thing she would like to have but would feel was a foolish or extravagant purchase, in short, something unnecessary. "Extras" always make much the most exciting gifts.

IF YOU give stockings, let them be cobwebby sheer. They don't wear well, but every girl longs for them as she strong-mindedly orders service-weight, or medium sheer.

IF IT is underwear, make it flattering and luxurious. Everyone buys plenty of the sensible kind. Add an embroidered monogram. Or send a gay nightie printed with bunches of cherries and boasting a narrow velvet sash and a bateau neckline. JOY LYNNE wears this.

A FEW IDEAS: Mules in pale satin or brocade, barefoot sandals of black satin lined with red like the ones JANE PICKENS wears for lounging. Long white suede evening gloves; a set of three lipsticks in different shade; tiny emerald-colored boxes of eye-shadow, brown, green and violet, or grey, blue and silver. A sterling silver, gold or tortoise shell monogram which may be shifted from one bag to another; a tortoise shell pocket-comb, initialed in gold or brilliants. A silk check-book cover, also initialed; tiny silk or brocade covered address, engagement and shopping books.

AND FOR hard-to-please masculine friends: An especially nicely bound book or a good modern first edition; books of giant matches-initialed of course; terry cloth bathrobes to put on after a shower; an absolutely unpredictable rubber ball from England, guaranteed to produce laughter.

Abbey Players Are "Fireside" Guests

An informal chat about Irish plays and literature will form the program of the "American Fireside" over the NBC-WJZ network on Sunday evening, December 9 at 10.30 o'clock.

The Abbey Theatre Players, now presenting Irish plays on Broadway, will be the guests on the program.

ELBERT A. WICKES, producer, and ARTHUR SHIELDS, a leading player, will talk about the works of SYNGE, Lady GREGORY and other Irish writers. The Abbey Players will also present a scene from "The White-Headed Boy."

Shortest Program On Shortest Day

The shortest day of the year, December 22, will be observed by the shortest complete radio program ever put on the NBC-WJZ network. The program will be heard over the NBC-WJZ network at 6.35 P. M. for five minutes.

The capsule program will consist of CHOPIN'S "Minute Waltz," ten seconds of poetry, a one minute drama, a short song and a comedy sketch.

Eminence



GERALDINE FARRAR, celebrated American soprano, will act as commentator during the intermission of the Metropolitan Opera broadcasts, which will be heard each Saturday afternoon over both NBC networks, beginning December 29.

Pig-Killing Demonstrated On the Radio

By The MICROPHONE'S Special Washington Correspondent

Butchering technique is being taught the farmers of Wisconsin by radio.

Meat prices have been climbing of late, thanks to the drought. So livestockman JAMES LACEY and farm radio editor KENNETH GAPEN at the Wisconsin College of Agriculture took the state-station microphone to the hog barn and put on a pig-killing demonstration for radio listeners.

The National Committee on Education by Radio, which is fighting before the Federal Communications Commission for an allotment of radio bands to educational, religious and other non-profit organizations, describing the LACEY-GAPEN pig-killing demonstration, said:

"The killing demonstration was planned so that listeners would not object to any part of it.

"This somewhat lessens possible force of the claims of certain smooth-tongued, suave-actioned, commercial-minded, radio-interested persons who say that educational radio programs, particularly those through stations owned by educational institutions, are dry, deplorably academic sleep-producing and lacking in showmanship.

"These regular farm broadcasts had action, showmanship, kept listeners interested and demonstrated the best practical and profitable methods of killing, cutting and canning pork on the farm."

Romberg Writes "Umpa"

SIGMUND ROMBERG has written an original sketch about a tuba player with the descriptive title "Umpa" for his broadcast over the NBC-WJZ network on Saturday, December 8, at 8 P. M.

"More Professional"



PHIL BAKER, radio comedian, saw his valet leaving the apartment with BAKER'S accordion under his arm. "Where are you going with my accordion?" BAKER demanded. "To the laundry," replied the valet. "What for? Are you going to give the Chinaman a lesson?" "Oh, no, sir," said the valet. "The case is empty. I always carry the laundry to him this way. It looks more professional."

Nimblewits

By Everett Smith

The MICROPHONE'S Puzzle Expert

NO. 1. (no time limit) The following crypt is reprinted from a recent issue of The Cryptogram, official publication of the American Cryptogram Association. There's music to the ears in this message:

BCZPDV ZYX XJQYZ PDEIS OFZYQXYYV EXOZMVX QFXA ZYX NYZPU, MBYCNFQ ZPU VKMZYX.

No. 2. (5 minutes) There's usually many a step between RUMOR and FACTS. In this case, however, only eight moves are needed to make the change. Can you do it, by changing only one letter at a time, and forming a proper word each time?

No. 3. (3 minutes) A chance to warm up on a bit of WINTER. How many other six-letter words, each starting with the letter "W" and ending with the letter "R," can you list in three minutes?

No. 4. (5 minutes) Suppose a man 5 feet 10 inches tall is walking at the rate of 5 feet per second away from a street lamp which is 10 feet high. How far does the shadow of the top of his head move?

No. 5. (3 minutes) The rebus below represents a seven-letter word. The verse gives you a clue:

C
D
E

The gentle, noble, good and kind Will overlook the faults they find.

Answers to Last Week's Nimblewits

No. 1. If wrinkles must be written upon our brows, let them not be written upon the heart; the spirit should not grow old.

No. 2. 216 miles.

No. 3. Money, Honey, Hones, Hines, Hints, Hents, Heats, Hears, Heirs.

No. 4. Patcher, Carpath.

No. 5. No A.H. Noah.

Power Policies Explained

FRANK R. MCNINCH, chairman of the Federal Power Commission, will discuss "The New Power Policies of the Administration" during the National Radio Forum, arranged by the Washington Star, over the NBC-WJZ network at 10.30 P. M. on Monday, December 10.

STATION DIRECTORY

Page 4

Monopoly In Radio Is Charge

(Continued from Page 1)

exists in the radio communication field and is growing rapidly.

"The existing radio structure in the United States has been erected with an amazing disregard of the general good and is a flagrant violation of the principle that broadcasting must serve the public interest, convenience and necessity."

The National Broadcasting Company and Columbia Broadcasting System like a giant octopus, he said "have a far-reaching, powerful and tenacious grip" on industries allied with broadcasting. The clergyman added:

"Of the 40 cleared radio channels in the United States and the four so-called high-powered experimental regional channels, every one is now held by a network and chiefly by the 'National' chain systems, either as their exclusively owned property or under leasing and operation arrangements that give the chains almost complete control of those supposedly independent stations.

"In this connection it is to be noted and well weighed that more than 1,000 watts power cannot be used during the night time operation on any of these channels.

"If this is not monopoly, what can be?"

NBC controls 18 stations while CBS has 12 "under its heel," Father HARNEY said; NBC is owned by the Radio Corporation of America and RCA is "the most finished specimen of monopoly in the United States."

Leslie Howard in "Berkeley Square"

LESLIE HOWARD, stage and screen actor, who played in both the stage and movie version of "Berkeley Square," the play by JOHN BALDERSTON, will re-enact his role on Sunday, December 9 at 2.30 P. M. over the NBC-WJZ network.

In the Radio Theatre production of the play, Mr. HOWARD will be supported by a cast of Broadway stage actors and actresses.

POWERS' Asthma Relief

has been a boon to the afflicted for over 50 years. 6 oz. 60c - 18 oz. \$1.20.



Buy at Your Local Druggist's or Write Direct
E. C. POWERS COMPANY

Box 62, Dorchester Center Station, Boston

"First Maestro Of The Air"

RADIO LISTENERS who have heard the symphonic syncopations of Paul Specht, "the First Maestro of the Air," and who will recall his pioneer days in the field of musical endeavor, ask the question:

"How old is this genial conductor who has shared in such triumphs over so long a period?"

And many who danced to his first air programs, and purchased his recordings, but who never had the opportunity of meeting Specht personally, to look in on one of his air shows, or to dine where his 16-piece orchestra is playing have a surprise in store.

For Paul Specht, leader of the first dance orchestra to broadcast over the air, his initial programs being announced by Ted Husing and Norman Brokenshire; leader of the first orchestra to broadcast to England and then from England to America; leader of the orchestra twice the nation's choice to play at the inaugural ball at Washington; leader of the band to make a national tour under sponsorship of the Democratic National Committee, is still a young man in his thirties.

And we find Paul Specht and his music ultra-modern, played by youthful geniuses of rhythm, with the rare talent of being able to mix with the new, a little of the old in a manner pleasing to the tastes of the select and understandable to the masses.

A critic recently made the statement that "music by Specht is like rare old wine." Mellow, vibrant and striking a responsive chord; invigorating, likened to a stimulant that brings ecstasy to the heart and deepest satisfaction to the soul.

"Classical jazz" or "symphonic syncopation" had its birth in the little town of Lafayette, Indiana, near Purdue University. It was there that Paul Specht, a youth with dreams of becoming a great concert artist, already a child prodigy and master of the violin, said:

"I will give them the classics of Bach and Brahms, and and in a way they will comprehend and like."

The boy Paul had learned that, while his musical education had been along classical lines, the great American public demanded music of the popular variety. The playing of Rubenstein's "Melody in F" one evening drew

By Herb Jones

applause, both from the students and a famous foursome that were regular guests, seated at a table near to the young director. That foursome was composed of Senator Jim Watson, James Whitcomb Riley, George Ade and Harry Houdini. Paul was taken in hand and the terms "classical jazz" and "symphonic syncopation" were conceived. With their encouragement Paul started on the way to fame.

Where there was emptiness Paul Specht left fullness. Where there was demand for the good, Paul Specht gave the best.

Versatility; the ability to give "just a little more than is asked for" made Paul Specht the peer of the orchestral kingdom. And the retaining of the beginning, the alertness for the coming and the knowledge of the past has given to this popular maestro something even better than ever he possessed. Therein lies the secret of the new laurels he is winning.

"Music must come from the heart," and Paul Specht and the musicians he directs give music from the heart, whether it be in the playing of some classical gem, or the rendition of "St Louis Blues."

Not so long ago, I wrote an article for The MICROPHONE giving what I hoped would be helpful suggestions about that song you've written—don't tell me you haven't at least thought about writing one because I think almost everyone has.

Well, Paul Specht happened to see that article and approved the ideas. With his permission, then, and with yours, let me, very briefly, review what I wrote.

I said, in the first place, that the odds are against your having any luck in getting your song published and performed. But if your melody (the most important item to my mind) is good and original, you do stand a better chance. Such a melody should be simple and well within the range of the average voice.

Once the song is written, try to create a local demand for it. Get your friends talking about it; try to get it played by some local band on the air.

Then you have something to talk about when you bring it to a publisher.



PAUL SPECHT, one of the first orchestra leaders to play regularly on the air, has played twice at Presidential balls, and is heard constantly on the networks.



MICROPHONE

THE ORIGINAL U.S. RADIO NEWSPAPER'S

5¢

Radio Weekly

Programs For Week Ending December 14



Guy Lombardo, A Caricature by Leed

This file including all text and images are from scans of a private personal collection and have been scanned for archival purposes only. This file may be freely distributed, but not sold on ebay, electronically or in reproduced form. Please support the preservation of old time radio.