

How to Fix Sets for Best Reception

# Radio Digest

TWICE  
A MONTH

INDEXED

FIFTEEN  
CENTS

FIRST JANUARY NUMBER

Title Reg. U. S.  
Pat. Off. &  
Dom. of Canada

Vol. XIX No. 6



*Guyon Explains How to Make Sets Tune Out Stations; Fourth Section of Whozit Game; Marcella; Hay and Kay at Play; Ford and Glenn at WLW; Revised Station Directory*

# RADIO LEADERS GIVE IDEAS ON RADIO LAW

## COORDINATING COMMITTEE MAKES OFFICIAL REPORT

### Asks Duplex Control, Recognition of Stations' Priority and Service Rights and Five Year Licenses

WASHINGTON, D. C.—The National Radio Coordinating Committee has delivered its report to Congress, and while not sensational, the committee's report contains much sensible thought for the legislative solution of the present broadcasting muddle which now demands immediate remedy. The report's high points are:

1. The committee favors a control consisting of two bodies—a federal Radio commission and the department of commerce, whose functions shall be as determined in the House (White) bill.
2. The Radio law should contain a recognition of rights as between individual broadcasters as distinguished from the vested rights of the United States.
3. The right of priority of operation (meaning the allocation and use of wave lengths) should be thoroughly defined, determining this right on (a) the length of time during which stations existing at the time the proposed Radio act becomes a law, have operated, (b) The character of service rendered by them, and (c) the requirements of their zones and communities for radio service.

### Defend Rights of Discretion

4. The term of broadcast license should be for not less than five years, providing that the licensee is operating his station regularly and properly.
5. Broadcasters should not be deprived of their rights to refuse the advertising or to refuse to render a service at their discretion or to reestablish rates commensurate with the time and character of a program in exactly the same manner as newspapers, for reason of dishonesty or false statement may refuse to accept advertising copy for publication.
6. Unauthorized rebroadcasting of any one station's material by another station should not be permitted.

### Committee Represents Whole Industry

The coordinating committee of the Radio industry represents all branches of the industry in the present fight for adequate legislation.

Great care has been taken by the committee to present an organized and coordinated report to Congress, that this session without further ado may know what is required immediately in legislation.

## Stations Must Waive Rights When Signing for Relicenses

WASHINGTON, D. C.—Since the signing of the emergency Radio resolution by President Coolidge, which passed at the last session of Congress, the Radio section of the department of commerce in renewing old station licenses is making all applicants sign a waiver which is provided for in the law. The waiver follows: "As required as a part of the application for station hereto attached, the applicant hereby waives any right or claim of right, as against the United States, to any wave length, or to the use of the ether in Radio transmission, because of previous license to use the same or because of the use thereof."

## New Stations

New stations licensed by the department of commerce last month include: WWRP, Detroit, Mich., 300m-999.4kc; KGDO, Dallas, Texas, 285m-1052kc; KXL, Portland, Ore., 400m-749.6kc; WLCL, Ithaca, N. Y., 266m-1127kc; WKBU, New Castle, Pa., 238m-1260kc; WEKD, Philadelphia, Pa., 249.9m-1200kc; KFQX, Seattle, Wash., 210m-1428kc; KVOB, Seattle, Wash., 333.1m-900kc; WLBH, Farmingdale, N. Y., 230m-1304kc; WMVM, Newark, N. J., 475.9m-630kc; KGCU, Mandan, N. D., 285m-1052kc; WABF, Pringleboro, Pa., 410.7m-730kc; WPEP, Waukegan, Ill., 212.6m-1410kc; KGDP, Pueblo, Colo., 260.7m-1150kc; KGEA, Seattle Wash., 345m-869kc; WRRS, Racine, Wis., 360m-832.8kc; WPAB, Norfolk, Va., 319m-940kc; KGDR, San Antonio, Texas, 240m-1249kc; WWVA, Wheeling, W. Va., 348.6m-860kc; WLBI, East Wenona, Ill., 296.9m-1010kc.

New call letters will be heard from the following stations: WWNC, Asheville, N. C., formerly WABC; KTAP, San Antonio, Texas, formerly KGCM; WTHO, Ferndale, Mich., formerly WJAF.

The following stations changed wave lengths: WKBO from 309.1m-970kc to 303.9m-980kc; WCOA from 222.1m-1350kc to 252m-1190kc; WSAR from 254.1m-1180kc to 322m-930.1kc; WKBM from 215.7m-1390kc to 285.5m-1050kc; KFVD from 205.4m-1460kc to 208m-1441kc; WOAN

## J. LOUIS GUYON



When WGN sued WGES for interference, the Chicago Tribune station reckoned not with the fight in J. Louis Guyon, WGES owner. Story is given in full on page 3.

from 282.8m-1060kc to 356.4m-841.2kc; KGCL from 230.6m-1300kc to 238m-1260kc; WFCI from 299m-1109kc to 258.5m-1160kc; KWTC from 260.7m-1150kc to 263m-1140kc; KRLD from 357.1m-839.6kc to 353m-849.4kc; KSEA from 312.6m-959kc to 260.7m-1150kc.

The Triangle Broadcasters are now the owners of WHFC, Chicago, Ill. KFVR, Denver, Colo., has been taken over by the Olinger Broadcasting Corporation. WWNC, the new call of the old Asheville, N. C., station, WABC, also changes owners and is now managed by the Asheville Chamber of Commerce. The State Teachers College takes over KFKZ. WTAL is now the voice of the Toledo Broadcasting Company.

## VICTOR ON AIR AGAIN STARTING EVE JAN. 1

### MORE THAN SCORE OF STATIONS TO BROADCAST

Program Heralds New "Blue" Network of N. B. C. Embracing WJZ, WBZ, KDKA and KYW

NEW YORK.—The Victor Talking Machine Company will sponsor another series of programs by world famous artists, the opening concert to be broadcast on New Year's night, January 1, it has been announced by the National Broadcasting Company.

The opening program will be of two hours' duration, from 9:00 to 11:00 P. M., Eastern Time, and broadcast through more than a score of stations, including WEAJ and WJZ in New York.

The opening Victor program also inaugurates a new chain of the National Broadcasting Company with WJZ as the "key" station. The chain will be known as the "Blue Network" and will allow simultaneous broadcasting from WJZ through WBZ, KDKA and KYW. For the broadcasting of the first Victor program the "Blue Network" will be joined with the "Red Network," as the WEAJ chain is to be known, as well as other stations throughout the country.

Following the New Year's night presentation, Victor concerts will be broadcast bi-monthly on Friday nights from 9:00 to 10:00 o'clock, Eastern time, through the "Blue Network."

## FRONT COVER GIRL IS MAYBELLE CARSTENS

OUT of the fragrant land of roses and apple blossoms comes the demure maiden who greets you on the Radio Digest cover this issue. Her name is Miss Maybelle Carstens and she is a favorite with a very large circle of admirers who listen to the programs broadcast by KWSC of the Washington State College at Pullman, Washington. Miss Carstens is a reader and a regular member of the staff.

# CONTENTS

Radio Digest, Illustrated, Volume XIX, Number 6, published Chicago, Illinois, January 1, 1927. Published semi-monthly on the first and fifteenth of each month by Radio Digest Publishing Co. (Incorporated), 510 N. Dearborn Street, Chicago, Illinois. Subscription rates yearly, Three Dollars; Foreign Postage One Dollar additional; single copies Fifteen Cents. Entered as second class matter May 3, 1926, at the post office at Chicago, Illinois, under the Act of March 3, 1879. Title Reg. U. S. Patent Office and Dominion of Canada. Copyright 1927 by Radio Digest Publishing Co. All rights reserved.

"All the News of Radio".....	2 to 5
J. Louis Guyon Answers WGN; Shows Trouble Is in Faulty Sets.....	3
News Briefs of the Broadcasters; Woman's Program Index.....	4
Hay and Kay Play New Way; Ford and Glenn at WLW; Fans Crown New Sport Announcer.....	5
How to Fix Sets for Results, Part I, by "King Milo" Gurney.....	7
"Goody Goody Girl" (Continued); The Latest in Radio Accessories.....	8
How to Build Bruno Regenatrol, Part III, Conclusion, by Joseph Calcaterra.....	9
Fourth Section of Whozit Pictures.....	10, 12 and 13
Directory of Radiophone Broadcasting Stations, Part I, Alphabetical List of Calls and Data.....	11
Editorials; Indi-Gest; Condensed by Dielectric.....	14
An Evening at Home with the Listener In (Central Time).....	15
Advance Programs for the Larger Stations, January 1-14.....	16 to 28

## Looking Ahead

**The Half Way Milestone Is Passed in Whozit**—and several score of Radio listeners have half won one of the \$26,000.00 in prizes. Are you a possible winner? Fifth section of the fascinating Whozit game in January 15 issue.

**"Children's Hour at KHJ"** is one of the short features to appear next issue. Read about "Uncle John" and his helpers. "Voices of WPCH" and other interesting stories will accompany.

**COMING—A Super-Het That Heard the Philippines**, and that right through the Chicago barrage, will soon be described how to build. **YOU ALL** will want to make this wonderful receiver—the last word!

Special articles about broadcasting stations and artists, with photographs, and NON-RADIO fiction 5,000, 10,000 and 30,000 words in length are desired. No manuscripts accepted unless typewritten and prepaid, or returned without return postage being inclosed. All manuscripts are sent at owner's risk.

## Newsstands Don't Always Have One Left

WHEN YOU WANT

# Radio Digest

YOU WANT IT!

BE SURE OF YOUR REGULAR COPY BY SUBSCRIBING NOW

## SEND IN THE BLANK TODAY

Publisher Radio Digest, 510 N. Dearborn St., Chicago, Illinois.

Please find enclosed check M. O. for Three Dollars (Four, Foreign) for One Year's Subscription to Radio Digest, Illustrated.

Name .....

Address .....

City ..... State.....

## SHORT WAVES

By Marcella

Fred Jeske; "Chubby" Parker; Charlie Schultz and Lee Sims; Arthur F. Edes; "Uncle John" Daggett; Louis John Johnen; WFAA Favorites; Edith Carpenter and Grace Ingram; Milton J. Cross; Stuart Dawson; O. D. Temple; Harry Bailey.

OH thanks, awfully, and I wish the same to you. Yes indeed, the loveliest sort of Christmas and truly I'm fairly bursting with happiness. You can't imagine all the darling things I received and I'm dying to tell you all about them but my desk is heaped high with letters, still unanswered. The greatest happiness Marcella can anticipate for the New Year is a yard or more of space in this semi-monthly compendium to print answers to all the interesting letters she receives.

And may the good Lord bless my most intimate circle of regulars. I count Dee of Canea one of these and here's the best I can do for her. For Request No. 1 she would like to see a t. n. of Fred Jeske. Here he is, Dee. He is a darlin' lookin' man with his dark, wavy hair and pearly teeth—that smile is the most captivat' smile, too. And Ben Pratt, the mischievous publicity director of WBBM, Chicago, tells me that Fred simply knocks 'em dead everywhere he goes—and he goes when nights are silent at WBBM. Furthermore Ben says the young gentleman has no conjugal entanglements.

Elsie Swendsen of Pickardsville, N. Dak., writes: "Can you tell me anything about Chubby Parker at WLS, Chicago; good looking, young, married etc.?" I'm telling you with a thumb-nail, Elsie. Yep, he's m. and has a daughter. Chubby writes his own songs and plays a little old five-string 'jo. He finished at Purdue after he had grown up with the tall corn in Iowa.

The best information I can get about Charlie Schultz and Lee Sims is that they are doing some independent booking in vaudeville and there is a rumor that they are working toward Broadway. You are right about G. R.

Although I have not at this moment a letter inquiring about Mr. Arthur F. Edes, chief announcer and program director at WEEI, the publicity director sends me his picture and thought you would like to see what a nice looking young chap he is. Like him? Hasn't he a boyish face? Never would suppose he was experienced enough to announce the intricate tongue-twisting titles and names associated with the selections played by a symphony. But Arthur F. Edes is the boy who can do it and did do it for the Boston Symphony all last season.

Mrs. W. H. Walker at Willows, Cal., would like to know something about Uncle John Daggett at KHJ, Los Angeles. You might still call him a blushing bride-groom and he has a most interesting history—too big and important to be considered in a paragraph like this. When the Los Angeles Times opened up KHJ they looked over the editorial staff to find a man with sufficient knowledge and experience to understand how to amuse the little listeners. You know a newspaper man is supposed to be rather hard boiled but Uncle John found a true vent to a repressed complex and the children took to him like a true uncle. Well it looks as though the up-shot of it all was, Uncle John found the right lady to say "yes."

Yes, Mr. Louis John Johnen has joined the staff of the WFBE station, recently moved to Cincinnati from Seymour, Ind. It is located on the Garfield Hotel and if you wish to find him, Leona E. Fischer, you may do so by turning your dials to 232.4, somewhat down from the old WLW wave. The station has been stepped up to 1,000 watts. Mr. Johnen has asked me to send the season's greetings to you and all of his other friends through this column. You have 'em.

Elizabeth Walling of Amber, Okla., has been very patiently waiting for information about some of her favorites at WFAA, Dallas. Charles Frederick Baker is tall, handsome and twenty-one. He's rather aloof toward us girls but Mr. L. B.

(Continued on page 4)

# GUYON PROVES SETS ARE FAULTY

## INTERFERENCE VERY OFTEN LONG AERIAL

### WGES OWNER PAYS ENGINEERS TO REMEDY EVILS

Gains Friendship of Chicago Fans by Educating Them to Proper Use of Radio Sets

CHICAGO.—What is believed to be a world record response by a Radio public to programs broadcast from one station is pouring in these days on Station WGES which is fighting attempts by Station WGN to have it vacate the wave length of 315.6 meters which it now occupies.

WGN, which occupies a wave length of 302 meters, forty kilocycles removed from WGES, originally obtained an injunction in court to restrain J. Louis Guyon, proprietor of WGES, from broadcasting on the 315.6-meter wave. Judge Francis Wilson later modified the injunction to permit WGES to broadcast on any wave

**YOU complain of interference, but how about shortening your antenna? In nine cases out of ten, Guyon engineers find listeners attempting the impossible; using antenna systems from fifty to 175 feet long—and then expecting to separate powerful local stations. Here are some tips in brief, given below in full:**

1. Shorten your aerial to thirty feet, including lead-in.
2. Change the position of your receiver. Try it in various parts of the room.
3. Loosen your antenna coupling, if your set permits.
4. Make a wave trap. It need not cost over \$1.25.
5. Inspect your tubes and connections. Read the instruction book that came with your receiver.

length that does not materially interfere with WGN. At this Mr. Guyon returned WGES to its 315.6-meter and resumed broadcasting. After some weeks WGN obtained from Judge Wilson an order on J. Louis Guyon to show cause why he was not in contempt of court, the claim of WGN's managers being that WGES was causing interference again.

**Guyon Engineers Fix Faulty Sets**  
When WGES made its return to the air, J. Louis Guyon made a series of addresses from WGES asking the Radio public to support him in his fight for the freedom of the air and asking those persons whose faulty sets caused interference between WGN and WGES, to give him an opportunity to send Radio Engineers to their homes to correct the mechanical errors.

Letters from persons who followed Mr. Guyon's instructions in removing interference and who now can get WGES and WGN with plenty of room between, are many.

**Fight Beneficial to Public**  
Mr. Guyon in one of his talks said, "The average Radio set owner who gets a few high-powered stations on his set is content. He does not realize that with care given to his machine and the acquisition of a little skill he can bring many more stations. Educate him in the easy and simple ways of eliminating interference and his pleasure and joy in Radio is increased. If my fight to keep on the air and to prevent monopoly of this avenue of free speech has done nothing else, it has at least educated thousands of listeners to a fuller enjoyment of Radio."

**Guyon Asks Fair Test of Sets**  
"Boiled down to its essence the contest between WGN and WGES is this: Is forty kilocycles enough separation between stations?"

"My answer has been that forty kilocycles is enough separation; that forty kilocycles or LESS separates twenty-five out of the thirty-one licensed stations in the Chicago field. Scores of authorities and leading engineers bear me out in this. Many authorities specify thirty kilocycles or twenty kilocycles as enough, and some say ten is ample."

"Interference exists on faulty sets. My plea has been to have these sets fixed and my argument has been that no owner of such a set should allow himself to be drawn into either side of the controversy until he has had engineers look over his Radio to find where its errors lie."

The Guyon engineers were interviewed. These men, who have been doing a great work in improving Chicago Radio installations so that their owners may separate such stations as WGN and WGES, reported as follows:

## EUNICE HOFFER, WBBM ORGANIST



Like St. Cecilia at the organ, Eunice Hoffer of WBBM sits serene as she entertains with the Barton of the Stewart-Warner Air Theater. Yes, she's single. Line forms on the right.

### Hints to Improve Reception

"In about nine cases out of ten we find that the antenna system is at fault. Most antennas are entirely too long. People buy a set, take it home and hook it to an old aerial. We find aerials up to 175 feet long in use. We would suggest about thirty feet, including the lead-in, and very seldom more than fifty feet. We recommend the use of two antennas with a switch, one long and one short; the short aerial for selectivity, the long for distance."

"We have also learned that by simply changing the position of the receiving set, we have been able to totally eliminate interference in a number of cases. A set with a metal panel should be placed with the broad side of the panel faced toward the station which the listener wants to eliminate."

"A set using a circuit arrangement similar to the Bremer Tully, with variable antenna coupling, can be made unbelievably selective by 'loosening' the coupling in the antenna circuit."

### How to Make \$1.25 Wave Trap

"Finally, we assemble a wave trap from the cheapest parts obtainable for \$1.25; \$1.00 for the 23-plate variable condenser and 25c for the radio frequency transformer. We connect the large coil or secondary of the transformer across the 23-plate condenser, and then hook one end of the small coil or primary to the antenna binding post of the receiver. The other end of the small coil is hooked to the antenna lead-in. It always works."

"For a super-heterodyne, the wave trap's small coil or primary is put in (Continued on page 28)"

## WHOZITEERS WORLD OVER REPORTS SHOW

### ENGLAND AND ORMISTON ENTHUSED ABOUT IT

Not Too Late to Start—Players Warned Not to Send in Solutions Before Close of Contest

(Whozits on Pages 10, 12 and 13)

Whozit is growing. China and Japan are still to be heard from, but a telegram from WPG, the Atlantic City Whoozit station, states, "Received fifty-two letters from Europe by one mail, twenty-six reported hearing our first Whozit broadcast and inquired particulars."

All over the United States and Canada folks are playing the game of Whozit. It has even become identified with the leading news dispatches.

When Charles Blake, reporter for the Chicago Herald and Examiner, discovered and apprehended the elusive Mr. Ormiston and began to question the latter concern-

## RADIO CLUBS NOTICE! SEND US YOUR NAMES

RADIO DIGEST desires as nearly complete a list of all Radio clubs as possible. To help make this list, the corresponding officers are asked to send the name of their club, number of members, and mailing address at once to the Radio Club Editor, Radio Digest, 510 N. Dearborn Street, Chicago.

Each club sending in this information in due course will receive a mimeographed list of all Radio clubs and their addresses which this publication has on file. Other valuable information will follow.

ing his companion in the cottage at Carmel-by-the-Sea he answered with "wise cracks" quoted as follows in the Los Angeles Evening Herald:

Q. Were you alone when you left Oakland?

A. That sounds like a new jazz tune by Irving Berlin.

Q. If "Miss X" was not Mrs. McPherson who was it?

A. Are you referring to the new Radio Whozit game?

Q. Where is Miss X now?

A. Between W and Y and always was.

Q. Have you heard from her recently?

A. What do you mean by recently? How long is a piece of string?

And so it went. And so it goes. A letter from a vaudeville team in New York requests permission to use the name of "Whozit" in a stage stunt. The request was granted.

### Still Opportunity to Begin

From Seattle to Jacksonville and from Los Angeles to New York and Boston, twenty-four of the greater broadcasting stations are playing the game for the \$26,000 in prizes to be awarded Whoziteers—those who listen and play.

For those who have not yet joined the game there is still an opportunity. Order the back copies and begin now. One thousand dollars will be awarded by Radio Digest to the winners at each of the twenty-four broadcasting stations. There will be two grand prizes of \$1,000 each for the ones who have the highest score of all twenty-four stations. The rules of the game and full information as to conditions appear on page 15 of this issue of Radio Digest. Schedule appears at left.

The rules state specifically that all assembled Whozit pictures are to be held until the close of the series. This fact is emphasized here because quite a number of Whozit pictures have been sent in and are, of course, incomplete.

### Don't Drop Out; Stick to It!

It looks easy to cut the pictures apart and assemble them correctly and it is easy. But one of the qualities for a successful Whoziteer is "stick-to-it-iveness." That may be taken both literally and figuratively. You stick the segments together in their proper order and you stick to the game until the last picture in the eighth game is complete. The losers will be those who drop out before the game is finished.

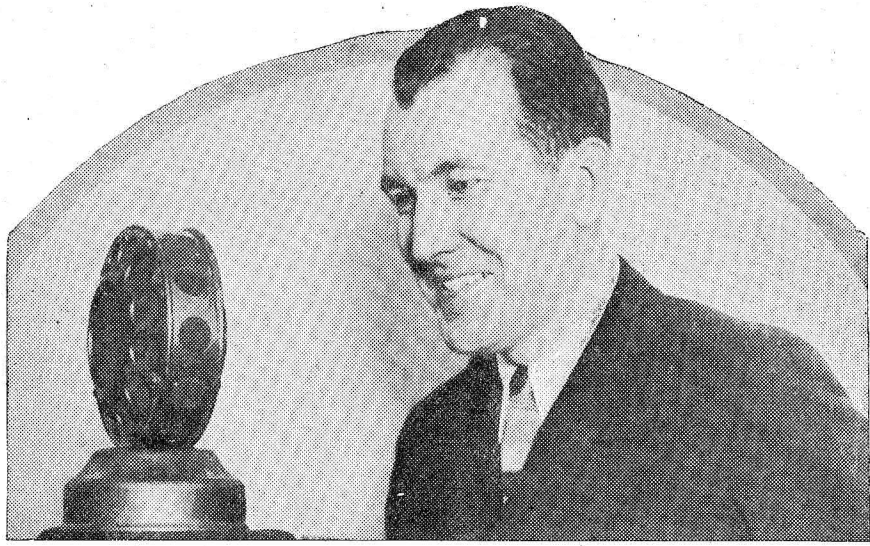
Whozit clubs and Whozit parties are growing in vogue and many letters are being received from those who have found a neighborhood Whozit party not only a novelty but an intensely interesting game of wits. The host or hostess usually supplies the guests with little game tables, scissors, copies of Radio Digest, paste and pencils. The first ones through win the trophies.

## WHOZIT SCHEDULE JANUARY 1-15

Eastern	Central	Mountain	Pacific	Eastern	Central	Mountain	Pacific
12 n.	11	10	9	9:30 p.m.	8:30	7:30	6:30
WHT (399.8) Daily except Sundays.	WMAK (265.6) Daily.			CKY (384.4) Monday, Wednesday.	WHB (365.6) Tuesday, Thursday.		
6:50 p.m.	5:50	4:50	3:50	10	9	8	7
WOW (526) Daily.				WHK (272.6) Mondays, Wednesdays.	WSOE (245.9) Monday.		
7	6	5	4	10:15	9:15	8:15	7:15
WOC (483.6) Daily.				KOA (322.4) Friday.	WMCA (340.7) Thursdays.		
7:15	6:15	5:15	4:15	10:30	9:30	8:30	7:30
WMAK (265.6) Daily.				WMC (499.7) Thursday.	11	10	9
7:30	6:30	5:30	4:30	11	10	9	8
WHK (272.6) Fridays.	WMCA (340.7) Fridays, Saturday.			KMOX (280.2) Daily.	KTHS (374.8) Daily.		
7:50	6:50	5:50	4:50	WHK (272.6) Tuesdays.	WHT (399.8) Daily except Monday.	WLW (422.3) Daily except Friday.	WOOD (242) Daily (Off air temporarily).
WJAX (336.9) Daily except Thursdays.				11:30	10:30	9:30	8:30
8	7	6	5	KIR (384.4) Daily.	WMAK (265.6) Tuesday.		
KVOO (374.8) Daily except Sundays.	WHT (399.8) Daily ex Sun., Mon.	WMCA (340.7) Wednesday, Sunday.		12 m.	11	10	9
8:30	7:30	6:30	5:30	WHT (399.8) Daily except Monday.	WJR (516.9) Saturday.		
WPG (299.8) January 3 and 10.				12:05 a.m.	11:05	10:05	9:05
8:45	7:45	6:45	5:45	WHK (272.6) Saturdays.	1	12	11
WHB (365.6) Mon., Wed., Fri.				1	12	11	10
9	8	7	6	KVOO (374.8) Mon., Thurs., Sat.	WHB (365.6) Sunday.	1:15	12:15
CKY (384.4) Thursday, Saturday.	KPRC (296.9) Daily except Friday.	WHT (238) Daily except Mondays.	WJR (516.9) Monday, Wednesday.	WPG (299.8) January 7 and 14.	WSM (282.8) Mon., Wed., Fri., Sat	9:15	8:15
7:50	6:50	5:50	4:50	9:15	8:15	7:15	6:15
WMAK (265.6) Daily.				WNAC (431) Wednesdays.			



**MAKES HIT ANNOUNCING SLUGFEST**



This was snapped as Warren Brown, Chicago sports editor, was announcing the title bout over WEBH-WJJD in which Mickey Walker won the title of Middleweight champion. As a result of his work on this event, Mr. Brown has been applauded from coast to coast.

**FANS CROWN NEW SPORT ANNOUNCER**

**Mickey Walker Wins Middleweight Title and Warren Brown, Sports Editor, Wins Fame**

By Gene Rouse

CHICAGO.—Something happened in the ninth round of the middleweight championship bout at the Coliseum in Chicago December 3 when "Mickey" Walker floored the title holder "Tiger" Flowers—Mickey won himself a championship.

Something also happened in Radioland. Back of the microphone of WEBH and WJJD, America's twin stations, sat Warren Brown, sports editor of the Chicago Herald and Examiner. Through the preliminaries and through the main event Mr.

Brown kept up a running fire of droll comment and vivid description.

Along with it, through a battery of especially arranged microphones, sifted the howls and cheers of the 10,000 spectators, the cries of cold drink vendors and the clang of the gong.

**Fan's Laud Announcing**

"Heard the cheering just as if I had been in the building—even the cold drink man calling his wares, etc. Mr. Brown kept us laughing with his comments," wrote Kelly Burwell, Jeff, Alabama.

"Appealing wit of Mr. Brown and his rare descriptive ability kept me in a state of joy. Today I feel like I had a huge night and—I did," said H. H. Treacchar, Galveston, Texas.

"Brown is as good as Will Rogers over the radio."—Mr. and Mrs. Edward Sundin, Moline, Ill.

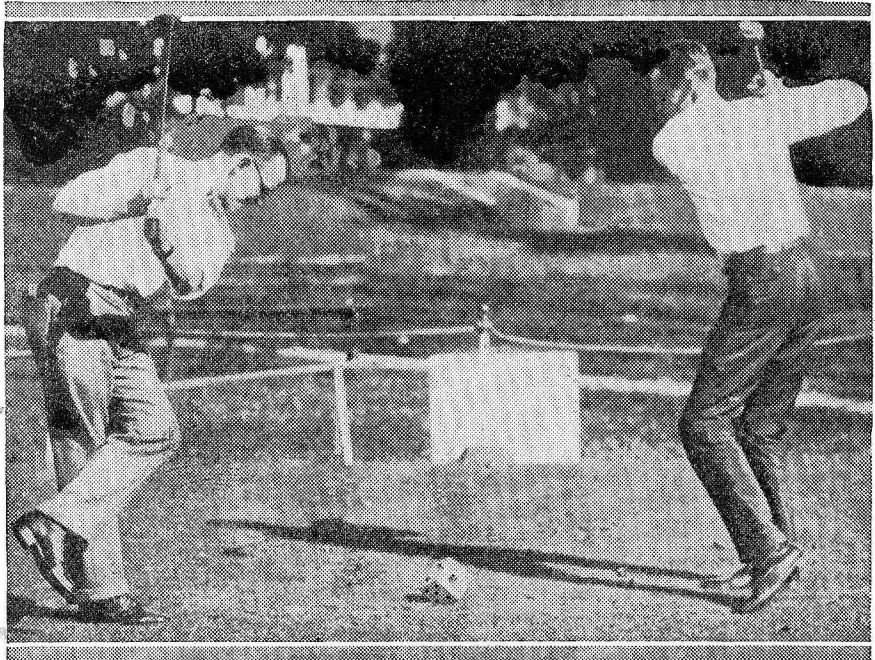
Thus did Radioland acclaim the new meteor and crowned him king of sport announcers. Letters on the broadcast have arrived from all over the United States and Canada and not a few, nor the majority, but every one mentioned the excellency of the announcer.

WEBH and WJJD, America's twin stations, are on the 370-meter wave band, operated by the Edgewater Beach Hotel-Loyal Order of Moose and the Palmer House, presenting Herald and Examiner programs exclusively. The program management is under Homer Hogan.

**WDAD Now 1,000-Watt Plant**

NASHVILLE, Tenn.—WDAD is getting out with its new 1,000-watt Western Electric set. Areas not covered before by WDAD are being heard from.

**HAY AND KAY INTRODUCE NEW WAY**



Messrs. Lambdin Kay, left, new African golf ball, center, and Judge George Hay, right (following the seven with his eye), as the three were engaged recently on one of Nashville's fairest fairways.

**F**RIENDS of the Radio reading audience you behold in the above picture an interesting illustration of a notable event—the origin of African Golf—with two of America's best known announcers at the knock-off. The lyrics may not be accurately reported but they were something like this: (make your own music).

*Said Lambdin Kay to Old Judge Hay,  
"I'll shoot you dice today."  
"Nay, nay," said Hay to Lambdin Kay,  
"But a game of golf I'll play."*

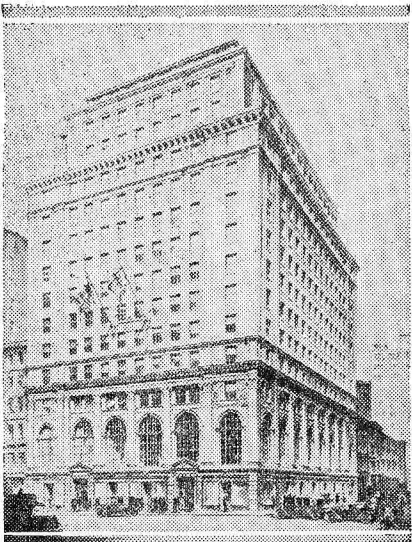
*Then said Kay of WSE,  
"That's a challenge to me."  
"Quite right," said Hay, as up spoke he,  
"I'll meet you at the tee."*

*Now, what to do, what to do?  
They both began to stew—  
And out o' the brew, I'm telling you,  
That African Golf came true.*

*And Kay and Hay that very day  
Started the good fairway  
By whacking the whey from a cube of gray—  
And NEITHER had to pay.*

And so you see that dull thud you thought you heard was not the collapse of the grand piano. The boys simply had hoisted their golf hammers over their brawny backs and knocked the block off

**Ether Scraper**

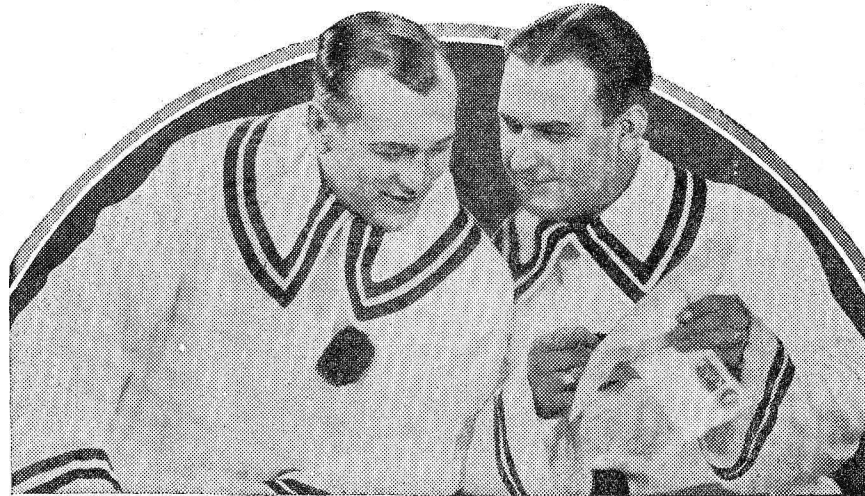


**I**N all probability the greatest "sky scraper" ever conceived will go into commission at 711 Fifth Avenue, New York City, June 1, 1927. Although this ultra modern "sky scraper" will be but fifteen stories high it will touch the skies around the world for it will be the building constructed especially for the National Broadcasting company.

This is believed to be the first metropolitan office and studio building devoted to such a purpose. The four upper floors will include eight broadcasting studios. An auditorium studio large enough to seat one hundred and fifty musicians will occupy the most of the top floor. Visiting guests will also be accommodated on this floor. A novel method of construction will permit those on the thirteenth floor to see into studios on the floor below through glass floors.

Merlin H. Aylesworth, president of the National Broadcasting Company, states that under the new plan the recently combined broadcasters, WEA and WJZ, will cooperate to put on programs of the finest talent to be obtained. Both stations will be heard over chains of national extent. The general plan calls for a central broadcasting plant from which a system of studios will radiate fan-wise. On the rim of this circle will be the artists' and public reception rooms. Each studio will be served by an adjacent control room. The antenna towers are to be located many miles distant.

**LOCATE FORD AND GLENN AT WLW**



**"O**H SKIN-NAY! Ooo-hoo! C'mon over! Ford 'n Glenn! We got 'em! Hurry quick like ever' thing! We found 'em again!"

"Aw! Whatcha talkin' about? Doncha think I know they ain't at WLS no more? What you got ain't Ford 'n Glenn. There ain't no more Ford 'n Glenn."

"Gee whillikers! There is too! You c'mon over an' just see if there ain't. My mother got 'em on another wave, she says. An' it's almost like WLS only it's WLW an' they're at the Crosley Radios at Cincinnati. C'mon NOW if you don't believe it an' I'll show yu!"

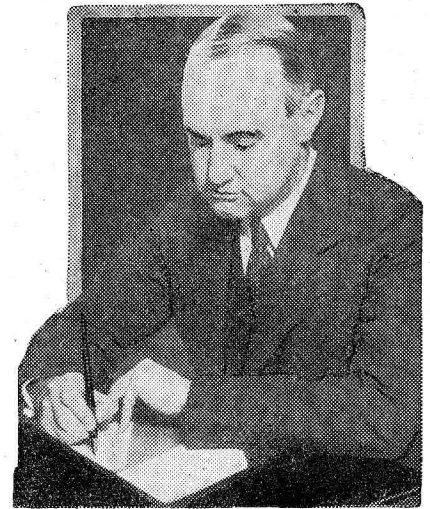
"Aw, betcha it's somebody else. Ain't nobody ken fool me 'bout Ford 'n Glenn. I'm comin' tu see."

Well sir, lo and behold and sure enough if wasn't Ford and Glenn! And here they are in a new picture just as they look in their new Woodshed show and for the Lullaby Hour at WLW, Cincinnati. What

do you know about that! They picked up their toys and their safety pins and their Noah's Ark and scampered right out of Chicago all the way down to Cincinnati.

Sure you can hear 'em. Just move the dials up to 422.3 meters if you live a long ways from Cincinnati and give 'em a little more volume. Course they weren't mad at anybody. But don't you suppose there are other little boys and girls in these United States who'd like to get acquainted with Ford 'n Glenn? You can't expect a circus to keep on playing at the same place forever and ever can you? Well, Ford and Glenn got down to their new Woodshed theater just in time to put on a great Christmas party for the WLW children. They are going to stay there until next summer and then they are going to travel around like they did last summer and visit the children at the theaters in the different towns, ain't you glad?

**MAN BEHIND BALKITE HOUR IS MR. TROXEL**



J. M. Troxel

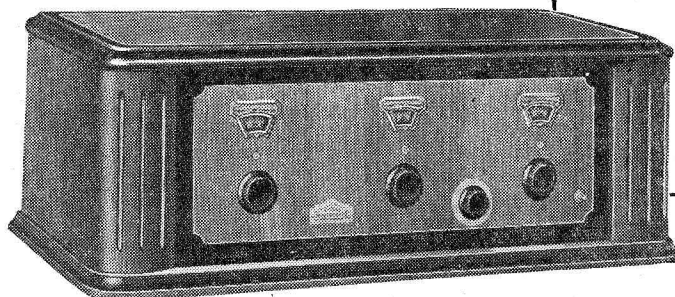
**S**OMETIMES we range around the dials, pausing for a minute here and another minute there, hoping that maybe we will strike something new and different that will be especially good. And then out of the ranks comes a special program, the particular enterprise of some individual or corporation concerned in presenting Radio super-excellence. So it happens that at the present time we enjoy the Balkite Hour every Saturday night over the WEA chain. This is the particular pride and joy of J. M. Troxel, president of the Fansteel Products company, manufacturers of the Balkite Radio Power Units. Mr. Troxel and his associates have taken intense personal interest in this program. No expense has been spared to make it truly de luxe through the artistic resources of Walter Damrosch and the New York Symphony. It has thus been made possible for Radio listeners throughout the United States and the surrounding area to enjoy a quality of music such as only the great New York Symphony can produce.

The photo shows Mr. Troxel in the act of signing the contract for the Balkite Hour.

# Mass Production

methods and tremendous purchasing power brought to Amrad and applied to building Neutrodyne a year ago by Powel Crosley, Jr. make available to the Public a 5 tube Neutrodyne at \$60

In this 5 tube battery type Neutrodyne at \$60 great engineering skill is manifest in the splendid performance of the set. Cabinet and trimmings are all any purchaser could ask—beautifully finished and appointed. Recessed dials behind windows and delicately adjusted vernier controls are distinctive features.

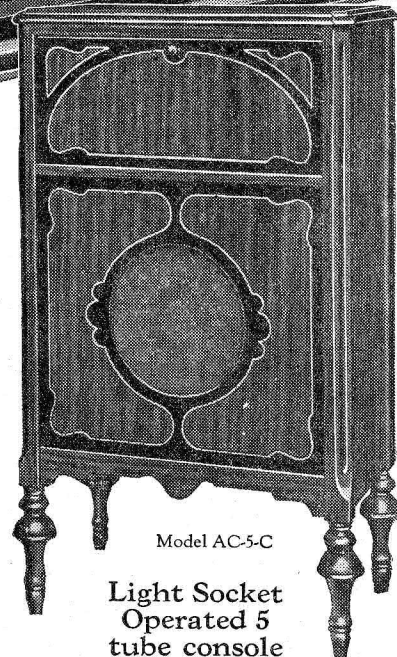
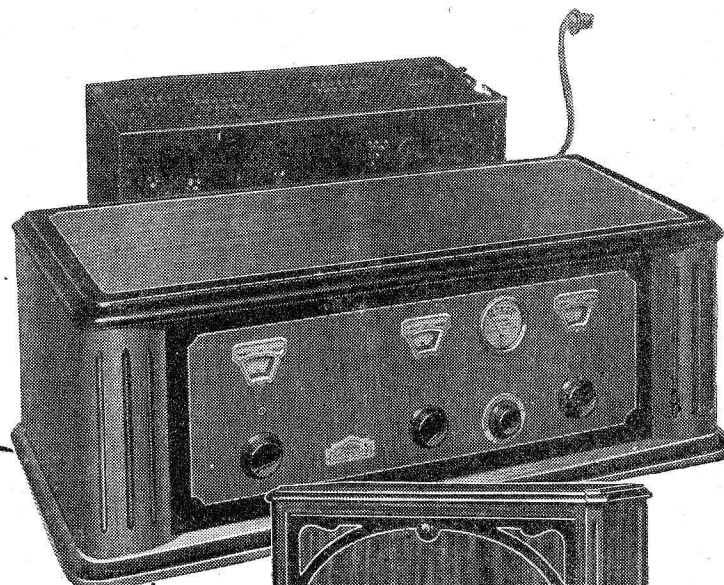


Cone Table for table models S-522 and AC-5 with Crosley Musicone built in. Ample room for batteries or power unit. \$32.

## —and a light socket operated Neutrodyne at \$150

This is Amrad's crowning achievement. A power unit, using current direct from your light socket on wall or from table lamp furnishes A, B and C current direct to the 5 tube Neutrodyne pictured at the right. This power unit is pictured directly behind the set.

No batteries—nothing to charge. An entirely new development in power supply. Amazing Mershon Condensers contribute to its great efficiency and compactness. TESTED BY CONSTANT USE IN HOMES FOR OVER A YEAR. Price of receiver \$65. Price of power unit separately \$85.



Model AC-5-C

Light Socket Operated 5 tube console

A beautiful cabinet in two tone finish mahogany. Stands 40 inches high. Genuine Crosley Musicone built in. Equipped with 5 tube battery type set \$110—with lamp socket set and power unit...\$200.

### Add a Mershon Condenser to Your B eliminator for Super-B Current supply



#### 30 MFD DUOTYPE

Filtering out light socket current hum is but part of the job. Eliminators must have STORAGE capacity to prevent "chopping off" of loud or sustained notes. The Mershon Condenser acts as a reservoir and STORES energy for sudden heavy drains on plate current. Does the work of expensive storage battery electrically rather than chemically. B eliminator connected with this condenser gives the excellent tone reproduction of fresh B batteries.

Mershon Electric Condenser 15 mfd capacity each half. 30 mfd total capacity. Type D-15-30. Maximum rating 300 volts D. C. If punctured can be repaired and need not be thrown away.

\$8

# AMRAD

AMRAD CORPORATION  
Medford Hillside, Mass. Harold J. Power, Pres.  
Write Dept. 3A7 for Catalog.

# NEUTRODYNES

# How to Fix Sets for Results

By "KING MILO" GURNEY

Part I.

**A**S I take my pen in hand to write each of the little boys and girls between the ages of six and sixty who "jest new there wussent eny Sandy Claws," the uppermost thought in my mind is—how in heck Santy guessed that you wanted a Radio, 'n besides, how did he get down th' chimbley, that's what I want to know?

But he did—you have it, and that's that, hence, methinks you would now be interested in learning the proper method for the installation and care. It comes to you a wondrous toy, but not to be toyed with. It's a beautiful cabinet containing a wealth of entertainment, yet each day fearing that you may decide to take it apart—just to see where the music comes from. Please never be guilty of doing such an unkind act.

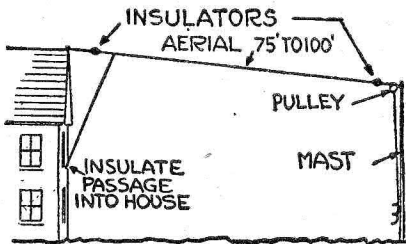
In passing from the realm of levity to the more serious side of the subject, let us remark that every Radio receiver is justly entitled to a reasonable amount of care in its installation. It should be correctly installed and intelligently operated. In like measure, its accessories can remain efficient only when subject to periodic inspection. Do not attempt to be your own inspector. Your Radio dealer is the only one who should be allowed to keep your set in order. It's his business to know what to do and when to do it.

Altogether too many purchasers of receivers gain the impression that the instruction booklet which comes with the set is only a part of the packing. Of course, you are not of that type; you will read it from "kivver to kivver" and find the reading very beneficial.

As the nominal head of your household, friend wife and the kiddies will probably allow you to exhibit that which you have told them you knew about Radio. Therefore, in strict confidence I shall help you, Brother—so hie thyself to seclusion with this Bible that you may emerge possessing an indisputable air of authority.

### How to Erect Antenna

As the major portion of Radios are designed to operate from an outside antenna, the suggested method for its installation will be given first. Practically all authorities are in agreement that, for best all-around results, an antenna comprising a No. 14 single strand copper wire, which may be either bare or enameled, is preferred. Its over-all length, inclusive of "lead-in," should not exceed 75 feet, while its height (from the ground) should if possible be not less than 35 feet. Such an antenna should be strung fairly taut in order that it may swing but little if at all during a high wind. It must not be allowed to come in contact with roofs or metallic objects and should be fastened to glass, porcelain or other types of insulators at each of its extreme ends. Such insulators in turn should be securely



anchored to the antenna's supporting medium (such as poles), while great care should be given to make sure that the antenna is installed for permanency.

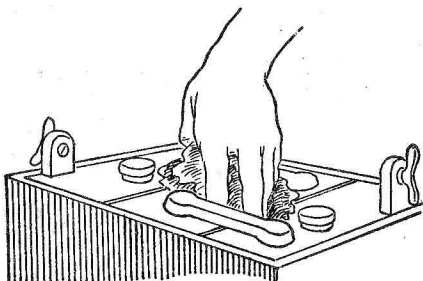
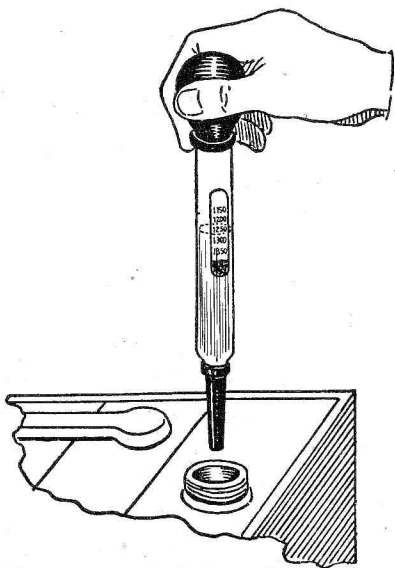
### Lead-In and Ground

The "lead-in" is the wire that extends from one's antenna to the receiving set. In each instance it should be of the same size wire as the aerial. It also should be copper wire and insulated.

Do not neglect to make a soldered connection at the point where the lead-in attaches to the antenna. This is important! This is not to be construed as meaning that you will promise to solder it later, because such promises are seldom, if ever, kept. A job worth doing is worth doing well. A 10-cent soldering iron, together with a lot of "elbow grease," often works wonders toward one's continued enjoyment of excellent Radio reception.

One of Radio's great truths is found in the assertion that "No Radio receiver is any better than its ground connection." Of the countless number of methods employed for the securing of a suitable ground connection, that which is to be preferred is one wherein the wire from the ground terminal of the receiver attaches directly to a copper plate buried several feet in the ground, and moist ground when practical.

To provide such a ground very often entails considerable work, and in metropolitan areas grounds of this character are next to impossible owing to the populace living like sardines. Where the con-



Sketch at left illustrates method of taking a hydrometer reading of the storage A battery. Note the vent cap hole, also the float in the hydrometer tube. Above sketch shows how to clean top of battery with old rag.

ditions are such that earth grounds are not feasible, it is then advisable to attach the ground wire with a good ground clamp to a cold water pipe. Attach to a radiator or hot water pipe as a last resort.

In place of using a buried copper plate as an earth ground, one may drive a galvanized one-inch pipe into the ground to a depth of about six feet. In doing this leave about six inches of the pipe above ground, and to this exposed portion solder the ground wire after first having tightly wrapped or coiled six to ten turns of the exposed wire around the pipe.

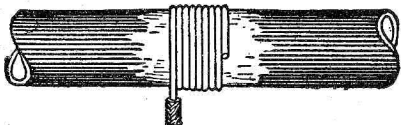
Neatness demands that this ground wire be insulated and you are cautioned against running it in other than as straight a line to the receiver as possible.

### A Word About Batteries

The new owner of a Radio is often befuddled with the terminology accorded the batteries which are required. Batteries for use with Radio receivers are sold under three classifications, viz: "A," "B" and "C."

Any Radio battery which supplies the current required for the heating of the filament of the vacuum tube is termed an "A" battery. Those which are required to supply current to the plates of the tubes are known as "B" batteries and are also available in both wet and dry types as is the "A" battery.

The "C" battery is only supplied in that form known to the trade as dry cell types, and its duty is that of supplying a "negative bias to the grids of the tubes," or perhaps a somewhat less technical term or explanation would be to say that a "C" battery is used to counteract the tendency of the grid becoming positive, which to the layman is no doubt just as poor an explanation of the function of a "C" battery. And now, Brother, you know the



The sketch at the left illustrates a proper outside antenna installation. Remember—the shorter the aerial and lead-in, the more selective the set. Above sketch shows how to clean pipe and wrap the wire about it just before making soldered ground connection.

definition of A, B and C batteries, or else do not care to know.

### Storage "A" Batteries

While there are exceptions, the standard type of A battery is that known as the "wet" or "storage" type. These vary little from those used as starting and lighting batteries in automobiles except, in general, the plates comprising them are not as thick or rugged as those designed for automobiles.

Their voltage should never exceed six volts, and probably the most popular capacities are the 100 or 120 ampere hour batteries. A batteries do not require a high voltage output but do require a current (amperes) value capable of supplying around two to three amperes of current per hour for the operation of the receiver.

The 100 ampere hour size has thus become popular because it will supply that average Radio receiver with current for a period of about two weeks before requiring recharging. This period is not definite but rather an average, it being essential that until one has determined from frequent tests the approximate period when the "A" battery needs recharging, that a free use of a battery "hydrometer" be made.

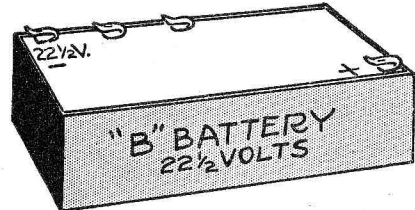
### Use of "Hydrometer"

Such a "hydrometer" may be purchased from any radio or battery dealer and is as essential for the determination of the condition of an A battery as a tail is to a happy dog. To make such hydrometer tests, remove the vent or filler caps (the

oration. It is important that the water level not be allowed to drop below the plates of the battery, and it is very much better practice if this level is kept slightly (one quarter inch) above the plates. In adding water to a storage cell always use "distilled water." No, sir, tap or well water will not do!

Furthermore, do not let anyone convince you that your battery requires new "electrolyte." You need never worry relative to what "electrolyte" is, because telling you might lead to trouble. The correct method to pursue in the event of your feeling something is wrong is to take the battery to a responsible service station.

The top and terminals of a battery should be kept clean and free from corrosion. Steal your better seven-eighths' old dish rag to clean off the top of the



A typical 22 1/2-volt "block" of B battery. The 45-volt block is larger. Most B blocks are made nowadays to stand vertically.

battery, and then clean away the accumulation which may have occurred at one or both of the battery terminals. But throw away the rag when you are through.

### "B" Batteries

"B" batteries as before noted are required for supplying the plate voltage to the vacuum tubes and are offered the purchaser in both wet and dry types. Of the two, the dry cell type is the more popular, hence it will be discussed. While this battery supplies direct current to the plates it differs from the direct current furnished by an A battery in the following respect: It is designed to furnish a very small current (amperes) output with a high voltage (volts) supply.

Standard batteries of the B class are usually offered in units or "blocks" of the following voltages: 22 1/2 and 45 volts. (Continued on page 9)



(3) JACK LITTLE  
These Pictures Are 11 x 14  
First Time Offered

### Free Photogravures of Your Favorite Artists

By special arrangement Radio Digest is now able to offer its readers a great opportunity to secure a selection of twelve fine photogravures of their favorite Radio stars. These photogravures can only be compared with the finest photos obtainable. See coupon below.

### Select Your Favorites From the Gallery of Radio Stars

1 Wendell Hall, king of ukulele ditties	20 Vincent Lopez, No. 1 Pennsylvania orchestra
2 Graham McNamee, 1925 Gold Cup announcer	21 E. L. Tyson, pleasing voice at WWJ
3 Jack Little, popular wandering balladist	22 Bert Davis, "Clown of the Air"
4 Billy E. Van, the Sunshine Man	23 Art Gillham, "The Whispering Pianist"
5 Conn-Sanders' Original "Nighthawks"	24 The Sunflower Girl of WBAP
6 George Hay, 1924 Gold Cup announcer	25 Harry Ehrhart, "Dream Daddy" of WLIT
7 Ford and Glenn, Lullaby Boys of WLS	26 Correll and Gosden of "Kinky Kids Parade" fame, at WEBB and other stations.
8 "Roxy" Rothafel of WEAJ chain fame	27 Norman Brokenshire, popular at WRC, WJZ
9 The Hired Hand, famous "Substitute Announcer" of WBAP	28 Jane Novak, Blues Singer of Twin Cities, WCCO
10 Jerry Sullivan, of Chi-CAW-go fame.	29 Jean Sargent, the original, now at WHT
11 Bob Emery, Big Brother of WEEI	30 Ralph Emerson, popular organist at WLS
12 "Bill" W. G. Hay, ex-KFKX, now of WLIB	31 Edna Adams, of KPRC
13 Happiness Boys, jovial singers of WEAJ	32 Pat Barnes, vaudeville announcer at WHT
14 Leo Fitzpatrick, "Little Colonel" of WSB	33 Walter Wilson, "Uncle Bob" of KYW
15 Henry Field, 1925 Gold Cup runner-up	34 Ray-O-Vac Twins, known country-wide
16 Al Carney, organ favorite at WHT	35 Art Linick, KYW's Mrs. Schlagenhauer
17 Earl E. May, 1926 Gold Cup Announcer.	36 Fred Hamm of WTAS, now WLIB, fame

Suitable for Framing or Placing in Your Album

### Send Coupon Now

Your Radio set gives you their voices. Their pictures add very much to your complete entertainment.

**ACT TODAY**  
RADIO DIGEST PUBLISHING CO.  
510 N. Dearborn St., Chicago, Ill.

Radio Digest, 510 N. Dearborn St., 1-1-27  
Chicago, Ill.

I am enclosing Three Dollars for a One Year's Subscription to Radio Digest. I Am to Receive Free the Selection of Twelve Photogravures Listed Below. This Offer Good Only on Subscriptions Sent Direct.

Name .....

Address .....

City .....

In order to insure prompt shipment, please give us fourteen numbers, the last two of which we may substitute if necessary. Order by Number.

# GOODY GOODY GOODY GIRL

LIKE a House of Cards Lois Sylvester Finds All the Contacts She Had Made in Chicago Come Tumbling Down

By MERLIN MOORE TAYLOR

**I**RKED by the dull monotony of life in the little town of Paradise, Lois Sylvester started out to visit a friend in a neighboring town. A care-free neighbor boy, Herbie Coles, offered her a lift in his car. She slapped him when he tried to kiss her. Aboard the train, after dodging her vigilant stepfather at the station, she meets Raymond Lancaster and Mrs. Mildred Gayton, each acquainted with the other and chance fellow passengers on the train. An accident prevents Lois from leaving the train until she reaches Chicago. She becomes the guest of Mrs. Gayton who furnishes her with pretty clothes and conveys her into the swirling night life of the city. There she finds a bitter under-surface enmity between Mrs. Gayton's intimate friend, Neil Becker, and Raymond Lancaster. They all go to the races. Lois places a bet on a horse favored by Lancaster against the advice of Becker, to whom she entrusts the money for the bet. Herbie Coles appears and bets his last dollar on Becker's favorite. Herbie loses and Lois wins big odds. Before she can get the money she is taken away by Herbie. They are on some mysterious errand that requires speed. Lois doesn't know what it is all about, even when they are arrested for speeding, taken to a village jail and Herbie runs away leaving her to stand the gaff alone. She puts in a call for Lancaster. Herbie had told the chief she is a friend of Victor Jermin, a member of Becker's crowd. Lancaster rescues Lois from the little jail while the whole force is out chasing bootleggers. While he is taking her back to Mrs. Gayton's he attempts to embrace her. She repulses him. He confesses that he loves her and then reproaches her for trying to trap him. He explains that Becker has told him she was merely posing as an innocent country girl to compromise and blackmail him. She is stunned by this information and barely answers as she jumps out of Lancaster's car and runs up the steps to her friend's apartment. Neil Becker took the Goody Goody girl's charges complacently. Seeing that further subterfuge would avail nothing, he tried to win her to take Mildred's place and was instantly rebuffed. Then he attempted brute submission and Lois smashed his arm with his cane. Mildred rushed in and accused the girl of trying to usurp her position as mistress of the Gayton establishment. Then Lois packed up her own things and ran away. She was assisted by the maid who directed her to the boarding house of a relative. From here Lois started out to find employment as singer in the McManus cafe.

## CHAPTER XII A Proposition

**T**HE great new cabaret on the South Side when she had visited it by night had been gay; filled with life and music and laughter. When Lois called there the next day in search of McManus it was in the hands of cleaners and others getting it ready for another night—a dull, drab, cavernous place for all the garish decorations that glittered so brilliantly under the electric lights.

Lois was directed down a hallway to McManus' office and the manager himself opened the door and eyed her curiously. "What do you want?" he demanded.

It was plain he did not recognize her. She recalled her identity to him. The effect was surprising. He smothered an exclamation, drew her quickly into the office, waved her to a chair and said excitedly through a half-opened door to someone in an inner room: "The Sylvester girl's found her way here. Can you beat it?"

A moment later Victor Jermin was framed in the doorway. He came quickly toward her. "This is a relief," he said. "We thought you'd been arrested. How did you know to come here? Did Mildred send you? It would have been better to have phoned first."

"I don't know what you mean," she replied, bewildered. "I came here to ask Mr. McManus about that job he offered me. I left Mrs. Gayton's last night and—"

"Haven't you seen the morning papers?"

"No; was there something—?"

Jermin snatched up a crumpled newspaper from a table and thrust it into her hands. "Read that," he commanded, and pointed to screaming headlines: "RUM

RUNNERS BATTLE POLICE; TWO ARE SLAIN, FIVE WOUNDED." A smaller line, also emblazoned across the page, read: "Girl decoy, Nabbed for Speeding, Escapes Village Cell."

**S**HE skimmed rapidly through the accompanying text. Illicit liquor trucks, moving swiftly along country roads, had been ambushed by highway and village police. Death and injury had been the outcome of the gun battle that had ensued. The trucks had been seized, the men accompanying them captured. There was also an inaccurate, highly-colored account of her own arrest, and the reporters had swallowed whole the theory of the walrus-mustached chief that she was connected with the other affair.

Lois lifted hurt, questioning eyes to Jermin's face.

"Your little playmate, Coles, gummed up the works," he said. "I won't go into details, but if he'd had sense enough not to speed on a main highway, if he'd kept my name out of his talk at the station, if he'd got to a certain place in time—none of this," he jabbed a finger at the newspaper, "none of this would have happened."

"It says here that I'm being sought in the hopes that I can be made to talk, to tell on the higher-ups—why, I don't know

anything. I didn't know even that you are a—a—"

"I don't mind being called what I am. The thing now is to keep you from being arrested. In the end probably nothing would come of it, but meanwhile—Mildred phoned me today that you'd skipped out, that she didn't expect you back—"

"She's right. I'm through with all her kind forever. I'm on my own from this time on."

"Spunky, that, but what are you going to do?"

"Get me a job, singing preferably, but anything that will give me a living while I study, perfect myself in music. I thought perhaps Mr. McManus would give me a chance."

**V**ICTOR JERMIN shook his head.

"That's out," he said emphatically. "It would be courting arrest. Someone would recognize you as having been around with me a great deal lately, you'd be identified as the girl pinched by that hick motorcycle cop and you'd find yourself in a police station in no time."

"But I haven't done anything."

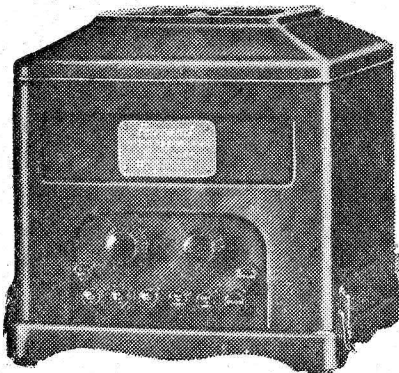
"Except break jail. Leaving ten dollars to pay a fine for speeding—clever idea, and I must give you back that ten— isn't calculated to settle the bill. The police in that village are sore at me—"

## THE LATEST IN RADIO ACCESSORIES

### Farrand B Eliminator

**A** HEAVY duty B eliminator marking an advance in B power engineering, only paralleled by that of the loud speaker made by the same concern, has been brought forth by the Farrand Manufacturing Co. An output of 75 milliamperes of current, when most B eliminators furnish 60 or less, is the reason for the name, "heavy duty."

The new Farrand B power unit, shown herewith, will operate a large multiple tube set without overloading. Its voltages are 15 to 70 on detector tube, 60 to 100 volts on radio frequency tubes, and 135 to 200 volts on the last audio stage—equivalent to one stage of power amplification.



No hum is heard, even on head phones, with this eliminator in use. It is silent, troubleproof, foolproof and has nothing to wear out. It requires no acid or water. It employs only one rectifying tube, either a CX-313 or UX-213, the life of which should be at least two years. The Farrand B eliminator operates from ordinary 60-cycle, 110-volt house lighting alternating current and consumes no more electricity than a 25-watt lamp.

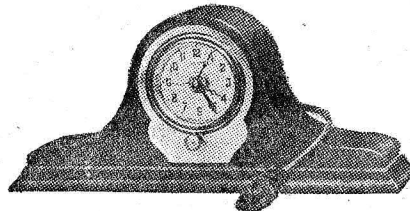
The unit is attractive in appearance, neat and compact. Its size is but 8 3/4 by 9 1/4 by 9 inches, and its metal case is finished in a beautiful bronze.

### Time-Lite Radio Control Clock

**S**OMETHING brand new in the line of Radio accessories is the Time-Lite, shown herewith, a Radio control clock that starts and stops your receiving set automatically. With it connected in the battery switch circuit of one's receiver, the set becomes almost human.

Time-Lite starts, stops and restarts your set without attention at any speci-

fied times. All you need do is set it, similar to the method you would an alarm clock. The new device automatically turns off the set should you forget, thus saving tubes and power supply. Day or night, Time-Lite is on guard and brings in the program you have it set for.

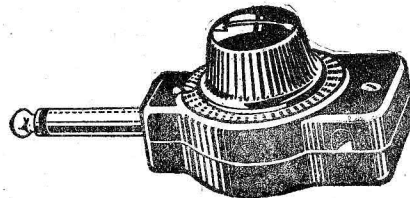


It consumes no electric current and costs nothing to operate. The clock keeps accurate time, and is as easy to attach to one's set as to put in a tube. The device is beautifully designed and encased in a marine type clock base, worthy of the most lavish receiver cabinets.

Time-Lite is the invention of Louis Herzog, of the Time-Lite Clock Corp., New York City.

### Permits Using Two Speakers

**I**T HAS long been recognized that no single loud speaker gives perfect reproduction over the entire musical scale, but tends to amplify some tones more than others. The wise fan in search of greatest fidelity of reproduction, therefore, will use two speakers and depend upon their different characteristics to



even up amplification throughout the entire tone range.

Set owners who have tried the combination of a good cone and a good horn type speaker, or two horn type speakers with different characteristics, report a marked improvement in tone. The home experimenter frequently has difficulty in matching the two speakers used, however. This difficulty can be corrected with the new cord type Centralab Modu-Plug, shown herewith, either by connecting one plug to each speaker so as to control their tone volume entirely independent of each other, or by connecting a single plug to the louder speaker of the two.

"The chief said perhaps now you'd deal in grease instead of soft soap."

"That's just it. Money, bribe money, instead of flattery, he meant. They want me to run the trucks through there, pay for having them left alone—oh, they'd make you the goat, all right, since that young fool of a Coles let slip it was my car. You've got to stay under cover until I fix this thing or the hullabaloo blows over." He started toward the inner office. "Come in here."

Lois got up and followed him. "Don't let this thing worry you, little girl," he said, closing the door. "It will come out all right."

"But what can I do meanwhile?" she asked.

"That's just what I brought you in here to discuss out of McManus' hearing. Can you take it, as they say in the prize ring; receive a blow without crumpling up, I mean?"

"I don't understand, I'm afraid. If you mean, can I stand disappointment—"

**E**XACTLY. I'm going to hand you an awful wallop, I'm afraid. If it wasn't I who did it and now, it would be someone else some other time. You'd get it in the long run. It might as well come from one who has only your best interests at heart—"

"Don't beat about the bush."

"I won't. Brace yourself. You can't sing. You haven't a voice."

"I—haven't—a—voice?"

"No. Will you grant that I should know? Mildred's told you that once I was— She has? Then, believe me when I say your dreams of a career as a singer, an artist, never will come true. I'll grant that you have a sweet voice, that you could go on indefinitely making a living with it once you were started, but you have no great talent, no more than hundreds of other girls—"

"Oh, I can't believe you! You have some motive—"

Surprisingly, he nodded. "Rather I have a reason. You needn't take my word for it about your voice. Pick any teacher you wish, go to him and get an audition. I'll pay the bill. He'll tell you exactly the same thing. I'm trying to save you the shock later on and—yes, I'm a bit interested personally, too. Lois, I'm not young, I never was good-looking, but I'm in love with you—"

"Oh! Are all men alike? Doesn't a one of them think of anything but—? Go on, Mr. Jermin; finish up your proposition. What do you offer? A little apartment, a maid, a car, money? All that Neil Becker gives Mrs. Gayton?"

Jermin drew himself up stiffly. "Some people might stoop to furtive love-making and call it romance. I couldn't. You couldn't, either. You're—straight. Any one can tell. That being the case, I'm not offering you a proposition, but a proposal. I'm asking you to marry me."

**"M**ARRY you?" This was a bigger blow than that other—the dashing of her dreams of a career. "You're asking me to marry you?"

"Yes." Jermin spoke gravely. "I know this has taken you off your feet. I'm not asking you to decide now. Think it over. Go and have someone else give you an honest opinion on your voice—"

"I think you're splendid," she cried; "but—I'm afraid I'm going to hurt you, Mr. Jermin."

"I didn't falter when it was my turn. I hope I can take it, too."

"It isn't that you're older, far older, than I. It isn't that you're not an Adonis. It isn't only that I don't love you, never thought of you in that light; but—"

"Love may come. I'll be good to you—"

She shook her head. "It's no use, I'm afraid," she said. "What I want to say, and find it hard to say, is that your business, this bootlegging—"

"I'll give it up—today, if you say."

"That wouldn't mend things. That affair last night, the killing of two men, the shedding of the blood of others . . . God knows how many other similar affairs . . . you, not poor, weak little Herbie Coles, are to blame. Those men were in your service. You gave the orders that sent them on the road with their liquor. Your hands are bloody, morally, if not legally. I could not forget that—ever."

"I'm in this business because others pay me to be in it. Why, even you, standing

(Continued on page 29)



# How to Build Bruno Regenatrol

## PART III: Detailed Directions for Mounting Parts and Assembling Set; How to Wire Receiver Without Making Mistakes; Suggestions for Tuning and Operating; How to Log Stations.

By JOSEPH CALCATERRA

THE first step in mounting the parts is to fasten the subpanel to the subpanel supports of the adjustable brackets. Then mount the adjustable portions of the brackets on the subpanel support members and place this assembly into the sloping front cabinet. It is then an easy matter to adjust the angle of the bracket to the angle of the cabinet slope by placing the adjustable panel support edges of the brackets against the slope front of the cabinet until both top and bottom ends of the bracket are flush with the panel guide of the cabinet. You can then tighten the two portions of the bracket and check up again to see that the tightening operation did not move the adjustment.

The relative locations of the parts on panel and subpanel are shown very clearly in the top and bottom views, figures 3 and 4, given in the last issue of the magazine, and in figure 5 of the present article.

In the pictorial wiring diagram, figure 5, the relative locations of the parts as they appear in plan on the panel and subpanel are shown. In some cases they have been separated slightly to avoid confusion in following the wiring. The indicating numbers given the parts in this layout correspond to the numbers given the symbols of the parts in the schematic wiring diagram, figure 1.

### How to Place Receiver

The layout shown in the pictorial diagram is that shown in figure 4, but with the panel tilted back so as to show the instruments and terminals more clearly. In wiring the receiver you will find it easiest to place the receiver on your table in the position shown in figure 4 and follow the connections as shown in figure 5.

In the following article, to facilitate giving directions, the "top" of the front panel will refer to the actual top of the subpanel as it appears when placed in the cabinet, while the "bottom" will be the bottom of the panel as it appears in the cabinet. This of course is just the reverse to the way in which it appears in figures 4 and 5, so please keep this in mind and avoid confusion.

Similarly the "front" of the subpanel will refer to the edge of the subpanel nearest the front panel and the "rear" of the subpanel will refer to the edge nearest the back of the cabinet.

The "top" of the subpanel will be the side shown in figure 3 and the "bottom" of the subpanel will be the side shown in figures 4 and 5. The "right" and "left" side of the panel and subpanel will be the right and left respectively as they are shown in figures 4 and 5.

Now mount coils "T2" and "T3" on the condenser unit as shown in figure 5. In this position coil "T3" will be at the left side of the condenser unit with the tickler coil towards the bottom of the panel while coil "T2" will be at the right hand side with the primary coil towards the top of the panel as shown in figure 5. Coil "T2" should be mounted with the brackets so as to set back from the front panel to allow clearance for the Radiohm.

Next mount the Radiohm on the panel. Mount the light switch. Then mount the condenser and coil unit, fastening the unit and front plate on the panel with the screws provided. The shaft member of coil "T3" will project through the hole provided in the panel. Now mount the knobs on the shafts of the Radiohm and tickler coil and the front panel is all ready for mounting to the brackets and for wiring.

### Subpanel Assembly

Now proceed to mount the parts on the subpanel. First mount the radio frequency choke coil "RFC." Bend the mounting lugs of bypass condensers "C6," "C2" and "C7" to permit mounting them on end and mount them in the positions shown in figures 4 and 5.

Now mount in order, with their terminals in the positions shown, the Carter battery switch "S2"; rheostat "R1"; Amperites "A3," "A4," "A2," "A5" and "A1"; transformer "T1"; and the "Ant" and "Gnd" posts.

Then mount tip jacks for the voltmeter as shown on either side of socket "V2." Now mount sockets "V1"; "V2"; "V3"; "V4" and "V5" with their terminals in the positions shown in figure 5. Be sure the

location of the terminals is correct or your wiring will be wrong.

Now mount the Multiplug with the locating pin towards the left as shown in figure 5 so that the color terminals will be placed in the positions shown.

Next mount the two audio transformers "T4" and "T5" with the "G" and "P" terminals towards the rear of the subpanel as shown in figure 5 and the loud speaker jack "J" with its + terminal towards the rear of the subpanel.

### Wiring Directions

The next step is to mount the front panel on the panel bracket and proceed with the wiring. Best results in soldering with Kester Radio Solder will be obtained by following the manufacturer's instructions.

terminal which is connected by the leads going from the Amperite terminals.

Now connect together the "F" and "P" terminals of transformer "T1" and connect them in turn with the "Ant" binding post. Connect condenser "C1" (.0005 mfd.) between the + terminal of transformer "T1" and the "Gnd" binding post. Connect the "F" terminal of transformer "T5" with the "Brown" terminal of the Multiplug. Connect the "F" terminal of transformer "T4" with the "Black" terminal of the multiplug.

Run a connection from the "P" terminal of transformer "T4" to one of the terminals of "RFC" choke as shown.

Now wire together, the yellow terminal of the Multiplug; the "B" terminal of transformer "T4"; one terminal of con-

wire of the Multiplug should be connected with the 90-volt terminal of the B battery.

When a CX-112 type of tube is used you may employ as high as 150 volts on the last stage, but care should be taken to make sure that the loud speaker windings will stand the heavy current flow.

If you wish to use power tubes of the CX-371 or CX-310 type you will have to make provision for an output transformer or choke in the last stage so as to prevent excessive current through the loud speaker windings.

Either dry cell or storage battery tubes may be employed, but the storage battery tubes naturally will give better results. A CX-300A tube is recommended as the detector with the grid return connected with the negative A battery lead as shown. Where a CX-301A type of tube is used for the detector, slightly better results will be obtained by connecting the grid return of the detector stage with the positive A battery lead.

The Black wire of the Multiplug should be connected with the 4½-volt terminal of the C battery. The C battery required for the last stage will depend on the type of tube used in the last stage and should be in accordance with the specifications of the manufacturer for various B battery voltages.

### Tuning Instructions

Tuning of the set is a very simple matter. The wavelength settings are controlled by the drum controls of the variable condensers. Oscillation and regeneration control for efficiency and volume control is obtained by means of the Radiohm and tickler coil knobs.

The two drums can be turned by a pressure of the finger on both drums. Any slight compensation may be obtained by shifting the finger to one or the other of the drum controls.

In placing the set in the cabinet, two strips of wood three quarters of an inch thick should be placed under the bracket feet. This is necessary to allow sufficient space under the subpanel to mount the bypass condensers on end.

The Jewell portable voltmeter may be placed on top of the cabinet as shown in figure 2. The low voltage scale leads can be inserted into the tip jacks shown on either side of socket "V2" and the readings for this tube will give a good indication as to the best operating point for the radio frequency and detector tubes controlled by rheostat "R1" on the subpanel.

This rheostat should be set full on when first tuning the set but can then be adjusted as low as possible consistent with good results and left

at that setting for the rest of the evening. Adjustment of this rheostat will keep the tubes operating at the point indicated by the voltmeter.

A regular 6-volt lamp should be obtained for the light switch.

Carefully "log" the settings for various stations and record their settings, together with their respective wave lengths or frequencies in kilocycles. Once a dozen or so stations have been logged, you will be able to interpolate the dial settings for any desired station.

## FIX SET FOR RESULTS

(Continued from page 7)

They do not require recharging, and with the exception of one special make, so far as the writer can learn, they cannot be recharged.

B batteries should, with normal use, last from six months to a year. There are a great many instances where they have been used for periods much in excess of the time mentioned, yet the average life will be between six months and a year.

### Testing B Battery Voltage

Unlike an A battery, the method for determining when a B battery has served its useful life is found by testing its voltage. To accomplish this test a "high resistance voltmeter" should be used. Care should be exercised in the purchase of such an instrument, as the cheaper grades are considered practically worthless. They are not only quite likely to be inaccurate, but in altogether too many cases are injurious to and drain the battery because of their low resistance.

(Continued on page 30)

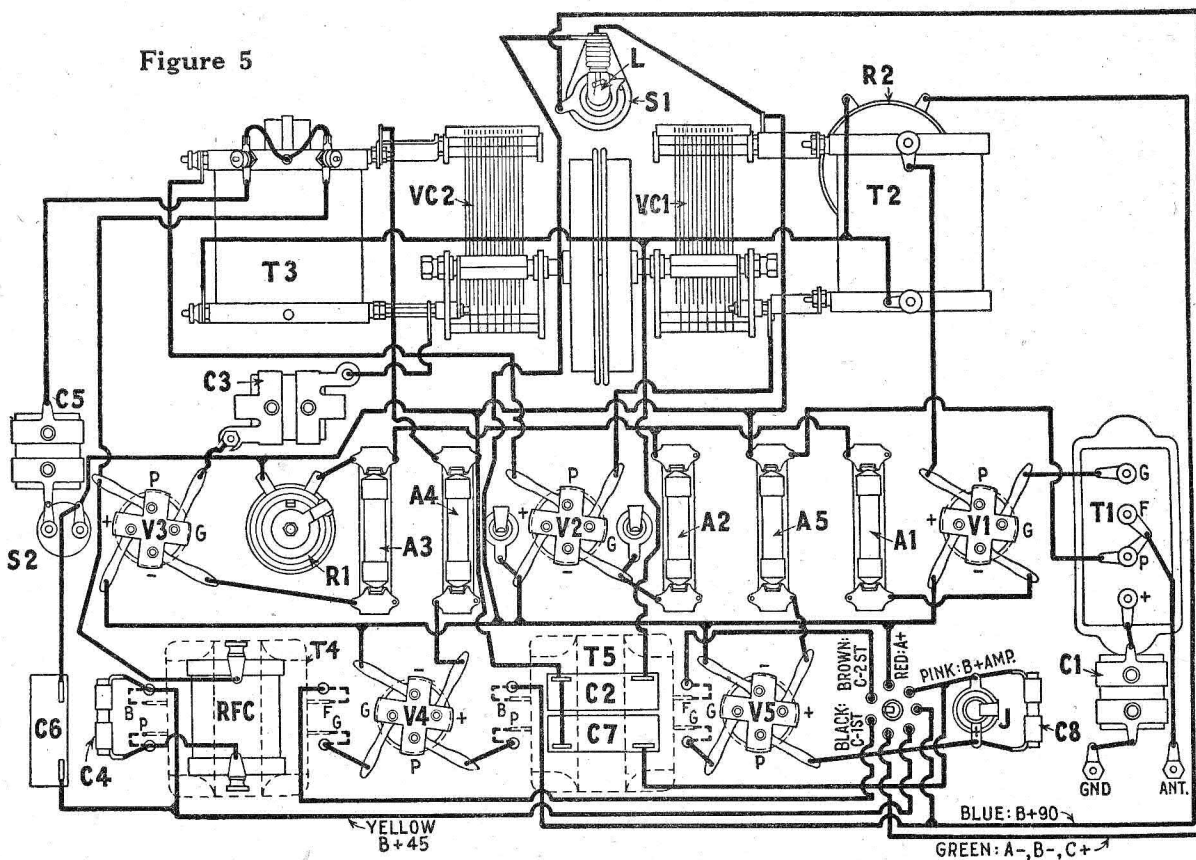


Figure 5

denser "C6" and one terminal of condenser "C4" (.0005 mfd.) as shown. Now wire the connection shown between one of the lamp switch (L) terminals and the "A" battery lead from the "Red" terminal of the Multiplug.

Now wire the connection shown between one of the light switch terminals and the "Green" terminal of the Multiplug.

Next run a wire connecting the "Pink" terminal of the Multiplug; one terminal of jack "J"; one terminal of condenser "C8" (.006 mfd.) and one terminal of condenser "C7."

Run a connection from the other terminal of condenser "C8" to the other terminal of jack "J" as shown.

Now connect together one terminal of Radiohm "R2"; the "Pink" terminal of the Multiplug; and the "B" terminal of transformer "T5." Now run a wire connecting the other terminal of Radiohm "R2"; one of the terminals of "T2"; one of the terminals of "C2" and one of the terminals of "T3" as shown in figure 5.

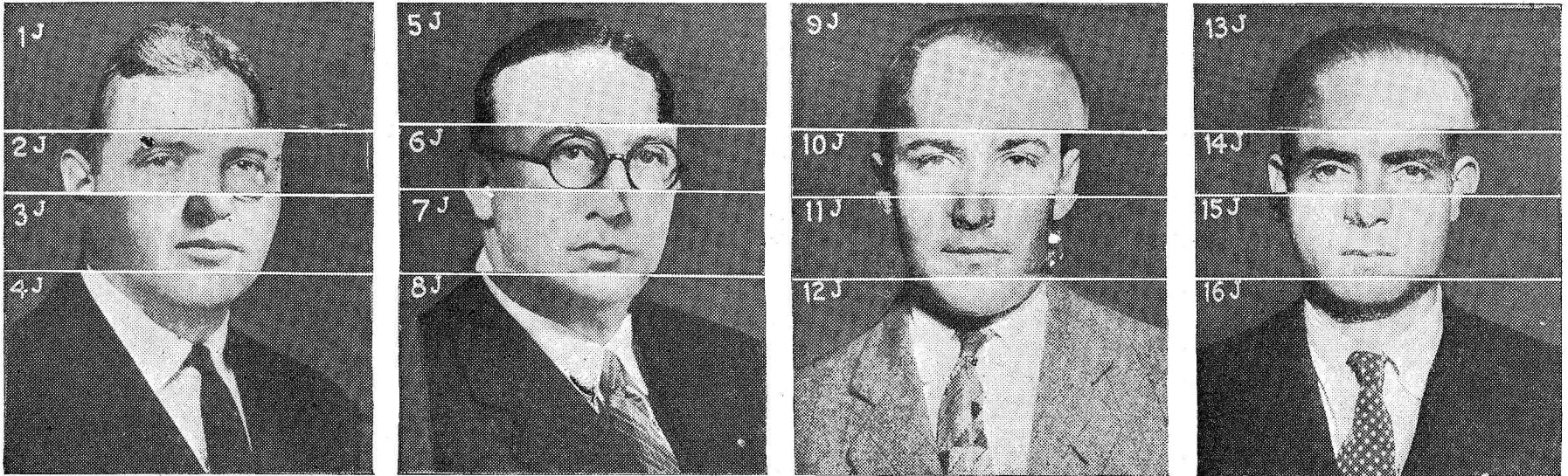
This should complete the wiring of your receiver and all the connecting lines shown in figure 5 should now be filled in, providing you have followed instructions and marked over the lines as you made the connections.

### Battery Connections

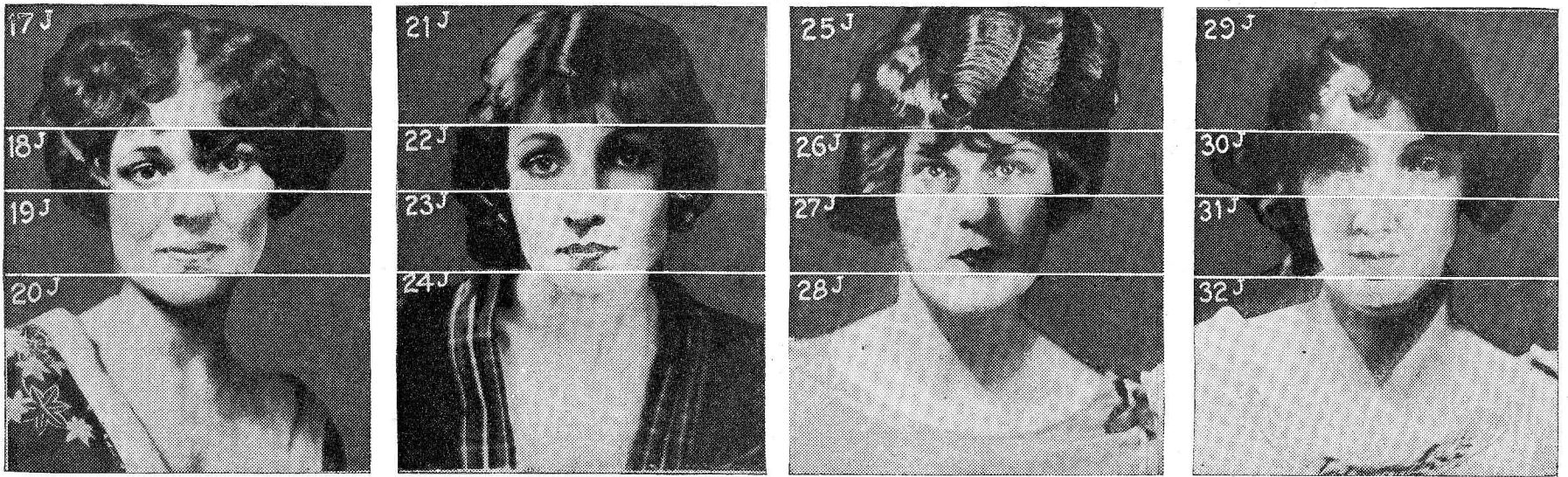
Little explanation of the battery connections is necessary since the proper connections of the color code wires of the Multiplug are given in the wiring diagrams, figures 1 and 5.

The voltages used for the B batteries are indicated with the exception of the last stage. When a regular 301A type of tube is used in the last stage, the Pink

# \$26,000.00 IN PRIZES FOR SOLVING "WHOZITS"



The following artists are in the above panel: Bernard Regan, WOC; Frank W. Elliott, WOC; Leon Schiro, KPRC; Max E. Shippee, KPRC.



The following artists are in above panel: Jane Winton, KFVB; Peggy Mathews, KFVB; Emma Worth Johnson, KVOO; Dorothy Heywood Reedy, KVOO.



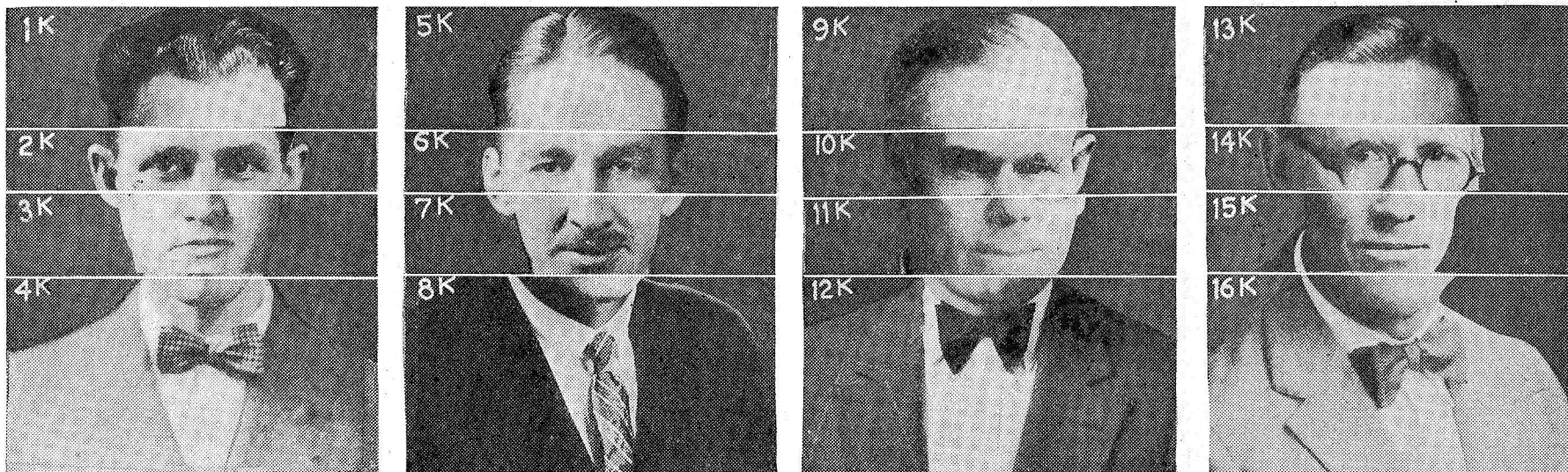
The following artists are in above panel: Billy Day, WMCA; John Hopkins, III., WJAX; Walter Keeley, KOA; Walton McKinney, KJR.



The following artists are in above panel: Peggy Worth, WMCA; Mrs. Eddie Squires, WJAX; Eva Barclay, KJR; Mrs. Clara Hoover, KOA.



# BEGIN THE NEW YEAR RIGHT BY PLAYING WHOZIT



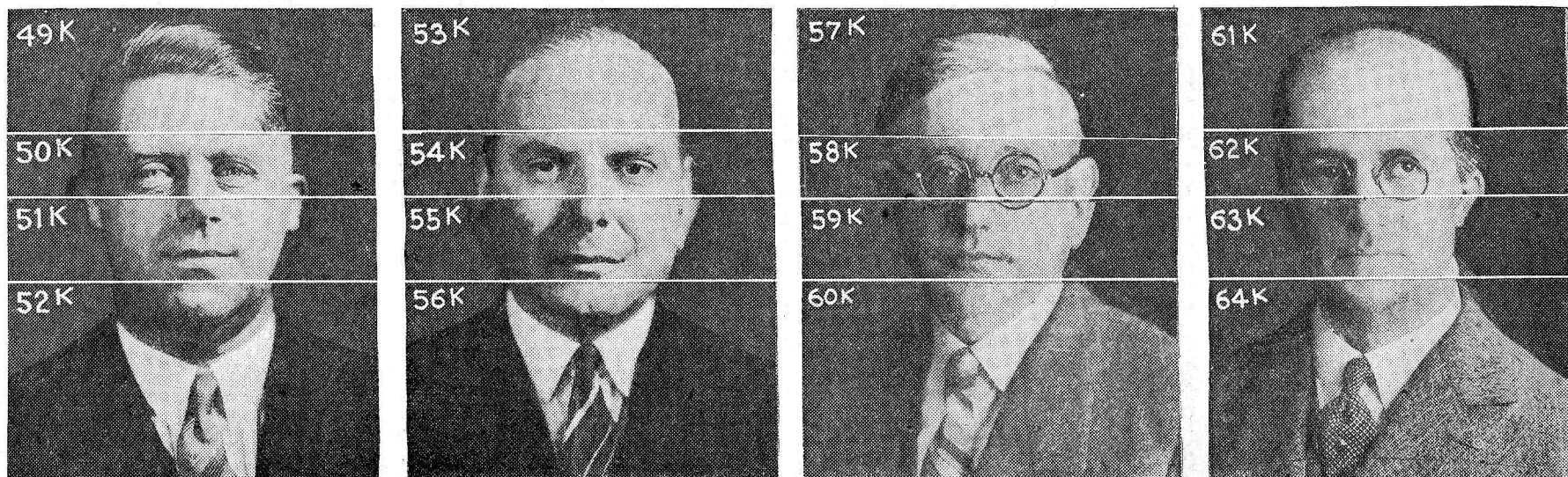
The following artists are in above panel: Don Hunt, KMOX; Albert Newquist, WOW; John Dowd, WSM; John D. Norton, WHT.



The following artists are in above panel: Wilma Melotz, WOW; Mrs. Daisy Hoffman, WSM; Jean Sargent, WHT; Helen Moore, KMOX.

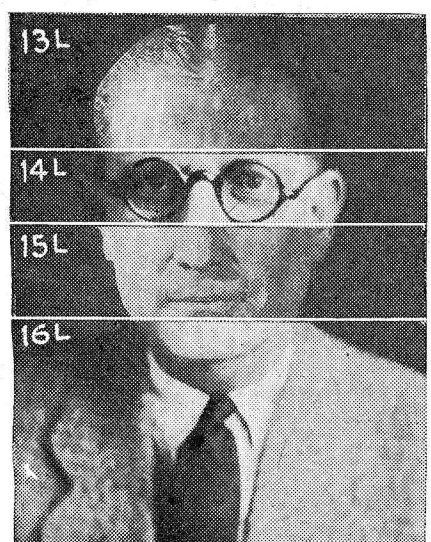


The following artists are in above panel: Leo Fitzpatrick, WJR; Eddie Peterson, WJR; Henry Haines, KTHS; F. Leslie Body, KTHS.

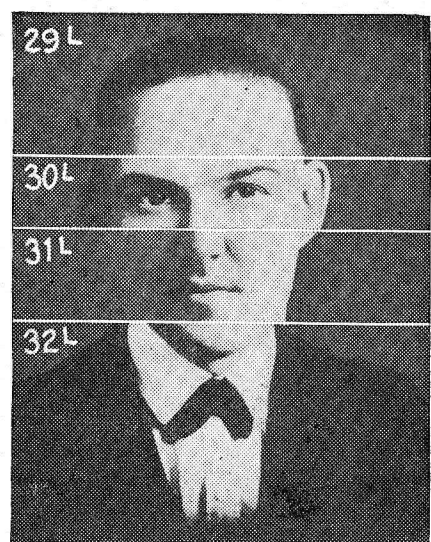
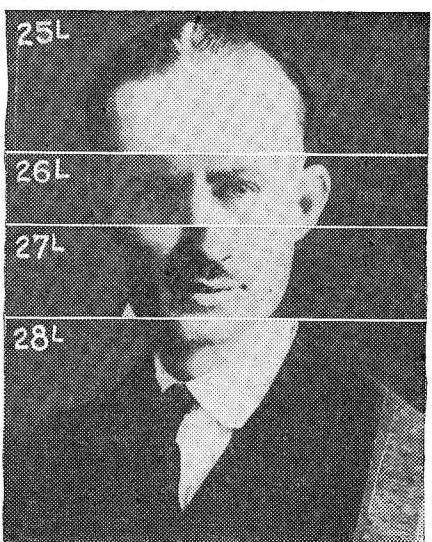
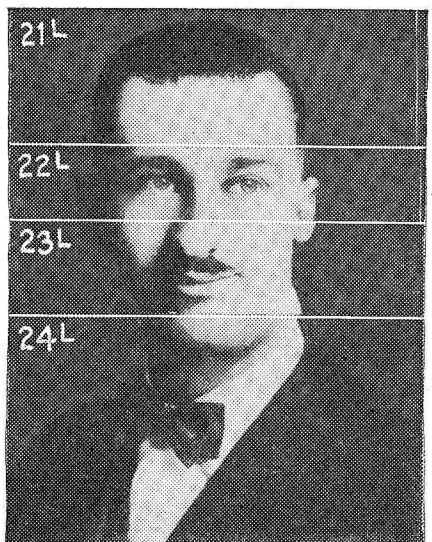
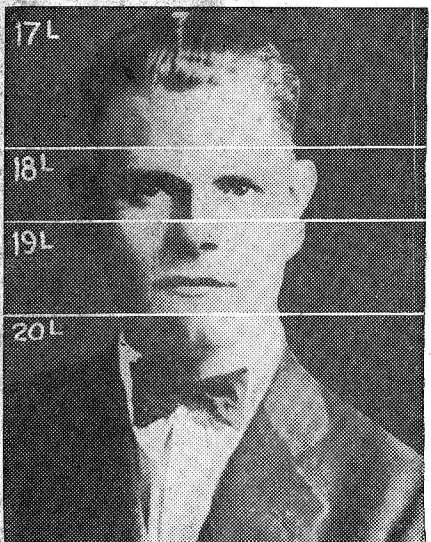


The following artists are in above panel: Lewis A. Vantine, WSOE; Michael Swedish, WSOE; Dr. Bertram Fenimore, WPG; Howard Clemons, WPG.

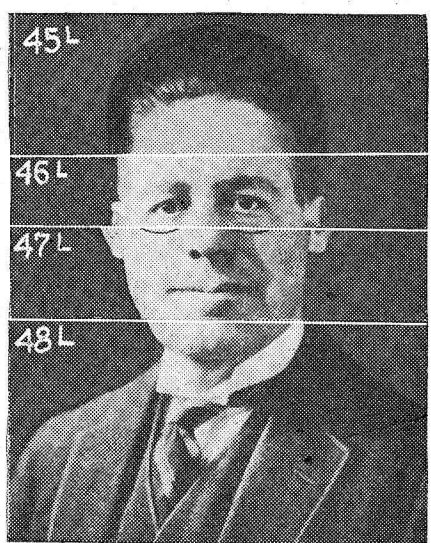
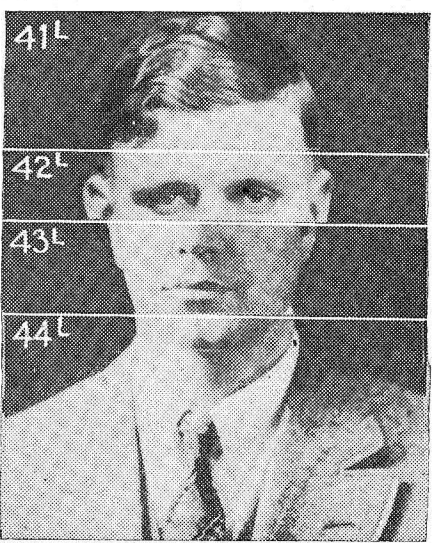
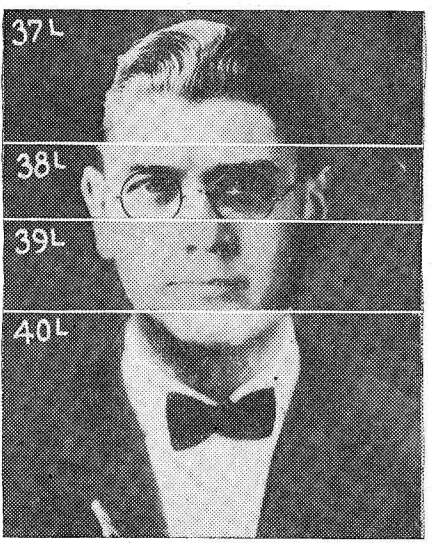
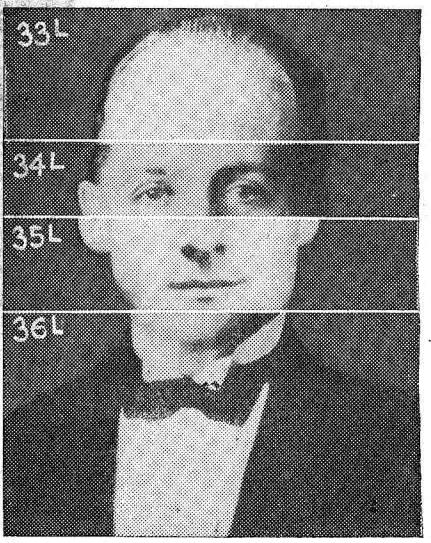
# FIND POPULAR ARTISTS IN THE PICTURES BELOW



The following artists are in above panel: Sam Lazerov, WMC; Emmett Harris, WMC; Paul Estabrook, WOOD; Fred Gleason, WOOD.



The following artists are in above panel: Carol Burdick, WLW; Cyril Buschle, WLW; A. L. ("Al") Stone, WHB; Art Spratt, WHB.



The following artists are in above panel: Elmer S. Dayer, WMAK; J. Gowler, CKY; Walter Smith, WNAC; "Bill" Dodge, WNAC.



The following artists are in above panel: Ruth Reed, WHK; Arlien Betty Colon, WHK; Betty Thomas, WMAK; Edythe Leckie, CKY.

# Radio Digest Illustrated

Reg. U. S. Pat. Off. & Dom. of Canada

Published by the

**RADIO DIGEST PUBLISHING CO.,**

(Incorporated)

510 North Dearborn Street  
Chicago, Illinois

Telephones: Superior 7323, 7324, 7325, 7326, 7327

E. C. RAYNER, Publisher

Eastern Office, Park-Lexington Building, 247 Park Ave.,  
New York. Telephones: Ashland, 8144, 8145, 8146

Member of the Audit Bureau of Circulations



PUBLISHED SEMI-MONTHLY

SUBSCRIPTION RATES

Yearly in U. S. and Possessions and Canada, \$3.00  
Foreign Postage, \$1.00 additional. Single copies, 15 cents.

Vol. XIX

January 1, 1927

No. 6

## Our Forecast and Review

JANUARY first always brings to our mind the taking of inventory of our past year's work and looking ahead at what the New Year promises. As far as Radio is concerned, despite the numerous complaints of chaos and the lack of Radio control legislation, the year of 1926 has brought about many striking developments, both on the technical side and the program presentation division of broadcasting.

Crystal-controlled broadcasting transmitters are now the style, and engineers claim that such transmitters can never vary from their exact wave length. That is good. This development alone has made the broadcasting year worth while, if for no other reason.

Superpower transmitters, remotely controlled at proper distances from populated centers, have forged ahead. No longer is it necessary to strain one's ears and sacrifice quality in order to bring in a distant program one especially wishes to hear. Today, on January first, we have at least three transmitters with powers of 50,000 watts, and nearly half a dozen more in prospect. Five thousand watt stations have multiplied greatly and are radiating programs of such quality we never were able to hear in 1925. The trend has been toward increased power among the stations better equipped to serve the millions of listeners.

Enough for the technical developments of broadcasting. In the program division we may "point with pride" to scores of unusual accomplishments, each better than the one preceding. Chains have increased in size and are serving larger areas. Their programs have pleased many listeners previously out of range of the closest chain member. Chain programs have improved, thanks to the goodwill broadcast advertising appropriations made by representative business houses whose aim is to please the six million set owners of this country.

A practical demonstration of how well Radio programs can be arranged and presented was heard countrywide on November 15 when the National Broadcasting company dedicated its purposes to serve the greatest number of listeners in the best possible fashion. This scintillating program was probably unsurpassed by any other broadcast, unless it might be that of the Radio Industries banquet, handled earlier in the fall by nearly two score stations simultaneously.

Broadcasters not belonging to either the new "Red" or "Blue" chains of the National Broadcasting company have likewise made great strides in program building and ability of artists microphoned. We will not stop to discuss the many notable improvements nor mention names of stations. There are far too many cases.

We forecast that the Radio legislation problem will be settled before the present short session of Congress adjourns. We know, too, that many broadcasters now on the air are planning to increase their transmitting powers to the 50,000-watt class.

We believe in the future of Radio. It is still in its infancy despite the many notable achievements here discussed. Ere we know, the projection of Radio motion pictures from a central broadcasting organization will become an established fact. This, we predict, will occur perhaps in 1927, perhaps 1928, but certainly no later.

Yes, 1926 has made Radio history, and 1927 will make more.

## New Idea in Political Radio

SOME wag, we will call him wag, has presented the idea that the proper fashion for the Republican, Democratic or other political parties to get adherents to their platforms via the Radio route, is for them to sponsor high-class musical presentations from the better broadcasting stations.

That is an idea. Perhaps even the platform could be woven into a program by the proper choice and arrangement of various musical compositions. Certainly, we will agree that such a political broadcast would hold far greater interest for the average American citizen than the cut-and-dried oratorical offerings we more often tune out around election time. Boy, page the national committeemen.

## RADIO INDI-GEST

### Music

*There's music in a purling stream  
And rippling songs in rain;  
There are ballads in a sunbeam  
Echoed in a flower's refrain.*

*The singing birds in roulades  
Send forth their songs from trees;  
The heavenly orb rejoices  
With constant jubilees.*

*The greatest music in the world  
Is when a mother sings;  
The while she rocks her babe to sleep  
As to her breast he clings.*

RHEA SHELDON.

### A Broadcast for Troy, N. Y.

Dear Indi: As a "consolation" to the late or very nearly late members of its congregation, WCB, the Zion tabernacle, on a recent December Sunday, broadcast "Blessed Be the Tie That Binds." Indeed, how appropriate. I know, for many's the time I've cursed at my Arrow when I had a heavy date and the old cravat refused to budge. JUST KOSATKA.

### English Radio English

Dear Indi: Asked why he refused to broadcast from the London station, a famous artist said because the fee offered was 2LO. I asked the B. B. C. how much they offered him, but they said that was a B. B. C.-ret! LONDON BOBBY

### The End of a Perfect(ly) Rotten Day

*When you are late to dinner and you feel all in,  
And you've lost your key and can't get in,  
And you have to wait and push the bell,  
And the wife lets you in and raises—well,  
Because you brought beans when she said rice  
And the iceman forgot to leave the ice,  
And you learn that your dog killed the neighbors' cat  
And the baby tore up your Sunday hat  
And you sit down to eat and the dinner's cold,  
And your wife looks tired and you feel old  
And she wants to go to see a show,  
And you don't and you say no.  
Then she gets mad and goes to bed,  
And you turn on the Radio and the battery's dead,  
And you phone for new ones and they send them out,  
And you hook them up with wires stout,  
And you mix connections like a country rube,  
Pull the switch and burn out every tube  
And this, of course, calls for a drink of Rye,  
But you go to the cupboard and the bottle's dry.  
Then you pull the hair from your old bald head,  
And you get awful mad and go to bed.  
Listen to me—I want to say—  
It's just the end of a Rotten Day.*

OLD KING TUTT.  
Hiz-zelf.

### Alaska Papers, Please Copy

Camp 50, DeQuincy, La.  
December 25, 1926.

Dear Indi: Radio in this part of Louisiana is at the present time a "howling" success—more howling than anything else. It is unusually warm here this winter, which, coupled with the fact as told me that Radio reception in this section is very poor most of the time, makes the game a great gamble.

It has reached my ears that east of the Mississippi river, the skeeters are so large that small live stock has to be kept in pens roofed over with chicken wire fencing in order to prevent the mosquitos from either carrying off the animals to be drained of their blood at some other place and time, or stabbed to death in the pens by the vicious bill of the skeeter, which resembles the sword of the Atlantic ocean sword fish.

Yours for veracity, cooler weather and better Radio in 1927. GEORGE.

Now, George, don't exaggerate. I know, restrained as you are from telling DX tales because there is no material, that it is a great temptation to press agent the advantages of the natural history of one's location, but please be careful. That is a heck of a way to end up the old year.

### Radio Pickups

*A boy stood on the rolling deck  
Of a freighter out at sea,  
And he warbled a tune,  
To the silver moon,  
In the transmitter of XYZ.*

*A wireless wave picked up the song,  
And carried it back the line,  
Where his sweetheart, Nett,  
Sat in at the set  
With her brother, Considine.*

*"Who is this guy with sweet lines?"  
Her brother asked in scorn,  
"He's the mushiest bird,  
That I ever heard,  
From the day that I was born."*

*"He's no such thing, you darn old grouch,"  
Said Nett with much dismay,  
"And he carries a punch,  
Like a six dollar lynch,  
That would put you in dreamland, any old day."*

ARTHUR C. STOWELL.

Resolved, as we begin 1927, that we will hereafter charge our batteries and look into the so-called battery eliminator before taking our latest set apart; that we will refuse to listen to any male or female artist raved about by "Marcella"; that we will write to our Senator and Representative in Congress requesting proper Radio legislation, and that we will be darn fool enough to believe that Congress will pass a law satisfying everybody. INDI.

## Happy New Year



## Condensed

BY DIELECTRIC

Station WBAP, Fort Worth, Texas, knows a good organ when the director hears one and has the added advantage of a very capable organist to play it. Merely to play a selection with grand organ, seldom varying the stops, is unlikely to hold the attention of any listener for very long, yet this is the practice of a number of organists heard by Radio. Our Texas organ, to begin with, evidently is a product of one of the foremost organ builders—shown in its quality and variety of pipes. The artist playing it has an acute sense of orchestration and never at a loss to choose the stop best fitted to convey the proper value of a phrase or motif. It is a genuine pleasure to hear this combination.

Are there a dozen stations covering the wave length of Station WAPI, Auburn, Alabama, so that you seldom can get them? I find it true, too. Yet there came a belated section from a program broadcast by this Alabama Polytechnic Institute station of a character tempting an alteration in the name: Terpsichorean instead of Polytechnic. Not that its exposition of the art would merit a place above any of the Night Club classes in modern dancing, but most of the works in Jazzology were on their Radio curriculum. A word about the announcing. A single breath suffices for any length announcement without punctuation inflection pause between station call and name of selection and that is all.

One of the most uniformly pleasing broadcasts to listen for are from the studio of WCB, Zion, Ill. By that I refer to their entertaining features, naturally, not to the peculiarities in their religious views. The musical offerings are selected from a wide variety of interesting nature and presented by instrumentalists and vocalists.

Now don't misunderstand me when I say there are certain things about "L. P." director of Station WOW, out in Omaha, which are admirable and deserve our praise. I'm not looking for one of his famous form letters and may even find it expedient to comment adversely on some of the numbers fostered by him. Just now I am inclined to compliment Mr. Palmer for the quality of announcing, which is clear and concise, giving station call AND city between each number. There is no unnecessary delay in the progress of his programs and certainly nothing faintly approaching verbosity in the announcements—announcers please note. In addition to handing him that, I wish to pay my respects to that charming team of singers; Jean Gordon and Harry Wilson, in popular ballads.

There is a keen desire on my part to learn the flavors and amount of candy given the director at Station WSUI, university of Iowa station, at Iowa City, as a prize for his singing of the Prisoner's song. Maybe he didn't receive candy at all—that's possible! But this is what I started out to say (and I hope other broadcast directors guilty of the same offense will get riled too) about the director of that station. He shifted the onus for choice of selections to egotistic listeners glad to pay the cost of a telegram in return for hearing their own rhetorical efforts broadcast. When will this outworn custom be universally discarded with the concurrence of an augmented audience?

"King Dodo" was given with an acceptable cast from Station WCCO, Minneapolis-St. Paul, the soloists being singers of fair attainment with a tenor and soprano possessing really good voices. The work of the chorus did much to hold the attention of many listeners, as the content could hardly be expected to do.

AN EVENING AT HOME WITH THE LISTENER IN CENTRAL TIME

Table listing radio stations by location, call letters, and broadcast times for Saturday through Friday. Includes stations like CFCF, CFCN, CFCJ, etc., with their respective frequencies and schedules.

STATIONS IN ORDER OF WAVE LENGTHS

Table listing radio stations in order of wave lengths, with columns for Meters, Call, and station name. Includes stations like WOK, WMAK, KTAB, etc.

Complete Rules for "Whozit"

1. Radio Digest will sponsor a national game to be called the game of Whozit, which will be participated in by the following Radio broadcasting stations: WHT, Chicago; WMAK, New York; WNAC, Boston; KJR, Seattle; WMAK, Buffalo; WHK, Cleveland; WPG, Atlantic City; WLW, Cincinnati; WJR, Detroit; WOOD, Grand Rapids, Mich.; WSOE, Milwaukee; CKY, Winnipeg; WMC, Memphis; WSM, Nashville; KTHS, Hot Springs, Ark.; KMOX, St. Louis, Mo.; WOC, Davenport; WHB, Kansas City; WOW (formerly WOAW), Omaha; KOA, Denver; KFNB, Los Angeles; KPRC, Houston, Tex.; KVOO, Bristow, Okla.; WJAX, Jacksonville, Fla.

Advertisement for the Cuno Reel, featuring an illustration of a gramophone and a reel. Text includes 'RADIO CUNO REEL Anywhere - Any Time!', 'Out on the porch; in the dining room, bedroom, kitchen or laundry. With its 25 ft. cord, you can put your loud speaker—or an extra one—where you want it. Self rewinding, controlled by ratchet button. Handsomely finished; fully guaranteed. Easy to attach; easy to buy. If your dealer doesn't carry, order direct. \$3.50 Price complete, post paid, \$3.50'. The Cuno Engineering Corporation, 90 South Vine St. Meriden, Conn.







KSD, WIAR, WTAG, WCAE, WTAM, WOC, WFL, Atwater Kent radio hour. Madame Louise Homer, contralto Louise Homer Stires, soprano "Ouis Est Homo" from Stabat Mater... Rossini Louise Homer, Louise Homer Stires, orchestra. a. Father in Heaven, Haendel b. In the Time of the Roses... Reinhart Louise Homer c. My Heart Ever Faithful... Bach Louise Homer and orchestra a. Would God I Were a Tender Apple Blossom... b. Old Londonderry Air... c. Dearest... Sidney Homer c. Swiss Echo Song... C. Eckert d. Abide With Me... Traditional Louise Homer Stires a. What Is Love... b. The... c. Luther's Cradle Song... d. Come Down to Kew... e. Whispers Hope... f. Last Night the Nightingale Woke Me... g. Banjo Song... Ruth Emerson, accompanist.



9:30 KMA (461.3m-650kc) Rev. J. W. Todd and family. WFAA (475.9m-630kc) J. H. Bohannon, tenor. WGBS (315.6m-950kc) Old time minstrels. 9:35 WLW (422.3m-710kc) "Getting Acquainted with Beethoven." 9:50 WLW (422.3m-710kc) string orchestra. 10 WLW (422.3m-710kc) Little symphony orchestra. 10:15 WCCO (416.4m-720kc) Chippewa Indians. 10:30 KPRC (296.9m-1010kc) Canadian Red Jackets. WBAP (475.9m-630kc) Dick Lucke and his Texas hotel orchestra. WRR (245.8m-1220kc) R. E. Shepperd, tenor. 12 KOIL (305.9m-980kc) Ray-O-Vac twins.

SUNDAY, JANUARY 9 Church Services

Table with columns: Eastern, Central, Mountain, Pacific. Lists church services with times and station names like WHAS, KTHS, WRR, KNK, WSB, KUOA, WFAA, KPRC, WRR, KNX.

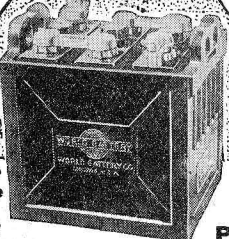
SUNDAY, JANUARY 9 Headliners

Table with columns: Eastern, Central, Mountain, Pacific. Lists headliner programs with times and station names like WSB, WHAS, KNX, KOIL, WFAA, WGBS, KTHS, WSB, WRR, KNX.

Regular Sunday Features

Eastern Time Stations CFCA Toronto, Can. (356.9m-840kc) 11 a. m. services: 7 p. m., St. Paul's Anglican church; 8:45, musical program. CKAC Montreal, Que., Can. (410.7m-730kc) Capitol theater symphony.

DESIGNED to OUTLAST World Storage A Battery



Two-Year Guarantee Bond in Writing

NEW LOW PRICES

Famous the world over for reliable, enduring performance. Solid Rubber Case lasting protection against acid or leakage.

Approved and Listed as Standard by Leading Authorities

Including Radio News Laboratories, Popular Sci. Inst. Standards, Pop. Radio Laboratories, Radio Broadcast Laboratories, Radio in the Home and Lefax, Inc.

Send No Money

Just state number wanted and we will ship same day order is received, by express C.O.D. Pay expressman after examining batteries. 5% discount for cash with order. Remember, you save 50% on World Batteries—so send your order today.

WORLD BATTERY COMPANY Dept. 48 1219 S. Wabash Ave., Chicago, Ill.

KDKA WSBK WEAF KYW

SPORTS

Saturday, January 1

5 p. m. KPSN (315.6m-950kc) Stanford-Alabama, football game; also broadcast by KFI, KNX, KOA, KPO. 9:30 WIP (508.2m-590kc) U. of Penn.-Yale, basketball.

Friday, January 7

8:30 p. m. KUOA (299.8m-1000kc) Rice Institute-U. of Ark., basketball.

Saturday, January 8

8:30 p. m. KUOA (299.8m-1000kc) Rice Institute-U. of Ark., basketball. WTAW (270.1m-1110kc) S. M. U.-A. and M., basketball.

KDKA Pittsburgh, Pa. (309.1m-970kc) 6:30 p. m. KDKA Little symphony orchestra; 7:45, service. PWX Havana, Cuba (399.8m-750kc) 8:30-11:30 p. m. Cuban songs and music. WBAL Baltimore, Md. (245.8m-1220kc) 6:30-7:30 p. m. orchestra; 8, program.

WBBR New York, N. Y. (416.4m-720kc) 10 a. m. music, choral singers; 2 p. m., Watchtower string quartet, vocal, Bible lecture; 8, Watchtower violin choir, vocal selections.

WBZ Springfield, Mass. (333.1m-900kc) 10 a. m. services; 6:30 p. m. organ; 7, quartet; 7:30, program; 8, musical; 9, program.

WCAE Pittsburgh, Pa. (461.3m-650kc) 6:30 p. m. orchestra; 7:15, WEAF; 9:15, WEAF; 10:15, play.

WCAU Philadelphia, Pa. (277.6m-1080kc) 11 a. m. services, First Unitarian church; 5, recital; 5:15, Undenominational church services; 5:25, sermon, Rev. John W. Stockwell; 6:45, orchestra; 7:45, Cathay Garden orchestra; 8:30, Donwit Teller Ensemble; 10, Al Zensay's orchestra.

WCX Detroit, Mich. (516.9m-580kc) 7:15 p. m. Central Methodist Episcopal church.

WBDO Winter Park, Fla. (239.9m-1250kc) 11 a. m. church; 7:30, service; 9, musicale.

WEAF New York, N. Y. (491.5m-610kc) 6 p. m. program; 7:20, musical program from the Capitol theater, WEEL, KSD, WRC, WWJ, WJAR, WCAE, WTAG; 9:15, Atwater-Kent Radio hour, WEEL, WGR, WRC, WWJ, WSAI, WGN, WCCO, KSD, WJAR, WTAG, WCAE, WTAM, WOC, WFI; 10:15, talk.

WEI Boston, Mass. (348.6m-860kc) 10:50 a. m. Old South church; 2 p. m., program; 4, WEAF; 7:20, WEAF; 9:15, WEAF; 10:15, B. F. Keith's theater.

WCBS New York, N. Y. (315.6m-950kc) 9:30 p. m. Old Time minstrel; 10:30 symphony.

WGR Buffalo, N. Y. (319m-940kc) 10:45 a. m. service; 7:45, Central Presbyterian church; 9:15-10:15, WEAF.

WGY Schenectady, N. Y. (379.5m-790kc) 11 a. m. service; 3 p. m. musicale; 5, organ; 9, WJZ.

WHK Cleveland, Ohio (272.6m-1100kc) 10 a. m. Bible association; 5 p. m. twilight musicale; 6, dinner program; 7:30, lecture; 8:45, program.

WHN New York, N. Y. (361.2m-830kc) 6:30 p. m. Libby's Hotel orchestra; 11, orchestra; 12, The Playground.

WICC Bridgeport, Conn. (285.5m-1050kc) 10:50 a. m. service; 2 p. m. Sunday afternoon concert.

WIP Philadelphia, Pa. (508.2m-580kc) 7:15 p. m. evening service; 10, symphony.

WJAX Jacksonville, Fla. (336.9m-890kc) 11 a. m. service; 8-9, services.

WJR Detroit, Mich. (516.9m-580kc) 10 a. m. First Baptist church; 10 p. m. special song service, First Baptist church.

WJZ New York, N. Y. (454.3m-660kc) 11 a. m. and 7 p. m. Park Avenue Baptist Church Carillon; 7:20, Hotel Ambassador trio; 8, musicale, WBZ; 9, Hotel Commodore concert orchestra, WBZ, WGY; Godfrey Ludlow, violinist.

WKRC Cincinnati, Ohio (325.9m-920kc) 6:45 p. m. Walnut Hills Christian church; 10, classical program; 11:15, Louisville Loons; 12, Marie Turner; 12:15, Louisville Loons.

WLW Cincinnati, Ohio (422.3m-710kc) 11 a. m. Seventh Presbyterian church; 3 p. m. organ; 7:30, Seventh Presbyterian church; 8:30, Beethoven program; 8:50, Crosley concert orchestra.

WLWL New York, N. Y. (288.3m-1040kc) 8:15 p. m. Paulist choristers.

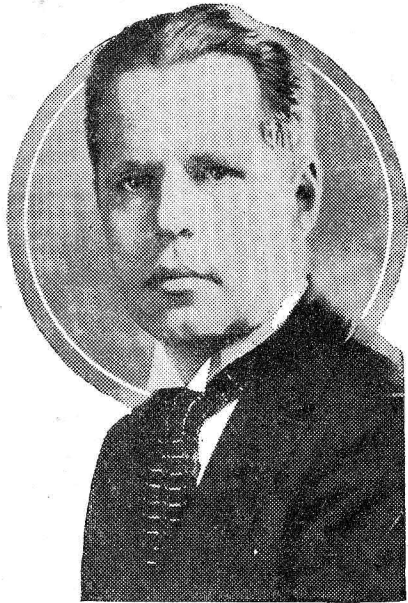
WMAK Buffalo, N. Y. (265.5m-1130kc) 10:25 a. m. service; 3 p. m., WFBL; 7:50, service.

WMCA New York, N. Y. (340.7m-880kc) 6 p. m. Komer's Homers; 7, Ernie Golden and his Hotel McAlpin orchestra; 9, Moment musicale; 10, Monte Carlo orchestra.

Large advertisement for Radiotone loud speaker. Features a large illustration of the speaker and text: '\$100 DOWN', '\$2500 Now Only \$9.95', 'A Wonder' says user: 'The Loud Speaker is a wonder. I never heard anything like it. I put it to a little test a few nights ago and it was heard clear and loud nearly one-half mile from my place through an open window.' Burton W. Cooswell, Brockton, Mass. The year's greatest loud speaker bargain—the genuine Radiotone, the very same loud speaker which has sold everywhere for \$25.00, now on this special sale at the amazing cut price of only \$9.95, and on terms of only \$1.50 a month! A rare opportunity! Seize it while it lasts. \$1.00 down brings it on 30 Days Trial Only \$1.00 with the coupon below brings this Genuine Radiotone loud speaker to your home on approval for 30 days! Use it freely at our risk, on trial for 30 days. See how loud, clear and distinct the Radiotone brings in all stations—better than any other loud speaker that you have ever heard, giving you the best that is in your set. After 30 days trial if you think you can get along without the Radiotone, return it to us and we will refund your dollar plus all transportation charges. The Radiotone is super-sensitive, brings in distant stations with full volume so every one in the room can hear distinctly and easily. Wonderful clearness and absolute purity of tone. No distortion. No vibration. 14-inch horn made of Thorite in one piece without seam or joint, acoustically correct. This eliminates the metallic clang you often hear in other loud speakers. Horn has graceful shape with beautiful black florduline finish. 23 inches high, weighs only 15 lbs. No extra batteries needed. Nothing to wear out or get out of order. Sent complete with cord and plug. \$1.50 a Month

Form for Straus & Schram coupon: Enclosed find \$1. Ship special advertised Radiotone Loud Speaker. I am to have 30 days free trial. If I keep the Radiotone, I will pay you \$1.50 monthly, total reduced price, \$9.95. The Radiotone is to become my property as soon as you receive the final payment. If not satisfied, I am to return it within 30 days and you agree to refund my money and any express charges I paid. Radiotone Loud Speaker No. Y8728JA—\$9.95. My Name, My Street Address, My Post Office, My Shipping Point, And before that I lived in, Occupation is, Married or Single, Nationality or Color, Give names of merchants who know you personally, Name, Town, State.

If you decide to keep the Radiotone, if you see that it is the peer of any loud speaker you ever heard, giving you the best there is in your set — if you see what a tremendous money saving bargain it is at this special smashed price, start paying only \$1.50 a month until you have paid only \$9.95. Think of it—a regular \$25.00 value! Where can you get a bargain like this? And how easy to pay. Send Coupon NOW We have only a limited number of Radiotones to offer on this special sale. First come, first served, and only one to a customer. So send coupon now—don't be disappointed. Remember—free trial, satisfaction guaranteed, your \$1.00 and all transportation charges refunded if you're not delighted. Send now. Straus & Schram Dept. R4411 Chicago, Ill.



Concert master of the Cincinnati Symphony orchestra and famous violinist, is Emil Heerman, whose Wednesday evening concerts have attracted the attention of music lovers to the ten o'clock hour of WLW. Associated with him are Walter Heerman, cellist; Thomie Prewitt Williams, pianist, and Melville Ray, tenor.

**KVOO Bristow, Okla. (374.8m-800kc)** 1-2 p. m. Walter Schoggan, Doris Kintner; 5-6, Gospel hour; 6-7, Sophia Osina, pianist; 7-9, services; 12-1, Melody Boys.

**KYW Chicago, Ill. (535.4m-560kc)** 11 a. m. Central church service; 4:30 p. m. Edwin Harper; 7-8:30, Sunday evening club; 9:30-11, classical concert.

**WBAP Fort Worth, Texas (475.9m-630kc)** 11 a. m. First Methodist; 5-6 p. m. vesper services, Baptist seminary; 9:30-11, Sorin-White Texas hotel orchestra.

**WBBM Chicago, Ill. (226m-1330kc)** 8 p. m. Coon-Sanders Night Hawks; 9-12, frolic; 12, Nutty club; Coon-Sanders orchestra.

**WCCO Minneapolis-St. Paul, Minn. (416.4m-720kc)** 10:50 a. m. services; 4:10 p. m. House of Hope Presbyterian church; 6:20, Second Church of Christ, Scientist; 8:15, WEAF; 9:15, musical program, Chippewa Indians; 10, St. Paul Municipal organ recital; Hugo Philler Goodwin.

**WCFL Chicago, Ill. (491.5m-610kc)** 4 p. m. Lutheran church; 7:45, Belden Avenue Baptist church.

**WDAF Kansas City, Mo. (365.6m-820kc)** 3-4 p. m. St. Paul's orchestra; 4:45, vespers.

**WEBH Chicago, Ill. (370.2m-810kc)** 10:35 a. m. Seventh Church of Christ Scientist; 5-6 p. m. twilight musicale; 7-9, artists' program.

**WEMC Berrien Springs, Mich. (315.6m-950kc)** 11 a. m. studio sacred services; 8:15 p. m. chapel.

**WENR Chicago, Ill. (265.3m-1130kc)** 2-3 p. m. chapel hour of music; 3-4, classical program; 9:30-12, All-American Pioneers.

**WFAA Dallas, Texas (475.9m-630kc)** 6-7 p. m. Bible class; 7:30-8:30, services; 8:30-9:30, artists; 11-12, orchestra.

**WGBF Evansville, Ind. (236.1m-1270kc)** 7:30 p. m. services.

**WGN Chicago, Ill. (302.8m-990kc)** 6:45-7 p. m. Blackstone string quintet, solo artists; 7, The Million Sing; 7:20, Old Fashioned Almanack; 7:30, Drake concert ensemble; Correll and Gosden; 8, Auld

Sandy; 8:15, WEAF; 9:15, Our Music Room; 10, Sam 'n' Henry; 10:10, Armand Buisseret, violinist; 10:20, Bible reading; 10:25, piano.

**WHAD Milwaukee, Wis. (275.1m-1090kc)** 3:15 p. m. Turverein concert.

**WHAS Louisville, Ky. (399.8m-750kc)** 10 a. m. services; 4:30-5:30 p. m. choral evensong.

**WHB Kansas City, Mo. (365.6m-820kc)** 9:40 a. m. Linwood Blvd. Christian church; 11-10:12:30, Independence Blvd. Christian church; 7-7:45, Dr. Burris A. Jenkins; 8-9, Westport Methodist church; 11-15-1, Merrill Moore, organist; Don Anchors, poet.

**WHO Des Moines, Iowa (526m-570kc)** 11 a. m. service; 5-6 p. m. Bankers Life Little symphony; 7:30-8:15, orchestra; 11-12, musical program.

**WHT Chicago, Ill. (399.8m-750kc)** 1-12 midnight, Paul Rader.

**WJAZ Chicago, Ill. (329.5m-910kc)** 4:30-9 p. m. Sunday evening concert.

**WJJD Mooseheart, Ill. (370.2m-810kc)** 7:45-8:45 a. m. Catholic services; 9:30-10:30, Protestant services; 1-2 p. m. Howard Peterson, organist; 2-2:30, Bible class; 2:30, Sacred song service; 3-4, popular concert; 4-5, Palmer House Sunday symphony orchestra.

**WLIB Chicago, Ill. (302.8m-990kc)** 5-6:15 p. m. Herbert Johnson, pianist; Leon Lichtenfeld, cellist; Tommy Coates, baritone; Blackstone string quintet.

**WLS Chicago, Ill. (344.6m-870kc)** 10:45 a. m. University of Chicago service; 12:15, Elsie Mae Look, organist; 1-1:30, trio; 1:30-2:30, chapel service; 6-8, WLS Little Brown church.

**WMBB Chicago, Ill. (249.9m-1200kc)** 3-6 p. m. Sunday afternoon concert; 7:40, church service; 9-11, Trianon orchestra, artists.

**WMC Memphis, Tenn. (499.7m-600kc)** 11 a. m. church service.

**WOC Davenport, Iowa (483.6m-620kc)** 1-2 p. m. old folks' musicale; 6:30-7, church service; 8:15-9:15, WEAF; 10-11, Palmer Little symphony.

**WOO Kansas City, Mo. (278m-1080kc)** 11 a. m. Unity service; 7 p. m. evening service; 7:45, Grand Avenue Methodist church.

**WORD Chicago, Ill. (275.1m-1090kc)** 10 a. m. I. B. S. A. service; 2:30 p. m. Chicago Rapid Transit company program; 3:30, Bible lecture; 7, Webster hotel duo orchestra; 9, I. B. S. A. choral singers.

**WOW Omaha, Nebr. (526m-570kc)** 9 a. m. Omaha Gospel tabernacle; 1:30 p. m. Father Flanagan's Boys' home period; 6, Bible study; 9, chapel service.

**WQJ Chicago, Ill. (447.5m-670kc)** 10:45 a. m.-12:45 p. m. People's church; 5-6, musical program; 10-11, popular program; Rainbo Gardens orchestra; Jack Klein, Adelaide Kerkoff, Harry Geise.

**WRR Dallas, Tex. (245.8m-1220kc)** 11 a. m. service; 8 p. m. service; 9:30, program.

**WSB Atlanta, Ga. (428.3m-700kc)** 5 p. m. sacred concert; 8, services.

**WSBC Chicago, Ill. (288.3m-1040kc)** 5-7 p. m. Sunday concert; 9-1, concert.

**WSM Nashville, Tenn. (282.8m-1060kc)** 10:30 a. m. service.

**Mountain Time Stations**

**KOA Denver, Colo. (322.4m-950kc)** 10:30 a. m. church service; 3 p. m. afternoon musicale; 6:30, organ; 7:45, church service.

**Pacific Time Stations**

**KFI Los Angeles, Calif. (467m-642kc)** 7-8 p. m. Jack Smith's dance orchestra; 8-9, Aeolian organ recital; 9-10, Bob Botzger's Venetians; 10-11, Packard Six dance orchestra.

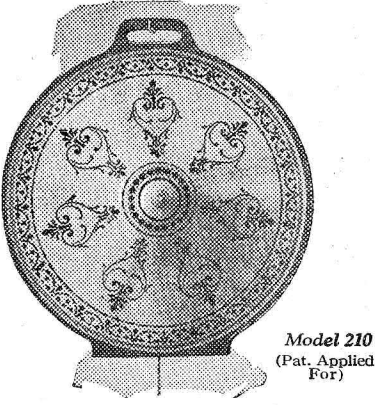
**KFWB Hollywood, Calif. (252m-1090kc)** 9-11 p. m. Warner Brothers Sunday night movie frolic.

**KGO Oakland, Calif. (361.2m-830kc)** 11 a. m. service; 2:45 p. m. symphony; 6:30-7:30, little symphony; 7:35, service; 9-10, symphony.

**KGW Portland, Ore. (491.5m-610kc)** 11 a. m. church; 7:30-9 p. m. church; 9-10, symphony orchestra.

**KHJ Los Angeles, Calif. (405.2m-740kc)** 7-8 p. m. service, First M. E. church; 8-10, Request program by Orpheus Four male quartet and Frederick MacMurray, viola soloist.

**Windsor Wall or Table Type Cone Speaker Amazes Radio World**



Model 210 (Pat. Applied For)

The latest model Windsor Cone Loudspeaker has astonished the world of radio. In convenience, quality of reception, and extremely low price, it far surpasses anything yet offered. The cone is 22 inches in diameter and is supported by an easel back. It can be hung up on the wall, as in the picture above, or stood upon any flat surface as shown in the picture below. It contains the famous Windsor loudspeaker unit noted for its extreme clarity and fidelity of reproduction.



Model 210 22-Inch Cone Loudspeaker with easel back.

\$15.00 (West of Rockies, \$18) (Pat. Applied For)

Model 302 (Shown below) With Moulded Composition Horn Loudspeaker and 18-inch Cone Loudspeaker.



Model 100 with Moulded Composition Horn Loudspeaker or 16-inch Cone Loudspeaker (Pat. Nov. 18, 1924)

Above is shown a beautiful Windsor Loudspeaker Console, finished in either Walnut or Mahogany, which provides ample space on top for any radio set. The battery shelf beneath will accommodate all necessary equipment. Equipped with either Moulded Composition Horn or 16-inch Cone Loudspeaker. Size: 38 in. x 18 in., and 29 in. high. Price: \$40.00 (West of Rockies, \$42.50)

To the right is shown the newest Windsor Loudspeaker Console. It is equipped with a 22-inch Cone Loudspeaker and cabinet suitable for 7-in. radio panels up to 26 inches in length. Battery shelf provides ample space for all equipment. Beautifully finished in either Walnut or Mahogany. Price (without receiving set)... \$44.00 (West of Rockies, \$52.00)

Note to Dealers: Write or wire today for details of the highly profitable Windsor line.

Electrical Department

**WINDSOR FURNITURE COMPANY**

1418 Carroll Avenue - CHICAGO, ILLINOIS  
Los Angeles Branch—917 Maple Avenue

**DANCE VOLUME!**

**ALL YOU WANT WITH POWERIZER**

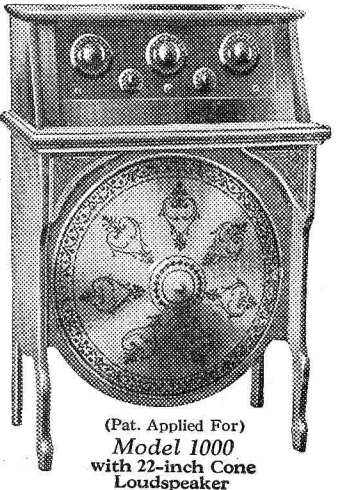
**Combined "B" Eliminator and Power Amplifier**

The orchestra is literally transported to your own home; every sound is so realistic, every note so full, that the music in all its perfection may clearly be heard above the din of voices and shuffle of dancing feet. Powerized radio reception has many revelations in store for you. You cannot know radio at its best today unless you hear it. Attaches to any set. Costs no more than a "B" Eliminator alone. Ask the nearest Powerizer Dealer to demonstrate this marvelous instrument TODAY.

RADIO RECEPTOR CO., 106 Seventh Ave. New York



Price only \$49.50



(Pat. Applied For) Model 1000 with 22-inch Cone Loudspeaker

KMTR Hollywood, Calif. (370.2m-810kc) 6:30-7 p. m. Leila Castberg's half hour; 7-8, Cafe Lafayette string quartet; 8-10, classical program.  
 KNX Hollywood, Calif. (336.9m-890kc) 6:30 p. m. service; 8, orchestra; 9, feature.  
 KPO San Francisco, Calif. (428.3m-700kc) 6 p. m. States Restaurant orchestra; 6:35, Palace hotel concert orchestra; 8:35-10, Rudy Seiger's Fairmont hotel concert orchestra; 10-12, Trionon ballroom.  
 KPSN Pasadena, Calif. (315.6m-950kc) 10:30 a. m. Family Altar service, United Brotherhood.

**Sunday, silent night for:** CKAC, CKNC, CNRW, KFDY, KFXP, KLI, KMA, KOB, KSWC, KWVG, WAIQ, WCL, WCOA, WDAF, WDEJ, WFI, WGBF, WCHS, WGNP, WHAD, WHS, WIJD, WJR, WLIT, WLWL, WMAQ, WMC, WNYC, WOI, WOO, WOOD, WOR, WSMB, WRVA, WSW, WTIC.

Eastern	Central	Mountain	Pacific
8:40 p. m.	7:40	6:40	5:40
WGDF (236m-1270kc) Gospel trio.			
CHIC (356.9m-690kc) French Organie orchestra.			
WCOA (252m-1190kc) Mrs. George Turner, whistler.			
WRR (245.8m-1220kc) Magnolia Dallas band.			
9:15	8:15	7:15	6:15
WCOA (252m-1190kc) lilted melodies.			
9:30	8:30	7:30	6:30
WHAD (275.1m-1090kc) Moments with old masters.			
9:45	8:45	7:45	6:45
WCOA (252m-1190kc) Young Ladies chorus.			
10	9	8	7
KTHS (374.8m-800kc) 10 p. m., folk songs of all nations.			
WRVA (256m-1170kc) oratorio, Singers club.			
10:15	9:15	8:15	7:15
KOA (322.4m-930kc) Greeley Philharmonic orchestra.			
WCOA (252m-1190kc) Viscuso international trio.			
10:30	9:30	8:30	7:30
KPRC (296.9m-1010kc) Harry Schmidt, violinist.			
WBAP (475.9m-630kc) Crowley old time fiddlers.			
WRR (245.8m-1220kc) Southern Melody chanters.			
11:10	10:10	9:10	8:10
KTHS (374.8m-800kc) Natalie Arnoux, violinist.			
11:30	10:30	9:30	8:30
WBAP (475.9m-630kc) Lawrence Smith, pianist.			
12:30 a. m.	11:30	10:30	9:30
WCCO (416.4m-720kc) Elsie Thompson, organist.			

**MONDAY, JANUARY 3**

Eastern	Central	Mountain	Pacific
6 p. m.	5	4	3
WGBS (315.6m-950kc) Sorey trio.			
7:15	6:15	5:15	4:15
WTIC (475.9m-630kc) Helen Hudson.			
7:30	6:30	5:30	4:30
KSO (405.2m-740kc) J. P. McElroy old time music.			
WEAA (475.9m-630kc) Joe Baldwin, Jr., banjo-kulele.			
8	7	6	5
CHIC (356.9m-690kc) Amplion Little symphony.			
WCOA (252m-1190kc) U. S. Naval air station band.			
WGR (319m-940kc) Fredro singing society.			
WTIC (475.9m-630kc) New Departure band.			
8:30	7:30	6:30	5:30
WBAP (475.9m-630kc) song shop.			
9	8	7	6
WCOA (252m-1190kc) W. V. Fauria, vocalist.			
WIAR (485m-618kc) Colonial entertainers.			
WLW (422.3m-710kc) Synchronized orchestra.			
WRR (245.8m-1220kc) Corrinne Brignardello, soprano.			
9:20	8:20	7:20	6:20
WCOA (252m-1190kc) Elizabeth Moreno, pianist.			
9:30	8:30	7:30	6:30
KPRC (296.9m-1010kc) Dr. Earle J. Shay, tenor.			
WHAD (275.1m-1090kc) Atlas quartet.			
WRVA (256m-1170kc) Mary Patteson, artist ensemble.			
9:45	8:45	7:45	6:45
KPRC (296.9m-1010kc) Richard Shannon, xylophonist.			
9:50	8:50	7:50	6:50
WCOA (252m-1190kc) Dr. C. J. Heinberg, violinist.			
10	9	8	7
KOIL (305.9m-980kc) "The Golden Wedding Gift" play.			
WCCO (416.4m-720kc) Walter Mallory, tenor.			
10:15	9:15	8:15	7:15
KOA (322.4m-930kc) Gems from light opera.			
WHAD (275.1m-1090kc) Echoes from distant lands.			
10:30	9:30	8:30	7:30
WBAP (475.9m-630kc) Grapevine fiddle band.			
WRR (245.8m-1220kc) Radio Post No. 404, American Legion.			
11:30	10:30	9:30	8:30
WBAP (475.9m-630kc) Lawrence Smith, pianist.			
12	11	10	9
CHIC (356.9m-690kc) George H. Graham, organist.			
KPT (467m-642kc) Loren Powell's Little symphony.			
KOIL (305.9m-980kc) "Mose and Charley."			

**MONDAY, JANUARY 10**

**Headliners**

Eastern	Central	Mountain	Pacific
7:30 p. m.	6:30	5:30	4:30
KSO (405.2m-740kc) concertina artist.			
8	7	6	5
WCOA (252m-1190kc) 13th Coast Artillery band.			
8:30	7:30	6:30	5:30
KPRC (296.9m-1010kc) Houstonians.			
WBAP (475.9m-630kc) Northern Texas Traction company.			
WGBF (236m-1270kc) Castle of Air program.			

**Educational Features Monday**

Eastern	Central	Mountain	Pacific
2:30 p. m.	1:30	12:30	11:30
WTAM (389.4m-770kc) Music appreciation.			
5:15	4:15	3:15	2:15
WMAQ (447.5m-670kc) Radiophon's Guide to Music.			
6	5	4	3
WGN (302.8m-990kc) "Correct English."			
6:30	5:30	4:30	3:30
WNYC (526m-570kc) Elementary German lessons, V. H. Berlitz.			
7	6	5	4
WDAF (365.6m-820kc) School of the Air.			
WNYC (526m-570kc) Advanced German lessons.			
7:15	6:15	5:15	4:15
WEAF (491.5m-610kc) Columbia University.			
7:45	6:45	5:45	4:45
KDKA (309.1m-970kc) University of Pittsburgh, Jan. 3, "Hobbies," Dr. John G. Bowman.			
7:55	6:55	5:55	4:55
WDBO (239.9m-1250kc) Rollins college.			
8:30	7:30	6:30	5:30
WIAZ (379.5m-790kc) Educational address.			
WSUI (483.6m-620kc) U. of Iowa courses.			
9:30	8:30	7:30	6:30
KOB (348.6m-860kc) N. M. state college.			

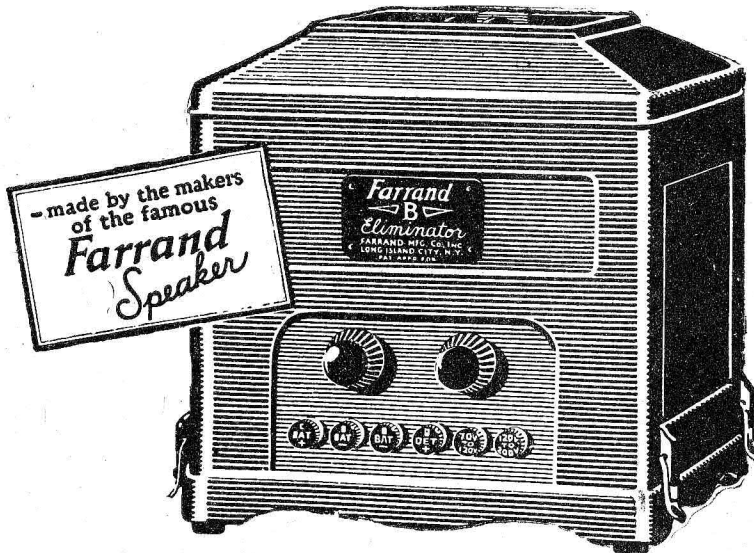
**Regular Monday Features**

**Eastern Time Stations**

CFCA Toronto, Can. (356.9m-840kc) 6:15 p. m. dinner concert; 7:15, organ recital, Clifford McCormick.  
 KDKA Pittsburgh, Pa. (309.1m-970kc) 8 p. m. feature; 9, light opera.  
 WABC New York, N. Y. (315.6m-850kc) 7:30-10 p. m. program.  
 WEAL Baltimore, Md. (246m-1220kc) 6:30-7:30 p. m. dinner orchestra; 7:30-8, organ recital, Frederick Weaver; 8-9, musical program; 9:10-10, ensemble; 10-11, concert, Roberta Glanville, soprano; Helene Broemer, cellist; George Bolek, pianist; 11-12, dance orchestra.  
 WBZ Springfield, Mass. (333.1m-900kc) 7 p. m. organ; 7:30, talk; 8, orchestra; 8:30, trio; 9, band; 9:30, feature; 10:03, music.  
 WCAE Pittsburgh, Pa. (461.3m-650kc) 6 p. m. William Penn hotel orchestra; 7:45, talks; 8, dance music; 9-11, WEAF; 11, Zez Confrey's orchestra.  
 WCAU Philadelphia, Pa. (277.6m-1080kc) 7:30 p. m. Snellenburg recital; 8, Skiler's Skylarks; 8:25, recital; 8:45, Merry Minstrels; 9:30, trio; music; 10:30, Parodians' dance orchestra.  
 WCX Detroit, Mich. (516.3m-550kc) 6-7 p. m. dinner program, Goldkette ensemble; 8, studio program.  
 WDBO Winter Park, Fla. (239.9m-1250kc) 8:55 p. m. citrus talk; 9:10, musicale.

# NOW

at all better radio dealers



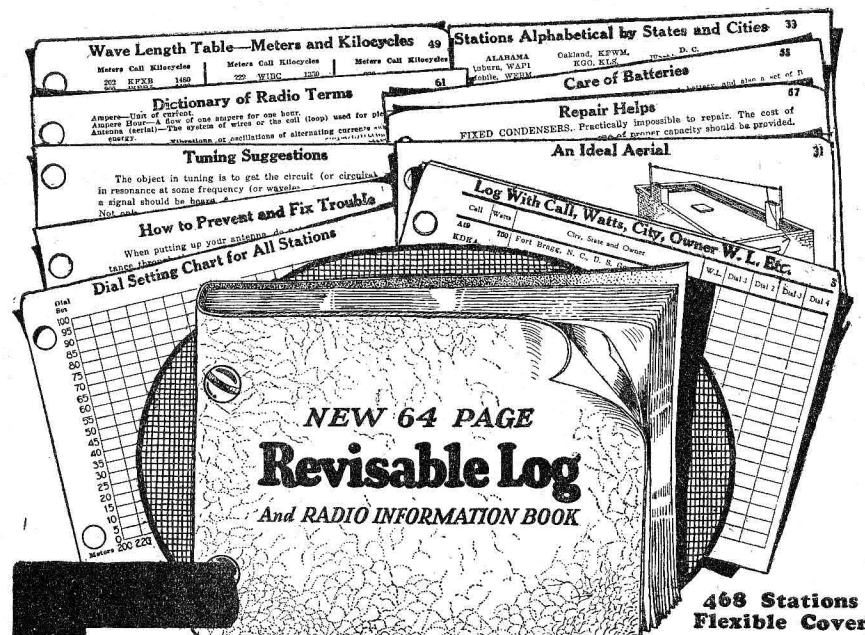
## the long awaited perfect B-Battery Eliminator

HERE IT IS—a heavy-duty "B" Battery Eliminator which marks as decided an advance in Eliminators as did the Farrand Speaker in reproducers. The Farrand "B" Eliminator not only takes the place of "B" batteries, but supplies high-voltage capacity heretofore unobtainable in battery eliminating devices—an output of 75 milli-amperes. It is totally free from hum, even on ear-phones! It is troubleproof and foolproof. There are no adjustments, no controls, no fussy meters to watch. Nothing to wear out. Requires no acid or water. Its performance—quiet, powerful, certain—will prove a revelation to radio owners everywhere.

\$48.50

without tube  
*Slightly higher West of Rockies*

THE Farrand "B" Eliminator operates on 60 cycle, A. C. and can be used with receiving sets of almost any type, providing ample current for sets up to ten tubes. The following voltage is provided: 15 to 70 volts on detector tube; 60 to 100 volts to radio frequency tubes; 135 to 200 volts on last audio stage—equivalent to one stage of power amplification. It employs only one rectifying tube—either UX-213 or CX-313.



# Free LOG

NEW 64 PAGE Revisable Log And RADIO INFORMATION BOOK

468 Stations Flexible Cover

To introduce our new 64 page automatic loose leaf Log and Data Book into more communities, for a limited time, we make the special free offer below to 1 person only in each neighborhood. This log is truly revisable and can be kept up to date. We publish corrected sheets as changes in calls, wave lengths (meters or kilocycles) wats, owners, addresses, etc., occur and as new data comes out. New pages inserted in a moment. Permanently accurate.

Log pages contain 468 stations, 4 dial settings, remarks, etc. Check full of information absolutely essential to radio enjoyment. Tuning Suggestions, Station lists numerical by wave lengths—alphabetical by states, by cities, etc. Dictionary Radio terms. Repair Helps. Diagram and description for ideal aerial. Trouble preventions and aids. Care of batteries, etc., etc. Chart showing dial setting for each station included FREE. Beautiful flexible cover (gold letters). So convenient. You and your children will enjoy it. Doubles radio pleasure. And it's perpetual. For limited time only, we will send this invaluable Log and Radio Information Book absolutely FREE to those ordering revision service—only \$1. (You can order 2 services and get 2 logs if you desire.)

**Send No Money—See Coupon**

**Radio Printers, Dept. 44115**  
 Marengo, Illinois

Send 64 page Log Book absolutely FREE. I will pay post-man \$1 for revision service and few cents postal charges on book after it arrives. Money to be refunded if I am not DELIGHTED. To be sole judge.

(If \$1 bill or check is enclosed, postal charges will be prepaid.)

Name.....  
 Address.....  
 City.....State.....  
 Send Coupon NOW—while offer lasts.

# Farrand

# B

# ELIMINATOR

FARRAND MFG. CO., INC. LONG ISLAND CITY, N. Y.



Pretty, which is enough for some girls, Auriole Craven, above, sings, dances and plays the violin at the Rainbo Gardens nightly. Her voice may be heard over WQJ.

**WEAF New York, N. Y. (491.5m-610kc)** 6 p. m. dinner music (regular); 7, music; 7:15, Columbia University talk; 7:30, House of Myths; 8:15, talk; 9 A. & P. Gypsies, WEEL, WIAR, WRC, WCSL, WCAE, WTAM, WLIT, WWJ, WDAF, WSAI (regular); 10, WEAF Grand opera company, WIAR, WCO, WCAE, WCSH, KSD, WDAF, WSAI, WLIT; 11, Rolie's Palais D'Or orchestra.

**WEEL Boston, Mass. (348.6m-860kc)** 6:45 p. m. Big Brother club; 8, book talk; 9-10, WEAF; 10, music.

**WFI Philadelphia, Pa. (394.5m-760kc)** 6:45 p. m. Adelpia French Room orchestra.

**WGBS New York, N. Y. (315.6m-950kc)** 6 p. m. trio.

**WGHB Clearwater, Fla. (265.3m-1130kc)** 8 p. m. story lady; 8:29, reports; 8:30, studio program; 10:30-12, dance program.

**WGHP Detroit, Mich. (270.1m-1110kc)** 6-8 p. m. dinner concert, Hotel Tuller; 8-8:30, Little symphony orchestra; 8:30-9:30, famous composer's hour; 9:30-10, Astringosolists.

**WGR Buffalo, N. Y. (319m-940kc)** 6:30-7:30 p. m. dinner music; 8:30, musicale; 9-10, dance program, WQJ; 11-1, supper music.

**WGY Schenectady, N. Y. (379.5m-790kc)** 6:30 p. m. dinner music, Hotel Van Curler.

**WHAZ Troy, N. Y. (379.5m-790kc)** 8-12 mid., music, talks.

**WHK Cleveland, Ohio (272.6m-1100kc)** 7-9 p. m. specialty night; 9-10, studio concert; 10-10:30, Whozit; 10:30-11:30, Melody Masters.

**WHN New York, N. Y. (361.2m-830kc)** 6:30 p. m. WHN Radio Movie club; 7:30, Melody handbox; 8:30, Roseland dance orchestra; 10:30, orchestra; 11, entertainers; 11:30, Cotton Club orchestra; 12, Silver Slipper orchestra.

**WICC Bridgeport, Conn. (232.4m-1290kc)** 7 p. m. kiddies' story; 7:30, studio program; 9, theater presentation.

**WIP Philadelphia, Pa. (508.2m-590kc)** 6:10 p. m. Benjamin Franklin concert orchestra; 7, Uncle Wip's bedtime stories; dancing lessons.

**WJAX Jacksonville, Fla. (336.9m-890kc)** 7-7:30 p. m. Hotel Carling dinner music; 8-9, popular program; 9-10, classical music; 11-12, Arcade theater.

**WJR Detroit, Mich. (516.9m-580kc)** 7 p. m. Jean Goldkette's Petite symphony orchestra, soloists; 7:15, Caspar Lingeman entertainers; 7:45, Good Will Oakland and Chief Pontiac; 9, studio program.

**WJZ New York, N. Y. (454.3m-660kc)** 7 p. m. Hotel Commodore concert orchestra; 7:55, John B. Kennedy; 8, Markel's dance orchestra; 8:30, Willys Overland; 9:30, Thayer West Point Cavaliers; 10:30, Waldorf-Astoria grill dance orchestra.

**WKRC Cincinnati, Ohio (422.3m-710kc)** 6:15 p. m. Hotel Aims orchestra; 8, musicale.

**WLIT Philadelphia, Pa. (394.5m-760kc)** 7:55 p. m. Salicon weatherman; 8, WEAF; 10, WEAF; 11, dance orchestra.

**WLW Cincinnati, O. (422.3m-710kc)** 7 p. m. Robert Visconti's orchestra; 7:40, Visconti's orchestra; 8, program; 10, musicale; 11, studio program.

**WLWL New York, N. Y. (288.3m-1040kc)** 8 p. m. musicale; 8:30, McEvoy concert; 9, question box; 10, music.

**WMAK Buffalo, N. Y. (265.5m-1130kc)** 6:15 p. m. dinner music; 7:30, dance program; 8:30, travelog.

**WMCA New York, N. Y. (340.7m-860kc)** 7-11 p. m. club.

**WNYC New York, N. Y. (526m-570kc)** 6 p. m. Piano selections; 6:20, piano selections.

**WOO Philadelphia, Pa. (508.2m-590kc)** 11 a. m. Organ recital; 12:02 p. m. Tea Room orchestra; 5:15, organ recital; 7:30, Sylvania dance orchestra; 8, organ recital, Mary E. Vogt; 8:30, address, Rev. Forest E. Dager; 9, concert; 10:30, Sam Brown's dance orchestra.

**WOR Newark, N. J. (405.2m-740kc)** 6:15 p. m. Jacques Jacobs' Hotel Shelton ensemble; 6:45, Bill Wathey in sports; 7, Jacques Jacobs' Hotel Shelton ensemble; 8:45, N. Y. U.; 9, musicale; 11, Jascha Guerwich's dance orchestra.

**WPG Atlantic City, N. J. (299.8m-1000kc)** 7:15 p. m. Arthur Brook, organist; 7:30, Hotel Morton dinner music; 8:05, Hotel Shelburne dinner music; 8:30, program; 9, program; 10:30, music; 11, dance orchestra.

**WRC Washington, D. C. (468.5m-640kc)** 7 p. m. dinner music; 8, Emerson hour; 9, to be announced; 10, WEAF; 11-12, Loew's Palace theater.

**WRVA Richmond, Va. (256.3m-1170kc)** 8:15. Evening program; 9, "Virginia Folk Lore," Dr. Douglas S. Freeman; 9:10, music; 11, Hotel Richmond Winter Garden orchestra.

**WSAI Cincinnati, Ohio (325.9m-920kc)** 6:45 p. m. quintet; 7:30-11, WEAF; 11, dance music.

**WSK Bay City, Mich. (260.7m-1150kc)** 9-11 p. m. dance music.

**WTAG Worcester, Mass. (545.1m-550kc)** 7:15 p. m. program to be announced.

**WTAM Cleveland, Ohio (389.4m-770kc)** 6 p. m. Guy Lombardo's Royal Canadians; 7, Allen Theater orchestra; 8, orchestra; 9, WEAF; 10, Willard concert orchestra; 11, Emerson Gill and Bamboo Garden orchestra.

**WTIC Hartford, Conn. (475.9m-630kc)** 6 p. m. Mother Goose; 6:30, Hotel Bond trio; 7, program; 11, Walter Dawley, organist.

**WWD Detroit, Mich. (352.7m-850kc)** 6 p. m. Dinner concert; 8, musical program; 9, WEAF.

**Central Time Stations**

**CKY Winnipeg, Can. (384.4m-780kc)** 8:30-9 p. m. Studio program; 9-10, Stewart Warner concert; 10-11, Reliable battery hour; 11-12, Capitol theater revue.

**KFAB Lincoln, Nebr. (340.7m-880kc)** 5:30-6:30 p. m. Hotel Lincoln orchestra; 8:30-10:30, musicale.

**KFNF Shenandoah, Iowa (461.3m-650kc)** 7 p. m. Seed concert; 11, old time music.

**KMA Shenandoah, Iowa (461.3m-650kc)** 9-11 p. m. Farnham trio.

**KMOX St. Louis, Mo. (280.2m-1070kc)** 6 p. m. Organ; 6:30, quartet; 7, quartet; 8, quartet; 9, soloists; 10:15, orchestra; 12-1, orchestra.

**KOIL Council Bluffs, Iowa (305.9m-980kc)** 7:03 p. m. Hotel Lassen program, Don Hill and his ukulele; 7:30, musicale; 8, program; 9, play; 10, Crosley hour; 11, program.

**KPRC Houston, Texas (299.8m-1000kc)** 7:30 p. m. Houstonians; 8:30, concert; 9, studio concert.

**KSO Clarinda, Iowa (405.2m-740kc)** 6:30 p. m. old-time music.

**KTHS Hot Springs National Park, Ark. (374.8m-800kc)** 9-11:20 p. m. musicale.

**KVOO Bristow, Okla. (374.8m-800kc)** 6-7 p. m. Warner trio; 7-8, quartette; 8-9, Luckey's orchestra; 12, Earl Thurston, organist.

**WBAP Fort Worth, Texas (475.9m-630kc)** 7:30-8:30 p. m. Classical concert; 9:30-11, old time music; 11-12, midnight musicale.

**WCCO Minneapolis-St. Paul, Minn. (416.4m-720kc)** 6:15 p. m. St. Paul hotel orchestra; 8, U. of Minn.; 9, Vagabonds; 10:10, dance program; 11:30, organ, Elsie Thompson.

**WCOA Pensacola, Fla. (252m-1190kc)** 6:30 p. m. WCOA happiness period.



# Your program starts with a snap-

It does if your "snap" judgment is good! Because good reception demands lively batteries. And that's what you get when you snap on your Rectigon to do your charging. The time to start bringing in tomorrow's snappy program is tonight—after the last station signs off. You just plug into the light socket and attach the terminals. That keeps your batteries at their peppy best. That saves service station bother. And you'll never be caught with batteries run down, or absent for charging when the week's best program is on the air.

when you charge 'em at home with

# The Westinghouse Rectigon Battery Charger

©, 1927, W. E. & M. Co.

No noise as it charges—not a bit of fuss. Not even a murmur that would disturb the mildest slumber.



No acids, no chemicals—no moving parts—nothing to spill or burn. No muss, no worry. You'll have no spoiled rugs, no ruined clothing.



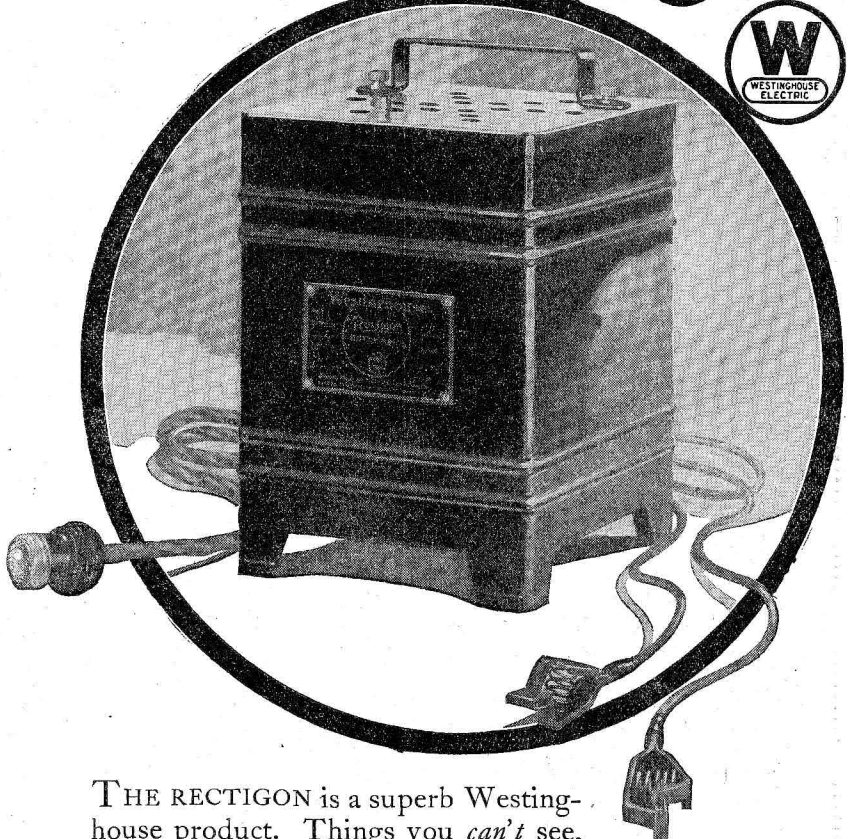
Saves its cost in short order—Count the dollars spent in a few trips to the service station and you'll hotfoot it for a Rectigon, for the good it does your pocketbook as well as your batteries.



Charges both "A" and "B" batteries—Keeps both packed with power. Bulb is used for "B" battery charging and is enclosed, like all other parts, in metal, safe from accident. (Rectigon charges automobile batteries, too.)

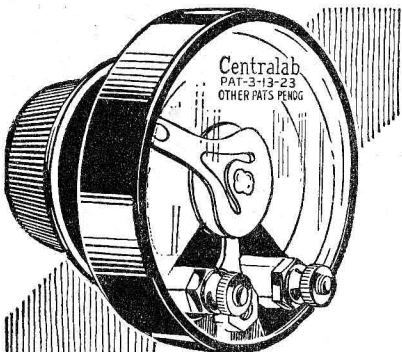


Perfect safety for your set—If you tune in while you're charging there'll be no harm either to set or batteries. Nor will batteries be discharged if anything happens to the current while your Rectigon's attached.



THE RECTIGON is a superb Westinghouse product. Things you can't see, like extra heavy insulation, things you can see, like the durably enameled case—all are of highest quality. Westinghouse also manufactures a complete line of radio instruments, and Micarta panels and tubes.

WESTINGHOUSE ELECTRIC & MANUFACTURING CO.  
Tune in on KDKA - KYW - WBZ - KFKX



STANDARD  
**Centralab Radiohm**  
In Rebuilding an Old Set, in Building a New Set—Use Centralab Radiohms for Greater Efficiency—

MOST any radio circuit is improved by using Radiohms of proper value. They hold that sensitive position just preceding oscillation that gives greatest distance, volume and tone, and their adjustment is always gradual and noiseless. They give full control of tone and volume. They provide "B" battery voltage control for the new detector tubes or for "B" Eliminators. Radiohms are furnished in resistance values for every radio purpose, all smoothly variable to zero with a single turn of the knob. . . . . **\$2.00**

A Centralab Radiohm is used in the popular Bruno Circuit, as well as the Infradyne, Henry Lyford, Varion, and many others.

See your dealer, or write for circuit booklet. CENTRAL RADIO LABORATORIES 12 Keefe Ave., Milwaukee, Wis.

Use radio parts of proven high quality. Centralab Radiohms and other variable resistances are used by sixty-nine well known set manufacturers.



No Storage Battery Radio is Complete Without a Rectigon

**WDAF Kansas City, Mo. (365.6m-820kc)** 6-7 p. m. School of the air; 8-9, WDAF; 9-10, WDAF; 11:45-1 Nighthawk frolic.

**WEMC Berrien Springs, Mich. (315.6m-950kc)** 8:15 p. m. Lighthouse Music Makers.

**WFAA Dallas, Texas (475.9m-630kc)** 6:30-7:30 orchestra; 8:30-9:30, Sears-Roebuck Agricultural Foundation program.

**WGBF Evansville, Ind. (238m-1270kc)** 7 p. m. radio-graph; 7:20, children's program; 7:40, Gospel trio; 8 studio program; 9, orchestra.

**WHAD Milwaukee, Wis. (275.1m-1090kc)** 6:15 p. m. organ recital; 8:30, headliner; 9:15, old favorite hour, strong trio; 9:45, popular program.

**WHB Kansas City, Mo. (365.6m-820kc)** 7 p. m. Sweeney Radio orchestra.

**WHO Des Moines, Iowa (526m-570kc)** 7:30-8 p. m. music; 8-9, dance orchestra; 11-12, dance program.

**WLS Chicago, Ill. (344.6m-870kc)** 5:40 p. m. Al Melgard, organist; 6, supperbell program; 6:40, Maurice Sherman's College Inn orchestra.

**WMC Memphis, Tenn. (499.7m-600kc)** 8:30 p. m. Bridling Music Makers.

**WOOD Grand Rapids, Mich. (241.8m-1240kc)** 9 p. m. popular program; 9:30, band; 9:45, Wood Revelers; 10, Woods, Whozit; 10:10, piano recital; 10:20, specialty; 11, air mail hour; 12, woodpile.

**WQQ Kansas City, Mo. (278m-1080kc)** 6:15 p. m. Unity Inn orchestra.

**WOS Jefferson City, Mo. (440.9m-680kc)** 7:30 p. m. Missouri music appreciation contest; 8, program.

**WOW Omaha, Nebr. (526m-570kc)** 6 p. m. Joe Bauer and his Highway Gardens orchestra; 6:50, classical; 9, Nash-Finch orchestra.

**WRR Dallas, Tex. (245.8m-1220kc)** 6 p. m. music; 8, band; 9:30, frolic.

**WSB Atlanta, Ga. (428.3m-700kc)** 8 p. m. Sears Roebuck program; 10:45, program.

**WSMB New Orleans, La. (319m-940kc)** 8:30 p. m. dance night; 11:30, Radio varieties.

**WSOE Milwaukee, Wis. (245.8m-1220kc)** 7 p. m. program; 8, Whozit.

**Mountain Time Stations**  
**KOA Denver, Colo. (322.4m-930kc)** 8 p. m. Scheuerman's Colorado orchestra; 8:15, studio program.  
**KOB State College, N. M. (348.6m-860kc)** 7:30 p. m. State College orchestra.

**Pacific Time Stations**  
**KFI Los Angeles, Calif. (467m-642kc)** 7-8 p. m. Owen Fallon's Californians; 8-9, popular program; 9-10, program, Walter M. Murphy Motors Co.; KPO; 10-11, program by Meiklejohn Brothers.  
**KFWB Hollywood, Calif. (525m-1190kc)** 6-7 p. m. Pontiac dinner hour; 7:50, news; 9-10, program; 10-11, Warner Br. frolic.  
**KGO Oakland, Calif. (381.2m-830kc)** 6-6:55 p. m. Stanislas Dem's Little symphony; 8-9, Gondoliers; 9, "Chats about New Books," Joseph Henry Jackson.  
**KGW Portland, Ore. (491.5m-610kc)** 7:45-8 p. m. talk; 8-9, vaudeville; 10-12, dance music.  
**KJR Seattle, Wash. (384.4m-780kc)** 6:30 p. m. dinner hour; 8-8:30, program; 8:30-10, program.  
**KLX Oakland, Calif. (508.2m-590kc)** 8-9 p. m. Studio program, Piggly Wiggly company; 9-10, Lake Merritt Ducks.  
**KMTR Hollywood, Calif. (370.2m-810kc)** 8-10, program; 10-12, Palais de Danse.  
**KNX Hollywood, Calif. (336.8m-890kc)** 7:30 p. m. playlet; 8, program; 9, feature; 10, Alexandria hotel orchestra; 11, frolic.  
**KPO San Francisco, Calif. (428.3m-700kc)** 6:30-7 p. m. States Restaurant orchestra; 7-7:30, Rudy Seiger's Fairmont hotel concert orchestra; 8-9, music; 9-10, Gypsy and Marta; 10-11, Mandarin cafe orchestra; 11-12, variety hour.  
**KWSC Pullman, Wash. (348.6m-860kc)** 7:30 p. m. Students concert.

Monday, silent night for: CFCA, CKAC, KFDM, KFDY, KGO, KHJ, KLD, KPSN, KYW, PWX, WBBM, WCB, WCFL, WEBB, WEBJ, WENK, WFI, WGBF, WGBS, WGES, WGN, WGY, WHAS, WHI, WIBO, WIP, WJAZ, WJJD, WLBB, WLS, WMAQ, WMBB, WOAL, WOC, WOK, WORD, WQJ, WSAI, WSW.

Mendelssohn; March Militaire, Franz Schubert; Marche Slave, Peter Tschaikowsky, WTIC (475.9m-630kc) McCoy's Music Masters. 8:15 7:15 6:15 5:15  
 WEBJ (272.6m-1100kc) Joseph Zablou, baritone. 8:30 7:30 6:30 5:30  
 KPRC (296.9m-1010kc) Kensington Hall orchestra. 9 8 7 6  
 WBAP (475.9m-630kc) Wagoner Hawaiian trio.  
 WEBJ (272.6m-1100kc) Alamo dance orchestra.  
 WHAS (399.8m-750kc) Carl Zoeller's Melodists.  
 WOC (483.6m-620kc) Silver King orchestra. 9 8 7 6  
 WCB (344.6m-870kc) Brass quartet.  
 WLW (422.3m-710kc) Formica orchestra. 10:30 9:30 8:30 7:30  
 WBAP (475.9m-630kc) CC's concert ensemble. 10:35 9:35 8:35 7:35  
 KPRC (296.9m-1010kc) Earl McMahan's orchestra.

**TUESDAY, JANUARY 11**

**Headliners**

Eastern	Central	Mountain	Pacific
7 p. m.	6	5	4
WEAF (491.5m-610kc) William Lawlor, baritone.		WRR (245.8m-1220kc) Marguerite Fifer and her orchestra.	
7:45	6:45	5:45	4:45
WEBJ (272.6m-1100kc) Dorothy Eisenstadt, soprano.			
8	7	6	5
WRNY (374m-802kc) Laugh and the World Laughs, Overture to the Secret of Suzanne, Ermanno Wolf-Ferrari; Melody of Gilbert and Sullivan Gems; Die Fledermaus, Johann Strauss; comic opera artist; carnival of Venice, David Robinson, violinist; Dance of the Clowns, Vladimir Rehkov; Danse Chinoise, Peter Tschaikowsky; Marche Joyeuse, Emanuel Chabrier. 8:15 7:15 6:15 5:15			
WEBJ (272.6m-1100kc) Carl Corballis, baritone. 8:30 7:30 6:30 5:30			
WBAP (475.9m-630kc) Hawaiian trio.			
WEBJ (272.6m-1100kc) Bert McGrath, songs. 9 8 7 6			
WHAS (399.8m-750kc) Eddie Rosson and his orchestra.			
WRR (245.8m-1220kc) Harry Sory's entertainers.			

**Educational Features**

**Tuesday**

Eastern	Central	Mountain	Pacific
6 p. m.	5	4	3
WCN (302.8) Spanish lesson. 6:30 5:30 4:30 3:30			
WNYC (526m-570kc) Elementary Italian lessons. 7 6 5 4			
KVOO (374.8m-800kc) University of Tulsa.			
WDAF (365.6m-820kc) School of the Air.			
WNYC (526m-570kc) Advanced Italian lessons.			
WTIC (475.9m-630kc) Trinity college course. 7:10 6:10 5:10 4:10			
WEAF (491.5m-610kc) Columbia university. 7:30 6:30 5:30 4:30			
KSAC (340.7m-880kc) College of the Air. Sociology.			
WEEL (348.6m-860kc) Jan. 4, John A. Cousins, Pres. of Tu; Jan. 11, Ada Comstock, Pres. of Radcliffe college. 7:45 6:45 5:45 4:45			
KDKA (309.1m-970kc) U. of Pittsburgh, Jan. 4, "Gold," E. G. Hill. 8 7 6 5			
KSAC (340.7m-880kc) Jan. 4, "The Duckbill, Kangaroo and Opossum," Dr. Nabours; Jan. 11, "Fur Bearing Animals," Earl Herrick. 9:10 8:10 7:10 6:10			
WMAQ (447.5m-670kc) University of Chicago. 10 9 8 7			
WMAQ (447.5m-670kc) Glimpses into foreign service.			
WIZ (454.3m-660kc) WGY (379.5c-790kc) Cook's tours. 10:30 9:30 8:30 7:30			
KFMX (336.9m-890kc) Jan. 4, "The Transmission of Disease," Jan. 11, "Disinfection."			

**Regular Tuesday Features**

**Eastern Time Stations**  
 CKAC Montreal, Que., Can. (410.7m-730kc) 7:15 p. m. dinner concert; 8:15, hop; 9:30, bridge; 10:30, dance program.  
 KDKA Pittsburgh, Pa. (309.1m-970kc) 8 p. m. sacred song concert; 8:45, gems from American literature; 9, musicale; 11:35, Grand theater.  
 PWX Havana, Cuba (399.8m-750kc) 8:30-11:30 p. m. program.  
 WBAL Baltimore, Md. (246m-1220kc) 6:30-7:30 p. m. dinner orchestra; 7:30-8, quartet; 8-9, trio; 9-9:30, Jubilee singers; 9:30-10, violin and piano recital; Michael Weiner, violinist; LeRoy Evans, pianist; 10-11, Municipal band of Baltimore; 11-12, dance orchestra.

**APPROVED BY 18 MONTHS OF PUBLIC USE  
NO OTHER BATTERY IS LIKE IT**



*Practical tests prove this new product to be the most economical of "B" batteries*

IN DAILY use in the home, Eveready Layerbilt "B" Battery No. 486 has fulfilled the promises made for it in laboratory tests. More than a year's study of the performance of this battery in the hands of the public has shown that it is the most satisfactory and most economical "B" battery ever developed. All loud-speaker sets require Heavy-Duty batteries — and the Layerbilt has proved itself absolutely the best of them all.

deal of space is wasted between the cells. The Layerbilt is built up of layers of flat current-producing elements, that make connection with each other automatically, and that fill all available space inside the battery case. It is every inch a battery. In it you get more active materials than in any other battery and the Layerbilt construction makes those materials more efficient.

Those are the reasons why the Eveready Layerbilt has proved itself the longest lasting, most economical and reliable "B" battery ever built.

If you are now using the smaller, Light-Duty batteries, the Eveready Layerbilts will give you twice the service, though they do not cost anything like twice as much. If you are already using Heavy-Duties, the Layerbilt, the longest lasting Heavy-Duty ever built, will run your set at least 25% longer, and again you will save money. Unless Eveready Layerbilts are connected to your set, you are spending more on "B" batteries than you should, and you can have no idea how good a "B" battery can be.

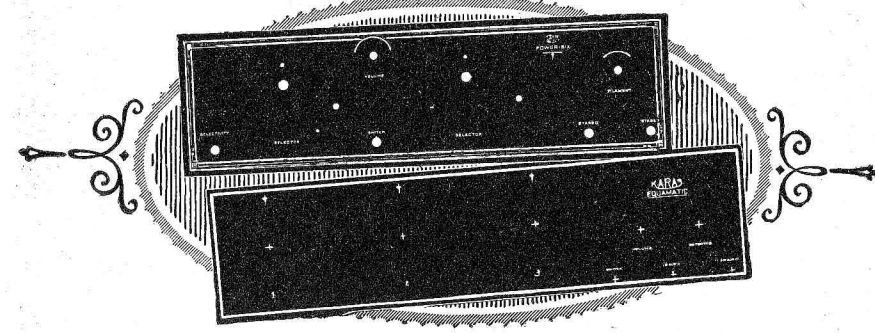
Just remember this about "B" batteries—Heavy-Duty batteries are more economical than the smaller Light-Duty batteries on all loud-speaker sets, and the patented exclusive Eveready Layerbilt No. 486 is the most economical of all.

Eveready Layerbilt's unequalled service is due to its unique construction. All other dry cell "B" batteries are made of cylindrical cells, with many soldered connections, and a great

Manufactured and guaranteed by  
**NATIONAL CARBON CO., Inc.**  
 New York San Francisco  
 Canadian National Carbon Co., Limited  
 Toronto, Ontario

Tuesday night is Eveready Hour Night—9 P. M., Eastern Standard Time, through the following stations:

WEAF—New York	WTAM—Cleveland
WJAR—Providence	WWJ—Detroit
WEEB—Boston	WGN—Chicago
WTAC—Worcester	WOC—Dayton
WFI—Philadelphia	WCCO—Minneapolis
WGR—Buffalo	WCCO—St. Paul
WCAB—Pittsburgh	KSD—St. Louis
WSAI—Cincinnati	WRC—Washington



**POWER SIX, KARAS, H. F. L.**

**ADDED** to the list of handsomely Veri Chromed Formica kit panels are now the Bremer Tully Power Six, Karas Equamatic front and sub panels, H. F. L. Nine in Line Superheterodyne with sub panel, Victoreen Universal single dial control. There are also Infradyne 7 x 28, and 7 x 30, Aerodyne, St. James 8 Tube, Bremer Tully Counterphase, Browning Drake National, Madison Moore Superheterodyne, Camfield Duoformer. They are sold by leading jobbers and dealers.

Special panels cut to size and Formica tubing are also available for Amateurs

**The FORMICA INSULATION COMPANY**  
 4667 SPRING GROVE AVENUE CINCINNATI, OHIO

Hear the FORMICA Orchestra Tuesday 9 to 10 over WLW



Formica has a Complete Service on Insulating Material for Radio Manufacturers

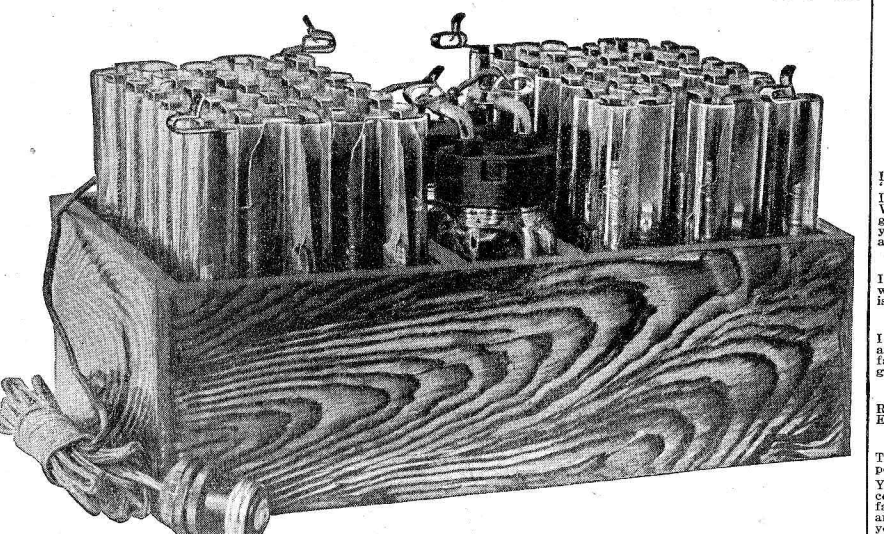
WBRR New York, N. Y. (416.4m-720kc) 8 p. m. program.
WBZ Springfield, Mass. (333.1m-900kc) 7 p. m. organ; 7:30, feature; 8:30, orchestra.
WCAE Pittsburgh, Pa. (461.3m-550kc) 6 p. m. dinner concert; 7:45, talks; 8, WEAF; 8:30, feature; 9, WEAF; 10, bridge; 10:30-1, orchestras.

WTAM Cleveland, Ohio (389.4m-770kc) 6:15 p. m. vaudeville; 8-11, WEAF; 11, Jade Room orchestra.
WTIC Hartford, Conn. (475.9m-630kc) 6 p. m. Hotel Heublin trio; 7, evening program; 10, orchestra.
WJJ Detroit, Mich. (352.7m-850kc) 6 p. m. dinner concert; 8, WEAF.

WSAI Cincinnati, Ohio (325.9m-920kc) 6 p. m. quintet; 7, quartet; 8, WEAF; 9-10:30, WEAF; 10:30, program; 11, dance orchestra.
WSB Atlanta, Ga. (428.3m-700kc) 8 p. m. headliner; 10:45, concert.
WSBC Chicago, Ill. (288.3m-1040kc) 6:30 p. m. dinner program; 7:15, travelog; 9-1, entertainers.

Table with 4 columns: Eastern, Central, Mountain, Pacific. Lists radio stations and their broadcast times.

90 Volt "B" Power Unit \$12.75



RUMOR has had it this NEW HAWLEY ADVANCED POWER UNIT was coming—and here it is. Hawley Storage "B" batteries have been standard for over 5 years and the same quality—the same standard of workmanship comprise this unit with its new ingenious hook-up and built-in charger, giving the utmost in B-Eliminator simplicity.

"B" ELIMINATOR



only \$7.95 \$1.00 Down Balance C.O.D.
READ this Proof! MONEY BACK ~ if Not Delighted

Trickle Charger, \$3.95 Charges "A" or "B" batteries using ordinary house current. Hooked to your "A" battery gives complete "A" power unit. Send \$1.00 with order. Pay \$2.95, plus few cents postage, to postman when he delivers your charger. C. O. D. Use for ten days. If not more than satisfied, return it and get your money back.

WEDNESDAY, JANUARY 12

Table with 4 columns: Eastern, Central, Mountain, Pacific. Lists radio stations and their broadcast times for Wednesday, January 12.

WEDNESDAY, JANUARY 5

Table with 4 columns: Eastern, Central, Mountain, Pacific. Lists radio stations and their broadcast times for Wednesday, January 5.

Educational Features Wednesday

Table with 4 columns: Eastern, Central, Mountain, Pacific. Lists educational features for Wednesday.

THE ROLL-O RADIO CO. Dept. R-7, 3rd & Sycamore Sts. CINCINNATI, OHIO

Send \$1 only with this Coupon The Roll-O Radio Co. Dept. R-7 3rd & Sycamore Sts. Cincinnati, Ohio





WMBB Chicago, Ill. (249.9m-1200kc) 7-8:30 p. m. Trianon duo; Bessie Beelman, contralto; Monte Blunn, tenor; 8:30-11, orchestra; artists.

KWSC Pullman, Wash. (348.6m-860kc) 7:30 p. m. Concert, talks.

Eastern 12 m. WBAP (475.9m-630kc) John Josey, organist. 12:15 11:15 10:15 9:15

Regular Thursday Features

Eastern Time Stations

CFCA Toronto, Can. (356.9m-840kc) 8:15 p. m. musical program, Luigi Romanelli and his orchestra.

THURSDAY, JANUARY 6

Headliners

Eastern 6:25 p. m. WTIC (475.9m-630kc) Cliftonian concert. 7:30 6:30 5:30 4:30

THURSDAY, JANUARY 13

Headliners

Eastern 8 p. m. WTAM (389.4m-770kc) Cleveland symphony. 8:30 7:30 6:30 5:30

Educational Features

Thursday

Eastern 7 p. m. KVOO (374.8m-800kc) U. of Tulsa. 7:30 6:30 5:30 4:30

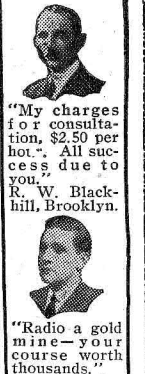
Mountain Time Stations KOA Denver, Colo. (322.4m-930kc) 8 p. m. Scheuerman's Colorado orchestra; 8:15, studio program.

Here's Work That is Almost ROMANCE!

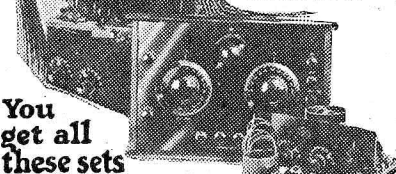


Many EARN \$50. to \$250. a Week in RADIO

Get into the great new BIG-Pay Industry—Radio. If you're earning a penny less than \$50 a week, clip coupon now. Send for AMAZING FREE Book.



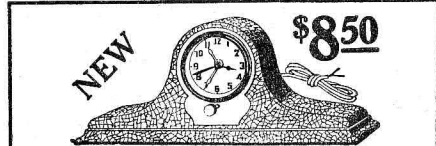
Get This Free Book! Send coupon below for FREE BOOK—'Rich Rewards in Radio'.



You get all these sets Receiving sets, from the simplest kind to thousand mile receiver, included to help you learn.

MAIL COUPON

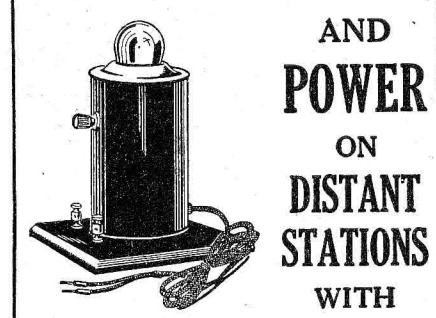
Form for mailing a coupon to the National Radio Institute, Dept. A-96, Washington, D. C.



Time-Lite The Radio Control Clock Starts and stops your set automatically. Shuts off set when you forget it—saves tubes and batteries.

Mail Coupon Today Time-Lite Clock Corp., Desk D. 182 Lafayette St., New York City.

VOLUME AND POWER ON DISTANT STATIONS WITH POWERFIER



Double Volume guaranteed. Powerfier makes the weak distant stations come in like locals, with absolutely no distortion.

Thank-You for Your Program Heard About 8:30 P.M. on Nov. 1, 1926. Remarks: Program Clear Enjoyed the quartette We would appreciate hearing Roses of Picardy or Humoresque.

Applause Cards 1/2 Price and FREE LOG Extra Your Name & Address on each Card FREE

TO INTRODUCE these individual applause cards we cut our regular price right in two on first order for limited time only.

30 Days Free Trial

Yes Sir! You can put a new 1927 Westingale Radio in your home and use it to your heart's content on 30 Days' Trial.

2-Dial, 5 tubes \$47.00 1-Dial, 5 tubes \$57.00 Westingale Electric Co. Department 132 1751 Belmont Av., Chicago, Ill.



WSOE Milwaukee, Wis. (245.8m-1220kc) 6 p. m. children's hour; 7, popular music; 9, bridge; 9:30, community band.

WSWS Chicago, Ill. (275.8m-1090kc) 6 p. m. dinner program; Terrace Garden orchestra; 8, production, the Magic Crystal; 10, popular airs; 12, Witching hour program.

Pacific Time Stations

KFI Los Angeles, Calif. (467m-642kc) 7-8 p. m. program by students of U. S. C.; 8-9, KFI drama hour; 9-10, varied hour; 10-11, Johnston and Farrell's music box review.

KFWB Hollywood, Calif. (252m-1190kc) 6-7 p. m. Pontiac dinner hour; 7:50, news; 9-10, program; 10-11, Warner Brothers frolic.

KGO Oakland, Calif. (361.2m-830kc) 6-6:55 p. m. Stanislas Bem's Little symphony; 8, program; 9-12, orchestra.

KCW Portland, Ore. (491.5m-610kc) 6-7 p. m. dinner concert; 7:45-8, lecture; 8:10, vaudeville.

KHJ Los Angeles, Calif. (405.2m-740kc) 6:30-7:30 p. m. children's hour; 8-10, features; 10-11, dance music.

KMTR Hollywood, Calif. (370.2m-810kc) 8-9 p. m. program; 9-10, semi-classical hour; 10-11, dance music; 11-12, Palais de Danse.

KJNK Hollywood, Calif. (336.9m-890kc) 7 p. m. organ; 8, feature; 9, courtesy program; 11, Hotel Ambassador.

KPO San Francisco, Calif. (428.3m-700kc) 6:30-7 p. m. States Restaurant orchestra; 7-7:30, Rudy Seiger's Fairmont hotel concert orchestra; 8-9, program; 9-10, music; 10-11, music.

KPSN Pasadena, Calif. (315.6m-950kc) 8-9 p. m. musical program.

Thursday, silent night for: CFCA, KFAB, KFDM, KFH, KFOA, KFUO, KFX, KMA, KMOX, KOA, KOB, KSWC, PWS, WAHG, WAMD, WCOA, WEO, WEBJ, WEMC, WGBF, WHAD, WJAX, WMAK, WOS, WSM, WSUI, WTAM.

FRIDAY, JANUARY 7 Headliners

Table with columns for Eastern, Central, Mountain, Pacific time zones and program details for Friday, Jan 7.

Table with columns for Eastern, Central, Mountain, Pacific time zones and program details for Friday, Jan 14.

FRIDAY, JANUARY 14 Headliners

Table with columns for Eastern, Central, Mountain, Pacific time zones and program details for Friday, Jan 14.

Educational Features Friday

Table with columns for Eastern, Central, Mountain, Pacific time zones and educational program details for Friday.

Regular Friday Features Eastern Time Stations

Table listing regular Friday features for Eastern Time Stations.

sketch; 9:30-10, string quartet; 10-11, novelty program; 11-12, Dance orchestra.

WBZ Springfield, Mass. (333.1m-900kc) 6:15 p. m. ensemble; 6:30, orchestra; 7:03, concert; 8, program; 8:30, program; 10, musicale.

WBBR New York, N. Y. (416.4m-720kc) 8 p. m. Watchtower concert trio; 8:20, Fred Twarosch, tenor.

WCAE Pittsburgh, Pa. (461.3m-650kc) 6 p. m. dinner music; 8, Sunday school lesson; 8:30, Burt McMurtree's hour; 9:30-10:30, WEAF; 10:30, dance music.

WCAU Philadelphia, Pa. (277.6m-1080kc) 7:30 p. m. Snellenburg recital; 8, Barry O'Moore, Irish tenor; 8:30, Cohen's Jewels; 8:45, Curlax Girls; 9, Melody Makers; 9:30, Murmuring Baritone; 10, recital; 10:30, Myers, Musical Architects.

WCX Detroit, Mich. (516.9m-580kc) 6-7 p. m. dinner concert, Goldkette ensemble; 8-9, studio program.

WDBO Winter Park, Fla. (239.9m-1250kc) 9 p. m. popular program.

WEAF New York, N. Y. (491.5m-610kc) 6 p. m. dinner music; 7, orchestra; 7:30, headliners; 7:45, talk; 8, Happiness Candy Boys; 8:30, Holmer hour, WGR, WLIT, WRC, WLJB, WWJ, WTAM, WCAE; 9, South Sea Islanders, WLIT, WWJ, KSD, WTAG; 9:30, La France orchestra, WEEL, WGR, WDAF, WLIT, WCAE, WTAM, WWJ, KSD, WOC; 10, Whittall Anglo-Persians, WRC, WJAR, WTAM, KSD, WWJ, WCO, WDAF, WGR, WGN, WEEL, WTAG, WCAE, WOC, WLIT; 11:30 (headliner), orchestra.

WEI Boston, Mass. (348.6m-860kc) 7:30 p. m. Whiting Milk company; 8, musicale; 9:30-10:30, WEAF.

WFL Philadelphia, Pa. (394.5m-760kc) 6:45 p. m. Adelpheia dance orchestra.

WGNS New York, N. Y. (315.6m-950kc) 6:30 p. m. orchestra; 7:15, music.

WGHB Clearwater, Fla. (265.3m-1130kc) 7 p. m. dinner music; 8:30, pipe organ, program; 10:30, dance program.

WGHP, Detroit, Mich. (270.1m-1110kc) 6-8 p. m. dinner concert, Hotel Tuller; 10-11, WGHP entertainers; 11-12, Melodymakers.

WGR Buffalo, N. Y. (319m-940kc) 7:15 p. m. evening program; 9:30-10:30, WEAF; 11-1, supper music.

WGY Schenectady, N. Y. (379.5m-790kc) 7 p. m. Hotel Van Curler dinner music; 7:35, staff program; 8, musicale; 9, WGY players; 10, WJZ; 11, WJZ.

WHK Cleveland, Ohio (272.6m-1100kc) 6 p. m. orchestra; 7:30, Whozit; 7:40, novelties; 8, vocal hour; 9:10, popular; 10-11, orchestra.

WHN New York, N. Y. (361.2m-830kc) 7:30 p. m. Sachs Quality entertainers; 8, Treasureland Home

Owners ensemble; 10, vaudeville; 10:30, orchestra; 12, Silver Slipper orchestra.

WICC Bridgeport, Conn. (232.4m-1290kc) 7 p. m. orchestra; 7:30, hour of music; 8:30, sextet; 10, orchestra.

WIP Philadelphia, Pa. (506.2m-590km) 6:10 p. m. Benjamin Franklin concert orchestra; 7-7, Uncle Wip's bedtime stories.

WJAX Jacksonville, Fla. (336.9m-890kc) 7-7:30 p. m. Carling hotel dinner music; 8-9, studio popular program; 9-10, Casa de Baile.

WJR Detroit, Mich. (516.9m-580kc) 7 p. m. symphony; 8, Arctic flavors; 8:30, studio program.

WJZ New York City, N. Y. (454.3m-660kc) 7 p. m. Santa Clause; 7:30, Hotel Commodore dinner orchestra; 8, Sundial Shoe Serendares & Bonnie Laddies; 9, Breyer Ice Cream hour, WRC will also broadcast; 10, Baldwin piano hour, WGY; 11, Paul Specht's Twin Oaks orchestra.

WLIT Philadelphia, Pa. (394.5m-760kc) 8 p. m. concert orchestra; 8:30 Salon orchestra; 9, WEAF; 10, WEAF; 10:30, Arcadia cafe dance orchestra.

WMAK Buffalo, N. Y. (265.5m-1130kc) 7:30 p. m. weather; 7:30, WGY; 7:35, WGY.

WMCA New York, N. Y. (340.7m-880kc) 6:30 p. m. Ernie Golden and his Hotel McAlpin orchestra; 12, McAlpin entertainers.

WNYC New York, N. Y. (526m-570kc) 6 p. m. piano selections.

WOO Philadelphia, Pa. (508.2m-590kc) 11 a. m. organ recital; 12:02 p. m. Tea Room orchestra; 4:45, organ recital; 7:30, Hotel Sylvania dance orchestra; 8:10, hygiene talk; 8:20, WOO tourists, WOO orchestra; 9:30, Fox theater orchestra; 10, vaudeville; 10:30, Sylvania dance orchestra.

WOR Newark, N. J. (405.2m-740kc) 6:15 p. m. Bill Wathey in sports; 6:30, Hotel Bretton Hall string quartet; 7:30, orchestra; 8:30, organ.

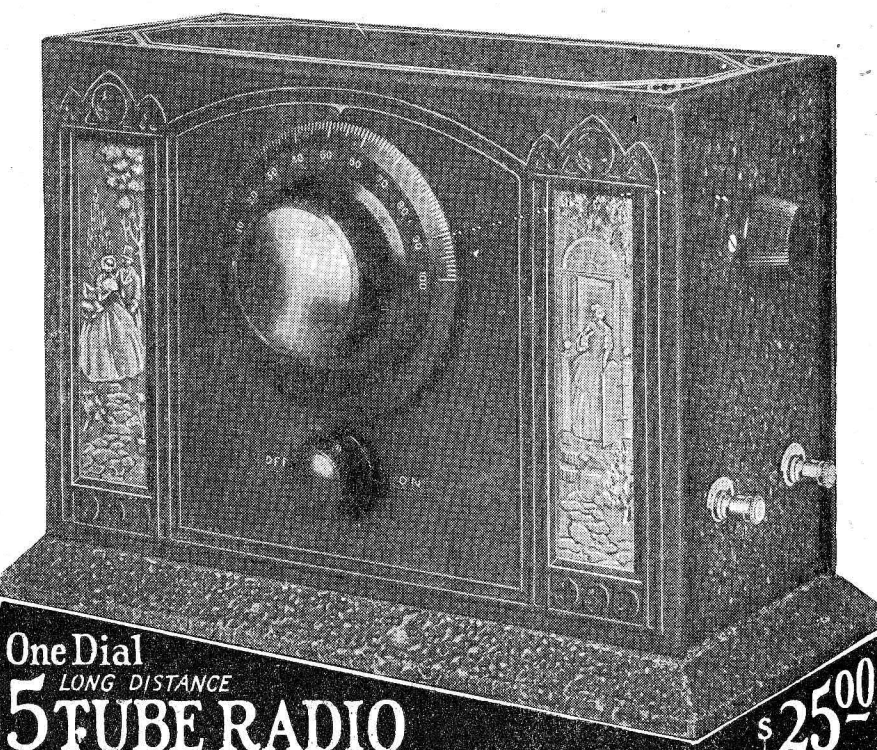
WFC Atlantic City, N. J. (299.5m-1000kc) 7:15 p. m. organ recital, Arthur Brook; 7:30, Hotel Shelburne dinner music; 8, orchestra; 9, Hotel Chelsea evening concert; 9:30, Hotel Ambassador concert orchestra; 10, Garden Pier dance orchestra; Silver Slipper.

WRC Washington, D. C. (468.5m-640kc) 7 p. m. Meyer Goldman's Hotel Hamilton orchestra; 8, musicale; 8:30, WEAF; 9, WJZ; 10, WEAF.

WRVA Richmond, Va. (258.3m-1170kc) 7 p. m. evening program.

WTAG Worcester, Mass. (545.1m-550kc) 8:30 p. m. program; 9:30 Belco entertainers; 10, WEAF.

WTAM Cleveland, Ohio (389.4m-770kc) 6 p. m. Emerson Gill's orchestra; 7, talk, Arthur Haas; 7:30, studio program; 9:30, WEAF; 10, WEAF; 10:30, studio program; 11, Jade Room orchestra.



One Dial LONG DISTANCE 5 TUBE RADIO \$25.00

EVERYBODY, including experienced radio engineers, said—it cannot be done. But we did it—produced a high grade, long distance single dial control radio to operate a loud speaker to retail for—\$25.00 and yet allow liberal discount to agents.

counties. We have the liveliest radio selling plan of today—instruments of all prices—a radio price to fit every pocket book. Any man who will follow our teaching cannot help but add big money to his present income and start to do it immediately. If you want more money here is your chance, but you'll have to act quick—others will jump at this chance.

This marvelous instrument is the result of five years' hard work by an organization of trained radio engineers. It is no experiment—thousands are in use—the results speak for themselves.

Sell Radio in Your Spare Time—Evenings You don't even have to give up your present position. The only time radio can be sold is in the evening—by demonstration. So here is a chance to add to your present income. During the past five years we have trained 4,364 men in this very profitable business.

There Will Be a Radio in Every Home Thousands have been waiting for just such a radio—a real long distance, powerful instrument—but at a price they can afford. It is here, and live, wide-awake salesmen will recognize their opportunity immediately—they won't lose a single minute writing for full information.

You'll be the first one with a real low priced long distance radio—your price will startle everybody—the results will be even far more startling. Once you demonstrate you're sure of a sale. No one can think of investing \$75.00 to \$100.00 in a radio when this instrument will equal the results and your retail price is only \$25.00. Just think of the advantage you have. Sell a radio for only \$25.00, and yet make a handsome commission.

Just as there are 100 Fords to one high-priced car, just so will there be 100 Vikings to every \$75.00 and \$100.00 radio—think what this means to men who get in on the ground floor right now.

Territory Is Going Fast—Better Write Today Someone is going to get the big profit on the sale of these instruments in your community—is that someone going to be you? Write today for our 100 page book which fully describes not only this wonderful instrument but also a full line of radio at all prices. It's FREE for the asking.

A \$25 Radio Which Will Equal a \$75 Radio Put a Model 599 Viking, which retails for \$25.00, alongside any radio retailing for \$75.00 and even more. Compare them for ease of tuning—only one dial to tune on the Viking—distance received, volume and tone. The results will make any man say, "I'll save that \$50.00."

Agents Wanted Make \$100.00 a Week You Should Make \$100.00 a Week Easily You can't help it—many will make more. Some will control a county—others will control many

Radio is today the biggest and quickest selling line—thousands are being sold—salesmen have made unheard-of profits. But here is a far greater, a far more interesting radio proposition than anyone ever dreamed of.

Agents Wanted Make \$100.00 a Week You Should Make \$100.00 a Week Easily

You can't help it—many will make more. Some will control a county—others will control many

Use This Coupon

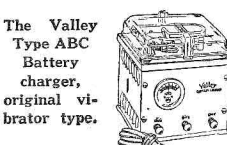
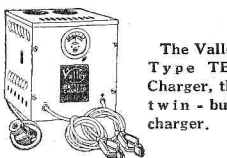
C. Y. Fischer, 122 W. Austin Ave., Chicago, Ill. I am interested in selling your 5 tube set in this territory. Please send me your 100 page radio book, FREE. Name, Address, City, County, State.

Valley B Power Unit



Uses only the RAYTHEON TUBE "For reliable reception"

Delivers 50 milliamperes at 180 volts Operates without hum or noise—Better than dry batteries



The Valley B Power Unit takes the place of B batteries by providing plate voltage from the house lighting circuit for any radio receiving set of 12 tubes or less. It will supply the plate voltage necessary for a power unit or power tube.

We use the Raytheon Tube in the Valley B Power Unit because only the Raytheon Tube gives full wave rectification and has no filament to burn out. Also, it is the only rectifying tube for this service which will deliver full current and voltage continuously over a long period of time.

Mounted in handsome black grained metal case. Comes complete with Raytheon Tube, cord and plug.

RADIO DIVISION, VALLEY ELECTRIC CO., St. Louis, Mo. District Offices: Boston, Chicago, Cleveland, Indianapolis, Kansas City, Minneapolis, New York, Philadelphia, San Francisco.

WTIC Hartford, Conn. (475.9m-630kc) 6:30 p. m. Hotel Bond trio; 7:15, Laura C. Gaudet, organist; 10:05, Emil Heimberger's Hotel Bond orchestra.

WWJ Detroit, Mich. (352.7m-820kc) 6 p. m. dinner concert; 9, WEAJ; 9:30, WEAJ; 10, WEAJ.

Central Time Stations

KFAB Lincoln, Nebr. (340.7m-880kc) 8:30-10:30 p. m. entertainment. KFDM Beaumont, Texas (315.6m-950kc) band. KMA Shenandoah, Iowa (461.3m-650kc) 9-11 p. m. Dreamers.

WHB Kansas City, Mo. (365.6m-820kc) 7-8 p. m. Sweeney orchestra; Songsters. WHO Des Moines, Ia. (526m-570kc) 7:30-8 p. m. program; 8-9, Headliner; 11-12, dance program.

Pacific Time Stations KFI Los Angeles, Calif. (467m-642kc) 7-8 p. m. popular program; 8-9, Aeolian organ recital; 9-10, semi-classical hour; 10-11, Packard ballad hour.

World Storage Batteries advertisement featuring an image of a battery and text: 'Silent B Power with World Radio Storage "B" Battery. Lasts Indefinitely—Pays for Itself.'

Potter Condensers advertisement with an image of a condenser and text: 'Potter Condensers Build the Best—Socket Power Devices, Power Amplifiers, Impedance Amplifiers.'

PROVES SETS FAULTY (Continued from page 3) series with the grounded or minus filament side of the loop. Try it. "Almost any set on the market today, if installed strictly in accordance with the manufacturer's instructions, will have no difficulty in separating local stations forty, yes twenty, kilocycles apart in frequency."

DANGER! advertisement featuring an illustration of a man falling from a roof and text: 'Why risk life and limb erecting an outside aerial? Play safe by using Effarsee Antennae.'

Large advertisement for Dor-Ann "B" Battery Eliminator with the headline 'Laugh This One Off—' and 'For \$8.95 Complete'. Includes an image of the product and detailed text about its features and a money-back guarantee.

Large advertisement for Genuine RAYTHEON "B" Battery Eliminator. Features an image of the device and text: '\$50 Value—Our Price Only \$22.95'. Includes details about its capacity, value, and a list of participating radio stations.

**"GOODY GOODY GIRL"**

(Continued from Page 8)

there preaching to me, have drunk of the liquor that I've run into this town."  
"I have, but I shan't again. In every glass I'd see a picture of men dead beside a road, bullets in their bodies; other men trying to staunch their wounds."  
"I see," said Jermin gently. "Then, it's no use—"

"NONE. This must be goodbye. I've had a fling at the sort of life that you and Mr. Becker and Mrs. Gayton and all your crowd lead. It isn't my kind. You've heard me speak of the goldfish that drove me from home. That's what it seems to me all of you are—goldfish. Swimming around and around in a glass bowl of your own and content never to get anywhere—but I mustn't preach again. Goodbye, Mr. Jermin. You needn't think of me again or be afraid that I'll talk; about last night, I mean. That is water over the dam."

Victor Jermin held out his hand. "The ten dollars I owe you," he said. "Goodbye, Miss Sylvester." He bowed and held open the door for her to pass through.  
Further and harder renunciation awaited her at Mrs. Trickett's rooming house. Before it stood Mildred Gayton's limousine; in the shabby little parlor, Mrs. Gayton herself.

"My dear, my dear," she cried. "When I went to your room . . . to go on my knees to you . . . beg forgiveness . . . oh, I've had a terrible night . . . Suzette took pity on me at last . . . told me where you were—"

"I'm sorry," said Lois. "Not that Suzette told you, but that you have been distressed, and I'm glad that our parting last night was not final—that we have this chance to say goodbye, that I can thank you for—"

"My dear! You're not putting me out of your life?"  
"Absolutely! It's not you but what you stand for, Mrs. Gayton—"

"Mrs. Becker, if you please."  
"Mrs. Becker?"

"NEIL married me this morning, just as soon as a license could be obtained. Oh, Lois! I'm married, respectable, no longer a—a—kept woman. I'm so happy. He's promised so often we would be, then evaded. What happened last night—I'm so sorry you had to go through it—gave me the club I needed.

Neil was repentant, remorseful. He really loves me, I think. It really was no trick at all—oh, you've repaid me a thousandfold—"

Lois bent suddenly and kissed her. "I'm glad. I wish you all the happiness in the world, Mildred."

"So we can go on being friends, continue with our plans," Mrs. Becker said. "I know you won't come back with me, but I've brought your clothes and Neil sent a check for that sixteen hundred—"

She broke off and her eyes widened as Lois resolutely shook her head. "Don't tempt me, Mildred. It can't be. When you leave here we're through with each other. I'm on my own. I've got to fight my battles alone. I want to. Don't try to weaken me. I must be strong—"

"But, my dear, what are you going to do? You're only a little country girl. The city is harsh, cruel. Do you recall what I said that first day you reached Chicago—that it had another side which I hoped you never would see. Let me help you escape that."

"No. If I must see it, I must. I can face it. I can beat it, too. There's success of some kind, somewhere, ahead of me."

THE other woman sighed. "I have an idea you'd never change your mind," she said resignedly. "I won't try to

**Tune by Wave Lengths**

Bring in Stations You Never Got Before

**RADEX TUNING CHARTS**

Show wave length you are tuned to. Tell where to set dials for every station. Identify programs received without announcement.

Contain Broadcasting Map and Distance Table

The only Complete list of stations published For Any Set and Any Dial

Midwinter Edition Now Ready

Postpaid 25c; send coin or U. S. stamps

"I have seen a great many logs but RADEX is the handiest I have seen anywhere."

D. O. Millison, 810 Warren Ave., Topeka, Kans.

THE RADEX PRESS

P. O. Box 143-LB Cleveland, Ohio

—as usual—

**CARTER**

Rheostats—Switches

Jacks

are specified in

**Bruno-Regenatrol**

and other leading circuits, because of preferred: Design and Quality

In Canada—Carter Radio Co., Limited, Toronto



change it. Do you know, in a way I'm glad. You're proving I was right in my estimate of you and while my heart is sad that you won't let me help you and because I dread for you what lies ahead—anyhow, I'll be pulling for you. Pulling and, now that I'm—clean—again myself, I think I can even do a little praying, too. If ever the tide gets too strong, you feel yourself weakening—come to me."

"Thanks," said Lois; but knew that even if she felt herself sinking she never would do it.  
"Well, here's your check."  
Lois took the slip of paper, hesitated only the barest fraction of a minute, then slowly tore it to pieces.

Mrs. Becker stared at her aghast. "Why our earth—" she began. "That's yours . . . you won't it—"

"No," said Lois, "I didn't win it. I was watching Mr. Becker when he went to put it up. He didn't bet my ten dollars. He didn't go near the cashiers' windows. He thought that I was sure to lose. The six-

**Again Specified**

5 AMPERITES  
BRUNO REGENATROL Receiver

Radiall Company  
Dept. R.D.-8, 50 Franklin Street, New York City

At All Dealers



**AMPERITE**

The "SELF-ADJUSTING" Rheostat



**DURHAM**

Not Affected by Atmospheric Changes

Durham Resistors are Metallized and specially insulated, thus insuring permanence of resistance under all operating conditions. Maintain their resistance-standard because impervious to atmospheric influences. 500 ohms to 10 megohms. Get the new Durham Mounting—upright, saves space.

INTERNATIONAL RESISTANCE COMPANY  
Philadelphia, Pa.



**DURHAM METALLIZED RESISTORS**

teen hundred is out of his own pocket. Yesterday I would have taken it on the grounds that he ought to lose for not putting up my bet. Today—I'm seeing things in a different light. I'll take the original ten if you want to give it to me, but the rest—"

"Well, you are a little goody-goody girl," said Mrs. Becker.

And at this critical period Raymond Lancaster seeks out the little Goody Goody girl—what can she do? What will she do? Which is the right path to choose? How can she live and be herself? It is a thrilling climax and you are promised a real surprise in the next issue of Radio Digest.



**Success with Bruno Regenatrol demands use of the specified Samson Transformers and Chokes**

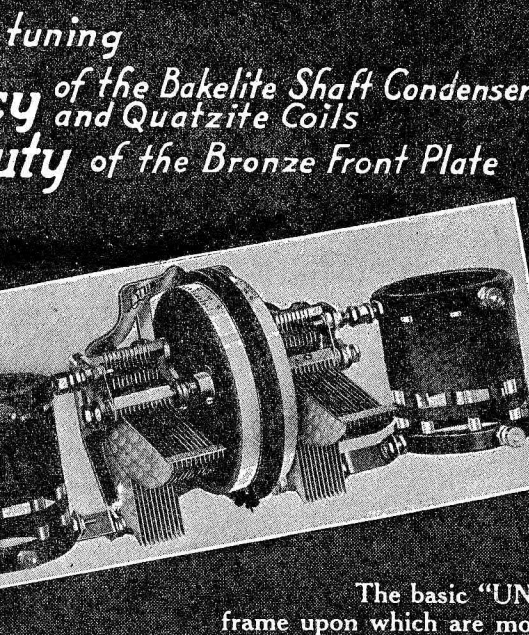
The pleasure you get from your set largely results from its tone quality. This depends principally on two things—keeping all radio frequency currents in their own circuits, a job only Samson R.F. Chokes can perform because of their patented helical winding, and amplifying impartially all notes. Only the Patented Helical Winding of Samson Audio Frequency Transformers equally amplifies all notes through nullification of distributed capacitance effects.

Price, Choke No. 85, \$1.50  
Transformers, all ratios, \$5.00

**Samson Electric Co.**  
Main Office MEMBER Sales offices in  
Canton, Mass. RMA all large cities

Again **ELECTRAD**  
Parts are Mentioned  
Use **ELECTRAD**  
Certified  
Mica Condensers  
**ELECTRAD**

**THE Simplicity of tuning**  
**THE Efficiency of the Bakelite Shaft Condensers**  
**and the Beauty of the Bronze Front Plate**



Makes the "UNITUNE" the most desirable tuning device ever designed.

**ALL BRUNO "UNITUNES"** may be mounted on a panel with only two screws.

The basic "UNITUNE" consists of a frame upon which are mounted two condensers operated independently by two bakelite drums projecting thru a beautiful bronze plate. It may be obtained in all standard capacities. Completely assembled it lists at \$11.00.

Other "UNITUNES" assembled with one or more Quartzite Coils for all popular circuits range from \$12.00 to \$21.00.

Booklet of Instruction and Blue Prints—25c  
**BRUNO RADIO CORP., LONG ISLAND CITY, N. Y.**

**The House of All Popular Kits**

**"Bruno" Regenatrol Receiver**

As Described in This Issue by Joseph Calcaterra

Complete Kit of Parts **\$60.00**  
Ready to Wire With **\$60.00**  
Instructions . . . . .

All Regenerative Kits Licensed Under Armstrong Patent 1,113,149  
Manufactured by Clapp Eastham Co. Exclusively for the Bruno Radio Corp.

**EVERY KIT INCLUDES FULL INSTRUCTION SHEETS FOR WIRING**

**NEW IMPROVED DIAMOND OF THE AIR**  
5 Tube. Complete Parts, **\$37.50**

**Complete Parts**

Four-Tube Diamond of the Air	\$30.00
Bernard 6-Tube Receiver	40.00
L C 27 Intermediate Power Pack	47.50
Hammarlund-Roberts Hi Q	63.05
Daven Bass Note Receiver	65.00
Cockaday's Power Pack	65.15
Improved Browning Drake Receiver	65.90
Henry Lyford Receiver	69.50
New Samson Dual Receiver	71.35
L C 27 Broadcast Receiver	85.20
Karas Equamatic	88.70
Bremer Tully Power Six	79.35
Silver Marshall Shielded Six	95.00
Radio Broadcast "Lab" Circuit	73.55
New Remler Infradyne	109.50
and others, speakers, eliminators, batteries, etc.	

BRUNO adjustable Brackets, pair \$1.25  
BRUNO non-adjustable Brackets, pair 1.00

**Always in Stock**

Acme	Ce Co Tubes	Silver Marshall
Aero	Centralab	Samson
Bruno	Carter	Toke
Bodine	Electrad	and others

**Send for Catalog**  
**B. C. L. RADIO SERVICE CO., Inc.**  
221-D Fulton St. N. Y. City

### FIX SET FOR RESULTS

(Continued from page 9)

Batteries should be tested while in service or immediately after disconnecting from the receiver. The reason for this is that a B battery possesses a certain amount of recuperative power when idle, but the moment it is again placed in service it will drop back to its true value.

The "cut-off value" or voltmeter reading at which a B battery has served its useful life is approximately 75% of when brand new. Thus a B battery which when new indicated a voltage approximating 45 volts would be considered as having served its useful life when it had dropped in voltage close to 33 volts. B batteries require no servicing other than that they be kept clean and placed not close to radiators. This precaution should be taken because a dry B battery is in reality a "wet" battery inside but sealed. If placed close to any device radiating heat it is but natural to assume the moisture would soon be evaporated and the life shortened.

The function of a C battery has been shown as that of establishing "grid biasing." In design and construction it does not differ from that of a B battery, but is only supplied in voltages of 4½ or 7½ as maximum. Their life when connected in a Radio circuit cannot easily be determined. In such service they supply no current, hence their life represents the "shelf" life of the battery, which may be anywhere from one to two years or longer.

#### Eliminators; Vacuum Tubes

The present market affords several makes of both A and B battery substitutes or eliminators which, if offered by reputable manufacturers, may be depended upon to render very satisfactory service. To describe each of these substitutes in turn would hardly be of interest to my readers in an article of this general type.

Vacuum tubes for Radio usage have now reached a stage wherein no one can afford to experiment with those which are offered at bargain prices. Buy your tube requirements from a responsible dealer, the best will ever prove a wise investment. And don't "rejuvenate" them every week.

(To be Continued)

### The Reader's View

#### Bouquet for Shenandoah

The one station we lost, WJZ, we do not miss as the two that interfere, KMA and KFNF, come in good generally, and we feel that they are more suited to our district and our needs. With KOIL it is somewhat different, for while they are a good station, they interfere badly at times with WGN and KDKA.

I don't see why one station should be

### CLASSIFIED ADVERTISEMENTS

#### DOGS

Beautiful registered bull pups, \$15. Bull-dogs, 501 Rockwood, Dallas, Texas.

#### HELP WANTED

Earn \$25 weekly, spare time, writing for newspapers, magazines. Experience unnecessary. Details FREE. Press Syndicate, 1269, St. Louis, Mo.

#### PATENT ATTORNEYS

##### PATENT ATTORNEYS

PATENTS. Booklet free. Highest references. Best results. WATSON E. COLEMAN, Patent Lawyer, 724 Ninth St., N. W., Washington, D. C.

#### RADIO

**NEW RADIO WITHOUT BATTERIES.** Why waste several hundred dollars when you can get all the radio you want on a Lambert costing only \$2.95 postpaid. Big stations 600 miles away come in loud. Needs no tubes or batteries. 250,000 homes already have them. Order direct from this adv. Crystal Radio Company, Wichita, Kan.

Would like to communicate with anyone desiring to exchange Radio Stamps. Write B. Reuter, 1086 E. 31st St., Brooklyn, N. Y.

**Super-sensitive one-tube receiver.** 1,500 miles guaranteed. Price, \$18, tube included. Write James Marek, Oconto, Wis.

**Prove your reception by the most practical and convenient method:** Proof of Reception Cards. Contains spaces for complete reception record, dial settings and signature of announcer. Handy size, 3x5 inches. Send 25 cents for sample package. Radio, 2617 Hollywood Ave., Chicago.

Headphones and Loud speakers repaired. Sam T. Sherrill, Smithville, Texas.

given unlimited power to reach across the continent and down out some local station that has the needs and desires of the community at heart. We lost some distant stations but gained some more suited to our needs.—O. E. S., Monticello, Minn.

#### Agreeing with P. B. G.

I heartily agree with P. B. G. Iowa is the worst for wave jumpers. KOIL puts on fair programs but cannot compare with KDKA, WGN and KPRC. Here is a complete list of stations interfered with by the jumpers:

KOIL interferes with WGN, WLIB, KTAB, KDKA, KFDM, KPSN, WGR, WSMB.

WAAW interferes with CKY, WMBF, WTAM.

KSO and KMMJ interfere with WHT, WLIT, WFI, WOAI, WHAS and PWX.

KFNF and KMA interfere with WJZ, WQJ, KFI, WRC, WCAE, WAPI.

The Shenandoah stations are the worst of all—and usually selling something.

**INSIDE-AERIAL**  
 DISTANCE-SELECTIVE-NO-TA LOOP  
 FULL SIZE ANTENNA—150 FT. STRANDED COPPER WIRE  
 NOT AFFECTED BY WIND, RAIN, SNOW OR LIGHTNING  
 CERTIFICATE OF APPROVAL BY U.S. BUREAU OF RADIO LABORATORIES  
 PRICE \$5 POSTPAID OR \$2.50 AND 4 ADDRESSES SET OWNERS  
 Ask about our NOISE KILLER  
 INTER-STATE SIGNAL CO., Dept. 1, COLUMBUS, OHIO

Let Us Show You How to Get a Complete  
**4, 5 or 6 TUBE KIT FREE**  
 Send Postal For Particulars  
 B. C. L. RADIO SERVICE CO., Inc.  
 221-D Fulton St., N. Y. City

**Dial Setting Chart Free**  
 This remarkable new chart shows where to set dials for different stations. Find stations immediately. Tune in more clearly. It is included absolutely FREE with our new 64 page revisable Log and Radio Information Book—or De Luxe \$2 flexible cover (gold letters) edition at special introductory ½ price of only \$1. Loose leaf. We publish corrected sheets as changes in calls, wave lengths, owners, addresses, etc., occur, and as new data comes out. 488 stations, 4 dial settings, remarks, etc.  
 Tuning Suggestions. Station lists alphabetical by wave lengths—by states, cities, etc. Trouble aids. Dictionary radio terms. Repair hints. Diagram for ideal aerial. Care of batteries, etc. Other valuable information necessary to enjoy radio. Doubles radio pleasure. Just pay postman for log when it arrives. Chart included FREE. Postpaid if \$1 with order. Money refunded if not delighted. Order today—NOW while special offer lasts. A postal will do.  
 RADIO PRINTERS, Dept. 8411N, Marengo, Illinois

**RADIO LISTENER'S RED-BOOK**  
 enables you to definitely locate each station on your dials and to reduce the squeals and howls of "hit-or-miss" tuning. It is  
**A GUIDE TO BETTER RADIO RECEPTION**  
 Two-page, two-color broadcasting station map gives distance, direction and time divisions. Two-page "Radio Doctor" tells how you can determine and remedy the common troubles of radio sets, batteries, tubes, etc. Complete information regarding each station including new licenses and latest changes listed and cross-indexed three ways. If not sold by your radio or news dealer, copies mailed post-paid for 25c each, stamps or coin.  
**ANDREWS RADIO DIRECTORY AND LOG-BOOK**  
 Ft. Wayne, Ind., P.O. Box 158-E

**RADIO BOOK FREE**  
 Tells how you can make big money in world's newest and greatest field. Presents lifetime opportunity in Radio. Right now we want live agents and dealers in every locality. \$60 to \$100 a week easy.  
**40% to 60% Profit FREE** Simply send in a few lines explaining liberal profit proposition and how to get latest radio goods at wholesale. Also prices on parts, sets and accessories and amazing special offers—all free. Write today.  
**STANDARD RADIO CO.**  
 1438 Walnut St., Kansas City, Mo.

**Yale GROUND HOG**  
 The Perfect Ground  
**DOUBLES POWER AND DISTANCE**  
 Marvellous newly-invented ground gives 100% improved reception. Doubles power and distance. Stops leakage. Reduces static. Stops jangling even in midsummer. Results never before equalled, users say. Satisfaction guaranteed.  
 Proven absolutely essential to clear, powerful distance reception. Draws and holds moisture indefinitely. Highly sensitive to radio energy. **SEND NO MONEY**—To introduce, we offer to those who act at once, regular \$5.00 size for only \$2.00. Send name today and pay \$2.00 plus 17c postage on delivery. Or send only \$2.00 with order and save postage. **FREE**—Full description of Ground Hog and amazing special low priced battery offer on request—write today.  
**Yale Specialty Supply Co.**  
 123 W. 5th St., Kansas City, Mo.

I know how to operate my receiver, and it is a good one. I have had international reception (Cardiff, Wales, and Lima, Peru), prior to the wave jumping orgy, but it's all over now. There is no use in having a receiver unless you can get WJZ, KDKA and WGN. Such stations are truly worth while.—Mrs. C. V. N., Omaha, Nebr.

**NEW INFRADYNE KIT**  
 ALL GENUINE PARTS IN STOCK NOW!  
**FREE** WHOLESALE CATALOG  
 Listing thousands of new radio parts, kits, furniture, accessories and complete radio sets, at prices that save you money. Write for your copy now, it's free. Dept. 6.  
 THE HARCO CO., 1255 S. Wabash Ave., Chicago, Ill.

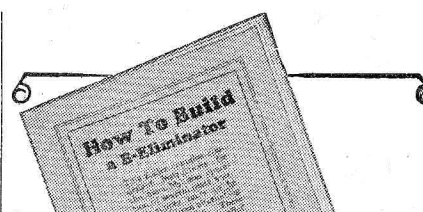
**American Radio Now—**  
**50% DISCOUNT ON RADIO!**  
**BIG NEW 1927 CATALOG-FREE**  
 Dealers, Agents, Set Builders—get our big 1927 Catalog—225 nationally advertised lines. Lowest prices in America! Largest, most complete stock. Radio's latest developments. It's FREE—send for your copy now.  
**AMERICAN AUTO & RADIO MFG. CO., Inc.**  
 1444-A McGee Street, Kansas City, Mo.

**Wheeler Super-Cone**  
**Only \$10 Guaranteed**  
 equal in tone and volume to cones selling at double the price or money back. Hear it at your dealer's. Insist on seeing guarantee tag.  
 Wheeler Mfg. Co., 254 W. 34th St., New York

**SEE JAY POWER UNIT**  
 Here to Stay  
 A combination alkaline element battery and trickle charger all in one. Price, shipped dry with solution, \$16.00. Tube extra, \$1.00. Tube extra with chemical charger, \$12.00. 140-volt, \$17.00.  
 Write for our illustrated 32-page booklet and Send No Money. Pay Expressman.  
**SEE JAY BATTERY COMPANY**  
 919 Brook Avenue New York City

**Famous Marwood Now sold on Easy Terms**  
**1 Dial 6 Tube \$43.85**  
**Get Agents Prices—Save 50%**  
 Great news! Now own a famous Marwood set the world's lowest price for real quality—and pay on easy terms. The only Radio sold direct on easy terms—proof that the Marwood MUST be a wonder. A year ahead with 4 big exclusive improvements—Super-Selectivity, Power-Tube Volume, New Easy-Tuning Principle, New Tone Quality. Save half—and get a Radio that can't be beat at ANY price. Panel etched in gold.  
**30 Days Free Trial**  
 We trust you. Prove the Marwood the best buy in America. Don't buy a Radio till you get our Easy Terms. 30 Days' Free Trial. Agent's Confidential Low Price. Free Radio plan, new Catalog. Agents—Write quick for territories.  
**MARWOOD RADIO CORPORATION**  
 1747-48 Morse Ave., Chicago, Ill.

**New Device Locates Any Radio Station**  
 Amazing Results Secured By Simple Invention of Kansas City Expert  
 An amazingly simple device that will enable you to determine instantly the proper dial setting to reach any broadcasting station has been perfected by a Kansas City radio expert. With it all you need is the wave length, given in all broadcasting programs, to tune in exactly on any station that you select.  
 This new device eliminates all logging, keeping bothersome charts or tables, and shows you how to locate many stations you have never found.  
 Simply send your name and address with one dollar to the Radio Specialty Co., 540 Dwight Bldg., Kansas City, Missouri, and this device will be sent you postpaid. If after using it for five days you are not convinced it is the greatest value ever offered, return it and your money will be refunded.

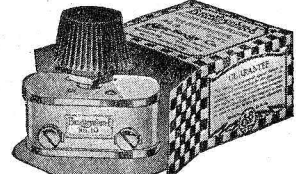


**SEND FOR THIS RADIO FOLDER**  
 Contains seven hookups for B-Eliminators published in a prominent radio magazine.



**When You Build a B-Eliminator**  
 Use Bradleyohm-E for Variable Resistors and Bradleyunit-A for Fixed Resistors  
 Always insist that Bradleyohm-E and Bradleyunit-A are included with your B-Eliminator kit, if you want to be assured of perfect voltage control. The leading manufacturers of B-Eliminators have long since adopted these Allen-Bradley variable and fixed resistors as standard equipment for their B-Eliminators.  
 Ask your dealer for Allen-Bradley Perfect Radio Devices, today.

### Bradleyohm-E

**PERFECT VARIABLE RESISTOR**  


For B-Eliminator service requiring wide voltage control, Bradleyohm-E is essential. It is an over-size Bradleyohm with sufficient capacity to handle all normal B-eliminator requirements. Be sure to ask for Bradleyohm-E in the checkered carton. Your dealer can get them for you.

### Bradleyunit-A

**PERFECT FIXED RESISTOR**  

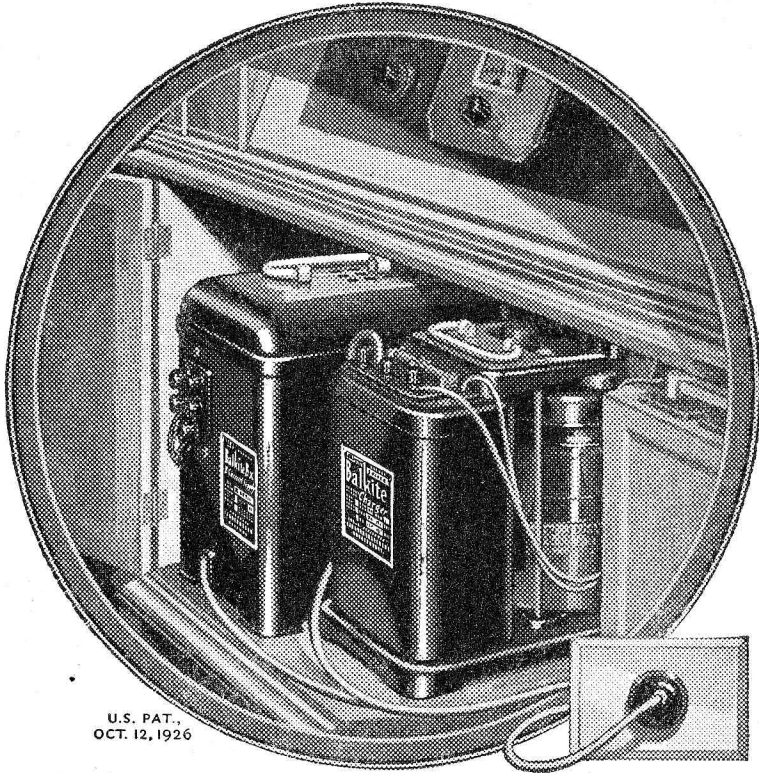

This solid, molded, fixed resistor has no glass or hermetic sealing in its construction. It is a solid unit with silver-plated end caps and is not affected by temperature, moisture and age. By all means, use Bradleyunit-A when you need a fixed resistor.

**MAIL THE COUPON TODAY**

Allen-Bradley Company  
 290 Greenfield Avenue  
 Milwaukee, Wisconsin

Please send me, FREE, your radio folder with seven B-Eliminator hook-ups.

Name.....  
 Address.....



U.S. PAT. OCT. 12, 1926

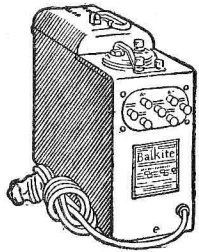
# Make your radio set a light socket receiver now

with Balkite "B" and the new Balkite Trickle and High-Rate Charger



### Balkite Trickle Charger \$10

With 6-volt "A" batteries can be left on continuous or trickle charge thus automatically keeping the battery at full power. With 4-volt batteries can be used as an intermittent charger. Or as a trickle charger if a resistance is added. Charging rate about .5 ampere. Over 300,000 in use. Price \$10. (West of Rockies \$10.50. In Canada \$15.)



### Balkite Combination

Once connected to your "A" battery, supplies automatic power to both "A" and "B" circuits. Controlled by the filament switch on your set. Entirely automatic in operation. Serves any set now using either 4 or 6-volt "A" batteries and requiring not more than 30 milliamperes at 135 volts of "B" current—practically all sets of up to 8 tubes. Price \$59.50.

All Balkite Radio Power Units operate from 110-120 volts AC current with models for both 60 and 50 cycles. The new Balkite Charger is also made in a special model for 25-40 cycles.

To enjoy the convenience of operating your radio set from the light socket add the new Balkite "B" and the new Balkite Charger.

Balkite "B"—the proved "B" power supply—eliminates "B" batteries entirely and supplies "B" current from the light socket. The new Balkite "B"-W serves any set of 5 tubes or less requiring 67 to 90 volts; Balkite "B"-X sets of up to 135 volts and 8 tubes [illustrated]; Balkite "B"-Y any standard set.

Most owners of even small sets will buy Balkite "B"-X which will take care of nearly any set you buy in the future.

The new Balkite Charger, with both high and low charging rates, is easily the greatest charger value in radio. It combines the advantages of both trickle and rapid charging. At the low rate, on trickle charge, it automatically keeps your "A" battery fully charged, and in effect converts it into a

light socket "A" power supply. Its high rate provides an ample reserve of power for the largest sets.

Both Balkite "B" and the Balkite Charger are entirely noiseless in operation. Both are permanent pieces of equipment, with no bulbs and nothing to wear out or replace. Other than a slight consumption of household current, their first cost is the last. Both are built to conform with the standards of the Underwriters' Laboratories.

**WALTER DAMROSCH**  
and the  
**NEW YORK SYMPHONY**  
on the air

Every other Saturday night a symphony concert. On alternate Saturdays one of Mr. Damrosch's famous piano recitals on the great Wagner Music Dramas. Over stations: WEA, WEEL, WGR, WFI, WCAE, WSAI, WTAM, WWJ, WGN, WCCO, KSD, WDAF, WOC.

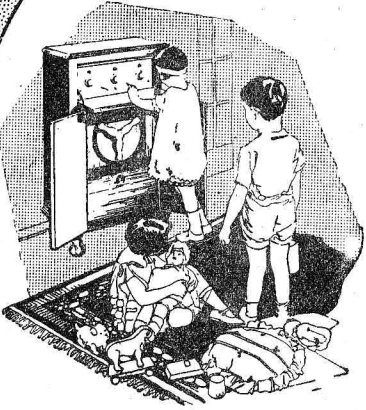
***Balkite Hour***  
SATURDAY EVENINGS  
9 P.M. Eastern (8 P.M. Central) Standard Time

The greater portion of the radio season, including the months in which reception is best, is still before you. Add these two Balkite Units to your receiver now. Then you too will know, not only for this year, but for years to come, the pleasure of owning a radio set always ready to operate at peak power. Ask your dealer. *Fansteel Products Company, Inc., North Chicago, Illinois.*

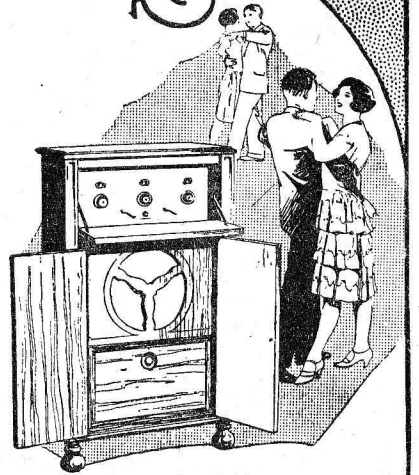
Balkite Charger \$19.50. (West of Rockies \$20. In Canada \$27.50.)  
Balkite "B"-W \$27.50, "B"-X \$42, "B"-Y \$69. (In Canada "B"-W \$39, "B"-X \$59.50, "B"-Y \$96.)

# FANSTEEL Balkite Radio Power Units

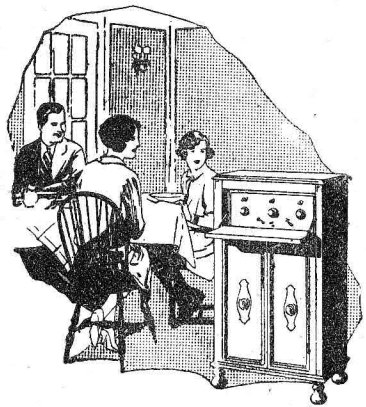
# New and Improved FRESHMAN MASTERPIECE



*Uses C-Battery  
and  
Power Tube*

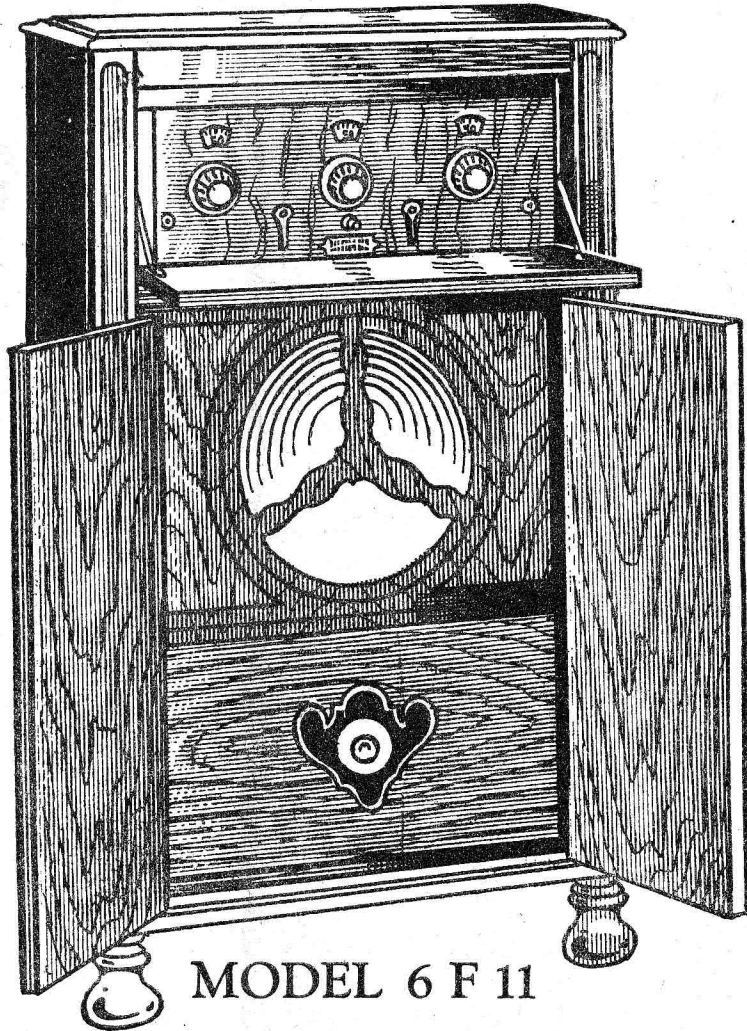


*Shielded all  
metal Front and  
Sub-panel*

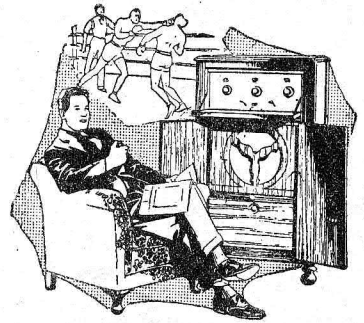


*Operates by Electricity  
if you prefer*

This new QUALITY set is so designed to operate from your light socket by installing the new Freshman "ABC" Power Supply.



MODEL 6 F 11



*Genuine R.C.A.  
Radiotrons*

are recommended for use with Freshman Masterpiece Receivers. A special package containing—1 UX 112 power tube, 1 UX 200A detector tube and 3 UX 201A amplifying tubes—matched and tested for the set in which they are shipped, is sold by Authorized Freshman Dealers.

# \$19<sup>50</sup>

## Makes Life More Pleasant

—it is massive—it is beautiful—an article of furniture you will be proud to own. This "masterpiece of masterpieces" surpasses all expectations—the most perfect radio ever designed.

—takes you on mysterious journeys; miles and miles—North, South, East and West; comfort and rest in your easy chair.

—the world's finest entertainment yours—opera, dance music, concerts, lectures, sports; just take your pick.

—easy to tune with its three distinct controls;—brings in the

stations wanted day after day at the same dial points—eliminates overlapping of wave lengths which assures distinct separation of one broadcasting station from all others.

—its tone quality makes it wonderful—the large cone-speaker has been designed to exactly match the new Freshman Receiver. This special cone-speaker easily handles the full power that the new set delivers.

—make life more pleasant—with a Freshman Masterpiece Radio.

Sold on Convenient Terms by Authorized Freshman Dealers

CHAS. FRESHMAN CO., Inc., FRESHMAN BLDG., NEW YORK  
2626 W. WASHINGTON BLVD., CHICAGO

# The World's Greatest Radio