

July 24th Event Celebrates Volunteers and Prepares For Growth in Museum Programs

The Spark Starts With You!

In order to accommodate the growing popularity of the Museum's public programs, AMRE is planning a volunteer party to plan and prepare for some major changes to the interior of the building, and to invite folks to take part in expanding the programs that make AMRE so unique.

The party will take place in the



Science Saturday instructors Kathryn De-Filippo and Scott Wenger pose with students after finishing an inspiring workshop held in our soon-to-be remodeled education loft, filled with hands-on work stations for discovering the wonders of electricity, magnetism, resonance and much more!. Visit our Website later this summer for more details.

Museum's performance space, on July 24th at 6 p.m.

"Never has the participation and support of our membership and volunteers counted more," says Frank Ordway. "This is a great opportunity for people to get involved in our growing programs and to help build a world class museum. We are becoming a powerhouse for science education, community radio and a prime spot for locals and tourists to come and visit. We've got the collection, we've got the radio station, we've got the education program, and we've got the building. With strong community support, we will build something really special."

AMRE resident educator and librarian, Carl Nemeth agrees. "It's our job to organize, catalog and present the collection, whether it's our books, music or scientific artifacts and radios, so visitors can experience them to the fullest."

"All we need is to finally develop the rest of this amazing space and let all these artifacts and programs breathe!" says founder and co-curator Jonathan Winter. "The event will be both a celebration and a chance to get people organized for the changes ahead. The future plans are to restore these last few portions of the building to create a science education center



KMRE manager Alena Feeney sits in what is soon to be the station's new home. Completing this studio is a top priority in the Museum's August remodeling project. Volunteers are needed to bring this studio and the Museum's immense collection of recorded sound to the world.

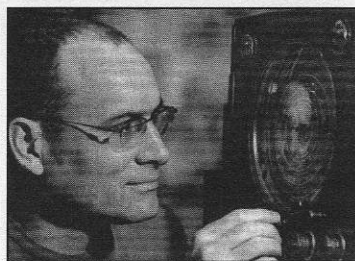
and new studio for the Museum's community radio station. In addition to the physical work, there are major efforts underway to digitize the Museum's massive media collection and to prepare parts of the collection for display.

Please RSVP at alena@amre.us or 360.738.3886. ✎

Inside this Issue~

- ✎ Executive Director P-2
- ✎ KMRE Update P-2
- ✎ Profile: Paula Weaver P-3
- ✎ Membership P-4

Edited by TJ Granack



Frank Ordway

Dear Members and Friends~

The noblest question in the world, according to Benjamin Franklin is "What good may I do in it?" The answer in reference for retiring long-time AMRE Board member Paul Tholfsen is, quite a lot.

Paul has been a member of the AMRE board since the organization was founded. He was instrumental in helping AMRE receive its 501(c)(3) status, acquire its broadcasting license or KMRE 102.3 and has served as the institution's treasurer, bookkeeper and memory bank. Besides his monumental impact here, Paul

KMRE Corner

Your Radio-Active Headquarters!

Hello AMRE Members~

Welcome to the first KMRE Corner. Here at KMRE-LP 102.3 FM we have been steadily growing and a big part of that is directly attributed to you. Because of your continued support the Museum has been able to create original programming, work with local community institutions and provide an outlet for volunteers to participate in broadcasting. In just six months we have updated our production studio, begun working with non-profit partners such as the Car Share Program, Whatcom Dispute Resolution Center and ReSources to create public service announcements that get their message out to our community. Our goal is to reach out to our local community and provide

Message from the Executive Director

has been the accountant for the Whatcom Community Foundation and a number of other organizations in Bellingham. Dr. Tholfsen worked as an engineer with RCA in Camden, NJ and has a keen interest in radio. He received his Ph.D. in Physics, and taught at Western Washington University for a number of years.

Paul's work here will never be forgotten and we look forward to continue working with Paul after his formal board tenure comes to an end.

The importance of volunteers at AMRE is incalculable, as it is at any non profit. Ben Franklin's question is a good one for all of us who want a better world. Paul Tholfsen's life-long commitment to serving his community is a model for us to follow and certainly would have pleased Mr. Franklin.

Warmest regards to you all. ✨



Chuckamut Radio Hour host Chuck Robinson, performer Bob Muzzy, and author Clyde Ford entertain a live audience in the Museum's performance space. This variety show is broadcast weekly and streamed on the Web.

exciting and thought-provoking programming from the Museum's mammoth collection, as well as showcase original and diverse talent right here in Bellingham. Fulfilling this vision will take time, resources, and LOTS of volunteer help. If you want to get involved in creating something special and with local community radio, please be sure to attend our volunteer orientation meeting on Tuesday, July 24th at 6pm. I'd love to meet you in person and say "Thank You" and get you set up in local radio broadcasting.

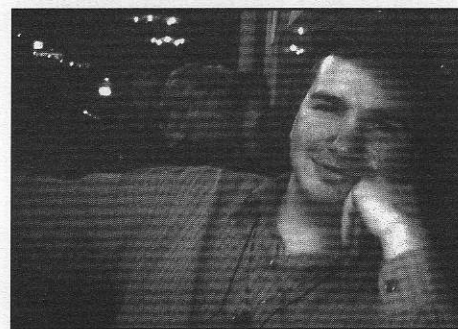
See you on the radio!

Alena Feeney,
KMRE Station Manager



The American Museum of Radio and Electricity, and KMRE, are proud to broadcast the Thomas Jefferson Hour®, a weekly conversation with America's third President, Thomas Jefferson, the founding father educated in Enlightenment ideals and considered by many to be the visionary of the founding of our nation. Jefferson is portrayed by humanities scholar, Clay S. Jenkinson. "The Thomas Jefferson Hour is exactly the kind of radio we want to bring to our community," remarks Jonathan Winter. "Clay is brilliant. I really enjoy his scholarship and good humor. We're honored to broadcast the show."

Mr. Jenkinson adopts the persona of Jefferson each week to comment on current events and answer questions you may have about Jefferson's thoughts on any and all topics. Clay has portrayed Thomas Jefferson for more than two decades. He is the recipient of the National Endowment for the Humanities highest award, then called the Charles Frankel Award, for his humanities-based first person interpretation. KMRE, 102.3 FM currently broadcasts the show every Sunday morning at 10 a.m. but will move the show to Saturday afternoons this fall. AMRE is proud to broadcast this thoughtful and entertaining radio series. Tune in this week—you'll be glad you did. ✨



Museum member and long-time volunteer Cody Bosch has gone to study art and life. His art is proudly displayed in the Museum. Warmest regards from everyone at 1312 Bay Street.

Great Vibrations AMRE Profile: Dr. Paula Weaver Director of Education



Dr. Paula Weaver and enlightened friend

“My father, Merrill Ellis, was one of the pioneers of electronic music,” says Paula Weaver, the Museum’s new Director of Education. “He was the weird composition department at the University of North Texas in the late 1960s and early 70s. An impressive pen and ink drawing of a thoughtful looking man with curly beard and curious eyes graces the body of a poster that hangs on the wall above Paula’s desk. It relates: *Merrill Ellis, St. Valentine’s Day 1975, Multi-Media E-II Moog Concert, University of North Texas*. Paula explains, “The E-II was a very early version of the Moog synthesizer created through collaboration between Robert Moog and my Dad.”

Paula remembers meeting Robert Moog. “Bob had a lot of kids in his family, too. Our family visited at his home in Ann Arbor, Michigan,” says Paula. At the time, Moog was developing this smaller, more portable machine for Paula’s father to take on tour. “My Dad composed pieces for the synthesizer, symphony and choirs—often combining dance and some sort of visual images in the overall production,” says Paula. “His intention was to incorporate all of the senses.”

Paula’s father also experimented with musical notation for electronic composition. “For example, the Theremin—like the one we have in the Museum—is a wobbly thing. It goes up and down and back and forth in tone, pitch and dynamic,” says Paula. “There was no way to write electronic music like that with a traditional discrete notation system, so he had to create a unique notation system for this new kind of electronic sound.”

Living around so many electronic gadgets and musical instruments made coming to the Museum an unusually familiar experience. “Once I saw what was going on here, I thought, what a terrific opportunity for Bellingham. One of the reasons I moved to this community was because of the richness of

the arts and learning culture here.”

Before moving to Bellingham earlier this year, Paula was an Assistant Professor of Early Childhood Education at the University of Texas at Arlington. “I taught at the University, but would take lengthy sabbaticals to work in the corporate training world setting-up training and certifications programs for corporations. I gravitated to high-tech and software companies because of their propensity to embrace technology. I wanted to know more about how people learn from something other than another human being. I was in on the very beginnings of what is now accepted distance learning practice.”

Paula’s passion for innovation led her to co-found the North Hill School in Irving, Texas. This model for charter schools across the nation was recently ranked the 13th best high school in the U.S. by Newsweek Magazine.

Paula sees similarity in the opportunities of starting a school to the opportunities around building a world-class museum education program. “My immediate challenge is time and resources,” says Paula. “We plan to remodel the physical space in the loft area where the science education classes are held. That space has great potential, but that old carpet has got to go! We’re also looking forward to finding a donor for appropriate tables, chairs and shelves for the Discovery Loft and Learning Center classrooms.”

Another opportunity Paula embraces is developing curriculum for the Museum’s science classes. “The current classes are great and often emphasize the hands-on experience we all know is so valuable,” says Paula. “Right now we’re putting pro-

cesses and curriculum in place to make the workshops sustainable. We need to expand our pool of instructors and train them to be effective inquiry-based facilitators,” says Paula. “In our own little scientific niche here at the Museum, we can certainly be a place to inspire learners to become innovators and inventors.”

The Museum’s unmatched collection and large, often undeveloped space makes Paula’s job both exciting and challenging. “I need to remain focused on efficient use of time,” says Paula. “The staff is small in number and mighty in spirit. That was apparent the day I interviewed for the position. With a limited staff, and such a large opportunity, we have to be very focused and able to prioritize.”

“I am a continuous learner,” says Paula. “I think we *all* are! Getting inspired to think and observe like a scientist is important. It will remind us that everything *isn’t* already invented. I’m not just talking about students, but teachers and community folks as well. We want to be accessible to educators and communities everywhere.” Ultimately the AMRE education program will provide teacher support through the Museum’s Web site via flash animation. “Reaching teachers in remote areas with programs based on the Museum’s unbelievable collection will enable us to expand far beyond the local level,” says Paula. It’s a task Paula feels prepared to tackle. “This job brings all of the skills that I’ve collected throughout my life together in one big project. Sort of a dream come true.”

All of us here at the Museum feel exactly the same way. Welcome, Dr. Paula. ✍



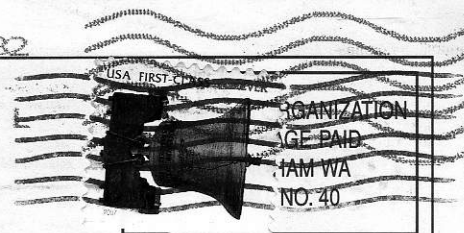
AMERICAN MUSEUM OF
RADIO AND ELECTRICITY
1312 BAY STREET
BELLINGHAM, WA 98225

Where discovery sparks imagination

Wednesday - Saturday
11 a.m. - 4 p.m.
Tours by appointment
General admission \$5
Ages 12 and under \$2
360.738.3886
www.amre.us

95212+325A

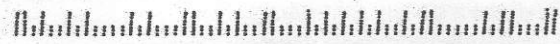
EVERETT WA 982



USA FIRST CLASS
ORGANIZATION
AGE PAID
IAM WA
NO. 40

ADDRESS SERVICE REQUESTED

First Generation Radio Archive
1402 S. Kalama Drive
Spokane, WA 98225



The American Museum of Radio & Electricity

thanks the following new and renewing members for their continuing support:

Alfred & Harriet Arkley
Alfred Balk
Robert Brain
Gary Brandt & Shelley Macy
Jim Brock
James Callis
John Cowley family
Michael & Leslie Guelker-Cone
Leslie Hall & Fred Sodr
Doug Hathaway
Charles Hill
Barry Joseph
John Kittross
Becki Lawson
John Lukacovic Family

Mary Macari
Laine & Sue MacCartney
Brent Martin
Howard Mills
Calvin Morrison
Paul Naujoks
Rod O'Connor
Peter Popham
Earl Settlemyer
Frank Smith
William Thomas Steible
Susan & Norman Templeton
Jennifer Wilke
Beth Williams
Hugh Wilson

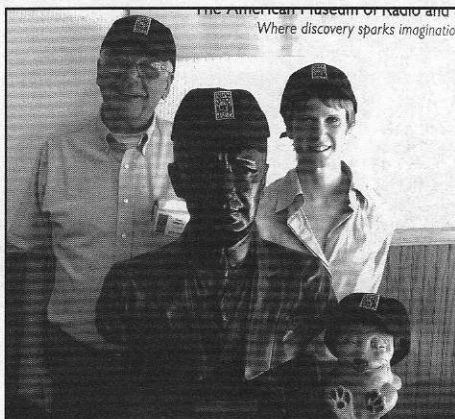
Welcome to everyone
at **SPIE**, an interna-
tional society that ad-
vances the science and
application of light.
Thank you for joining
at the Corporate level.

Special thanks to
Russell Dunbar for his
gracious donation in
memory of Richard
Henry McClure, who
was a fellow radio
enthusiast all his life.

Board of Directors

John Jenkins
Chairman/Curator
Jonathan Winter
President/Curator
Paul Tholfsen
Secretary/Treasurer
Jonathan Block
Jim Darling
John Hoyte
Diane Kamionka
Pete Kremen
Arlan Norman
Joseph Yaver

Join the Enlightened with
genuine AMRE merchandise!



Science instructors Carl Nemeth and Beth Williams are in smart company wearing authentic AMRE caps. Visit our Gift Shop today!

You are invited To a Special Showing of NEW ECONOMICAL
ZENITH
FARM RADIOS Operated by Freepower from the air!
— And the Genuine 6-Volt DeLuxe
WINCHARGER
STOP Spending Money for DRY BATTERIES!
END ALL Recharging Nuisance!
ONLY 50¢ A YEAR Power Operating Cost!

Complete with 4-foot spreader, 2000 ft. cable, 6-volt 60 amp 6-hour storage battery, 500-watt 6-volt 60 amp motor, and 1/2" diameter cable.

SPECIAL PRICE Only \$1500 with new 6-Volt Zenith Farm Radio

Image from wincharger.com

In 1938, Wincharger produced the most popular wind-driven battery generator in the world. Are they still manufactured and used today? Visit www.amre.us for the surprising answer.

Where Discovery Sparks Imagination

The American Museum of Radio and Electricity is dedicated to the preservation of important artifacts from the dawn of electricity through broadcast radio's Golden Age. Recognizing that these artifacts and the stories behind them have immense cultural, historic, aesthetic, and scientific importance, the Museum displays thousands of objects in a series of exciting, interactive exhibits designed to entertain and educate people of all ages. ✎

This file including all text and images are from scans of a private personal collection and have been scanned for archival and research purposes. This file may be freely distributed, but not sold on ebay or on any commercial sites, catalogs, booths or kiosks, either as reprints or by electronic methods. This file may be downloaded without charge from the Radio Researchers Group website at <http://www.otrr.org/>

Please help in the preservation of old time radio by supporting legitimate organizations who strive to preserve and restore the programs and related information.