

CHUCK SCHADEN'S  
**NOTALGIA NEWSLETTER** AND **RADIO GUIDE**  
FROM THE HALL CLOSET • BOX 421 • MORTON GROVE, IL 60053 © MAY, 1980



JOE KELLY had been emcee of the National Barn Dance for ten years when he became the Quizmaster on The Quiz Kids. Kelly didn't get beyond the third grade in school, but his natural wit and ease with children made him a good choice to ask the questions of the young pannel. The program made its debut on NBC radio on June 28, 1940 and was a listener favorite for more than a decade, going off the air in 1953. Joe Kelly and the Quiz Kids were also seen on TV from 1949 to 1953.

# "AND HERE IS MAJOR BOWES"

With this Brief and Informal Introduction each Thursday Night Ralph Edwards, one of Columbia's Star Announcers, presents Major Edward Bowes, Radio Favorite of Countless Millions . . .

REPRINT from RADIO VARIETIES, May 1940

Introducing Major Bowes to an American radio audience is an easy assignment. Everybody knows Major Bowes. Although there are no figures available to prove it, a statement that the voice of Major Bowes has at some time or other gone into every radio equipped home in the country seems safe and reasonable.

That practically the entire population of the nation has a radio acquaintance with the famous radio impresario of the Original Amateur Hour appears less startling when it is considered that Major Bowes is truly a pioneer of the air waves. Away back in 1922 Major Bowes, with the same keen foresight that marked his early business adventures, saw the entertainment possibilities of radio.

At that time he was managing director of the Capitol Theater, America's first movie palace, which he had envisioned and built. Establishing precedents was routine with Major Bowes even at that early date, and he added to his list of "firsts" by putting the Capitol theater stage show on the air.

The success of this program was instantaneous. Two and a half years later the Major developed it into "Major Bowes' Capitol Family," a program which today, after eighteen years of consecutive weekly presentations, is one of the most popular on the air.

Major Bowes still directs this program every Sunday morning over a coast-to-coast network of the Columbia Broadcasting System. Nor does the Major have

to sacrifice the pleasures of his beautiful Rumson, New Jersey, estate, "Riveredge" to do so. By the simple trick of remote control Major Bowes frequently directs the program from the library of his multi-roomed home. On these occasions you would never know by listening that the Major was not with the Capitol Family entertainers in Columbia's New York studio. Listeners find added interest in the fact that he is directing the program from "Riveredge," overlooking the beautiful Shrewsbury river.

Major Bowes is best known to the world's radio listeners as the originator and impresario of the Original Amateur Hour, a program sponsored by the Chrysler Corporation and a regular Thursday night feature of the Columbia System.

Soon Major Bowes will begin the sixth year of this popular program as a national network radio feature. On Anniversary night the wheel of fortune—that mythical gadget governing the destinies of Major Bowes' Amateur performers—will spin a little faster, perhaps, as the excitement of turning another radio milestone hurries the Major's hand.

It was March 24th, 1935, that Major Bowes spun his wheel of fortune for the first time on a coast-to-coast network. A year prior—in April, 1934—Major Bowes had launched his Original Amateur Hour program over a single New York station.

Today, after five years of nation-wide broadcasting, there is no indication of

waning popularity for Major Bowes and his Amateur Hour program. During the past year Major Bowes' listening audience on this program has reached a new all-time high of 27,000,000 in the United States alone. The size of the program's foreign audience is unknown, but the number of letters weekly from listeners who receive the program over Columbia's short wave outlets indicates an audience of substantial proportions made up of listeners from all parts of the world.

Just how many more millions tune in Major Bowes each week via the Capitol Family program has never been determined, but it has the largest rating of any sustaining program as well as the largest audience of all daytime programs.

To many, the sustained popularity of the amateur hour program constitutes an inexplicable radio phenomenon. To Major Bowes, earnest student of Americana and master of psychology, there is nothing phenomenal about the continual allegiance of the listening public to this program. The Major knows, for one thing, that he directs one of the most human programs on the air. It is a program in which is hidden each night the magic key to the door of opportunity. Every amateur reaches for that key when he steps before the microphone—every listener hopes he finds it.

Under the expert guidance of Major Bowes, a profound student of human nature, the amateur hour has taken on the proportion of an American institution. No longer do amateurs apply for a place on the program on a dare or to comply with the rigmarole of a college fraternity initiation.

Amateurs who aspire to the original amateur hour program now are serious-minded young people, many of whom have spent long arduous years in the development of their musical, vocal or dancing talents. They approach Major Bowes and his vast organization with serious minds and determined hearts. These unknowns recognize the amateur hour program for what Major Bowes has fashioned it to be, namely, the bridge between nonentity and usefulness, between failure and success, obscurity and fame.

While records on file in Major Bowes' office indicate that a vast majority of applicants for a chance on the program are ambitious to make the theater their career, there are many who have no



COMMODORE BOWES

Major Edward Bowes, radio's impresario of the CBS Original "Amateur Hour," recently launched his 87-foot yacht, the "Edmar," named for himself and the late Mrs. Bowes, formerly Margaret Illington. An unusual feature on the "Edmar" is a ship-to-shore telephone which permits the Major to get in touch with his office.

intention of doing so. Amateurs are auditioned at the rate of 500 a week and they come from all walks of life. Many of these amateur applicants have attained notable success in their chosen endeavor and are perfectly contented with their lot in life. Their applications are usually based on a desire for momentary recognition in a foreign field.

Major Bowes welcomes all of them. Possessing a complete understanding of the theater and a genuine, deep-rooted love for it, the Major hopes to find a trace of potential theatrical greatness in every amateur applicant.

Many Bowes amateurs have reached high places in the theatrical world. Dozens of them have stepped from the amateur ranks via the Major Bowes program to lucrative engagements on the legitimate stage and not a few have enjoyed marked success in motion pictures. Many are to be found in New York night clubs and other places of light entertainment and several are vocalists with big-name bands.

BOOK SIX

CHAPTER FIVE

MAY, 1980

CHUCK SCHADEN'S NOSTALGIA NEWSLETTER AND RADIO GUIDE is published ten times a year by The Hall Closet, Box 421, Morton Grove, Illinois 60053. (312/865-7763). Annual subscription is \$7.00 for 10 issues. Your subscription expires with the issue date noted on the mailing label. A renewal reminder is sent with the last issue of your subscription.

# SUMMERTIME - THE ANNUAL RADIO BLACKOUT

With the thermometer streaking up the scale to the boiling point, the annual radio blackout of headline names and the summer substitution of alternate shows is on the way. And while listeners may miss some of their favorites a bit, the broadcasting business has learned from long and practical experience that oftentimes it's better for a radio top-notch to take a vacation. The point of the whole situation is that the headliners wear out at the end of a season, even as you and I, and a precipitous flight to the sea shore or the tall timber is a good insurance policy for a successful air return in the fall.

REPRINT from RADIO MAGAZINE, July, 1940

Don't let the fact that summer is here scare you away from the dials. While the names of the performers may be different from the one's you've been listening to, the radio fare isn't going to be any less palatable. In fact, several of the substitute bills represent a very agreeable change in the listening pace, and you'll probably come to the conclusion next fall when the favorites return that you've developed a new edge on your listening appetite simply because of the fact that you've had a chance to hear something else for a change.



Jim Ameche

The summer exodus was slated for July 2 at 9:00 p. m. CDST over the NBC-Red network when Tommy Dorsey, the "sentimental gentleman of swing," took over the tiller from Bob Hope. While Bob, plus Jerry Colonna, Brenda and Colina were scrambling off the airlines, Dorsey was getting set to fill in the gap, aided by the Pied Pipers Quartet, Frank Sinatra and Connie Haines. Hope will resume on September 24.

Fibber McGee and Molly also pulled their getaway just in time for a substitute play by Meredith Willson's orchestra, Kay St. Germain and Ray Hendricks on July 2, 8:30 p. m. CDST, NBC-Red. The summer show was originally set to be called America Sings, but it went on the air as Meredith Willson's Musical Revue. In any event, what the radio audience will find in place of the Wistful Vista scenery is a thoroughly swell half-hour of music pitched up by one of the best men in the business. As a singer, the St. Germain lassie is certainly no slouch, and young Mr. Hendricks is one of the best in his line.

Fred Allen's trip to the haystack, or wherever else it is he plans to spend the summer, finds Lou Costello, Bud Abbott and the blonde Blitzkrieg, Benay Venuta, taking up the harness Wednesday nights at 8:00 p. m. CDST, NBC-Red, starting July 3. The Venuta is almost too well-known on the networks to need an explanation here, but for the sake of jogging your memory, put it down that she's been singing commercially ever since the 1929 market crash put her papa's fortune on the skids. The fireball comedy of Abbott and Costello is also a well known quantity.

Jack Benny did a quick fadeout to Hawaii with Mary Livingston following

their June 16 broadcast, and returns to the Jell-O plugging on October 6. His rindmaster, Phil Harris, meantime will be storming barns with his band in a series of personal appearances. Replacing this outfit is Ezra Stone and the Aldrich Family series, heard all during the winter on the Blue network.

Incidentally, Hawaii is also going to hold Charlie McCarthy and Edgar Bergen — or try to hold them, at any rate. They aren't due back until September 1. There will be no direct summer substitute for this particular combination.

Olan Soule of the "Bachelor's Children" cast has given up all plans for a vacation this year and will concentrate

on getting his outdoor badminton court in shape. Mr. and Mrs. Soule had big plans for a vacation this year during the two weeks Olan is excused from his part of "Sam" on "Bachelor's Children." However, along came fat parts on two other shows for Olan during the 14-day vacation period, and vacation plans flew out the window.

The annual trek away from radio will find Bing Crosby going into the silences following his broadcast on August 8. Plans for the Bingo contemplate a month's restup at his Del Mar track, and then he shoves off with the Missus for South America — the announced intention being the purchase of a few horses that he hopes will win races in addition to champing on the Crosby supply of oats. As in past seasons, Bing's bazooka tooting team mate, Bob Burns, will do honors on the Kraft Music Hall show.

Of the other headline names you might expect to find on the vacation list, the name of Rudy Vallee does not appear. After ten solid years of broadcasting, Rudy got in a real vacation last summer, and he plans to continue his present broadcast right on through the hot season.

Mark Warnow, maestro of Columbia's "Hit Parade," will spend most of his spare time on the water. He's busy moving into a new home at Great Neck, Long Island, where the most important feature (to him) is the boat dock for his yacht, "Bobill." Every time Mark has a few free days he gathers up friends for a yachting party. His only rules are (1) no musical instruments and (2) enough people to make up a bridge game.



Olan Soule

The July 3 shift finds Gale Page and Jim Ameche co-starring in the summer Hollywood Playhouse series, heard Wednesdays at 7:00 p. m. CDST, also

over the Red net, in place of Charles Boyer. If you've followed this particular drama over the past few years you've encountered the Page-Ameche combination before, and you will recognize it for a winner.

Cecil B. DeMille, director of "Lux Radio Theater" is another yachting enthusiast. His "Seaward" will be headed seaward every day he can get away from his duties.

What vacation Jim "Ask-It Basket" McWilliams gets he'll take basking in the sun on Virginia Beach between broadcasts. As genial Jim put it, "My summer will be from 'Basket' to 'Basking'."

Barbara Luddy, "First Nighter" leading lady will spend her vacation in California, visiting her mother who lives there.

Alec Templeton, the young piano wizard, bowed out of the broadcasting schedule on June 28, scheduling his return for a date in September. While

there will be a substitute program on the air in the Templeton spot by the time you read this, as the words are written no announcement has been made and the information is, therefore, unavailable.

But Johnny Green, busy with "Johnny Presents" and his Sunday CBS show, "Musical Game," hardly knows what he'll do for a summer vacation. He thinks he'll be able to get in a few quick games of golf, and this year he's somehow going to wrangle two days to see the World's Fair.

Columbia's Kate Smith is, perhaps, one of the most fortunate this summer. When her hour show recesses, she will take remote broadcasting equipment with her to her summer home at Lake Placid. Kate's noonday program will come from the lakeside.

And Kate can expect to see "Hit Parade" baritone Barry Wood, up there, too. Because Barry will be at Lake Placid keeping fit by swimming when he isn't rehearsing his songs. Barry used to swim on the Yale water-polo team, and when he swims — well, he swims.

"Myrt and Marge" are going to have to take their vacations by week-ends, also. "Myrt" has a summer place — with swimming pool — at Tenafly, N. J. "Marge" has a summer place — with swimming pool — at Haworth, nearby. Right now they can think of nothing nicer than the summer's sunny Saturdays and Sundays.

But it doesn't look as if the old maestro, Ben Bernie, and Columbia's Glenn Miller are going to get much of a vacation at all. Miller is on an extended tour of the country, playing one-night stands. The biggest vacation he has to look forward to is a long engagement in Chicago where he and his boys will get a chance to stretch their legs and take a dip in Lake Michigan.

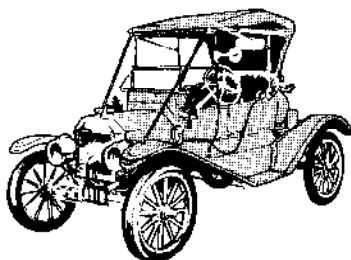
Bernie will be on a tour headed in the general direction of California. Ben knows that by the time he gets to Hollywood he'll be ready for a vacation and he just hopes there's a nice, relaxing horse race to watch.

One of the most sensible vacations will be taken by Lesley Woods, "Carol Evans" in CBS's "Road of Life." Just as soon as Lesley can arrange two weeks off, she's going to try to get rid of a lingering cold. Under doctor's supervision she'll take sun lamp treatments for two weeks, go on a special diet, and stay in bed.

Get Your

**NEW  
FORD**

from  
an  
**Old-Fashioned  
Dealer**



**NELSEN-  
HIRSCHBERG  
FORD**

Since 1931

5133 W. Irving Park Rd.

—Open—

Monday thru Friday

Until 9pm

Saturday and Sunday

Until 5pm

- Respect
- Courtesy
- Reputation

## CLAUDE THORNHILL IN THE PACIFIC

REPRINT from TUNE IN Magazine, July 1945

**F**AITHFUL fans who've regretted the loss of Claude Thornhill's swing-wise baton on the "pop" music podium will be glad to know that his special talents are not being wasted. The genial good-mixer is taking his infectious personality and cheering rhythms right where they're most needed—into forward areas in the Pacific.

It's been nearly two years now since Claude deserted his top-flight civilian orchestra to enlist as an apprentice seaman in the Navy. In October, 1942, he fully believed he'd turned his back on musical aspirations for the duration. "It isn't the easiest thing in the world to put aside your hopes and ambitions you've worked on for years and break up an organization that has attained an important place for itself. But at this time there is something far greater at stake than any career—and that is the protection of the democratic way of life, which permits us to pursue whatever career we plan for ourselves. While that is in danger, there is no reason to carry on normally."

What Claude didn't realize was that music could be a highly-valued contribution in the service, too. He was set to organizing small entertainment units for the benefit of Navy men isolated on various islands in the Pacific, proved so successful at generating laughs and gaiety that morale-building has become his full-time job.

The husky five-foot-eight maestro now carries the title of Chief Musician,



CLAUDE THORNHILL

is heading an all-star big-league talent group which he recently recruited in the United States at the special request of Admiral William Calhoun. Headlining the unit are such familiar show-business names as tenor Dennis Day, voice-changer Tommy Riggs (creator of *Betty Lou*), the comic Graziano Brothers of vaudeville fame, and the Ringling Brothers' veteran circus clown, *Bozo* (Larry A. Valli).

The entire group is especially welcome wherever it goes, not only because of its outstanding personnel, but because every member of the troupe is a Navy man. All other touring units in the area are sponsored by such organizations as the USO or Camp Shows, Inc. That means that the Thornhill aggregation has a special function—to follow the fleet and give shows on ships or in the front lines, wherever civilian performers cannot appear.

As servicemen, too, Thornhill and his fellow-croupers receive no special treatment—they share the mess and sleeping quarters of the boys they entertain, get to new bases by whatever means are available (several times on fighter planes). And they share also the warming knowledge that they're doing some constructive work toward V-Day.

# THOSE WERE THE DAYS • WNIB- FM 97.1

## SATURDAY AFTERNOONS • 1:00 UNTIL 5:00

SATURDAY, MAY 3rd  
RADIO FROM A TO H

**A AMOS 'N' ANDY** (1950s) Freeman Gosden and Charles Correll star as Andy proposes to his girl friend and she accepts. The Kingfish tries to sell him a tuxedo. AFRS (Armed Forces Radio Service) Rebroadcast. (9:40; 14:00)

**B BIG SISTER** (1940s) An isolated episode in the continuing drama of Ruth Evans and her husband Dr. John Wayne in the town of Glenn Falls. Jim Ameche announces. Rinso, CBS. (13:50)

**C CHARLIE MC CARTHY SHOW** (9-14-47) Edgar Bergen and friends: Charlie, Mortimer Snerd, Anita Gordon, Pat Patrick, Ken Carpenter, Ray Nobel and the orchestra and guest "Prince" Michael Romanoff. Chase and Sanborn, NBC. (10:20; 9:20; 10:45)

**D DOCTOR CHRISTIAN** (11-26-49) "Cupid's Boomerang" stars Gene Hersholt as the good doctor with Rosemary DeCamp as Nurse Judy Price. It's "the only show in radio where the audience writes the script." Vaseline, CBS. (13:55; 10:45)

**E EASY ACES** (1940s) Goodman and Jane Ace in an isolated episode as Jane answers an investment ad. Written by Goodman Ace. NBC. (12:00)

**F FIBBER MC GEE AND MOLLY** (5-31-49) Jim and Marion Jordan star with Bill Thompson, Gale Gordon, Arthur Q. Brian, Dick LeGrand, Harlow Wilcox, the King's Men, Billy Mills and the orchestra. It's the last show of the season and Fibber plans his summer vacation. Johnson's Wax, NBC. (9:16; 12:06; 8:12)

**G GOLDBERGS** (12-10-40) An isolated episode in the continuing story of Molly Goldberg and her family. Gertrude Berg stars as Molly. Oxydol, CBS. (14:30)

**H HALLMARK HALL OF FAME** (1-3-54) "Salute to Tom Mix" hosted by Lionel Barrymore. John Dehner stars as Tom with guest appearances by Clark Gable, Gene Autry, Roy Rogers, Bill Boyd, Will Rogers, Jr. Hallmark Cards, CBS. (12:35; 16:50)

# Radio from A to Z

SATURDAY, MAY 10th  
RADIO FROM I TO M

**I INNER SANCTUM** (10-24-49) "Night is My Shroud" is Raymond's story as the creaking door opens. A man is able to "wish" others to death! AFRS rebroadcast. (12:45; 12:18)

**J JACK BENNY PROGRAM** (10-25-38) Jack and the gang: Don Wilson, Mary Livingstone, Kenny Baker, Phil Harris. They discuss last week's show and make plans for next week's Romeo and Juliet sketch. Jell-O, NBC. (9:25; 11:55; 5:50)

**K KRAFT MUSIC HALL** (10-16-47) Al Jolson welcomes Bing Crosby to the Music Hall. With Oscar Levant, Lou Bring and the orchestra and chorus, and announcer Ken Carpenter. Bing and Al offer a great Gershwin medley. Kraft Foods, NBC. (10:20; 7:35; 11:10)

**L LITTLE ORPHAN ANNIE** (1936) An isolated episode in the adventures of the little chatterbox with the pretty auburn locks. Pierre Andre announces. Shirley Bell stars. Ovaltine, NBC. (14:45)

**M MAXWELL HOUSE SHOW BOAT** (7-2-36) Lanny Ross emcees a variety show with guests Bob Hope and Judy Canova. A salute to the city of Portland, Maine, where the show originates this week. Maxwell House Coffee, NBC. (13:55; 9:00; 15:36; 16:15)

SATURDAY, MAY 17th  
RADIO FROM N TO T

**N NATIONAL BARN DANCE** (12-5-42) Joe Kelly, the Hoosier Hot Shots, Lulu Belle and Scotty, the Dinning Sisters, Arkie, the Arkansas Woodchooper with guests Tom, Dick and Harry entertain from the old hayloft. Alka Seltzer, NBC, WLS. (10:00; 9:40; 9:55)

**O OUR MISS BROOKS** (1-30-49) Eve Arden as Miss Brooks with Gale Gordon as Mr. Conklin, Jeff Chandler as Mr. Boynton, Richard Crenna as Walter Denton and Jane Morgan as Mrs. Davis. Miss Brooks fails to deposit money in the school bank. Palmolive, Lustre Creme, CBS. (11:36; 17:38)

# THOSE WERE THE DAYS • WNIB- FM 97.1

## SATURDAY AFTERNOONS • 1:00 UNTIL 5:00

**P PHILCO RADIO TIME** (11-19-47) Bing Crosby welcomes actor Barry Fitzgerald. John Scott Trotter and the orchestra, the Rhythmaires, Dorothy Kirsten, Ken Darby Chorus, announcer Ken Carpenter. Philco Radios, ABC. (11:00; 10:35; 7:30)

**Q QUIZ KIDS** (4-11-48) Broadcasting from Dearborn, Michigan, chief quizmaster Joe Kelly tries to stump Joel Kupperman, Renny Templeton, Patrick Conlon and Lonny Lunde. Alka Seltzer, NBC. (10:20; 9:55; 7:45)

**R ROAD OF LIFE** (6-7-44) An isolated episode in the continuing story of Dr. Jim Brent. Duz, NBC. (14:00)

**S SHADOW** (10-20-46) "Blood Money" stars Bret Morrison as Lamont Cranston with Lesley Woods as the lovely Margot Lane. The Shadow clouds mens' minds in a gambling casino. Carey Salt, MUTUAL. (14:20; 14:25)

**T TERRY AND THE PIRATES** (2-9-42) An isolated episode in the continuing adventures of Terry Lee, Pat Ryan, Burma and others facing peril in the Orient. Quaker Puffed Rice Sparkies, NBC BLUE. (14:40)

SATURDAY, MAY 24th  
RADIO FROM U TO Z

**U UNCLE DON READS THE FUNNIES** (8-21-38) Don Carney reads the Sunday comics from the New York Journal American: Bringing Up Father, Flash Gordon, Tim Tyler's Luck, Tillie the Toiler, Skippy, Little King, Katzenjammer Kids and others. Comic Weekly, WOR MUTUAL. (14:25; 14:25)

**V VIC AND SADE** (6-7-44) Radio's home-folks, written by Paul Rhymur. Sade pauses to enjoy the sunshine and visits with Uncle Fletcher out by the garbage box. Bernadine Flynn, Clarence Hartzel, Crisco, NBC. (14:55)

**W WHISTLER** (6-2-48) "Stranger in the House" is the Whistler's strange story. A woman's missing foster brother turns up alive after seven years. Signal Oil Co., CBS WEST. (7:35; 16:35; 4:40)

**X X MINUS ONE** (8-1-57) "End As a World" stars Jack Grimes, Larry Robinson, Peter Fernandez. Morning paper headline. This Is The Day The World Ends. Sustaining, NBC. (10:09; 9:45)

**Y YOUR HIT PARADE** (3-23-46) Johnny Mercer, Joan Edwards, Mark Warnow and the orchestra, and the Hit Paraders sing the top tunes of the week. Announcer is Kenny Delmar. AFRS rebroadcast. (8:05; 11:25; 9:20)

**Z ZIEGFELD FOLLIES OF THE AIR** (1-27-36) From the stage of the Winter Garden Theatre on Broadway, Fanny Brice, James Melton and Al Goodman and the orchestra present a radio version of the famous producer's show. Palmolive, CBS. (16:45; 17:30; 14:50; 8:50)

SATURDAY, MAY 31st  
MUSIC ON THE AIR

**CHICAGO THEATRE OF THE AIR** (1-29-49) "Sweethearts" is a birthday tribute to composer Victor Herbert. Orchestra conducted by Henry Weber, remarks by Marion Claire. Broadcast from WGN studios in Chicago. Sustaining, MUTUAL. (27:30; 19:25)

**TELEPHONE HOUR** (1944) Ezio Pinza is the guest artist in this rebroadcast (under the title "Music From America") for the Armed Forces Radio Service. Donald Voorhees conducts the Bell Telephone orchestra. (10:35; 11:15; 7:50)

**LONGINES SYMPHONETTE** (3-4-44) Frank Knight is host for a program of the "world's most honored music." Mishel Piastro conducts. Longines-Wittnauer Watch Company, Syndicated. (14:45)

**VOICE OF FIRESTONE** (11-30-53) The 25th anniversary broadcast of the program features Jerome Hines, Rise Stevens, Thomas L. Thomas, and Howard Barlow and the orchestra. Last half of this program was simulcast on television. Firestone Tire and Rubber Company, NBC. (13:30; 13:45; 15:30; 13:00)

**RAILROAD HOUR** (10-9-50) "Roberta" starring Gordon MacRae and Ginny Simms with Edna Best, the Norman Luboff Choir and Carmen Dragon and his orchestra. Marvin Miller announces. Association of American Railroads, NBC. (15:50; 13:40)

## NORTH WEST FEDERAL SAVINGS

COMING  
ATTRACTIONS

If you have a fondness for the "good old days" then you're invited to enjoy some nostalgic programs at the North West Federal Savings Community Center Auditorium, 4901 W. Irving Park Road, Chicago. There's plenty of free parking in the large lot on Dakin Street at the rear of the NWF office or CTA transportation will take you to the door. Enter the Community Center thru the parking lot. Visitors who arrive by CTA should walk south along the side of the NWF building, then turn west to the entrance to the Center.

Most programs begin at 8 p.m. and doors to the auditorium open at 7:30 p.m. Proceeds are donated to recognized charities.

ADVANCE TICKETS to these events, unless otherwise specified, are available at any office of North West Federal Savings.

Here's the line-up of coming attractions for the weeks ahead:

### SATURDAY, MAY 3rd

**HERE WE GO AGAIN (1942)** starring Jim and Marion Jordan as Fibber McGee and Molly with Edgar Bergen and Charlie McCarthy, Hal Peary as The Great Gildersleeve, Ginny Simms, Bill Thompson, Gale Gordon, Isabel Randolph, Mortimer Snerd and Ray Nobel and the Orchestra. The folks from 79 Wistful Vista with some first-rate screen entertainment. PLUS Selected Short Subjects: Color Cartoon; Fox Moviestone Newsreel (1942); "Zorro's Fighting Legion" Chapter 9 - "The Golden Arrow." (\$1.25)

### SATURDAY, MAY 10th MEMORY MOVIES' EIGHTH ANNIVERSARY SHOW

**THE SHADOW RETURNS (1946)** Kane Richmond stars as Lamont Cranston as the mysterious Shadow comes to the motion picture screen. **GREAT GILDERSLEEVE (1942)** Hal Peary stars as Gildy in politics and in trouble. PLUS Selected Short Subjects: Color Cartoon; Fox Moviestone Newsreel (1945); "Zorro's Fighting Legion" Chapter 10 - "Mystery Wagon" (\$1.25)

**SATURDAY, MAY 17th**  
**BIG BROADCAST OF 1937 (1936)** Jack Benny, George Burns and Gracie Allen, Martha Raye, Shirley Ross, Ray Milland. Short on plot, long on musical numbers, comedy and specialties. Guest stars include Leopold Stokowski, Larry Adler, Benny Goodman. PLUS Selected Short Subjects: Mighty Mouse Cartoon "Frankenstein's Cat"; Mills Brothers On Parade (1955); "Zorro's Fighting Legion" Chapter 11 "Face to Face." (\$1.25)

### SUNDAY, MAY 18th

**SALUTE TO GRACE MOORE** - Historian Bill Sheldon presents a multi-media tribute to one of the most marvelous entertainers of all time, Miss Grace Moore. The program will include slides and tapes of her performances on records and radio and the complete motion picture **ONE NIGHT OF LOVE (1934)** starring Grace Moore, Tullio Carminati and Lyle Talbot. A classic musical about an aspiring opera star and her demanding teacher. (\$2.00)

### SATURDAY, MAY 24th

**CHECK AND DOUBLE CHECK (1930)** Freeman Gosden and Charles Correll star as Amos 'n' Andy with Sue Carol, Irene Rich, Roscoe Ates, Duke Ellington and his Cotton Club Orchestra. The famous radio team brings fun to the screen. PLUS Selected Short Subjects: Amos 'n' Andy cartoon "The Rasslin' Match"; "The Black Network" (1936) with Nicholas Brothers and Amanda Randolph; "Zorro's Fighting Legion" Chapter 12 - "Unmasked" (\$1.25)

### SATURDAY, MAY 31st BLOCKBUSTER MOVIE!

**THAT'S ENTERTAINMENT (1974)** M-G-M's star-studded recap of 50 years of great musical hits from Busby Berkeley to Garland, Astaire and Kelly. It's a fantastic look at the growth of Metro-Goldwyn-Mayer narrated by Frank Sinatra, Elizabeth Taylor, Mickey Rooney, James Stewart, Donald O'Connor, Peter Lawford, Gene Kelly, Fred Astaire, Lisa Minelli and Bing Crosby. Over 75 M-G-M stars are featured in this outstanding tour down memory lane. (\$2.00)

# THE HALL CLOSET CASSETTE TAPE RADIO MONTH SPECIAL MAY FAMILY PACK

AVAILABLE DURING MAY AT  
METRO-GOLDEN-MEMORIES IN  
CHICAGO & MORTON GROVE  
OR AT ANY OFFICE OF NORTH  
WEST FEDERAL SAVINGS.

Set  
of  
3  
Tapes

**14.00** Plus Tax

By mail

PLEASE ADD \$1.00 FOR TAX  
AND TO HELP WITH POSTAGE.  
SEND TO -

THE HALL CLOSET  
BOX 421  
MORTON GROVE, IL 60053

## INNER SANCTUM

Song Of The Slasher

The only clue the police have to the identity of the Slasher is the eerie tune he whistles after he kills his victims. A spine-chilling tale, with an unexpected twist ending. Raymond, the host, is behind the squeaking door. Sponsored by Lipton Tea and Soup. Broadcast April 24, 1945. MM 5795

## HERMIT'S CAVE

Hanson's Ghost

"Ghost stories ... weird stories ... and murders, too!" The hermit tells the tale of a young couple who experience supernatural happenings when they visit their uncle in an old, mysterious house. Sponsored by Carter Coal Company ... their 406th broadcast of this show in 1945.

## BOB HOPE SHOW

Guests - Fred Astaire, Jerry Colonna and Vera Vague

This is BOB - broadcasting from Woodland Hills, California, where the deer and the real estate agent play - HOPE. Fred Astaire talks about his new movie, "Easter Parade," and he and Bob do a sketch about a pair of down-and-out vaudevillians. With Les Brown's orchestra. Sponsored by Pepsodent Tooth Paste.

## RICHARD DIAMOND PRIVATE DETECTIVE

Starring Dick Powell and Ed Begley  
In "The Jacoby Case"

The police think Jacoby, a convicted, deported criminal, is back in town. He's out to get Diamond because Diamond was the guy who put Jacoby away. At conclusion of program, Powell sings, "Dreamer's Holiday."

## AMOS 'N ANDY

The Kingfish Sells Andy  
a Car Without a Motor

With Freeman Gosden and Charles Correll, The Jubilaires and Jeff Alexander's Orchestra, The Kingfish needs \$100 to take Sapphire on a trip, so he sells Andy a car ... \$100 down and the balance F.O.B. ... Frances on the Barrelhead.

## LUM AND ABNER

Lum Wants To Send A Valentine  
To His Girlfriend Rowena

Lum is upset at the price charged for a valentine (35¢) in a gift shop and he decides to make one himself and save a few cents. He and Abner try and come up with an appropriate verse and many complications evolve from the simple task of making a valentine.

# ALPHABETICAL INDEX TO POPULAR PROGRAMS

TUNE IN has listed in alphabetical order the most popular programs. They are arranged as most commonly known either by the headliner or the name of the program. For example you will find "A date With Judy" under (A) rather than under (G) for Judy Garland.

NBC is listed (N); CBS (C); Blue Network (B); MBS (M). Time is EWT

Deduct 1 hour for CWT—3 hours for PWT

REPRINT from TUNE IN, June, 1943

## A

Aces, Easy. . . . . Wed. to Fri. 7:30 P.M. (C)  
 A Date with Judy. . . . . Wed. 9:00 P.M. (N)  
 \*Adventure of the Thin Man. . . . . Fri. 8:30 P.M. (C)  
 \*All Time Hit Parade. . . . . Fri. 8:30 P.M. (N)  
 Allen, Fred. . . . . Sun. 9:30 P.M. (C)  
 Amanda Honeymoon Mill M. to F. 10:30 A.M. (C)  
 Ameche, Jim. . . . . Wed. 8:30 P.M. (B)  
 American Melody Hour. . . . . Tues. 7:30 P.M. (C)  
 Are You A Genius? Mon. to Fri. 5:30 P.M. (C)  
 Army Hour. . . . . Sun. 3:30 P.M. (N)  
 Authors Playhouse. . . . . Wed. 11:30 P.M. (N)  
 Autry, Gene. . . . . Sun. 6:30 P.M. (C)

## B

\*Bachelor's Children. Mon. to Fri. 10:45 A.M. (C)  
 Baker, Phil. . . . . Sun. 10:00 P.M. (C)  
 Barrymore, Lionel. . . . . Wed. 9:00 P.M. (C)  
 Basin Street Chamber Music. Sun. 9:15 P.M. (B)  
 Battle of the Sexes. . . . . Tues. 9:00 P.M. (N)  
 Baukhage, H. R. Mon. to Fri. 1:00 P.M. (B)  
 Beat The Band. . . . . Tues. 10:30 P.M. (N)  
 Between the Bookends Mon. to Fri. 3:45 P.M. (B)

Big Sister. . . . . Mon. to Fri. 12:15 P.M. (C)  
 \*Blondie. . . . . Mon. 7:30 P.M. (C)  
 \*Borge, Victor. . . . . Mon. to Fri. 7:00 P.M. (B)  
 Bowes, Major. . . . . Thurs. 9:00 P.M. (C)  
 Brady, Fred. . . . . Thurs. 7:30 P.M. (N)  
 Breakfast Club. . . . . Mon. to Fri. 9:00 A.M. (B)  
 Breakfast at Sardi's Mon. to Fri. 11:00 A.M. (B)  
 Brown, Cecil. . . . . Mon. to Fri. 8:55 P.M. (C)

## C

Calling Pan America. . . . . Sat. 4:30 P.M. (C)  
 Calmer, Ned. . . . . Mon. to Sat. 11:00 P.M. (C)  
 Camel Caravan. . . . . Fri. 10:00 P.M. (C)  
 Canova, Judy. . . . . Tues. 8:30 P.M. (C)  
 Can You Top This? . . . . . Sat. 9:30 P.M. (N)  
 \*Captain Midnight. . . . . Mon. to Fri. 5:45 P.M. (B)  
 Carnation Contented Hour. Mon. 10:00 P.M. (N)  
 Carroll, Madeline. Mon. to Fri. 5:00 P.M. (C)  
 Catholic Hour. . . . . Sun. 6:00 P.M. (N)  
 \*Cavalcade of America. . . . . Mon. 8:00 P.M. (N)  
 \*Ceiling Unlimited. . . . . Mon. 7:15 P.M. (C)  
 Chicago Round Table. . . . . Sun. 2:00 P.M. (N)  
 \*Christian, Dr. . . . . Wed. 8:30 P.M. (C)  
 Cities Service Concert. . . . . Fri. 8:00 P.M. (N)  
 Cleveland Symphony. . . . . Sat. 5:00 P.M. (C)  
 Club Matinee. . . . . Mon. to Fri. 4:00 P.M. (B)  
 Colonna, Jerry. . . . . Tues. 10:00 P.M. (N)  
 Come, Petry. . . . . Mon. to Fri. 4:30 P.M. (C)  
 Counter-Spy. . . . . Mon. 9:00 P.M. (B)  
 \*Crime Doctor. . . . . Sun. 8:30 P.M. (C)  
 Crosby, Bing. . . . . Thurs. 9:00 P.M. (N)  
 Crumit, Frank. . . . . Sat. 8:00 P.M. (C)

## D

Dallas, Stella. . . . . Mon. to Fri. 4:15 P.M. (N)  
 Danny Thomas Show. . . . . Sat. 7:30 P.M. (B)  
 Davis, Jean. . . . . Thurs. 9:30 P.M. (N)  
 \*Death Valley Days. . . . . Thurs. 8:30 P.M. (C)  
 DeMille, Cecil. . . . . Mon. 9:00 P.M. (C)  
 Dickenson, Jenn. . . . . Sun. 9:30 P.M. (N)  
 Dining Sisters. . . . . Mon. 7:30 P.M. (N)  
 Doctors at War. . . . . Sat. 5:00 P.M. (N)  
 \*Dorsey, Thomas. . . . . Wed. 8:30 P.M. (N)  
 Double or Nothing. . . . . Fri. 9:30 P.M. (M)  
 Dwayne, Morton. . . . . Mon. to Fri. 3:00 P.M. (B)  
 Dr. I. Q. . . . . Mon. 9:30 P.M. (N)  
 Dragonette, Jesslea. . . . . Sat. 9:45 P.M. (C)

## E

\*Edwards, Joan. . . . . Sat. 9:00 P.M. (C)  
 Elery Queen. . . . . Sat. 7:30 P.M. (N)  
 Elliot, Major. Mon. to Thurs. 10:00 P.M. (M)  
 Evans, Wilbur. . . . . Sun. 12:30 P.M. (B)

## F

Family Hour. . . . . Sun. 5:00 P.M. (C)  
 \*Famous Jury Trials. . . . . Tues. 9:00 P.M. (B)  
 Fibber McGee and Molly. Tues. 9:30 P.M. (N)  
 \*Fidler, Jimmy. . . . . Sun. 9:30 P.M. (B)  
 Fields, Gracie. . . . . Mon. to Fri. 10:15 P.M. (B)  
 Fitch Bandwagon. . . . . Sun. 7:30 P.M. (N)  
 Front Page Farrell. Mon. to Fri. 5:45 P.M. (N)

## G

\*Gang Busters. . . . . Fri. 9:00 P.M. (B)  
 \*Gay Nineties Revue. . . . . Mon. 8:30 P.M. (C)  
 Gibbs, Georgia. . . . . Thurs. 10:00 P.M. (N)  
 Graham, Ross. . . . . Fri. 8:00 P.M. (N)  
 \*Great Gildersleeve. . . . . Sun. 6:30 P.M. (N)  
 Godfrey, Arthur. Mon. to Fri. 6:30 A.M. (C)  
 \*Godwin, Earl. . . . . Mon. to Fri. 8:00 P.M. (B)  
 Goldbergs, The. . . . . Mon. to Fri. 1:45 P.M. (C)  
 Good Will Hour. . . . . Sun. 10:00 P.M. (B)  
 Goodman, Al. . . . . Sun. 9:30 P.M. (C)  
 Grant, Bob. . . . . Thurs. 10:30 P.M. (N)  
 Great Moments in Music Wed. 10:00 P.M. (C)  
 Green Hornet, The. . . . . Sun. 4:30 P.M. (B)  
 \*Grand Ole Opry. . . . . Sat. 7:30 P.M. (N)  
 Gunther, John. . . . . Fri. 10:00 P.M. (B)

## H

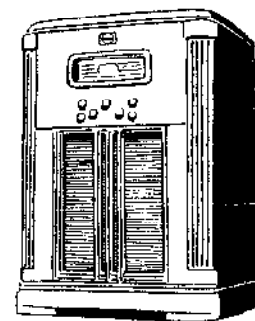
Hawley, Adelaide. Mon. to Sat. 8:45 A.M. (C)  
 Heatter, Gabriel. . . . . Mon. to Fri. 9:00 P.M. (M)  
 Hildegarde. . . . . Thurs. 10:30 P.M. (N)  
 Hill, Edwin C. . . . . Tues. 6:15 P.M. (C)  
 Heidt, Horace. . . . . Tues. 8:30 P.M. (N)  
 \*Hit Parade. . . . . Sat. 9:00 P.M. (C)  
 \*Hobby Lobby. . . . . Sat. 8:30 P.M. (C)  
 Hot Copy. . . . . Mon. 11:30 P.M. (N)  
 Houston, Josephine. . . . . Sun. 12:30 P.M. (B)  
 Howe, Quincy. . . . . Wed. 6:00 P.M. (C)  
 Hughes, John B. Tues., Wed., Fri. 10:00 P.M. (M)  
 \*Hunt, Frazier. . . . . Tues. and Thurs. 6:00 P.M. (C)

## I

\*I Love a Mystery. . . . . Mon. to Fri. 7:00 P.M. (C)  
 \*Inner Sanctum Mystery. . . . . Sun. 8:30 P.M. (B)  
 Invitation to Learning. . . . . Sun. 11:30 A.M. (C)

## J

\*Jack Armstrong. . . . . Mon. to Fri. 5:30 P.M. (B)  
 \*James, Harry. . . . . Tues. to Thurs. 7:15 P.M. (C)  
 January, Lois. . . . . Mon. to Fri. 5:30 A.M. (C)  
 Jergen's Journal. . . . . Sun. 9:00 P.M. (B)  
 Joe & Ethel Turp. Mon. to Fri. 3:15 P.M. (C)  
 \*Johnny Presents. . . . . Tues. 8:00 P.M. (N)  
 Joyce Jordan, M.D. Mon. to Fri. 2:15 P.M. (C)



## K

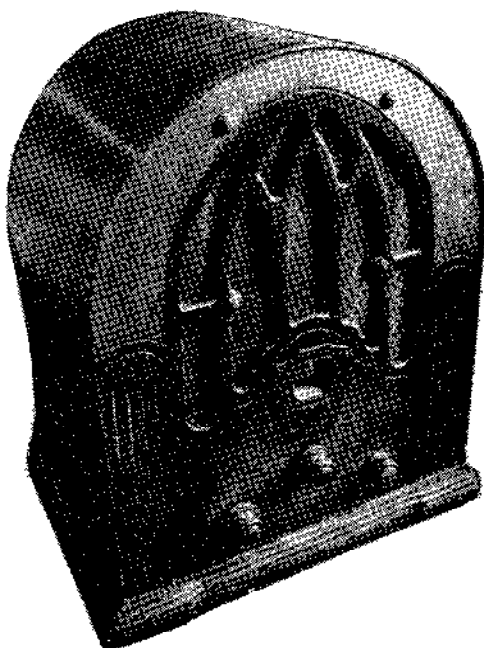
Kaltenborn, H. V. . . . . Mon. to Fri. 7:45 P.M. (N)  
 \*Kaye, Sammy. . . . . Wed. 8:00 P.M. (C)  
 Keep Working, America. . . . . Mon. 6:30 P.M. (C)  
 \*Kennedy, John B. . . . . Mon. 12:00 A.M. (C)  
 \*Kitty Foyle. . . . . Mon. to Fri. 10:15 A.M. (C)  
 Kraft Music Hall. . . . . Thurs. 9:00 P.M. (N)  
 Kastelanetz, Andre. . . . . Sun. 4:30 P.M. (C)  
 Kyser, Kay. . . . . Wed. 10:00 P.M. (N)

## L

Langford, Frances. . . . . Tues. 10:00 P.M. (N)  
 Lewis, Fulton, Jr. . . . . Mon. to Fri. 7:00 P.M. (M)  
 Life Can Be Beautiful. Mon. to Fri. 1:00 P.M. (C)  
 Light of the World. . . . . Mon. to Fri. 2:00 P.M. (N)  
 \*Lights Out. . . . . Tues. 8:00 P.M. (C)  
 Little Blue Playhouse. . . . . Sat. 11:30 A.M. (B)  
 \*Lone Ranger. . . . . Mon., Wed., Fri. 7:30 P.M. (B)  
 Lonely Women. . . . . Mon. to Fri. 2:15 P.M. (N)  
 Longmire, Carey. . . . . Mon. to Fri. 1:45 P.M. (N)  
 Lopez, Vincent. . . . . Mon. 1:45 P.M. (B)  
 \*Lord, Phillips. . . . . Mon. to Fri. 9:00 P.M. (B)  
 \*Lum and Abner. Mon. to Thurs. 8:15 P.M. (B)  
 Lux Radio Theatre. . . . . Mon. 9:00 P.M. (C)

## M

Ma Perkins. . . . . Mon. to Fri. 1:15 P.M. (C)  
 Malone, Ted. . . . . Mon. to Fri. 3:45 P.M. (B)  
 Manners, Lucille. . . . . Fri. 8:00 P.M. (N)  
 Manhattan Merry Go Round. Sun. 9:00 P.M. (N)  
 \*Manhattan at Midnight. . . . . Wed. 8:30 P.M. (B)  
 Marine Band. . . . . Wed. 1:45 P.M. (B)  
 March of Time. . . . . Thurs. 10:30 P.M. (N)  
 Mary Marlin. . . . . Mon. to Fri. 3:00 P.M. (N)  
 Mayor of the Town. . . . . Wed. 9:00 P.M. (C)  
 \*Meet Your Navy. . . . . Fri. 8:30 P.M. (B)  
 Metropolitan Opera. . . . . Thurs. 7:30 P.M. (B)  
 McCarthy, Charlie. . . . . Sun. 8:00 P.M. (N)  
 Moore, Gary. . . . . Thurs. 10:00 P.M. (N)  
 Moylan Sisters. . . . . Sun. 3:00 P.M. (B)  
 Mr. District Attorney. . . . . Wed. 9:30 P.M. (N)  
 Mr. Keen. . . . . Wed. to Fri. 7:45 P.M. (C)  
 \*Mr. & Mrs. North. . . . . Wed. 8:00 P.M. (N)  
 Munn, Frank. . . . . Fri. 9:00 P.M. (N)  
 Murder Clinic. . . . . Sun. 6:00 P.M. (M)





Murrow, Edward... Sun. 6:00 P.M. (C)  
Musical Steelmakers... Sun. 5:30 P.M. (B)  
Music Shop... Tues. 10:00 P.M. (N)

**N**  
Nagel, Conrad... Sun. 9:00 P.M. (C)  
National Barn Dance... Sat. 9:00 P.M. (N)  
Nat. Farm & Home Hour M. to F. 12:30 P.M. (B)  
National Grange Program Sat. 12:30 P.M. (B)  
National Vespers... Sun. 4:00 P.M. (B)  
Navy Band... Wed. 6:00 P.M. (N)  
NBC Symphony Orchestra Sun. 5:00 P.M. (N)  
Nora Wolfe... Mon. 8:30 P.M. (B)  
New York Philharmonic... Sun. 3:00 P.M. (C)  
Night Editor... Thurs. 8:15 P.M. (N)  
Noah Webster Says... Sat. 7:30 P.M. (N)

**O**  
Of Men & Books... Sat. 3:00 P.M. (C)  
O'Keefe, Walter... Tues. 9:00 P.M. (N)  
One Man's Family... Sun. 8:30 P.M. (N)  
O'Neills... Mon. to Fri. 10:15 A.M. (N)

**P**  
Parker Family... Sun. 10:45 P.M. (N)  
Pause That Refreshes... Sun. 4:30 P.M. (C)  
\*Pearson, Drew... Sun. 7:00 P.M. (B)  
Pearce, Jan... Wed. 10:00 P.M. (C)  
People Are Funny... Fri. 9:30 P.M. (N)  
Pepper Young's Family Mon. to Fri. 2:45 P.M. (C)  
\*Phillip Morris Playhouse... Fri. 9:00 P.M. (C)  
\*Porter, Ray... Sat. 8:00 P.M. (B)  
Portia Faces Life... Mon. to Fri. 5:15 P.M. (N)

**Q**  
\*Quiz Kids... Sun. 7:30 P.M. (B)

**R**  
Radio Reader's Digest... Sun. 9:00 P.M. (C)  
Rich, Irene... Sun. 6:15 P.M. (C)  
Riggs, Tommy... Fri. 10:00 P.M. (N)  
Report to the Nation... Sat. 7:00 P.M. (C)  
Romance of Helen Trent M. to F. 12:30 P.M. (C)  
Ross, Lanny... Fri. 10:00 P.M. (C)

**S**  
Saerchinger, Cesar... Sun. 11:15 P.M. (N)  
Salt Lake Tabernacle... Sun. 12:00 P.M. (C)  
Sanderson, Julia... Sat. 8:00 P.M. (C)  
Screen Guild Players... Mon. 10:00 P.M. (C)  
Second Husband... Mon. to Fri. 11:15 A.M. (C)  
\*Secret Weapon... Fri. 7:15 P.M. (C)  
Sevareid, Eric... Sun. 8:55 P.M. (C)  
Shirer, William L... Sun. 5:45 P.M. (C)  
Shriner, Herb... Fri. 10:00 P.M. (C)  
\*Shore, Dinah... Sun. 8:00 P.M. (N)  
Shubert, Paul... Mon. to Fri. 10:30 P.M. (M)  
\*Simms, Ginny... Tues. 8:00 P.M. (N)  
Soldiers of Production... Sun. 11:00 A.M. (B)  
Southernaires... Sun. 10:30 A.M. (B)  
Spotlight Bands... Mon. to Fri. 9:30 P.M. (B)  
Stage Door Canteen... Thurs. 9:30 P.M. (C)

Stars From the Blue... Sun. 12:30 P.M. (B)  
Stern, Bill... Wed. 6:45 P.M. (N)  
Strictly Personal... Mon. to Fri. 1:35 P.M. (M)  
Sullivan, Jeri... Mon. Wed. 6:30 P.M. (C)  
Sullivan, Paul... Mon., Thurs. 10:00 P.M. (M)  
Superman... Mon. to Fri. 5:45 P.M. (M)  
Suspense... Tues. 9:30 P.M. (C)  
Swarthout, Gladys... Sun. 5:00 P.M. (C)

**T**  
Take It or Leave It... Sun. 10:00 P.M. (C)  
\*Telephone Hour... Mon. 9:00 P.M. (N)  
Templeton, Alec... Mon. 10:30 P.M. (B)  
Texaco Star Theatre... Sun. 9:30 P.M. (C)  
\*Thanks to the Yanks... Sat. 7:30 P.M. (C)  
That's Life... Thurs. 7:30 P.M. (N)  
That They Might Live... Sun. 12:30 P.M. (N)  
The Breakfast Club Mon. to Sat. 9:00 A.M. (B)  
The Good Old Days... Thurs. 7:05 P.M. (B)  
Thibault, Conrad... Sun. 9:00 P.M. (N)  
This Is Fort Dix... Sun. 3:00 P.M. (M)  
This Nation at War... Tues. 10:30 P.M. (B)  
Thomas, John Charles... Sun. 2:30 P.M. (N)  
\*Thomas, Lowell... Mon. to Fri. 6:45 P.M. (B)  
Thompson, Dorothy... Sun. 9:45 P.M. (B)  
Those We Love... Sun. 7:30 P.M. (C)  
\*Tibbitt, Lawrence... Thurs. 7:30 P.M. (B)  
Time to Smile... Wed. 9:00 P.M. (N)  
Tomlinson, Edward... Sun. 7:15 P.M. (B)  
\*Town Meeting of the Air Thurs. 8:30 P.M. (B)  
Turns Treasure Chest... Tues. 8:30 P.M. (N)

**V**  
\*Valiant Lady... Mon. to Fri. 10:00 A.M. (C)  
Vallee, Rudy... Thurs. 9:30 P.M. (N)  
Vandercook, John Mon. to Fri. 7:15 P.M. (N)  
Vic and Sade... Mon. to Fri. 1:30 P.M. (C)  
Voice of Firestone... Mon. 8:30 P.M. (N)  
Vox Pop... Mon. 8:00 P.M. (C)

**W**  
Wake Up America... Sun. 3:15 P.M. (B)  
Waltz Time... Fri. 9:00 P.M. (N)  
\*Waring, Fred... Mon. to Fri. 7:00 P.M. (N)  
Weekly War Journal... Sun. 12 Noon (B)  
We The People... Sun. 7:30 P.M. (C)  
Westinghouse Program... Sun. 2:30 P.M. (N)  
What's My Name... Sun. 10:30 P.M. (N)  
When A Girl Marries Mon. to Fri. 5:00 P.M. (N)  
Whiteman, Paul... Sun. 8:00 P.M. (N)  
Winchell, Walter... Sun. 9:00 P.M. (B)  
Wings to Victory... Thurs. 10:30 P.M. (B)  
Wisner, Harry... Mon. to Fri. 9:55 P.M. (B)

*Asterisked (\*) programs are rebroadcast at various times; for these, check local newspapers.*



**NOW! TWO STORES TO SERVE YOU**

9004 Waukegan Road in Morton Grove  
Two Blocks North of Dempster — 965-7763

5941 W. Irving Park Road in Chicago  
Just East of Austin — 736-4133

WE'RE OPEN — MONDAY, THURSDAY, FRIDAY Noon to 5 P.M.  
SATURDAY 11 A.M. to 5 P.M. SUNDAY Noon to 5 P.M.  
(Irving Park Shop Remains Open to 7:30 P.M. SATURDAY)



COME IN AND BROWSE A WHILE. . . we have hundreds of old time radio shows on cassette, 8-track tape and LP records . . . plus books and magazines about the stars and days gone by . . . big band and personality recordings, original movie posters and magazines . . . movie star photos and more. Your Master Charge or VISA card is welcome.



**NOSTALGIA NEWSLETTER**  
**BOX 421**  
**MORTON GROVE, IL 60053**

**FIRST CLASS MAIL**  
U.S. Postage  
**PAID**  
Permit No. 21  
Morton Grove, Ill.

**FIRST CLASS MAIL**

# THE HALL CLOSET CASSETTE TAPE FOR MAY

BY MAIL —

PLEASE ADD 50 CENTS

FOR TAX and to help with  
POSTAGE

Send to:  
**THE HALL CLOSET**  
**BOX 421**  
**MORTON GROVE, ILL. 60053**  
OR

GET YOUR  
CASSETTE  
IN PERSON  
AT



OR

*Metro Golden Memories*

TWO  
LOCATIONS

5941 W. IRVING PARK ROAD  
CHICAGO  
9004 WAUKEGAN ROAD  
MORTON GROVE

Plus Tax  


## RADIO'S SUPER STARS

### Hosts - Fibber McGee & Molly

Fibber's Super-Hetrodyne Radio picks up sounds from radio's golden age, starting with a 1928 Amos 'N Andy political "discussion!" Then to 1932 and Lawrence Tibbett singing the Toreador. Next, in the 1930's and 1940's comes Ruth Etting, Eddie Cantor, Joe Penner and Rudy Vallee in a very funny skit. W.C. Fields is great with Don Ameche and Charlie McCarthy as is Bing Crosby with Bob Burns, and Bob Hope with Skinny Ennis and Jerry Colonna. Jimmy Durante sings and clowns around, Tallula Bankhead talks, and Slapsy Maxey Rosenbloom and Al Jolson have a good routine. Groucho Marx, Jessica Dragonette, Easy Aces, Major Bowes and finally the show ends with the flowery style of Ben Bernie saying, "au revoir and pleasant dreecams." A truly great collection of nostalgic enjoyment!!!!